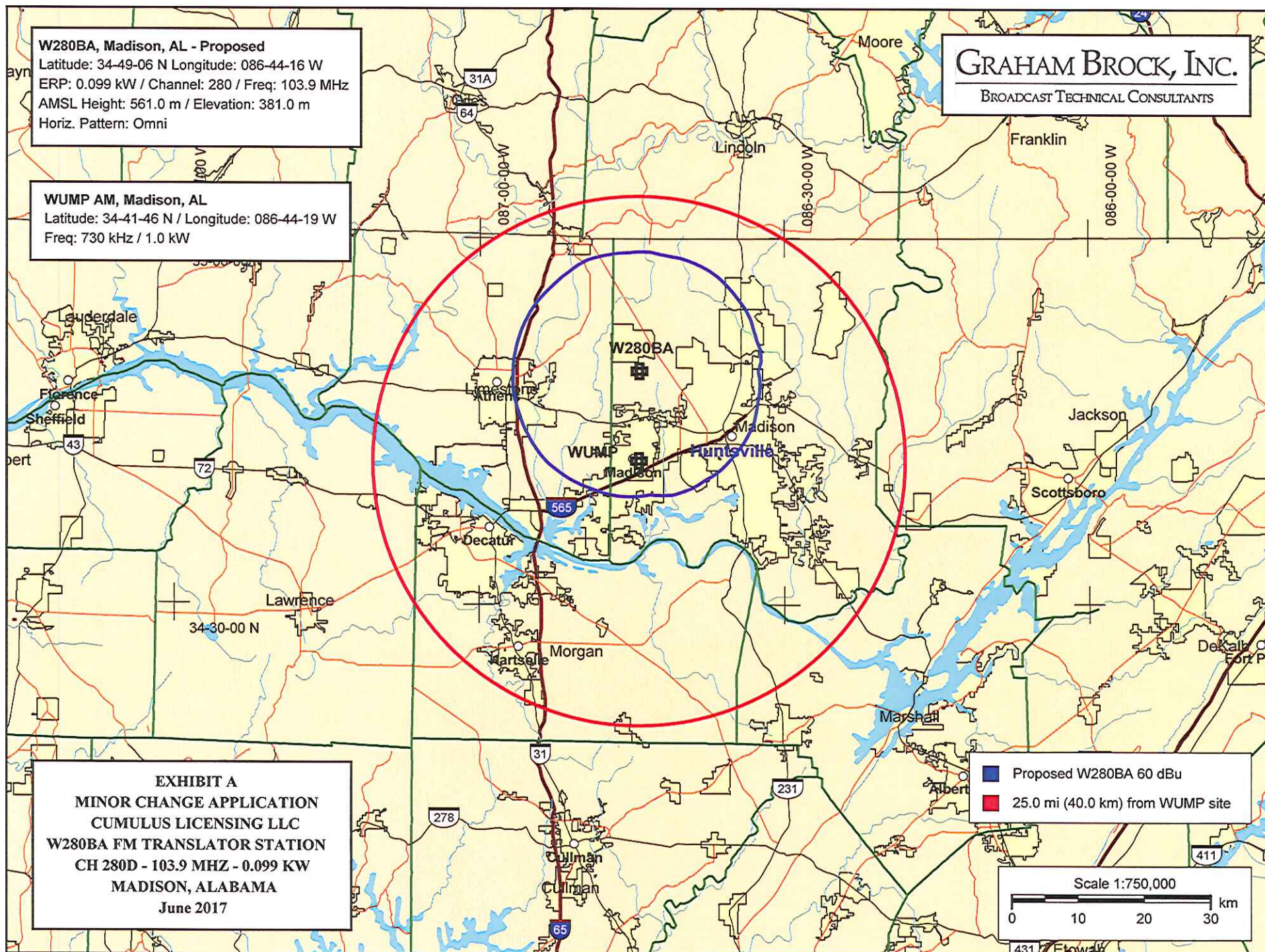


**W280BA, Madison, AL - Proposed**  
Latitude: 34-49-06 N Longitude: 086-44-16 W  
ERP: 0.099 kW / Channel: 280 / Freq: 103.9 MHz  
AMSL Height: 561.0 m / Elevation: 381.0 m  
Horiz. Pattern: Omni

**WUMP AM, Madison, AL**  
Latitude: 34-41-46 N / Longitude: 086-44-19 W  
Freq: 730 kHz / 1.0 kW

**GRAHAM BROCK, INC.**  
BROADCAST TECHNICAL CONSULTANTS



**EXHIBIT A**  
**MINOR CHANGE APPLICATION**  
**CUMULUS LICENSING LLC**  
**W280BA FM TRANSLATOR STATION**  
**CH 280D - 103.9 MHZ - 0.099 KW**  
**MADISON, ALABAMA**  
**June 2017**

■ Proposed W280BA 60 dBu  
■ 25.0 mi (40.0 km) from WUMP site

Scale 1:750,000  
0 10 20 30 km