

## **REQUEST FOR WAIVER**

KCBX, Inc., respectfully requests a waiver of Section 73.509 of the Commission's rules to permit its Station KSBX(NCE-FM), Santa Barbara, California, to overcome the deleterious effects of destructive interference caused by co-channel station KPBS-FM, San Diego, California. The application for construction permit which this request accompanies is part of a joint undertaking by KSBX and by Shepherd Communications, Inc., licensee of co-channel Station KLFH(NCE-FM), Ojai, California.

KSBX, KLFH, and KPBS-FM are licensed to operate on the same frequency: 89.5 MHz, Channel 208. KPBS-FM recently increased power to maximum equivalent Class B facilities.<sup>1</sup> Since KPBS-FM began operating with facilities authorized in FCC File No. BMPED-20010321ABF pursuant to the provisions of Section 73.1620(a)(1) for automatic program test authority, the interference condition suffered by reception of the signals of KSBX and KLFH has increased markedly.

Due to the geographic relationship of KPBS-FM down the Pacific coast from KSBX and KLFH, from time to time they have suffered actual interference from KPBS-FM to the reception of their signals in the heart of their service areas. Engineering counsel has advised the stations that the nature of the phenomenon is atmospheric interference caused by ducting created by a temperature inversion layer between the KPBS-FM transmitter site and the Santa Barbara-Ventura (Ojai) area of the Pacific coast. The KPBS-FM power increase exacerbated the interference conditions. The interference caused by the water path is shown in the engineering

---

<sup>1</sup> KPBS-FM operated for several years under special temporary authority from a transmitter site on San Miguel Mountain with 1.80 kW ERP. Maximum Class B facilities were ultimately authorized at the site, which permitted KPBS-FM to increase power to 2.7 kW, at 550 meters HAAT.

statement accompanying this application, prepared by Doug Vernier, Telecommunications Consultants (“Vernier”).

Beginning in August 2005, KSBX and KLFH began to receive a large number of complaints of interference. Attachment A consists of copies of 33 written complaints that KSBX listeners have sent to the station. A map of KSBX’s coverage area, marked with the location, by address, of the complainant listeners, and included in the engineering statement hereto, reflects that KSBX now receives interference from KPBS-FM in the heart of its service area in Santa Barbara.

KLFH has similarly suffered increased interference to its audience in the heart of its service area in Ventura County. It has received 22 written complaints. Attachment B consists of copies of complaints that KLFH listeners have sent to the station. A map of KLFH’s coverage area, marked with the location, by address, of the complainant listeners, is also included in the engineering statement herein. It reflects that KLFH now receives interference from KPBS-FM in the heart of its service area in Ventura County.<sup>2</sup>

KSBX and KLFH retained Vernier to analyze the conditions and to assist in developing a solution to the interference problem. The solution is embodied in this application for construction permit for KSBX, and in a companion application for construction permit filed for KLFH. By this application, KSBX proposes to change frequency from 89.5 MHz, Channel 208, to 89.9

---

<sup>2</sup> The presence of the KPBS-FM signal in the areas served by KSBX and KLFH was confirmed anecdotally by one local blogger, who wrote, “One upside [to living in the Santa Barbara hills], however, is discovering KPBS/89.5, the NPR affiliate in San Diego. ‘A Way With Words’ has become a must-hear for me on weekends while I’m putting around my office. The Doc Searls Weblog, Monday, November 4, 2002, <http://doc.weblogs.com/2002/11/04>.”

MHz, Channel 210, and to increase power from 0.05 kW to 0.35 kW. This will eliminate the problem of interference from KPBS-FM.

As a result of KSBX's change in frequency, KLFH will be enabled to increase its ERP from 0.097 kW to 1.0 kW. This will provide it with a 10.1 dB increase in signal over the KPBS-FM signal, thereby eliminating the problem of interference from KPBS-FM.

The proposed KSBX facilities will cause de minimus D/U contour overlap with second adjacent channel Station KMRO, 90.3 MHz, Channel 212, Camarillo, California. The area of overlap is a "doughnut" surrounding the KMRO transmitter site, comprising 0.62 square kilometer. This amounts to 0.012% of KMRO's licensed coverage land-area of 5,166.2 square kilometers. Based on the U.S. Census there are no people living within the calculated interference area.<sup>3</sup>

Considering contour overlap, the 100 dBu signal contour area of KSBX is 4.14 square kilometers. This amounts to 0.083% of the land area served by the KMRO 60 dBu signal.<sup>4</sup>

KMRO consents to the overlap. Attachment C is a letter from Philip Guthrie, President, The Association for Community Education, Inc., the licensee of KMRO, granting its consent to the improvements for KSBX. KSBX pledges to work diligently with KMRO to resolve any complaints of interference.

---

<sup>3</sup> See Vernier engineering statement. The area of contour overlap to KMRO facilities proposed in BPED-20060208AMD is 0.71 square kilometer. This amounts to 0.014% of the proposed coverage area.

<sup>4</sup> This represents 0.08% of the land area proposed to be served in BPED-20060208AMD.

For KSBX, the proposed facilities represent an increase of ERP by 8.45 dB from 0.05 kW, serving a population of 179,140, to 0.35 kW, serving a population 198,862. KSBX's 60 dBu signal over land would increase by 88.3%, from 215.4 to 405.5 square kilometers.

The KLFH proposed facilities, which are contingent upon approval of the KSBX improvements, but which require no waiver, represent an increase of ERP by 10.1 dB from 0.097 kW, serving a population of 348,734, to 1.0 kW, serving a population of 513,859. KLFH's 60 dBu signal over land would increase by 124.8%, from 982.6 to 2,208.9 square kilometers.

The geographic area in which interference is expected to occur is a remote and rocky site some 2,100 feet above sea level, on Gibraltar Peak in Santa Barbara County. It is a promontory dedicated to use as communications site, which is shared by numerous other FM, TV, paging and microwave facilities. Attachment D is a topographic contour map which reflects the steep drop-off of the peak directly in front of the location of the mounting of the KSBX antenna.

Attachment E consists of a photograph of the telephone pole on which the KSBX antenna rig is mounted, and a photograph of the receive antenna for the KCBX signal, which vividly portrays in the background the rugged terrain below the promontory. It is abundantly evident that the area in which interference is predicted to occur is not habitable.

The Commission has stated its inclination to grant waivers of second adjacent channel overlap in circumstances in which the benefit of increased noncommercial educational service heavily outweighs the potential for interference in a very small area. *Educational Information Corporation*, 6 FCC Rcd 2207 (1991) ("WCPE"). The circumstances are undeniably present here, with one compelling, if not decisional, distinction: the KSBX and KLFH applications are

not premised upon or filed for the purpose of *improvement* of service. Rather, they seek to eliminate co-channel interference suffered in the heart of their service areas from the ducting of the signal of KPBS-FM. Therefore, as a threshold matter, and without regard to service *improvements*, the two-station proposal will enable the licensees to *restore* existing service which has been degraded by co-channel interference from KPBS-FM.

The extent of interference caused to KMRO in this case is of a magnitude far smaller than that which the Commission approved in *WCPE*. There, WCEE proposed to increase overlap to WCPE from 58.9 to 106.9 square miles, from 0.45% to 0.8% of WCPE's 1 mV/m contour. The prohibited overlap was said to affect less than one percent of the population within WCPE's 1 mV/m contour. Here, by contrast, the area of overlap to KMRO is nearly ten times less, 0.083%, and the population within the area is a minuscule 65 persons, which is only 0.0046%.

As for the extent of service improvements which will result from the facilities changes, the KSBX and KLFH proposals are salutary. They will enable the licensees to increase their combined area of service by 118%, from 1,198 to 2,614 square kilometers, and increase combined population served from 527, 874 to 712,721 persons. Coupled with the primary objective of eliminating co-channel interference within the stations' protected coverage areas and the de minimus interference which will be caused, the proposals are clearly in the public interest.

For these reasons, waiver of Section 73.509 of the Commission's rules is fully warranted, and it is so requested.

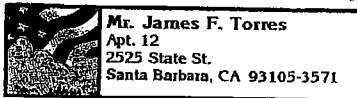
**REQUEST FOR WAIVER**

**Attachment A**

**KSBX Listener Complaints**

Jane A. Leavitt  
1025 State Street #61  
Santa Barbara, CA 93110  
Tel. (805) 696-6648 Sat. 8/20/05

Dear Sir or Ms at KCBX,  
I wanted to listen to the Prairie  
Home Companion program on KCBX today.  
I tried and tried to tune in, and  
all I got was jazz music (NOT PHE music!)  
Please do whatever is needed  
to cut out this interference.  
Thank you. Sincerely, Jane A. Leavitt



Yes! I receive a tremendous amount of  
interference from KSBX in San Diego two  
or three days a week, so much so that I  
I cannot hear KCBX. I hope there is  
some way this can be prevented.

J. F. Torres

August 22, 2005

33401-A147



Ms. Mary A. Chubb  
1528 Laguna St Apt 4  
Santa Barbara CA 93101-1159

A Friend of Sesame Workshop

Street • Santa Barbara, CA 93109



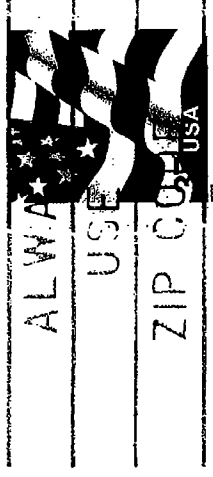
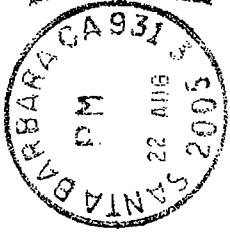
Mr. Lanzetta - I live  
in downtown SB, just below  
the Mission - the Diviera.  
3 radios (my pariest with push buttons does  
not get 89.5 at all) the other 2 do pick up  
89.5 (in 2 separate rooms) but not as  
clearly as they used to.  
Hope this helps ym - good  
luck + thanks for your  
good programming.  
Dan  
May 2.

33401-A147



There is no way to

Virginia C. Robinson  
1112 Calle De Los Amigos  
Santa Barbara, CA 93105-5467



How you can get it fixed.

Virginia Robinson

August 22, 05

I understand the interference is such  
that on certain recordings I  
cannot hear NPR at all from  
5:30-7:30, which is when  
I prefer to get the news  
and comments.

I have not documented  
the exact days, alas, but  
it is a vexatious way  
to start the day when it  
has happened. And it  
shouldn't happen!



Edwin Laing wrote:

Frank--

KCBX 89.5 has been one of my radio mainstays, listening many hours each week, for years. In recent weeks I have realized I cannot renew my subscription because I don't get it virtually at all any more.

Especially in the last few weeks, all I get is San Diego on 89.5, as I have notified you previously; usually loud and clear as a bell, sometimes garbled, but rarely does KCBX come through at all.

2155 Ortega Hill Road, Summerland (no mail) near the freeway by the sea

-Ed in Summerland

Ann Ricchiazzi wrote:

Mr. Frank Lanzone,

I am writing to inform you that we no longer hear your station well. It began sometime during this summer. We live in Santa Barbara. We used to hear you clearly with very little static, but there is now so much static that we often choose a public station to the southeast of us instead. However, my son attends Cal Poly SLO, and we do miss hearing the news, reports and events from his town.

I understand that the interference may be caused by a conflicting broadcast from San Diego. I hope you can persuade the FCC to correct this situation. It is problematic driving along Cathedral Oaks and gets particularly bad starting along Foothill near San Roque in Santa Barbara and gets progressively worse until we reach home at 3056 Marilyn Way, 93105, where we almost always lose KCBX's broadcast completely.

Thank you,  
Ann Ricchiazzi  
Listener for about 20 years.

**Subject:** interference with KSBX  
**From:** Rachel Burbank <doug@crustal.ucsb.edu>  
**Date:** Fri, 19 Aug 2005 22:24:21 -0700  
**To:** frank@kcbx.org

Mr. Frank Lanzone  
General Manager  
KCBX  
4100 Vachell Lane  
San Luis Obispo, CA 93401

Dr. Douglas and Rachel Burbank  
1026 Sandpiper Lane  
Santa Barbara, CA 93110

19 August, 2005

Dear Mr. Lanzone,

We are writing to let you know that, over the past two weeks, we have encountered considerably more interference on our radios as we try to listen to KSBX at 89.5 Mhz. The interference is not continuous throughout the day, but occurs every day and for much of each day. We greatly depend on KSBX every day (and a considerable amount of planning of schedules occurs so that favorite programs can be heard by one or the other of us). So, we are chagrined by the additional interference that we are now experiencing. We presume that another station is broadcasting at the same or a nearby frequency, and we wish that some action can be taken to lessen such interference.

As we stated above, we greatly value our opportunity to listen to public radio on KSBX, and we hope to receive a clear, interference-free signal in the future. Any help you can offer will be greatly appreciated!

Sincerely,  
Doug and Rachel Burbank

Anita Guerrini wrote:

Dear Mr. Lanzone,

I have been out of town for a while and noticed the increased interference on KCBX as soon as I got back to town on the 20th of August. I listen to KCBX pretty much every day for Morning Edition and All Things Considered. KPBS is a good station, but I don't particularly want San Diego news and I certainly don't want it to interfere with KCBX. I live in Goleta close to the coast (near UCSB) but I have noticed the interference in the car too. I live on West Campus Lane in Goleta (Isla Vista, actually, near the UCSB campus) but have also experienced interference driving from home into Santa Barbara.

Hope this helps.

Sincerely,

Anita Guerrini

\*\*\*\*\*

Anita Guerrini  
Professor, Environmental Studies and History  
University of California, Santa Barbara

mailing address:  
Dept. of History  
University of California, Santa Barbara  
Santa Barbara, CA 93106-9410 USA

phone: 805-893-8827 or 893-7371  
fax: 805-893-8795  
e-mail: guerrini@history.ucsb.edu

Douglas H. Harris wrote:

I listen to KCBX via KSBX at 89.5 Mhz. I do not get interference while listening to my principal source which I obtain through my Cox Cable service. However, I cannot receive the station clearly on any other radio in the house because of interference.

3705 San Remo Drive, Santa Barbara, CA 93105

In the past week or so I have hardly been able to receive KSBX at all on these other radios.

Doug Harris

KCBX Signal

**Subject:** KCBX Signal

**From:** "Sue Dodds" <sdodds@silcom.com>

**Date:** Tue, 23 Aug 2005 08:57:16 -0700

**To:** <frank@kcbx.org>

Frank,

I have been a constant supporter and listener to KCBX for many years. However, lately I have been often been unable to clearly pick up the signal on 89.5, sometimes making it impossible to hear the broadcast at all. I live in Santa Barbara and the loss of public radio here would be a disaster for me as well as many others. It is difficult to believe that a community the size of Santa Barbara would have no access to NPR. Also, I assume that lots of your support comes from the Santa Barbara area. I hope that this situation can be resolved, including blocking the planned increase of power from another station that broadcasts on or near the same frequency.

Sue

Sue Dodds  
1013 Via Merano  
Santa Barbara, CA 93111  
(805) 964-6548

Interference from KPBS

**Subject:** Interference from KPBS

**From:** Stephen Murray <stevemurray1966@yahoo.com>

**Date:** Sun, 21 Aug 2005 13:27:36 -0700 (PDT)

**To:** frank@kcbx.org

Dear Mr. Lanzone,

We are regular listeners and subscribers to KCBX who live in Goleta, meaning we tune to KSBX.

We experience interference from station KPBS in San Diego periodically and unpredictably. But when it does come it seems to be near total: we are unable to hear KSBX on 89.5, and unfortunately, we don't pick up the alternate frequencies used in the Santa Ynez valley. It is very annoying to us and we would like to have the situation attended to by the appropriate authorities. We listen to FM radio a lot, esp. KUSC for classical music from Los Angeles and several local Santa Barbara stations, and we experience no such interference on any of their broadcasts, ever.

Thank you,  
Steve and Fermina Murray

442 Danbury Ct.  
Goleta 93117  
tel. 967-7189

Interference with KCBX, 89.5

**Subject:** Interference with KCBX, 89.5  
**From:** Shelley Hughes <skhughes@fielding.edu>  
**Date:** Sun, 21 Aug 2005 10:44:41 -0700  
**To:** frank@kcbx.org

Dear KCBX,

I've been listening to KCBX for years but just lately I can no longer get it on 89.5! I live off Highway 154 and count on listening to the news while I drive to work in Santa Barbara but now there is so much interference from a San Diego station that it is no longer enjoyable with the intermittent reception and lots of static, and often not even possible. In the past, depending upon the season I might get a little static or interference now and then but now since the early part of August '05 the interference is almost all the time and much more intense.

I hope there is a remedy -- help!

Thanks for all your great programming.

Best regards,  
Shelley

Shelley Hughes  
2734 Painted Cave Rd.  
Santa Barbara, CA 93105

Reception

**Subject:** Reception  
**From:** "Richard Poedtke" <rapoe@cox.net>  
**Date:** Fri, 19 Aug 2005 11:43:25 -0700  
**To:** <frank@kcbx.org>

Although I live on the southern fringes of Santa Barbara county, reception from KCBX has been very good .... except for the last couple of weeks.

This is especially bad for the music programming. All efforts should be made to clear it up.

Richard A. Poedtke  
6180 Via Real Unit 76  
Carpinteria, CA 93013

**Subject:** KPBS-FM interference in Santa Barbara

**From:** patty.gary@pacinfotech.com

**Date:** Fri, 19 Aug 2005 18:30:19 -0800

**To:** frank@kcbx.org, Patricia Gary <patty.gary@pacinfotech.com>

Hi:

I have noticed an increased and more regular interference with KCBX . This occurs as

I drive either along APS or on Olive streets. Both of these streets run along the Riviera (APS towards the top; Olive Street on the lower portion).

It pretty much wipes out the KCBX signal for about a mile.

This is pretty much a daily occurrence as Olive street is my daily route to work; I usually travel along APS at least twice a week.

I would really like it to stop as I enjoy your programming a lot! I had wondered what I could do about it, so I thank you for the opportunity to help remedy the situation.

Hope this helps.

Patty Gary

-----  
E-mail: [patty.gary@pacinfotech.com](mailto:patty.gary@pacinfotech.com)

Date: 08/19/2005

Time: 18:30:19

signal interference....

**Subject:** signal interference....

**From:** Noel Greenwood <noele@earthlink.net>

**Date:** Sat, 20 Aug 2005 14:41:31 -0700

**To:** frank@kcbx.org

I was relieved to get your letter about recent reception issues involving a San Diego radio station on the same frequency as KSBX 89.5. It explains why I am having unaccustomed trouble receiving your signal! I live in the Sycamore Canyon area of Santa Barbara and listen to the station almost all day, at home and in my car. In the last few weeks, I have indeed had problems with another station cutting you off, and I could tell it was from San Diego because of the weather forecasts they were giving and mention of events in San Diego. It is worst when I am in my car and approaching Montecito from Carpinteria --where I sometimes lose you entirely--but it also happens sporadically as I drive around town. It is less troublesome at home, perhaps because I am at the bottom of a canyon, not exposed to line-of-sight reception from the south. At first I thought there was something wrong with my radio. But I have a 2004 Camry and reception of other local stations is crystal clear. Then I assumed you were having temporary transmission difficulties of some kind, causing your signal to be weaker in some parts of Santa Barbara than others. I had no idea it was another station blocking my reception. Please convey my strong displeasure to the FCC or whomever; this is an outrageous situation and should not be allowed to continue!

Noel Greenwood  
595 Sycamore Vista Road  
Santa Barbara, CA 93108

**Subject:** Radio Interference

**From:** Matt Dobberteen <mattdobberteen@gmail.com>

**Date:** Tue, 23 Aug 2005 13:11:23 -0700

**To:** frank@kcbx.org

Frank--

I received your letter dated 8/17/05.

I am a listener and member of KCBX. I live in Santa Barbara at 927 N. Alisos St.

Since on or around August 4th, I have experienced increased interference while trying to listen to you station. Normally, I never have to adjust my tuner knob. However, over the past couple of weeks, I have made frequent adjustments but with no real improvement in the signal quality. It has been frustrating.

I would strongly urge that the FCC not grant a power increase to the San Diego station until this situation can be addressed.

Thanks as always for your great work. Please let me know if there is anything else I can do to support your efforts.

Take Care-- Matt Dobberteen

#### KSBX Reception

**Subject:** KSBX Reception

**From:** "Emily Martin" <emilydmartin@cox.net>

**Date:** Fri, 19 Aug 2005 21:34:19 -0700

**To:** <frank@kcbx.org>

Frank Lanzone,

Thank you for your communication of August 17, 2005.

We have been having trouble with our reception of KSBX at 89.5 for the last 2-3 weeks. It is not that we have been receiving KPBS-FM from San Diego, but that we cannot properly receive KSBX. It will come in and then go static. Movement of hands or body like an antenna around the radio seemed to bring the reception back momentarily but this is not a solution. We bought a new radio some months ago hoping this would solve our problems in receiving KSBX and it did seem to for a while. We have had trouble with a Christian radio station interfering with our reception sometimes and definitely in the car going south on 101. Sometimes atmospheric conditions have caused other southern California Public FM stations to override KSBX for a day or two. AT the present time we cannot listen to KSBX a good part of the time and we can only get National Public Radio News by hunting around for one of the So CAL stations in Santa Monica or elsewhere.

Please add our request to the FCC not to stop our ability to hear KSBX by having competing transmission block our local station.

Emily Martin  
3866 Crescent Drive  
Santa Barbara, CA 93110

[emilydmartin@cox.net](mailto:emilydmartin@cox.net)

KPBS interference in SB

**Subject:** KPBS interference in SB

**From:** Dwight Gregory <dgregoryaia@verizon.net>

**Date:** Sun, 21 Aug 2005 14:23:49 -0700

**To:** <frank@kcbx.org>

Dear Frank,

You may edit this.

Thanks for your letter.

We started listening to 90.1 from Pismo in the mid 70s and when we moved to Santa Barbara in '81, we couldn't wait for your signal to come over the hill. When you did, we listened to 89.9 faithfully and appreciated the switch to 89.5.

I had assumed that you were working on the KSBX transmitter recently, and since the signal seemed weak, I thought it would improve after the problem was fixed. I have noticed the interference a lot more while driving around. We live in the Mission Canyon foothill area and up until the beginning of August, the signal at 89.5 was very clear and strong on all of the home radios and in our car radios--except for 1 or 2 other canyon areas.

I'm in my car on average 2 hours a day around town, and I get interference more than half the time. It's very frustrating when listening to anything but music--and even that is disruptive.

Please do everything you can to maintain your normal strong signal.

Regards,

Dwight Gregory

Don & Judy Nason wrote:

Dear Mr. Lanzone,

I have been a regular listener to Morning Edition on KSBX 89.5 from my home in Northern Goleta. The signal has usually been clear in the past, but on certain mornings recently it has been impossible for me to hear the program because of interference from another station; so I've turned the station off.

Sincerely,

Judy Nason

760 Las Cruces Ct.

Goleta 93117



Interference - KCBX

**Subject:** Interference - KCBX  
**From:** "C Millegan" <res0isgk@verizon.net>  
**Date:** Sun, 21 Aug 2005 17:56:19 -0700  
**To:** <frank@kcbx.org>

August 21, 2005

Frank Lanzone  
General Manager of KCBX  
San Luis Obispo, CA

Mr. Lanzone:

For the past three weeks or so, the reception on 89.5 (KCBX) has been sporadic. In my kitchen, I have to move my radio around from place to place to try to find the best spot. On very, very rare occasions in the past, I would have to move it from one spot to another but was always able to eventually get clear reception. I have noticed lately that the reception is worse than it has ever been.

I have even noticed it in my car which usually has the best reception.

Because I support with donations the operation of KCBX, I am concerned when the reception is poor over a period of time. Public radio is very important to me and I want to make sure that KCBX is protected from a drop off in support because of the reception.

Cresanna Millegan  
889 Cheltenham Road  
Santa Barbara, CA 93105  
805-682-8064

Increased Interference

**Subject:** Increased Interference  
**From:** "Barry Keller" <kyrrab.cal@verizon.net>  
**Date:** Mon, 22 Aug 2005 13:20:21 -0700  
**To:** "Frank Lanzone" <frank@kcbx.org>

Dear Mr Lanzone

I have definitely had increased problems with interference on KSBX at 89.5 Mhz in recent weeks at my home near the top of the Mesa. I have been trying to tweak my antenna, but to little effect, so I was interested to learn of the KPBS interference. I have also noted in the past the reception of San Diego FM signals is relatively good in Santa Barbara. At the harbor and Ledbetter Beach, which are blocked from line-of-sight to Broadcast Peak by the hill of the Mesa, San Diego stations sometimes come in better than Santa Barbara stations.

Let me know if I can be of any more help.

**Barry Keller, PhD** RG(PG) CHG  
**Hydrogeophysicist**  
kyrrab.cal@verizon.net  
ph/fax 805-965-1990, cel 805-698-1780  
741 Dolores Drive  
Santa Barbara CA 93109 USA

Nigel Buxton wrote:

Dear Mr.Lanzone,

Since early August I have been receiving more interference than usual while listening to shows on KCBX. Anything you can do alleviate the situation would be greatly appreciated. My home address is 4005 Bajada Ln. Santa Barbara 93110... we are on the ocean front and face south, looking directly at Santa Cruse Island...

Respectfully,  
Nigel Buxton

Victoria Blunt wrote:

I listen to KSBX at 89.5 Mhz but recently have experience trouble trying to listen to my favorite programs. I even went as far as buying a new digital radio (\$89) hoping that would help clear up the problem. No such luck. Please let the powers that be know that there is a BIG problem with the airways transmissions and something needs to be done to clear up the interference. 5277 Calle Barquero  
Santa Barbara, CA 93111

I also listen to KSBX at work:

300 N. San Antonio Road  
Santa Barbara, CA 93110

Charlotte Smith wrote:

We live on the west end of Goleta in a small valley. Our address is 208 Calle Serrento, Goleta, CA 93117. We have experienced increased interference recently. Where we are sitting or standing in the room with the radio is very important, as the wrong place creates static so bad we can't listen to the station. Very often that wrong place is exactly where we need to be, like at the stove or at the sink or at the kitchen table!

We hope this interference can be eliminated.

Thank you.

Charlotte and Brian Smith

C/J CLOUSE wrote:

I can indeed testify that signal interference has made listening to KCBX essentially impossible on certain radios in my house in Santa Barbara. I live on a hillside in the lower Riviera area of Santa Barbara, and at night and in the morning, it is generally impossible to isolate the KCBX signal from the background static and from what appears to be a stronger signal from a San Diego station. The problem has gotten worse lately, so I've simply given up trying to listen to KSBX in my bedroom or kitchen. I'm at 17 Prospect Ave (93103). I notice the KPBS signal starting in my garage at 1722 Prospect Ave. It continues as a drive west along Prospect, turn left down the hill on E. Islay St., continues along Laguna over to Valerio St. Can't say how much further because I just change stations. Coming home up Valerio, I always lose the KSBX signal at the corner of Valerio and Prospect.

I hope the overlap can be rectified and the KCBX signal strengthened.

Sincerely,

Charles (& Jan) Clouse

MJ Bakove wrote:

I have noticed a marked increase in interference recently on KCBX, making it very difficult to receive at home, work and even in my car on the 89.5 mark here in Santa Barbara. I understand a competing station out of San Diego, KPBS-FM may be responsible. I hope the FCC will think twice about increasing their power since I'd much rather receive the signal of my local station. - at my home - 3886 Sunset Rd., Santa Barbara, CA 93110. My office in particular which is downtown Santa Barbara, 418 Chapala, SB 93102. And nearly anytime in my car on the 101 driving between Goleta and Ventura.

Thank you!

MJ Bakove  
surfrgrl6@juno.com

Royce Adams wrote:

We live in SB near the county bowl and frequently have interference from another station, especially as we drive around town. 1000 San Diego Road in Santa Barbara, plus areas such as along APS and Montecito area.

Royce Adams  
Jane Brody

Laura and Peter Erskine wrote:

Hello Frank,  
Thank you for your letter regarding interference from KPBS-FM when we tune into KCBX at 89.5 Mhz.

Yes we do experience interference at our home and when driving between home and work. It does seem to be effected by the weather; it is worse on some days. 910 Isleta Ave. Santa Barbara, CA 93109

We would greatly prefer to continue to have the reception we have always had and appreciate your efforts to that end.

Many thanks!  
Peter Erskine  
Laura Denny

910 Isleta Ave.  
Santa Barbara, CA 93109

Angela wrote:

**Dear Mr. Lanzone:**

**Thank you for the opportunity to comment on radio interference here in Santa Barbara.**

**I have been wondering why our radios, including a very expensive stereo tuner, can't get a clear signal anymore from KSBX, which appears on 89.5. Sometimes we can't even get anything from the radio except hiss.**

**I can't recall exactly when this problem started, but it is now very aggravating. To think that here in Santa Barbara there is no public radio station other than the S.L.O. station and KCLU, which is even harder to pick up, that situation is just not acceptable. Why should the FCC allow this San Diego station to foul our only existing reception here in Santa Barbara? That is outrageous, and we are hoping that you can convince the FCC to either cut back on the SD station's power output or else place them on a different frequency.**

**Thanks for your efforts to keep the station beaming into Santa Barbara, and I know at least two of my neighbors who feel the same way.**

**Sincerely,**

**Angela Bates**

**1502 Mountain Avenue  
Santa Barbara CA 93101**

Mr. Frank Lanzone,

I am writing to inform you that we no longer hear your station well. It began sometime during this summer. We live in Santa Barbara. We used to hear you clearly with very little static, but there is now so much static that we often choose a public station to the southeast of us instead. However, my son attends Cal Poly SLO, and we do miss hearing the news, reports and events from his town.

I understand that the interference may be caused by a conflicting broadcast from San Diego. I hope you can persuade the FCC to correct this situation.

Thank you,  
Ann Ricchiazzi  
Listener for about 20 years.

Ricchiazzi  
3535 Los Pinos Drive  
Santa Barbara, CA 93105

Julie Kummel wrote:

Hello, Frank,

I used to be able to listen to KSBX 89.5 mHz every night from 8pm to midnight at my house on San Marcos Pass. It came in very clearly most nights. In the last few weeks, I have only been able to get the station clearly about 3 nights in 7. Often while I'm listening another station will bleed in and no amount of dial adjustment will return KSBX. It's really frustrating. I hope the FCC will realize that increasing the power of KPBS in San Diego will make it impossible for many of us in SB to hear our favorite station! I am at 5100 East Camino Cielo, Santa Barbara 93105. I'm on the north facing slope (facing towards Santa Ynez Valley), about 1/2 mile from the highway.

Thanks for the opportunity to comment.

Julie Kummel

--

No virus found in this outgoing message.

Checked by AVG Anti-Virus.

Version: 7.0.338 / Virus Database: 267.10.12/77 - Release Date: 8/18/05

We have had many days where  
our reception here in Goleta totally  
sucked. We'd love to hear that  
the FCC helped at & increased  
listendability for our friends KCBX.  
Please add this letter to the  
~~many~~ <sup>many</sup> others complaining about

STATIC.

Thanks

29 S. Fairview  
Goleta, Ca.  
93117

ISLAND SEED & FEED  
GOLETA CA 93117

Jacqueline Gist wrote:

Thank goodness you wrote about the radio interference. It's awful! and VERY noticeable. It sounds like a shshshshsh that makes me feel it's not tuned in properly. Tell the FCC it is most unfair. I want to continue to support the station, but I might have to quit when I can't stand the noise any longer.

Sincerely, Jacqueline Gist, 621 Dolores Drive, S.B. 93109 (805) 884-0886

**REQUEST FOR WAIVER**

**Attachment B**

**KLFH Listener Complaints**



---

**From:** Catanese & Wells [mailto:cnwlaw@gte.net]  
**Sent:** Wednesday, March 22, 2006 9:46 AM  
**To:** Jon Fugler  
**Subject:** Interference Problem

Dear Jon:

I have noticed interference from KPBS-FM in San Diego when listening to the station. The two spots where I always seem to get it are on the 23 freeway in Thousand Oaks around the Janss/TO Blvd. exit, and on Erbes Road near Hillcrest Road when driving my daughters to school. I have noticed increased interference in recent weeks. Please keep me informed of potential solutions to this annoying problem.

Thanks,  
Douglas R. Hume, Esq.  
Catanese & Wells, A Law Corporation  
31416 W. Agoura Road, Suite 240  
Westlake Village, CA 91361  
phone - (818) 707-0407  
facsimile - (818) 707-1161  
e-mail - [cnwlaw@gte.net](mailto:cnwlaw@gte.net)

---

**From:** Howard Buff [mailto:howiebuff@hotmail.com]  
**Sent:** Tuesday, March 21, 2006 4:59 PM  
**To:** Jon Fugler  
**Subject:** Interference from KPBS-FM on 89.5 FM

Jon,

I quite often get interference on 89.5 FM on my radio dial from KPBS-FM in San Diego. Most of the time when this happens, I am driving in the Ventura area on the 101 freeway. When it does happen, I lose the signal for K-LIFE and then KPBS comes on instead. It may stay on the KPBS signal for a short time of a few seconds or so, or sometimes even longer, before I regain the correct 89.5 signal from K-LIFE.

This can be quite annoying when I'm listening to my favorite songs!

Thanks,  
Howard Buff

---

**From:** Eloise Maitland [mailto:elm5312003@yahoo.com]  
**Sent:** Wednesday, March 22, 2006 9:22 AM  
**To:** Jon Fugler  
**Subject:** interference

Yes I do experience major interference with my reception of KLIFE. I tried relocating my stereo but realized nothing helped so I simply turned it off. It's KLIFE or nothing. I would love to see the FCC help in this matter KLIFE is an awesome station, there is no other like it in our area. I

would much rather listen to our local station than another in San Diego (KPBS-FM). KLIFE keeps us so updated and informed on what is happening locally.

Eloise Maitland

Juice Plus+, Nutritional Consultant

[www.getyourjuiceplus.com](http://www.getyourjuiceplus.com)

805-650-5649

---

**From:** Ian Maxwell [mailto:ian.maxwell@digitalinsight.com]

**Sent:** Wednesday, March 22, 2006 7:56 AM

**To:** Jon Fugler

**Subject:** KPBS interference.

Jon,

KPBS now overpowers your signal at Lindero Canyon Rd. in Westlake Village. I used to be able to listen to your station cleanly all the way to my company, which is only one block off of the 101 at Via Colinas. I hope this helps.

Thank you,

Ian Maxwell

Sr. Network Administrator

Digital Insight

5601 Lindero Canyon Road, Suite 100

Westlake, CA 91362

(866) 858.DGIN (3446) (toll free)

(818) 889.0773 (fax)

(818) 597.6541 (direct dial)

(818) 292.0736 (cell)

[ian.maxwell@digitalinsight.com](mailto:ian.maxwell@digitalinsight.com)

*Grace: Getting what we don't deserve.*

*Mercy: Not getting what we do deserve.*

---

**From:** Liz Bennett [mailto:bennett81200@sbcglobal.net]

**Sent:** Tuesday, March 21, 2006 5:38 PM

**To:** Jon Fugler

**Subject:** Interference issues

Hello,

Recently, I have noticed an increased amount of interference with K-Life 89.5. The interference seems to be coming from a PBS type station in San Diego. I love listening to K-Life, and I hope there is something you will be able to do to facilitate a clearer signal.

Thanks for bringing the Ventura County listeners such a great station!

Sincerely,  
Liz Bennett

---

**From:** KBub370@aol.com [mailto:KBub370@aol.com]  
**Sent:** Tuesday, March 21, 2006 12:15 PM  
**To:** Jon Fugler  
**Subject:** San Diego KPBS interference

Dear Jon Fugler,  
I am writing to let you know that in several locations around the Newbury park, CA listening areas of KLIFE 89.5 radio band I am hearing a PBS station from San Diego and the song will just suddenly be switching over to this other station and then come back in depending on my location even within yards of my drive. I have never had interference before and am upset that the station I so love is having this problem. This started not too long ago but seems to be consistent now. I thought it was a fluke but now see it is wide spread. Please contact who ever is in charge and have this restored. I have no idea why I am getting a KPBS San Diego Radio station in Newbury park, Ventura County? Please get the FCC to do something about this for us. If I want to hear from San Diego I will go there or tune in via computer. I Love KLIFE in Ventura county and want my **89.5 FM to be KLIFE** not the other. I support this station and love it.  
Blessings,  
Kimlee Bublitiz  
Newbury Park, CA. 91320

---

**From:** K Wong-Moon [mailto:k\_wongmoon@yahoo.com]  
**Sent:** Tuesday, March 21, 2006 12:14 PM  
**To:** Jon Fugler  
**Subject:** Interference from KPBS-FM

To whom it may concern:

I live in Simi Valley, California, and am an avid listener of KLIFE at 89.5 FM. Unfortunately, while listening to KLIFE, I periodically receive interference from KPBS-FM in San Diego. This interference has been noticeable for a long time, but has increased in the past few weeks. This interference is unwelcome since it interrupts my listening of KLIFE.

Sincerely,  
Kirby Wong-Moon  
Simi Valley, CA

---

**From:** Jess Stryker [mailto:Jess@JStyker.com]  
**Sent:** Tuesday, March 21, 2006 8:45 AM  
**To:** Jon Fugler  
**Subject:** Increased interference

Jon,  
I have noticed that in areas of downtown and mid-town Ventura where I used to receive the K-LIFE signal, I now receive KPBS. In the past the K-LIFE transmission was over-powered by KPBS when I

reached the parking lot of my church, which is mid-town just above Poli Street. I now loose the signal several blocks away, near Seaward and Main Street, much further away from the foothills.

Regards,  
Jess Stryker, 3/21/2006

---

**From:** Eric Baucom [mailto:ebaucom@pacbell.net]  
**Sent:** Monday, March 20, 2006 6:39 PM  
**To:** Jon Fugler  
**Subject:** Regarding interference with KPBS in San Diego

Dear Jon,

I have recently noticed a significant increase in station cross-over / interference with KPBS from San Diego. It is especially pronounced when I drive in my car in certain parts of the city of Ventura. Please let whoever needs to know that KPBS is overriding your station here in Ventura.

Sincerely,

Eric Baucom  
[ebaucom@pacbell.net](mailto:ebaucom@pacbell.net)

---

**From:** Devon Wooff [mailto:pillar1020@yahoo.com]  
**Sent:** Monday, March 20, 2006 8:30 PM  
**To:** Jon Fugler  
**Subject:** radio interference

I am so glad something is finally being done about this!!!!!! I have wanted to tell someone before, but didn't know who to tell.

I live in Ventura and when I go to and from my house a good part of the road has no K-LIFE reception because of the San Diego station. A lot of songs I want to hear have been interrupted (sometimes for the remainder of the song) because of the interference. I hope something could be done about this.

Sincerely

Devon Wooff

---

**From:** Julie Stryker [mailto:julie@jstryker.com]  
**Sent:** Monday, March 20, 2006 8:03 PM  
**To:** Jon Fugler  
**Subject:** interference

Dear Jon:

I have noticed interference from KPBS-FM in San Diego in certain parts of Ventura. It has increased significantly recently. I use to notice it when I pulled into my church parking lot, but now it's beginning on Main St.

Hopefully, something will be done to alleviate this annoying situation.

In Christ,

Julie Styker

---

**From:** Tbeartinder@aol.com [mailto:Tbeartinder@aol.com]

**Sent:** Sunday, March 19, 2006 7:50 PM

**To:** Jon Fugler

**Subject:** Responding to the interference

Hi Jon,

My name is Lynn Tinder, and I live in Port Hueneme. I'm writing to let you know I'm tired of the interference that I get from the station KPBS-FM in San Diego as I listen to K-LIFE 89.5 FM. This station has saved my life, because I love the music so much I just want to praise the Lord every time I listen to it. When I can't listen to it because of the interference from the KPBS-FM in San Diego the enemy starts attacking me. I never really listened to Christian music like I do now. It's basically my life, and I really need to listen to it at night. But, with that interference from KPBS-FM in San Diego it is really hard to so I don't sleep very good, because of not having any worship music to keep the enemy away. Please I really need this station to keep me connected with God my way. And, if KPBS-FM in San Diego continues to interfere with K-LIFE 89.5 FM, which was here on 89.5 FM first, my salvation will be permanently damaged.

>From a true KLIFE 89.5 FM listener

Lynn Tinder

---

**From:** Wendy Gorrell [mailto:wendygorrell@sbcglobal.net]

**Sent:** Monday, March 20, 2006 2:38 PM

**To:** Jon Fugler

**Subject:** Interference

Dear Jon,

We are writing to tell you that we have noticed a significant increase over the past few months in interference on your station, 89.5 FM, in Ventura, CA. There is constant interruption from KPBS-FM from San Diego. We hope that something can be done about this. Thank you for your attention to this matter.

Clark and Wendy Gorrell

6947 Swan Street

Ventura, CA 93003

805-644-1456

*Wendy Gorrell*

---

**From:** Julie Bergman [mailto:kandksmommy@sbcglobal.net]

**Sent:** Monday, March 20, 2006 7:26 PM

**To:** Jon Fugler  
**Subject:** Station Interference

Hi! I am a listener in Ventura. I just wanted to let you know that I have been getting interference recently when trying to listen to your station. Instead of listening to you I am getting signals from a PBS station in San Diego. Some days I get quite a surprise, tuning in to listen to Christian radio and instead getting radio that I would consider controversial and wouldn't choose to tune into on my own. It especially bothers me if my children are with me at the time. I hope something can be done about this.

Sincerely,  
Julie Bergman  
Ventura, CA  
kandksmommy@sbcglobal.net

---

**From:** Jim Wooff [mailto:jimwooffjr@yahoo.com]  
**Sent:** Monday, March 20, 2006 11:47 PM  
**To:** Jon Fugler  
**Subject:** Interference from San Diego County Station

Dear Jon,

We would like to thank you for identifying somebody to direct our radio listening frustrations toward. We live in Ventura and have a VERY difficult time, most mornings, receiving the KLIFE broadcast signal strong enough to drown out KPBS from San Diego. Had we known the FCC would address the problem, we would have sent an email much sooner. Hopefully, you receive enough emails to convince the FCC that this is a real problem; and that we would like the problem addressed and corrected.

Yours In Christ,

Jim and Debby Wooff  
[jimwooffjr@yahoo.com](mailto:jimwooffjr@yahoo.com)  
[dwooff@sbcglobal.net](mailto:dwooff@sbcglobal.net)

---

**From:** Ron Triggs [mailto:RTriggs@ojaiclc.org]  
**Sent:** Monday, March 20, 2006 5:19 PM  
**To:** Jon Fugler  
**Subject:** Interference issue

I am writing regarding interference with our local K-LIFE 89.5 FM signal. I have recently noticed while driving to Ventura interference from another station, KPBS-FM, from Oak View, through Casitas Springs and into the west end of Ventura.

**Ron Triggs**  
**Ojai, CA**

---

**From:** Mikkii Bouchard [mailto:Mikkii.Bouchard@ventura.org]  
**Sent:** Monday, March 20, 2006 3:52 PM  
**To:** Jon Fugler  
**Subject:** interference  
**Importance:** High

I've had a lot of interference from KPBS-FM, San Diego.  
I live in Ventura, on Saratoga Ave, corner of Telephone Rd.  
What can be done? Thanks for your help!

**Mikkii Bouchard**  
**805/645-1368**

# **REQUEST FOR WAIVER**

## **Attachment C**

### **Consent of KMRO**





March 30, 2006

Mr. Frank Lanzone, Jr.  
President  
KCBX, Inc.  
4100 Vachell Lane  
San Luis Obispo, California 93401

RE: Station KSBX(FM), Santa Barbara, California


Dear Mr. Lanzone:

This letter is in response to your request concerning improvements to your Station KSBX, Santa Barbara, California.

We understand that KSBX will propose to the FCC that the station frequency be changed from 89.5 MHz to 89.9 MHz, in order to eliminate interference received by KSBX's listeners from co-channel Station KPBS-FM in San Diego. You informed us that KSBX's operation on 89.9 MHz may cause interference to reception of our Station KMRO in a small area of 620 meters around the KSBX transmitter site. We understand there is no population residing within this area.

Due to the very small area in which interference is expected to occur, by this letter we grant our consent, and we will not object, to the frequency change for KSBX. However, due to the close proximity of operating frequencies of KSBX and KMRO FM-2, this grant is made with the understanding that once KSBX begins operating on the new frequency, if any interference to KMRO or in combination with KMRO is generated as a result of the KSBX upgrade, KSBX will cease operations immediately, and take remedial steps at KSBX's expense to correct any and all interference involving KMRO FM-2.

Sincerely yours,

  
Philip Guthrie  
President

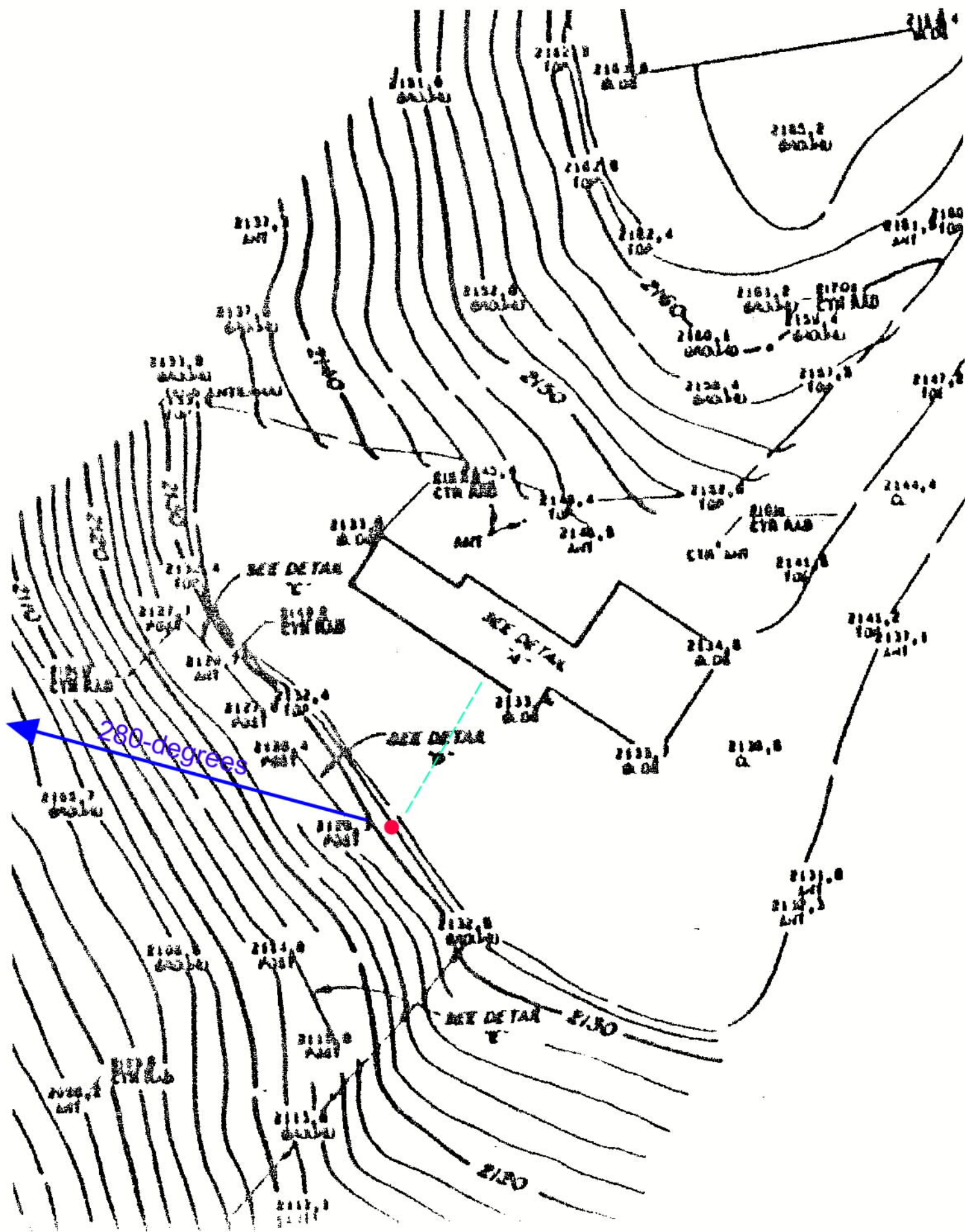
KMRO 90.3 FM, Ventura County/San Fernando Valley • KGZO 90.9 FM, Bakersfield • KLTJ 1390 AM, Los Angeles/Orange Counties  
KEYQ 980 AM, Fresno • KEZY 1240AM, San Bernardino/Riverside Counties • KSDO 1130 AM, San Diego/Tijuana

The Association for Community Education, Inc.  
2310 Ponderosa Drive, Suite 28, Camarillo, California 93010 • (805) 482-4797 • FAX: (805) 388-5202

# **REQUEST FOR WAIVER**

## **Attachment D**

### **Topographic Contour Map of KSBX Transmitter Site**



# **REQUEST FOR WAIVER**

## **Attachment E**

### **Photographs of KSBX Transmitter Site**



Pole on which KSBX antenna is mounted.



Terrain below Gibraltar Peak.