

## Exhibit 12.1 - Copy of Existing Antenna Structure Registration

### Registration Detail

Reg Number	1059603	Status	Constructed
File Number	A0069982	Constructed	08/15/1996
FAA Study	95-AGL-3678-OE	EMI	No
FAA Issue Date	06/26/1996	NEPA	No

### Antenna Structure

Structure Type TOWER - Free standing or Guyed Structure used for Communications Purposes

#### Location (in NAD83 Coordinates)

Lat/Long 42-18-44.0 N 085-12-02.0 W 176 MEACHEM AVE  
City, State BATTLE CREEK , MI

Center of  
AM Array

#### Heights (meters)

Elevation of Site Above Mean Sea Level	Overall Height Above Ground (AGL)
277.0	52.0
Overall Height Above Mean Sea Level	Overall Height Above Ground w/o Appurtenances
329.0	46.0

#### Painting and Lighting Specifications

None

### Owner & Contact Information

FRN

Licensee ID

#### Owner

RADIO COMMUNICATIONS INC  
Attention To: C DONALD CATHCART  
176 MEACHEM AVE  
BATTLE CREEK , MI 49015

P: (616)963-4171  
E: RADCOM@VOYAGER.NET

#### Contact

P:  
E:

### Last Action Status

Status	Constructed	Received	01/11/1999
Purpose	New	Entered	01/13/1999
Mode	Mail In (Manual)		

### Related Applications

01/11/1999 A0069982 - New (NE)

### Comments

#### Comments

None



## Exhibit 12.2

### Vertical Plan of Antenna System

The site is located at 176 Meachem Ave,  
the city of Battle Creek, Calhoun County, Michigan.

Site Location (NAD 27)

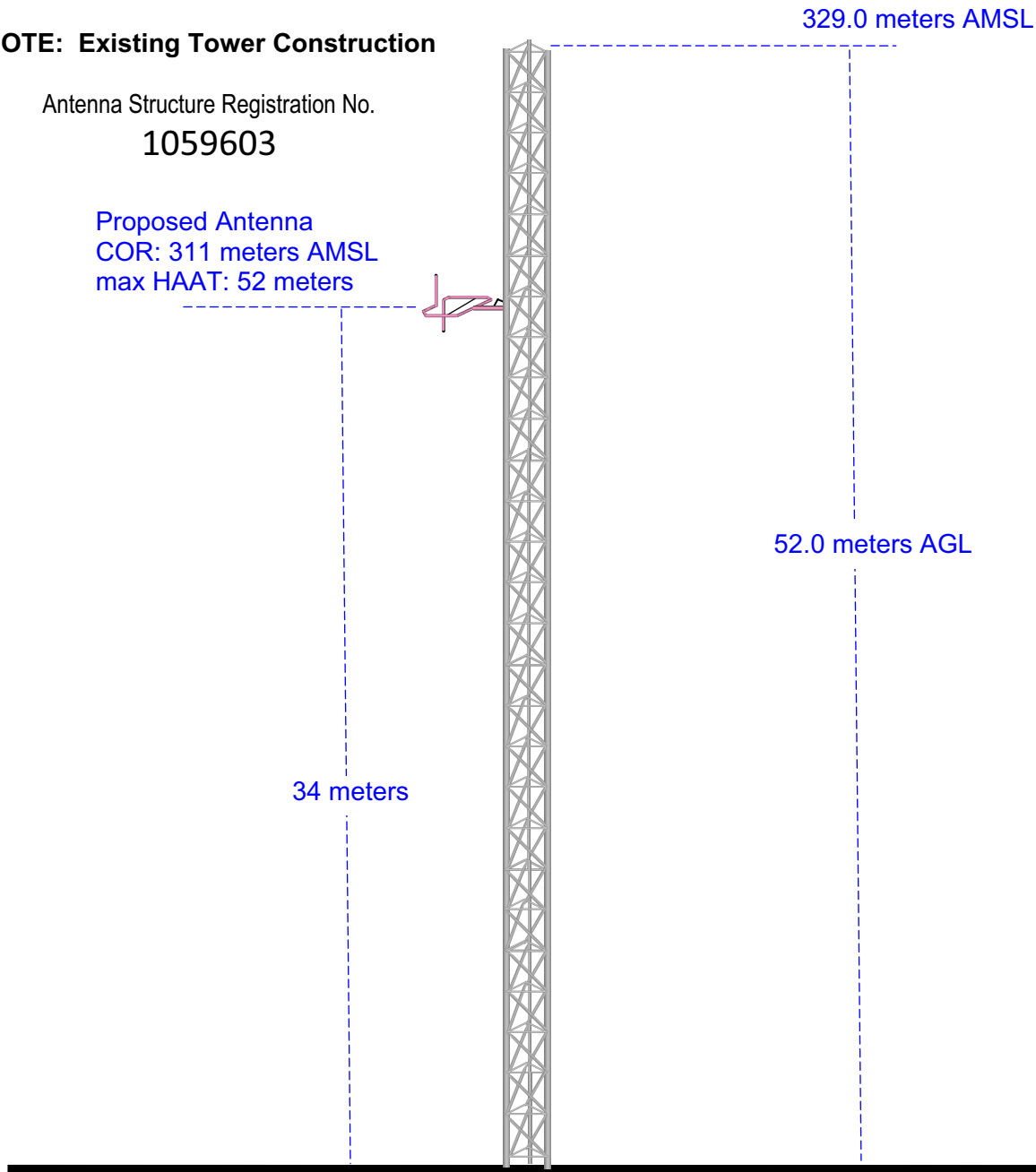
NL: 42° 18' 44"

WL: 85° 12' 02"

**NOTE: Existing Tower Construction**

Antenna Structure Registration No.  
1059603

Proposed Antenna  
COR: 311 meters AMSL  
max HAAT: 52 meters



Ground Elevation = 277.0 m AMSL  
Drawing is not to Scale

**MUNN-REESE, INC.**  
Broadcast Engineering Consultants  
Coldwater, MI 49036

## Exhibit 12.3 Present & Proposed Service Contour Study

**W222BB.P**  
Proposed Operation  
Latitude: 42-18-44 N  
Longitude: 085-12-02 W  
ERP: 0.08 kW  
Channel: 222  
Frequency: 92.3 MHz  
AMSL Height: 311.0 m  
Horiz. Pattern: Omni  
Vert. Pattern: No  
Prop Model: None

60 dBu Contour  
Total Population: 65,896  
Total Area: 113.44 sq. km

**W222BB.L**  
BLFT20070126AFA  
Latitude: 42-15-38 N  
Longitude: 085-11-34 W  
ERP: 0.12 kW  
Channel: 222  
Frequency: 92.3 MHz  
AMSL Height: 313.0 m  
Horiz. Pattern: Omni  
Vert. Pattern: No  
Prop Model: None

60 dBu Contour  
Total Population: 45,895  
Total Area: 132.89 sq. km

Augusta

Springfield

Battle Creek

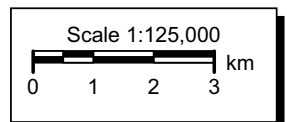
W222BB.P

W222BB.L

Proposed 60 dBu f(50:50)

Present 60 dBu f(50:50)

Climax



V-Soft Communications LLC ® ©

Barry

Eaton

## Exhibit 12.4 Proposed vs. Primary Service Contour Study

Present 40 dBu f(50:50)

W222BB.P

Proposed 60 dBu f(50:50)

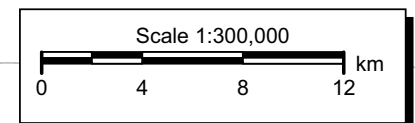
Present 60 dBu f(50:50)

Calhoun

**W222BB.P**  
Proposed Operation  
Latitude: 42-18-44 N  
Longitude: 085-12-02 W  
ERP: 0.08 kW  
Channel: 222  
Frequency: 92.3 MHz  
AMSL Height: 311.0 m  
Horiz. Pattern: Omni  
Vert. Pattern: No  
Prop Model: None

**WSAE**  
BLED19931201KE  
Latitude: 42-09-13 N  
Longitude: 084-32-58 W  
ERP: 3.90 kW  
Channel: 295  
Frequency: 106.9 MHz  
AMSL Height: 417.0 m  
Horiz. Pattern: Omni  
Vert. Pattern: No  
Prop Model: None

WSAE



# Exhibit 12.5

## Tabulation of Proposed Allocation

Tabulations of contours will be supplied upon request.

### Spring Arbor University

REFERENCE		CH# 222D - 92.3 MHz, Pwr= 0.08 kW, HAAT= 36.7 M, COR= 311 M								DISPLAY DATES	
42 18 44.0 N.		Average Protected F(50-50)= 5.85 km								DATA	03-08-08
85 12 02.0 W.										SEARCH	03-13-08
CH	CALL	TYPE	ANT	AZI	DIST	LAT	PWR(kW)	INT(km)	PRO(km)	*IN*	*OUT*
CITY		STATE		<--	FILE #	LNG	HAAT(M)	COR(M)	LICENSEE	(Overlap in km)	
222D	W222BB	LIC	_C_	173.6	5.77	42 15 38.0	0.120	24.0	7.2	-23.61*<	-18.94*<
Battle Creek		MI		353.7	BLFT20070126AFA	85 11 34.0		313	Spring Arbor University		
223A	WZUU	LIC	ZC_	261.1	40.28	42 15 19.0	6.000	45.3	29.3	-11.03*<	2.35
Mattawan		MI		80.8	BLH20070104ACW	85 40 58.0	98	361	Forum Communications, Inc.		
223A	AL6573	RSV	___	244.7	47.49	42 07 45.0	6.000	45.1	28.2	-2.95<	11.72
Mattawan		MI		64.4	RM11267	85 43 13.0	100	370			
225D	W225BB	LIC	_V_	44.1	5.51	42 20 52.0	0.010	0.2	3.2	-1.54*<	1.73
Battle Creek		MI		224.1	BLFT20070709AAK	85 09 14.0		259	Horizon Christian Fellowsh		
220A	WTNP	APP	DCX	323.2	19.66	42 27 13.0	6.000	1.6	16.4	11.51	2.61
Richland		MI		143.1	BMPED20070907AGN	85 20 39.0	72	352	Horizon Christian Fellowsh		
220A	WTNP	CP	DVX	322.3	24.11	42 29 01.0	4.500	1.8	20.3	15.77	3.21
Richland		MI		142.2	BNPED19991117ABI	85 22 49.0	100	381	Horizon Christian Fellowsh		
221A	WCSR-FM	LIC	_CN	132.3	63.24	41 55 41.0	6.000	40.2	26.1	17.48	29.27
Hillsdale		MI		312.7	BLH19910918KB	84 38 10.0	74	411	Wcsr, Inc		
Class B1 with respect to Canada-Accepted by Canada 901108											
219D	W219CA	LIC	_V_	266.7	31.21	42 17 44.0	0.050	0.5	4.7	24.00	25.87
Kalamazoo		MI		86.5	BLFT20000926AND	85 34 42.0	-39	224	Pensacola Christian Colleg		
225D	W225BA	LIC	_V_	349.3	38.04	42 38 55.0	0.010	0.2	3.2	31.91	34.26
Hastings		MI		169.2	BLFT20070622AEB	85 17 13.0		245	Horizon Christian Fellowsh		
223D	W223AM	LIC	_C_	178.1	48.68	41 52 27.0	0.180	9.3	6.5	34.01	34.62
Bronson		MI		358.1	BLFT20070514AAG	85 10 50.0		290	Horizon Christian Fellowsh		
221A	WQTX	LIC	_CN	38.3	82.35	42 53 29.0	4.000	40.9	26.7	34.88	46.16
St. Johns		MI		218.7	BLH19900905KA	84 34 27.0	122	363	Rubber City Radio Group		
Class B1 with respect to Canada-Accepted by Canada 901108											
222B	WMXD	LIC	ZCN	88.6	177.70	42 19 55.0	45.000	135.1	63.7	36.67	85.88
Detroit		MI		270.0	BLH19970303KA	83 02 42.0	146	331	Amfm Radio Licenses, L.L.C		
219B	WUOM	LIC	_CN	83.8	106.53	42 24 27.0	93.000	8.6	65.7	92.03	40.23
Ann Arbor		MI		264.7	BLED19990204KA	83 54 50.0	237	513	Regents of The University		
Specially Negotiated Allotment-Grandfathered at 93kw @ 238m											
221A	WHPD	LIC	_CN	243.9	78.70	41 59 52.0	3.300	31.4	21.3	41.96	49.91
Dowagiac		MI		63.3	BMLH199111112KA	86 03 14.0	91	342	Lesea Broadcasting Corpora		
Class B1 with respect to Canada-Accepted by Canada 901108											
225A	WJZL	LIC	_CX	48.4	70.77	42 43 58.0	5.400	2.7	28.0	61.05	42.17
Grand Ledge		MI		228.8	BLH20071119AEL	84 33 13.0	105	365	Rubber City Radio Group, I		

Terrain database is NGDC 30 SEC Distance + R = 73.215 or FCC Spacings in KM, Distance + M = Margin in KM  
 Contour distances are on direct line to and from reference station. Reference zone = 1. With 3rd Adj Channels.  
 Ant Column: (D= DA Standard, Z= DA 73.215, N= Not DA 73.215, \_= Omni), Polarization (C,H,V,E), Beamtilt(Y,N,X)  
 "\*"affixed to 'IN' or 'OUT' values = site inside protected contour.  
 Reference station has protected zone issue: Canada- AM tower

**Munn-Reese, Inc.**

Broadcast Engineering Consultants  
 Coldwater, MI 49036

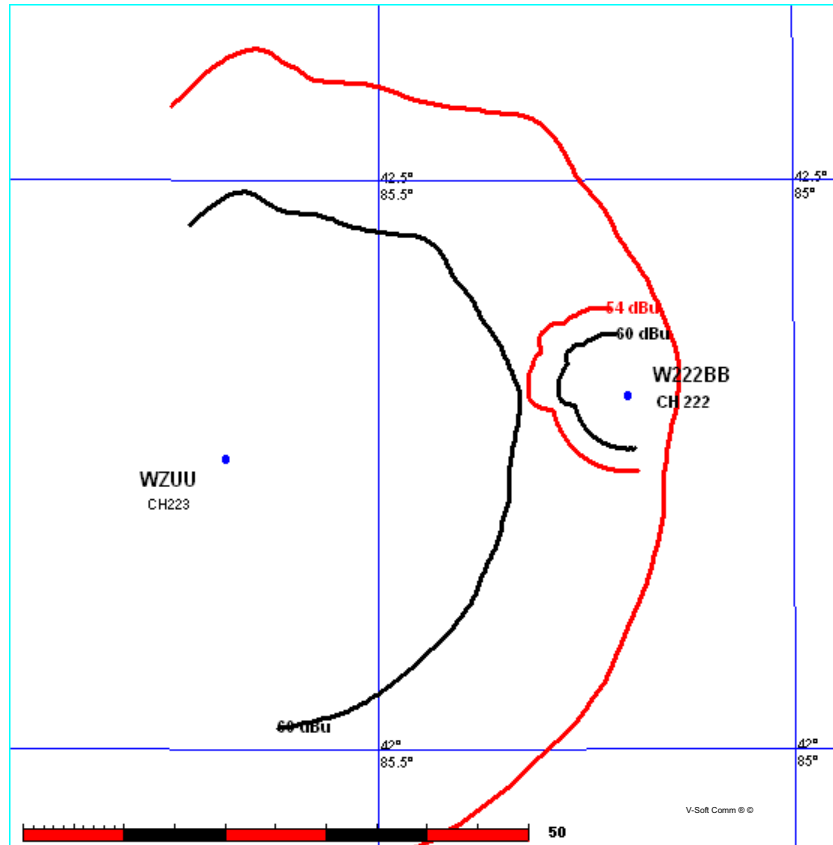
# Exhibit 12.6

## Contour Protection Studies Toward Select Station(s)

Spring Arbor University

FMCommander Single Allocation Study  
03-14-2008

W222BB CH 222 D	WZUU CH 223 A
0.08 kW, 311 M COR	6.0 kW, 360.6 M COR DA
Prot. = 60 dBu	Prot. = 60 dBu
Intef. = 54 dBu	Intef. = 54 dBu

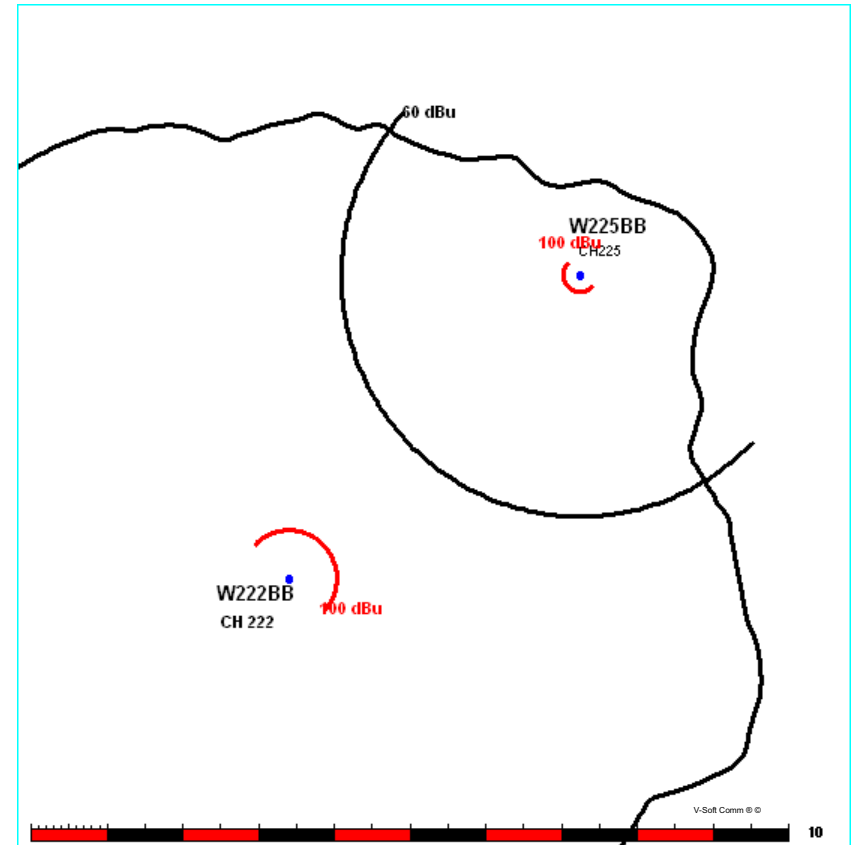


Tabulations of contours will be supplied upon request.

Spring Arbor University

FMCommander Single Allocation Study  
03-14-2008

W222BB CH 222 D	W225BB CH 225 D
0.08 kW, 311 M COR	0.01 kW, 259 M COR
Prot. = 60 dBu	Prot. = 60 dBu
Intef. = 100 dBu	Intef. = 100 dBu



Tabulations of contours will be supplied upon request.

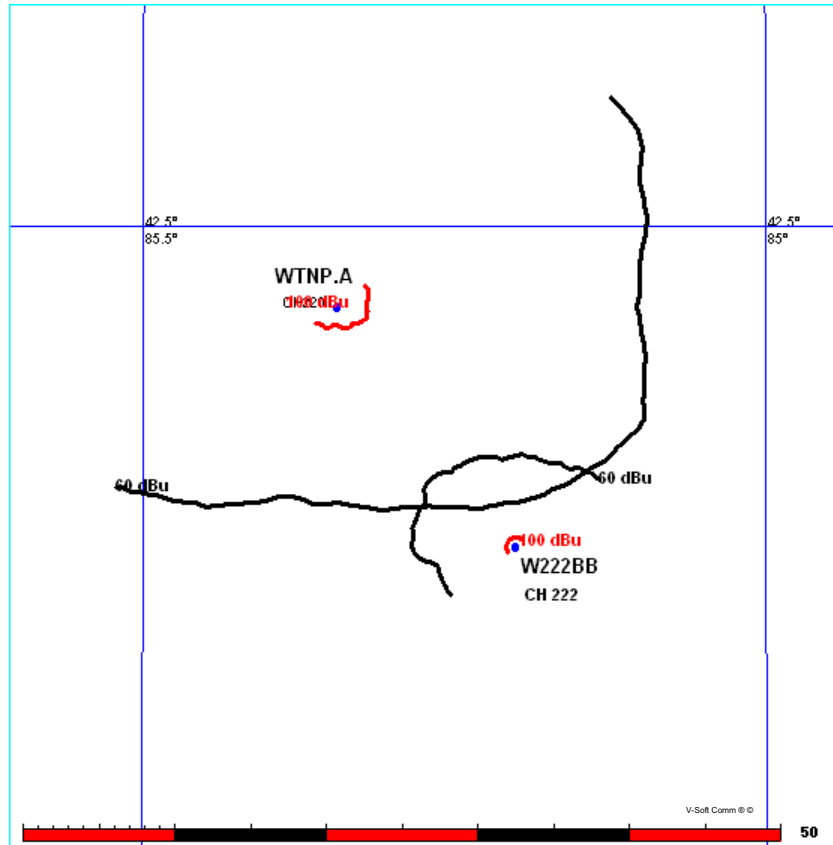
# Exhibit 12.6

## Contour Protection Studies Toward Select Station(s)

Spring Arbor University

FMCommander Single Allocation Study  
03-14-2008

W222BB CH 222 D	WTNP-A CH 220 A	BMPED20070907AGN
0.08 kW 311 M COR	6.0 kW, 352 M COR DA	
Prot. = 60 dBu	Prot. = 60 dBu	
Intef. = 100 dBu	Intef. = 100 dBu	

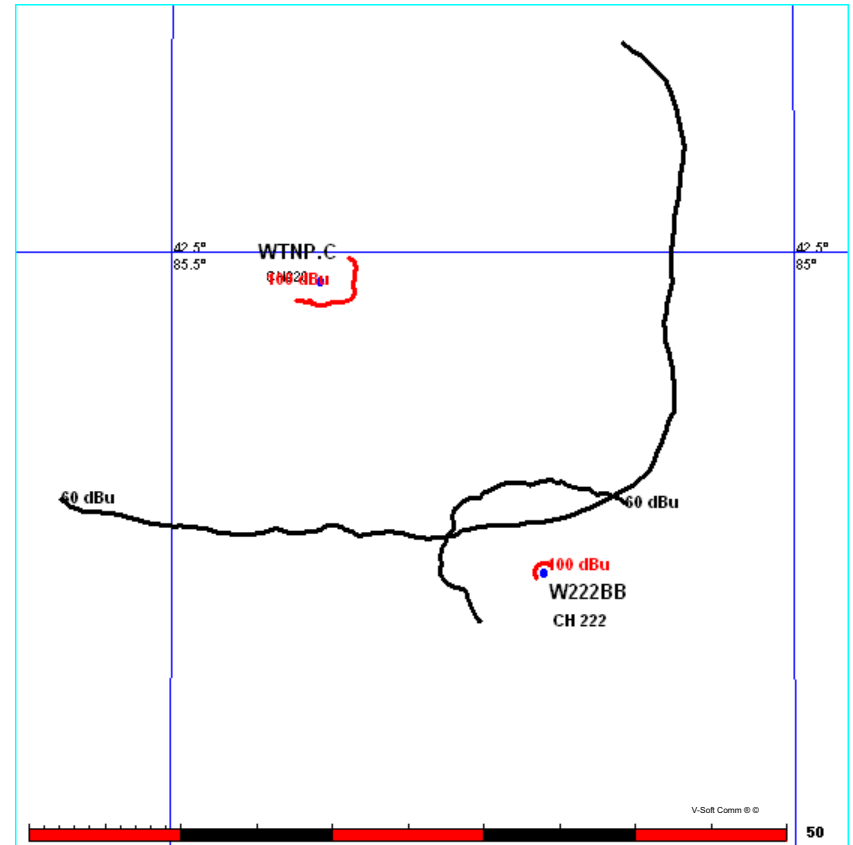


Tabulations of contours will be supplied upon request.

Spring Arbor University

FMCommander Single Allocation Study  
03-14-2008

W222BB CH 222 D	WTNP-C CH 220 A	BNPED19991117ABI
0.08 kW 311 M COR	4.5 kW, 381 M COR DA	
Prot. = 60 dBu	Prot. = 60 dBu	
Intef. = 100 dBu	Intef. = 100 dBu	



Tabulations of contours will be supplied upon request.