

Search of channel 201A (88.1 MHz), at N. 41 57 26, W. 83 15 30.

CALL	CITY	ST	CHN	CL	S	DIST	SEPN	BRNG	CLR	HGT	PWR	
WBFH	BLOOMFIELD HILLS	MI	201	A	L	69.0	83.4	358.1ø	n/a			/A
WSDP	PLYMOUTH	MI	201	A	L	47.6	78.5	335.5ø	0.5	22	.2	/1
NEW	PLYMOUTH	MI	201	A	A	50.4	76.8	338.9ø	1.5	16	.1	
WBGU	BOWLING GREEN	OH	201	A	L	72.1	83.9	206.4ø	0.9	54	.450	/1
CBEEFM	CHATHAM	ON	201	A		111.4	132.0	60.6ø	0.6	100	3.00	/2*
WCBN-F	ANN ARBOR	MI	202	A	L	53.1	44.7	312.0ø	8.4 v	54	.2	/3
WXTS-F	TOLEDO	OH	202	A	L	40.4	42.1	217.5ø	1.7	38	.105	/3
WXUT	TOLEDO	OH	202	A	L	44.6	43.5	221.7ø	1.1	58	.1	/3
NEW	TOLEDO	OH	202	A	A	41.3	41.7	219.0ø	1.4	35	.1	
980522	SANDUSKY	OH	203	B1	A	71.6	40.1	149.2ø	31.5	118	7.70	
981005	SANDUSKY	OH	203	B1	A	71.6	39.5	149.2ø	32.2	111	8.	
CIMX	WINDSOR	ON	204	C1		32.4	90.0	43.0ø	0.0	300	100.	/4
WVMV	DETROIT	MI	254	B	U	49.5	14.0	10.5ø	35.5			

/A See Exhibit A.

/1 See Exhibit 1.

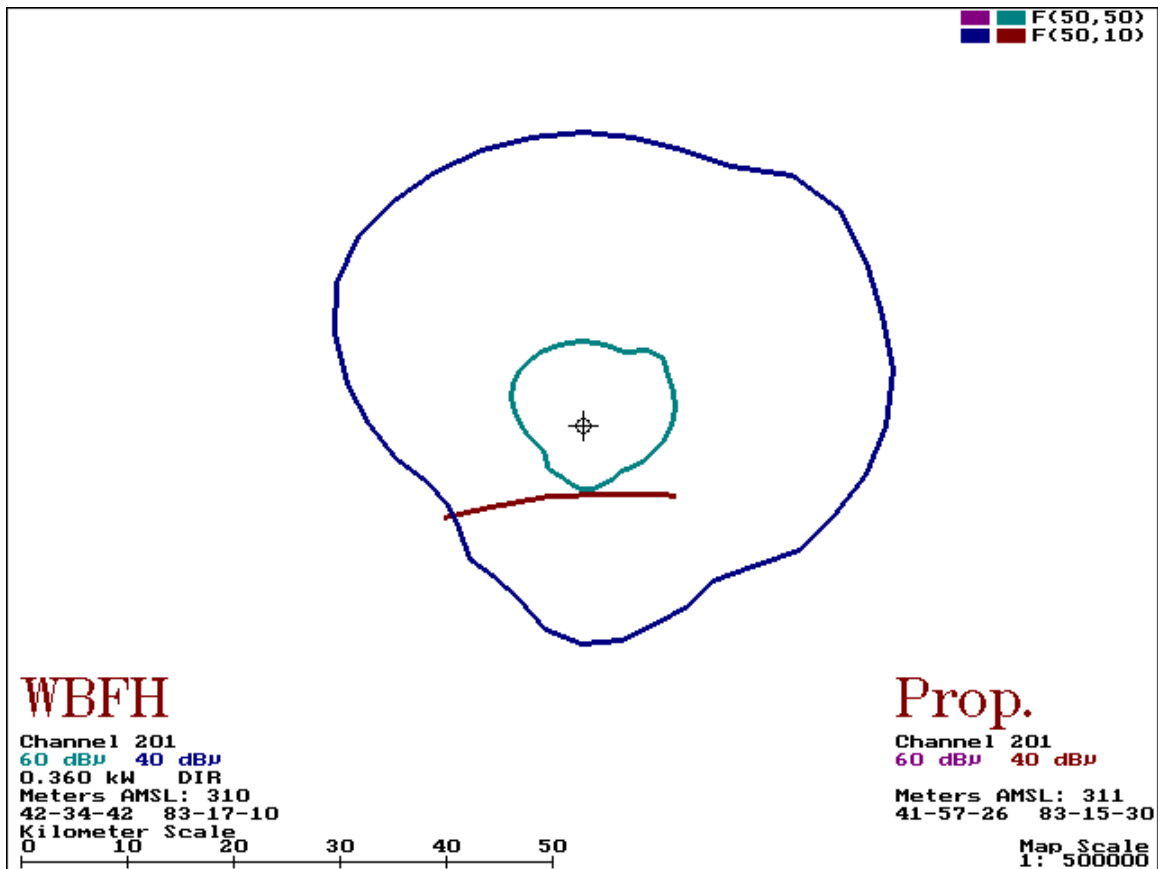
/2 See Exhibit 2.

/3 See Exhibit 3.

/4 See Exhibit 4.

*72 Limited to 3 kW and 100 metres or equivalent.

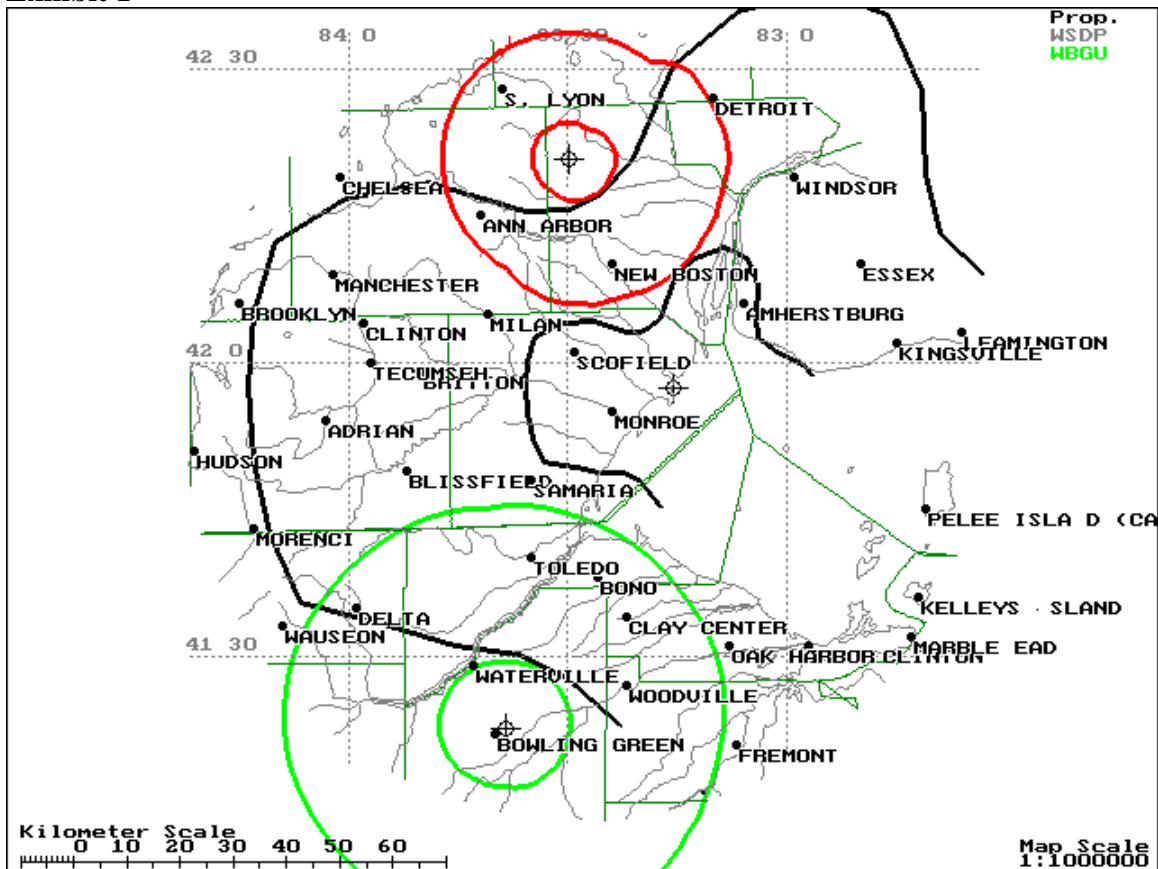
Exhibit A



Clearance is shown with WBFH.

Note: The slope of these field values of the directional antenna is more than what is normally used for commercial stations under 73.316. Current staff policy is requiring non-commercial station to protect other domestic stations with the slope requirement over the arc of their protected contour. In the case of WBFH a slope limitation of 2 db per 10 degrees has been applied in accordance with staff policy over the arc of 352° to 6° true.

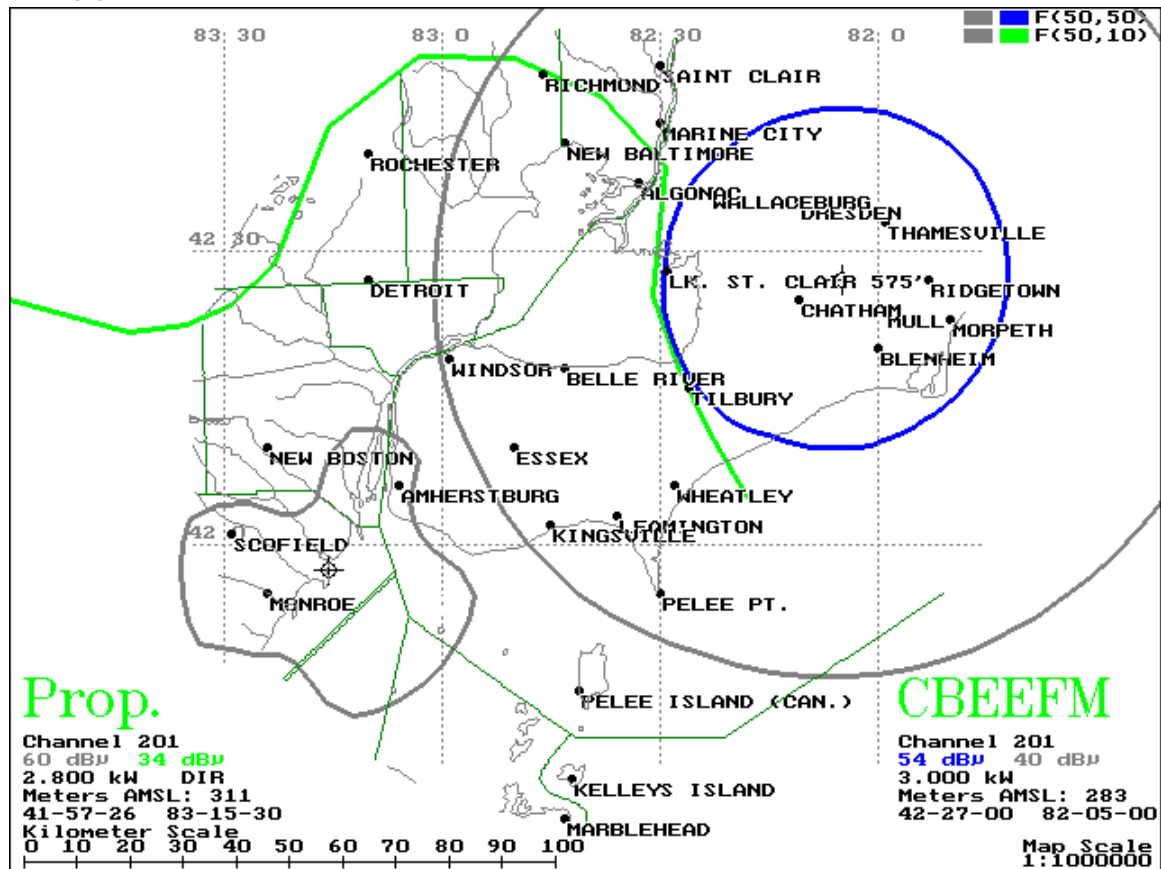
Exhibit 1



Clearance is shown With WBGU and WSDP.

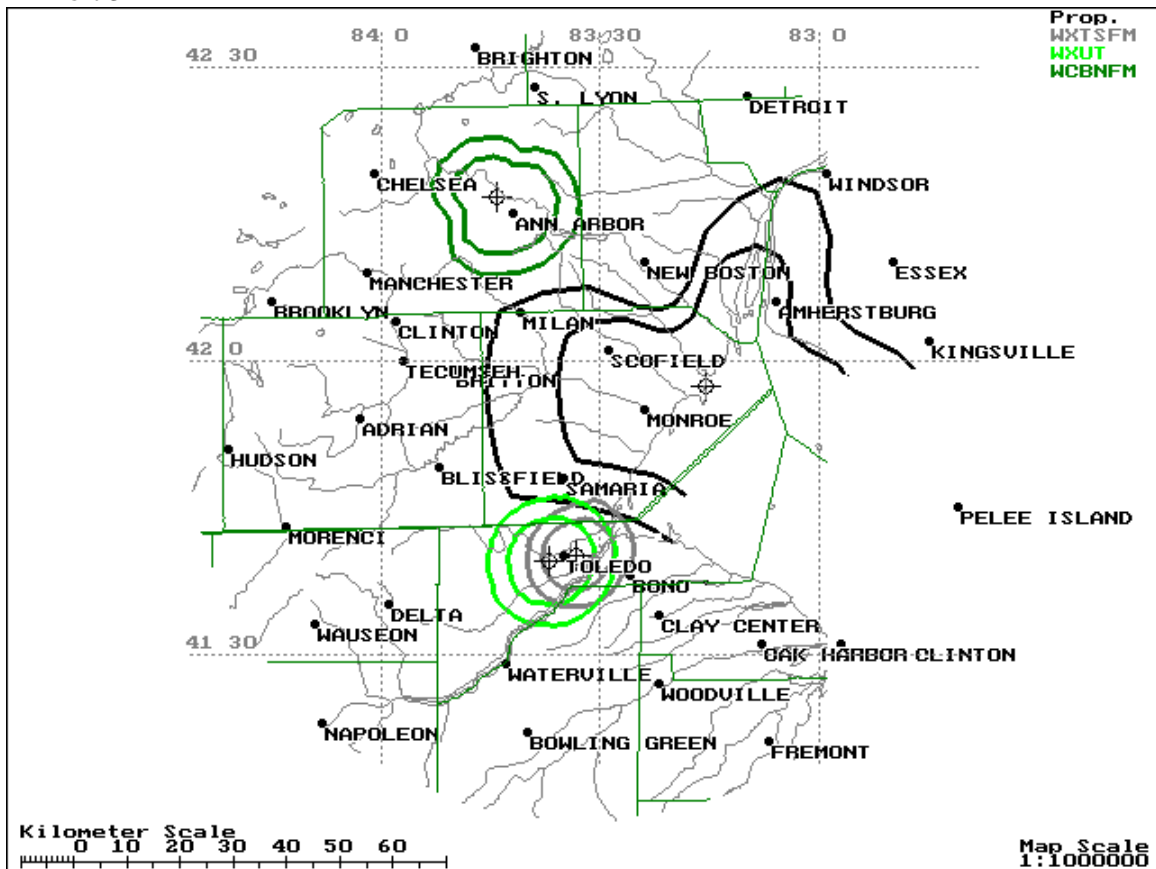
Note: The slope of these field values of the directional antenna is more than what is normally used for commercial stations under 73.316. Current staff policy is requiring non-commercial station to protect other domestic stations with the slope requirement over the arc of their protected contour. A slope limitation of 2 db per 10 degrees has been applied in accordance with staff policy over the arc of 196° to 217° true towards WBGU and 327° to 347° true towards WSDP.

Exhibit 2



CBEE Chatham, ON is listed as an “*72” which means it is limited to 3 kW @ 100 M. The 34-dBu contour of WDTR does not overlap the 54 dBu of the maximum 3 kW class “A” facilities of CBEE. WDTR meets domestic ratios over American soil, which is Commission policy. Concurrence is requested as a specially negotiated short spaced class “A” with respect to Canada. Note: The slope of the directional antenna field values of the directional antenna is more than what is normally used under 73.316. In the case of CBEE this policy doesn’t apply since they are toward a Canadian station.

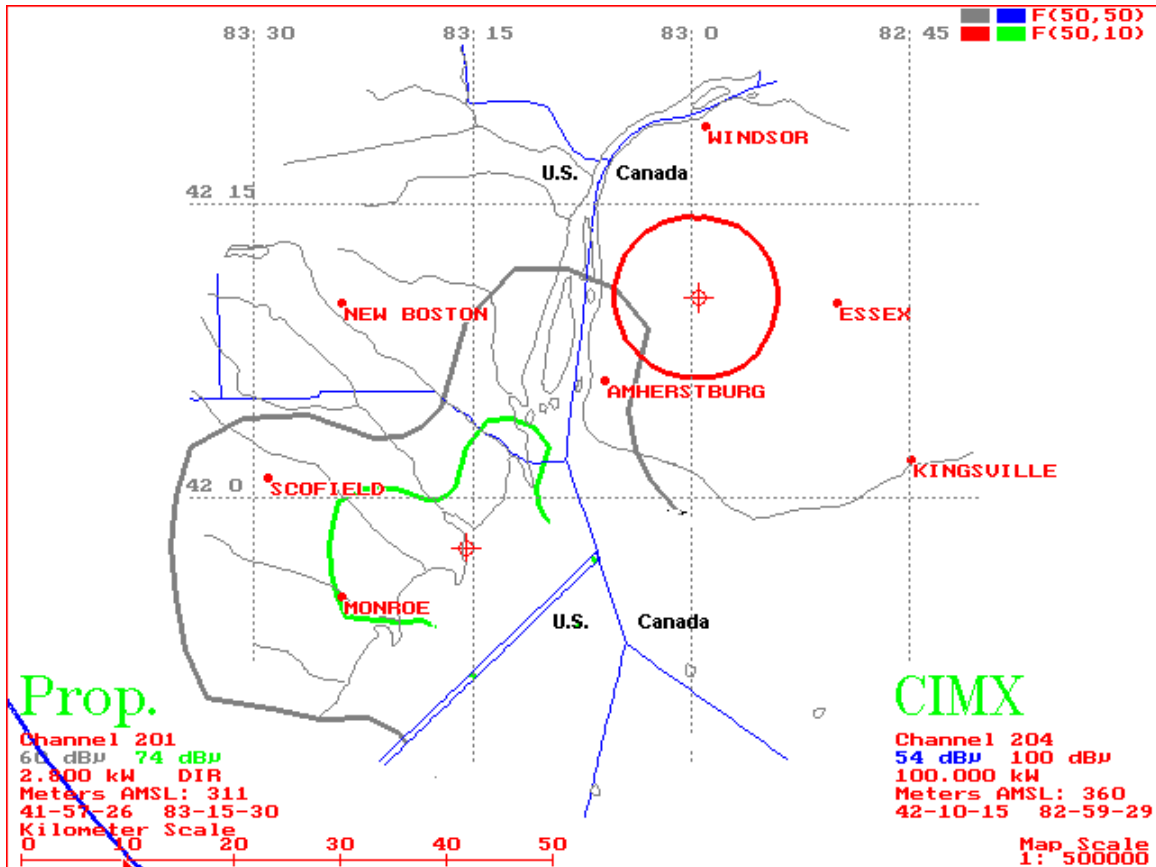
Exhibit 3



Clearance is shown With WXTS and WXUT.

Note: The slope of these field values of the directional antenna is more than what is normally used for commercial stations under 73.316. Current staff policy is requiring non-commercial station to protect other domestic stations with the slope requirement over the arc of their protected contour. A slope limitation of 2 db per 10 degrees has been applied in accordance with staff policy over the arc of 208° to 233° true towards WXTS and WXUT.

Exhibit 4



CIMX Windsor, ON is listed as class C1. The 74-dBu contour of WDTR does not overlap the 54 dBu of CIMX on Canadian soil. WDTR meets domestic ratios over American soil, which is Commission policy. Likewise, the 100 dBu of CIMX does not interfere with WDTR on American soil. Concurrence is requested as a specially negotiated short spaced class "A" with respect to Canada. Note: The slope of the directional antenna field values of the directional antenna is more than what is normally used under 73.316. In the case of CIMX this policy doesn't apply since they are toward a Canadian station.