

EXHIBIT 13

Waiver Request of Section 74.1204

Minor Displacement Change Request

K204EV Missoula to Channel 220 / 33 Watts ERP

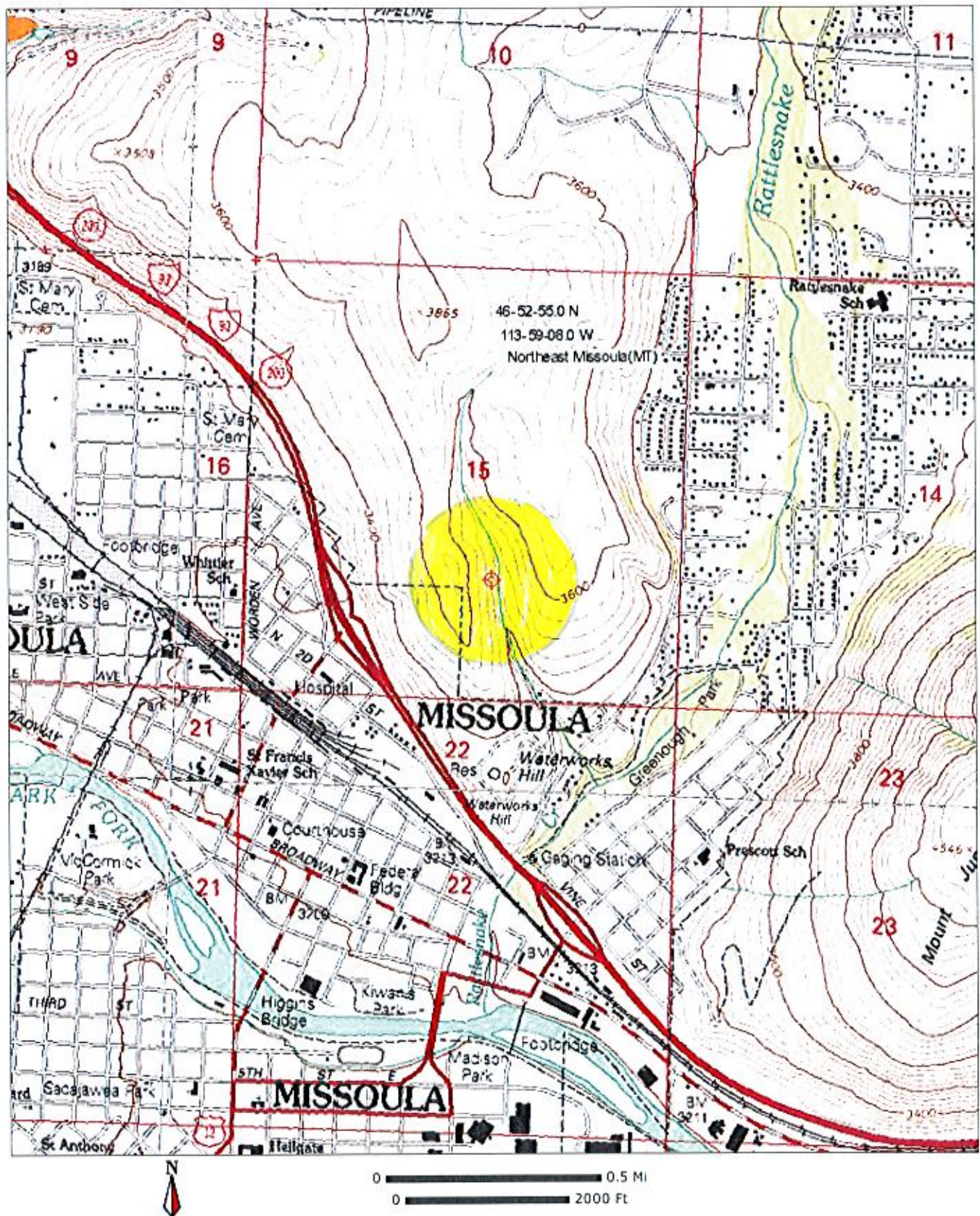
October 2010

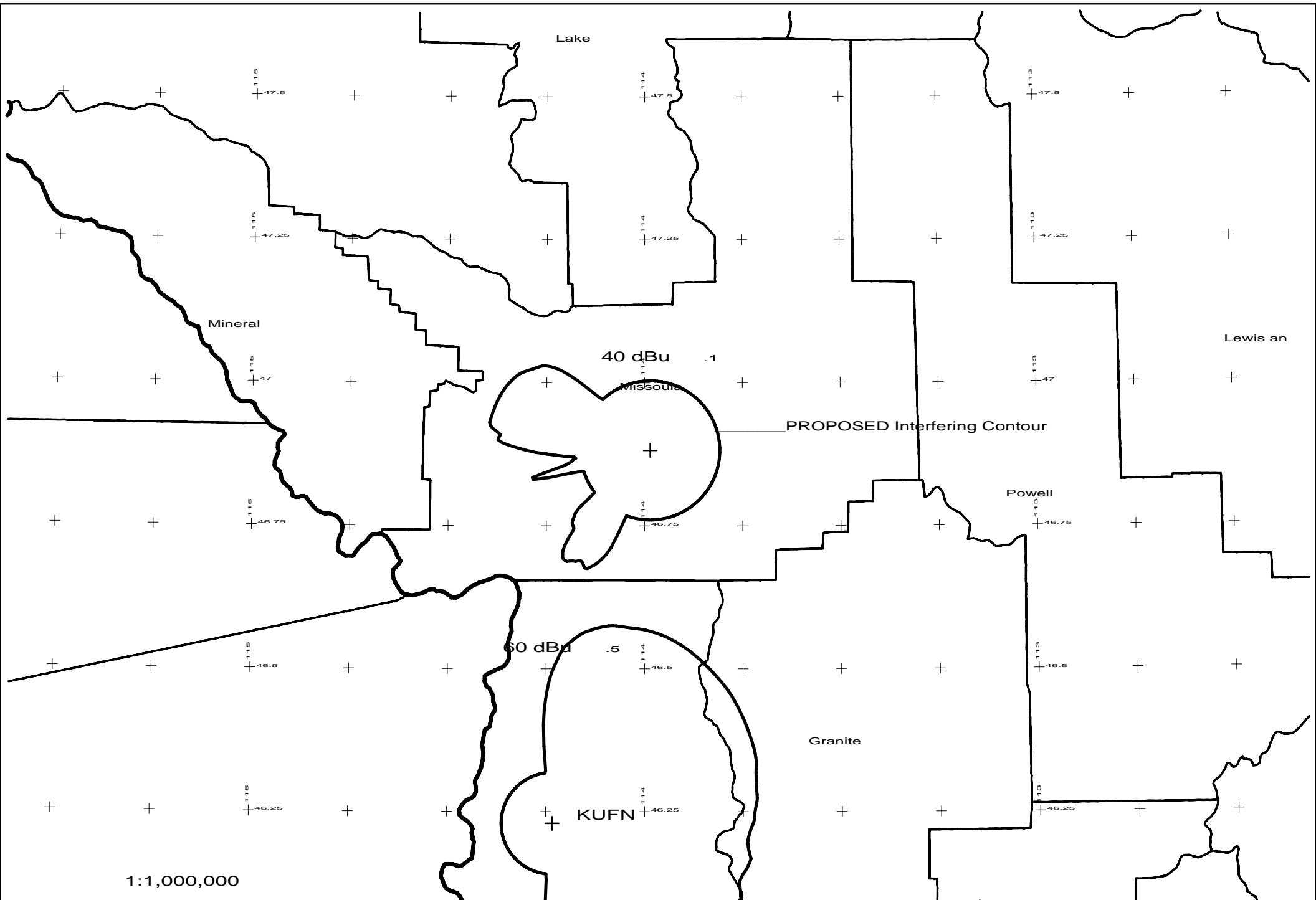
Calvary Chapel of Twin Falls, Inc.

The proposed site is contained entirely inside the service contour of second-adjacent FM Translator K218AI Rattlesnake Valley, MT

K218AI

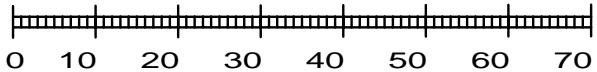
The proposed site is contained entirely inside the service contour of second-adjacent FM Translator K218AI, Class D, 0.034kW, Rattlesnake Valley, MT. The level of least arriving protected F(50,50) signal at the proposed transmitter site is 72.2-dBu. Using the Undesired-to-Desired method for calculating proposed interference, the interfering contour is 112.2-dBu (free-space contour method employed). The interfering signal would, in the worst case at the maximum radial, extend 101 meters, or 331.4 feet, from the base of the tower. This is an existing short rohn tower that is located near an AM tower. K204EV has been licensed to this tower since July 2002. The antenna and coax will not be changed, only the frequency modified, thus not requiring direct measurements. The tower is located in a sparsely populated area. Attached is portion of the USGS Northeast Missoula (MT) Quadrangle map showing a greater than a 500 foot contour, marked in yellow. Because there are no residences, businesses or major roadways, located within the interference contour, Calvary Chapel of Twin Falls, Inc. respectfully requests a waiver of the FM translator contour overlap regulations with respect to second-adjacent FM Translator K218AI, Missoula.





1:1,000,000

Scale in km



PROP 220D .033kW 1122M AMSL

N. Lat. 46 52 55 W. Lng. 113 59 08

CoChannel

CCTF - 10/10