

EXHIBIT 12

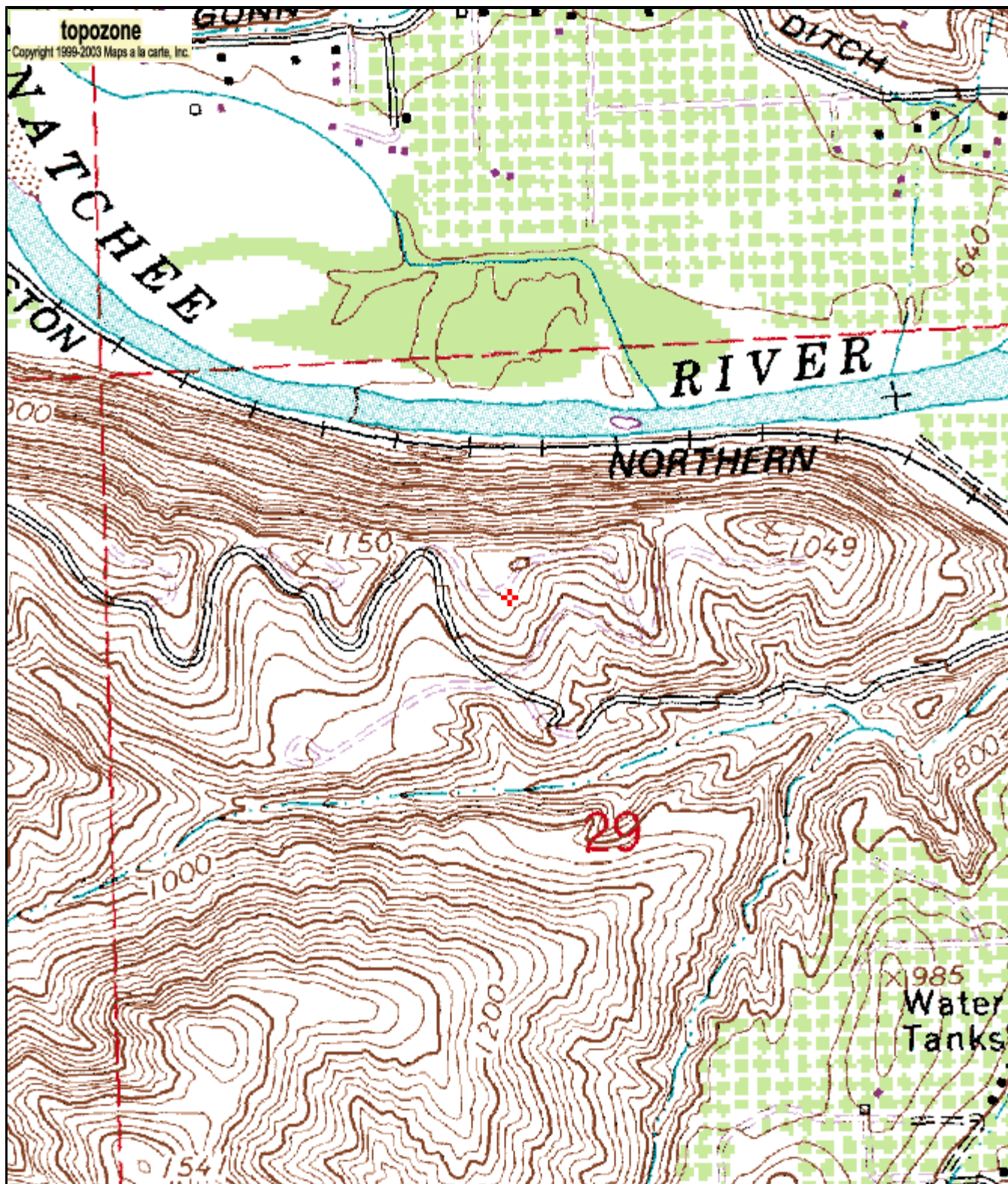
Waiver Request of Section 74.1204

Wenatchee, WA K207CS 100 Watts ERP
Minor Modification – Antenna Change to 208
Calvary Chapel of Twin Falls, Inc.

The proposed site is contained entirely inside the service contour of second-adjacent FM Station KPLW Wenatchee, WA

KPLW

The proposed site is contained entirely inside the service contour of second-adjacent FM Station KPLW, Channel 210, 6kW, Wenatchee, WA. The level of least arriving protected F(50,50) signal at the proposed transmitter site is 85.7-dBu. Using the Undesired-to-Desired method for calculating proposed interference, the interfering contour with respect to KPLW 125.7-dBu (free-space contour method employed). The interfering signal would, in the worst case at the maximum radial, extend 37 meters from the center of radiation, which exists at 74 meters AGL. This proposal is to only change channel/frequency and no other changes will be made with the equipment on the tower. This tower is located in a sparsely populated area, as shown by the attached USGS Wenatchee (WA) Quadrangle. Because there are no residences, businesses or major roads that are located within this interference contour, Calvary Chapel of Twin Falls, Inc. respectfully requests a waiver of the FM translator contour overlap regulations with respect to second-adjacent FM Station KPLW.



0 0.1 0.2 0.3 0.4 0.5 km
0 0.09 0.18 0.27 0.36 0.45 mi

47° 27' 44"N, 120° 21' 28"W (NAD27)
KKRT-AM (Wenatchee), USGS Wenatchee (WA) Quadrangle
Projection is UTM Zone 10 NAD83 Datum

* M
G
M=17.719
G=1.947