

EXHIBIT 13

Waiver Request of Section 74.1204

W285DI Binghamton, NY Channel 285 3.5Watts ERP

Minor Site Change

January 2015

Calvary Chapel of Twin Falls, Inc.

The proposed site is contained entirely inside the service contour of second-adjacent FM translator Station W283AG Binghamton.

W285DI

The proposed site is contained entirely inside the service contour of second-adjacent FM translator Station W283AG 203D, .075kW Binghamton, NY. The level of least arriving protected F(50,50) signal is 0-dBu because the translator is located on the same tower as the proposed. The U/D proposed interfering contour is 140-dBu (free-space contour method employed). The interfering signal would, in the worst case at the maximum radial, extend 1 meter from the center of radiation, which is proposed at 99 meters AGL. This interference contour does not touch the ground. Attached is a portion of the (NY) Quadrangle showing the site is not located in an area of high rise buildings. There are no residences, businesses or major roadways that are located within this interference contour, therefore Calvary Chapel of Twin Falls, Inc. respectfully requests a waiver of the FM translator contour overlap regulations with respect second-adjacent FM Translator W283AG.

Calvary Chapel of Twin Falls, Inc.

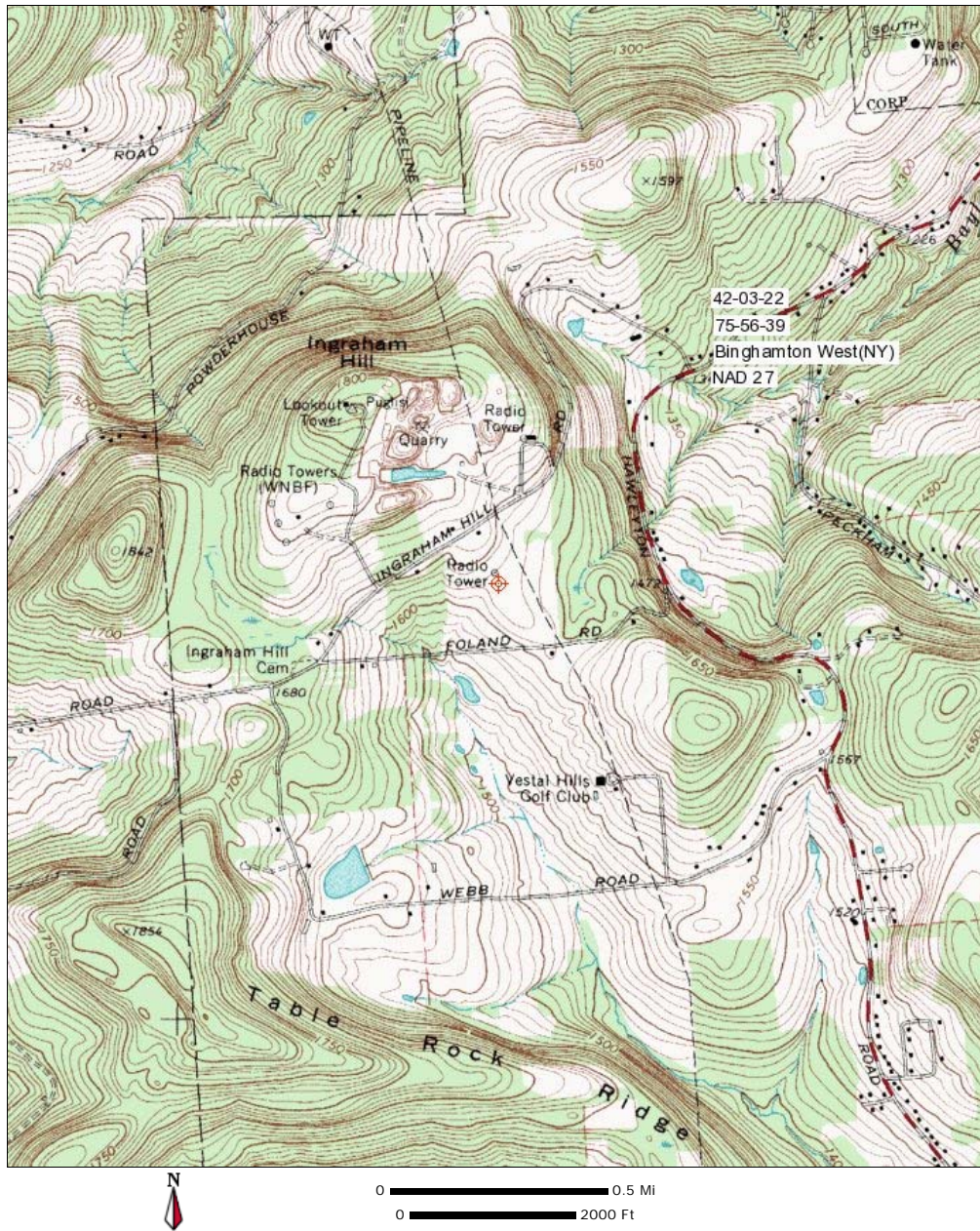
W285DI Binghamton Minor Change
Calvary Chapel Of Twin Falls, Inc.
CH# 285D - 104.9 MHz, Pwr= 0.0035 kW, HAAT= 204.1 M, COR= 594 M
Average Protected F(50-50)= 6.26 km
Omni-directional

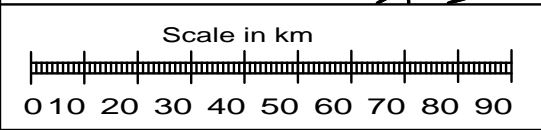
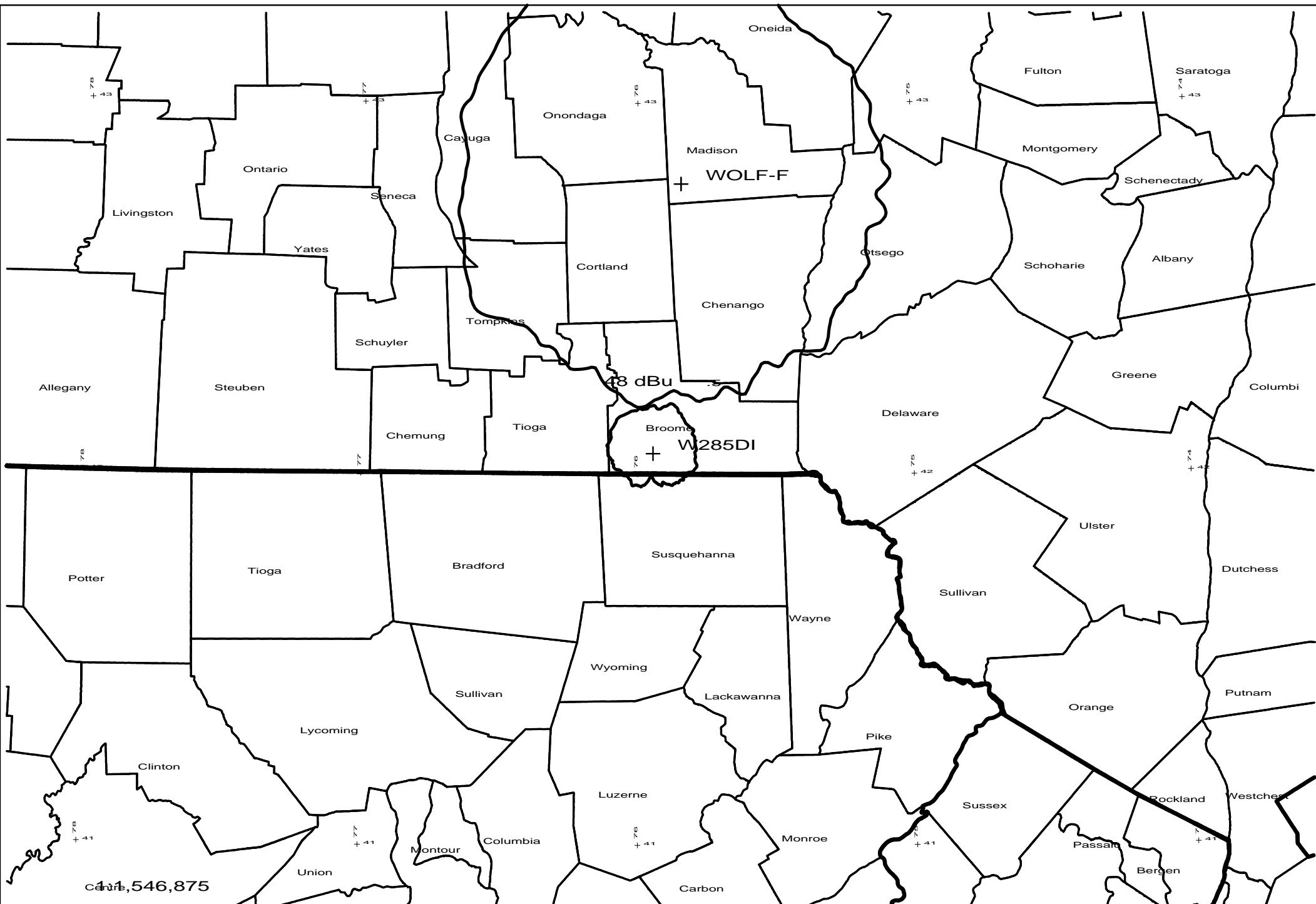
REFERENCE
42 03 22.0 N.
75 56 39.0 W.

DISPLAY DATES
DATA 01-27-15
SEARCH 01-29-15

CH CITY	CALL	TYPE ANT STATE	AZI <--	DI ST FILE #	LAT LNG	PWR(kW) HAAT(M)	INT(km) COR(M)	PRO(km) LICENSEE	*IN* (Overlap in km)	*OUT*
285D Binghamton	W285DI	LIC _C_ NY	30.9 210.9	5.22 BMLFT20090205ABN	42 05 47.0 75 54 42.0	0.050 -37	15.0 341	4.7 Calvary	-17.0*	-24.3*
283D Binghamton	W283AG	LIC DC_ NY	0.0 0.0	0.00 BLFT20130611AAO	42 03 22.0 75 56 39.0	0.075 287	0.6 678	17.5 Equinox	-7.6*	-17.7*
285A Scranton	WRRR	LIC _CX PA	165.3 345.4	71.32 BLH20060623AAT	41 26 06.0 75 43 35.0	0.270 333	70.7 690	23.6 Bold Gold Media Wbs,	-4.4	31.5 L.p
286B Deruyter	WOLF-FM	LIC _CX NY	5.9 186.0	81.16 BLH20060418ADF	42 46 58.0 75 50 28.0	33.000 185	76.8 666	64.7 Foxfur	-2.3	3.1 Communications, LI c
285A Montour Falls	WNGZ	LIC _CN NY	286.0 105.4	80.44 BLH6380	42 15 05.0 76 52 53.0	1.000 146	72.5 559	24.3 Community Broadcasters,	1.3	33.2 LI
283A Hancock	WQFM	CP NCX NY	100.4 280.9	56.70 BPH20130327ACJ	41 57 43.4 75 16 16.9	6.000 34	2.4 505	23.6 The Scranton Times,	48.0	33.0 L.p.
282D Tunkhannock	W282BK	LIC DC_ PA	189.9 9.8	61.29 BLFT20101014AAP	41 30 45.0 76 04 16.0	0.250 351	1.0 748	27.4 Geos	56.1	33.7 Communications
286D Waverly	W286CS	LIC DC_ NY	265.0 84.6	47.18 BLFT20140424AGV	42 01 04.0 76 30 42.0	0.150 -31	5.5 333	3.9 Radi gan	35.4	34.1 Broadcasting Group
284D Sayre	W284CM	CP DC_ PA	258.1 77.7	51.26 BNPFT20130830AQV	41 57 36.0 76 32 58.0	0.010 139	9.0 508	6.4 Smith And Fitzgerald,	36.1	36.0 Part
286B Williamsport	WILQ	LIC _CN PA	222.1 41.4	128.34 BLH19890403KA	41 11 43.0 76 58 18.0	9.200 346	78.7 608	66.6 Backyard Broadcasting Pa,	44.5	51.3 L.p.
284B Fulton	WBBS	LIC _C_ NY	344.1 163.8	133.85 BMLH20050125ABT	43 12 50.0 76 23 47.0	50.000 150	74.8 279	62.0 Citicasters Licenses,	52.2	57.9 Inc.
283B Well sboro	WNBT-FM	LIC _CN PA	253.7 72.8	122.99 BLH6205	41 44 17.0 77 21 50.0	50.000 116	6.3 639	67.3 Farm & Home Broadcasting C	110.7	55.4 L.p
287A Hawley	WYCY	LIC NCN PA	129.6 310.1	82.79 BLH19930908KB	41 34 45.0 75 10 42.0	2.900 146	2.4 517	26.9 Bold Gold Media Group,	74.5	55.8 L.p
288D Ithaca	W288AS	LIC DHN NY	312.2 131.8	63.76 BLFT19850930TG	42 26 23.0 76 31 08.0	0.007 -94	0.0 174	1.0 Cornell Radio Guild, Inc.	56.5	62.6 L.p.
283D Ithaca	W283BQ	LIC _C_ NY	307.8 127.4	65.23 BMLFT20141117AQS	42 24 50.0 76 34 15.0	0.019 60	0.3 357	3.7 Robert A Lynch	57.8	61.4 L.p.
283D Carbondale	W283AO	LIC DH_ PA	145.6 325.8	64.46 BLFT20060427ACA	41 34 38.0 75 30 21.0	0.004 -103	0.0 360	0.6 Bold Gold Media Group,	59.0	63.8 L.p
283D Walton	W283AT	LIC _C_ NY	80.1 260.6	68.81 BLFT20070718AES	42 09 34.0 75 07 26.0	0.070 -141	0.6 401	5.1 Family Life Ministries, In	61.9	63.5 L.p.
283D Scranton	W283BE	CP DE_ PA	165.3 345.5	71.21 BPFT20141020AAH	41 26 09.0 75 43 39.0	0.246	0.2 640	7.8 Geos	66.1	63.3 Communications
283D Scranton	W283BE	LIC DV_ PA	165.3 345.4	71.32 BLFT20140403ABY	41 26 06.0 75 43 35.0	0.027	0.0 657	1.4 Geos	66.3	69.8 Communications
287D Elmira	WKPQ-FM2	CP DV_ NY	271.8 91.2	73.71 BNPFTB20121108AAO	42 04 23.0 76 50 04.0	0.032	0.2 350	3.0 Sound	66.8	70.6 Communications, LI c
282D Honesdale	W282BF	LIC _C_ PA	129.6 310.1	82.79 BLFT20090921ACM	41 34 45.0 75 10 42.0	0.110 121	0.7 496	11.0 Bold Gold Media Group,	76.2	71.7 L.p

Terrain database is USGS 03 SEC , R= 73.215 qualifying spacings or FCC minimum Spacings in KM, M= Margin in KM
Contour distances are on direct line to and from reference station. Reference zone= , Co to 3rd adjacent.
All separation margins (if shown) include rounding. Call signs with strikeout need not be protected.
Ant Column: (D= DA Standard, Z= DA 73.215, N= Not DA 73.215, _= Omni), Polarization (C,H,V,E), Beamtilt(Y,N,X)
***affixed to 'IN' or 'OUT' values = site inside restricted contour.





W285DI 285D .0035kW 594M AMSL

N. Lat. 42 03 22 W. Lng. 75 56 39

W285DI VS WOLF

Calvary Chapel of Twin Fal

