

Exhibit 1-B Overview of KBYS Community of License Change

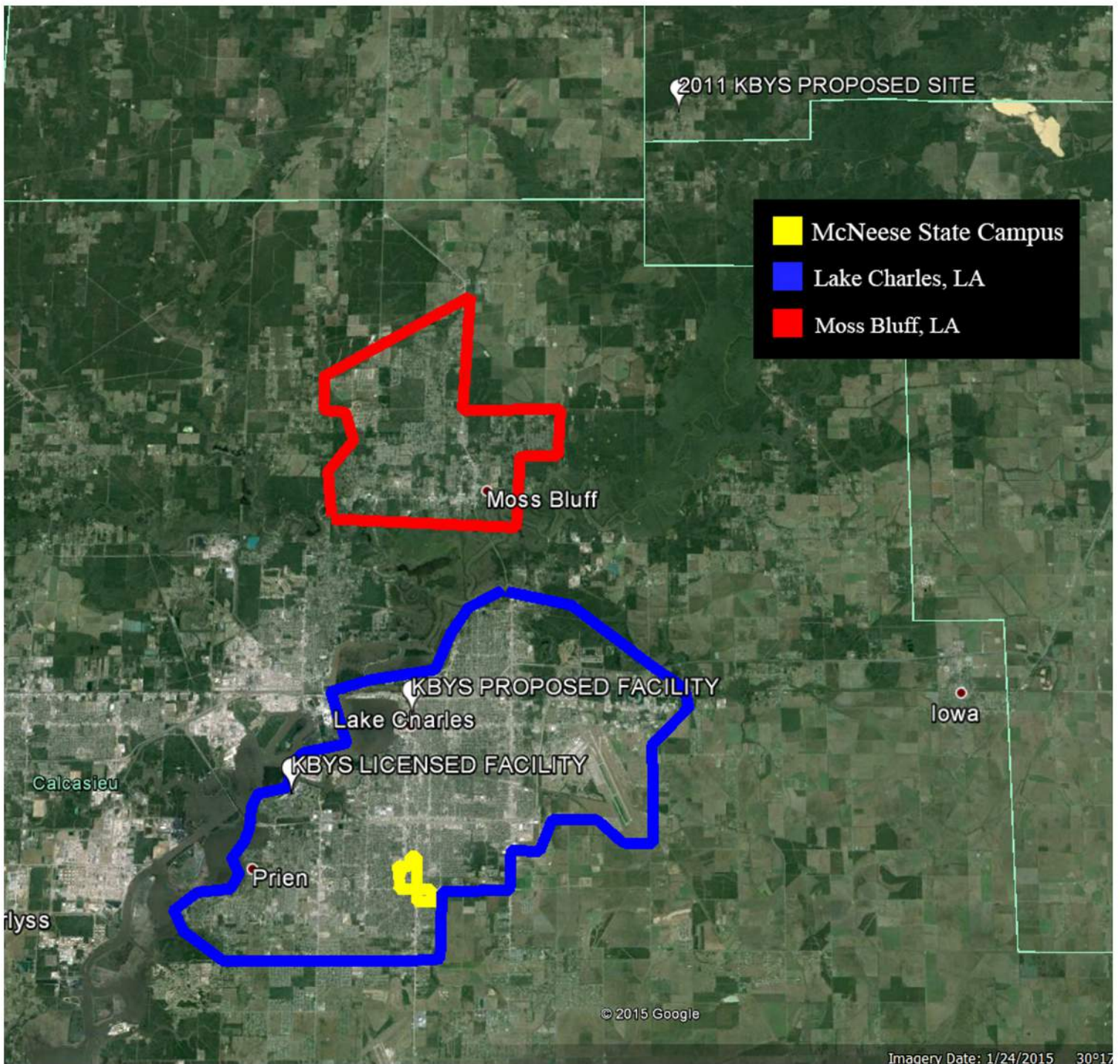


Exhibit 1-B shows an overview of the area containing the Lake Charles and Moss Bluff areas, as well as the campus of McNeece State University (licensee), and the three transmitter locations; the current licensed facility, the originally proposed facility depicted in Exhibit 1-A, and the new proposed KBYS facility in this application. Whereas the programming on KBYS is intended for first and foremost, the campus, students and faculty of McNeece State University, and secondarily the city of Lake Charles, and tertiarily the surrounding communities of Lake Charles, LA. As shown in Exhibit 1-B, the entire campus of McNeece State University is contained within the City of Lake Charles, and is a substantial distance from the community of Moss Bluff, as well as the originally proposed transmitter site. Furthermore, both the current licensed facility of KBYS, as well as the newly proposed site for KBYS are both within Lake Charles city limits, the KBYS community of license should be changed to Lake Charles from Moss Bluff.