

**DELAWDER COMMUNICATIONS, INC.**

P.O. Box 1095  
Ashburn, Virginia 20146-1095  
(703) 299-9222

**ENGINEERING REPORT**

---

**Lancaster, CA, Channel 296D FM Minor Change**

**ENGINEERING STATEMENT**

All required protections are met by contour non-overlap pursuant to Section 74.1204, with the exception of protection to KLVE, Los Angeles, CA, 298B. KLVE is protected, as discussed below.

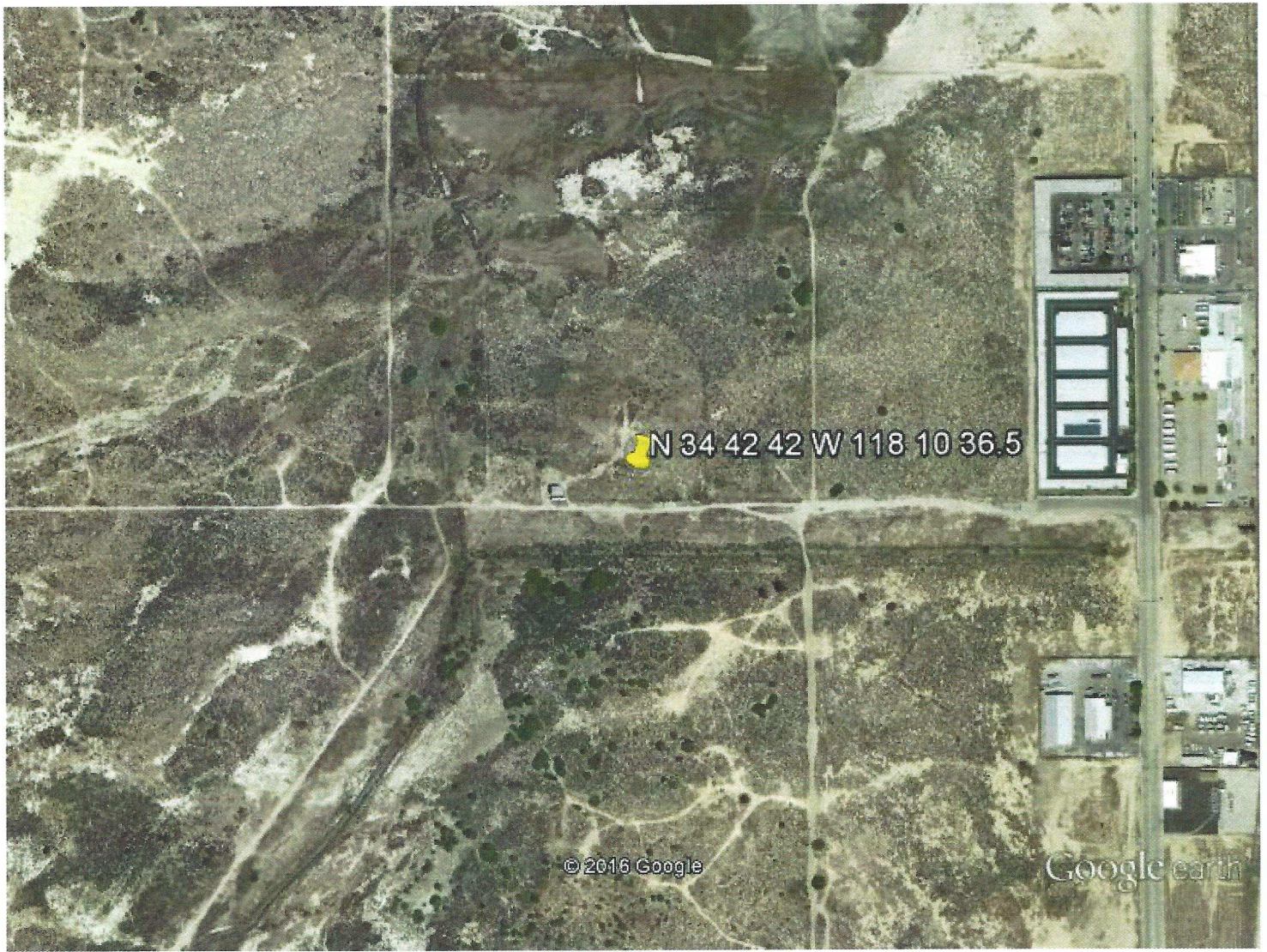
**PROTECTION TO KLVE**

KLVE 298B (54.5 kilometers at 169 degrees True from translator site) is a second adjacent-channel stations to the proposed channel 296 translator facility. The 54 dBu F50,50 service contour of KLVE extends well beyond the 296D transmitter site. Using the well-established *Living Way Ministries* Methodology, no actual interference to any population is predicted to exist to KLVE.

Note that a rule waiver of Section 74.1204 for this second and third adjacent-channel protection using the well-established *Living Way Ministries* Methodology is respectfully requested if such a rule waiver is deemed necessary for protection to any station.

The F50,50 signal strength from KLVE at the proposed 296D transmitter site is greater than 69 dBu (the "desired" signal). The second/third adjacent-channel protection is an undesired-to-desired ("U/D") dB signal strength ratio of 40:1. Therefore, predicted interference to KLVE is a 296D signal of greater than or equal to 109 dBu.

The 109 dBu signal based on a free space field determination is predicted to extend out to 250 meters from the proposed 296D transmitter site. As shown by the attached aerial photograph of the proposed site, *there is no population located within the 109 dBu interfering contour distance of 250 meters*. Therefore, pursuant to Section 74.1204(d) of the FCC Rules, KLVE is adequately protected by the proposed facility.



Google earth

