

**Technical Exhibit FCC Form 349
Gary L. Moss
Minor Modification
K256BW
Facility ID# 147224
.25 kW Horizontal and Vertical
Waco, TX**

Purpose Of Application

Gary L. Moss, the licensee of K256BW, proposes through this instant application to change channel to the mutually exclusive channel 257. The proposed site will be located at the same location, N31°32'15" W97°05'32" (NAD27) and will operate with .25 kW horizontal and vertical, at a height above average terrain of 85.8 m. The HAAT was calculated using the computer program V-Soft Probe 4, using 12 radials in compliance with the methodology of 47CFR 73.313. The antenna used for the instant proposed facility is a single bay EPA type 2 antenna. The proposed facility has 100% 60 dBu 50-50 contour overlap with the K256BW licensed facility. This translator will continue to be used as a fill in translator for KRZI (AM), Waco, TX, FID# 87179.

Interference To Other Facilities

This proposed facility complies with 47C.F.R. 74.1204 of the Commission's rules for interference to other facilities. There is no overlap of the proposed facility's interfering contours with the protected contours of any other full power facility with the exception of third adjacent WACO-FM Ch. 260C FID# 147224 Waco, TX. WACO-FM has a predicted contour of 85.04 dBu 50-50 at the proposed translator location. Based on the antenna used, the 125.04 dBu 50-10 contour never reaches ground level. See the attached tabulation. There is no overlap between the proposed facility and any other translator license or application. See the following pages for details.

Environmental

The proposed location is an existing 124 meter tower. The entire tower property site is fenced and has restricted access. The proposed antenna was studied using the OET FM model program. Using this program, and the EPA type 2 model, the power density at 2 meters above ground level was found to be .409 microwatts/cm², which occurs 100 meters from the base of the tower. This is .20% of the maximum level for the general population, uncontrolled exposure level, and exempts the facility from further study, as it is an insignificant contributor.

K256BW Modification to Ch 257

Gary L. Moss

REFERENCE
31 32 15.0 N.
97 05 32.0 W.

CH# 257D - 99.3 MHz, Pwr= 0.25 kW, HAAT= 85.8 M, COR= 225 M
Average Protected F(50-50)= 11.95 km
Omni-directional

DISPLAY DATES
DATA 01-12-18
SEARCH 01-12-18

CH CITY	CALL	TYPE ANT STATE	AZI <--	DIST FILE #	LAT LNG	PWR(kw) HAAT(M)	INT(km) COR(M)	PRO(km) LICENSEE	*IN* (Overlap in km)	*OUT*
260C Waco	WACO-FM	LIC NCN TX	223.0 42.9	30.36 BLH19901116KD	31 20 15.0 97 18 37.0	90.000 506	12.3 710	86.5 Capstar Tx, Llc	7.6	-57.3*
256D Waco	K256BW	LIC _C_ TX	0.0 0.0	0.00 BLFT20130814ACG	31 32 15.0 97 05 32.0	0.250 86	17.2 225	11.8 Gary L. Moss	-29.0*	-29.0*
258C Fort Worth	KPLX	LIC _CN TX	5.4 185.4	116.60 BMLH19850211KR	32 34 54.0 96 58 32.0	100.000 511	126.2 704	84.8 Kplx Lico, Inc.	-21.8*	13.9
257C3 Thorndale	KOKE-FM	LIC NCX TX	189.6 9.5	118.13 BLH20131030AID	30 29 23.3 97 17 56.0	24.000 100	114.7 254	40.4 Genuine Austin Radio, Lp	-8.8	36.1
256A Moody	NEW	CP ZCX TX	220.3 40.2	39.24 BNPH20151013AID	31 16 05.0 97 21 34.0	3.000 133	36.1 347	21.6 Waco Entertainment Group,	-4.3	2.2
257C1 Brownwood	KPSM	LIC NCX TX	276.8 95.8	183.21 BLH20021203ACT	31 43 10.0 99 00 57.0	100.000 136	158.2 589	61.0 Blm Of Brownwood, Inc.	13.5	84.0
254C Dallas	KLUV	LIC _CY TX	5.7 185.7	117.44 BLH19990216KA	32 35 19.0 96 58 05.0	100.000 507	12.3 698	84.3 Infinity Broadcasting, Llc	93.0	32.0
256C3 Fairfield	KNES	LIC _C_ TX	80.7 261.3	102.52 BLH20001222AAC	31 40 55.0 96 01 22.0	11.500 147	56.2 261	37.3 J & J Communications, Inc.	33.6	46.3

Terrain database is FCC NGDC 30 sec , R= 73.215 qualifying spacings or FCC minimum spacings in KM, M= Margin in KM
In & Out distances between contours are shown at closest points. Reference zone= West Zone, Co to 3rd adjacent.
All separation margins (if shown) include rounding.
Ant Column: (D= DA Standard, Z= DA 73.215, N= Not DA 73.215, _= Omni), Polarization (C,H,V,E), Beamtilt(Y,N,X)
"*"affixed to 'IN' or 'OUT' values = site inside restricted contour.

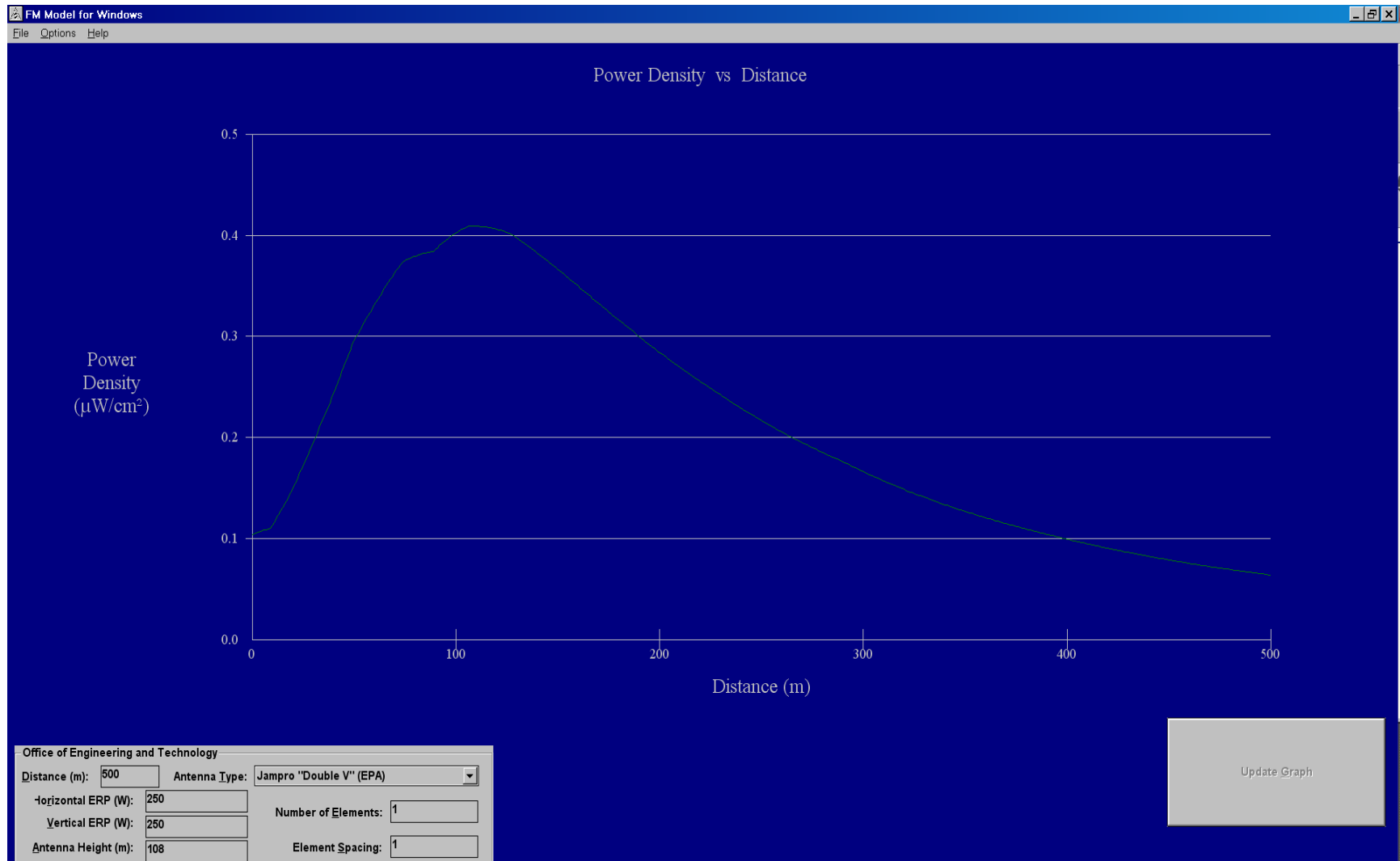
K256BW Waco, TX, Showing Protection to WACO-FM
 74.1204(d) Study - Using FCC 30 SEC Terrain Database
 Translator Maximum Licensed ERP = 0.25
 Translator Antenna Height AG = 108 Meters
 K256BW Antenna Model = SWRFMB_1

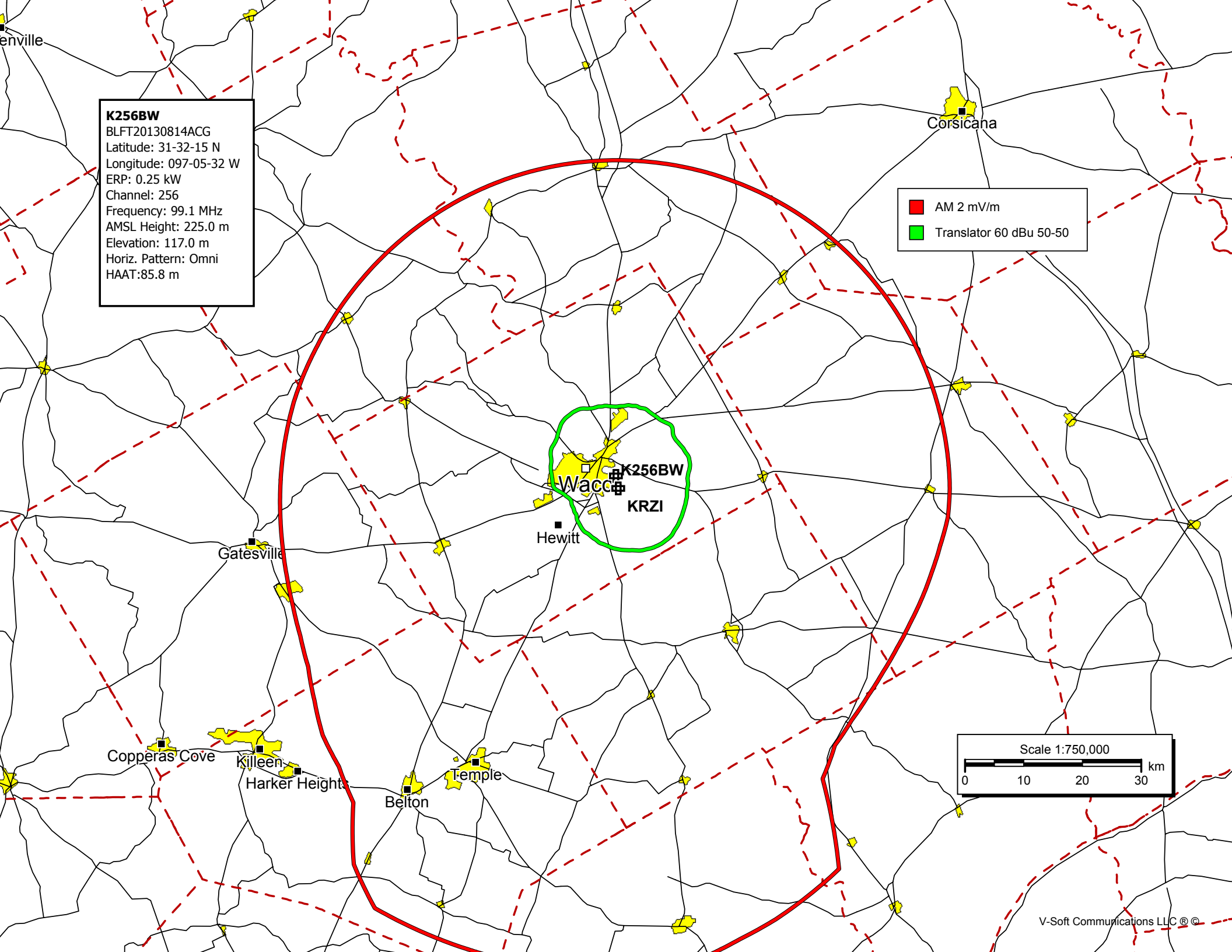
Protected Station's Contour = 85.04401 dBu
 Translator's full Interference contour 125.04401

Review Azimuth = 0 Degrees True
 Relative Field on the horizon at Review Azimuth = 1.000
 Translator ERP on the horizon at Review Azimuth = 0.25 kW
 Distance between stations = 30.4 km
 Protected Station= WACO-FM, 90 kW, 710 M Meters COR AMSL

Depression Angle From Horizon(Deg) (m)	Vertical Relative Field	Horizontal Relative Field	ERP (kw)	Dist to IX Contour Along Dep. Angle (m)	Dist to IX Contour From Tower Base (m)	Height IX Above Ground
00.00	1.0	1.0	0.2500	062.0540	062.0540	108.000
01.00	1.0	1.0	0.2500	062.0540	062.0445	106.917
02.00	0.999	1.0	0.2495	061.9919	061.9541	105.837
03.00	0.999	1.0	0.2495	061.9919	061.9069	104.756
04.00	0.998	1.0	0.2490	061.9299	061.7790	103.680
05.00	0.997	1.0	0.2485	061.8678	061.6324	102.608
06.00	0.995	1.0	0.2475	061.7437	061.4055	101.546
07.00	0.993	1.0	0.2465	061.6196	061.1603	100.490
08.00	0.991	1.0	0.2455	061.4955	060.8970	099.441
09.00	0.989	1.0	0.2445	061.3714	060.6158	098.399
10.00	0.986	1.0	0.2430	061.1852	060.2557	097.375
11.00	0.983	1.0	0.2416	060.9990	059.8783	096.361
12.00	0.98	1.0	0.2401	060.8129	059.4840	095.356
13.00	0.977	1.0	0.2386	060.6267	059.0729	094.362
14.00	0.973	1.0	0.2367	060.3785	058.5850	093.393
15.00	0.969	1.0	0.2347	060.1303	058.0814	092.437
16.00	0.965	1.0	0.2328	059.8821	057.5623	091.494
17.00	0.961	1.0	0.2309	059.6339	057.0281	090.565
18.00	0.956	1.0	0.2285	059.3236	056.4201	089.668
19.00	0.951	1.0	0.2261	059.0133	055.7982	088.787
20.00	0.946	1.0	0.2237	058.7030	055.1628	087.922
21.00	0.94	1.0	0.2209	058.3307	054.4564	087.096
22.00	0.934	1.0	0.2181	057.9584	053.7381	086.288
23.00	0.928	1.0	0.2153	057.5861	053.0083	085.499
24.00	0.922	1.0	0.2125	057.2138	052.2674	084.729
25.00	0.916	1.0	0.2098	056.8414	051.5158	083.978
26.00	0.909	1.0	0.2066	056.4070	050.6983	083.273
27.00	0.902	1.0	0.2034	055.9727	049.8720	082.589
28.00	0.895	1.0	0.2003	055.5383	049.0374	081.926
29.00	0.887	1.0	0.1967	055.0419	048.1407	081.315
30.00	0.879	1.0	0.1932	054.5454	047.2377	080.727
31.00	0.871	1.0	0.1897	054.0490	046.3290	080.163
32.00	0.863	1.0	0.1862	053.5526	045.4152	079.621
33.00	0.855	1.0	0.1828	053.0561	044.4966	079.104
34.00	0.846	1.0	0.1789	052.4977	043.5225	078.644
35.00	0.837	1.0	0.1751	051.9392	042.5461	078.209
36.00	0.828	1.0	0.1714	051.3807	041.5678	077.799
37.00	0.819	1.0	0.1677	050.8222	040.5884	077.414
38.00	0.809	1.0	0.1636	050.2017	039.5594	077.093
39.00	0.799	1.0	0.1596	049.5811	038.5318	076.798
40.00	0.789	1.0	0.1556	048.9606	037.5060	076.529
41.00	0.779	1.0	0.1517	048.3400	036.4827	076.286
42.00	0.769	1.0	0.1478	047.7195	035.4625	076.069

43.00	0.758	1.0	0.1436	047.0369	034.4006	075.921
44.00	0.747	1.0	0.1395	046.3543	033.3445	075.800
45.00	0.736	1.0	0.1354	045.6717	032.2948	075.705
46.00	0.725	1.0	0.1314	044.9891	031.2521	075.638
47.00	0.714	1.0	0.1274	044.3065	030.2170	075.596
48.00	0.702	1.0	0.1232	043.5619	029.1486	075.627
49.00	0.69	1.0	0.1190	042.8172	028.0906	075.685
50.00	0.679	1.0	0.1153	042.1346	027.0836	075.723
51.00	0.666	1.0	0.1109	041.3279	026.0085	075.882
52.00	0.654	1.0	0.1069	040.5833	024.9856	076.020
53.00	0.642	1.0	0.1030	039.8386	023.9755	076.183
54.00	0.629	1.0	0.0989	039.0319	022.9424	076.422
55.00	0.616	1.0	0.0949	038.2252	021.9251	076.688
56.00	0.603	1.0	0.0909	037.4185	020.9242	076.979
57.00	0.59	1.0	0.0870	036.6118	019.9402	077.295
58.00	0.577	1.0	0.0832	035.8051	018.9738	077.636
59.00	0.564	1.0	0.0795	034.9984	018.0255	078.000
60.00	0.55	1.0	0.0756	034.1297	017.0648	078.443
61.00	0.536	1.0	0.0718	033.2609	016.1252	078.909
62.00	0.523	1.0	0.0684	032.4542	015.2363	079.345
63.00	0.509	1.0	0.0648	031.5855	014.3395	079.857
64.00	0.495	1.0	0.0613	030.7167	013.4653	080.392
65.00	0.48	1.0	0.0576	029.7859	012.5881	081.005
66.00	0.466	1.0	0.0543	028.9171	011.7617	081.583
67.00	0.452	1.0	0.0511	028.0484	010.9594	082.181
68.00	0.437	1.0	0.0477	027.1176	010.1584	082.857
69.00	0.423	1.0	0.0447	026.2488	009.4067	083.495
70.00	0.408	1.0	0.0416	025.3180	008.6593	084.209
71.00	0.393	1.0	0.0386	024.3872	007.9397	084.941
72.00	0.378	1.0	0.0357	023.4564	007.2484	085.692
73.00	0.363	1.0	0.0329	022.5256	006.5858	086.459
74.00	0.348	1.0	0.0303	021.5948	005.9523	087.242
75.00	0.333	1.0	0.0277	020.6640	005.3482	088.040
76.00	0.318	1.0	0.0253	019.7332	004.7739	088.853
77.00	0.302	1.0	0.0228	018.7403	004.2156	089.740
78.00	0.287	1.0	0.0206	017.8095	003.7028	090.580
79.00	0.272	1.0	0.0185	016.8787	003.2206	091.431
80.00	0.241	1.0	0.0145	014.9550	002.5969	093.272
81.00	0.241	1.0	0.0145	014.9550	002.3395	093.229
82.00	0.225	1.0	0.0127	013.9621	001.9432	094.174
83.00	0.21	1.0	0.0110	013.0313	001.5881	095.066
84.00	0.194	1.0	0.0094	012.0385	001.2584	096.027
85.00	0.178	1.0	0.0079	011.0456	000.9627	096.996
86.00	0.163	1.0	0.0066	010.1148	000.7056	097.910
87.00	0.147	1.0	0.0054	009.1219	000.4774	098.891
88.00	0.131	1.0	0.0043	008.1291	000.2837	099.876
89.00	0.116	1.0	0.0034	007.1983	000.1256	100.803
90.00	0.1	1.0	0.0025	006.2054	000.0000	101.795





K256BW

BLFT20130814ACG
Latitude: 31-32-15 N
Longitude: 097-05-32 W
ERP: 0.25 kW
Channel: 256
Frequency: 99.1 MHz
AMSL Height: 225.0 m
Elevation: 117.0 m
Horiz. Pattern: Omni
HAAT:85.8 m

- AM 2 mV/m
- Translator 60 dBu 50-50

