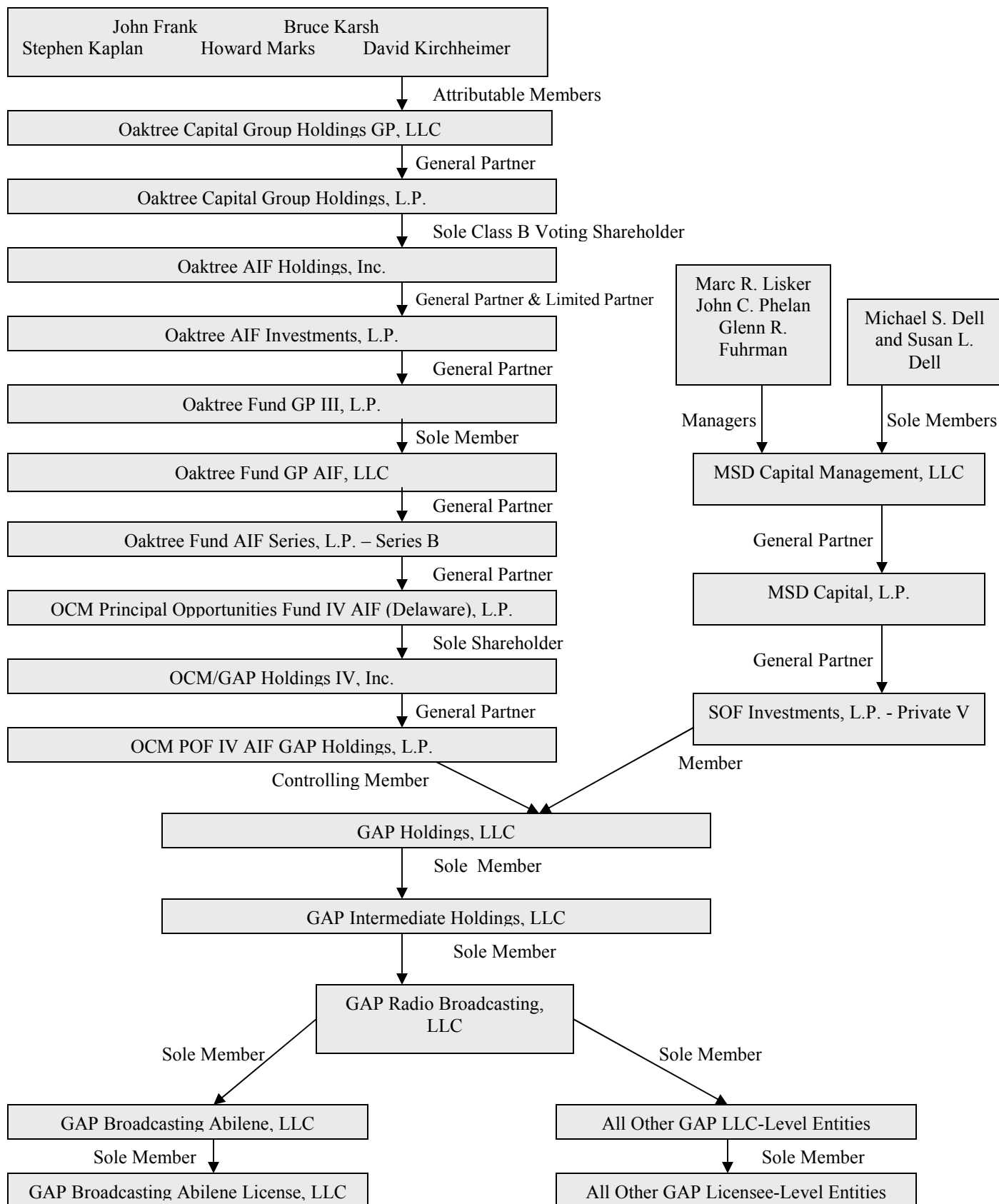


GAP CONTROL STRUCTURE AFTER PROPOSED TRANSACTION



OWNERSHIP INFORMATION AFTER PROPOSED TRANSACTION

All GAP Licensee-Level Entities

Name and Address	Citizenship	Positional Interest	Percentage Vote	Percentage of Total Assets (debt plus equity)
All GAP Licensee-Level Entities 12900 Preston Road, Suite 525 Dallas, Texas 75230	Delaware Limited Liability Companies	--	--	--
All GAP LLC-Level Entities ¹ 12900 Preston Road, Suite 525 Dallas, Texas 75230	Delaware Limited Liability Companies	Sole Member	100%	100%
George Laughlin 12900 Preston Road, Suite 525 Dallas, Texas 75230	US	Co-President	0%	0%
Erik Helling 4300 North Miller Road, Suite 116 Scottsdale, AZ 85251	US	Co-President	0%	0%
Daniel Wilson 12900 Preston Road, Suite 525 Dallas, Texas 75230	US	Chief Financial Officer, Secretary and Treasurer	0%	0%
Shawn Nunn 12900 Preston Road, Suite 525 Dallas, Texas 75230	US	Vice President, Sales	0%	0%
Bob Freeman 12900 Preston Road, Suite 525 Dallas, Texas 75230	US	Vice President, Sales	0%	0%
Norman Philips 12900 Preston Road, Suite 525 Dallas, Texas 75230	US	Vice President, Engineering	0%	0%
B. James Ford c/o Oaktree Capital Management, L.P. 333 South Grand Avenue, 28 th Floor Los Angeles, CA 90071	US	Manager	0%	0%
Andrew Salter c/o Oaktree Capital Management, L.P. 333 South Grand Avenue, 28 th Floor Los Angeles, CA 90071	US	Manager	0%	0%

¹ Each GAP LLC-Level Entity (as defined in the Description of Proposed Transaction attached hereto) is the sole member of the GAP Licensee-Level Entity that shares the same city name.

FCC Form 316
Exhibit 10

Name and Address	Citizenship	Positional Interest	Percentage Vote	Percentage of Total Assets (debt plus equity)
David Quick c/o Oaktree Capital Management, L.P. 333 South Grand Avenue, 28 th Floor Los Angeles, CA 90071	US	Manager	0%	0%
Robert Platek c/o MSD Capital, L.P. 645 Fifth Avenue, 21 st Floor New York, NY 10022	US	Manager	0%	0%
Matthew Olim c/o MSD Capital, L.P. 645 Fifth Avenue, 21 st Floor New York, NY 10022	US	Manager	0%	0%

All GAP LLC-Level Entities

Name and Address	Citizenship	Positional Interest	Percentage Vote	Percentage of Total Assets (debt plus equity)
All GAP LLC-Level Entities 12900 Preston Road, Suite 525 Dallas, Texas 75230	Delaware Limited Liability Companies	--	--	--
GAP Radio Broadcasting, LLC 12900 Preston Road, Suite 525 Dallas, Texas 75230	Delaware Limited Liability Company	Sole Member	100%	100%
George Laughlin 12900 Preston Road, Suite 525 Dallas, Texas 75230	US	Co-President	0%	0%
Erik Hellum 4300 North Miller Road, Suite 116 Scottsdale, AZ 85251	US	Co-President	0%	0%
Daniel Wilson 12900 Preston Road, Suite 525 Dallas, Texas 75230	US	Chief Financial Officer, Secretary and Treasurer	0%	0%
Shawn Nunn 12900 Preston Road, Suite 525 Dallas, Texas 75230	US	Vice President, Sales	0%	0%
Bob Freeman 12900 Preston Road, Suite 525 Dallas, Texas 75230	US	Vice President, Sales	0%	0%
Norman Philips 12900 Preston Road, Suite 525 Dallas, Texas 75230	US	Vice President, Engineering	0%	0%
B. James Ford c/o Oaktree Capital Management, L.P. 333 South Grand Avenue, 28 th Floor Los Angeles, CA 90071	US	Manager	0%	0%
Andrew Salter c/o Oaktree Capital Management, L.P. 333 South Grand Avenue, 28 th Floor Los Angeles, CA 90071	US	Manager	0%	0%
David Quick c/o Oaktree Capital Management, L.P. 333 South Grand Avenue, 28 th Floor Los Angeles, CA 90071	US	Manager	0%	0%
Robert Platek c/o MSD Capital, L.P. 645 Fifth Avenue, 21 st Floor New York, NY 10022	US	Manager	0%	0%

FCC Form 316
Exhibit 10

Name and Address	Citizenship	Positional Interest	Percentage Vote	Percentage of Total Assets (debt plus equity)
Matthew Olim c/o MSD Capital, L.P. 645 Fifth Avenue, 21 st Floor New York, NY 10022	US	Manager	0%	0%

GAP Radio Broadcasting, LLC

Name and Address	Citizenship	Positional Interest	Percentage Vote	Percentage of Total Assets (debt plus equity)
GAP Radio Broadcasting, LLC 12900 Preston Road, Suite 525 Dallas, Texas 75230	Delaware Limited Liability Company	--	--	--
GAP Intermediate Holdings, LLC c/o Oaktree Capital Management, L.P. 333 South Grand Avenue, 28 th Floor Los Angeles, CA 90071	Delaware Limited Liability Company	Sole Member	100%	37.5%
George Laughlin 12900 Preston Road, Suite 525 Dallas, Texas 75230	US	Co-President	0%	0%
Erik Hellum 4300 North Miller Road, Suite 116 Scottsdale, AZ 85251	US	Co-President	0%	0%
Daniel Wilson 12900 Preston Road, Suite 525 Dallas, Texas 75230	US	Chief Financial Officer, Secretary and Treasurer	0%	0%
Shawn Nunn 12900 Preston Road, Suite 525 Dallas, Texas 75230	US	Vice President, Sales	0%	0%
Bob Freeman 12900 Preston Road, Suite 525 Dallas, Texas 75230	US	Vice President, Sales	0%	0%
Norman Philips 12900 Preston Road, Suite 525 Dallas, Texas 75230	US	Vice President, Engineering	0%	0%
B. James Ford c/o Oaktree Capital Management, L.P. 333 South Grand Avenue, 28 th Floor Los Angeles, CA 90071	US	Manager	0%	0%
Andrew Salter c/o Oaktree Capital Management, L.P. 333 South Grand Avenue, 28 th Floor Los Angeles, CA 90071	US	Manager	0%	0%
David Quick c/o Oaktree Capital Management, L.P. 333 South Grand Avenue, 28 th Floor Los Angeles, CA 90071	US	Manager	0%	0%
Robert Platek c/o MSD Capital, L.P. 645 Fifth Avenue, 21 st Floor New York, NY 10022	US	Manager	0%	0%

FCC Form 316
Exhibit 10

Name and Address	Citizenship	Positional Interest	Percentage Vote	Percentage of Total Assets (debt plus equity)
Matthew Olim c/o MSD Capital, L.P. 645 Fifth Avenue, 21 st Floor New York, NY 10022	US	Manager	0%	0%

GAP Intermediate Holdings, LLC

Name and Address	Citizenship	Positional Interest	Percentage Vote	Percentage of Total Assets (debt plus equity)
GAP Intermediate Holdings, LLC c/o Oaktree Capital Management, L.P. 333 South Grand Avenue, 28th Floor Los Angeles, CA 90071	Delaware Limited Liability Company	--	--	--
GAP Holdings, LLC c/o Oaktree Capital Management, L.P. 333 South Grand Avenue, 28 th Floor Los Angeles, CA 90071	Delaware Limited Liability Company	Sole Member	100%	100%
George Laughlin 12900 Preston Road, Suite 525 Dallas, Texas 75230	US	Co-President	0%	0%
Erik Helling 4300 North Miller Road, Suite 116 Scottsdale, AZ 85251	US	Co-President	0%	0%
Daniel Wilson 12900 Preston Road, Suite 525 Dallas, Texas 75230	US	Chief Financial Officer, Secretary and Treasurer	0%	0%
Shawn Nunn 12900 Preston Road, Suite 525 Dallas, Texas 75230	US	Vice President, Sales	0%	0%
Bob Freeman 12900 Preston Road, Suite 525 Dallas, Texas 75230	US	Vice President, Sales	0%	0%
Norman Philips 12900 Preston Road, Suite 525 Dallas, Texas 75230	US	Vice President, Engineering	0%	0%
B. James Ford c/o Oaktree Capital Management, L.P. 333 South Grand Avenue, 28 th Floor Los Angeles, CA 90071	US	Manager	0%	0%
Andrew Salter c/o Oaktree Capital Management, L.P. 333 South Grand Avenue, 28 th Floor Los Angeles, CA 90071	US	Manager	0%	0%
David Quick c/o Oaktree Capital Management, L.P. 333 South Grand Avenue, 28 th Floor Los Angeles, CA 90071	US	Manager	0%	0%
Robert Platek c/o MSD Capital, L.P. 645 Fifth Avenue, 21 st Floor New York, NY 10022	US	Manager	0%	0%

FCC Form 316
Exhibit 10

Name and Address	Citizenship	Positional Interest	Percentage Vote	Percentage of Total Assets (debt plus equity)
Matthew Olim c/o MSD Capital, L.P. 645 Fifth Avenue, 21 st Floor New York, NY 10022	US	Manager	0%	0%

GAP Holdings, LLC

Name and Address	Citizenship	Positional Interest	Percentage Vote	Percentage of Total Assets (debt plus equity)
GAP Holdings, LLC c/o Oaktree Capital Management, L.P. 333 South Grand Avenue, 28th Floor Los Angeles, CA 90071	Delaware Limited Liability Company	--	--	--
OCM POF IV AIF GAP Holdings, L.P. c/o Oaktree Capital Management, L.P. 333 South Grand Avenue, 28 th Floor Los Angeles, CA 90071	Delaware Limited Partnership	Controlling Member	60%	50%
SOF Investments, L.P. – Private V 645 Fifth Avenue, 21 st Floor New York, NY 10022	Delaware Limited Partnership	Member	40%	50%
George Laughlin 12900 Preston Road, Suite 525 Dallas, Texas 75230	US	Co-President	0%	0%
Erik Hellum 4300 North Miller Road, Suite 116 Scottsdale, AZ 85251	US	Co-President	0%	0%
Dan Wilson 12900 Preston Road, Suite 525 Dallas, Texas 75230	US	Chief Financial Officer, Secretary and Treasurer	0%	0%
Shawn Nunn 12900 Preston Road, Suite 525 Dallas, Texas 75230	US	Vice President, Sales	0%	0%
Bob Freeman 12900 Preston Road, Suite 525 Dallas, Texas 75230	US	Vice President, Sales	0%	0%
Norman Philips 12900 Preston Road, Suite 525 Dallas, Texas 75230	US	Vice President, Engineering	0%	0%
B. James Ford c/o Oaktree Capital Management, L.P. 333 South Grand Avenue, 28 th Floor Los Angeles, CA 90071	US	Manager	0%	0%
Andrew Salter c/o Oaktree Capital Management, L.P. 333 South Grand Avenue, 28 th Floor Los Angeles, CA 90071	US	Manager	0%	0%
David Quick c/o Oaktree Capital Management, L.P. 333 South Grand Avenue, 28 th Floor Los Angeles, CA 90071	US	Manager	0%	0%

FCC Form 316
Exhibit 10

Name and Address	Citizenship	Positional Interest	Percentage Vote	Percentage of Total Assets (debt plus equity)
Robert Platek c/o MSD Capital, L.P. 645 Fifth Avenue, 21 st Floor New York, NY 10022	US	Manager	0%	0%
Matthew Olim c/o MSD Capital, L.P. 645 Fifth Avenue, 21 st Floor New York, NY 10022	US	Manager	0%	0%

OCM POF IV AIF GAP Holdings, L.P.

[A description of the ownership structure of SOF Investments, L.P. – Private V begins on page 21.]

Name and Address	Citizenship	Positional Interest	Percentage Vote	Percentage of Total Assets (debt plus equity)
OCM POF IV AIF GAP Holdings, L.P. c/o Oaktree Capital Management, L.P. 333 South Grand Avenue, 28th Floor Los Angeles, CA 90071	Delaware Limited Partnership	--	--	--
OCM/GAP Holdings IV, Inc. c/o Oaktree Capital Management, L.P. 333 South Grand Avenue, 28 th Floor Los Angeles, CA 90071	Delaware Corporation	General Partner	100%	41.4137%
OCM Principal Opportunities Fund IV AIF (Delaware), L.P. c/o Oaktree Capital Management, L.P. 333 South Grand Avenue, 28 th Floor Los Angeles, CA 90071	Delaware Limited Partnership	Limited Partner	0%	58.5863%

OCM/GAP Holdings IV, Inc.

Name and Address	Citizenship	Positional Interest	Percentage Vote	Percentage of Total Assets (debt plus equity)
OCM/GAP Holdings IV, Inc. c/o Oaktree Capital Management, L.P. 333 South Grand Avenue, 28th Floor Los Angeles, CA 90071	Delaware Corporation	--	--	--
OCM Principal Opportunities Fund IV AIF (Delaware), L.P. c/o Oaktree Capital Management, L.P. 333 South Grand Avenue, 28 th Floor Los Angeles, CA 90071	Delaware Limited Partnership	Sole Shareholder	100%	100%
Andrew Salter c/o Oaktree Capital Management, L.P. 333 South Grand Avenue, 28 th Floor Los Angeles, CA 90071	US	President, Secretary and Director	0%	0%
B. James Ford c/o Oaktree Capital Management, L.P. 333 South Grand Avenue, 28 th Floor Los Angeles, CA 90071	US	Director	0%	0%
David Quick c/o Oaktree Capital Management, L.P. 333 South Grand Avenue, 28 th Floor Los Angeles, CA 90071	US	Director	0%	0%

OCM Principal Opportunities Fund IV AIF (Delaware), L.P.

Name and Address	Citizenship	Positional Interest	Percentage Vote	Percentage of Total Assets (debt plus equity)
OCM Principal Opportunities Fund IV AIF (Delaware), L.P. c/o Oaktree Capital Management, L.P. 333 South Grand Avenue, 28th Floor Los Angeles, CA 90071	Delaware Limited Partnership	---	---	---
Oaktree Fund AIF Series, L.P. – Series B c/o Oaktree Capital Management, L.P. 333 South Grand Avenue, 28 th Floor Los Angeles, CA 90071	Delaware Limited Partnership	General Partner	100%	2%

Oaktree Fund AIF Series, L.P. – Series B

Name and Address	Citizenship	Positional Interest	Percentage Vote	Percentage of Total Assets (debt plus equity)
Oaktree Fund AIF Series, L.P. c/o Oaktree Capital Management, L.P. 333 South Grand Avenue, 28th Floor Los Angeles, CA 90071	Delaware Limited Partnership	---	---	---
Oaktree Fund GP AIF, LLC c/o Oaktree Capital Management, L.P. 333 South Grand Avenue, 28 th Floor Los Angeles, CA 90071	Delaware Limited Liability Company	General Partner	100%	0%
Oaktree Fund GP III, L.P. c/o Oaktree Capital Management, L.P. 333 South Grand Avenue, 28 th Floor Los Angeles, CA 90071	Delaware Limited Partnership	Limited Partner	0%	100%

Oaktree Fund GP AIF, LLC

Name and Address	Citizenship	Positional Interest	Percentage Vote	Percentage of Total Assets (debt plus equity)
Oaktree Fund GP AIF, LLC c/o Oaktree Capital Management, L.P. 333 South Grand Avenue, 28th Floor Los Angeles, CA 90071	Delaware Limited Liability Company	---	---	---
Oaktree Fund GP III, L.P. c/o Oaktree Capital Management, L.P. 333 South Grand Avenue, 28 th Floor Los Angeles, CA 90071	Delaware Limited Partnership	Sole Member	100%	100%
Todd Molz c/o Oaktree Capital Management, L.P. 333 South Grand Avenue, 28 th Floor Los Angeles, CA 90071	U.S.	Secretary	0%	0%

Oaktree Fund GP III, L.P.

Name and Address	Citizenship	Positional Interest	Percentage Vote	Percentage of Total Assets (debt plus equity)
Oaktree Fund GP III, L.P. c/o Oaktree Capital Management, L.P. 333 South Grand Avenue, 28th Floor Los Angeles, CA 90071	Delaware Limited Partnership	---	---	---
Oaktree AIF Investments, L.P. c/o Oaktree Capital Management, L.P. 333 South Grand Avenue, 28 th Floor Los Angeles, CA 90071	Delaware Limited Partnership	General Partner	100%	50-65%*

*Oaktree AIF Investments, L.P. has an ownership interest in Oaktree Fund GP III, L.P. as a general partner, and certain investment professionals who are employees of Oaktree have an ownership interest as limited partners. These investment professionals receive their incentive compensation in the underlying investment funds through Oaktree Fund GP III, L.P., and the percentage of assets and equity attributable to the investment professionals (and, correspondingly, to Oaktree AIF Investments, L.P., the general partner) vary as new funds are added underneath and old funds liquidate. Moreover, different investment professionals have interests that are separated into different series designations, making a single percentage difficult to calculate. Accordingly, the data set forth in the table above is provided as a range.

Oaktree AIF Investments, L.P.

Name and Address	Citizenship	Positional Interest	Percentage Vote	Percentage of Total Assets (debt plus equity)
Oaktree AIF Investments, L.P. c/o Oaktree Capital Management, L.P. 333 South Grand Avenue, 28th Floor Los Angeles, CA 90071	Delaware Limited Partnership	---	---	---
Oaktree AIF Holdings, Inc. c/o Oaktree Capital Management, L.P. 333 South Grand Avenue, 28 th Floor Los Angeles, CA 90071	Delaware Corporation	General Partner and Limited Partner	100%	15.31%
Oaktree Capital Group Holdings, L.P. c/o Oaktree Capital Management, L.P. 333 South Grand Avenue, 28 th Floor Los Angeles, CA 90071	Delaware Limited Partnership	Limited Partner	0%	84.69%
Howard Marks c/o Oaktree Capital Management, L.P. 333 South Grand Avenue, 28 th Floor Los Angeles, CA 90071	U.S.	Chairman	0%	0%
Bruce Karsh c/o Oaktree Capital Management, L.P. 333 South Grand Avenue, 28 th Floor Los Angeles, CA 90071	U.S.	President	0%	0%
John Frank c/o Oaktree Capital Management, L.P. 333 South Grand Avenue, 28 th Floor Los Angeles, CA 90071	U.S.	Managing Principal	0%	0%
David Kirchheimer c/o Oaktree Capital Management, L.P. 333 South Grand Avenue, 28 th Floor Los Angeles, CA 90071	U.S.	Chief Financial Officer	0%	0%
Todd Molz c/o Oaktree Capital Management, L.P. 333 South Grand Avenue, 28 th Floor Los Angeles, CA 90071	U.S.	General Counsel and Secretary	0%	0%
Richard Ting c/o Oaktree Capital Management, L.P. 333 South Grand Avenue, 28 th Floor Los Angeles, CA 90071	U.S.	Associate General Counsel and Assistant Secretary	0%	0%
Lisa Arakaki c/o Oaktree Capital Management, L.P. 333 South Grand Avenue, 28 th Floor Los Angeles, CA 90071	U.S.	Senior Vice President and Assistant Secretary	0%	0%

FCC Form 316
Exhibit 10

Name and Address	Citizenship	Positional Interest	Percentage Vote	Percentage of Total Assets (debt plus equity)
Emily Alexander c/o Oaktree Capital Management, L.P. 333 South Grand Avenue, 28 th Floor Los Angeles, CA 90071	U.S.	Senior Vice President and Assistant Secretary	0%	0%
Martin Boskovich c/o Oaktree Capital Management, L.P. 333 South Grand Avenue, 28 th Floor Los Angeles, CA 90071	U.S.	Vice President and Assistant Secretary	0%	0%
Shawn Haghighi c/o Oaktree Capital Management, L.P. 333 South Grand Avenue, 28 th Floor Los Angeles, CA 90071	U.S.	Vice President and Assistant Secretary	0%	0%

Oaktree AIF Holdings, Inc.

Name and Address	Citizenship	Positional Interest	Percentage Vote	Percentage of Total Assets (debt plus equity)
Oaktree AIF Holdings, Inc. c/o Oaktree Capital Management, L.P. 333 South Grand Avenue, 28th Floor Los Angeles, CA 90071	Delaware Corporation	---	---	---
Oaktree Capital Group Holdings, L.P. c/o Oaktree Capital Management, L.P. 333 South Grand Avenue, 28 th Floor Los Angeles, CA 90071	Delaware Limited Partnership	Sole Voting Shareholder	100%	0%
Howard Marks c/o Oaktree Capital Management, L.P. 333 South Grand Avenue, 28 th Floor Los Angeles, CA 90071	U.S.	Co-President	0%	0%
Bruce Karsh c/o Oaktree Capital Management, L.P. 333 South Grand Avenue, 28 th Floor Los Angeles, CA 90071	U.S.	Co-President	0%	0%
Todd Molz c/o Oaktree Capital Management, L.P. 333 South Grand Avenue, 28 th Floor Los Angeles, CA 90071	U.S.	Vice President, Secretary and Sole Director	0%	0%
John Edwards c/o Oaktree Capital Management, L.P. 333 South Grand Avenue, 28 th Floor Los Angeles, CA 90071	U.S.	Vice President and Treasurer	0%	0%
Richard Ting c/o Oaktree Capital Management, L.P. 333 South Grand Avenue, 28 th Floor Los Angeles, CA 90071	U.S.	Vice President and Assistant Secretary	0%	0%
Lisa Arakaki c/o Oaktree Capital Management, L.P. 333 South Grand Avenue, 28 th Floor Los Angeles, CA 90071	U.S.	Vice President and Assistant Secretary	0%	0%
Jeff Arnold c/o Oaktree Capital Management, L.P. 333 South Grand Avenue, 28 th Floor Los Angeles, CA 90071	U.S.	Vice President and Assistant Secretary	0%	0%
Emily Alexander c/o Oaktree Capital Management, L.P. 333 South Grand Avenue, 28 th Floor Los Angeles, CA 90071	U.S.	Vice President and Assistant Secretary	0%	0%

FCC Form 316
Exhibit 10

Name and Address	Citizenship	Positional Interest	Percentage Vote	Percentage of Total Assets (debt plus equity)
Martin Boskovich c/o Oaktree Capital Management, L.P. 333 South Grand Avenue, 28 th Floor Los Angeles, CA 90071	U.S.	Vice President and Assistant Secretary	0%	0%
Shawn Haghighi c/o Oaktree Capital Management, L.P. 333 South Grand Avenue, 28 th Floor Los Angeles, CA 90071	U.S.	Vice President and Assistant Secretary	0%	0%

Oaktree Capital Group Holdings, L.P.

Name and Address	Citizenship	Positional Interest	Percentage Vote	Percentage of Total Assets (debt plus equity)
Oaktree Capital Group Holdings, L.P. c/o Oaktree Capital Management, L.P. 333 South Grand Avenue, 28th Floor Los Angeles, CA 90071	Delaware Limited Partnership	---	---	---
Oaktree Capital Group Holdings GP, LLC c/o Oaktree Capital Management, L.P. 333 South Grand Avenue, 28 th Floor Los Angeles, CA 90071	Delaware Limited Liability Company	General Partner	100%	0%
John Frank c/o Oaktree Capital Management, L.P. 333 South Grand Avenue, 28 th Floor Los Angeles, CA 90071	U.S.	Limited Partner	0%	<1%
Stephen Kaplan c/o Oaktree Capital Management, L.P. 333 South Grand Avenue, 28 th Floor Los Angeles, CA 90071	U.S.	Limited Partner	0%	<1%
Bruce Karsh c/o Oaktree Capital Management, L.P. 333 South Grand Avenue, 28 th Floor Los Angeles, CA 90071	U.S.	Limited Partner	0%	<1%
David Kirchheimer c/o Oaktree Capital Management, L.P. 333 South Grand Avenue, 28 th Floor Los Angeles, CA 90071	U.S.	Limited Partner	0%	<1%
Howard Marks c/o Oaktree Capital Management, L.P. 333 South Grand Avenue, 28 th Floor Los Angeles, CA 90071	U.S.	Limited Partner	0%	<1%
Kenneth Liang c/o Oaktree Capital Management, L.P. 333 South Grand Avenue, 28 th Floor Los Angeles, CA 90071	U.S.	Limited Partner	0%	<1%

Oaktree Capital Group Holdings GP, LLC**

Name and Address	Citizenship	Positional Interest	Percentage Vote	Percentage of Total Assets (debt plus equity)
Oaktree Capital Group Holdings GP, LLC c/o Oaktree Capital Management, L.P. 333 South Grand Avenue, 28th Floor Los Angeles, CA 90071	Delaware Limited Liability Company	---	---	---
Howard Marks c/o Oaktree Capital Management, L.P. 333 South Grand Avenue, 28 th Floor Los Angeles, CA 90071	U.S.	Member, Manager and Chairman	20%	0%
Bruce Karsh c/o Oaktree Capital Management, L.P. 333 South Grand Avenue, 28 th Floor Los Angeles, CA 90071	U.S.	Member, Manager and President	20%	0%
John Frank c/o Oaktree Capital Management, L.P. 333 South Grand Avenue, 28 th Floor Los Angeles, CA 90071	U.S.	Member, Manager and Managing Principal	20%	0%
David Kirchheimer c/o Oaktree Capital Management, L.P. 333 South Grand Avenue, 28 th Floor Los Angeles, CA 90071	U.S.	Member, Manager, Chief Financial Officer and Chief Administrative Officer	20%	0%
Stephen Kaplan c/o Oaktree Capital Management, L.P. 333 South Grand Avenue, 28 th Floor Los Angeles, CA 90071	U.S.	Member, Manager and Principal	20%	0%
Todd Molz c/o Oaktree Capital Management, L.P. 333 South Grand Avenue, 28 th Floor Los Angeles, CA 90071	U.S.	Managing Director and General Counsel	0%	0%

** Oaktree Capital Group Holdings GP, LLC (“Oaktree GP LLC”) has voting and non-voting members. The operating agreement of Oaktree GP LLC includes the Commission’s insulating language with respect to the non-voting members and with respect to certain voting members for media matters. The operating agreement establishes a Media Company Committee comprised of the voting members listed above. Each member of the Media Company Committee has an equal one-fifth (1/5) vote. Voting members of Oaktree GP LLC who do not serve on the Media Company Committee are considered insulated members for purposes of any media investment. In addition, notwithstanding any other provision of the operating agreement, these insulated voting members may not vote for the removal of any member of the Media Company Committee except as expressly permitted under the Commission’s insulated member requirements. For the purposes of non-media related investments, all voting members of Oaktree GP LLC are permitted to vote with the percentage of all such members’ voting rights governed by Oaktree GP LLC’s operating agreement.

Because Oaktree GP LLC does not hold any equity interest in Oaktree Capital Group Holdings, L.P., each member does not hold any indirect equity interest in the GAP entities through Oaktree GP LLC.

SOF Investments, L.P. – Private V***

Name and Address	Citizenship	Positional Interest	Percentage Vote	Percentage of Total Assets (debt plus equity)
SOF Investments, L.P. – Private V c/o MSD Capital, L.P. 645 Fifth Avenue, 21st Floor New York, NY 10022	Delaware Limited Partnership	---	---	---
MSD Capital, L.P. 645 Fifth Avenue, 21 st Floor New York, NY 10022	Delaware Limited Partnership	General Partner	100%	0.1%

***The limited partners holding 99.9% of the equity interests of SOF Investments, L.P. – Private V are entities created for the benefit of members of the family of Mr. Michael S. Dell and certain employees of MSD Capital, L.P.

MSD Capital, L.P.

Name and Address	Citizenship	Positional Interest	Percentage Vote	Percentage of Total Assets (debt plus equity)
MSD Capital, L.P. 645 Fifth Avenue, 21st Floor New York, NY 10022	Delaware Limited Partnership	---	---	---
MSD Capital Management, LLC c/o MSD Capital, L.P. 645 Fifth Avenue, 21 st Floor New York, NY 10022	Delaware Limited Liability Company	General Partner	100%	0.01%
Michael S. Dell and Susan L. Dell c/o MSD Capital, L.P. 645 Fifth Avenue, 21 st Floor New York, NY 10022	U.S.	Limited Partners	0%	99.9%

MSD Capital Management, LLC

Name and Address	Citizenship	Positional Interest	Percentage Vote	Percentage of Total Assets (debt plus equity)
MSD Capital Management, LLC c/o MSD Capital, L.P. 645 Fifth Avenue, 21st Floor New York, NY 10022	Delaware Limited Liability Company	---	---	---
Michael S. Dell and Susan L. Dell c/o MSD Capital, L.P. 645 Fifth Avenue, 21 st Floor New York, NY 10022	U.S.	Sole Members	0%	100%
Marc R. Lisker c/o MSD Capital, L.P. 645 Fifth Avenue, 21 st Floor New York, NY 10022	U.S.	Manager	Shared Control ²	0%
John C. Phelan c/o MSD Capital, L.P. 645 Fifth Avenue, 21 st Floor New York, NY 10022	U.S.	Manager	Shared Control	0%
Glenn R. Fuhrman c/o MSD Capital, L.P. 645 Fifth Avenue, 21 st Floor New York, NY 10022	U.S.	Manager	Shared Control	0%

² The three managers of MSD Capital Management, LLC share control, in that any one manager may individually make decisions which bind the company.