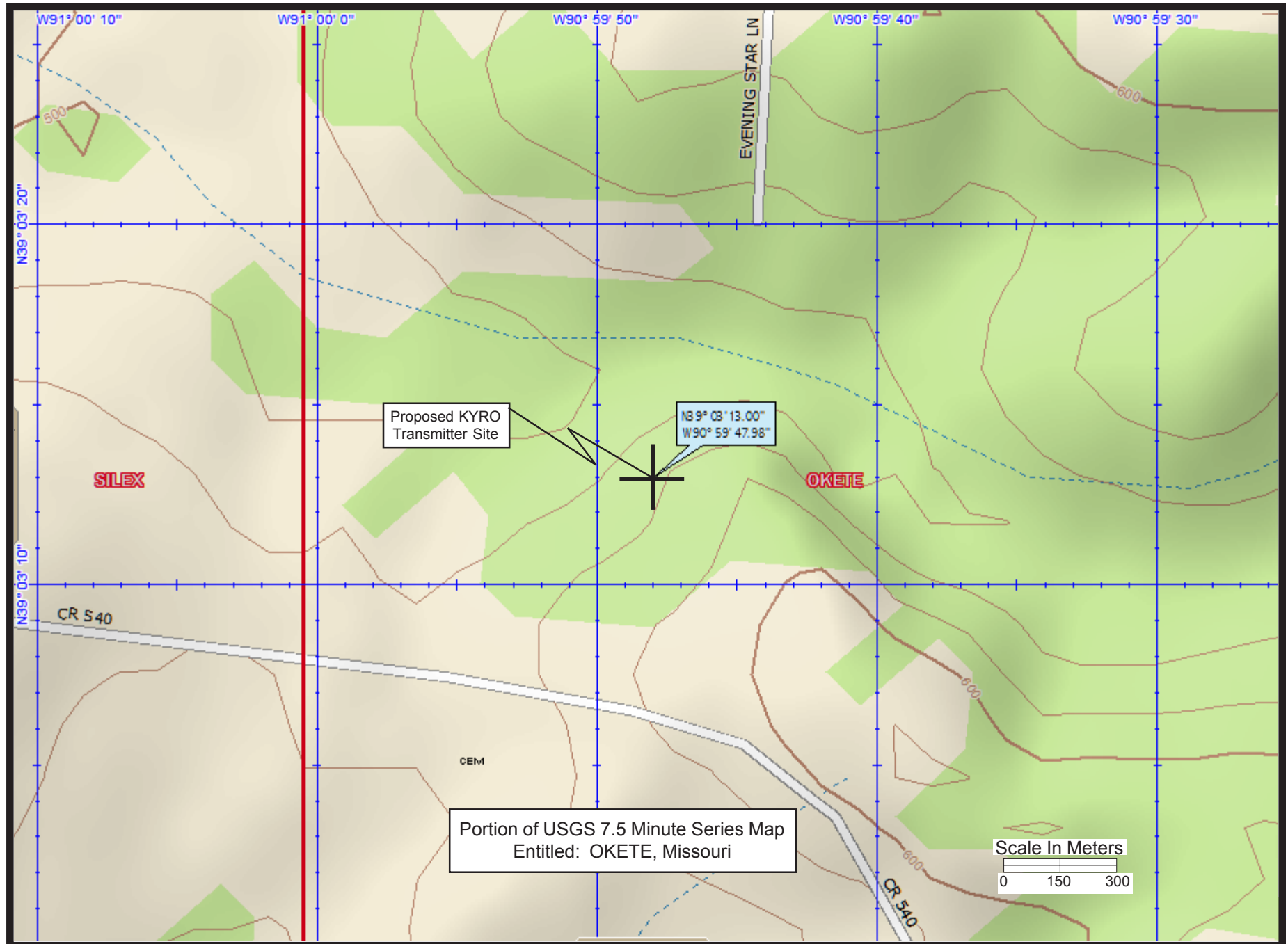
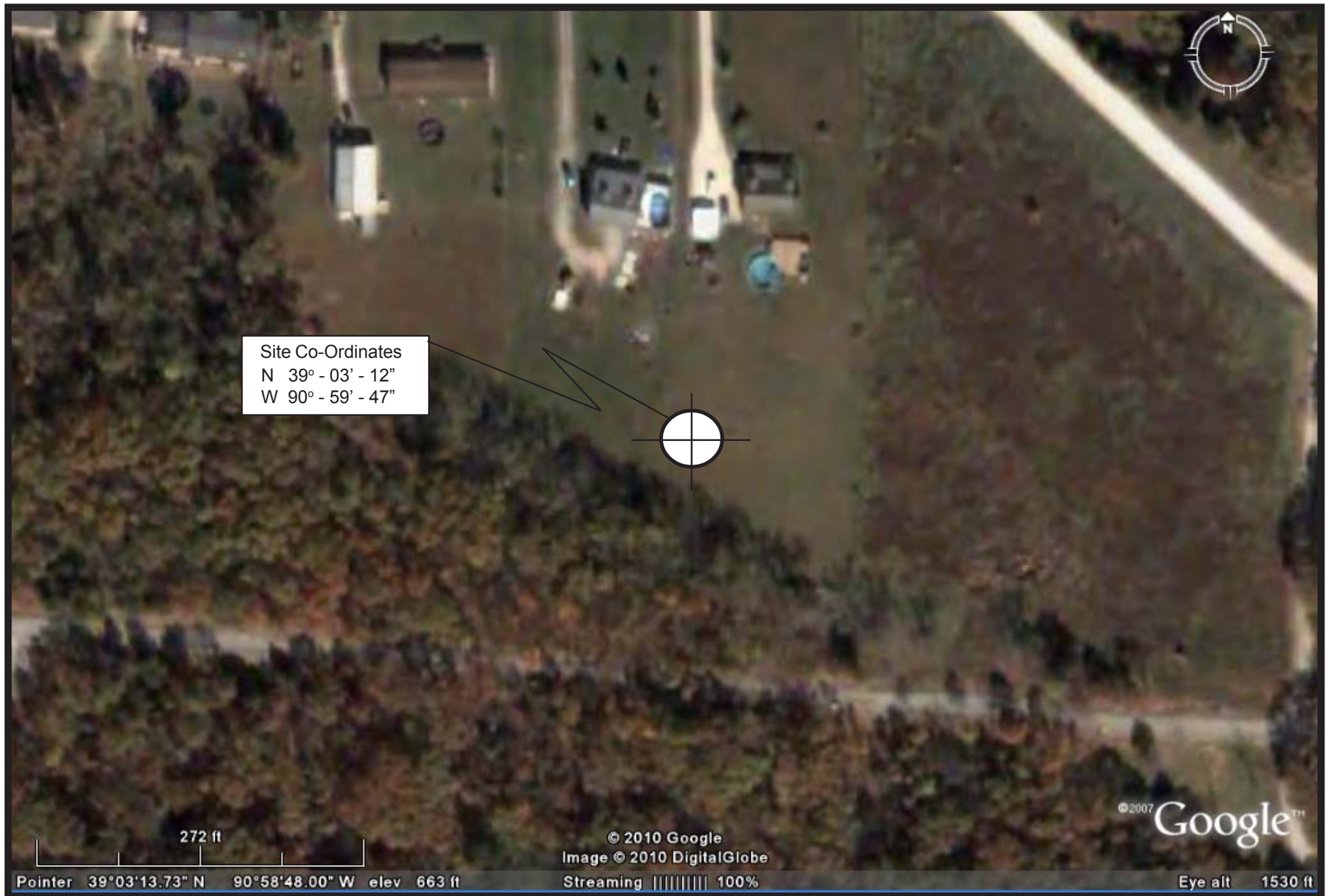


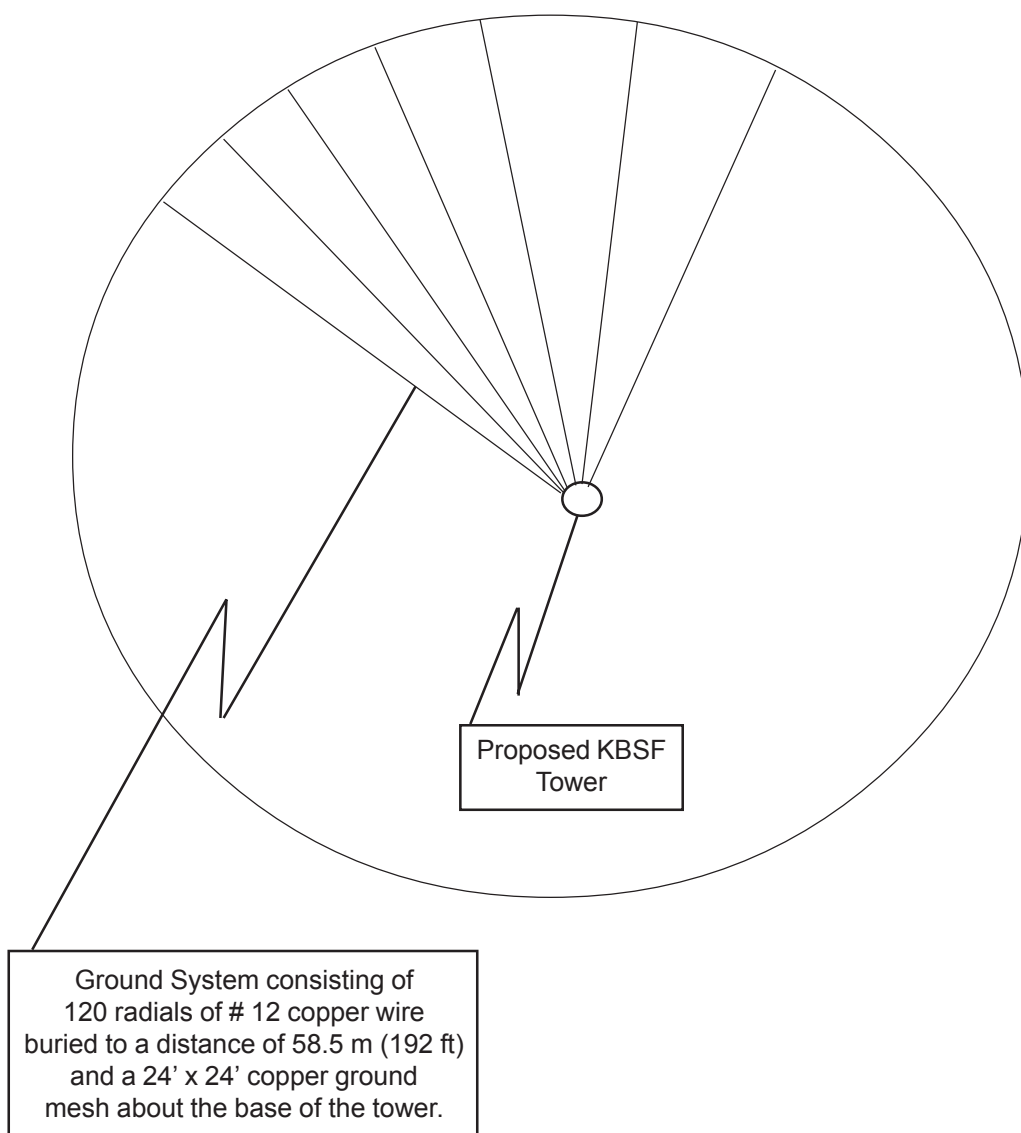
USGS 7.5 Minute Series Map Indicating Proposed KYRO Transmitter Site at Troy, Missouri



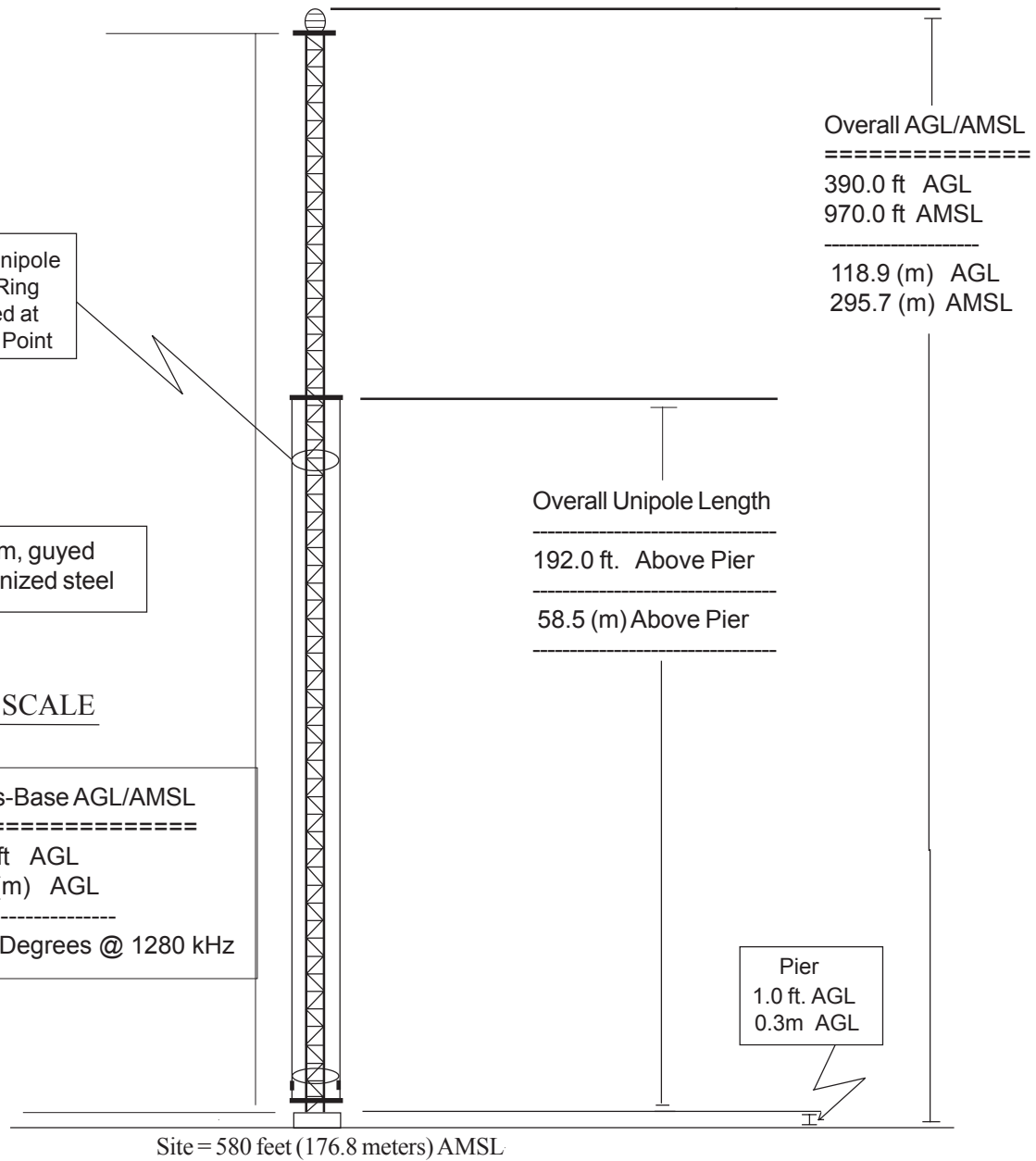
Aerial Photograph of Proposed KYRO Transmitter Site at Troy, Missouri



Proposed KYRO Antenna System Ground System Plat



**VERTICAL PLAN SKETCH FOR
PROPOSED KYRO ANTENNA**
(Amended 10/2010)



**JLF Communications, LLC
KYRO AM 1280 kHz Potosi, MO
October, 2010
Seeks: Change City of License
Make Changes in Antenna System**

Database Coordinates For KFNS – FM Tower
Proposed Site for KYRO AM at Troy, Missouri

Attached to this exhibit is the NADCON (North American Datum Conversion) report for the support structure for KFNS-FM (FCC ID: 29944) at Troy, Missouri which is the proposed non-directional site for KYRO at Troy, Missouri.

The NAD 27 Datum values on the report indicate the geographic coordinates for the site to be:

N 39° – 03' – 12.83021"

W 90° – 59' – 47.49721"

The NAD 83 Datum correction from the above coordinates result in geographic coordinates of:

N 39° – 03" – 13.0000"

W 90° – 59" – 48.0000"

The FCC Registration number for the tower: 1065466 carries the NAD 83 coordinates; however, inasmuch as FCC Form 301 asks for co-ordinates to be stated as NAD 27, the NAD 27 co-ordinates are used for purposes of this application.

Output from NADCON for station

North American Datum Conversion

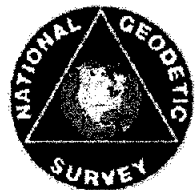
NAD 83 to NAD 27

NADCON Program Version 2.11

=====

Transformation #: 1 Region: Conus

	Latitude	Longitude
NAD 27 datum values:	39 03 12.83021	90 59 47.49721
NAD 83 datum values:	39 03 13.00000	90 59 48.00000
NAD 27 - NAD 83 shift values:	-0.16979	-0.50279 (secs.)
	-5.236	-12.090 (meters)
Magnitude of total shift:		13.175 (meters)

[NGS HOME PAGE](http://www.ngs.noaa.gov)



Audio Division

ASRN Radius Search Results

(202)-418-2700

[FCC](#) > [MB](#) > [Audio Division](#) > [ASRN Within A Radius](#)[WTB ASRN Searches](#)

FCC s

Antenna Structure Registration Records (ASRN) Within a Radius -- Results

NAD 27 center coordinates of 39° 3' 13.00" N latitude, 90° 59' 47.00" W longitude converts to NAD83 coordinates of **39° 3' 13.17" N latitude, 90° 59' 47.48" W longitude**. These NAD83 coordinates will be used as the center of the radius search, as all Antenna Structure Registrations use the NAD83 coordinate system. Towers that have not been registered will not be displayed.

Search Radius: 0.50 kilometers (0.31 miles)

Change

100

ASRN (details)	Distance in km	Azimuth degrees	Site Elevation	Height AGL	Height AMSL	NAD 83 tower coordinates	To NAD27	FAA info
1065466	0.01 km	0.0°	176.8	m	118.9 m	295.7 m 39° 03' 13.0 N 90 ° 59' 48.0 W	NZ	

*** 1 Records Retrieved ***

- Use the blue ASRN link on the left to retrieve detailed data for that ASRN.
- The blue NAD27 link converts the selected tower's coordinates to the NAD27 coordinate system in a new browser.
- The blue FAA Information link (when displayed) retrieves information from the FAA's Internet site.
- Link to ULS ASRN Searches: <http://wireless.fcc.gov/antenna>

Abbreviations:

AGL - Above ground level

AMSL - Above Mean Sea Level

ASRN - Antenna Structure Registration Number

New coordinates / radius search?[FCC Home](#) | [Search](#) | [RSS](#) | [Updates](#) | [E-Filing](#) | [Initiatives](#) | [Consumers](#) | [Find People](#)

Federal Communications Commission
445 12th Street SW
Washington, DC 20554
[More FCC Contact Information...](#)

Phone: 1-888-CALL-FCC (1-888-225-5322)
TTY: 1-888-TELL-FCC (1-888-835-5322)
Fax: 1-866-418-0232
E-mail: fccinfo@fcc.gov

- [Privacy Policy](#)
- [Website Policies & Notices](#)
- [Required Browser Plug-ins](#)
- [Freedom of Information Act](#)