

Exhibit 11

Multicultural Professional Counseling Services

Second-Adjacent Waiver Request

Kansas City, MO

The proposed LPFM station will broadcast on channel 213, which is within the 73 kilometers second-adjacent minimum distance separation of station KKFI on channel 211 and the 73 kilometers second-adjacent minimum distance separation of station KTBG on channel 215. The KKFI interfering contour at the LPFM tower site is 83.0 dBμ F(50,50) and the KTBG interfering contour at the LPFM tower site is 70.7 dBμ F(50,50). Using the ratio of 100:1 (LPFM to KKFI and KTBG) on the second-adjacent channel, the population within the proposed LPFM 123.0 dBμ and 110.7 dBμ contour is zero. Applying the antenna manufacturer's vertical radiation pattern the area of interference can be more accurately calculated geometrically, rather than just by using the free space equation alone. This particular antenna is a two bay 3/4 wave spaced Nicom BKG77 antenna. It was determined from the manufacturer's vertical plan that from 10 to 25 degrees and from 40 to 80 degrees below horizontal the interference area would reach the ground and extend 124.1 meters horizontally. We have proposed the antenna radiation center will be 20 meters above ground with an Effective Radiated Power of 50 watts. There are no occupied structures or elevated roadways within the interference area. Therefore, the application is in compliance with §73.807(e)(1) *Waiver of the second-adjacent channel separations.*

Exhibit 11 Figure 1

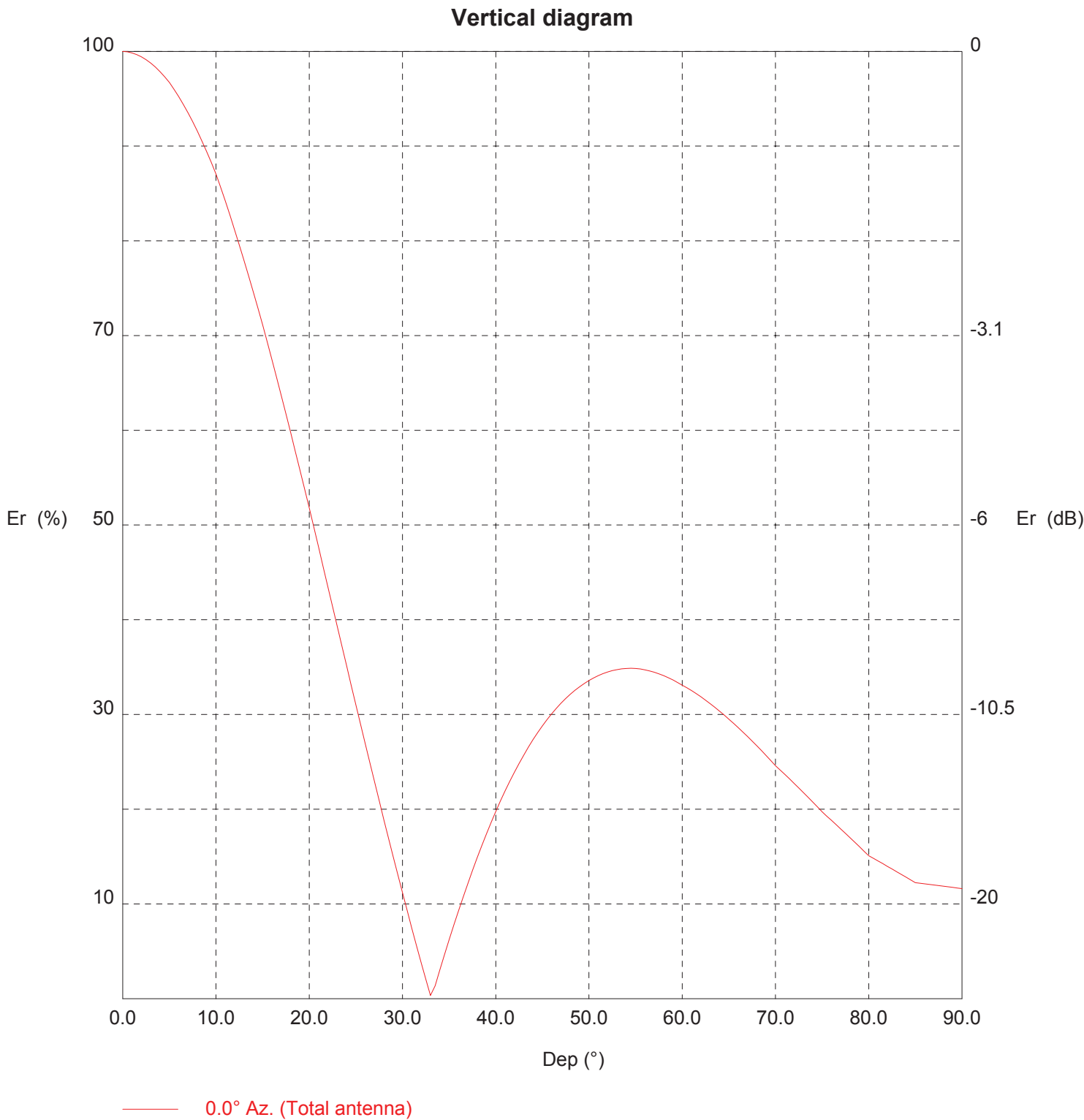
Minimum Ground Clearance

Depression Angle Below Horizontal	Antenna Relative Field	ERP (Watts)	Distance to interfering Contour from Antenna (m)	Horizontal Distance of Interfering contour from tower (m)	Vertical Clearance of Interfering contour above TGL (m)
5	0.967	46.8	140	139.5	7.8
10	0.871	37.9	126	124.1	-1.9
15	0.711	25.3	103	99.5	-6.7
20	0.518	13.4	75	70.5	-5.7
25	0.310	4.8	45	40.8	1.0
30	0.112	0.6	16	13.9	12.0
35	0.062	0.2	9	7.4	14.8
40	0.209	2.2	30	23.0	0.7
45	0.288	4.1	41	29.0	-9.0
50	0.336	5.6	48	30.9	-16.8
55	0.349	6.1	51	29.3	-21.8
60	0.331	5.5	48	24.0	-21.6
65	0.295	4.4	43	18.2	-19.0
70	0.246	3.0	35	12.0	-12.9
75	0.197	1.9	28	7.2	-7.0
80	0.151	1.1	21	3.6	-0.7
85	0.122	0.7	17	1.5	3.1
90	0.117	0.7	17	0.0	3.0
Minimum Clearance above TGL:					2.7

TX station: BKG77/2 GENERIC

Site name: 3/4 WAVE SEPARATION

Frequency: 98.10 MHz



TX station: BKG77/2 GENERIC

Site name: 3/4 WAVE SEPARATION

Frequency: 98.10 MHz

Vertical diagram at an azimuth of 0° degrees

Dep (°)	Er (%)	ERP (W)	Dep (°)	Er (%)	ERP (W)	Dep (°)	Er (%)	ERP (W)
0.0	100.0	914.2	30.0	11.2	11.5	60.0	33.1	100.1
0.5	100.0	913.3	30.5	9.3	7.9	60.5	32.8	98.4
1.0	99.8	911.3	31.0	7.5	5.1	61.0	32.5	96.7
1.5	99.7	908.1	31.5	5.6	2.9	61.5	32.2	94.8
2.0	99.4	903.9	32.0	3.8	1.3	62.0	31.9	92.8
2.5	99.1	898.4	32.5	2.1	0.4	62.5	31.5	90.8
3.0	98.8	891.9	33.0	0.3	0.0	63.0	31.1	88.7
3.5	98.4	884.3	33.5	1.4	0.2	63.5	30.8	86.5
4.0	97.9	875.7	34.0	3.0	0.8	64.0	30.4	84.2
4.5	97.3	865.9	34.5	4.6	2.0	64.5	29.9	81.9
5.0	96.7	855.2	35.0	6.2	3.5	65.0	29.5	79.5
5.5	96.0	842.7	35.5	7.8	5.5	65.5	29.1	77.2
6.0	95.2	829.2	36.0	9.3	7.9	66.0	28.6	74.8
6.5	94.4	814.9	36.5	10.7	10.5	66.5	28.2	72.5
7.0	93.5	799.7	37.0	12.1	13.5	67.0	27.7	70.0
7.5	92.6	783.6	37.5	13.5	16.7	67.5	27.2	67.6
8.0	91.6	766.9	38.0	14.9	20.2	68.0	26.7	65.1
8.5	90.5	749.4	38.5	16.1	23.8	68.5	26.2	62.7
9.0	89.4	731.2	39.0	17.4	27.7	69.0	25.7	60.2
9.5	88.3	712.5	39.5	18.6	31.6	69.5	25.1	57.8
10.0	87.1	693.1	40.0	19.8	35.7	70.0	24.6	55.3
10.5	85.7	670.8	40.5	20.9	39.8	70.5	24.1	53.3
11.0	84.2	648.2	41.0	21.9	43.9	71.0	23.7	51.2
11.5	82.7	625.3	41.5	22.9	48.1	71.5	23.2	49.2
12.0	81.2	602.3	42.0	23.9	52.2	72.0	22.7	47.2
12.5	79.6	579.0	42.5	24.8	56.4	72.5	22.2	45.2
13.0	78.0	555.7	43.0	25.7	60.4	73.0	21.7	43.2
13.5	76.3	532.4	43.5	26.5	64.4	73.5	21.2	41.3
14.0	74.6	509.1	44.0	27.3	68.3	74.0	20.7	39.3
14.5	72.9	485.8	44.5	28.1	72.1	74.5	20.2	37.4
15.0	71.1	462.7	45.0	28.8	75.8	75.0	19.7	35.5
15.5	69.3	439.1	45.5	29.5	79.3	75.5	19.3	33.9
16.0	67.4	415.8	46.0	30.1	82.7	76.0	18.8	32.4
16.5	65.6	392.9	46.5	30.7	85.9	76.5	18.4	30.8
17.0	63.6	370.3	47.0	31.2	88.9	77.0	17.9	29.3
17.5	61.7	348.1	47.5	31.7	91.8	77.5	17.4	27.8
18.0	59.8	326.5	48.0	32.1	94.4	78.0	17.0	26.4
18.5	57.8	305.3	48.5	32.6	96.9	78.5	16.5	24.9
19.0	55.8	284.7	49.0	32.9	99.2	79.0	16.0	23.5
19.5	53.8	264.7	49.5	33.3	101.2	79.5	15.6	22.1
20.0	51.8	245.3	50.0	33.6	103.1	80.0	15.1	20.8
20.5	49.7	226.1	50.5	33.9	104.8	80.5	14.8	20.0
21.0	47.6	207.5	51.0	34.1	106.3	81.0	14.5	19.3
21.5	45.6	189.8	51.5	34.3	107.6	81.5	14.3	18.6
22.0	43.5	172.8	52.0	34.5	108.7	82.0	14.0	17.8
22.5	41.4	156.7	52.5	34.6	109.6	82.5	13.7	17.1
23.0	39.3	141.3	53.0	34.7	110.3	83.0	13.4	16.4
23.5	37.2	126.8	53.5	34.8	110.8	83.5	13.1	15.7
24.0	35.2	113.0	54.0	34.9	111.1	84.0	12.8	15.0
24.5	33.1	100.1	54.5	34.9	111.2	84.5	12.5	14.4
25.0	31.0	88.1	55.0	34.9	111.1	85.0	12.2	13.7
25.5	29.0	76.8	55.5	34.8	110.7	85.5	12.2	13.6
26.0	26.9	66.3	56.0	34.7	110.2	86.0	12.1	13.4
26.5	24.9	56.7	56.5	34.6	109.4	86.5	12.1	13.3
27.0	22.9	47.9	57.0	34.5	108.5	87.0	12.0	13.2
27.5	20.9	39.9	57.5	34.3	107.5	87.5	11.9	13.0
28.0	18.9	32.7	58.0	34.1	106.3	88.0	11.9	12.9
28.5	17.0	26.3	58.5	33.9	104.9	88.5	11.8	12.8
29.0	15.0	20.6	59.0	33.6	103.5	89.0	11.7	12.6
29.5	13.1	15.7	59.5	33.4	101.8	89.5	11.7	12.5

Exhibit 11 Figure 3 Page 1
Aerial Photo of the 124.1 meter Vicinity Surrounding the Proposed Tower Site

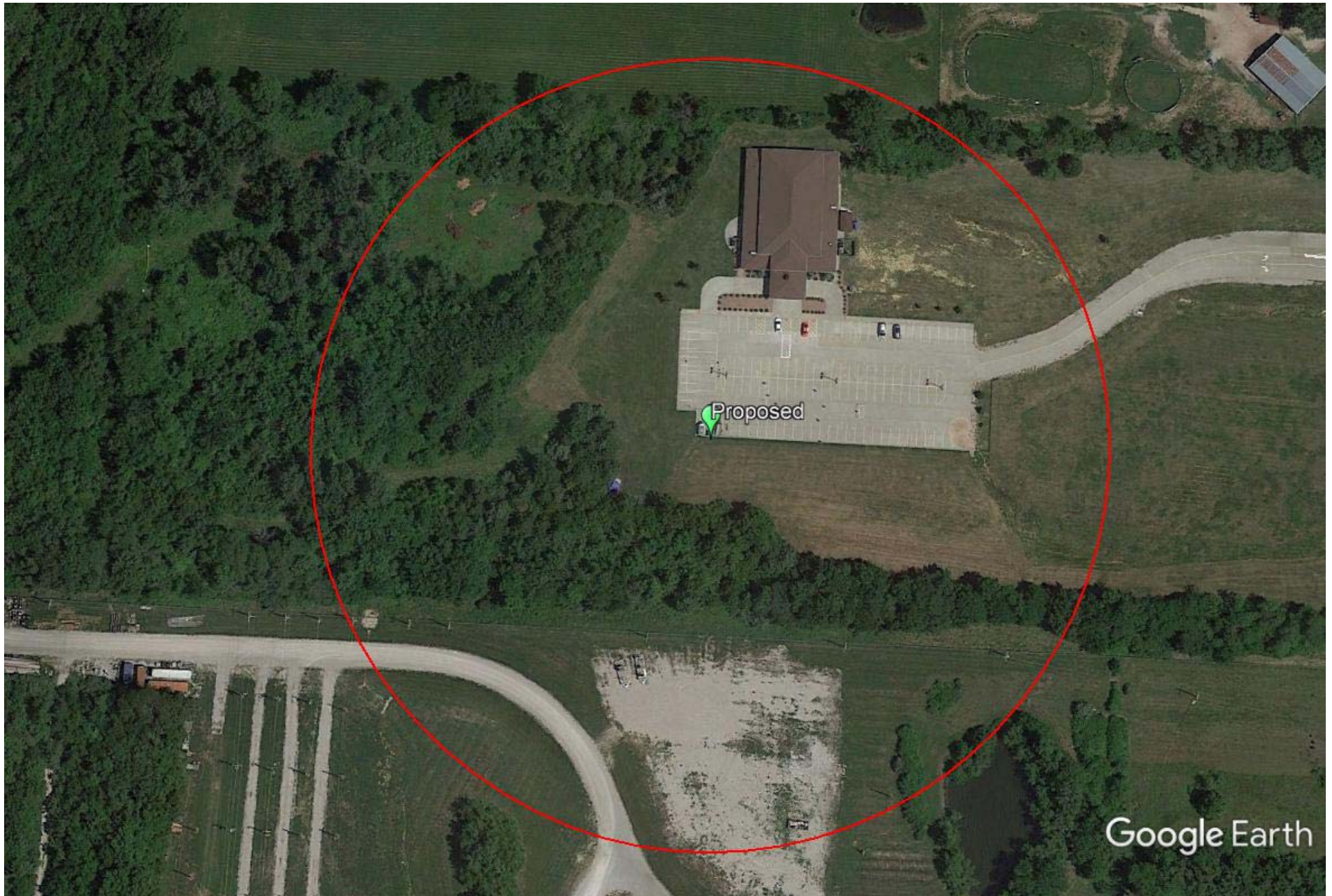


Exhibit 11 Figure 3 Page 2
Quadrangle Map of the 124.1 meter Vicinity Surrounding the Proposed Tower Site

