



# **OWL ENGINEERING & EMC TEST LABS, INC.**

**CONSULTING COMMUNICATIONS ENGINEERS • EMC TEST LABORATORIES**

5844 Hamline Avenue North, Shoreview, MN 55126  
651-784-7445 • Fax 651-784-7541

**ENGINEERING EXHIBIT FOR AN  
APPLICATION FOR A CONSTRUCTION PERMIT  
CHANNEL 221 KRUE FACILITY ID# 294474  
MAIN STREET BROADCASTING, INC  
WASECA, MINNESOTA**

**CHANNEL 221 (92.1 MHZ) CLASS C3 9.8 KW (H&V)  
162 METERS HAAT**

**April 11, 2011**



# **OWL ENGINEERING & EMC TEST LABS, INC.**

**CONSULTING COMMUNICATIONS ENGINEERS • EMC TEST LABORATORIES**

5844 Hamline Avenue North, Shoreview, MN 55126  
651-784-7445 • Fax 651-784-7541

## **TABLE OF CONTENTS**

**Engineering Figure 1**

**Engineering Figure 2**

**Engineering Statement**

**Site Location Map**

**Aerial Site Photograph**



## ENGINEERING STATEMENT

This engineering exhibit, of which this Statement is a part, was prepared in accordance with the Rules and Regulations of the Federal Communications Commission and pursuant to the provisions of Section III-B of FCC Form 301 on behalf of Main Street Broadcasting, Inc (hereafter "**MSB**") in support of an application for authority to modify an existing FM broadcast facility operating on channel 221 (92.1MHz) at Waseca, Minnesota. The instant application proposes to correct the transmitter location coordinates.

The corrected coordinates are:

(NAD 27)

N 44° 02' 44" North Latitude  
W 93° 23' 02" West Longitude

(NAD 83)

N 44° 02' 43.9" North Latitude  
W 93° 23' 2.8" West Longitude

Engineering Exhibit Figure 1 is a portion of the Meriden, Minnesota 7.5 minute U.S.G.S. topographic quadrangle map showing both the licensed and corrected coordinates.

The change of the site coordinates is only 66 meters (219 feet) and there is no change in the required allocation spacing requirements and the city of license is still covered by more than the required 70 dBuv contour.

An application to the FAA (Form 7460) has been filed and has been assigned Study # 2011-AGL-2683-OE. When this FAA study is completed the Antenna Structure Registration (ASR) #1030901 will be modified to reflect the corrected site coordinates.

There is no construction or change in the facilities in either KRUE or the co-located facility KOWZ-FM and the facility still is in compliance with the RF radiation requirements.



# OWL ENGINEERING & EMC TEST LABS, INC.

CONSULTING COMMUNICATIONS ENGINEERS • EMC TEST LABORATORIES

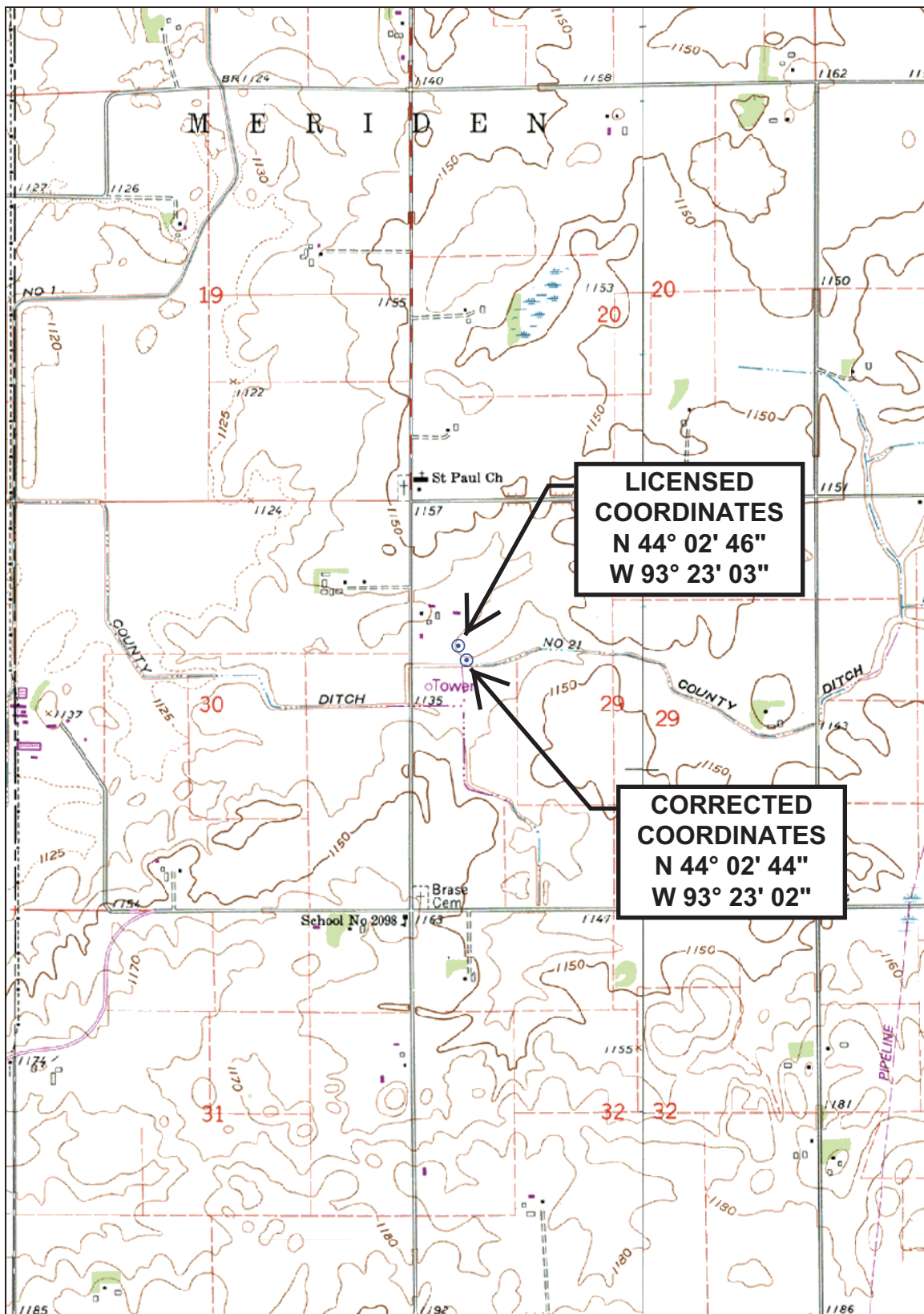
5844 Hamline Avenue North, Shoreview, MN 55126  
651-784-7445 • Fax 651-784-7541

In summary, the KRUE facility is in compliance with the technical FCC Rules and Regulations.

A handwritten signature in black ink, reading "Garrett G. Lysiak". The signature is written in a cursive, flowing style. The first letter of "Garrett" is a large, stylized 'G'. The middle initial 'G' is also stylized. The last name "Lysiak" is written in a similar cursive style.

Garrett G. Lysiak, P.E.

April 11, 2011



Printed: Mon Apr 11, 2011

Declination

SCALE 1:24000



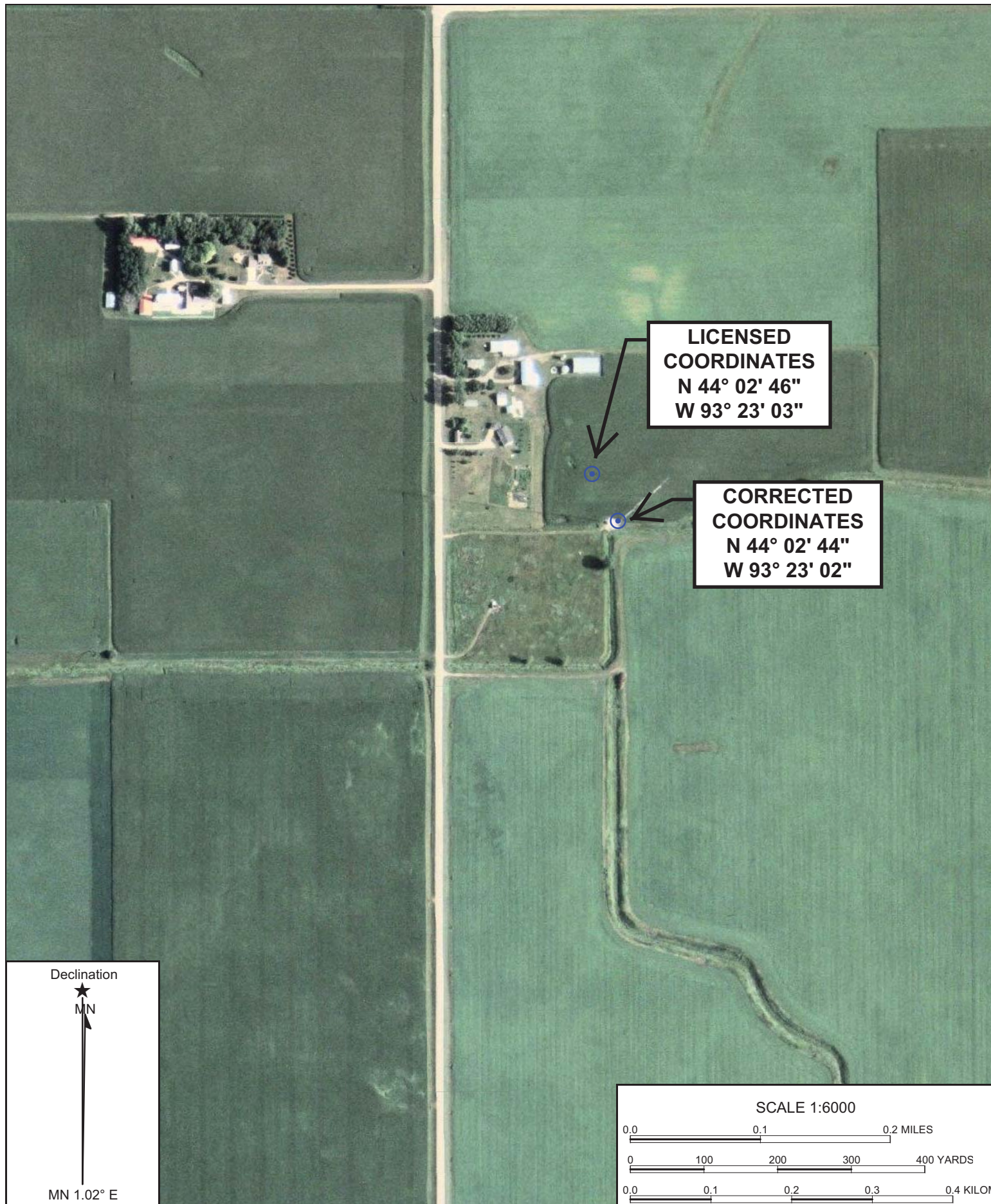
GN 0.27° W  
MN 1.01° E

CONTOUR INTERVAL 10 FEET  
NATIONAL GEODETIC VERTICAL DATUM 1929

MERIDEN,, MN  
1992

**FIGURE 1 - SITE MAP**





Name: MERIDEN SE, MN  
Date: 04/11/11  
Scale: 1 inch = 500 ft.

**FIGURE 2 - AERIAL VIEW**