

DELAWDER COMMUNICATIONS, INC.

P.O. Box 1095
Ashburn, Virginia 20146-1095
(703) 299-9222

ENGINEERING REPORT

K286BW, Midland, TX, Channel 286D Site-move Minor

ENGINEERING STATEMENT

All required protections are met by contour non-overlap pursuant to Section 74.1204, with the exception of protection to KTXC, Lamesa, TX 284C1. KTXC is protected, as discussed below.

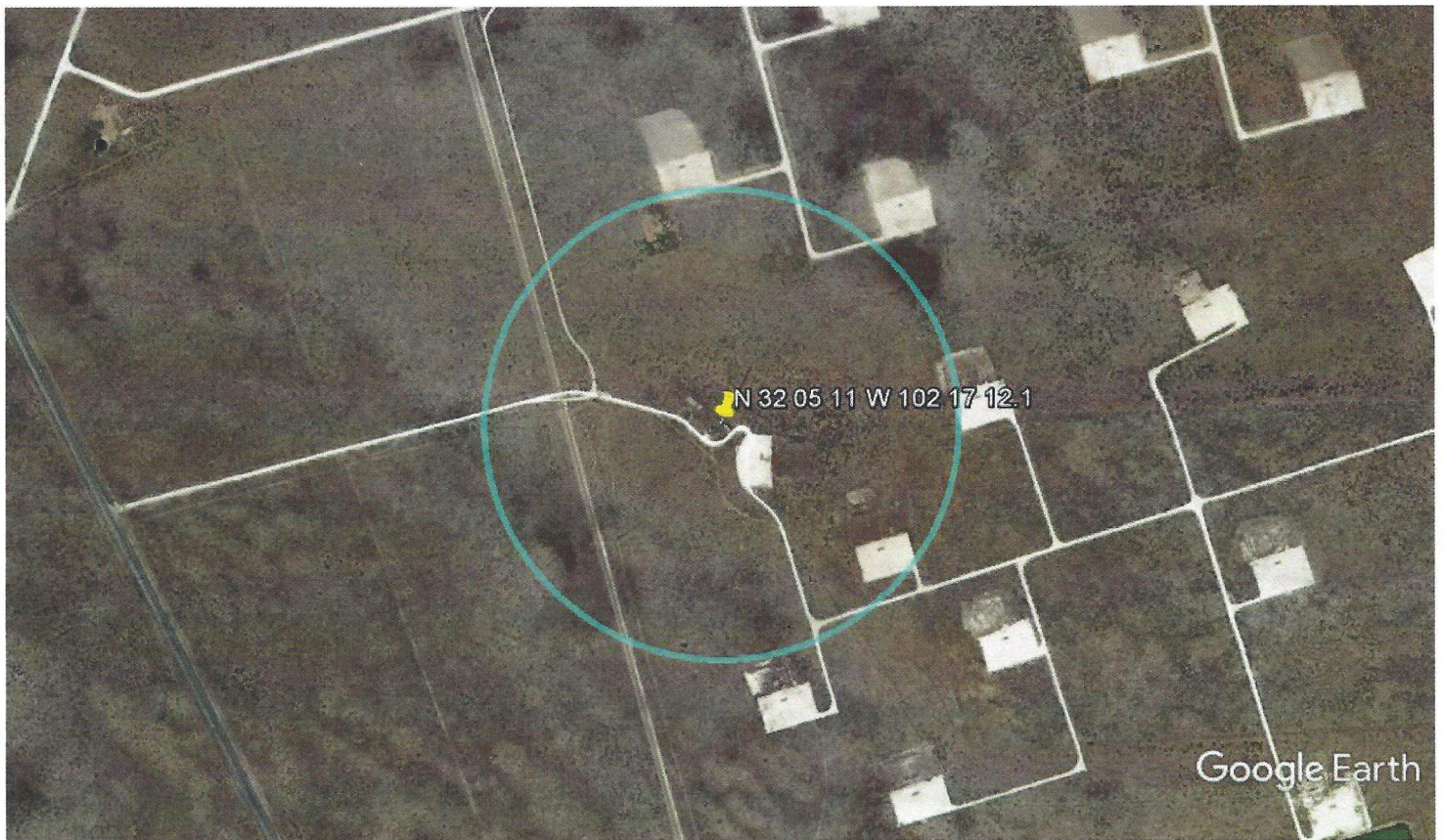
PROTECTION TO KTXC

KTXC 284C1 (46 kilometers at 42 degrees True from the proposed translator site) is a second adjacent-channel station to the proposed channel 286 translator facility. The 60 dBu F50,50 service contour of KTXC extends well beyond the 286D transmitter site. Using the well-established *Living Way Ministries* Methodology, no actual interference to any population is predicted to exist to KTXC.

Note that a rule waiver of Section 74.1204 for this second and third adjacent-channel protection using the well-established *Living Way Ministries* Methodology is respectfully requested if such a rule waiver is deemed necessary for protection to any station.

The F50,50 signal strength from KTXC at the proposed 286D transmitter site is greater than 69 dBu (the "desired" signal). The second/third adjacent-channel protection is an undesired-to-desired ("U/D") dB signal strength ratio of 40:1. Therefore, predicted interference to KTXC is a 286D signal of greater than or equal to 109 dBu.

The 109 dBu signal based on a free space field determination is predicted to extend out to 395 meters from the proposed 286D transmit antenna. The attached aerial photo includes a circular contour of 395 meters radius that is centered at the proposed translator site. No homes, buildings or major roads are located within the 109 dBu FSL contour. Therefore, pursuant to Section 74.1204(d) of the FCC Rules, KTXC is adequately protected by the proposed facility.



Google Earth

feet | 4000
km | 1



PROPOSED 109 DBU FREE SPACE LOSS CONTOUR IS SHOWN.