

## **EXHIBIT 12**

### **Waiver Request of Section 74.1204**

Muscoy, CA K276EF 10 Watts ERP

Calvary Chapel of Twin Falls, Inc.

April 2008

The proposed site is contained entirely inside the service contour of second-adjacent stations KIIS-FM Los Angeles and KOST Los Angeles, CA

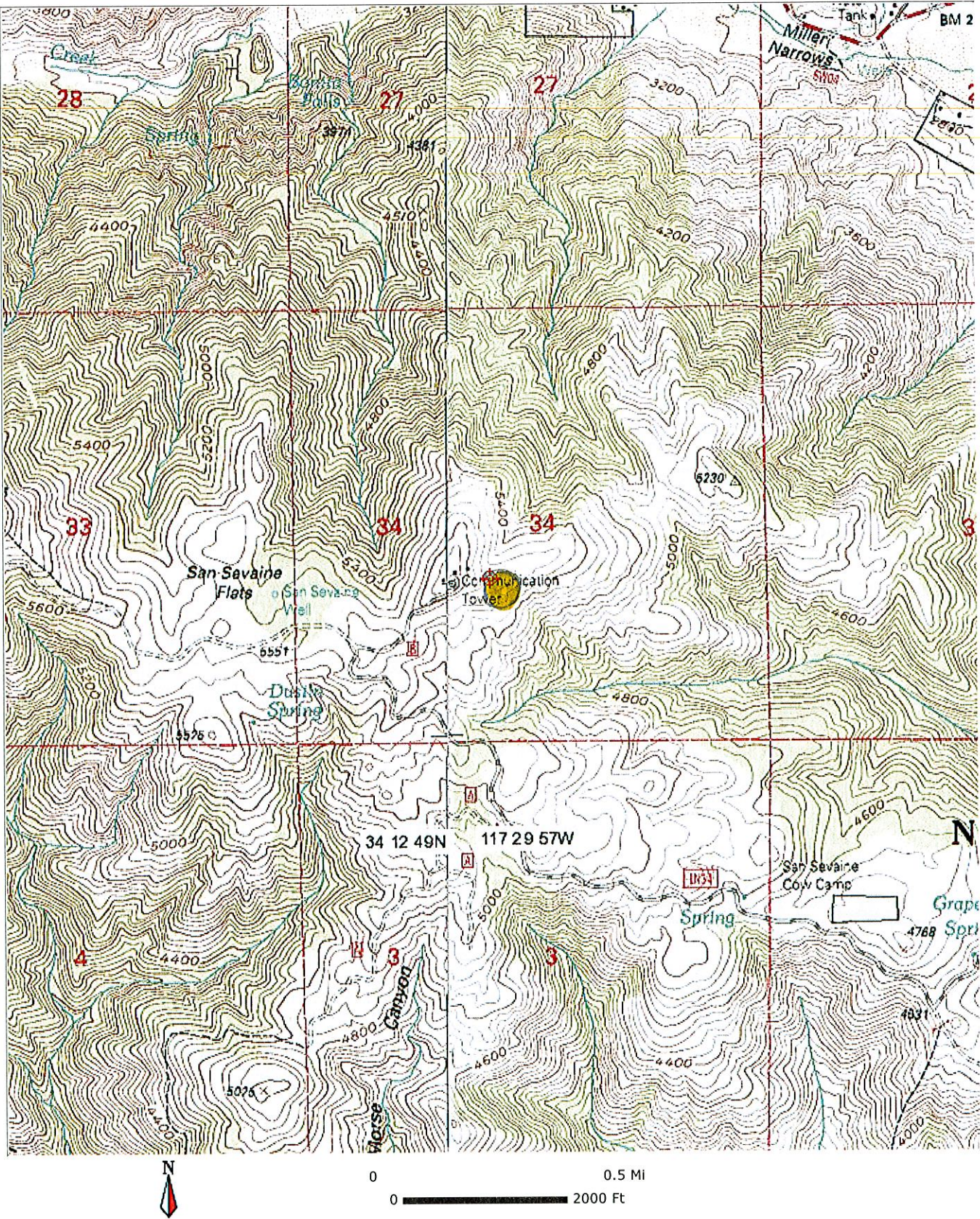
#### **KIIS-FM**

The proposed site is contained entirely inside the service contour of second-adjacent station KIIS-FM, Channel 274, Class B, Los Angeles, CA. The level of least arriving protected F(50,50) signal at the proposed transmitter site is 65.2-dBu. Using the Undesired-to-Desired method for calculating proposed interference, the interfering contour with respect to KIIS-FM is 105.2-dBu (free-space contour method employed). The interfering signal would, in the worst case at the maximum radial, extend 124 meters, or .124km, from the base of the tower. Attached is a section of the Quadrangle Map Cucamonga Peak (interference contour marked in yellow) which shows this tower is located in a very sparsely populated area, which serves as a communications site. There are other towers and their equipment enclosures located at or near this tower site. Because there are no residences, businesses or roads that are located within the interfering contour, Calvary Chapel of Twin Falls, Inc. respectfully requests a waiver of the FM translator contour overlap regulations with respect to second-adjacent channel station KIIS-FM.

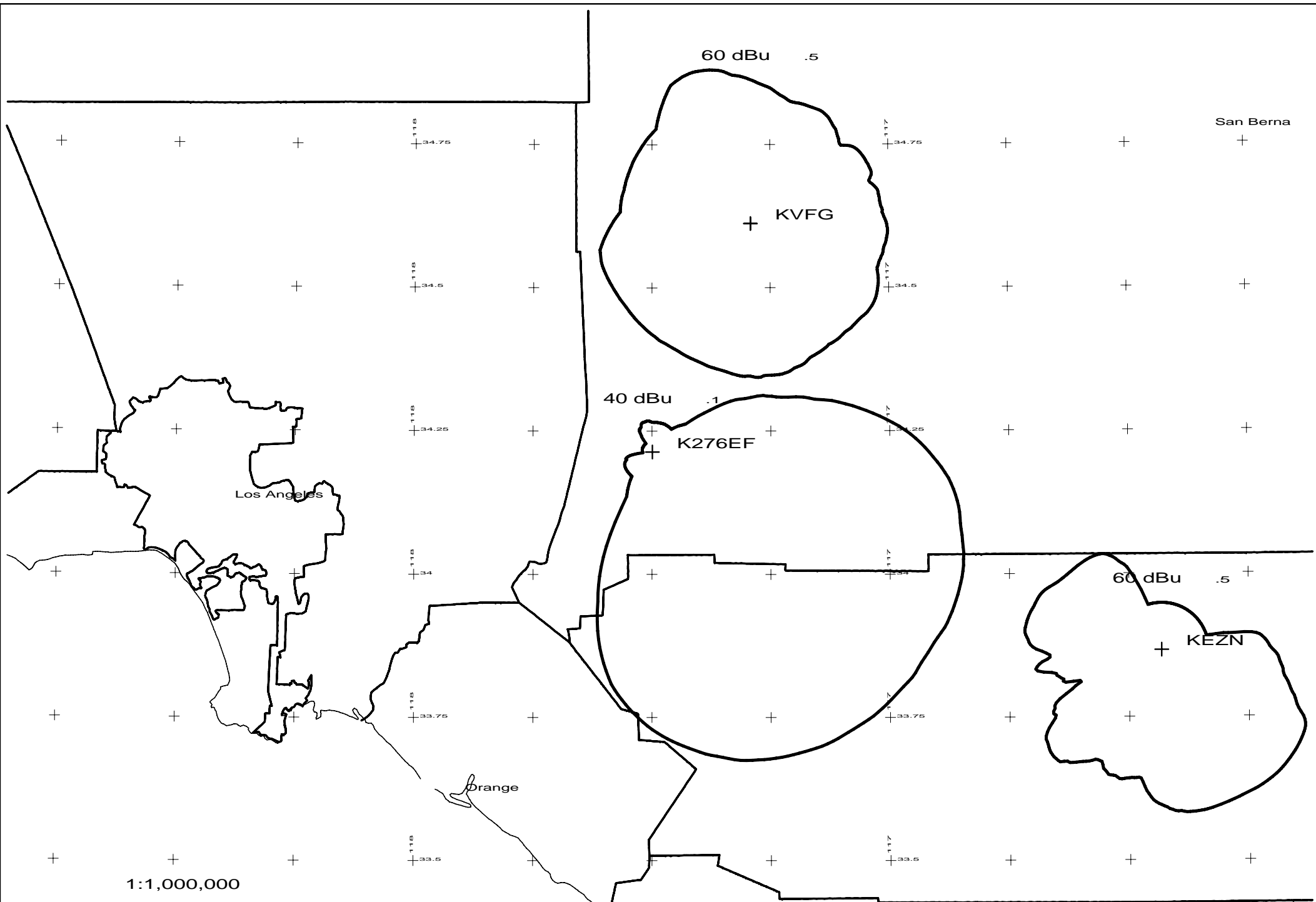
#### **KOST**

The proposed site is contained entirely inside the service contour of second-adjacent station KOST, Channel 278, Class B, Los Angeles, CA. The level of least arriving protected F(50,50) signal at the proposed transmitter site is 68.5-dBu. Using the Undesired-to-Desired method for calculating proposed interference, the interfering contour with respect to KOST is 108.5dBu (free-space contour method employed). The interfering signal would, in the worst case at the maximum radial, extend 85 meters, or .085km, from the base of the tower. Attached is a section of the Quadrangle Map Cucamonga Peak (interference contour marked in yellow) which shows this tower is located in a very sparsely populated area, which serves as a communications site. There are other towers and their equipment enclosures located at or near this tower site. Because there are no residences, businesses or roads that are located within the interfering contour, Calvary Chapel of Twin Falls, Inc. respectfully requests a waiver of the FM translator contour overlap regulations with respect to second-adjacent channel station KOST.



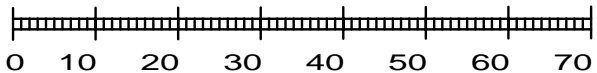






1:1,000,000

Scale in km



K276EF 276D .01kW 1717M AMSL

N. Lat. 34 12 49 W. Lng. 117 29 57

K276EF

CCTF - 04/08