

FM DIRECTIONAL BROADCAST ANTENNA PROOF-OF-PERFORMANCE

MODEL JMPC-4R RFR DA

SERIAL NUMBER 11085

WSSZ

Greensburg, PA



6340 Sky Creek Drive • Sacramento, California USA 95828
(916) 383-1177 phone • (916) 383-1182 fax



6340 Sky Creek Drive, Sacramento, California 95828
P.O. Box 292880, Sacramento, California 95829-2880

(916) 383-1177 FAX (916) 383-11

TABLE OF CONTENTS

A.	Engineer's Statement	1,2
B.	Mechanical Drawings	3,4
C.	Composite Azimuth Pattern, Plot	5
D.	Composite Azimuth Pattern, Tabulation	6
E.	Azimuth Pattern, Horizontal & Vertical Polarizations, Plot	7
F.	Azimuth Pattern, Horizontal & Vertical Polarizations, Tabulation	8
G.	Elevation Plane Pattern, Plot	9
H.	Elevation Plane Pattern, Tabulation	10



6340 Sky Creek Drive, Sacramento, California 95828
P.O. Box 292880, Sacramento, California 95829-2880

(916) 383-1177 FAX (916) 383-11

DATE: August 19, 2002

ANTENNA GAIN	H-pol	V-pol
relative	2.49	2.49
(dBd)	(3.96)	(3.96)

**RMS OF THE
AZIMUTH PATTERNS:**

FM ANTENNA FOR:

STATION: WSSZ

LOCATION: Greensburg, PA

MODEL NUMBER: JMPC-4R RFR DA

FREQUENCY & ERP: 107.1 MHz, 2.85 kW

ANTENNA INPUT POWER: 1.15 kW

ANTENNA BOOM HEADING: 324° T.

Composite	H-pol	V-pol
0.829	0.790	0.649

CERTIFICATION

This certification, along with the accompanying antenna specification sheet, antenna mounting sketches, and azimuth and elevation patterns, certifies the construction and measurement of the *JAMPRO* FM CP antenna to the station's requirements, as measured at the *JAMPRO* antenna site in Sacramento, California. The following is an outline of construction methods, pattern measurements, installation requirements, recommended maintenance and equipment used.

CONSTRUCTION

A standard CP FM antenna model was used and parasitic reflectors were added to create the required directional patterns. From experience and by repeated measurements, these elements were adjusted as to position until the final configuration was determined and the pattern requirements were met. These additional elements are steel, hot dipped galvanized and either bolted or welded in place. Measurements to establish their exact location are shown on the antenna mounting sketches.

MEASUREMENT

The full scale antenna was mounted on an exact duplicate of its final support at the station. We were careful to duplicate conduits, cables and anything peculiar to this mounting. This was then placed on a turntable at the *JAMPRO* antenna range. This directional antenna was used for receiving the radiation from a transmitting antenna that is elevated 25 feet above ground and located at a distance of 7,000 feet. This transmitting antenna is capable of transmitting either horizontal or vertical polarization. The frequency of the signal generator was accurately set to station frequency by use of a frequency counter. A spectrum analyzer was used to continuously measure field strength as the antenna under test was rotated. Field strength at each azimuth was then plotted.



6340 Sky Creek Drive, Sacramento, California 95828
P.O. Box 292880, Sacramento, California 95829-2880

(916) 383-1177 FAX (916) 383-11

PAGE 1 OF 2

Station: **WSSZ**

Model: **JMPC-4R RFR DA**

INSTALLATION

The antenna must be installed in exactly the manner in which it was measured at the factory. This is shown in detail on the antenna mounting sketch, including the azimuth bearing of the elements. This boom must be verified by a surveyor at the site when installation is being completed. Good engineering practices should be followed in any details not covered by specific instructions.

MAINTENANCE

Annual or regular inspection should be made on the antenna system. At this time, tightness of U-bolts, or other fastenings, should be routinely checked. Any deterioration of the antenna due to lightning, or other causes should be promptly repaired.

EQUIPMENT

MODEL: -3000 WAVETEK SIGNAL GENERATOR, SERIAL #66479
 -8591E H.P. SPECTRUM ANALYZER, SERIAL #3308A01312, CAL'd 5/99
 -TUNED CAVITY DIPOLE

CONCLUSION

In the development of this pattern, *JAMPRO* antennas, Inc. observed known requirements of the FCC, as stated on the station construction permit.

Gain figures and required input power to achieve station ERP, as well as other details, are found on the first page.

This certification, with its calculations were performed by J. Dane Jubera, B.S.E.E., Electrical Engineer, *JAMPRO* Antennas, Inc.

EXECUTED THIS 19th DAY OF August, 20 02

BY: J. Dane Jubera
J. Dane Jubera, B.S.E.E. *JAMPRO* Antennas, Inc.

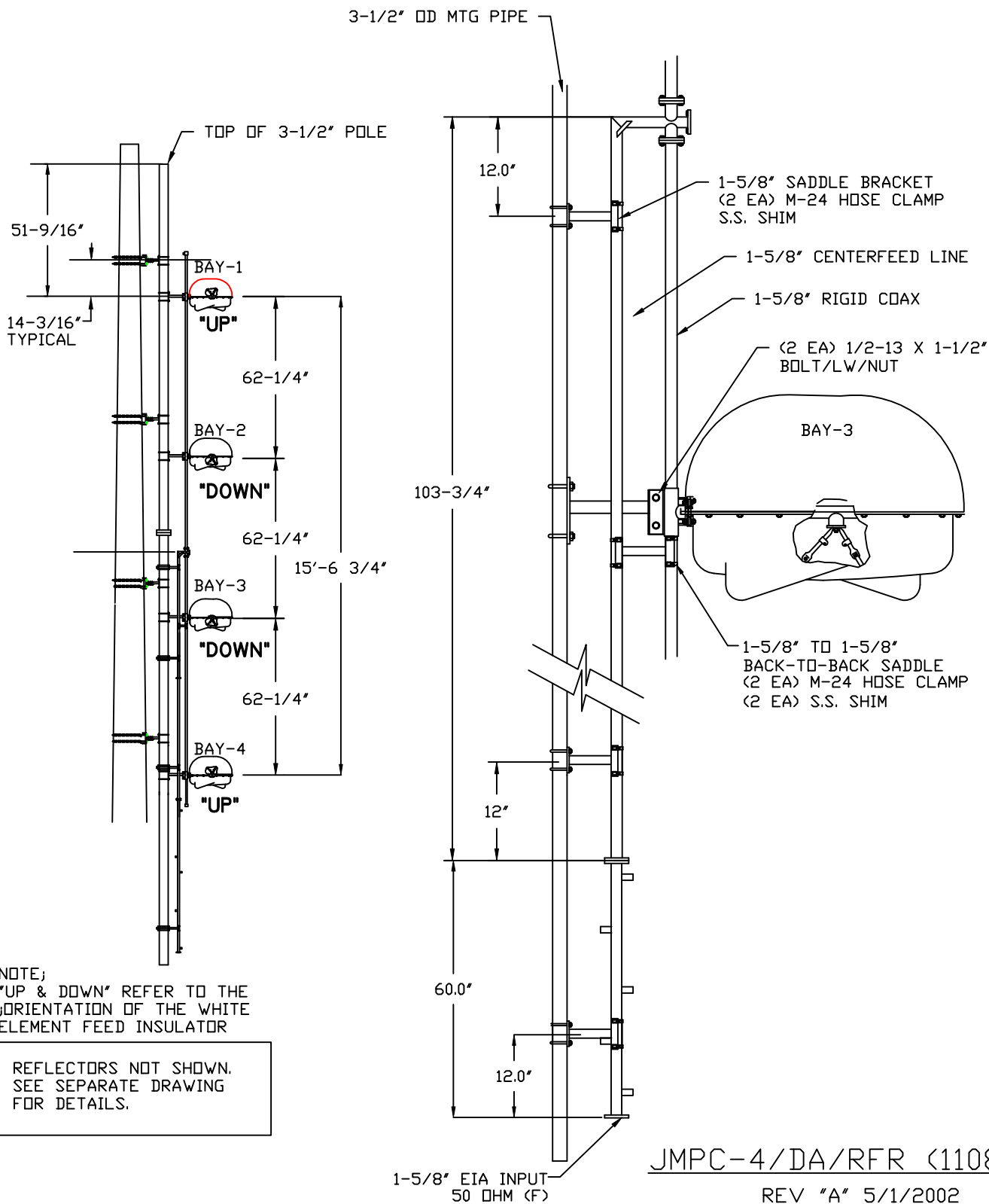
12-22-94/RS

PAGE 2 OF 2



6340 Sky Creek Drive, Sacramento, California 95828
P.O. Box 292880, Sacramento, California 95829-2880

(916)383-1177 FAX (916)383-1182



JMPC-4/DA/RFR (11085

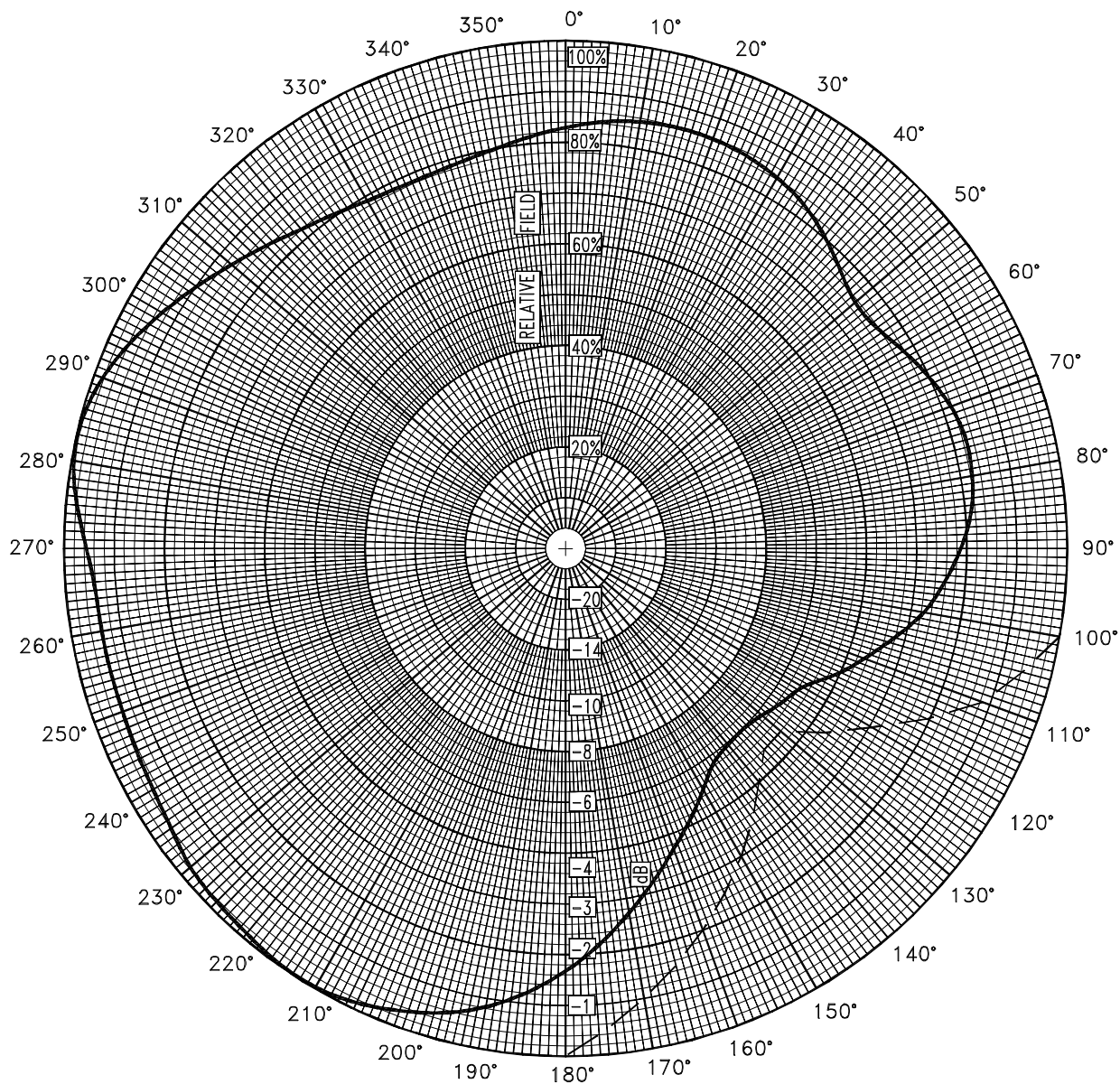
REV "A" 5/1/2002
11085SIDA.DWG



INSTALL ANTENNA AS SHOWN.
VSWR COULD BE EFFECTED IF
INSTALLED DIFFERENTLY.



REV "-" 4/30/2002
11085TOP.DWG



Azimuth Pattern

Customer: WSSZ

Date: April 23, 2002

Frequency: 107.1 MHz

Type Number: JMPC-4R RFR DA

Notes:

COMPOSITE PATTERN ENVELOPE (H & V)



(916) 383-1177 Fax: (916) 383-1182

6340 Sky Creek Drive, Sacramento, CA 95828
P.O. Box 292880, Sacramento, CA 95829-2880



6340 Sky Creek Drive, Sacramento, California 95828
P.O. Box 292880, Sacramento, California 95829-2880

(916) 383-1177 FAX (916) 383-1182

WSSZ

ERP = 2.85 kW

April 23, 2002

JMPC-4R RFR DA

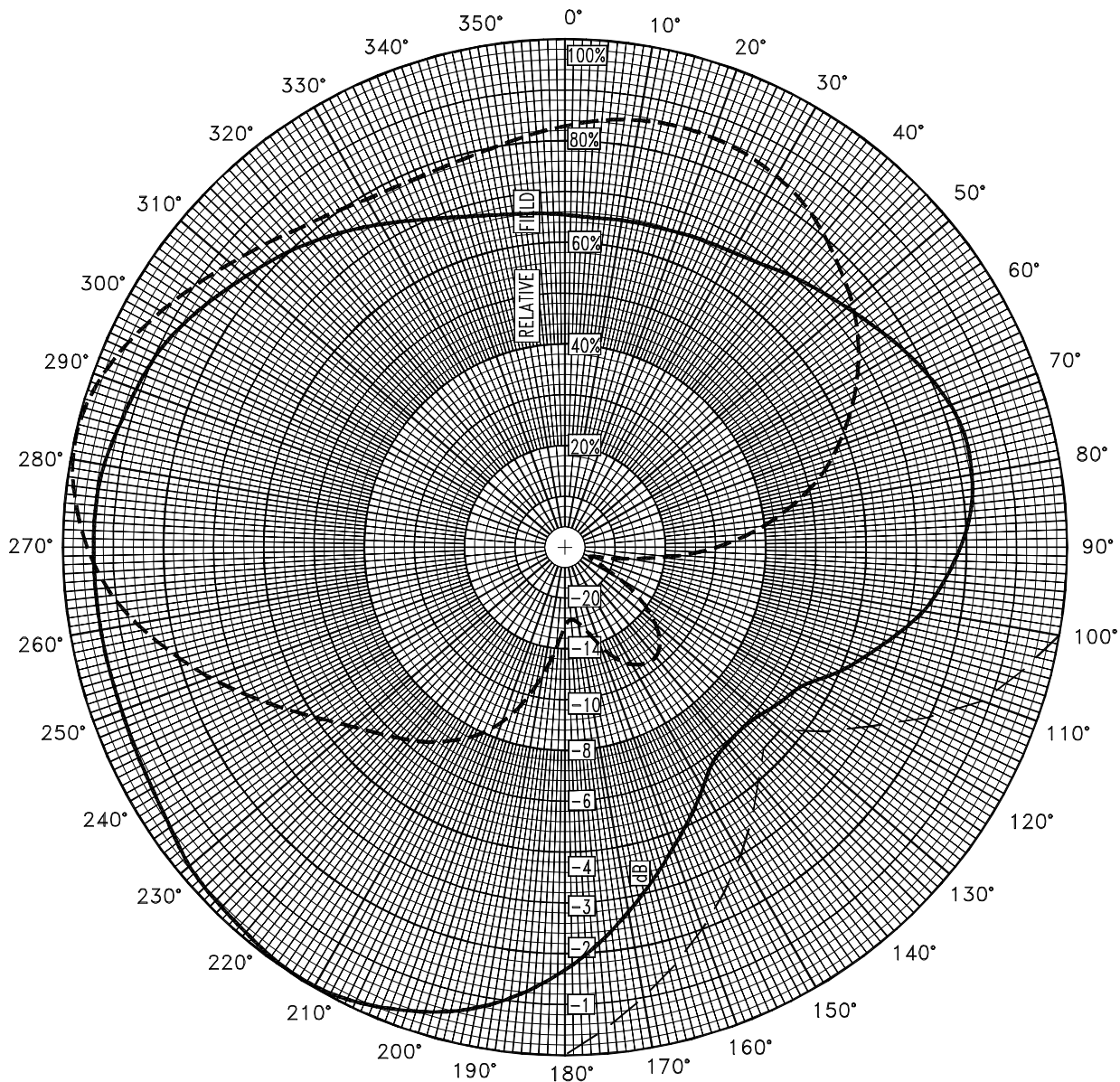
TABULATION OF RELATIVE FIELD

COMPOSITE MEASURED PATTERN (H & V)

<u>BEARING</u>	<u>FIELD</u>	<u>ERP</u> <u>(kW)</u>	<u>dBk</u>
0	0.830	1.96	2.93
10	0.855	2.08	3.19
20	0.860	2.11	3.24
30	0.845	2.03	3.09
40	0.805	1.85	2.66
50	0.750	1.60	2.05
60	0.780	1.73	2.39
70	0.820	1.92	2.82
80	0.825	1.94	2.88
90	0.790	1.78	2.50
100	0.730	1.52	1.81
110	0.635	1.15	0.60
120	0.540	0.83	-0.80
130	0.510	0.74	-1.30
140	0.505	0.73	-1.39
150	0.550	0.86	-0.64
160	0.630	1.13	0.54
170	0.730	1.52	1.81
180	0.835	1.99	2.98
190	0.920	2.41	3.82
200	0.970	2.68	4.28
210	1.000	2.85	4.55
220	0.990	2.79	4.46
230	0.980	2.74	4.37
240	0.950	2.57	4.10
250	0.940	2.52	4.01
260	0.940	2.52	4.01
270	0.955	2.60	4.15
280	1.000	2.85	4.55
290	0.985	2.77	4.42
300	0.930	2.46	3.92
310	0.870	2.16	3.34
320	0.820	1.92	2.82
330	0.790	1.78	2.50
340	0.785	1.76	2.45
350	0.800	1.82	2.61

Relative fields at other azimuths:

45	0.775	225	0.985
135	0.500	315	0.845



Azimuth Pattern

Customer: WSSZ

Date: April 23, 2002

Frequency: 107.1 MHz

Type Number: JMPC-4R RFR DA

Notes: MEASURED PATTERN IN FULL SCALE

— HPOL VPOL - - - LIMITS



6340 Sky Creek Drive, Sacramento, CA 95828
P.O. Box 292880, Sacramento, CA 95829-2880

(916) 383-1177 Fax: (916) 383-1182



6340 Sky Creek Drive, Sacramento, California 95828
P.O. Box 292880, Sacramento, California 95829-2880

(916) 383-1177 FAX (916) 383-1182

WSSZ ERP = 2.85 kW

April 23, 2002

JMPC-4R RFR DA

TABULATION OF MEASURED FIELDS

BEARING	HORIZONTAL POLARIZATION		VERTICAL POLARIZATION	
	FIELD	ERP(kW)	FIELD	ERP(kW)
0	0.655	1.22	0.830	1.96
10	0.655	1.22	0.855	2.08
20	0.660	1.24	0.860	2.11
30	0.670	1.28	0.845	2.03
40	0.700	1.40	0.805	1.85
50	0.735	1.54	0.750	1.60
60	0.780	1.73	0.675	1.30
70	0.820	1.92	0.580	0.96
80	0.825	1.94	0.460	0.60
90	0.790	1.78	0.310	0.27
100	0.730	1.52	0.130	0.05
110	0.635	1.15	0.040	0.00
120	0.540	0.83	0.140	0.06
130	0.510	0.74	0.240	0.16
140	0.505	0.73	0.285	0.23
150	0.550	0.86	0.270	0.21
160	0.630	1.13	0.210	0.13
170	0.730	1.52	0.150	0.06
180	0.835	1.99	0.150	0.06
190	0.920	2.41	0.260	0.19
200	0.970	2.68	0.370	0.39
210	1.000	2.85	0.440	0.55
220	0.990	2.79	0.495	0.70
230	0.980	2.74	0.550	0.86
240	0.950	2.57	0.640	1.17
250	0.940	2.52	0.755	1.62
260	0.940	2.52	0.870	2.16
270	0.940	2.52	0.955	2.60
280	0.935	2.49	1.000	2.85
290	0.910	2.36	0.985	2.77
300	0.880	2.21	0.930	2.46
310	0.830	1.96	0.870	2.16
320	0.785	1.76	0.820	1.92
330	0.735	1.54	0.790	1.78
340	0.690	1.36	0.785	1.76
350	0.665	1.26	0.800	1.82

MAXIMUM FIELDS:

215	1.000	2.85		
285			1	2.85

MINIMUM FIELDS:

135	0.500	0.71		
110			0.04	0.00

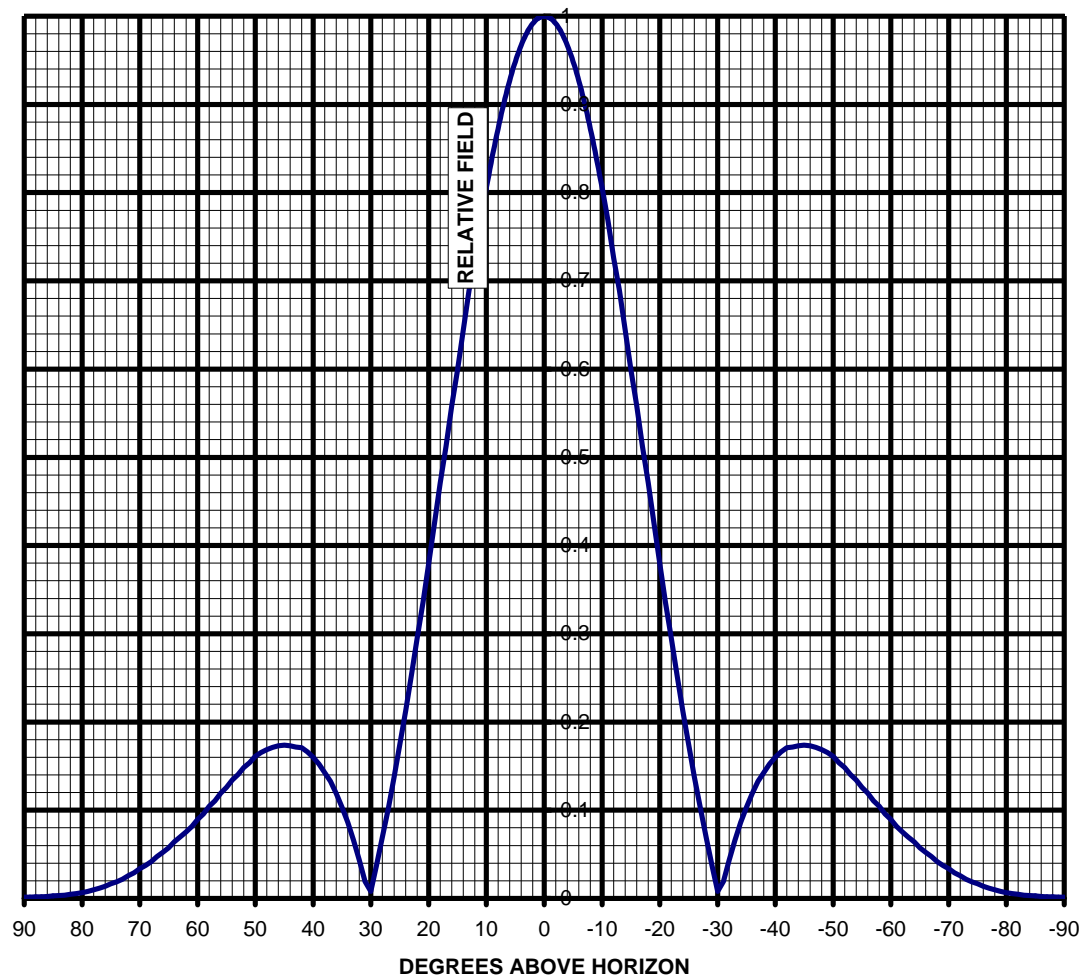


6340 Sky Creek Drive, Sacramento, California 95828
P.O. Box 292880, Sacramento, California 95829-2880

(916) 383-1177 FAX (916)

PLOT OF ELEVATION PLANE PATTERN

STATION: WSSZ 107.1 MHz JMPC-4R RFR DA .50 lambda spacing





6340 Sky Creek Drive, Sacramento, California 95828
P.O. Box 292880, Sacramento, California 95829-2880

(916) 383-1177 FAX (916) 383-1178

TABULATION OF ELEVATION PLANE PATTERN

STATION: WSSZ 107.1 MHz JMPC-4R RFR DA .50 lambda spacing

ELEVATION RELATIVE		ELEVATION RELATIVE		ELEVATION RELATIVE	
<u>ANGLE</u>	<u>FIELD</u>	<u>ANGLE</u>	<u>FIELD</u>	<u>ANGLE</u>	<u>FIELD</u>
10	0.806	-25	0.175	-60	0.090
9	0.840	-26	0.138	-61	0.081
8	0.872	-27	0.102	-62	0.076
7	0.901	-28	0.069	-63	0.070
6	0.927	-29	0.038	-64	0.064
5	0.949	-30	0.008	-65	0.057
4	0.967	-31	0.019	-66	0.052
3	0.981	-32	0.044	-67	0.047
2	0.992	-33	0.066	-68	0.042
1	0.998	-34	0.086	-69	0.037
0	1.000	-35	0.103	-70	0.034
-1	0.998	-36	0.119	-71	0.029
-2	0.992	-37	0.133	-72	0.026
-3	0.981	-38	0.142	-73	0.022
-4	0.967	-39	0.152	-74	0.019
-5	0.949	-40	0.160	-75	0.017
-6	0.927	-41	0.166	-76	0.014
-7	0.901	-42	0.171	-77	0.012
-8	0.872	-43	0.171	-78	0.010
-9	0.840	-44	0.173	-79	0.008
-10	0.806	-45	0.174	-80	0.007
-11	0.768	-46	0.173	-81	0.006
-12	0.726	-47	0.171	-82	0.005
-13	0.689	-48	0.169	-83	0.004
-14	0.644	-49	0.165	-84	0.003
-15	0.599	-50	0.161	-85	0.003
-16	0.559	-51	0.154	-86	0.002
-17	0.512	-52	0.148	-87	0.002
-18	0.471	-53	0.140	-88	0.002
-19	0.425	-54	0.134	-89	0.002
-20	0.380	-55	0.126	-90	0.001
-21	0.335	-56	0.119		
-22	0.295	-57	0.111		
-23	0.253	-58	0.104		
-24	0.212	-59	0.096		