

WGTV-DT CHANNEL 8 MINOR
CHANGE IN LICENSED FACILITY
APPLICATION FOR FINAL
POST-TRANSITION DTV OPERATION
ATHENS, GEORGIA
(Georgia Public Telecommunications Commission)

KESSLER AND GEHMAN ASSOCIATES, INC.
TELECOMMUNICATIONS CONSULTING ENGINEERS

20080312

Prepared by William T. Godfrey, Jr.

KG&A

507 N.W. 60th Street, Suite C
Gainesville, Florida 32607



Kessler and Gehman Associates, Inc.

Telecommunications Consulting Engineers

ENGINEERING TECHNICAL STATEMENT PREPARED BY WILLIAM T. GODFREY, JR. OF THE FIRM KESSLER AND GEHMAN ASSOCIATES, INC., TELECOMMUNICATIONS CONSULTING ENGINEERS IN CONNECTION WITH A MINOR CHANGE IN LICENSED FACILITY APPLICATION (BLET-20071109AAX) REQUESTING AUTHORIZATION TO OPERATE THE GEORGIA PUBLIC TELECOMMUNICATIONS COMMISSION DIGITAL TELEVISION BROADCAST FACILITY, WGTB-DT CHANNEL 8, ON ITS FINAL POST-TRANSITION DIGITAL CHANNEL AS ADOPTED IN THE FINAL DTV TABLE OF ALLOTMENTS.

The firm Kessler and Gehman Associates, Inc. has been retained by the Georgia Public Telecommunications Commission (GPTC), Atlanta, GA to prepare engineering studies and the engineering portion of a minor change in licensed facility application (BLET-20071109AAX) requesting authorization to operate the WGTB-DT facility on its final post-transition digital channel as adopted in the Report and Order in MB Docket No. 07-91, FCC 07-228 *In the Matter of Third Periodic Review of the Commission's Rules and Policies Affecting the Conversion to Digital Television*, Released on December 31, 2007 (R&O). This application also requests authorization to operate the final WGTB-DT Channel 8 post-transition DTV facility with an Effective Radiated Power (ERP), antenna azimuth pattern and antenna height radiation center that deviate slightly from the final DTV Table of Allotments (DTV TOA) adopted in the R&O.

Discussion

The final DTV TOA assigns digital Channel 8 as the WGTB-DT post-transition digital channel. It also assigns the following parameters for the WGTB-DT Channel 8 post-transition facility: 1) an antenna radiation center Height Above Average Terrain (HAAT) of 326 m; 2) antenna ID number 80225; and 3) an Effective Radiated Power (ERP) of 15.9 kW. GPTC filed an FCC Form 387 DTV Transition Report in February 2008 informing the FCC that it planned to request minor changes from the station's final DTV allotment in its construction permit application for post-transition DTV facilities.



GPTC currently operates its analog television broadcast facility, WGTB-TV, on Channel 8 with a Dielectric model TW-12B8-R SP nondirectional antenna mounted on the top of the MAET-owned tower (ASRN: 1018776) at 330 m AAT. GPTC plans to use the existing antenna and transmission line for the WGTB-DT Channel 8 post-transition DTV facility.

Referring to Exhibit 8, it can be seen that the proposed WGTB-DT Channel 8 post-transition facility's F(50,90) 36.0 dBuV/m noise limited contour (dashed red), resulting from an antenna radiation center HAAT of 330.0 m, an ERP of 14.1 kW and a nondirectional antenna, closely matches the F(50,90) 36.0 dBuV/m noise limited contour, resulting from the parameters adopted in the Final DTV TOA (green). The F(50,90) 36.0 dBuV/m noise limited contour, resulting from the parameters adopted in the Final DTV TOA (green), completely encompasses the proposed WGTB-DT Channel 8 post-transition facility's F(50,90) 36.0 dBuV/m noise limited contour (dashed red) in all azimuthal directions.

Expedited Processing

Exhibit 8 demonstrates that the WGTB-DT Channel 8 Final DTV TOA facility's F(50,90) 36.0 dBuV/m noise limited contour (green) completely encompasses the proposed WGTB-DT Channel 8 facility's F(50,90) 36.0 dBuV/m noise limited contour (dashed red). Exhibit 9 is a distance to contour tabulation of the WGTB-DT Channel 8 Final DTV TOA facility. This exhibit depicts the distance, in kilometers, from the transmitter to the WGTB-DT Final DTV TOA facility's noise limited contour in all azimuthal directions. Exhibit 10 is a distance to contour tabulation of the proposed WGTB-DT Channel 8 facility. This exhibit depicts the distance, in kilometers, from the transmitter to the proposed WGTB-DT noise limited contour in all azimuthal directions. Exhibit 11 is a distance to contour comparison spreadsheet which compares the distance from the transmitter to the noise limited contour of the WGTB-DT Final DTV TOA facility (Exhibit 9) and the proposed facility (Exhibit 10). Column four in Exhibit 11 depicts "PASS" if the proposed distance to contour values are less than or equal to the Final DTV TOA distance to contour values or "FAIL" if the proposed distance to contour values are



greater than the Final DTV TOA distance to contour values. Exhibit 11 demonstrates that the Final DTV TOA facility's distance to contour values are greater than or equal to the proposed distance to contour values in all azimuthal directions. Therefore, the proposed facility will not expand the noise limited service contour in any direction beyond that established in Appendix B of the Seventh Report and Order in MB Docket No. 87-268 establishing the new DTV Table of Allotments in 47 C.F.R. Section 73.622(i) ("new DTV Table Appendix B".)

Exhibit 12 is a contour map depicting the WGTV-DT Final DTV TOA facility's F(50,90) 36.0 dBuV/m noise limited contour (green) and the predicted population within that contour based on U.S. Census 2000 data. The population within the WGTV-DT Final DTV TOA facility's F(50,90) 36.0 dBuV/m noise limited contour (green) is predicted to be 4,681,013. The map also depicts the Proposed WGTV-DT facility's F(50,90) 36.0 dBuV/m noise limited contour (dashed red) and the predicted population within that contour based on U.S. Census 2000 data. The population within the Proposed facility's F(50,90) 36.0 dBuV/m noise limited contour (dashed red) is predicted to be 4,677,273 persons. Therefore, the proposed WGTV-DT facility is predicted to serve 3,740 persons less (4,681,013-4,677,273) than the WGTV-DT Final DTV TOA facility which equates to a predicted 0.08% population reduction (3,740/4,681,013) which is well below the 5.0% reduction threshold to qualify for expedited processing.

Accordingly, GPTC respectfully requests expedited processing pursuant to §V.D.1. (§140) of the R&O. This application meets all three of the following conditions required to qualify for expedited processing:

- (1) This application does not seek to expand the station's facilities beyond its final post-transition DTV Table Appendix B facilities;
- (2) This application specifies facilities that match or closely approximate the DTV Table Appendix B facilities (*i.e.*, if the station is unable to build precisely the facilities specified in the new DTV Table Appendix B, then it must apply for facilities that are



- no more than five percent smaller than its facility specified in Appendix B facilities with respect to predicted population); and
- (3) This application was filed within 45 days of the effective date of the Report and Order.

Exhibits

Exhibits 1 and 2 represent WGTV's administration data, antenna and antenna structure specifications.

Exhibit 3 depicts the profile view of the proposed antenna on the antenna structure with all the appropriate elevations.

Exhibits 4 (11 deg) and 5 (90 deg) display the elevation pattern and Exhibit 6 displays the elevation pattern tabulation.

Exhibit 7 depicts the location of the WGTV-DT site on a 7.5-Minute (Series) Topographic map.

Exhibit 8 is an FCC coverage contour map depicting the WGTV-DT Channel 8 Final DTV TOA facility's F(50,90) 36.0 dBuV/m noise limited contour (green) and the proposed WGTV-DT Channel 8 facility's F(50,90) 36.0 dBuV/m noise limited contour (dashed red).

Exhibit 9 is a distance to contour tabulation of the WGTV-DT Final DTV TOA facility. This exhibit depicts the distance, in kilometers, from the transmitter to the authorized WGTV-DT Final DTV TOA noise limited contour in all azimuthal directions.

Exhibit 10 is a distance to contour tabulation of the proposed WGTV-DT facility. This exhibit depicts the distance, in kilometers, from the transmitter to the proposed WGTV-DT noise limited contour in all azimuthal directions.



Exhibit 11 is a distance to contour comparison tabulation spreadsheet between the WGTv-DT Final DTV TOA facility and the proposed WGTv-DT facility. The chart demonstrates that the Final DTV TOA facility's distance to contour values are greater than or equal to the proposed WGTv-DT facility's distance to contour values in all azimuthal directions.

Exhibit 12 is a contour map depicting the WGTv-DT Final DTV TOA facility's F(50,90) 36.0 dBuV/m noise limited contour (green) and the predicted population within that contour based on U.S. Census 2000 data. The map also depicts the Proposed WGTv-DT facility's F(50,90) 36.0 dBuV/m noise limited contour (dashed red) and the predicted population within that contour based on U.S. Census 2000 data.

Exhibit 13 is a principal community contour map demonstrating that the proposed WGTv-DT Channel 8 post-transition DTV facility's F(50,90) 43.0 dBuV/m Principal Community contour would completely encompass the principal community of Athens, GA.

Environmental Impact

The proposed construction would have no significant environmental impact as defined in §1.1307 of the FCC Rules. The digital transmitter, 4-inch (50-ohm) transmission line and antenna system shall produce an ERP of 14.1 kW. It was determined that the maximum lobe of radiation from the base of the tower would occur at approximately 281.6 feet from the base of the tower (301.7-foot radial distance from the antenna center). At approximately 281.6 feet from the base of the tower, the depression angle of the main lobe would be approximately 21° below the horizontal. At that point, the relative field is 0.131 and the power density six feet above the ground would be approximately 0.001 mW/cm². This would only be 0.10% of the Maximum Permissible Exposure (MPE) limits for Occupational/Controlled Exposure and only 0.48% of the MPE limits for General Population/Uncontrolled Exposure authorized by the American National Standards Institute (ANSI).



Kessler and Gehman Associates, Inc.

Telecommunications Consulting Engineers

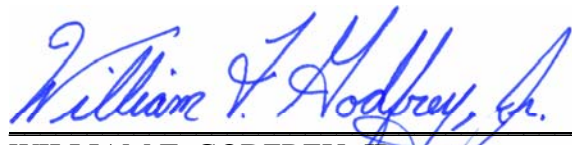
Since operation of the proposed WGTU-DT Channel 8 facility would not exceed 5.0% of the MPE limit for Occupational/Controlled Exposure or General Population/Uncontrolled Exposure at any point on the ground, the proposed WGTU-DT Channel 8 post-transition facility would not be considered a "significant contributor" to the RF exposure environment pursuant to OET Bulletin 65, Edition 97-01. Therefore, contributions of exposure from other sources were not accounted for in this analysis. It is safe to conclude that the emissions would be insignificant and well within the maximum allowable requirements. If other antennas are placed on the tower in the future, the applicant will cooperate with those users by reducing or completely terminating the power to the antenna when maintenance workers are in danger from electromagnetic radiation emanating from the antenna.

Certification

This technical statement was prepared by William T. Godfrey, Telecommunications Consultant with Kessler and Gehman Associates, Inc. having offices in Gainesville, Florida and has been working in the field of radio and television broadcast consulting since 1998. He graduated from the University of North Florida with a Bachelor of Arts degree in Criminal Justice and a minor in Mathematics in 1993. As a Professional in the field of Telecommunications he states under penalty of perjury that the information contained in this report is true and correct to the best of his knowledge and belief.



KESSLER AND GEHMAN ASSOCIATES, INC.


WILLIAM T. GODFREY, JR.
Telecommunications Technical Consultant

12 March, 2008

WGTV-DT CHANNEL 8 POST-TRANSITION DTV FACILITY

ATHENS, GA

ENGINEERING SPECIFICATIONS

A. Transmitter Site:

Geographic coordinates:

North Latitude 33° 48' 18"
West Longitude 84° 08' 40"

Transmitter Site Address: **2 Robert E. Lee Boulevard atop Stone Mountain
Stone Mountain, GA**

B. Main Studio Site Address: 260 14th Street N.W., Atlanta, GA 30318.

C. Post-Transition Facility:

DTV Channel Number 8
Frequency 180-186 MHz
Offset N/A

D. Antenna Height:

Height of Site Above Mean Sea Level (AMSL) 496.4 M
Overall Height of Structure Above Ground 122.5 M
(including all appurtenances)
Overall Height of Structure Above Mean Sea Level 618.9 M
(including all appurtenances)
Height of Site Above Average Terrain 219.9 M
Antenna Height Radiation Center (R/C) Above Ground 110.1 M
Antenna Height R/C Above Mean Sea Level 606.5 M
Average of All Non-Odd Radials 276.5 M
Antenna Height R/C Above Average Terrain 330.0 M

E. System Parameters – Horizontal Polarization:

Transmitter Power Output 1.3 kW
Maximum Power Input to Antenna 1.2 kW
Total System Loss 0.59 dB
Transmission Line Efficiency 87.3%
Maximum Antenna Gain in Beam Maximum 10.79 dB
Maximum Antenna Gain in Horizontal Plane 10.49 dB
Maximum Effective Radiated Power 11.49 dBk
In Beam Maximum 14.1 kW
Maximum Effective Radiated Power 11.19 dBk
In Horizontal Plane 13.2 kW

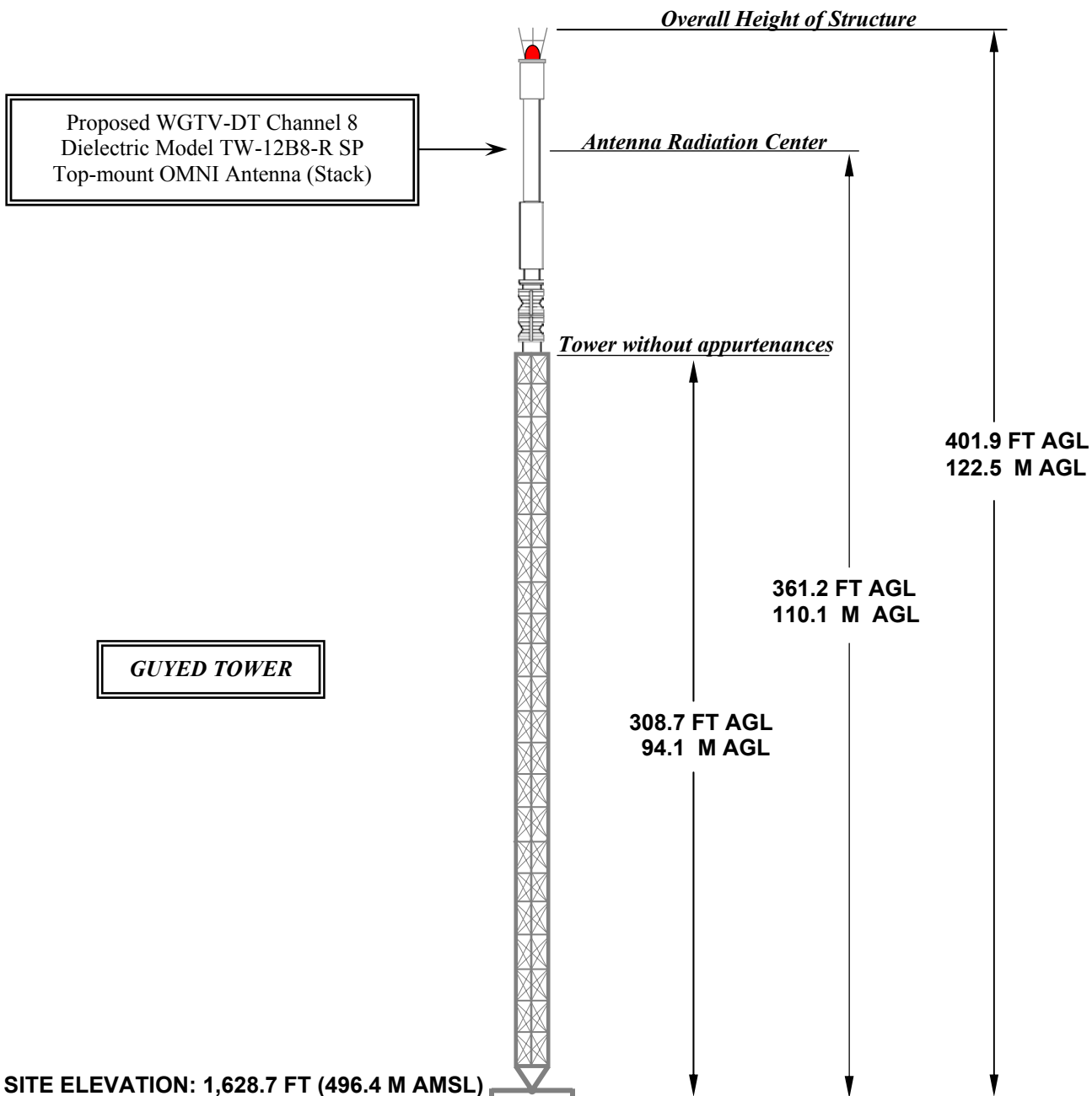
WGTV-DT CHANNEL 8 POST-TRANSITION DTV FACILITY

ATHENS, GEORGIA

DATA FOR PROPOSED NONDIRECTIONAL TRANSMITTING ANTENNA

- A. **Antenna:** Dielectric Model TW-12B8-R SP, Horizontally Polarized, Nondirectional, Top-mount Antenna.
- B. **Electrical Beam Tilt:** 0.75°
- C. **Mechanical Beam Tilt:** None
- D. **Maximum Power Gain** **Horizontal Polarization**
Maximum: 12.0 (10.79 dB)
Horizontal: 11.2 (10.49 dB)
- E. **Length:** 75.3 feet (23.0 meters) not including appurtenances.
- F. **TPO:** 1.3 kW
- G. **Null Fill:** 29.7%
- H. **Transmission Line:** 4-1/16" 50 ohm EIA/DCA
- I. **Transmission Line Loss:** 0.091 dB/100-feet
- J. **Total Transmission Line:** 650 feet
- K. **Transmission Line Attenuation:** 0.59 dB

PROPOSED WGTV-TV ELEVATION VIEW



OVERALL HEIGHT AGL:	122.5 M
OVERALL HEIGHT AMSL:	618.9 M
RADIATION CENTER AGL:	110.1 M
RADIATION CENTER AMSL:	606.5 M
RADIATION CENTER HAAT:	330.0 M
AVG OF ALL NON-ODD RADIALS:	276.5 M
SITE HAAT:	219.9 M

COORDINATES (NAD 27):

N. LATITUDE 33° 48' 18"

W. LONGITUDE 84° 08' 40"

Antenna Structure Registration Number:

1018776

NOTE: NOT TO SCALE

KESSLER AND GEHMAN

TELECOMMUNICATIONS CONSULTING ENGINEERS

507 N.W. 60th Street, Suite C
Gainesville, Florida 32607

WGTV-DT CHANNEL 8

ATHENS, GEORGIA

20080310

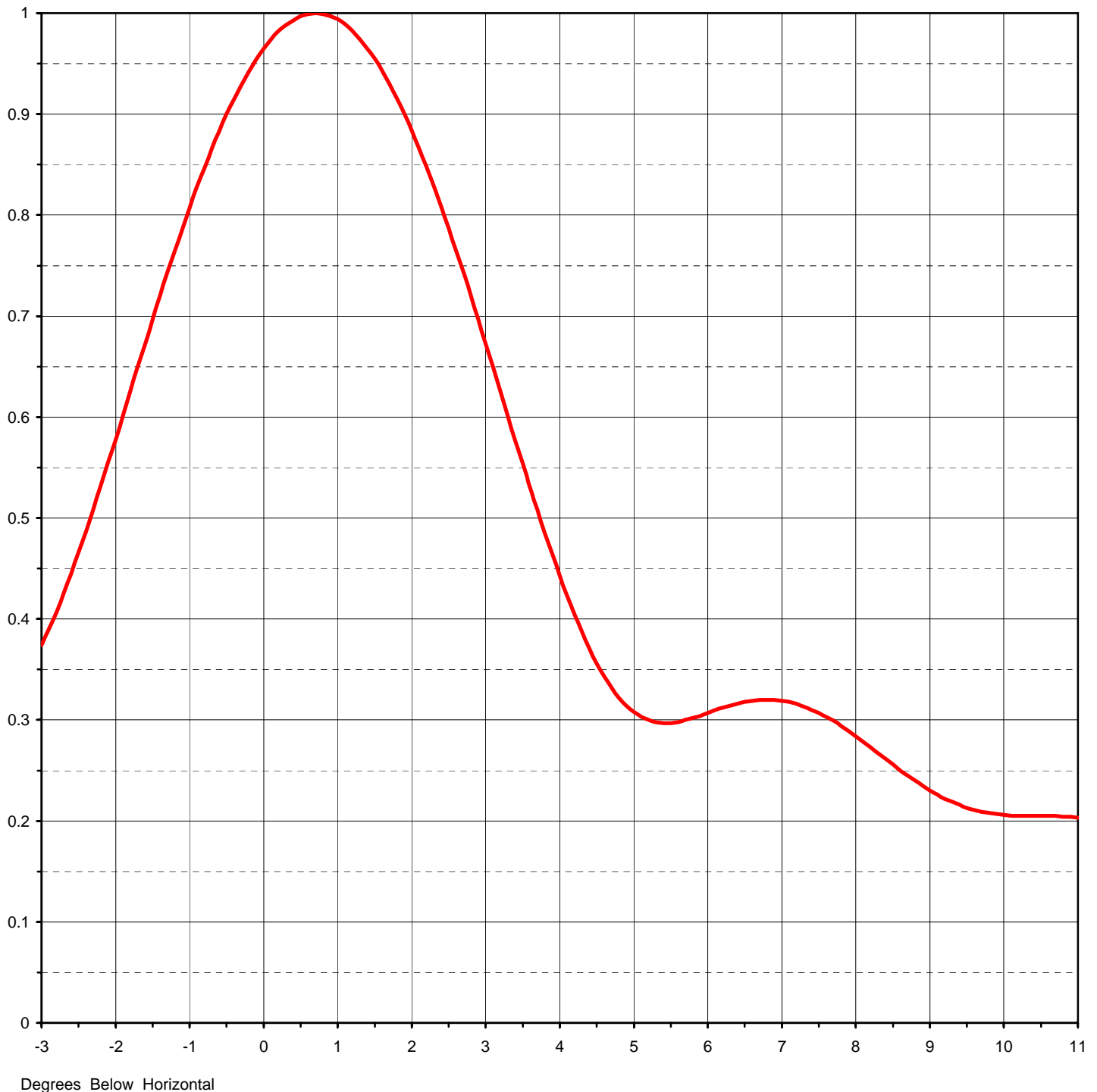
EXHIBIT 3



Proposal Number	C-00920	Revision:	2
Date	5-Mar-07		
Call Letters	WGTV	Channel	8
Location	Athens, GA		
Customer	Georgia Public Television		
Antenna Type	TW-12B8-R SP		

ELEVATION PATTERN

RMS Gain at Main Lobe	12.00 (10.79 dB)	Beam Tilt	0.75 deg
RMS Gain at Horizontal	11.20 (10.49 dB)	Frequency	183.00 MHz
Calculated / Measured	Calculated	Drawing #	25W12007-SP



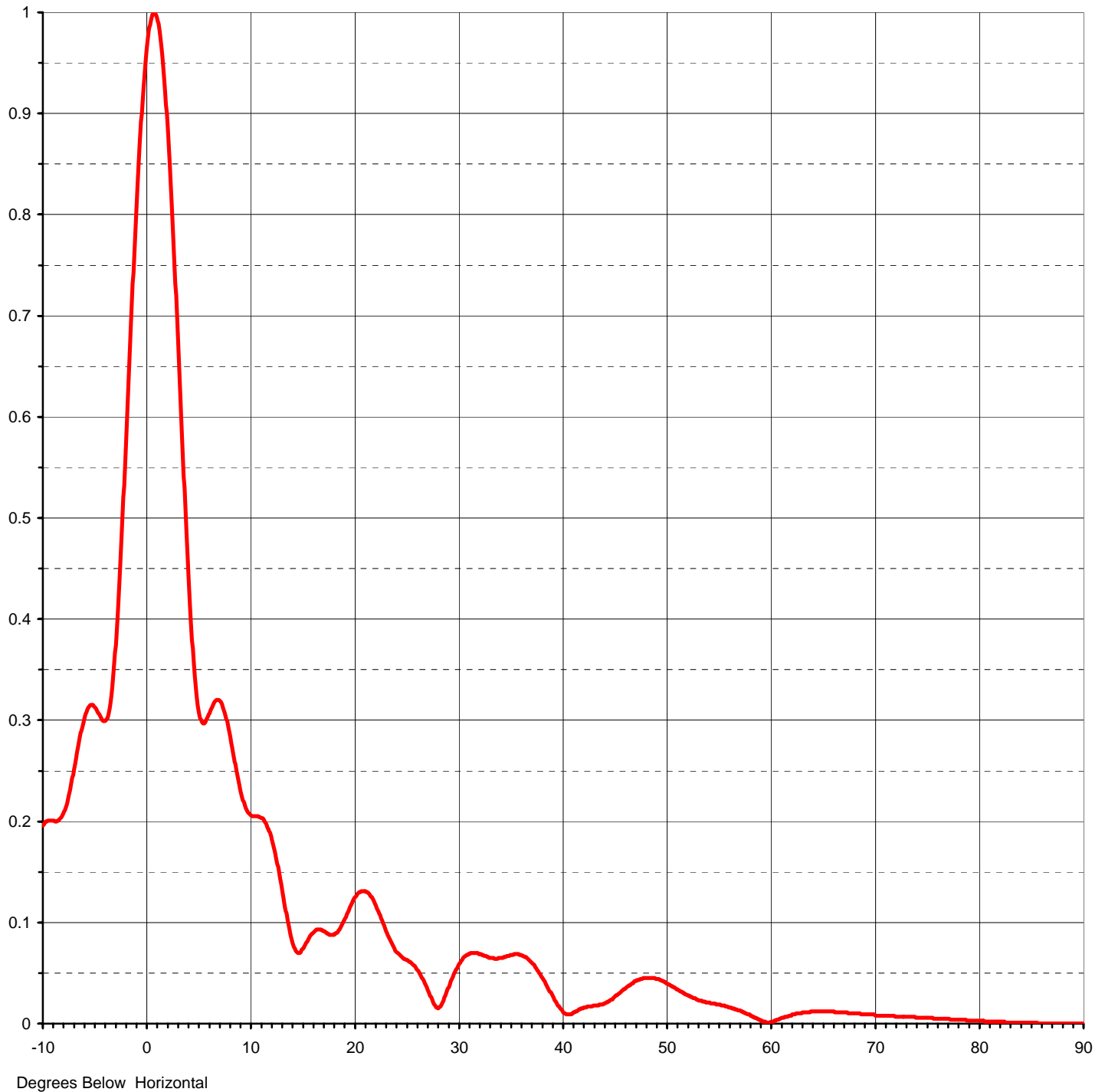


Proposal Number	C-00920	Revision:	2
Date	5-Mar-07		
Call Letters	WGTV	Channel	8
Location	Athens, GA		
Customer	Georgia Public Television		
Antenna Type	TW-12B8-R SP		

ELEVATION PATTERN

RMS Gain at Main Lobe	12.00 (10.79 dB)
RMS Gain at Horizontal	11.20 (10.49 dB)
Calculated / Measured	Calculated

Beam Tilt	0.75 deg
Frequency	183.00 MHz
Drawing #	25W12007-SP-90



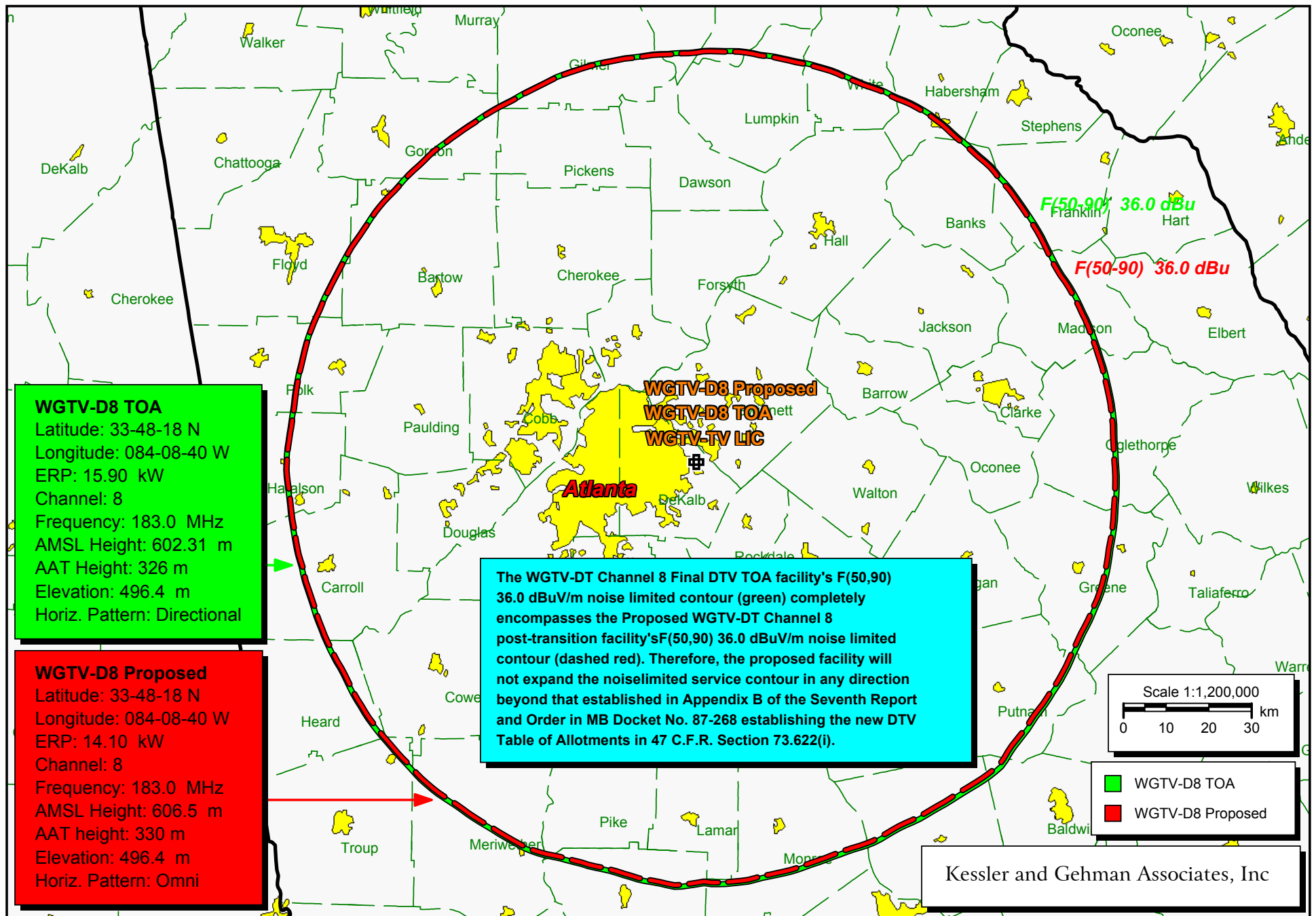


Proposal Number **C-00920** Revision: **2**
 Date **5-Mar-07**
 Call Letters **WGTV** Channel **8**
 Location **Athens, GA**
 Customer **Georgia Public Television**
 Antenna Type **TW-12B8-R SP**

TABULATION OF ELEVATION PATTERN

Elevation Pattern Drawing #: **25W12007-SP-90**

Angle	Field	Angle	Field	Angle	Field	Angle	Field	Angle	Field	Angle	Field
-10.0	0.196	2.4	0.808	10.6	0.205	30.5	0.065	51.0	0.034	71.5	0.008
-9.5	0.201	2.6	0.765	10.8	0.205	31.0	0.069	51.5	0.031	72.0	0.007
-9.0	0.201	2.8	0.720	11.0	0.204	31.5	0.070	52.0	0.028	72.5	0.007
-8.5	0.201	3.0	0.673	11.5	0.199	32.0	0.069	52.5	0.026	73.0	0.007
-8.0	0.208	3.2	0.625	12.0	0.186	32.5	0.067	53.0	0.024	73.5	0.007
-7.5	0.226	3.4	0.577	12.5	0.165	33.0	0.065	53.5	0.022	74.0	0.006
-7.0	0.252	3.6	0.530	13.0	0.138	33.5	0.064	54.0	0.021	74.5	0.006
-6.5	0.280	3.8	0.485	13.5	0.109	34.0	0.065	54.5	0.020	75.0	0.006
-6.0	0.302	4.0	0.443	14.0	0.084	34.5	0.066	55.0	0.019	75.5	0.006
-5.5	0.314	4.2	0.404	14.5	0.071	35.0	0.068	55.5	0.018	76.0	0.005
-5.0	0.313	4.4	0.371	15.0	0.073	35.5	0.069	56.0	0.016	76.5	0.005
-4.5	0.304	4.6	0.343	15.5	0.081	36.0	0.068	56.5	0.015	77.0	0.005
-4.0	0.299	4.8	0.322	16.0	0.089	36.5	0.066	57.0	0.013	77.5	0.004
-3.5	0.317	5.0	0.308	16.5	0.093	37.0	0.061	57.5	0.011	78.0	0.004
-3.0	0.374	5.2	0.300	17.0	0.092	37.5	0.055	58.0	0.009	78.5	0.004
-2.8	0.407	5.4	0.297	17.5	0.089	38.0	0.047	58.5	0.006	79.0	0.003
-2.6	0.445	5.6	0.298	18.0	0.088	38.5	0.038	59.0	0.004	79.5	0.003
-2.4	0.487	5.8	0.302	18.5	0.092	39.0	0.029	59.5	0.002	80.0	0.003
-2.2	0.532	6.0	0.307	19.0	0.101	39.5	0.020	60.0	0.001	80.5	0.002
-2.0	0.578	6.2	0.312	19.5	0.112	40.0	0.013	60.5	0.003	81.0	0.002
-1.8	0.626	6.4	0.316	20.0	0.123	40.5	0.009	61.0	0.005	81.5	0.002
-1.6	0.673	6.6	0.319	20.5	0.130	41.0	0.010	61.5	0.007	82.0	0.002
-1.4	0.720	6.8	0.320	21.0	0.131	41.5	0.013	62.0	0.008	82.5	0.001
-1.2	0.765	7.0	0.319	21.5	0.128	42.0	0.015	62.5	0.010	83.0	0.001
-1.0	0.807	7.2	0.316	22.0	0.119	42.5	0.017	63.0	0.010	83.5	0.001
-0.8	0.847	7.4	0.310	22.5	0.107	43.0	0.018	63.5	0.011	84.0	0.001
-0.6	0.883	7.6	0.303	23.0	0.094	43.5	0.018	64.0	0.012	84.5	0.001
-0.4	0.915	7.8	0.294	23.5	0.082	44.0	0.020	64.5	0.012	85.0	0.001
-0.2	0.942	8.0	0.284	24.0	0.072	44.5	0.022	65.0	0.012	85.5	0.001
0.0	0.965	8.2	0.273	24.5	0.067	45.0	0.026	65.5	0.012	86.0	0.000
0.2	0.982	8.4	0.262	25.0	0.063	45.5	0.030	66.0	0.012	86.5	0.000
0.4	0.993	8.6	0.250	25.5	0.060	46.0	0.034	66.5	0.011	87.0	0.000
0.6	0.999	8.8	0.240	26.0	0.054	46.5	0.038	67.0	0.011	87.5	0.000
0.8	0.999	9.0	0.230	26.5	0.046	47.0	0.042	67.5	0.010	88.0	0.000
1.0	0.994	9.2	0.222	27.0	0.036	47.5	0.044	68.0	0.010	88.5	0.000
1.2	0.982	9.4	0.216	27.5	0.024	48.0	0.045	68.5	0.010	89.0	0.000
1.4	0.965	9.6	0.211	28.0	0.016	48.5	0.045	69.0	0.009	89.5	0.000
1.6	0.943	9.8	0.209	28.5	0.021	49.0	0.044	69.5	0.009	90.0	0.000
1.8	0.916	10.0	0.207	29.0	0.034	49.5	0.043	70.0	0.008		
2.0	0.884	10.2	0.205	29.5	0.046	50.0	0.040	70.5	0.008		
2.2	0.848	10.4	0.205	30.0	0.057	50.5	0.037	71.0	0.008		



WGTV-D8 Final DTV TOA (green) vs. Proposed WGTV-D8 (dashed red)

Distance to Contour Values for WGTW-DT Channel 8 Final DTV TOA Facility

Call Letters: WGTW-D8 TOA
Latitude: 33-48-18 N
Longitude: 084-08-40 W
ERP: 15.90 kW
Channel: 8
Frequency: 183.0 MHz
AMSL Height: 602.31 m
Elevation: 496.4 m
Horiz. Antenna Pattern: Directional

Type of contour: FCC
Location Variability: 50.0 %
Time Variability: 90.0 %
of Radials Calculated: 360
Field Strength: 36.00 dBuV/m

Primary Terrain: 3 Second US Terrain

Bearing (deg)	Distance (km)	HAAT (m)
-----	-----	-----
0.0	95.9	306.9
1.0	96.2	310.5
2.0	96.3	311.9
3.0	96.3	312.2
4.0	96.4	312.9
5.0	96.5	314.6
6.0	96.6	316.2
7.0	96.6	316.0
8.0	96.6	315.3
9.0	96.4	313.4
10.0	96.5	314.4
11.0	96.6	315.1
12.0	96.5	314.8
13.0	96.6	315.0
14.0	96.6	314.9
15.0	96.7	316.4
16.0	96.8	317.6
17.0	96.8	317.9
18.0	96.9	318.4
19.0	96.9	319.1
20.0	96.9	318.5
21.0	96.7	316.5
22.0	96.7	316.0
23.0	96.7	316.4
24.0	96.7	316.5
25.0	96.9	318.8
26.0	97.1	321.3
27.0	97.2	322.7
28.0	97.2	322.6
29.0	97.3	324.0
30.0	97.6	327.4
31.0	97.8	329.9
32.0	97.9	331.2
33.0	98.0	332.0
34.0	98.0	332.4
35.0	97.9	331.7
36.0	97.9	331.2

Distance to Contour Values for WGTV-DT Channel 8 Final DTV TOA Facility

37.0	97.8	329.5
38.0	97.6	327.0
39.0	97.5	325.7
40.0	97.5	326.1
41.0	97.5	325.9
42.0	97.5	325.3
43.0	97.5	325.5
44.0	97.6	327.0
45.0	97.6	327.6
46.0	97.5	326.1
47.0	97.3	323.3
48.0	97.3	323.7
49.0	97.3	323.2
50.0	97.2	321.6
51.0	97.1	319.8
52.0	97.0	318.6
53.0	96.9	317.1
54.0	96.7	315.7
55.0	96.7	314.7
56.0	96.6	313.6
57.0	96.5	311.9
58.0	96.3	309.5
59.0	96.1	307.2
60.0	96.0	305.2
61.0	95.9	304.5
62.0	95.9	304.5
63.0	96.0	306.1
64.0	96.3	309.9
65.0	96.5	312.8
66.0	96.7	314.7
67.0	96.8	316.5
68.0	96.9	317.9
69.0	97.0	318.9
70.0	97.2	321.4
71.0	97.3	323.0
72.0	97.4	323.6
73.0	97.4	324.5
74.0	97.5	325.5
75.0	97.6	326.3
76.0	97.7	327.6
77.0	97.8	329.1
78.0	97.9	330.0
79.0	97.9	330.6
80.0	98.0	331.5
81.0	98.1	332.5
82.0	98.1	333.3
83.0	98.1	333.4
84.0	98.1	333.4
85.0	98.2	333.6
86.0	98.0	332.1
87.0	98.0	331.2
88.0	98.0	331.7
89.0	98.1	332.3
90.0	98.1	333.3
91.0	98.3	334.8
92.0	98.4	336.6
93.0	98.5	337.5

Distance to Contour Values for WGTV-DT Channel 8 Final DTV TOA Facility

94.0	98.5	338.1
95.0	98.6	338.8
96.0	98.6	339.4
97.0	98.7	340.6
98.0	98.9	342.2
99.0	98.9	342.9
100.0	99.0	343.3
101.0	99.0	343.6
102.0	99.0	343.9
103.0	99.2	345.8
104.0	99.3	347.6
105.0	99.4	349.0
106.0	99.5	349.9
107.0	99.6	350.9
108.0	99.6	350.7
109.0	99.5	350.0
110.0	99.4	348.0
111.0	99.3	346.9
112.0	99.3	346.3
113.0	99.1	344.6
114.0	99.0	342.7
115.0	99.0	342.3
116.0	99.0	342.5
117.0	99.0	342.9
118.0	99.2	344.8
119.0	99.3	346.2
120.0	99.3	346.7
121.0	99.4	347.4
122.0	99.4	347.0
123.0	99.3	346.2
124.0	99.4	347.0
125.0	99.4	347.2
126.0	99.3	346.3
127.0	99.3	345.9
128.0	99.5	347.7
129.0	99.6	349.8
130.0	99.7	350.4
131.0	99.8	351.3
132.0	99.9	352.5
133.0	100.1	355.9
134.0	100.6	361.4
135.0	100.8	365.0
136.0	100.7	363.6
137.0	100.6	361.4
138.0	100.3	358.5
139.0	100.1	354.8
140.0	99.8	351.2
141.0	99.5	348.0
142.0	99.3	345.6
143.0	99.2	343.5
144.0	99.0	341.9
145.0	98.8	339.3
146.0	98.7	337.6
147.0	98.6	336.6
148.0	98.5	335.7
149.0	98.4	333.6
150.0	98.1	330.8

Distance to Contour Values for WGTV-DT Channel 8 Final DTV TOA Facility

151.0	98.0	329.2
152.0	98.0	329.6
153.0	98.1	330.9
154.0	98.2	332.5
155.0	98.3	333.2
156.0	98.2	332.1
157.0	98.1	330.4
158.0	97.9	328.0
159.0	97.8	327.0
160.0	97.8	327.1
161.0	97.8	327.1
162.0	97.9	328.5
163.0	97.9	329.3
164.0	98.0	330.1
165.0	98.1	331.9
166.0	98.3	334.0
167.0	98.4	335.4
168.0	98.4	335.8
169.0	98.4	336.0
170.0	98.5	336.8
171.0	98.5	337.3
172.0	98.7	340.0
173.0	98.9	342.7
174.0	99.0	342.8
175.0	99.0	343.0
176.0	99.0	343.4
177.0	98.9	342.9
178.0	98.9	341.9
179.0	98.6	338.2
180.0	98.8	341.8
181.0	99.1	345.5
182.0	99.4	349.2
183.0	99.5	350.7
184.0	99.3	347.7
185.0	99.0	344.2
186.0	98.9	342.2
187.0	98.8	341.1
188.0	98.7	339.4
189.0	98.4	335.7
190.0	98.2	333.2
191.0	97.9	330.3
192.0	97.8	328.6
193.0	97.8	328.2
194.0	97.9	329.4
195.0	97.9	330.0
196.0	97.8	328.9
197.0	97.9	329.8
198.0	98.0	330.8
199.0	98.1	332.1
200.0	98.3	335.1
201.0	98.6	338.8
202.0	98.8	341.2
203.0	98.9	342.6
204.0	98.9	343.1
205.0	98.8	341.7
206.0	98.7	340.1
207.0	98.6	338.8

Distance to Contour Values for WGTV-DT Channel 8 Final DTV TOA Facility

208.0	98.5	337.8
209.0	98.4	336.2
210.0	98.3	335.5
211.0	98.3	335.6
212.0	98.3	335.3
213.0	98.3	334.9
214.0	98.2	333.7
215.0	98.1	333.4
216.0	98.2	334.2
217.0	98.3	335.6
218.0	98.4	337.1
219.0	98.4	337.2
220.0	98.4	336.9
221.0	98.4	336.4
222.0	98.2	334.6
223.0	98.0	332.2
224.0	97.9	330.7
225.0	97.9	330.2
226.0	97.8	329.4
227.0	97.7	328.2
228.0	97.7	327.6
229.0	97.6	327.3
230.0	97.6	326.7
231.0	97.5	326.1
232.0	97.5	325.2
233.0	97.3	323.3
234.0	97.1	321.1
235.0	97.0	319.8
236.0	96.9	318.1
237.0	96.7	315.4
238.0	96.5	312.8
239.0	96.3	310.6
240.0	96.2	309.6
241.0	96.3	310.5
242.0	96.3	310.1
243.0	96.2	309.7
244.0	96.2	309.2
245.0	96.2	308.8
246.0	96.0	307.3
247.0	96.0	306.5
248.0	95.9	305.8
249.0	95.8	304.0
250.0	95.7	302.9
251.0	95.7	302.5
252.0	95.7	302.6
253.0	95.7	303.4
254.0	95.6	302.2
255.0	95.5	300.3
256.0	95.6	301.5
257.0	95.7	302.8
258.0	95.6	302.5
259.0	95.6	302.0
260.0	95.5	301.4
261.0	95.6	301.6
262.0	95.6	302.1
263.0	95.6	302.1
264.0	95.6	301.8

Distance to Contour Values for WGTV-DT Channel 8 Final DTV TOA Facility

265.0	95.6	302.1
266.0	95.6	303.0
267.0	95.7	304.9
268.0	95.9	306.7
269.0	95.9	307.6
270.0	95.9	306.5
271.0	95.8	305.6
272.0	95.7	304.1
273.0	95.5	301.4
274.0	95.4	299.6
275.0	95.2	297.2
276.0	95.1	295.9
277.0	95.1	294.5
278.0	95.1	294.7
279.0	95.1	295.8
280.0	95.2	296.6
281.0	95.2	297.2
282.0	95.2	297.6
283.0	95.2	297.8
284.0	95.2	297.7
285.0	95.2	298.1
286.0	95.3	299.3
287.0	95.3	300.0
288.0	95.3	300.1
289.0	95.3	299.7
290.0	95.3	299.0
291.0	95.2	297.6
292.0	95.1	295.8
293.0	95.1	295.7
294.0	95.0	295.4
295.0	95.0	294.3
296.0	94.9	293.7
297.0	94.9	293.3
298.0	94.9	293.3
299.0	94.9	293.5
300.0	95.0	294.1
301.0	95.0	295.3
302.0	95.1	296.3
303.0	95.0	295.0
304.0	94.9	294.1
305.0	95.0	294.4
306.0	95.0	295.3
307.0	95.1	297.0
308.0	95.2	298.3
309.0	95.2	298.5
310.0	95.1	298.0
311.0	95.0	296.3
312.0	94.9	294.5
313.0	94.9	294.6
314.0	95.0	296.1
315.0	95.1	296.7
316.0	95.0	296.4
317.0	95.0	295.3
318.0	95.0	295.7
319.0	95.1	297.5
320.0	95.1	298.2
321.0	95.1	297.0

Distance to Contour Values for WGTV-DT Channel 8 Final DTV TOA Facility

322.0	95.0	295.3
323.0	95.0	295.3
324.0	95.0	294.6
325.0	95.0	294.3
326.0	94.9	293.9
327.0	94.9	293.6
328.0	95.0	294.7
329.0	95.0	295.5
330.0	95.1	295.7
331.0	95.1	295.6
332.0	95.0	294.7
333.0	95.0	294.3
334.0	95.1	295.7
335.0	95.2	297.7
336.0	95.2	298.8
337.0	95.3	300.2
338.0	95.4	301.7
339.0	95.6	303.8
340.0	95.8	306.4
341.0	95.8	307.2
342.0	95.9	307.3
343.0	95.9	307.6
344.0	95.9	308.2
345.0	96.0	308.7
346.0	96.0	308.9
347.0	96.0	308.2
348.0	95.9	307.5
349.0	95.9	307.5
350.0	95.9	307.7
351.0	95.8	306.2
352.0	95.8	305.6
353.0	95.8	305.9
354.0	95.9	306.6
355.0	95.8	305.8
356.0	95.7	304.5
357.0	95.7	305.0
358.0	95.8	305.2
359.0	95.7	305.0

Distance to Contour Values for WGTV-DT Channel 8 Proposed Facility

Call Letters: WGTV-D8 Proposed
Latitude: 33-48-18 N
Longitude: 084-08-40 W
ERP: 14.10 kW
Channel: 8
Frequency: 183.0 MHz
AMSL Height: 606.5 m
Elevation: 496.4 m
Horiz. Antenna Pattern: Omni

Type of contour: FCC
Location Variability: 50.0 %
Time Variability: 90.0 %
of Radials Calculated: 360
Field Strength: 36.00 dBuV/m

Primary Terrain: 3 Second US Terrain

Bearing (deg)	Distance (km)	HAAT (m)
-----	-----	-----
0.0	95.8	311.0
1.0	96.0	314.7
2.0	96.1	316.1
3.0	96.2	316.4
4.0	96.2	317.1
5.0	96.4	318.8
6.0	96.5	320.4
7.0	96.5	320.2
8.0	96.4	319.5
9.0	96.3	317.6
10.0	96.3	318.6
11.0	96.4	319.3
12.0	96.4	319.0
13.0	96.4	319.1
14.0	96.4	319.1
15.0	96.5	320.6
16.0	96.6	321.8
17.0	96.6	322.1
18.0	96.6	322.6
19.0	96.7	323.3
20.0	96.6	322.7
21.0	96.5	320.7
22.0	96.5	320.2
23.0	96.5	320.6
24.0	96.5	320.7
25.0	96.7	322.9
26.0	96.9	325.5
27.0	97.0	326.9
28.0	97.0	326.8
29.0	97.1	328.2
30.0	97.3	331.6
31.0	97.5	334.1
32.0	97.6	335.4
33.0	97.7	336.1
34.0	97.7	336.6
35.0	97.7	335.9
36.0	97.6	335.4

Distance to Contour Values for WGTV-DT Channel 8 Proposed Facility

37.0	97.5	333.6
38.0	97.3	331.2
39.0	97.2	329.9
40.0	97.2	330.3
41.0	97.2	330.1
42.0	97.2	329.5
43.0	97.2	329.7
44.0	97.3	331.2
45.0	97.4	331.8
46.0	97.2	330.3
47.0	97.0	327.5
48.0	97.0	327.8
49.0	97.0	327.4
50.0	96.9	325.8
51.0	96.7	324.0
52.0	96.7	322.8
53.0	96.5	321.3
54.0	96.4	319.9
55.0	96.4	318.9
56.0	96.3	317.8
57.0	96.1	316.1
58.0	96.0	313.7
59.0	95.8	311.4
60.0	95.6	309.4
61.0	95.6	308.7
62.0	95.6	308.7
63.0	95.7	310.2
64.0	96.0	314.1
65.0	96.2	317.0
66.0	96.4	318.9
67.0	96.5	320.7
68.0	96.6	322.1
69.0	96.7	323.1
70.0	96.9	325.6
71.0	97.0	327.2
72.0	97.0	327.8
73.0	97.1	328.7
74.0	97.2	329.6
75.0	97.3	330.5
76.0	97.4	331.8
77.0	97.5	333.3
78.0	97.5	334.2
79.0	97.6	334.8
80.0	97.7	335.7
81.0	97.7	336.7
82.0	97.8	337.5
83.0	97.8	337.6
84.0	97.8	337.6
85.0	97.8	337.7
86.0	97.7	336.3
87.0	97.6	335.4
88.0	97.7	335.9
89.0	97.7	336.5
90.0	97.8	337.5
91.0	97.9	339.0
92.0	98.0	340.8
93.0	98.1	341.7

Distance to Contour Values for WGTV-DT Channel 8 Proposed Facility

94.0	98.2	342.3
95.0	98.2	343.0
96.0	98.3	343.6
97.0	98.4	344.8
98.0	98.5	346.4
99.0	98.5	347.1
100.0	98.6	347.5
101.0	98.6	347.8
102.0	98.6	348.0
103.0	98.8	350.0
104.0	98.9	351.8
105.0	99.0	353.2
106.0	99.1	354.1
107.0	99.1	355.1
108.0	99.1	354.9
109.0	99.1	354.2
110.0	98.9	352.2
111.0	98.8	351.1
112.0	98.8	350.5
113.0	98.7	348.8
114.0	98.5	346.9
115.0	98.5	346.5
116.0	98.5	346.6
117.0	98.5	347.1
118.0	98.7	349.0
119.0	98.8	350.4
120.0	98.8	350.9
121.0	98.9	351.6
122.0	98.8	351.2
123.0	98.8	350.4
124.0	98.8	351.2
125.0	98.9	351.4
126.0	98.8	350.5
127.0	98.8	350.1
128.0	98.9	351.9
129.0	99.1	354.0
130.0	99.1	354.6
131.0	99.2	355.5
132.0	99.3	356.7
133.0	99.5	360.1
134.0	99.9	365.6
135.0	100.2	369.2
136.0	100.1	367.8
137.0	99.9	365.6
138.0	99.7	362.7
139.0	99.4	359.0
140.0	99.2	355.3
141.0	98.9	352.2
142.0	98.7	349.8
143.0	98.6	347.7
144.0	98.5	346.1
145.0	98.3	343.5
146.0	98.1	341.8
147.0	98.0	340.8
148.0	98.0	339.9
149.0	97.8	337.8
150.0	97.6	335.0

Distance to Contour Values for WGTV-DT Channel 8 Proposed Facility

151.0	97.5	333.4
152.0	97.5	333.8
153.0	97.6	335.1
154.0	97.7	336.7
155.0	97.8	337.4
156.0	97.7	336.3
157.0	97.6	334.6
158.0	97.4	332.2
159.0	97.3	331.2
160.0	97.3	331.3
161.0	97.3	331.3
162.0	97.4	332.7
163.0	97.5	333.5
164.0	97.5	334.3
165.0	97.7	336.1
166.0	97.8	338.2
167.0	98.0	339.6
168.0	98.0	340.0
169.0	98.0	340.2
170.0	98.1	341.0
171.0	98.1	341.5
172.0	98.3	344.2
173.0	98.5	346.9
174.0	98.5	347.0
175.0	98.5	347.2
176.0	98.6	347.6
177.0	98.5	347.1
178.0	98.5	346.1
179.0	98.2	342.4
180.0	98.4	346.0
181.0	98.7	349.6
182.0	99.0	353.4
183.0	99.1	354.9
184.0	98.9	351.9
185.0	98.6	348.4
186.0	98.5	346.4
187.0	98.4	345.3
188.0	98.3	343.6
189.0	98.0	339.9
190.0	97.8	337.4
191.0	97.6	334.5
192.0	97.4	332.8
193.0	97.4	332.3
194.0	97.5	333.5
195.0	97.5	334.2
196.0	97.5	333.1
197.0	97.5	334.0
198.0	97.6	335.0
199.0	97.7	336.3
200.0	97.9	339.3
201.0	98.2	343.0
202.0	98.4	345.3
203.0	98.5	346.8
204.0	98.5	347.3
205.0	98.4	345.9
206.0	98.3	344.3
207.0	98.2	343.0

Distance to Contour Values for WGTV-DT Channel 8 Proposed Facility

208.0	98.1	342.0
209.0	98.0	340.4
210.0	98.0	339.7
211.0	98.0	339.8
212.0	97.9	339.5
213.0	97.9	339.1
214.0	97.8	337.9
215.0	97.8	337.6
216.0	97.9	338.4
217.0	98.0	339.8
218.0	98.1	341.3
219.0	98.1	341.4
220.0	98.1	341.0
221.0	98.0	340.6
222.0	97.9	338.8
223.0	97.7	336.4
224.0	97.6	334.9
225.0	97.6	334.4
226.0	97.5	333.6
227.0	97.4	332.3
228.0	97.3	331.7
229.0	97.3	331.5
230.0	97.3	330.8
231.0	97.2	330.3
232.0	97.2	329.4
233.0	97.0	327.5
234.0	96.9	325.3
235.0	96.8	324.0
236.0	96.6	322.3
237.0	96.4	319.6
238.0	96.2	317.0
239.0	96.1	314.8
240.0	96.0	313.8
241.0	96.0	314.7
242.0	96.0	314.3
243.0	96.0	313.9
244.0	95.9	313.4
245.0	95.9	313.0
246.0	95.8	311.5
247.0	95.7	310.7
248.0	95.7	310.0
249.0	95.6	308.2
250.0	95.5	307.1
251.0	95.4	306.7
252.0	95.4	306.8
253.0	95.5	307.6
254.0	95.4	306.4
255.0	95.3	304.5
256.0	95.4	305.7
257.0	95.5	307.0
258.0	95.4	306.7
259.0	95.4	306.2
260.0	95.4	305.5
261.0	95.4	305.8
262.0	95.4	306.3
263.0	95.4	306.3
264.0	95.4	306.0

Distance to Contour Values for WGTV-DT Channel 8 Proposed Facility

265.0	95.4	306.3
266.0	95.5	307.2
267.0	95.6	309.1
268.0	95.8	310.9
269.0	95.8	311.8
270.0	95.7	310.7
271.0	95.7	309.8
272.0	95.6	308.3
273.0	95.4	305.6
274.0	95.2	303.8
275.0	95.1	301.4
276.0	95.0	300.1
277.0	94.9	298.7
278.0	94.9	298.9
279.0	95.0	300.0
280.0	95.0	300.8
281.0	95.1	301.4
282.0	95.1	301.8
283.0	95.1	302.0
284.0	95.1	301.9
285.0	95.1	302.3
286.0	95.2	303.5
287.0	95.3	304.2
288.0	95.3	304.3
289.0	95.2	303.9
290.0	95.2	303.2
291.0	95.1	301.7
292.0	95.0	300.0
293.0	95.0	299.9
294.0	95.0	299.6
295.0	94.9	298.5
296.0	94.8	297.9
297.0	94.8	297.5
298.0	94.8	297.4
299.0	94.8	297.7
300.0	94.9	298.3
301.0	94.9	299.5
302.0	95.0	300.5
303.0	94.9	299.2
304.0	94.9	298.3
305.0	94.9	298.6
306.0	94.9	299.5
307.0	95.1	301.2
308.0	95.1	302.5
309.0	95.1	302.7
310.0	95.1	302.2
311.0	95.0	300.5
312.0	94.9	298.7
313.0	94.9	298.8
314.0	95.0	300.3
315.0	95.0	300.9
316.0	95.0	300.6
317.0	94.9	299.5
318.0	95.0	299.9
319.0	95.1	301.7
320.0	95.1	302.4
321.0	95.0	301.2

Distance to Contour Values for WGTV-DT Channel 8 Proposed Facility

322.0	94.9	299.5
323.0	94.9	299.5
324.0	94.9	298.8
325.0	94.9	298.5
326.0	94.9	298.1
327.0	94.8	297.8
328.0	94.9	298.9
329.0	95.0	299.7
330.0	95.0	299.9
331.0	95.0	299.8
332.0	94.9	298.9
333.0	94.9	298.5
334.0	95.0	299.9
335.0	95.1	301.9
336.0	95.2	303.0
337.0	95.3	304.4
338.0	95.4	305.9
339.0	95.5	308.0
340.0	95.7	310.6
341.0	95.8	311.4
342.0	95.8	311.4
343.0	95.8	311.7
344.0	95.9	312.4
345.0	95.9	312.9
346.0	95.9	313.1
347.0	95.9	312.4
348.0	95.8	311.7
349.0	95.8	311.7
350.0	95.8	311.9
351.0	95.7	310.4
352.0	95.7	309.8
353.0	95.7	310.1
354.0	95.7	310.8
355.0	95.7	310.0
356.0	95.6	308.7
357.0	95.6	309.2
358.0	95.6	309.4
359.0	95.6	309.1

WGTV-DT (Final DTV TOA) and WGTV-DT (Proposed) Distance to Contour Comparison Chart

Radial	WGTV-DT Final DTV TOA distance to contours (km)	WGTV-DT Proposed distance to contours (km)	PASS OR FAIL	Difference
0	95.9	95.8	PASS	0.1
1	96.2	96.0	PASS	0.2
2	96.3	96.1	PASS	0.2
3	96.3	96.2	PASS	0.1
4	96.4	96.2	PASS	0.2
5	96.5	96.4	PASS	0.1
6	96.6	96.5	PASS	0.1
7	96.6	96.5	PASS	0.1
8	96.6	96.4	PASS	0.2
9	96.4	96.3	PASS	0.1
10	96.5	96.3	PASS	0.2
11	96.6	96.4	PASS	0.2
12	96.5	96.4	PASS	0.1
13	96.6	96.4	PASS	0.2
14	96.6	96.4	PASS	0.2
15	96.7	96.5	PASS	0.2
16	96.8	96.6	PASS	0.2
17	96.8	96.6	PASS	0.2
18	96.9	96.6	PASS	0.3
19	96.9	96.7	PASS	0.2
20	96.9	96.6	PASS	0.3
21	96.7	96.5	PASS	0.2
22	96.7	96.5	PASS	0.2
23	96.7	96.5	PASS	0.2
24	96.7	96.5	PASS	0.2
25	96.9	96.7	PASS	0.2
26	97.1	96.9	PASS	0.2
27	97.2	97.0	PASS	0.2
28	97.2	97.0	PASS	0.2
29	97.3	97.1	PASS	0.2
30	97.6	97.3	PASS	0.3
31	97.8	97.5	PASS	0.3
32	97.9	97.6	PASS	0.3
33	98.0	97.7	PASS	0.3
34	98.0	97.7	PASS	0.3
35	97.9	97.7	PASS	0.2
36	97.9	97.6	PASS	0.3
37	97.8	97.5	PASS	0.3
38	97.6	97.3	PASS	0.3
39	97.5	97.2	PASS	0.3
40	97.5	97.2	PASS	0.3
41	97.5	97.2	PASS	0.3
42	97.5	97.2	PASS	0.3
43	97.5	97.2	PASS	0.3
44	97.6	97.3	PASS	0.3
45	97.6	97.4	PASS	0.2
46	97.5	97.2	PASS	0.3
47	97.3	97.0	PASS	0.3

WGTV-DT (Final DTV TOA) and WGTV-DT (Proposed) Distance to Contour Comparison Chart

48	97.3	97.0	PASS	0.3
49	97.3	97.0	PASS	0.3
50	97.2	96.9	PASS	0.3
51	97.1	96.7	PASS	0.4
52	97.0	96.7	PASS	0.3
53	96.9	96.5	PASS	0.4
54	96.7	96.4	PASS	0.3
55	96.7	96.4	PASS	0.3
56	96.6	96.3	PASS	0.3
57	96.5	96.1	PASS	0.4
58	96.3	96.0	PASS	0.3
59	96.1	95.8	PASS	0.3
60	96.0	95.6	PASS	0.4
61	95.9	95.6	PASS	0.3
62	95.9	95.6	PASS	0.3
63	96.0	95.7	PASS	0.3
64	96.3	96.0	PASS	0.3
65	96.5	96.2	PASS	0.3
66	96.7	96.4	PASS	0.3
67	96.8	96.5	PASS	0.3
68	96.9	96.6	PASS	0.3
69	97.0	96.7	PASS	0.3
70	97.2	96.9	PASS	0.3
71	97.3	97.0	PASS	0.3
72	97.4	97.0	PASS	0.4
73	97.4	97.1	PASS	0.3
74	97.5	97.2	PASS	0.3
75	97.6	97.3	PASS	0.3
76	97.7	97.4	PASS	0.3
77	97.8	97.5	PASS	0.3
78	97.9	97.5	PASS	0.4
79	97.9	97.6	PASS	0.3
80	98.0	97.7	PASS	0.3
81	98.1	97.7	PASS	0.4
82	98.1	97.8	PASS	0.3
83	98.1	97.8	PASS	0.3
84	98.1	97.8	PASS	0.3
85	98.2	97.8	PASS	0.4
86	98.0	97.7	PASS	0.3
87	98.0	97.6	PASS	0.4
88	98.0	97.7	PASS	0.3
89	98.1	97.7	PASS	0.4
90	98.1	97.8	PASS	0.3
91	98.3	97.9	PASS	0.4
92	98.4	98.0	PASS	0.4
93	98.5	98.1	PASS	0.4
94	98.5	98.2	PASS	0.3
95	98.6	98.2	PASS	0.4
96	98.6	98.3	PASS	0.3
97	98.7	98.4	PASS	0.3
98	98.9	98.5	PASS	0.4

WGTV-DT (Final DTV TOA) and WGTV-DT (Proposed) Distance to Contour Comparison Chart

99	98.9	98.5	PASS	0.4
100	99.0	98.6	PASS	0.4
101	99.0	98.6	PASS	0.4
102	99.0	98.6	PASS	0.4
103	99.2	98.8	PASS	0.4
104	99.3	98.9	PASS	0.4
105	99.4	99.0	PASS	0.4
106	99.5	99.1	PASS	0.4
107	99.6	99.1	PASS	0.5
108	99.6	99.1	PASS	0.5
109	99.5	99.1	PASS	0.4
110	99.4	98.9	PASS	0.5
111	99.3	98.8	PASS	0.5
112	99.3	98.8	PASS	0.5
113	99.1	98.7	PASS	0.4
114	99.0	98.5	PASS	0.5
115	99.0	98.5	PASS	0.5
116	99.0	98.5	PASS	0.5
117	99.0	98.5	PASS	0.5
118	99.2	98.7	PASS	0.5
119	99.3	98.8	PASS	0.5
120	99.3	98.8	PASS	0.5
121	99.4	98.9	PASS	0.5
122	99.4	98.8	PASS	0.6
123	99.3	98.8	PASS	0.5
124	99.4	98.8	PASS	0.6
125	99.4	98.9	PASS	0.5
126	99.3	98.8	PASS	0.5
127	99.3	98.8	PASS	0.5
128	99.5	98.9	PASS	0.6
129	99.6	99.1	PASS	0.5
130	99.7	99.1	PASS	0.6
131	99.8	99.2	PASS	0.6
132	99.9	99.3	PASS	0.6
133	100.1	99.5	PASS	0.6
134	100.6	99.9	PASS	0.7
135	100.8	100.2	PASS	0.6
136	100.7	100.1	PASS	0.6
137	100.6	99.9	PASS	0.7
138	100.3	99.7	PASS	0.6
139	100.1	99.4	PASS	0.7
140	99.8	99.2	PASS	0.6
141	99.5	98.9	PASS	0.6
142	99.3	98.7	PASS	0.6
143	99.2	98.6	PASS	0.6
144	99.0	98.5	PASS	0.5
145	98.8	98.3	PASS	0.5
146	98.7	98.1	PASS	0.6
147	98.6	98.0	PASS	0.6
148	98.5	98.0	PASS	0.5
149	98.4	97.8	PASS	0.6

WGTV-DT (Final DTV TOA) and WGTV-DT (Proposed) Distance to Contour Comparison Chart

150	98.1	97.6	PASS	0.5
151	98.0	97.5	PASS	0.5
152	98.0	97.5	PASS	0.5
153	98.1	97.6	PASS	0.5
154	98.2	97.7	PASS	0.5
155	98.3	97.8	PASS	0.5
156	98.2	97.7	PASS	0.5
157	98.1	97.6	PASS	0.5
158	97.9	97.4	PASS	0.5
159	97.8	97.3	PASS	0.5
160	97.8	97.3	PASS	0.5
161	97.8	97.3	PASS	0.5
162	97.9	97.4	PASS	0.5
163	97.9	97.5	PASS	0.4
164	98.0	97.5	PASS	0.5
165	98.1	97.7	PASS	0.4
166	98.3	97.8	PASS	0.5
167	98.4	98.0	PASS	0.4
168	98.4	98.0	PASS	0.4
169	98.4	98.0	PASS	0.4
170	98.5	98.1	PASS	0.4
171	98.5	98.1	PASS	0.4
172	98.7	98.3	PASS	0.4
173	98.9	98.5	PASS	0.4
174	99.0	98.5	PASS	0.5
175	99.0	98.5	PASS	0.5
176	99.0	98.6	PASS	0.4
177	98.9	98.5	PASS	0.4
178	98.9	98.5	PASS	0.4
179	98.6	98.2	PASS	0.4
180	98.8	98.4	PASS	0.4
181	99.1	98.7	PASS	0.4
182	99.4	99.0	PASS	0.4
183	99.5	99.1	PASS	0.4
184	99.3	98.9	PASS	0.4
185	99.0	98.6	PASS	0.4
186	98.9	98.5	PASS	0.4
187	98.8	98.4	PASS	0.4
188	98.7	98.3	PASS	0.4
189	98.4	98.0	PASS	0.4
190	98.2	97.8	PASS	0.4
191	97.9	97.6	PASS	0.3
192	97.8	97.4	PASS	0.4
193	97.8	97.4	PASS	0.4
194	97.9	97.5	PASS	0.4
195	97.9	97.5	PASS	0.4
196	97.8	97.5	PASS	0.3
197	97.9	97.5	PASS	0.4
198	98.0	97.6	PASS	0.4
199	98.1	97.7	PASS	0.4
200	98.3	97.9	PASS	0.4

WGTV-DT (Final DTV TOA) and WGTV-DT (Proposed) Distance to Contour Comparison Chart

201	98.6	98.2	PASS	0.4
202	98.8	98.4	PASS	0.4
203	98.9	98.5	PASS	0.4
204	98.9	98.5	PASS	0.4
205	98.8	98.4	PASS	0.4
206	98.7	98.3	PASS	0.4
207	98.6	98.2	PASS	0.4
208	98.5	98.1	PASS	0.4
209	98.4	98.0	PASS	0.4
210	98.3	98.0	PASS	0.3
211	98.3	98.0	PASS	0.3
212	98.3	97.9	PASS	0.4
213	98.3	97.9	PASS	0.4
214	98.2	97.8	PASS	0.4
215	98.1	97.8	PASS	0.3
216	98.2	97.9	PASS	0.3
217	98.3	98.0	PASS	0.3
218	98.4	98.1	PASS	0.3
219	98.4	98.1	PASS	0.3
220	98.4	98.1	PASS	0.3
221	98.4	98.0	PASS	0.4
222	98.2	97.9	PASS	0.3
223	98.0	97.7	PASS	0.3
224	97.9	97.6	PASS	0.3
225	97.9	97.6	PASS	0.3
226	97.8	97.5	PASS	0.3
227	97.7	97.4	PASS	0.3
228	97.7	97.3	PASS	0.4
229	97.6	97.3	PASS	0.3
230	97.6	97.3	PASS	0.3
231	97.5	97.2	PASS	0.3
232	97.5	97.2	PASS	0.3
233	97.3	97.0	PASS	0.3
234	97.1	96.9	PASS	0.2
235	97.0	96.8	PASS	0.2
236	96.9	96.6	PASS	0.3
237	96.7	96.4	PASS	0.3
238	96.5	96.2	PASS	0.3
239	96.3	96.1	PASS	0.2
240	96.2	96.0	PASS	0.2
241	96.3	96.0	PASS	0.3
242	96.3	96.0	PASS	0.3
243	96.2	96.0	PASS	0.2
244	96.2	95.9	PASS	0.3
245	96.2	95.9	PASS	0.3
246	96.0	95.8	PASS	0.2
247	96.0	95.7	PASS	0.3
248	95.9	95.7	PASS	0.2
249	95.8	95.6	PASS	0.2
250	95.7	95.5	PASS	0.2
251	95.7	95.4	PASS	0.3

WGTV-DT (Final DTV TOA) and WGTV-DT (Proposed) Distance to Contour Comparison Chart

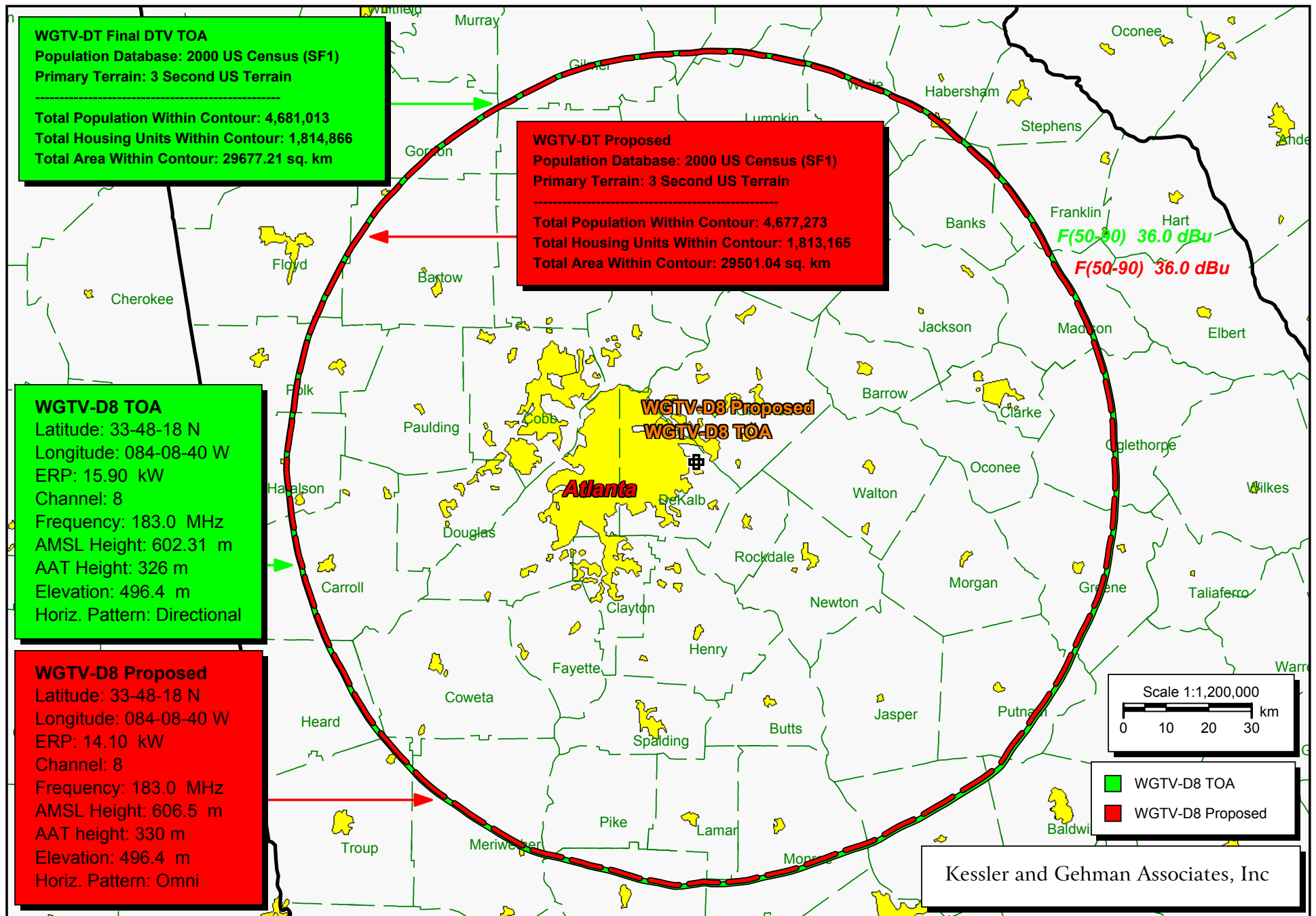
252	95.7	95.4	PASS	0.3
253	95.7	95.5	PASS	0.2
254	95.6	95.4	PASS	0.2
255	95.5	95.3	PASS	0.2
256	95.6	95.4	PASS	0.2
257	95.7	95.5	PASS	0.2
258	95.6	95.4	PASS	0.2
259	95.6	95.4	PASS	0.2
260	95.5	95.4	PASS	0.1
261	95.6	95.4	PASS	0.2
262	95.6	95.4	PASS	0.2
263	95.6	95.4	PASS	0.2
264	95.6	95.4	PASS	0.2
265	95.6	95.4	PASS	0.2
266	95.6	95.5	PASS	0.1
267	95.7	95.6	PASS	0.1
268	95.9	95.8	PASS	0.1
269	95.9	95.8	PASS	0.1
270	95.9	95.7	PASS	0.2
271	95.8	95.7	PASS	0.1
272	95.7	95.6	PASS	0.1
273	95.5	95.4	PASS	0.1
274	95.4	95.2	PASS	0.2
275	95.2	95.1	PASS	0.1
276	95.1	95.0	PASS	0.1
277	95.1	94.9	PASS	0.2
278	95.1	94.9	PASS	0.2
279	95.1	95.0	PASS	0.1
280	95.2	95.0	PASS	0.2
281	95.2	95.1	PASS	0.1
282	95.2	95.1	PASS	0.1
283	95.2	95.1	PASS	0.1
284	95.2	95.1	PASS	0.1
285	95.2	95.1	PASS	0.1
286	95.3	95.2	PASS	0.1
287	95.3	95.3	PASS	0.0
288	95.3	95.3	PASS	0.0
289	95.3	95.2	PASS	0.1
290	95.3	95.2	PASS	0.1
291	95.2	95.1	PASS	0.1
292	95.1	95.0	PASS	0.1
293	95.1	95.0	PASS	0.1
294	95.0	95.0	PASS	0.0
295	95.0	94.9	PASS	0.1
296	94.9	94.8	PASS	0.1
297	94.9	94.8	PASS	0.1
298	94.9	94.8	PASS	0.1
299	94.9	94.8	PASS	0.1
300	95.0	94.9	PASS	0.1
301	95.0	94.9	PASS	0.1
302	95.1	95.0	PASS	0.1

WGTV-DT (Final DTV TOA) and WGTV-DT (Proposed) Distance to Contour Comparison Chart

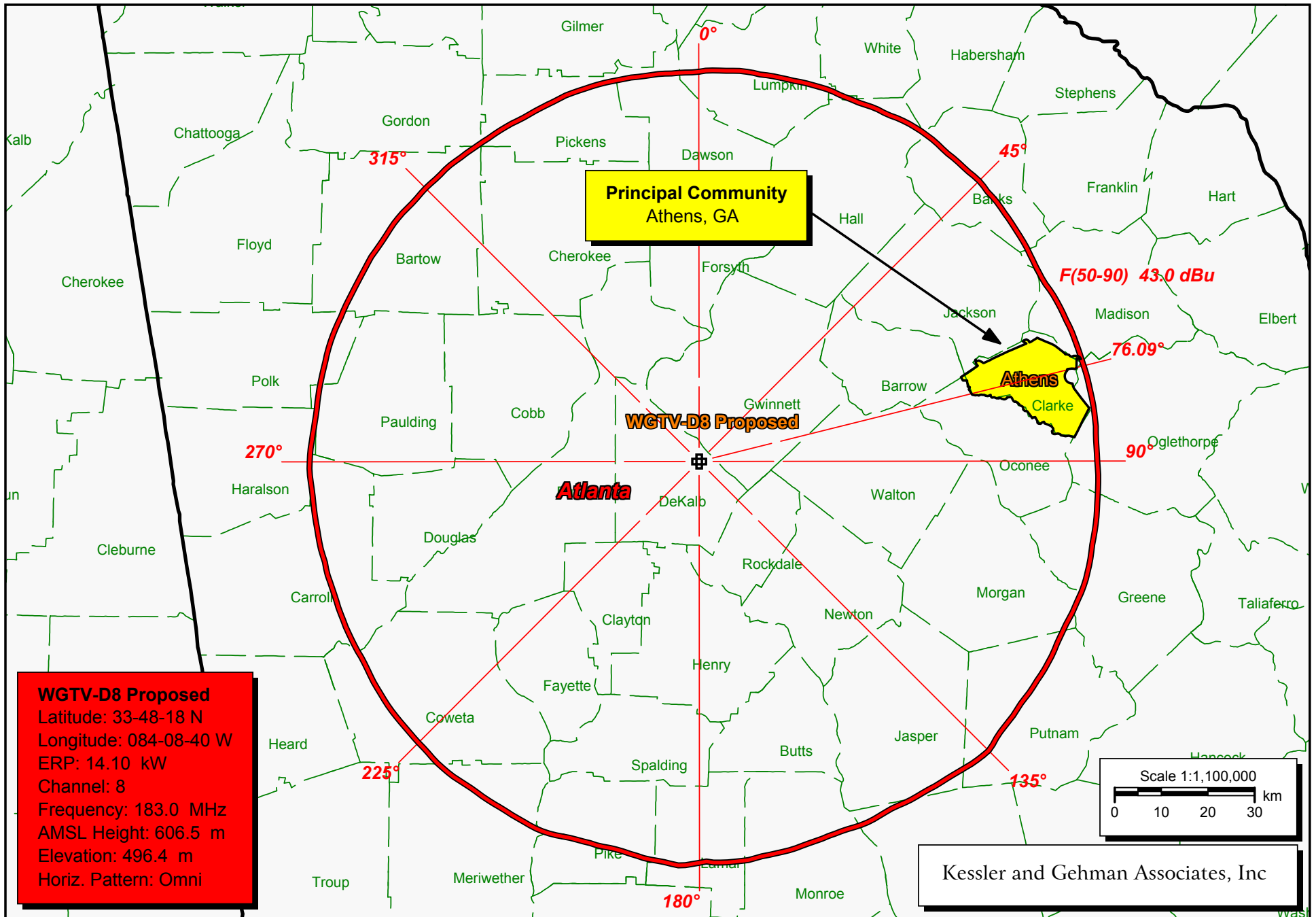
303	95.0	94.9	PASS	0.1
304	94.9	94.9	PASS	0.0
305	95.0	94.9	PASS	0.1
306	95.0	94.9	PASS	0.1
307	95.1	95.1	PASS	0.0
308	95.2	95.1	PASS	0.1
309	95.2	95.1	PASS	0.1
310	95.1	95.1	PASS	0.0
311	95.0	95.0	PASS	0.0
312	94.9	94.9	PASS	0.0
313	94.9	94.9	PASS	0.0
314	95.0	95.0	PASS	0.0
315	95.1	95.0	PASS	0.1
316	95.0	95.0	PASS	0.0
317	95.0	94.9	PASS	0.1
318	95.0	95.0	PASS	0.0
319	95.1	95.1	PASS	0.0
320	95.1	95.1	PASS	0.0
321	95.1	95.0	PASS	0.1
322	95.0	94.9	PASS	0.1
323	95.0	94.9	PASS	0.1
324	95.0	94.9	PASS	0.1
325	95.0	94.9	PASS	0.1
326	94.9	94.9	PASS	0.0
327	94.9	94.8	PASS	0.1
328	95.0	94.9	PASS	0.1
329	95.0	95.0	PASS	0.0
330	95.1	95.0	PASS	0.1
331	95.1	95.0	PASS	0.1
332	95.0	94.9	PASS	0.1
333	95.0	94.9	PASS	0.1
334	95.1	95.0	PASS	0.1
335	95.2	95.1	PASS	0.1
336	95.2	95.2	PASS	0.0
337	95.3	95.3	PASS	0.0
338	95.4	95.4	PASS	0.0
339	95.6	95.5	PASS	0.1
340	95.8	95.7	PASS	0.1
341	95.8	95.8	PASS	0.0
342	95.9	95.8	PASS	0.1
343	95.9	95.8	PASS	0.1
344	95.9	95.9	PASS	0.0
345	96.0	95.9	PASS	0.1
346	96.0	95.9	PASS	0.1
347	96.0	95.9	PASS	0.1
348	95.9	95.8	PASS	0.1
349	95.9	95.8	PASS	0.1
350	95.9	95.8	PASS	0.1
351	95.8	95.7	PASS	0.1
352	95.8	95.7	PASS	0.1
353	95.8	95.7	PASS	0.1

WGTV-DT (Final DTV TOA) and WGTV-DT (Proposed) Distance to Contour Comparison Chart

354	95.9	95.7	PASS	0.2
355	95.8	95.7	PASS	0.1
356	95.7	95.6	PASS	0.1
357	95.7	95.6	PASS	0.1
358	95.8	95.6	PASS	0.2
359	95.7	95.6	PASS	0.1



WGTV-DT Final DTV TOA Population and WGTV-DT Proposed Population



Proposed WGTV-DT Channel 8 Post-Transition Facility's Principal Community Contour

EXHIBIT 13