

**Engineering Statement  
In Support of an  
Application for a Construction Permit  
WGPB(FM), Rome, GA**

**WGPB Channel Spacing Study  
(Using Proposed Tower Site Reference)**

REFERENCE		CLASS = C3	DISPLAY DATES
34 15 03.0 N.			DATA 12-03-12
84 59 05.0 W.	Current	Spacings to 3rd Adj.	SEARCH 12-03-12
----- Channel 249 - 97.7 MHz -----			

Call	Channel	Location	Azi	Dist	FCC	Margin
------	---------	----------	-----	------	-----	--------

WGPB	LIC-Z	249C3	Rome	GA	265.5	22.66	152.5	-129.8
------	-------	-------	------	----	-------	-------	-------	--------

Of no concern:  
Licensed coordinates of WGPB.

WUMJ	LIC	248C3	Fayetteville	GA	156.2	92.05	98.5	-6.5
------	-----	-------	--------------	----	-------	-------	------	------

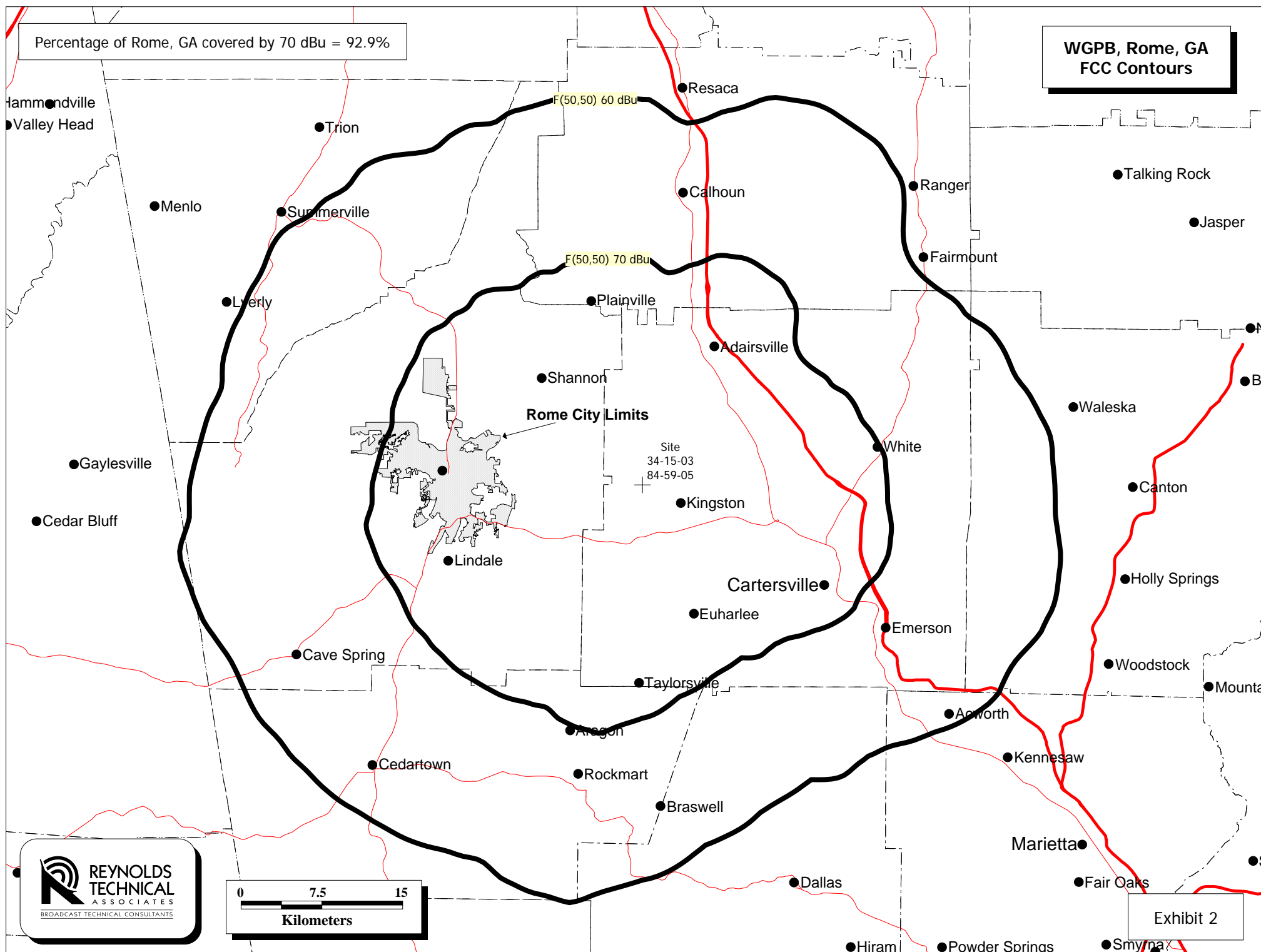
Of concern:  
Protection afforded via §73.215.

WZZN	LIC-N	249A	Union Grove	AL	279.0	144.21	141.5	2.7
WSRV	APP	246C0	Gainesville	GA	99.3	90.08	86.5	3.6
WSRV	LIC	246C	Gainesville	GA	97.3	104.70	95.5	9.2
WVOK-FM	LIC	250A	Oxford	AL	229.8	107.65	88.5	19.2
AL2364	RSV-A	249C2	Lexington	GA	101.7	208.61	176.5	32.1
Reallot from 249C3 @ Eatonton, GA. Alternate site								
AL8333	VAC	250A	Englewood	TN	15.7	126.93	88.5	38.4
Counterproposal								
WMGZ	LIC	249C3	Eatonton	GA	121.3	191.21	152.5	38.7
WMGZ	RSV-A	249C2	Washington	GA	104.8	217.01	176.5	40.5
One Step Application								
WMGZ	APP	249C2	Washington	GA	104.8	217.01	176.5	40.5
WJXB-FM	LIC	248C	Knoxville	TN	25.8	217.45	175.5	42.0
WUUQ	LIC	247C2	South Pittsburg	TN	323.7	99.70	55.5	44.2
WYMA-LP	LIC	250L1	Calhoun	TN	11.4	114.14	66.5	47.6
WKKR	LIC	249A	Auburn	AL	190.9	190.38	141.5	48.9
WKEA-FM	LIC-Z	252C3	Scottsboro	AL	290.3	91.73	42.5	49.2

-----  
RSV-R = reserved - needs protection, RSV-A = allocation.

Percentage of Rome, GA covered by 70 dBu = 92.9%

**WGPB, Rome, GA  
FCC Contours**



**WGPB, Rome, GA  
WUMJ, Fayetteville, GA  
Protected and Interfering  
FCC Contours**

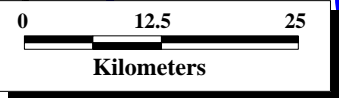
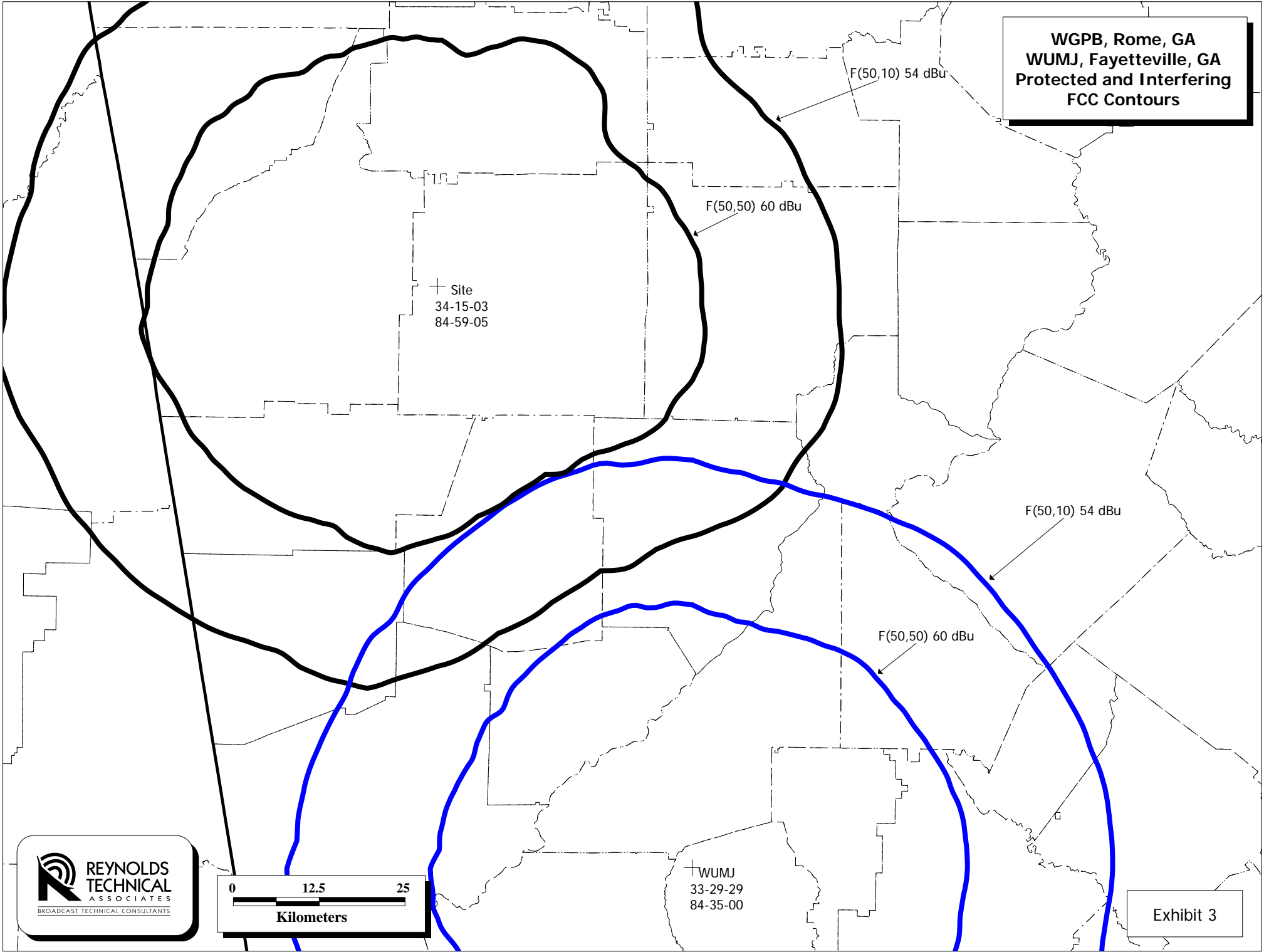


Exhibit 3

WGPB, Rome, GA  
WUMJ, Fayetteville, GA  
Protected and Interfering  
FCC Contours (Zoomed View)

WGPB F(50,50) 60 dBu

WUMJ F(50,10) 54 dBu

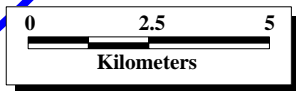
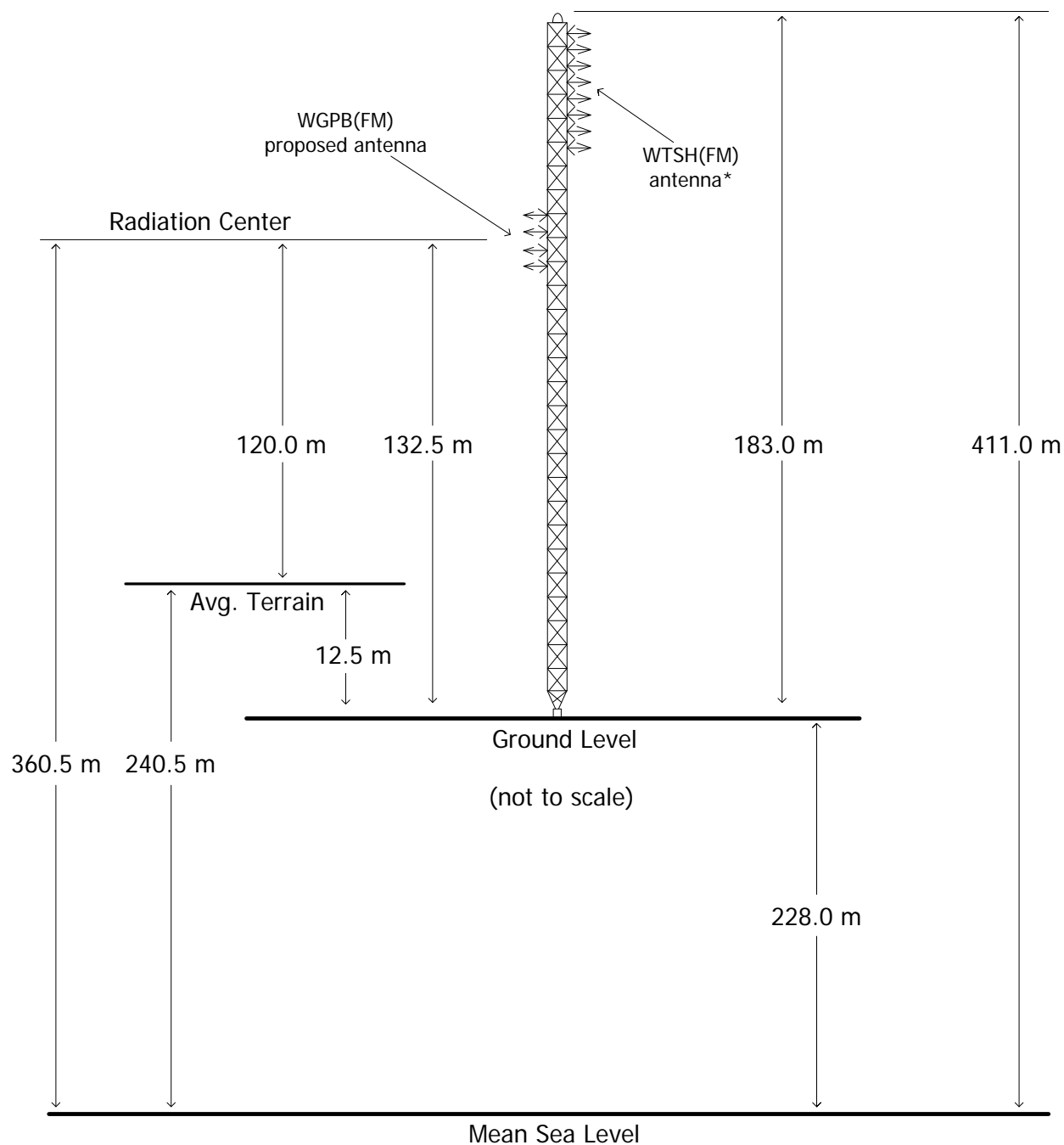


Exhibit 3(a)

**WGPB, Rome, GA  
Tower Vertical Sketch**



NAD 27  
Site Coordinates:  
34° 15' 03"  
84° 59' 05"

ASRN: 1019058

\* The WTSH(FM) 8-bay antenna is 171 meters AGL.