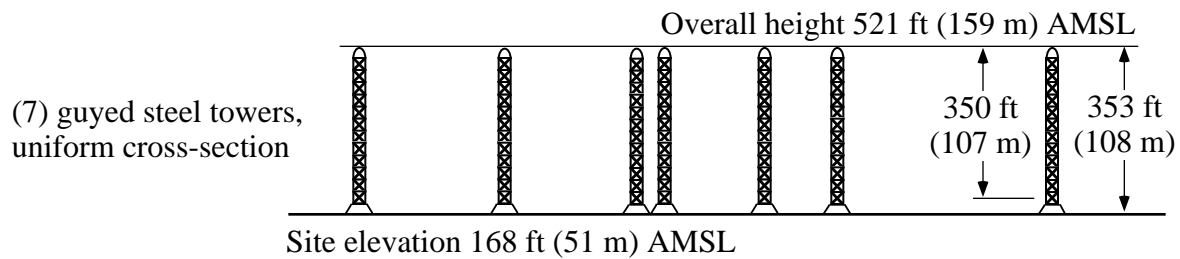
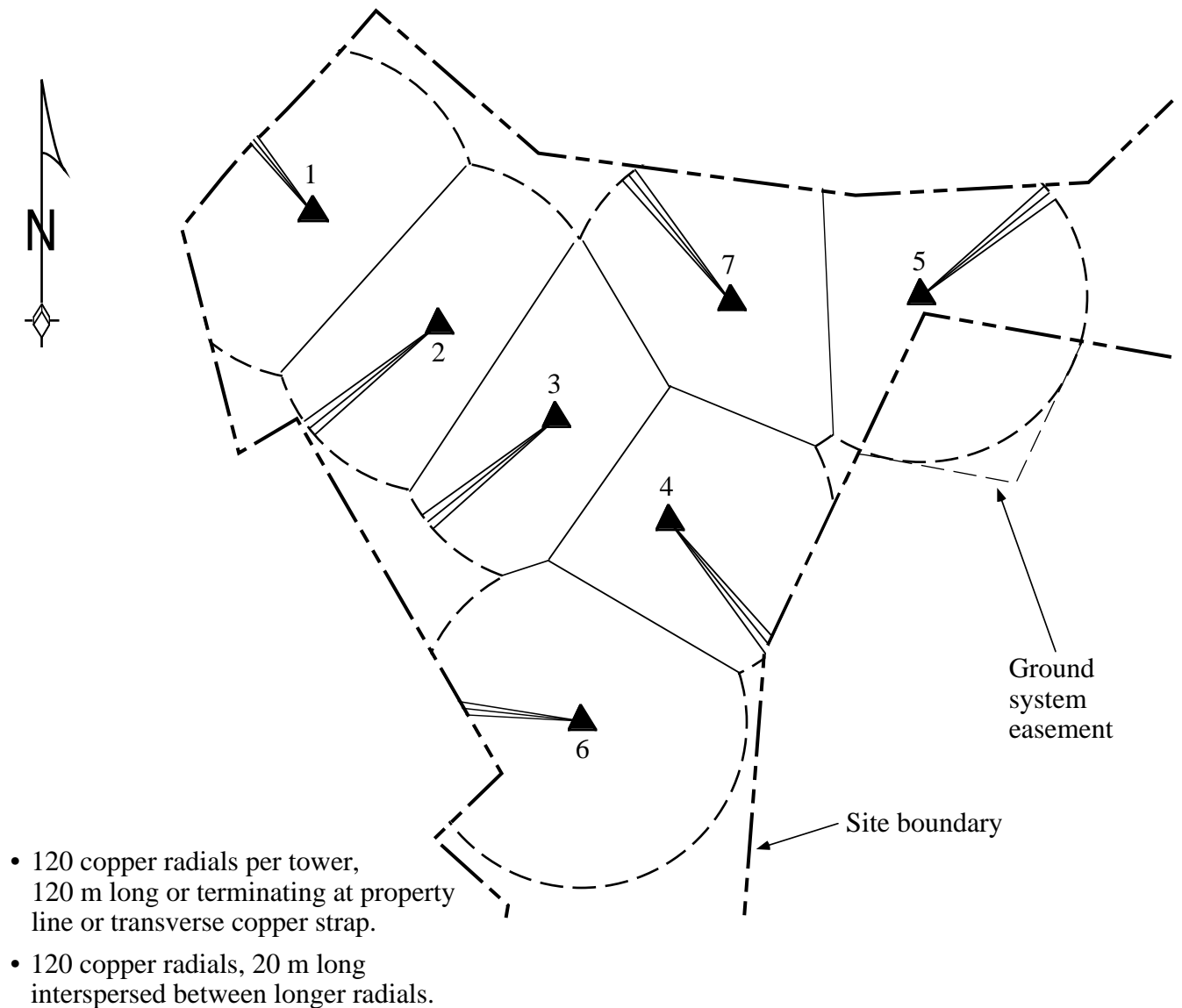


Radio Station WSNR • 620 kHz, Class B • Jersey City, New Jersey

Proposed Antenna System



Towers to be painted and lighted in accordance with FAA requirements.

Geographical Coordinates (NAD27)

40° 50' 52" N
74° 20' 22" W



HAMMETT & EDISON, INC.
CONSULTING ENGINEERS
SAN FRANCISCO

011121
Exhibit 10A

Radio Station WSNR • 620 kHz, Class B • Jersey City, New Jersey

Site Photographs (1 of 2)



View looking North



View looking Northeast



View looking East



View looking Southeast

Photographs taken November 18, 2001



HAMMETT & EDISON, INC.
CONSULTING ENGINEERS
SAN FRANCISCO

011121
Exhibit 10C1

Radio Station WSNR • 620 kHz, Class B • Jersey City, New Jersey

Site Photographs (2 of 2)



View looking South



View looking Southwest



View looking West



View looking Northwest

Photographs taken November 18, 2001

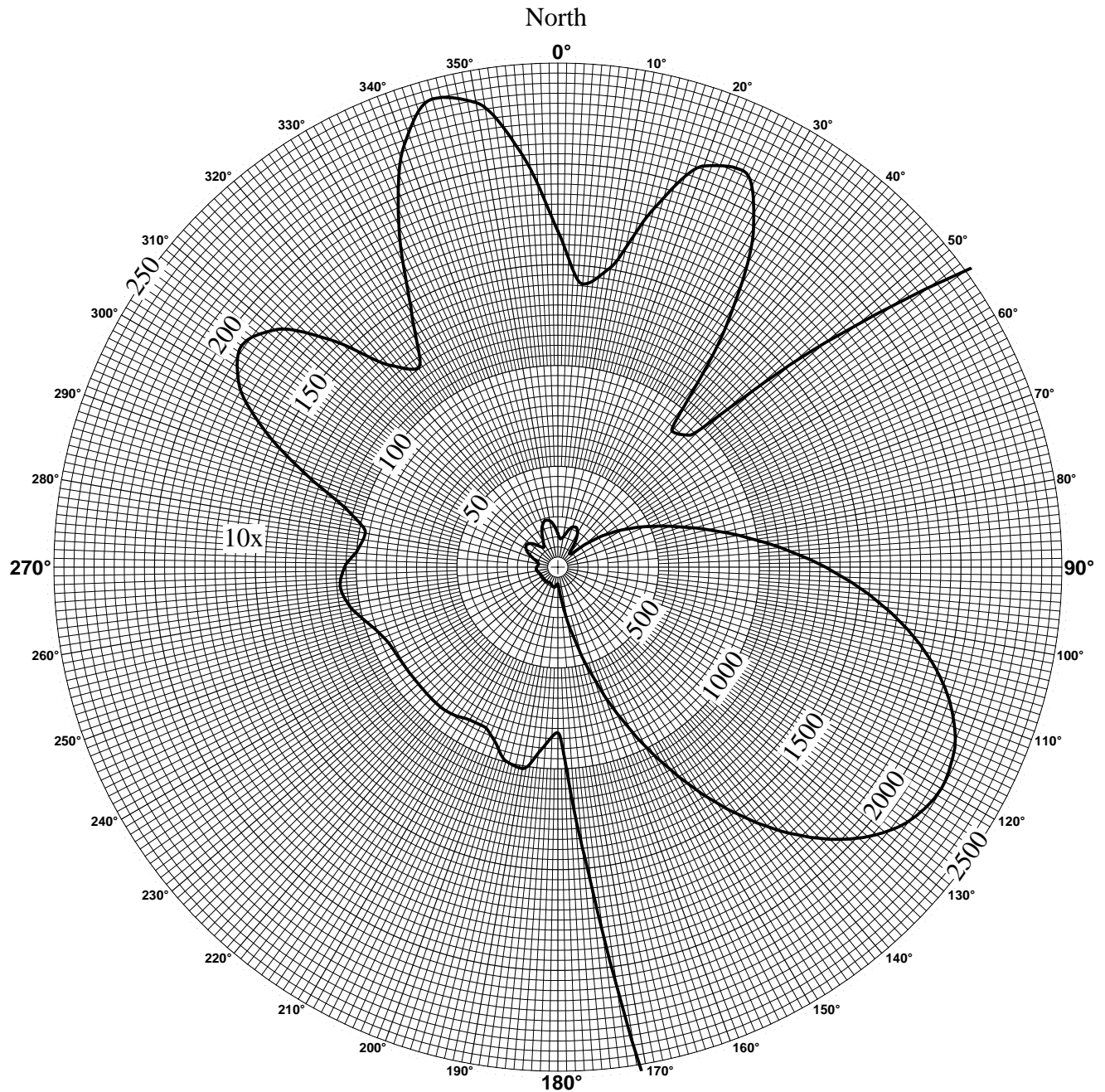


HAMMETT & EDISON, INC.
CONSULTING ENGINEERS
SAN FRANCISCO

011121
Exhibit 10C2

Radio Station WSNR • 620 kHz, Class B • Jersey City, New Jersey

Proposed Daytime Standard Pattern (mV/m @ 1 km) FCC Form 301 §III-A, Question 7.



Standard Pattern Calculations

Theo. RMS = 789.8 mV/m @ 1 km
 k Factor = 586.2
 ERSS = 2891.5 mV/m @ 1 km
 Nominal power = 8.5 kW
 Q = 72.29 mV/m @ 1 km
 Standard RMS = 832.8 mV/m @ 1 km

Operating Parameters

Twr	Height	Bearing	Dist.	Field	Phase
1	89.4°	0.0°T	0.0°	1.000	0.0°
2	99.4	131.4	91.6	2.983	-176.6
3	84.4	130.0	172.0	3.831	+8.2
4	84.4	130.9	253.9	2.530	-156.2
5	99.4	97.8	331.1	0.597	-150.6
6	79.4	152.2	309.8	0.510	-82.8
7	79.4	101.9	231.4	0.514	-106.7



HAMMETT & EDISON, INC.
 CONSULTING ENGINEERS
 SAN FRANCISCO

011121
 Exhibit 10D1

Radio Station WSNR • 620 kHz, Class B • Jersey City, New Jersey

Proposed Daytime Standard Pattern (mV/m @ 1 km)

Az	El: 0	5	10	15	20	25	30	35	40	45	50	55	60
0	166.7	172.4	189.4	216.3	250.4	288.2	325.1	357.2	380.9	393.9	394.7	382.9	358.7
5	140.9	144.8	156.9	177.6	206.0	239.7	275.4	309.3	338.0	358.4	368.3	365.7	349.7
10	151.0	150.6	150.8	155.7	169.2	193.1	225.3	261.3	296.3	325.7	345.4	352.1	343.6
15	184.1	179.7	168.1	153.8	145.3	152.6	178.9	218.0	260.9	299.9	329.1	344.0	341.6
20	211.7	204.9	185.6	157.5	129.4	118.7	140.2	185.2	237.4	285.5	322.3	343.0	344.3
25	217.1	209.0	185.6	150.2	111.0	90.6	116.5	171.5	231.8	286.0	327.0	350.0	352.2
30	194.1	185.6	161.2	124.3	85.2	76.7	120.3	183.7	247.4	302.7	343.3	365.0	365.1
35	145.1	137.4	115.6	86.1	70.4	99.1	156.3	220.7	282.1	333.7	370.1	387.1	382.4
40	88.0	83.8	75.7	78.7	107.2	156.2	214.9	275.3	330.8	375.6	404.8	414.8	403.3
45	92.5	96.8	111.8	140.0	181.1	231.5	286.5	340.5	388.3	424.6	445.1	446.3	426.7
50	173.3	179.5	198.1	228.3	268.4	315.1	364.2	411.0	450.3	477.4	488.3	480.1	451.7
55	270.6	276.7	294.4	322.7	359.4	401.1	443.8	482.9	513.5	531.2	532.4	514.7	477.2
60	370.5	376.1	392.3	417.9	450.4	486.7	522.7	554.0	575.9	584.4	576.0	548.8	502.4
65	475.4	480.1	493.9	515.5	542.7	572.3	600.7	623.5	636.5	635.6	617.9	581.6	526.6
70	594.3	597.6	607.2	622.3	641.2	661.3	679.6	692.2	695.0	684.4	657.3	612.2	549.2
75	737.5	738.5	741.4	746.2	752.3	758.4	762.6	761.7	752.3	730.7	693.9	640.2	569.7
80	910.3	908.1	901.7	892.2	880.6	867.3	852.2	833.7	808.9	774.5	727.4	665.2	587.7
85	1110.1	1104.1	1086.6	1059.6	1026.0	988.6	949.3	908.6	865.1	816.0	757.5	686.9	603.0
90	1327.6	1317.3	1287.6	1241.5	1183.4	1118.6	1051.5	985.3	920.3	854.4	783.9	705.0	615.3
95	1548.8	1534.3	1492.2	1426.6	1343.5	1250.2	1153.9	1060.4	972.3	888.7	805.9	719.1	624.4
100	1757.9	1739.5	1685.8	1601.8	1494.8	1374.2	1249.6	1129.2	1018.3	917.3	822.7	728.7	630.1
105	1939.5	1917.6	1853.8	1753.5	1625.5	1480.6	1330.7	1186.2	1054.5	937.9	833.0	733.4	632.1
110	2079.9	2055.2	1983.1	1869.7	1724.7	1560.3	1389.8	1225.7	1077.4	948.4	836.0	732.7	630.4
115	2167.9	2141.2	2063.3	1940.6	1783.6	1605.4	1420.7	1243.2	1083.8	947.1	830.6	726.3	624.9
120	2196.2	2168.4	2087.3	1959.6	1796.3	1611.0	1419.0	1235.3	1071.4	932.6	816.4	714.1	615.6
125	2161.1	2133.2	2051.7	1923.6	1759.8	1574.3	1382.9	1200.6	1039.3	904.5	793.3	696.4	602.8
130	2063.5	2036.3	1957.2	1833.1	1674.7	1496.1	1312.6	1139.5	988.2	863.5	761.9	673.5	586.8
135	1908.2	1882.7	1808.6	1692.6	1545.1	1379.7	1211.4	1054.7	920.1	811.3	723.6	646.2	568.1
140	1704.3	1681.2	1614.3	1509.9	1378.0	1231.4	1084.6	950.6	838.7	750.6	680.0	615.8	547.1
145	1464.2	1444.1	1386.0	1295.9	1183.2	1060.1	939.5	833.4	748.7	684.8	633.4	583.2	524.7
150	1202.9	1186.2	1138.0	1063.9	972.8	876.0	785.3	710.6	656.0	617.8	586.1	549.9	501.3
155	937.2	923.9	885.8	828.3	759.7	690.7	631.9	590.5	566.7	553.5	540.2	516.9	477.5
160	683.7	673.5	645.0	603.4	557.1	516.3	489.9	481.5	486.6	495.4	497.5	485.0	453.7
165	457.6	450.2	429.9	402.7	377.5	364.5	369.9	391.4	420.1	445.5	458.9	454.6	430.1
170	272.1	266.7	252.8	237.9	233.1	247.6	281.3	325.3	369.1	404.2	424.4	425.9	407.0
175	139.8	135.5	126.1	122.6	139.0	177.5	228.8	282.9	332.0	370.3	393.5	398.5	384.2
180	82.1	79.0	74.6	81.9	110.3	154.6	206.0	257.8	304.4	341.3	364.8	372.1	361.7
185	90.4	89.5	89.8	98.3	120.5	155.1	196.8	240.4	281.1	314.6	337.3	346.3	339.5
190	101.4	101.8	104.3	112.5	129.3	155.2	187.7	223.2	257.9	288.0	310.0	320.7	317.5
195	99.5	100.5	104.2	112.3	126.4	147.0	173.0	202.6	232.8	260.5	282.5	295.3	296.0
200	91.8	92.9	96.4	103.3	114.7	131.2	152.6	177.9	205.3	231.9	254.8	270.3	275.1
205	87.1	87.5	89.1	92.7	99.8	111.5	128.6	150.7	176.3	203.0	227.6	246.3	255.4
210	87.5	87.0	85.8	85.0	86.3	92.0	104.1	123.1	147.7	175.1	201.9	224.0	237.3
215	89.6	88.5	85.4	81.0	77.0	76.3	82.7	98.2	121.8	150.3	179.4	204.6	221.5
220	90.6	89.3	85.6	79.9	73.1	67.7	68.5	80.1	102.4	131.3	162.0	189.4	209.0
225	90.4	89.4	86.2	81.1	74.4	68.1	66.2	74.2	93.9	121.4	151.8	179.8	200.4
230	90.2	89.6	87.6	84.4	80.1	76.2	75.6	82.3	98.7	122.9	150.5	176.6	196.4
235	90.4	90.3	89.9	89.2	88.7	89.2	92.3	100.4	114.8	135.0	158.2	180.4	197.1
240	90.8	91.2	92.5	95.0	98.8	104.5	112.5	123.5	137.8	154.9	173.4	190.4	202.5
245	91.7	92.7	95.8	101.3	109.7	120.8	134.1	148.8	164.3	179.8	194.0	205.5	212.0
250	94.6	95.9	100.2	108.4	120.9	137.3	155.9	174.9	192.5	207.3	218.3	224.5	224.8
255	99.9	101.1	105.6	115.4	131.5	152.9	177.0	200.7	221.1	236.2	244.6	245.9	240.2
260	105.6	106.3	110.1	120.5	139.7	166.3	196.4	225.4	249.3	265.3	271.9	268.9	257.2
265	108.4	108.2	110.3	120.8	143.5	176.3	213.4	248.4	276.5	294.1	299.4	292.6	275.3
270	105.8	104.3	103.8	114.3	141.9	182.5	227.7	269.7	302.6	322.2	326.6	316.4	293.7
275	99.6	96.0	91.3	101.3	135.5	185.6	240.0	289.5	327.4	349.3	353.1	339.7	312.1
280	97.0	90.6	78.9	86.4	127.9	188.2	251.8	308.6	351.4	375.3	378.6	362.2	329.9
285	107.6	98.8	79.5	80.1	125.5	193.5	264.8	327.8	374.7	400.3	402.9	383.6	346.9
290	131.9	121.9	98.8	91.7	133.3	204.4	280.5	348.0	397.7	424.3	425.6	403.5	362.6
295	160.5	150.2	126.4	115.6	151.2	221.3	299.4	369.3	420.5	447.0	446.7	421.6	376.9
300	182.8	172.9	150.4	140.6	173.9	242.5	321.0	391.5	442.7	468.2	465.8	437.6	389.3
305	191.5	182.7	163.9	160.0	196.6	265.7	344.0	413.9	463.9	487.3	482.3	451.2	399.7
310	183.1	176.3	164.5	172.1	217.2	289.1	367.3	435.6	483.2	503.9	496.0	461.9	407.8
315	159.4	156.2	156.2	180.4	236.8	312.2	389.7	455.5	499.9	517.3	506.2	469.5	413.4
320	131.0	133.7	149.9	191.9	257.7	335.1	410.5	472.6	512.9	526.5	512.4	473.6	416.3
325	120.7	129.7	159.8	212.4	281.6	357.2	428.5	485.6	521.2	530.9	514.1	474.0	416.5
330	144.9	155.9	188.7	241.2	306.9	377.0	442.0	493.1	523.5	529.6	511.0	470.5	413.9
335	186.6	196.2	225.0	271.1	329.2	391.3	448.7	493.3	519.0	522.2	502.6	463.1	408.6
340	222.8	230.7	254.4	293.0	342.6	396.3	446.2	484.9	506.6	508.1	489.1	451.9	401.0
345	240.4	246.9	266.8	299.5	342.0	388.7	432.5	466.7	486.0	487.4	470.6	437.4	391.5
350	233.9	239.8	257.7	287.0	325.1	367.1	406.9	438.5	457.3	460.6	447.8	420.3	380.7
355	205.6	211.4	228.8	256.9	292.9	332.4	370.2	401.3	421.7	428.8	422.0	401.7	369.4



Radio Station WSNR • 620 kHz, Class B • Jersey City, New Jersey

Distance to Proposed Daytime Contours

<u>Azimuth</u>	<u>5 mV/m</u>	<u>2 mV/m</u>	<u>0.5 mV/m</u>	<u>Azimuth</u>	<u>5 mV/m</u>	<u>2 mV/m</u>	<u>0.5 mV/m</u>
0°T	14.42 km	24.15 km	46.76 km	45°T	12.31 km	23.68 km	52.02 km
1	14.03	23.60	45.86	46	13.64	25.77	55.48
2	13.68	23.10	45.03	47	15.08	28.02	59.16
3	13.38	22.66	44.31	48	16.61	30.35	62.90
4	13.15	22.32	43.75	49	18.11	32.61	64.81
5	12.99	22.10	43.38	50	19.58	34.80	66.14
6	12.93	22.01	43.23	51	21.02	36.92	67.42
7	12.97	22.06	43.31	52	22.44	38.96	68.66
8	13.09	22.24	43.61	53	23.77	40.87	69.90
9	13.30	22.54	44.10	54	25.05	42.70	71.08
10	13.57	22.93	44.75	55	26.28	44.44	72.20
11	13.88	23.39	46.71	56	27.50	46.14	73.37
12	14.23	23.89	48.69	57	28.64	47.74	74.40
13	14.59	24.40	50.65	58	29.74	49.28	75.47
14	14.95	24.93	52.61	59	30.81	50.75	76.50
15	15.89	31.49	67.40	60	31.85	52.19	77.50
16	17.33	33.18	69.50	61	32.88	53.61	78.58
17	18.46	34.52	71.23	62	33.88	54.96	79.63
18	19.37	35.61	72.66	63	34.85	56.30	80.66
19	20.13	36.53	73.86	64	35.81	57.52	81.68
20	20.68	37.21	74.77	65	36.77	58.13	82.78
21	21.15	37.78	75.52	66	37.72	58.64	83.79
22	21.54	38.24	76.10	67	38.67	59.24	84.90
23	21.79	38.52	76.45	68	39.65	59.78	85.94
24	21.90	38.63	76.56	69	40.61	60.39	87.06
25	21.93	38.63	76.50	70	41.58	61.01	88.76
26	21.88	38.50	76.24	71	42.55	61.63	147.99
27	21.74	38.25	75.80	72	43.54	62.27	163.88
28	21.46	37.83	75.11	73	44.54	63.00	194.61
29	21.14	37.32	74.28	74	45.55	63.65	222.92
30	20.69	36.64	73.17	75	46.57	64.30	291.50
31	20.14	35.82	71.86	76	47.59	113.22	377.23
32	19.50	34.86	70.33	77	48.64	139.89	405.40
33	18.78	33.77	68.56	78	49.71	156.86	345.86
34	17.96	32.52	66.57	79	50.76	165.58	324.87
35	17.05	31.15	64.34	80	51.82	162.05	373.74
36	16.06	29.62	61.86	81	58.02	158.61	374.65
37	14.97	27.94	59.15	82	68.37	154.07	329.57
38	13.88	26.22	56.31	83	71.83	107.82	185.18
39	12.80	24.49	53.42	84	69.77	105.47	134.21
40	11.77	22.84	50.66	85	67.61	88.56	127.99
41	11.00	21.57	48.48	86	68.73	82.61	116.50
42	10.57	20.86	47.26	87	70.11	82.21	112.26
43	10.69	21.03	47.52	88	69.11	81.06	111.61
44	11.29	22.02	49.22	89	67.83	79.98	111.02

Radio Station WSNR • 620 kHz, Class B • Jersey City, New Jersey

Distance to Proposed Daytime Contours

Azimuth	5 mV/m	2 mV/m	0.5 mV/m	Azimuth	5 mV/m	2 mV/m	0.5 mV/m
90°T	66.87 km	79.20 km	110.72 km	135°T	199.83 km	367.72 km	658.02 km
91	66.13	78.65	110.64	136	211.24	378.47	668.27
92	65.43	78.14	110.60	137	205.97	372.64	661.98
93	64.83	77.72	110.63	138	199.22	365.07	654.11
94	64.84	77.90	111.26	139	194.00	358.98	647.68
95	65.92	79.15	112.93	140	189.95	353.99	642.01
96	65.49	78.90	117.41	141	185.72	348.75	636.02
97	64.89	78.47	144.72	142	181.17	343.29	629.73
98	63.33	77.06	179.53	143	176.46	337.35	623.15
99	61.97	75.85	215.05	144	171.59	331.15	616.27
100	61.49	75.53	233.99	145	166.34	324.64	609.01
101	60.34	74.52	245.67	146	161.03	317.99	601.55
102	59.28	73.59	258.01	147	151.58	306.89	589.40
103	58.73	73.17	272.13	148	140.57	294.22	575.63
104	57.98	72.54	288.77	149	128.89	280.78	560.99
105	57.46	72.15	308.83	150	116.66	266.69	545.70
106	56.83	71.62	327.28	151	103.06	250.94	528.94
107	56.32	71.22	344.32	152	83.45	228.92	505.37
108	55.88	70.87	353.98	153	66.01	206.30	480.96
109	55.30	70.38	356.61	154	63.51	185.82	458.84
110	54.96	70.12	361.52	155	61.12	164.49	435.77
111	54.42	69.66	362.90	156	58.92	143.70	413.07
112	54.16	74.74	368.39	157	57.05	123.84	390.80
113	53.85	78.04	371.83	158	55.13	102.80	367.49
114	53.48	80.63	374.55	159	53.41	83.02	344.64
115	53.24	83.02	376.95	160	51.65	76.57	320.47
116	53.02	106.07	400.12	161	49.70	74.05	293.78
117	57.51	182.22	475.95	162	47.99	71.75	267.01
118	74.74	247.39	540.91	163	45.39	69.13	238.14
119	87.02	259.62	553.12	164	38.74	66.71	215.14
120	100.14	272.92	566.38	165	35.96	63.95	197.78
121	113.20	285.91	579.31	166	34.11	61.30	176.92
122	117.34	289.99	583.34	167	32.21	58.59	134.87
123	116.75	289.28	582.61	168	30.30	55.09	98.81
124	113.97	286.36	579.66	169	28.33	51.52	93.74
125	109.51	281.70	574.98	170	26.37	48.05	88.76
126	104.31	276.26	569.46	171	24.41	44.44	83.60
127	100.87	272.54	565.58	172	22.43	40.88	78.46
128	111.19	282.48	575.29	173	20.50	36.16	73.46
129	121.76	292.69	585.24	174	18.63	33.39	68.36
130	131.67	302.20	594.48	175	16.81	30.67	63.44
131	141.85	311.95	603.90	176	15.17	28.15	59.38
132	158.63	328.23	619.82	177	13.69	25.87	55.67
133	172.47	341.55	632.74	178	12.52	24.01	52.59
134	184.27	352.78	643.55	179	11.65	22.63	50.28

Radio Station WSNR • 620 kHz, Class B • Jersey City, New Jersey

Distance to Proposed Daytime Contours

<u>Azimuth</u>	<u>5 mV/m</u>	<u>2 mV/m</u>	<u>0.5 mV/m</u>	<u>Azimuth</u>	<u>5 mV/m</u>	<u>2 mV/m</u>	<u>0.5 mV/m</u>
180°T	11.14 km	21.82 km	48.93 km	225°T	9.73 km	18.30 km	46.40 km
181	10.98	21.56	48.49	226	9.72	18.13	46.22
182	11.04	21.68	48.73	227	9.72	17.95	46.04
183	11.26	22.06	49.40	228	9.72	17.77	45.86
184	11.56	22.57	50.27	229	9.72	17.60	45.69
185	11.87	23.10	51.20	230	9.72	17.43	45.52
186	12.16	23.59	52.06	231	9.72	17.26	45.35
187	12.40	24.00	52.78	232	9.72	17.25	45.11
188	12.59	24.33	53.34	233	9.72	17.26	44.94
189	12.72	24.56	53.75	234	9.73	17.26	44.69
190	12.73	24.64	53.95	235	9.73	17.27	44.46
191	12.69	24.63	54.00	236	9.73	17.28	44.21
192	12.59	24.53	53.90	237	9.74	17.28	43.96
193	12.44	24.36	53.67	238	9.74	17.29	43.73
194	12.20	24.06	53.29	239	9.75	17.30	43.39
195	11.91	23.70	52.81	240	9.76	17.31	43.07
196	11.71	23.42	52.38	241	9.76	17.32	42.74
197	11.49	23.11	51.90	242	9.77	17.34	42.60
198	11.27	22.78	51.41	243	9.79	17.36	42.48
199	11.05	22.46	50.91	244	9.80	17.38	42.37
200	10.83	22.15	50.42	245	9.83	17.41	42.18
201	10.62	21.86	49.97	246	9.85	17.46	42.01
202	10.44	21.60	49.57	247	9.89	17.51	41.88
203	10.27	21.37	49.23	248	9.93	17.57	41.77
204	10.07	21.12	48.89	249	9.98	17.64	41.69
205	9.95	20.97	48.68	250	10.03	17.73	41.63
206	9.79	20.79	48.47	251	10.10	17.82	41.51
207	9.72	20.71	48.39	252	10.16	17.93	41.51
208	9.59	20.59	48.28	253	10.24	18.04	41.44
209	9.49	20.50	48.22	254	10.32	18.16	41.38
210	9.51	20.42	48.18	255	10.40	18.28	41.25
211	9.54	20.35	48.16	256	10.49	18.40	41.13
212	9.58	20.21	48.07	257	10.57	18.53	41.00
213	9.61	20.14	48.06	258	10.65	18.65	40.86
214	9.64	19.99	47.95	259	10.73	18.76	40.61
215	9.67	19.83	47.84	260	10.80	18.87	40.61
216	9.69	19.58	47.62	261	10.86	18.96	40.49
217	9.71	19.31	47.39	262	10.91	19.03	40.33
218	9.73	19.03	47.12	263	10.94	19.09	40.03
219	9.73	18.97	47.08	264	10.97	19.12	39.77
220	9.74	18.90	47.02	265	10.98	19.14	39.39
221	9.74	18.82	46.95	266	10.97	19.13	38.94
222	9.74	18.66	46.78	267	10.96	19.11	38.44
223	9.74	18.57	46.69	268	10.92	19.05	38.36
224	9.73	18.40	46.50	269	10.87	18.98	38.24



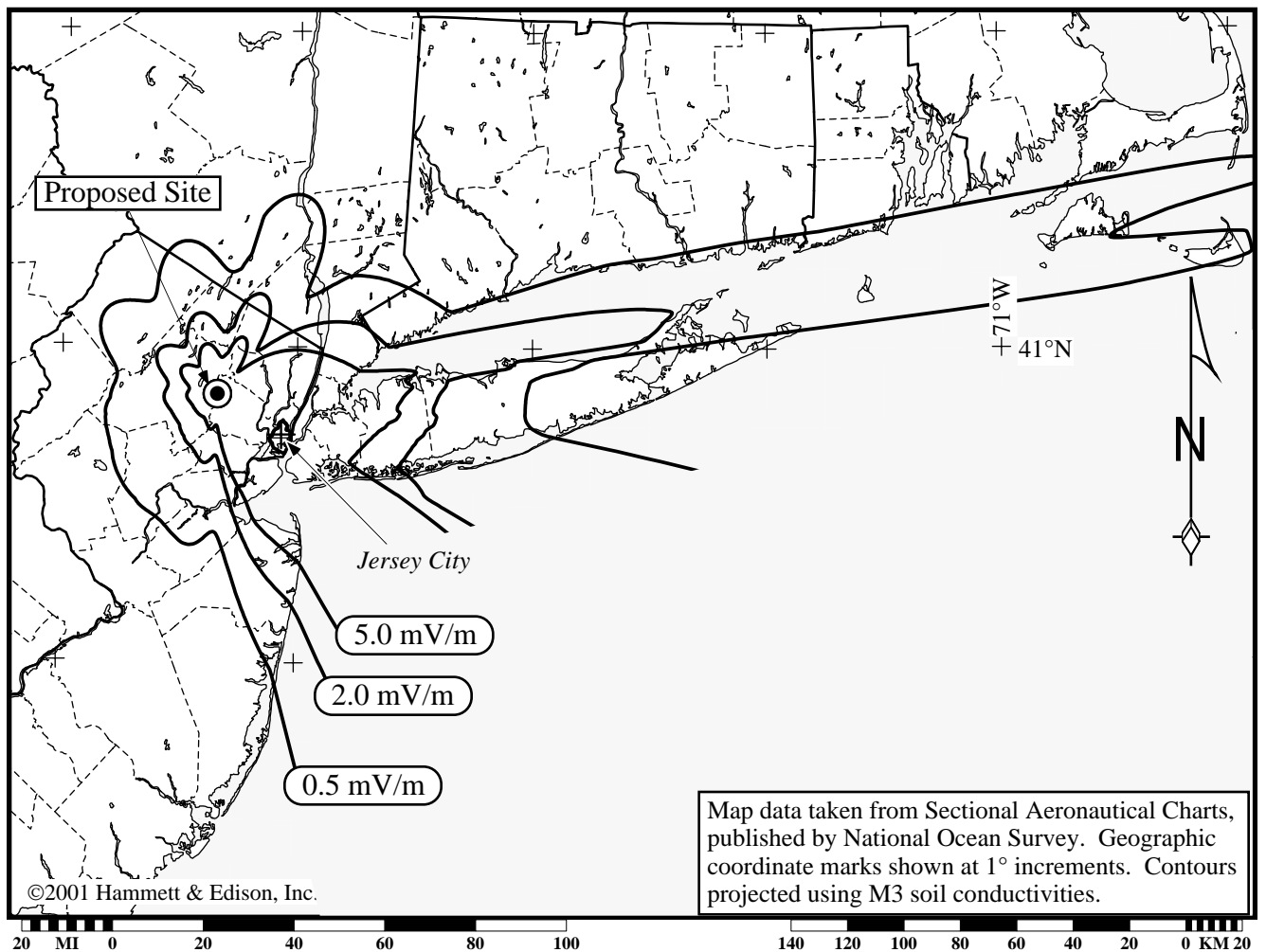
Radio Station WSNR • 620 kHz, Class B • Jersey City, New Jersey

Distance to Proposed Daytime Contours

<u>Azimuth</u>	<u>5 mV/m</u>	<u>2 mV/m</u>	<u>0.5 mV/m</u>	<u>Azimuth</u>	<u>5 mV/m</u>	<u>2 mV/m</u>	<u>0.5 mV/m</u>
270°T	10.81 km	18.89 km	38.08 km	315°T	14.03 km	23.59 km	45.84 km
271	10.74	18.78	37.90	316	13.71	23.13	45.08
272	10.65	18.65	37.69	317	13.38	22.65	44.29
273	10.56	18.52	37.47	318	13.04	22.17	43.49
274	10.47	18.38	37.25	319	12.72	21.69	42.71
275	10.38	18.25	37.03	320	12.41	21.25	41.98
276	10.30	18.13	36.83	321	12.14	20.86	41.33
277	10.24	18.03	36.67	322	11.93	20.55	40.82
278	10.19	17.97	36.56	323	11.79	20.34	40.48
279	10.18	17.95	36.52	324	11.74	20.26	40.35
280	10.20	17.98	36.57	325	11.78	20.32	40.46
281	10.26	18.07	36.72	326	11.92	20.53	40.79
282	10.36	18.22	36.98	327	12.15	20.86	41.34
283	10.51	18.44	37.35	328	12.45	21.31	42.08
284	10.70	18.72	37.81	329	12.82	21.84	42.95
285	10.93	19.07	38.38	330	13.23	22.44	43.93
286	11.19	19.46	39.03	331	13.66	23.07	44.98
287	11.49	19.89	39.75	332	14.11	23.72	46.05
288	11.80	20.35	40.51	333	14.57	24.36	47.11
289	12.13	20.84	41.30	334	15.01	24.99	48.15
290	12.47	21.33	42.12	335	15.43	25.60	49.15
291	12.81	21.82	42.93	336	15.83	26.17	50.09
292	13.14	22.32	43.73	337	16.20	26.70	50.97
293	13.47	22.79	44.52	338	16.55	27.18	51.77
294	13.78	23.24	45.27	339	16.86	27.62	52.49
295	14.08	23.68	45.98	340	17.13	28.00	53.12
296	14.37	24.08	46.64	341	17.36	28.33	53.66
297	14.62	24.44	47.25	342	17.55	28.60	54.12
298	14.86	24.78	47.80	343	17.71	28.82	54.47
299	15.06	25.08	48.29	344	17.82	28.98	54.74
300	15.24	25.33	48.71	345	17.89	29.08	54.90
301	15.39	25.55	49.06	346	17.92	29.12	54.97
302	15.51	25.72	49.34	347	17.90	29.10	54.94
303	15.60	25.84	49.54	348	17.85	29.02	54.81
304	15.65	25.92	49.67	349	17.75	28.88	54.58
305	15.67	25.94	49.72	350	17.61	28.69	54.25
306	15.66	25.93	49.69	351	17.43	28.43	53.84
307	15.61	25.86	49.57	352	17.21	28.13	53.33
308	15.53	25.74	49.38	353	16.96	27.77	52.73
309	15.41	25.57	49.10	354	16.67	27.35	52.04
310	15.26	25.35	48.74	355	16.34	26.89	51.28
311	15.07	25.09	48.30	356	15.99	26.39	50.46
312	14.85	24.77	47.79	357	15.61	25.86	49.57
313	14.61	24.42	47.20	358	15.22	25.30	48.65
314	14.33	24.02	46.55	359	14.82	24.72	47.70

Radio Station WSNR • 620 kHz, Class B • Jersey City, New Jersey

Proposed Daytime Contours

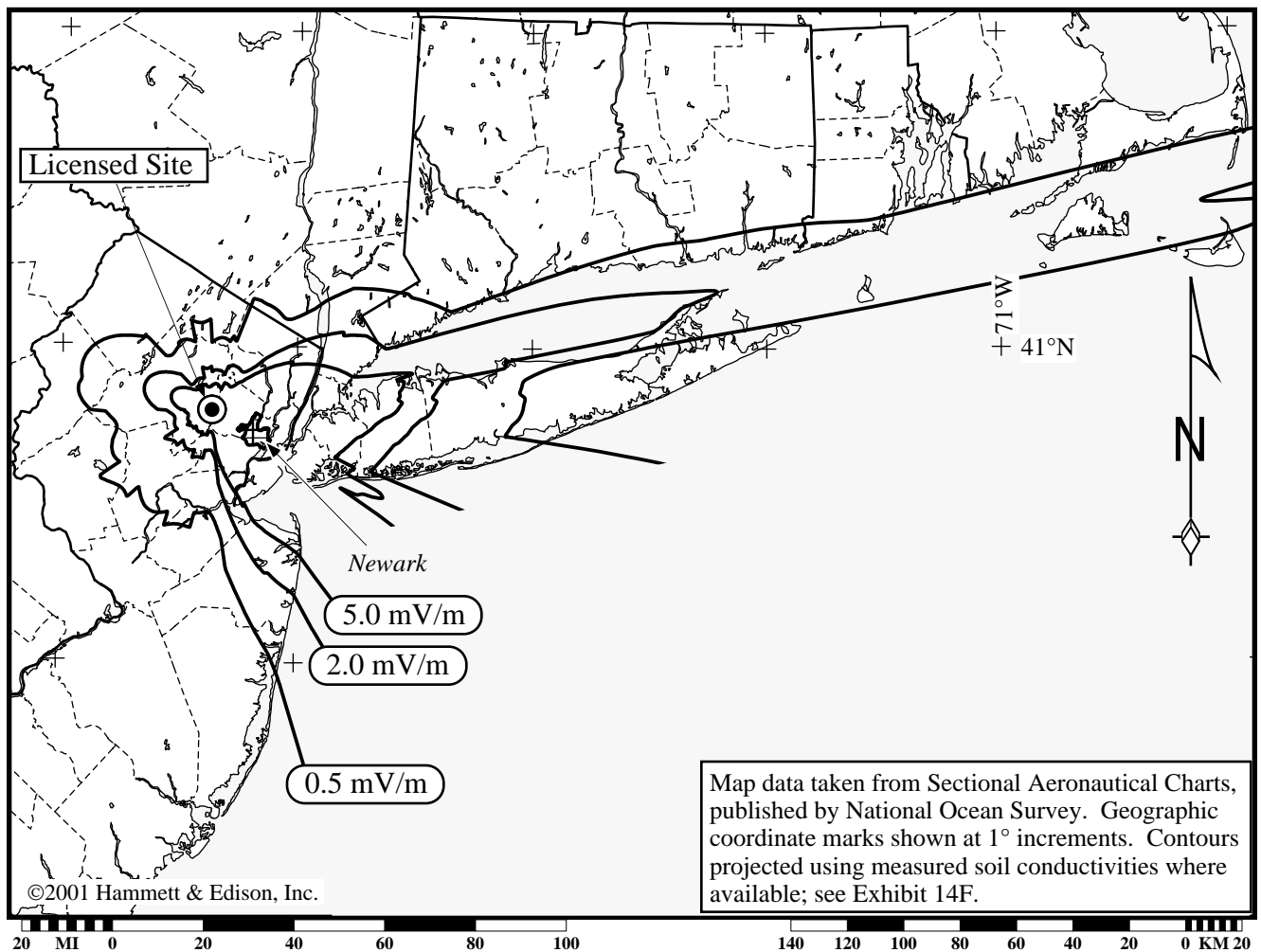


HAMMETT & EDISON, INC.
CONSULTING ENGINEERS
SAN FRANCISCO

011121
Exhibit 10D4

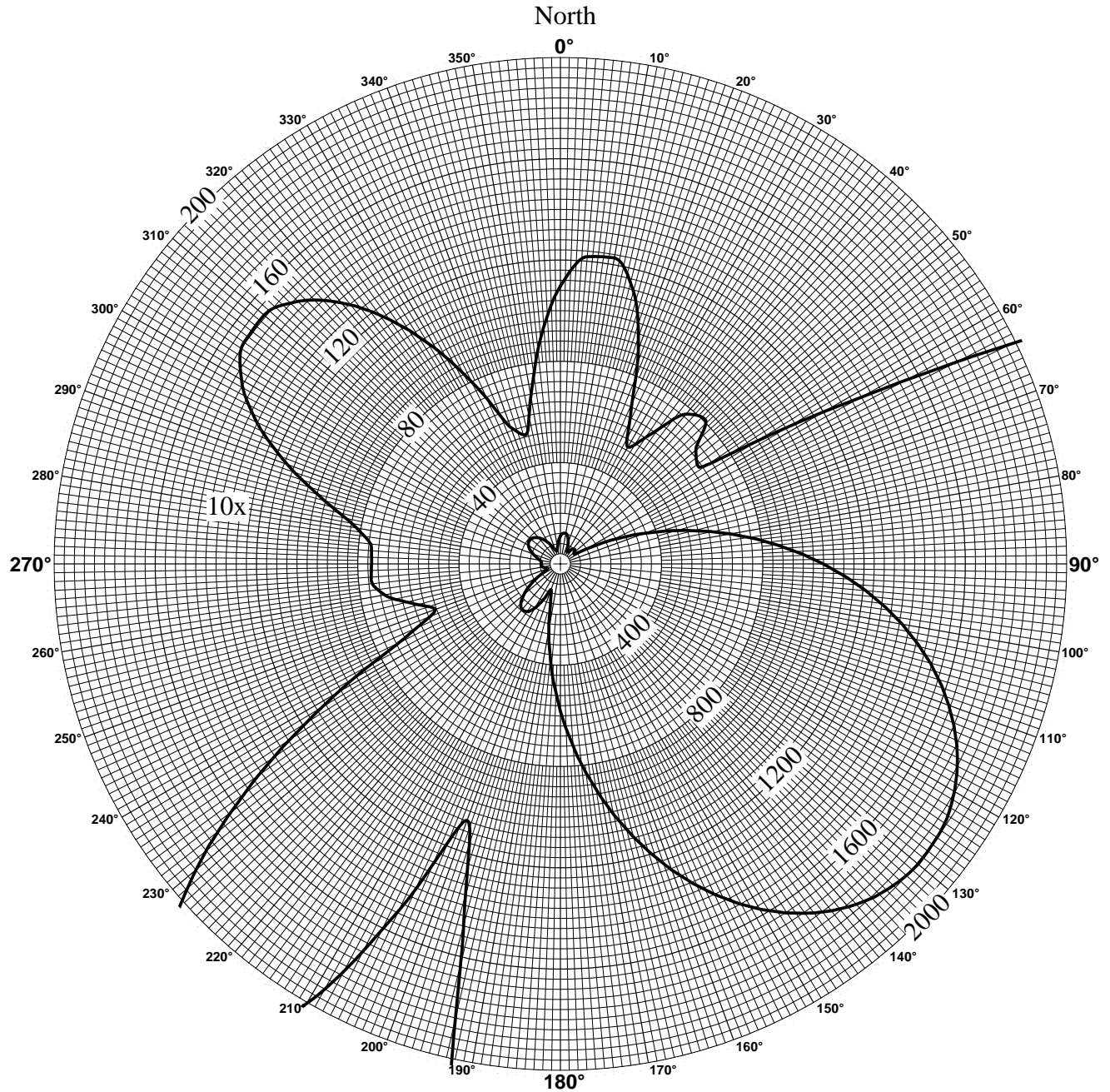
Radio Station WSNR • 620 kHz, Class B • Jersey City, New Jersey

Licensed Daytime Contours



Radio Station WSNR • 620 kHz, Class B • Jersey City, New Jersey

Proposed Nighttime Standard Pattern (mV/m @ 1 km) FCC Form 301 §III-A, Question 7.



Standard Pattern Calculations

Theo. RMS = 738.2 mV/m @ 1 km
 k Factor = 435.2
 ERSS = 1979.6 mV/m @ 1 km
 Nominal power = 5.0 kW
 Q = 49.49 mV/m @ 1 km
 Standard RMS = 776.9 mV/m @ 1 km

Operating Parameters

Twr	Height	Bearing	Dist.	Field	Phase
1	89.4°	0.0°T	0.0°	1.000	0.0°
2	99.4	131.4	91.6	2.728	-153.0
3	84.4	130.0	172.0	3.159	+48.4
4	84.4	130.9	253.9	1.500	-104.7
5	99.4	97.8	331.1	0.125	-63.2



HAMMETT & EDISON, INC.
 CONSULTING ENGINEERS
 SAN FRANCISCO

011121
 Exhibit 10E1

Radio Station WSNR • 620 kHz, Class B • Jersey City, New Jersey

Proposed Nighttime Standard Pattern (mV/m @ 1 km)

Az	El: 0	5	10	15	20	25	30	35	40	45	50	55	60
0	109.7	109.1	107.3	104	98.8	91.4	81.7	70.1	57.4	45.9	38.4	37.6	41.5
5	121.8	120.7	117.1	111.1	102.8	92.2	80.0	67.0	55.0	46.2	43.0	45.0	49.0
10	122.7	121.1	116.4	108.9	98.9	87.1	74.5	62.7	53.7	49.6	50.4	53.9	57.1
15	111.4	109.7	104.8	97.1	87.3	76.6	66.6	59.0	55.6	56.5	60.0	63.6	65.3
20	90.0	88.6	84.5	78.3	71.1	64.5	60.2	59.4	62.0	66.4	70.7	73.5	73.4
25	65.7	64.9	62.6	59.9	57.9	58.0	60.9	66.0	72.2	77.8	81.8	83.0	81.0
30	53.3	53.4	53.7	55.2	58.3	63.5	70.2	77.5	84.3	89.4	92.1	91.6	87.7
35	62.8	63.1	64.4	66.9	70.9	76.5	83.1	89.8	95.6	99.5	100.8	98.9	93.4
40	77.2	77.4	78.4	80.2	83.4	88.0	93.4	99.0	103.8	106.7	107.1	104.2	97.7
45	80.8	81.0	82.0	83.9	87.0	91.5	96.9	102.4	107.2	110.1	110.4	107.3	100.5
50	69.8	70.4	72.1	75.1	79.8	85.7	92.6	99.5	105.5	109.5	110.6	108.2	101.8
55	66.7	67.0	68.1	70.3	74.2	79.8	86.7	94.1	101.0	106.1	108.4	107.1	101.7
60	120.1	118.7	115.0	109.7	104.0	99.4	97.1	97.6	100.2	103.5	105.6	104.9	100.5
65	221.9	218.8	209.6	195.4	177.5	158.1	139.4	123.9	113.3	107.6	105.1	103.0	98.8
70	355.2	350.1	334.9	311.1	280.5	245.6	209.3	175.0	145.8	124.2	110.8	103.3	97.4
75	511.1	503.7	482.2	448.0	403.6	352.4	297.8	244.0	194.9	154.3	125.2	107.5	97.1
80	682.0	672.3	643.9	598.8	540.1	471.8	398.3	324.5	255.2	195.0	148.1	116.7	98.8
85	860.3	848.3	813.1	756.9	683.7	598.0	505.4	411.4	322.0	242.3	177.3	130.7	102.7
90	1038.9	1024.6	982.7	915.8	828.3	725.7	614.2	500.6	391.3	292.7	210.1	148.2	108.9
95	1210.9	1194.5	1146.3	1069.3	968.4	849.7	720.4	588.0	459.9	343.2	244.0	167.5	116.8
100	1370.5	1352.2	1298.3	1212.1	1099.0	965.6	819.8	670.1	524.7	391.4	276.9	187.0	125.4
105	1512.6	1492.6	1433.7	1339.5	1215.6	1069.2	908.9	743.8	583.0	434.9	307.0	205.3	134.0
110	1633.1	1611.7	1548.6	1447.6	1314.6	1157.2	984.6	806.5	632.6	472.0	332.6	221.0	141.6
115	1728.8	1706.2	1639.8	1533.3	1393.0	1226.9	1044.5	855.9	671.5	501.0	352.7	233.3	147.6
120	1797.1	1773.7	1704.7	1594.3	1448.6	1276.0	1086.4	890.3	698.5	520.9	366.2	241.5	151.5
125	1836.0	1812.1	1741.6	1628.6	1479.6	1303.1	1109.1	908.5	712.3	530.7	372.6	245.0	152.9
130	1844.4	1820.3	1749.2	1635.2	1485.0	1307.1	1111.7	909.8	712.4	530.0	371.4	243.6	151.7
135	1821.7	1797.7	1726.9	1613.6	1464.3	1287.7	1093.9	893.9	698.8	518.8	362.6	237.3	147.8
140	1768.1	1744.5	1675.2	1564.1	1418.0	1245.3	1056.2	861.4	671.8	497.3	346.6	226.3	141.4
145	1684.9	1662.1	1595.2	1488.1	1347.3	1181.2	999.7	813.2	632.3	466.4	323.8	211.2	133.1
150	1574.4	1552.8	1489.2	1387.6	1254.3	1097.3	926.2	751.0	581.5	427.1	295.4	192.6	123.5
155	1440.0	1419.8	1360.5	1265.8	1141.9	996.3	838.1	676.7	521.5	380.9	262.4	171.8	113.3
160	1285.9	1267.4	1213.2	1126.8	1013.9	881.6	738.5	593.2	454.4	329.8	226.5	150.0	103.8
165	1117.3	1100.8	1052.3	975.2	874.6	757.3	630.9	503.5	382.8	276.0	189.7	129.1	96.2
170	939.9	925.5	883.2	816.1	728.9	627.7	519.3	411.0	309.7	222.2	154.6	111.5	91.6
175	759.5	747.3	711.6	655.0	581.9	497.4	407.9	319.5	238.8	172.0	124.8	99.7	90.6
180	582.3	572.4	543.4	497.7	438.8	371.6	301.3	233.7	174.7	130.3	104.8	95.5	92.9
185	414.7	407.1	384.9	350.1	305.8	256.1	205.7	160.1	125.0	104.8	98.4	98.4	97.5
190	264.8	259.5	244.2	220.6	191.3	160.2	131.9	111.2	101.4	100.9	104.1	105.8	103.0
195	147.7	145.0	137.4	126.6	115.1	105.9	101.9	103.3	108.1	113.2	115.9	114.5	108.3
200	107.8	107.9	108.4	109.7	112.3	116.3	121.1	125.8	129.3	130.3	128.1	122.2	112.4
205	151.0	151.2	151.8	152.7	153.6	154.2	154.1	152.8	149.9	144.9	137.4	127.4	114.6
210	200.5	199.9	198.1	195.2	191.1	186.0	179.7	172.2	163.5	153.6	142.1	129.2	114.6
215	230.1	228.8	225.2	219.4	211.7	202.3	191.7	180.2	167.9	155.1	141.6	127.4	112.2
220	235.9	234.4	229.9	222.7	213.2	202.0	189.6	176.4	163.0	149.4	135.8	121.9	107.6
225	220.2	218.7	214.2	207.0	197.6	186.6	174.5	162.1	149.6	137.3	125.3	113.2	100.8
230	187.9	186.6	182.7	176.6	168.6	159.4	149.4	139.3	129.4	120.0	110.9	101.8	92.2
235	145.7	144.7	141.8	137.3	131.4	124.8	117.9	111.1	104.8	99.0	93.7	88.3	82.2
240	101.7	101.0	99.1	96.1	92.5	88.5	84.6	81.2	78.4	76.5	75.1	73.7	71.4
245	66.1	65.7	64.5	62.7	60.5	58.3	56.2	54.7	54.2	54.9	56.6	58.8	60.2
250	52.7	52.5	51.8	50.6	49.0	46.8	44.1	41.1	38.8	38.4	40.6	44.8	49.2
255	60.4	60.4	60.3	59.9	58.8	56.5	52.7	47.1	40.2	33.8	30.8	33.4	39.2
260	70.5	70.8	71.5	72.3	72.5	71.3	67.9	61.6	52.5	41.4	31.1	26.8	30.7
265	75.0	75.5	77.0	79.2	81.2	82.1	80.4	75.1	65.9	53.1	38.6	26.8	24.9
270	74.6	75.2	76.9	79.9	83.7	86.9	87.8	84.7	76.7	63.9	47.7	31.4	22.4
275	74.9	74.8	75.2	77.2	81.3	86.4	90.0	89.8	84.1	72.4	55.9	37.4	23.0
280	81.8	80.4	77.2	75.1	76.8	82.1	88.1	91.0	88.1	78.3	62.4	43.0	25.3
285	96.4	93.4	85.7	77.1	73.1	76.1	83.4	89.1	89.2	81.6	66.9	47.5	28.0
290	114.8	110.4	98.7	83.6	71.8	70.0	77.0	85.1	88.1	82.9	69.7	50.7	30.4
295	132.3	126.9	112.2	91.8	72.8	64.7	70.0	80.0	85.5	82.7	70.9	52.6	32.0
300	145.5	139.5	122.7	98.8	74.3	60.2	63.3	74.5	82.2	81.2	70.9	53.3	32.9
305	152.6	146.2	128.3	102.4	74.7	56.3	57.4	69.5	78.7	79.1	69.8	53.0	32.9
310	152.9	146.5	128.3	101.7	72.9	52.6	52.9	65.6	75.5	76.6	68.0	51.7	32.2
315	146.6	140.4	122.7	96.9	68.8	49.2	50.2	63.1	72.9	73.9	65.5	49.6	30.9
320	134.6	128.8	112.3	88.3	62.9	46.6	49.7	62.1	70.9	71.1	62.4	46.8	29.0
325	117.9	112.7	98.0	77.1	56.1	45.5	51.1	62.4	69.4	68.2	58.8	43.5	26.9
330	97.7	93.3	81.2	64.7	50.2	46.6	54.2	63.7	68.2	65.1	54.9	39.7	24.9
335	75.8	72.6	64.0	53.7	47.7	50.5	58.5	65.4	67.0	61.8	50.5	35.8	23.5
340	57.4	55.8	52.1	49.6	51.4	57.2	63.8	67.3	65.7	58.2	46.1	32.3	23.5
345	52.8	53.0	54.0	56.8	61.4	66.3	69.6	69.2	64.1	54.5	41.9	30.0	25.3
350	67.2	67.8	69.7	72.3	75.0	76.4	75.3	70.7	62.3	50.9	38.5	29.7	29.2
355	89.5	89.7	89.9	89.8	88.6	85.5	79.8	71.2	60.0	47.7	37.1	32.2	34.7



Radio Station WSNR • 620 kHz, Class B • Jersey City, New Jersey

Distance to Proposed Nighttime Interference-Free Contour

<u>Azimuth</u>	<u>20.09 mV/m</u>	<u>Azimuth</u>	<u>20.09 mV/m</u>	<u>Azimuth</u>	<u>20.09 mV/m</u>	<u>Azimuth</u>	<u>20.09 mV/m</u>
0°T	3.98 km	45°T	3.17 km	90°T	25.66 km	135°T	40.41 km
1	4.08	46	3.16	91	26.20	136	41.09
2	4.16	47	3.09	92	26.73	137	37.25
3	4.23	48	3.03	93	27.24	138	35.55
4	4.29	49	2.92	94	27.74	139	35.41
5	4.33	50	2.80	95	28.22	140	35.26
6	4.37	51	2.68	96	28.69	141	35.10
7	4.38	52	2.62	97	29.14	142	34.93
8	4.39	53	2.57	98	29.58	143	34.74
9	4.38	54	2.59	99	30.00	144	34.53
10	4.36	55	2.70	100	30.41	145	34.29
11	4.32	56	2.95	101	30.81	146	34.06
12	4.27	57	3.28	102	31.19	147	33.81
13	4.20	58	3.71	103	31.55	148	33.54
14	4.12	59	4.22	104	31.90	149	33.26
15	4.03	60	4.79	105	32.23	150	32.97
16	3.93	61	5.44	106	32.55	151	32.66
17	3.81	62	6.10	107	32.86	152	32.34
18	3.68	63	6.79	108	34.06	153	32.01
19	3.54	64	7.51	109	35.07	154	31.64
20	3.39	65	8.24	110	35.46	155	31.27
21	3.23	66	8.99	111	35.59	156	30.89
22	3.07	67	9.74	112	36.28	157	30.49
23	2.91	68	10.53	113	36.84	158	30.09
24	2.75	69	11.30	114	37.26	159	29.66
25	2.60	70	12.06	115	37.70	160	29.22
26	2.46	71	12.83	116	37.47	161	28.74
27	2.34	72	13.59	117	37.06	162	28.27
28	2.25	73	14.35	118	36.71	163	27.79
29	2.19	74	15.10	119	36.36	164	27.30
30	2.17	75	15.84	120	36.08	165	26.75
31	2.18	76	16.58	121	35.93	166	26.23
32	2.23	77	17.30	122	36.00	167	25.69
33	2.30	78	18.04	123	36.18	168	25.13
34	2.39	79	18.74	124	36.35	169	24.53
35	2.50	80	19.44	125	36.40	170	23.94
36	2.60	81	20.12	126	36.56	171	23.35
37	2.71	82	20.79	127	36.71	172	22.70
38	2.81	83	21.44	128	36.86	173	22.07
39	2.90	84	22.09	129	37.04	174	21.43
40	2.98	85	22.71	130	37.19	175	20.74
41	3.07	86	23.33	131	37.51	176	20.07
42	3.12	87	23.93	132	38.20	177	19.35
43	3.19	88	24.51	133	38.85	178	18.65
44	3.19	89	25.10	134	39.52	179	17.90

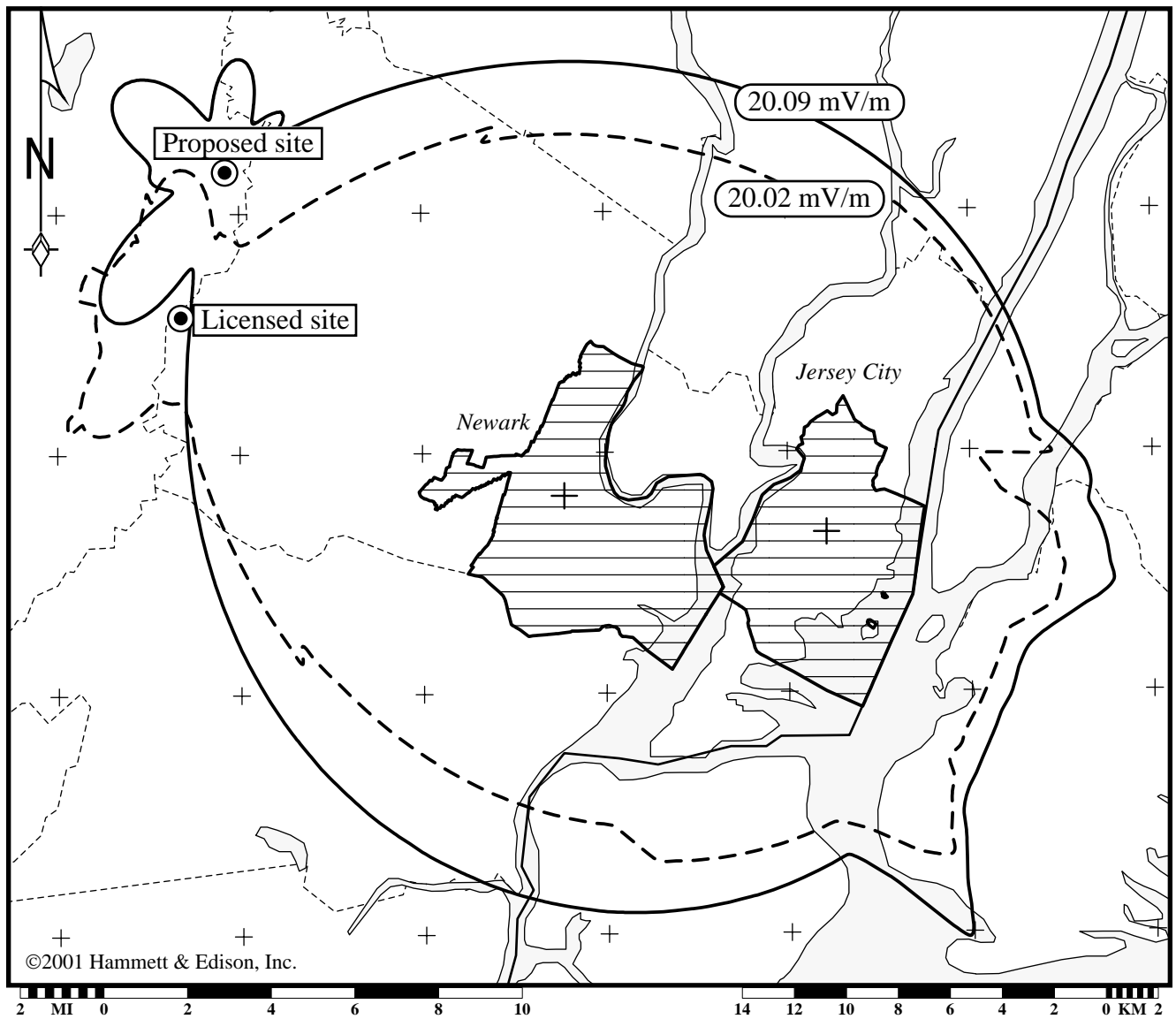
Radio Station WSNR • 620 kHz, Class B • Jersey City, New Jersey

Distance to Proposed Nighttime Interference-Free Contour

<u>Azimuth</u>	<u>20.09 mV/m</u>	<u>Azimuth</u>	<u>20.09 mV/m</u>	<u>Azimuth</u>	<u>20.09 mV/m</u>	<u>Azimuth</u>	<u>20.09 mV/m</u>
180 °T	17.14 km	225 °T	6.83 km	270 °T	2.89 km	315 °T	5.02 km
181	16.40	226	6.71	271	2.89	316	4.96
182	15.61	227	6.57	272	2.88	317	4.91
183	14.81	228	6.42	273	2.88	318	4.84
184	14.00	229	6.25	274	2.89	319	4.77
185	13.17	230	6.07	275	2.90	320	4.69
186	12.34	231	5.88	276	2.93	321	4.61
187	11.49	232	5.67	277	2.96	322	4.52
188	10.64	233	5.45	278	3.01	323	4.43
189	9.79	234	5.23	279	3.06	324	4.33
190	8.89	235	4.99	280	3.13	325	4.22
191	7.99	236	4.75	281	3.20	326	4.11
192	7.11	237	4.50	282	3.29	327	4.00
193	6.24	238	4.25	283	3.38	328	3.88
194	5.55	239	4.00	284	3.48	329	3.75
195	5.05	240	3.74	285	3.58	330	3.62
196	4.60	241	3.49	286	3.69	331	3.49
197	4.25	242	3.25	287	3.80	332	3.35
198	4.01	243	3.02	288	3.91	333	3.21
199	3.90	244	2.80	289	4.02	334	3.07
200	3.93	245	2.61	290	4.13	335	2.93
201	4.07	246	2.44	291	4.24	336	2.79
202	4.29	247	2.31	292	4.34	337	2.66
203	4.55	248	2.22	293	4.44	338	2.53
204	4.84	249	2.16	294	4.54	339	2.41
205	5.13	250	2.15	295	4.63	340	2.31
206	5.42	251	2.16	296	4.71	341	2.22
207	5.69	252	2.20	297	4.79	342	2.16
208	5.94	253	2.26	298	4.86	343	2.13
209	6.16	254	2.34	299	4.93	344	2.12
210	6.37	255	2.42	300	4.99	345	2.15
211	6.55	256	2.49	301	5.04	346	2.20
212	6.71	257	2.57	302	5.08	347	2.29
213	6.85	258	2.64	303	5.12	348	2.39
214	6.96	259	2.70	304	5.15	349	2.51
215	7.05	260	2.76	305	5.18	350	2.65
216	7.12	261	2.81	306	5.19	351	2.79
217	7.17	262	2.84	307	5.20	352	2.93
218	7.19	263	2.87	308	5.20	353	3.08
219	7.20	264	2.89	309	5.20	354	3.23
220	7.18	265	2.90	310	5.18	355	3.37
221	7.15	266	2.91	311	5.16	356	3.51
222	7.09	267	2.91	312	5.14	357	3.64
223	7.02	268	2.91	313	5.10	358	3.76
224	6.94	269	2.90	314	5.06	359	3.88

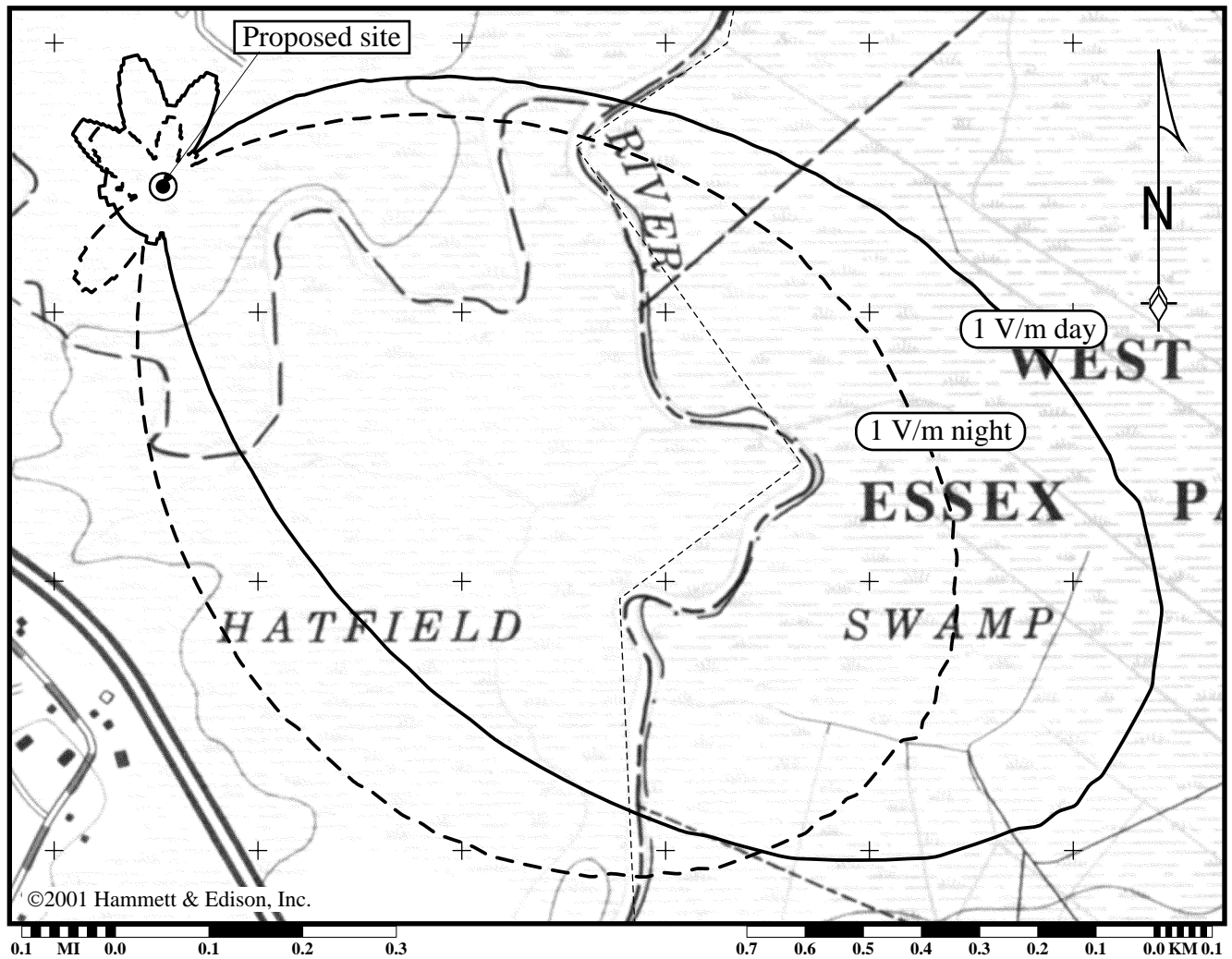
Radio Station WSNR • 620 kHz, Class B • Jersey City, New Jersey

Nighttime Coverage Contours
Licensed (Newark) and Proposed (Jersey City)



Radio Station WSNR • 620 kHz, Class B • Jersey City, New Jersey

Proposed 1 V/m Blanketing Contours



According to 2000 U.S. Census, only 44 persons reside within the daytime blanketing contour and no persons reside within the nighttime blanketing contour.



HAMMETT & EDISON, INC.
CONSULTING ENGINEERS
SAN FRANCISCO

011121
Exhibit 10F1

Radio Station WSNR • 620 kHz, Class B • Jersey City, New Jersey

Licensed 1 V/m Blanketing Contours

