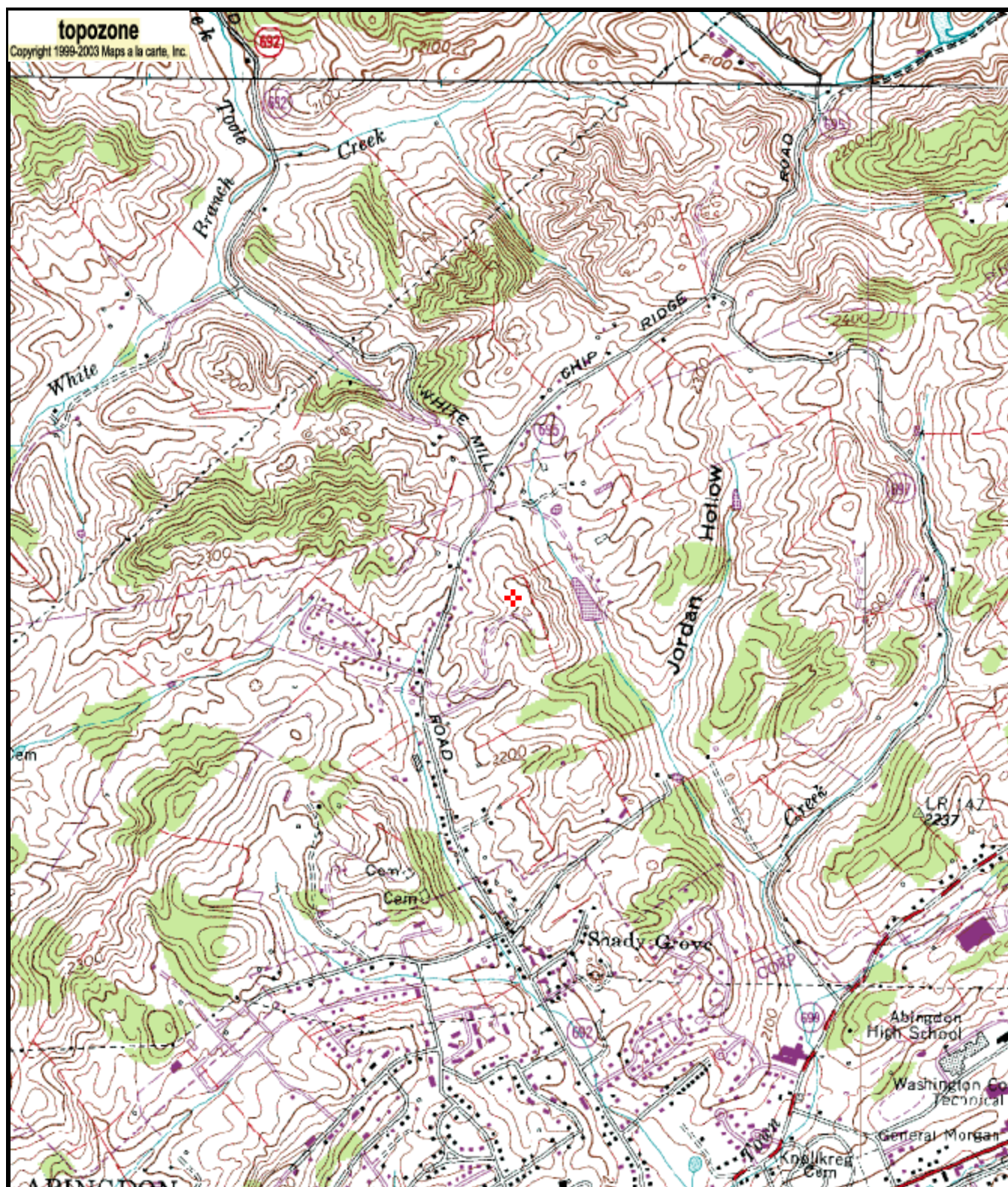


Appalachian Educational Commu											
Exhibit 12											
REFERENCE		CH# 276D - 103.1 MHz, Pwr= 0.01 kW, HAAT=68.8 M, COR= 713 M								DISPLAY DATES	
36 44 03 N.		Average Protected F(50-50)= 4.83 km								DATA 04-12-06	
81 58 18 W.		Ave. F(50-10) 40 dBu= 15.3 54 dBu= 6.7 80 dBu= 1.6 100 dBu= .2								SEARCH 06-21-06	
CH CITY	CALL	TYPE STATE	AZI. <--	DIST FILE #	LAT. LNG.	Pwr(kW) HAAT(M)	COR(M) INT(km)	PRO(km) LICENSEE	*IN* (Overlap in km)	*OUT* (in km)	
276D Abingdon	W276BD	CP VA C	144.8 324.8	3.17 BNPFT20030819AAG	36 42 39 81 57 04	0.010 42	692 11.8	3.7 Appalachian Educational Co	-14.73*	-20.58*	
276A Clinchco	RADD	ADD VA	321.0 140.8	58.85	37 08 42 82 23 22	6.000 32	659 69.2	16.2 East Kentucky Broadcasting	-13.51	32.53	
276A Coal Run	AL276	RSV KY	327.4 147.0	87.92 RM9803	37 23 57 82 30 32	6.000 66	485 80.2	23.3	4.55	54.44	
274A Glade Spring	AU062	VAC VA N	85.7 265.9	30.40 RM	36 45 15 81 37 56	6.000 276	909 4.0	44.0	21.42	-13.79*	
274A Glade Spring	RDEL	DEL VA	85.7 265.9	30.40	36 45 15 81 37 56	6.000 276	909 4.0	44.0 Jbl Broadcasting, Inc.	21.42	-13.79*	
274A Glade Spring	AP274	APP VA	85.7 265.9	30.40 BSFH20050812AWY	36 45 15 81 37 56	0.000 -633	0 0.0	0.0 Asradio, Lic	25.44	30.18	
276A Tusculum	WI KQ	LIC TN CN	221.4 41.0	89.66 BLH19960111KY	36 07 40 82 37 57	6.000 117	599 89.4	30.4 Radio Greeneville, Inc.	-5.56	40.17	
275D Bristol	AP275	APP VA C	227.8 47.7	22.90 BNPFT20030317LKV	36 35 45 82 09 42	0.010 40	639 5.1	3.6 Virginia Tech Foundation,	12.13	11.40	
276A Coal Run	RDEL	DEL KY	327.9 147.5	96.16	37 27 57 82 33 04	6.000 81	442 83.3	25.6 East Kentucky Broadcasting	9.72	60.39	
276A Coal Run	WPKEFM	LIC KY ZCX	327.9 147.5	96.16 BLH20020820ABI	37 27 57 82 33 04	1.200 212	573 79.4	27.5 East Kentucky Broadcasting	13.62	58.48	
274A Glade Spring	AP274	APP VA NCX	76.6 256.9	38.15 BNPH20060308ALW	36 48 45 81 33 20	6.000 155	795 3.3	34.7 Asradio, Lic	30.64	3.23	
275D Bristol	AP275	APP TN C	231.6 51.5	26.03 BNPFT20030313AFY	36 35 19 82 12 00	0.010 106	685 8.4	6.0 Appalachian Educational Co	12.17	12.43	
273A Marion	RADD	ADD VA	63.8 244.1	42.75	36 54 10 81 32 27	6.000 21	841 1.6	15.8 Jbl Broadcasting, Inc.	38.03	26.78	
273A Marion	WOLDFM	LIC VA CN	63.8 244.1	42.75 BLH19901214KF	36 54 10 81 32 27	0.440 299	1119 1.5	25.7 Emerald Sound, Inc.	38.13	16.79	
274C3 Weber City	RADD	ADD VA	247.4 67.0	59.66	36 31 36 82 35 13	25.000 148	543 4.9	45.8 Jbl Broadcasting, Inc.	50.13	13.66	
275D Elizabethton	AP275	APP TN C	209.3 29.2	42.30 BNPFT20030314BED	36 24 07 82 12 12	0.010 270	796 13.5	9.6 Bristol Broadcasting Co.,	22.83	24.26	
274D Elizabethton	AP274	APP TN C	203.6 23.5	36.33 BNPFT20030313ASQ	36 26 03 82 08 03	0.010 756	1316 0.2	15.3 Appalachian Educational Co	30.16	20.81	
278A Marion	WZVA	LIC VA C	70.2 250.5	55.82 BLH20030930BCX	36 54 10 81 22 56	3.700 185	951 3.0	33.7 T.e.c.o. Broadcasting, Inc	49.20	21.90	
273D Johnson City	AP273	APP TN DV	209.3 29.2	42.30 BNPFT20030317ETN	36 24 07 82 12 12	0.056 274	800 0.5	14.7 Murray Communications	35.76	27.33	
275A Welch	WELCFM	LIC WV CN	22.5 202.7	82.10 BLH19900207KC	37 25 01 81 36 58	1.800 127	680 36.0	24.0 Pocahontas Broadcasting Co	39.54	48.94	
274D Johnson City	AP274	APP TN C	216.1 35.8	56.28 BNPFT20030317LPQ	36 19 27 82 20 30	0.055 139	613 0.5	10.4 Jill Short	50.14	45.62	
274D Johnson City	AP274	APP TN C	216.1 35.9	56.30 BNPFT20030313AGP	36 19 27 82 20 31	0.010 182	656 0.2	7.8 Appalachian Educational Co	50.45	48.24	
279D Boone	AP279	APP NC C	156.3 336.4	60.75 BNPFT20030317ADG	36 13 59 81 41 55	0.010 330	1413 0.2	10.6 Bible Broadcasting Network	54.59	49.94	
277A Lenoir	WKVS	LIC NC NCN	155.8 336.1	92.27 BLH19950928KB	35 58 31 81 33 05	1.000 112	694 29.0	19.7 Foothills Radio Group, Lic	57.35	64.27	
277A Lenoir	WKVS. C	CP NC NCX	155.9 336.1	92.28 BPH20041116ABM	35 58 30 81 33 07	0.940 126	707 30.2	20.5 Foothills Radio Group, Lic	56.11	63.46	

Page # 2

CH CITY	CALL	TYPE STATE	AZI. <--	DIST FILE #	LAT. LNG.	Pwr(kW) HAAT(M)	COR(M) INT(km)	PRO(km) LICENSEE	*IN* (Overlap in km)	*OUT*
274A Cumberland	WVEKFM	LIC CN KY	284.0 103.5	85.30 BLH19941212KB	36 54 59 82 54 02	0.175 614	1280 0.9	29.8 Jbl Broadcasting, Inc.	77.26	55.27
274A Cumberland	RDEL	DEL KY	286.7 106.1	94.41	36 58 25 82 59 15	6.000 61	798 2.3	22.6 Jbl Broadcasting, Inc.	84.74	71.59

ERP and HAAT are on direct line to and from reference station.  
\*\*\*affixed to 'IN' or 'Out' values = site inside protected contour.



Map center is 36° 44' 03"N, 81° 58' 18"W (NAD27)

**Abingdon** quadrangle

Projection is UTM Zone 17 NAD83 Datum

M=-6.608  
G=-0.581