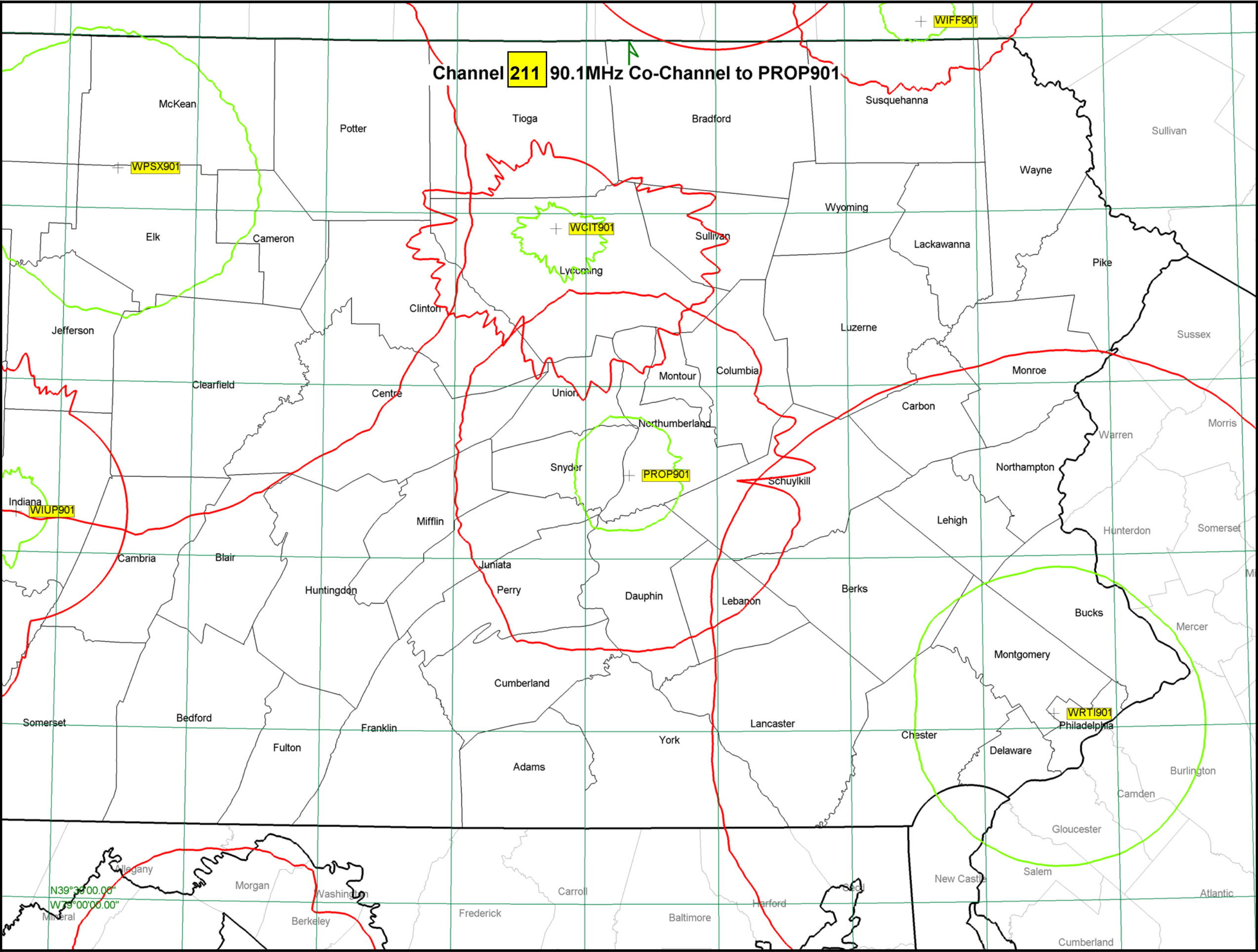


Proposal for Channel 211, 90.1MHz, Selinsgrove, PA

The first three parts of this exhibit show the Interference Contours per FCC Title 47, part 73.509 rules. The proposed Class A, NCE site is designated as PROP901. The frequency of each site is shown with the station ID when there is room to do so. The first part shows Co-Channel interference contours, the second one shows 1st adjacent channel interference contours, and the third one shows 2nd & 3rd adjacent interference contours. In all cases, the proposed Class A, NCE station is configured so no interference contours from the proposed station touches any other station (no matter what the status, licensed, CP, or Application). In the case of protecting WRTI, Philadelphia, a co-channel to the proposed NCE, we used an omni pattern in our prediction at full ERP of 7.7Kw to protect them.

The last part to this exhibit shows a FM Query Listing from the FCC's FM Preliminary Study search. In this the stations high lighted in yellow are the stations used in the first three parts of this exhibit for the interference contour study. Finally, per FCC Title 47, part 73.207 IF Channel separation of 53 or 54 channels from the proposed Class A, NCE channel number 211 is show at the end of the station listing, in this case there are two IF channels within 50km of the proposed station NCE FM station. The two IF stations, WVLY Milton and NEW FX Halifax translator station are beyond the 10km listed in part 73.207 rules for a Class A to Class A distance. In this case, they are 24km and 32km respectively, where the translator is Class D and meets the Class A distance.



EDX SignalPro™: BIG-FM

Reference Grid (spacing: 30')

Interference contour study

Propagation methods:

service contour : FCC-FCC 50.0%

cochannel interference : FCC-FCC 10.0%

= 60.0 dBuV/m service contour

= 40.0 dBuV/m cochannel interference

USA

PA Counties

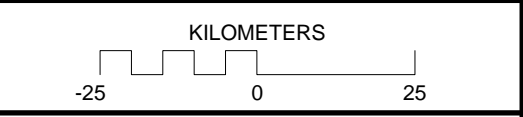
PA Perimeter Counties

Notes

Channel 211 90.1MHz

Co-Channel 211 90.1MHz

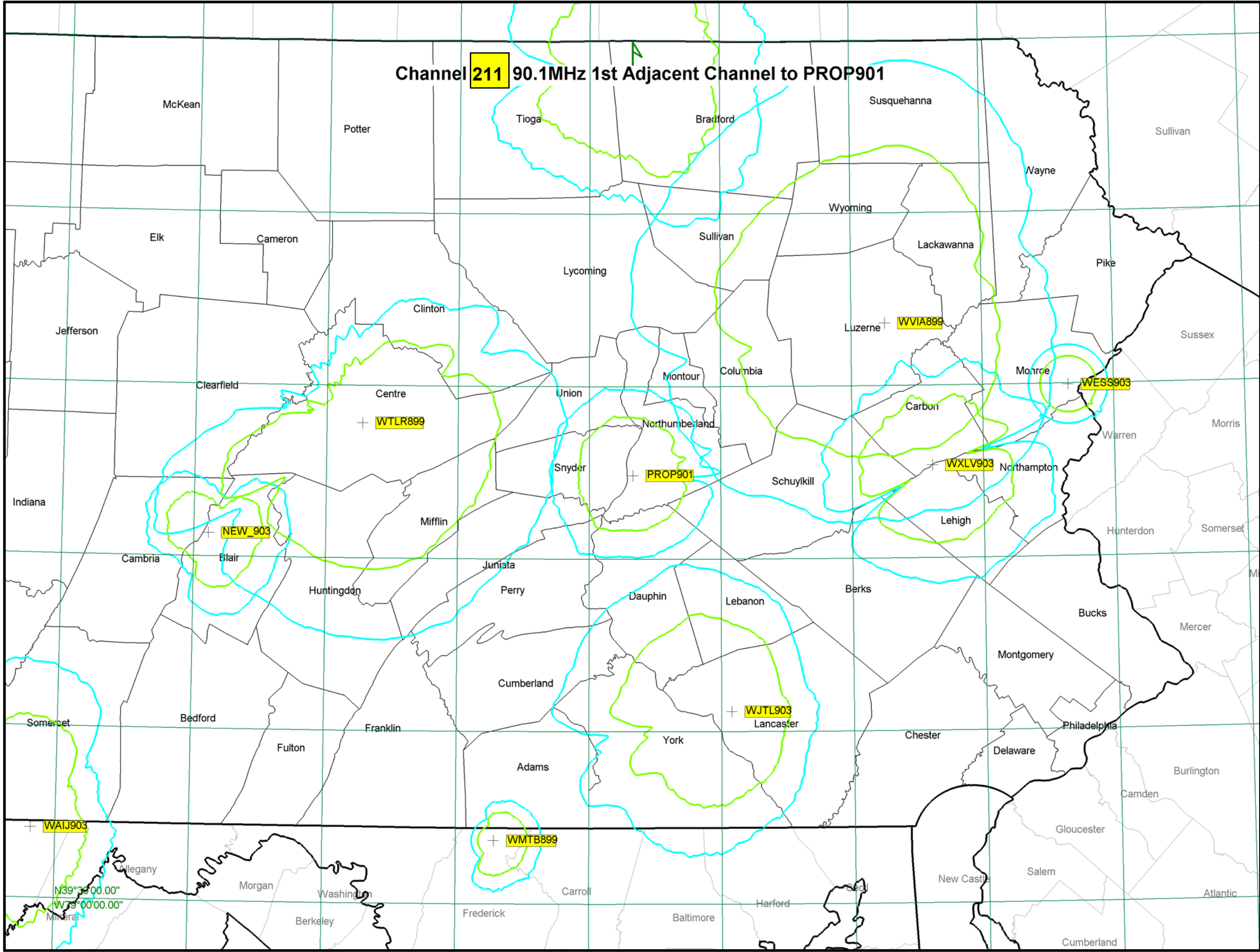
Proposed 90.1 Selinsgrove, PA



EDX

Comarco Wireless Technologies

Tools for Wireless Design



EDX SignalPro™: BIG-FM

Reference Grid (spacing: 30')

Interference contour study

Propagation methods:
service contour : FCC-FCC 50.0%
1st adjacent interference : FCC-FCC 10.0%

= 60.0 dBμV/m service contour
 = 54.0 dBμV/m 1st adjacent interference

USA

PA Counties

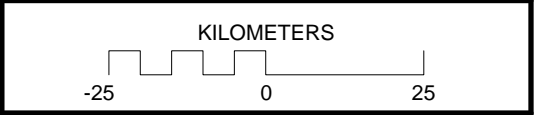
PA Perimeter Counties

Notes

Channel **211** 90.1MHz

1st Adjacent Channel **210/212** 89.9/90.3MHz

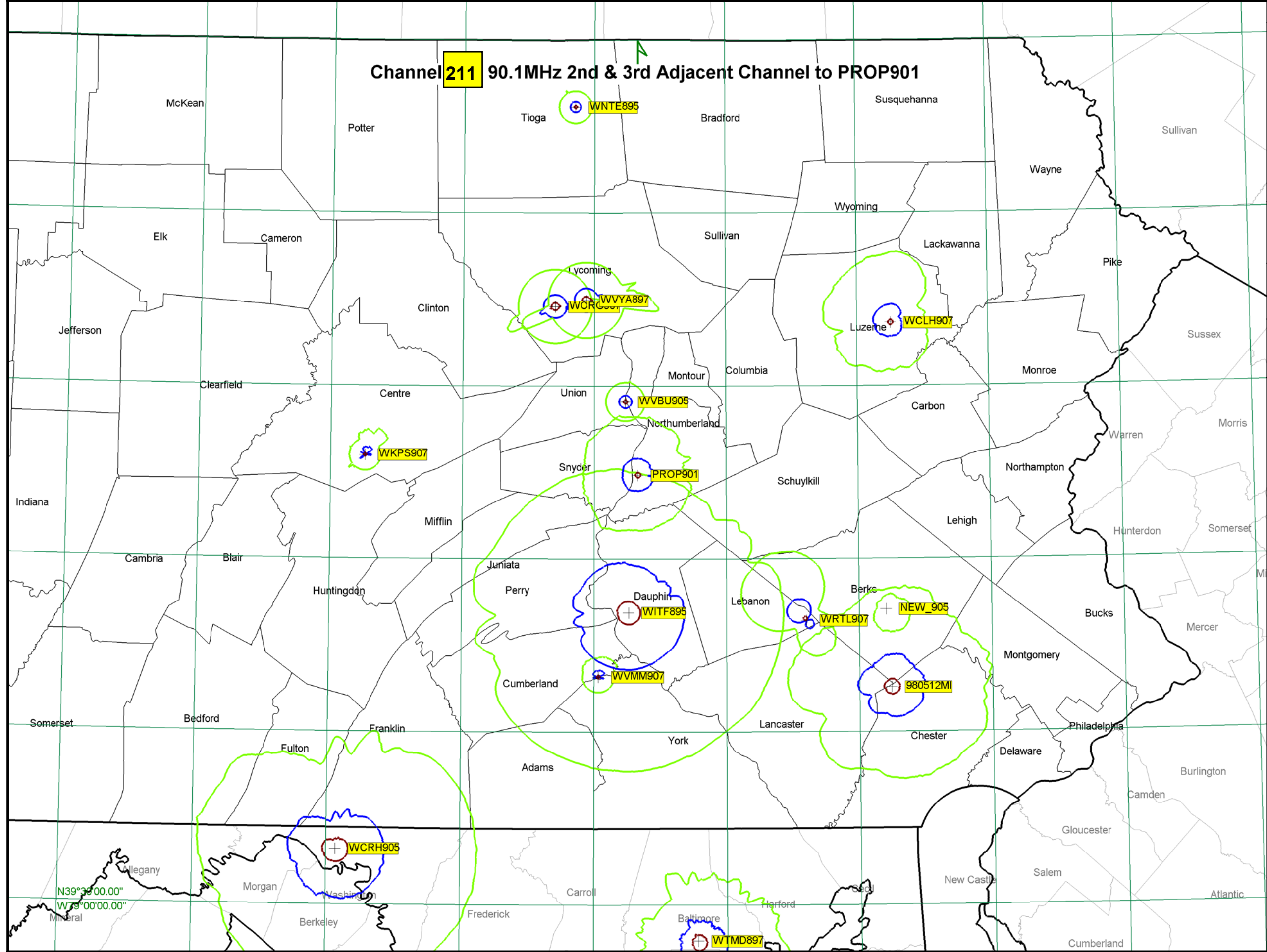
Proposed 90.1 Selinsgrove, PA



EDX

Comarco Wireless Technologies

Tools for Wireless Design



EDX SignalPro™: BIG-FM

Reference Grid (spacing: 30')

Interference contour study

Propagation methods:

service contour : FCC-FCC 50.0%

2nd adjacent interference : FCC-FCC 10.0%

3rd adjacent interference : FCC-EDX 10.0%

= 60.0 dBuV/m service contour

= 80.0 dBuV/m 2nd adjacent interference

= 100.0 dBuV/m 3rd adjacent interference

USA

PA Counties

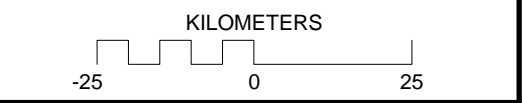
PA Perimeter Counties

Notes

Channel 211 90.1MHz

2nd & 3rd Adjacent Channel 208-209/213-214

Proposed 90.1 Selinsgrove, PA



EDX

Comarco Wireless Technologies

Tools for Wireless Design



Audio Division

FM Query Results

(202)-418-2700

FCC > MB > Audio Division > FM Query

AM Query

TV Query

FCC site map



FM Query results are derived from the public files at <http://www.fcc.gov/mb/databases/cdbs>. Requests to correct data should be referred to [Dale Bickel, dale.bickel@fcc.gov](mailto:dale.bickel@fcc.gov). Comments on the FM Query may be referred to [Dale Bickel, dale.bickel@fcc.gov](mailto:dale.bickel@fcc.gov).

- This list is best printed in LANDSCAPE mode.
- Use the TEXT SIZE input on the [FM Query](#) page to change the text size in the list below, for easier printing or viewing.
- Click on the blue Call Sign or blue Facility ID Number to retrieve more detailed information from the FM Query, including access to the CDBS database records pertaining to that station.
- Records for stations outside the USA are derived from international notifications.
- The FCC does not collect information on the types of programming (jazz, talk, Top40, etc.) aired on radio broadcast stations, or about specific programs.
- License, application, and construction permit (CP) coordinates shown in the FM Query are NAD 27 coordinates.
- Antenna Structure Registration (ASR) coordinates are NAD 83.

Sun Oct 14 15:15:23 2007 Eastern time

Preliminary FM Search -- Channel 211 / 90.1 MHz

Search Parameters

Lower Channel 208
Upper Channel 214

W208AF	208 D	FX	89.5 MHz	LIC	NANTICOKE, ETC.	PA US	BLFT-19871119TC	-	20962	0.016 kW	DA	313. m	706. m	0. m	N 41 10 57.00	W 75 52 10.00	-	94.70 km	58.85 mi	58.59°
FAMILY STATIONS, INC.																				
WNTE	208 A	FM	89.5 MHz	LIC	MANSFIELD	PA US	BLER-20051025ABM	-	39817	0.115 kW		-85. m	401. m	17. m	N 41 48 23.00	W 77 4 25.00	-	119.77 km	74.42 mi	350.45°
WITF-FM	208 B	FM	89.5 MHz	LIC	HARRISBURG	PA US	BMLED-20040130ADW	-	73084	5.9 kW		415. m	599. m	199. m	N 40 20 44.00	W 76 52 7.00	1040042	44.26 km	27.50 mi	183.83°
WITF-FM	208 B	FS	89.5 MHz	LIC	HARRISBURG	PA US	BXLED-20060817ACV	-	73084	13.6 kW		257.6 m	437.4 m	38.1 m	N 40 20 44.00	W 76 52 7.00	-	44.26 km	27.50 mi	183.83°
WTMD	209 B1	FM	89.7 MHz	LIC	TOWSON	MD US	BLER-19840613CH	-	67461	10. kW		72. m	176. m	54. m	N 39 23 45.00	W 76 36 29.00	-	150.85 km	93.73 mi	172.62°
W209BN	209 D	FX	89.7 MHz	LIC	CHAMBERSBURG	PA US	BLFT-20001002BNE	-	106565	0.01 kW		23. m	258. m	30.3 m	N 39 54 29.00	W 77 38 8.00	1025565	115.09 km	71.51 mi	216.46°
WVYA	209 A	FM	89.7 MHz	LIC	WILLIAMSPORT	PA US	BLER-20021126AAZ	-	92638	3.3 kW	DA	-5. m	272. m	22. m	N 41 14 54.00	W 77 1 52.00	-	58.49 km	36.35 mi	343.63°
980512MI	209 A	FM	89.7 MHz	CP	MORGANTOWN	PA US	BPED-19980512MI	-	90677	0.025 kW	DA	162. m	349. m	36. m	N 40 7 45.00	W 75 52 43.00	1032936	105.91 km	65.81 mi	129.88°
WOEL-FM	210 A	FM	89.9 MHz	LIC	ELKTON	MD US	BLER-19821227AJ	-	39897	3. kW		79. m	122. m	87. m	N 39 35 35.00	W 75 51 49.00	-	152.12 km	94.52 mi	146.88°
WMTB-FM	210 A	FM	89.9 MHz	LIC	EMMITSBURG	MD US	BLER-19910426KC	-	43919	0.1 kW		44. m	270. m	23. m	N 39 41 2.00	W 77 21 25.00	-	125.78 km	78.16 mi	200.83°
WNJM	210 A	FM	89.9 MHz	LIC	MANAHAWKIN	NJ US	BLER-19990803KC	-	48460	0.2 kW		79. m	88. m	85. m	N 39 41 57.00	W 74 14 5.00	1027616	249.76 km	155.20 mi	116.91°
WJPH	210 A	FM	89.9 MHz	LIC	WOODBINE	NJ US	BLER-20050418AAK	-	90117	1. kW	DA	32. m	37.8 m	22.8 m	N 39 16 51.00	W 74 51 11.00	-	234.45 km	145.68 mi	133.31°
WKCR-FM	210 B1	FM	89.9 MHz	LIC	NEW YORK	NY US	BLER-19850304KY	-	68270	0.63 kW		433. m	443. m	440. m	N 40 42 43.00	W 74 0 49.00	-	238.28 km	148.06 mi	89.92°
W210BL	210 D	FX	89.9 MHz	LIC	NORWICH	NY US	BLFT-19991124ACF	-	92871	0.01 kW		20. m	464. m	10. m	N 42 29 21.00	W 75 30 23.00	-	223.25 km	138.72 mi	29.17°
WKCR-FM	210 B1	FM	89.9 MHz	CP	NEW YORK	NY US	BPED-20040809ABO	-	68270	0.745 kW		409. m	422. m	406.5 m	N 40 44 54.00	W 73 59 10.00	1007048	240.51 km	149.45 mi	88.94°
WTLR	210 B	FM	89.9 MHz	LIC	STATE COLLEGE	PA US	BLER-19920527KB	-	9944	25. kW	DA	178. m	579. m	40. m	N 40 53 32.00	W 77 51 49.00	-	88.45 km	54.96 mi	281.15°
WVIA-FM	210 B	FM	89.9 MHz	LIC	SCRANTON	PA US	BMLED-20011015AGP	-	49436	5. kW		381. m	761. m	120. m	N 41 10 55.00	W 75 52 17.00	1026992	94.53 km	58.74 mi	58.57°
W210BX	210 D	FX	89.9 MHz	CP MOD	HIGHSPIRE	PA US	BMPFT-20070904AIW	-	155485	0.003 kW		0. m	311. m	37. m	N 40 11 30.00	W 76 52 2.00	1204946	61.32 km	38.10 mi	182.66°
WVIA-FM	210 B	FM	89.9 MHz	CP	SCRANTON	PA US	BPED-20070907AGU	-	49436	7.4 kW	DA	381. m	761. m	120. m	N 41 10 55.00	W 75 52 17.00	1026992	94.53 km	58.74 mi	58.57°
WPER	210 B	FM	89.9 MHz	LIC	CULPEPER	VA US	BLER-20060327AIO	-	53095	41. kW	DA	127. m	256. m	86.2 m	N 38 40 42.00	W 77 47 18.00	1016110	243.44 km	151.27 mi	199.88°
W264BD	210 D	FX	89.9 MHz	CP	AQUIA HARBOUR	VA US	BPFT-20070829AAJ	-	155019	0.005 kW		0. m	80. m	46. m	N 38 34 18.00	W 77 19 21.00	-	244.73 km	152.07 mi	189.99°
W211AI	211 D	FX	90.1 MHz	LIC	STAMFORD	CT US	BLFT-19940317TI	-	58518	0.25 kW	DA	29. m	65. m	0. m	N 41 2 52.00	W 73 33 16.00	-	278.41 km	172.99 mi	81.93°
WGSK	211 A	FM	90.1 MHz	LIC	SOUTH KENT	CT US	BLER-20030310AAB	-	61119	0.077 kW		39. m	274. m	35. m	N 41 40 54.00	W 73 29 13.00	-	299.41 km	186.04 mi	68.46°
WGSK	211 A	FS	90.1 MHz	LIC	SOUTH KENT	CT US	BXLED-20060607ABB	-	61119	0.077 kW		11. m	246. m	7. m	N 41 40 54.00	W 73 29 13.00	-	299.41 km	186.04 mi	68.46°
WCSF-FM	211 B	FM	90.1 MHz	LIC	WASHINGTON	DC US	BLER-19980127KA	-	68950	36. kW	DA	173. m	234. m	146. m	N 38 57 44.00	W 77 1 36.00	1036577	198.44 km	123.30 mi	184.82°
WCSP-FM	211 B	FS	90.1 MHz	LIC	WASHINGTON	DC US	BLER-19990106KB	-	68950	0.6 kW		164. m	230. m	117. m	N 38 53 30.00	W 77 7 55.00	1018169	207.16 km	128.72 mi	187.15°
W211AE	211 D	FX	90.1 MHz	LIC	MAYVILLE, ETC.	NY US	BLFT-19881121TB	-	53718	0.003 kW	DA	57. m	467. m	0. m	N 42 15 13.00	W 79 30 30.00	-	279.31 km	173.55 mi	307.90°
WXHD	211 A	FM	90.1 MHz	LIC	MOUNT HOPE	NY US	BLER-19950306KD	-	60031	1.1 kW		183. m	430. m	46. m	N 41 25 36.00	W 74 34 54.00	-	203.89 km	126.69 mi	67.33°
WIFF	211 A	FM	90.1 MHz	LIC	BINGHAMTON	NY US	BLER-19950620KC	92-116	2868	0.1 kW	DA	209. m	619. m	46. m	N 42 3 10.00	W 75 42 7.00	-	173.52 km	107.82 mi	32.58°
WRCU-FM	211 A	FM	90.1 MHz	LIC	HAMILTON	NY US	BLER-19790510AF	-	12241	1.9 kW		47. m	479. m	26. m	N 42 48 38.00	W 75 31 58.00	-	253.81 km	157.71 mi	24.71°
WGMC	211 B1	FM	90.1 MHz	LIC	GREECE	NY US	BLER-20040116AGE	-	25113	15. kW	DA	42. m	152.5 m	55. m	N 43 14 40.00	W 77 41 36.00	-	286.79 km	178.21 mi	345.96°
970411MC	211 A	FM	90.1 MHz	CP	ITHACA	NY US	BPED-19970411MC	-	86349	4.2 kW		-96. m	249. m	20. m	N 42 25 47.00	W 76 29 49.00	-	189.40 km	117.69 mi	8.38°
WIUP-FM	211 A	FM	90.1 MHz	LIC	INDIANA	PA US	BLER-19800304AF	-	28604	1.6 kW		27. m	425. m	35. m	N 40 36 57.00	W 79 9 40.00	-	197.27 km	122.58 mi	266.63°
WRTI	211 B	FM	90.1 MHz	LIC	PHILADELPHIA	PA US	BLER-19881223KC	-	65190	12.5 kW	DA	308. m	374. m	300. m	N 40 2 21.00	W 75 14 13.00	-	156.51 km	97.25 mi	119.55°

W211AA	211 D	FX	90.1 MHz	LIC	HARRISBURG, ETC.	PA US	BLFT-19911219TB	-	67128	0.006 kW	DA	137. m	308. m	0. m	N 40 20 21.00	W 76 52 56.00	-	45.06 km	28.00 mi	185.23° T
WPSX	211 B	FM	90.1 MHz	LIC	KANE	PA US	BLER-19950313KB	-	66240	17. kW	DA	232. m	794. m	159. m	N 41 37 4.00	W 78 48 14.00	-	191.73 km	119.13 mi	301.18° T
WVMN	211 A	FM	90.1 MHz	LIC	NEW CASTLE	PA US	BLER-19951130KA	-	43698	2. kW		72. m	414. m	33. m	N 41 0 47.00	W 80 17 36.00	-	293.15 km	182.16 mi	277.02° T
NEW	211 D	FX	90.1 MHz	APP	CHAMBERSBURG	PA US	BNPFT-20000218ABB	-	122860	0.01 kW	DA	428. m	727. m	18. m	N 40 2 49.00	W 77 44 57.00	-	109.63 km	68.12 mi	225.33° F
W211BK	211 D	FX	90.1 MHz	LIC	LEWISBURG	PA US	BLFT-20000724AAC	-	106566	0.05 kW		6. m	195. m	30.5 m	N 40 56 40.00	W 76 52 46.00	1025548	22.67 km	14.09 mi	350.26° F
WCIT	211 A	FM	90.1 MHz	LIC	TROUT RUN	PA US	BLER-20010827AAE	-	106476	0.35 kW		90. m	573. m	24. m	N 41 27 26.00	W 77 6 55.00	-	82.74 km	51.41 mi	343.54° F
WRTI	211 B	FM	90.1 MHz	APP	PHILADELPHIA	PA US	BPED-20070824AGY	-	65190	7.7 kW	DA	371. m	435. m	346. m	N 40 2 29.60	W 75 14 11.50	1231524	156.40 km	97.18 mi	119.46° T
WRTI	211 B	FM	90.1 MHz	APP	PHILADELPHIA	PA US	BPED-20070824AGY	-	65190	7.7 kW	DA	371. m	435. m	346. m	N 40 2 29.60	W 75 14 11.50	1231524	156.40 km	97.18 mi	119.46° T
NEW	211 A	FM	90.1 MHz	APP	GORE	VA US	BNPED-20000218AAF	-	122630	0.035 kW	DA	463.4 m	805.9 m	22.9 m	N 39 10 58.00	W 78 23 23.00	1018046	218.39 km	135.70 mi	217.89° F
WAIJ	212 B	FM	90.3 MHz	LIC	GRANTSVILLE	MD US	BLER-19841001DW	-	26528	10. kW	DA	171. m	922. m	93. m	N 39 42 14.00	W 79 5 31.00	-	224.20 km	139.31 mi	239.65° F
WRPR	212 A	FM	90.3 MHz	LIC	MAHWAH	NJ US	BLER-19800613AA	-	55029	0.1 kW		-20. m	122. m	26. m	N 41 4 51.00	W 74 10 34.00	-	227.02 km	141.06 mi	79.59° F
WVPH	212 A	FM	90.3 MHz	LIC	PISCATAWAY	NJ US	BLER-19801114AE	-	52686	0.2 kW		2. m	43. m	17. m	N 40 32 45.00	W 74 28 25.00	-	200.84 km	124.79 mi	95.52° F
WKNJ-FM	212 D	FM	90.3 MHz	LIC	UNION TOWNSHIP	NJ US	BLER-19820913AW	-	33783	0.009 kW		5. m	39. m	25. m	N 40 40 35.00	W 74 14 2.00	-	219.83 km	136.59 mi	91.10° F
WMSC	212 D	FM	90.3 MHz	LIC	UPPER MONTCLAIR	NJ US	BLER-19980209KA	-	43579	0.001 kW		205. m	272. m	152. m	N 40 51 53.00	W 74 12 3.00	1045123	222.59 km	138.31 mi	85.65° N
NEW	212 A	FM	90.3 MHz	APP	SPARATA	NJ US	BNPED-20000218AAU	-	122701	0.027 kW		195. m	466. m	61. m	N 41 0 43.00	W 74 35 32.00	1059478	191.28 km	118.86 mi	80.26° F
WVPH	212 A	FM	90.3 MHz	CP	PISCATAWAY	NJ US	BPED-20050613ACN	-	52686	0.1 kW		77.4 m	112.5 m	81.1 m	N 40 31 21.00	W 74 25 52.50	1045053	204.73 km	127.21 mi	96.12° F
WHCR-FM	212 D	FM	90.3 MHz	LIC	NEW YORK	NY US	BLER-19860626KA	-	11412	0.008 kW		81. m	102. m	60. m	N 40 49 9.00	W 73 56 59.00	-	243.60 km	151.37 mi	87.07° C
WJSL	212 B1	FM	90.3 MHz	LIC	HOUGHTON	NY US	BLER-19900227KD	-	27689	6. kW		66. m	576. m	44. m	N 42 22 39.00	W 78 10 45.00	-	213.40 km	132.60 mi	328.81° V
W212BA	212 D	FX	90.3 MHz	LIC	GENEVA	NY US	BLFT-19990401TC	-	86853	0.088 kW		2. m	195. m	21. m	N 42 51 27.00	W 76 59 21.00	-	235.18 km	146.13 mi	356.91° T
WCIH	212 B1	FM	90.3 MHz	LIC	ELMIRA	NY US	BLER-20010529ABG	-	20641	4. kW		160.5 m	650.6 m	56. m	N 41 53 39.00	W 76 51 32.00	1003150	127.83 km	79.43 mi	359.07° F
WKRBB	212 D	FM	90.3 MHz	LIC	BROOKLYN	NY US	BLER-20060424ADG	-	34902	0.01 kW		40.7 m	43. m	40.6 m	N 40 34 36.00	W 73 56 4.00	-	245.88 km	152.79 mi	93.39° F
W212AG	212 D	FX	90.3 MHz	LIC	BERWICK, ETC.	PA US	BLFT-19871113TA	-	20755	0.017 kW	DA	271. m	532. m	0. m	N 41 5 47.00	W 76 20 23.00	-	57.18 km	35.53 mi	46.43° F
WXLV	212 A	FM	90.3 MHz	LIC	SCHNECKSVILLE	PA US	BLER-19931227KF	-	36983	0.42 kW		70. m	240. m	38. m	N 40 39 43.00	W 75 36 41.00	-	103.70 km	64.44 mi	94.62° I
WESS	212 A	FM	90.3 MHz	LIC	EAST STROUDSBURG	PA US	BMLED-19950919KA	-	18247	1. kW		-37. m	195. m	37. m	N 40 59 50.00	W 75 10 22.00	-	142.83 km	88.75 mi	78.03° F
W212AT	212 D	FX	90.3 MHz	LIC	CLARKS SUMMIT	PA US	BLFT-19960903TA	-	49461	0.002 kW		234. m	600. m	21. m	N 41 28 1.00	W 75 41 12.00	-	125.47 km	77.97 mi	49.69° N
WJTL	212 B	FM	90.3 MHz	LIC	LANCASTER	PA US	BLER-19961007KA	-	14467	12. kW	DA	151. m	273. m	56. m	N 40 3 31.00	W 76 27 40.00	-	82.34 km	51.17 mi	157.37° C
NEW	212 A	FM	90.3 MHz	APP	BELLWOOD	PA US	BNPED-20000405ABS	-	123226	0.08 kW	DA	275. m	809. m	38. m	N 40 34 3.00	W 78 26 42.00	1056393	137.66 km	85.54 mi	262.34° F
W212BJ	212 D	FX	90.3 MHz	LIC	WILLIAMSPORT	PA US	BLFT-20000524ABO	-	94016	0.007 kW		0. m	620. m	9. m	N 41 12 38.00	W 76 57 21.00	1208394	52.90 km	32.87 mi	348.88° F
WXLV	212 A	FM	90.3 MHz	CP	SCHNECKSVILLE	PA US	BPED-20070403ACR	-	36983	0.95 kW	DA	190. m	432. m	30. m	N 40 46 10.00	W 75 41 41.00	1200419	96.23 km	59.79 mi	87.89° I
WCRH	213 B	FM	90.5 MHz	LIC	WILLIAMSPORT	MD US	BLER-19820129AE	-	9723	10. kW		268. m	463. m	24. m	N 39 39 34.00	W 77 57 56.00	-	154.18 km	95.80 mi	218.94° C
WVBU-FM	213 A	FM	90.5 MHz	LIC	LEWISBURG	PA US	BLER-19980323KH	-	7722	0.225 kW		-10. m	182. m	22. m	N 40 57 18.00	W 76 52 55.00	-	23.86 km	14.83 mi	350.24° F
NEW	213 D	FX	90.5 MHz	APP	NARBERTH	PA US	BNPFT-19990921AAJ	-	106451	0.027 kW		55. m	119. m	52. m	N 40 2 30.00	W 75 14 24.00	-	156.14 km	97.02 mi	119.51° V
NEW	213 A	FM	90.5 MHz	APP	READING	PA US	BNPED-20000113AAO	-	122287	0.01 kW	DA	231. m	371. m	36. m	N 40 21 17.00	W 75 53 53.00	-	90.24 km	56.07 mi	118.35° N
NEW	213 D	FX	90.5 MHz	APP	NARBERTH	PA US	BNPFT-20000118AEF	-	122318	0.08 kW		20. m	84.1 m	39. m	N 40 2 28.00	W 75 14 38.00	-	155.89 km	96.86 mi	119.59° C
NEW	213 D	FX	90.5 MHz	APP	NARBERTH	PA US	BNPFT-20000118AEF	-	122318	0.08 kW		0. m	84. m	39. m	N 40 2 28.00	W 75 14 38.00	1012388	155.89 km	96.86 mi	119.59° C
NEW	213 D	FX	90.5 MHz	APP	NARBERTH	PA US	BNPFT-19990921AAJ	-	106451	0.027 kW		0. m	119. m	52. m	N 40 2 30.00	W 75 14 24.00	1027110	156.14 km	97.02 mi	119.51° V
WVMM	214 A	FM	90.7 MHz	LIC	GRANTHAM	PA US	BLER-19890531KC	-	41312	0.1 kW		50. m	213. m	41. m	N 40 9 34.00	W 76 59 0.00	-	66.06 km	41.05 mi	191.08° N
W214AL	214 D	FX	90.7 MHz	LIC	DENVER, ETC.	PA US	BLFT-19910702TD	-	65193	0.005 kW	DA	261. m	424. m	0. m	N 40 19 22.00	W 76 11 52.00	-	71.30 km	44.30 mi	130.82° T
WKPS	214 A	FM	90.7 MHz	LIC	STATE COLLEGE	PA US	BLER-19951107KA	-	65471	0.1 kW		26. m	411. m	39. m	N 40 47 58.00	W 77 52 11.00	-	87.69 km	54.49 mi	274.43° T
WCRG	214 A	FM	90.7 MHz	LIC	WILLIAMSPORT	PA US	BLER-20020225ABC	-	93885	3. kW		-66. m	239. m	26. m	N 41 13 50.00	W 77 8 59.00	-	60.29 km	37.47 mi	334.02° S
WRTL	214 A	FM	90.7 MHz	LIC	EPHRATA	PA US	BLER-20000913AAJ	-	65177	0.65 kW	DA	265. m	430. m	26. m	N 40 19 22.00	W 76 11 52.00	-	71.30 km	44.30 mi	130.82° T
WCLH	214 A	FM	90.7 MHz	LIC	WILKES-BARRE	PA US	BLER-20060323AHZ	-	72459	0.175 kW		311. m	686. m	38. m	N 41 10 57.00	W 75 52 15.00	1043700	94.60 km	58.78 mi	58.55° V
W214AC	214 D	FX	90.7 MHz	LIC	YORK	PA US	BLFT-20061107ADO	-	65187	0.019 kW		0. m	244. m	24. m	N 39 56 27.00	W 76 41 58.00	-	89.83 km	55.82 mi	172.69° T
WVLY-FM	265 A	FA	100.9 MHz	USE	MILTON	PA US	---	-	73272	- kW		- m	- m	- m	N 40 57 6.00	W 76 45 3.00	-	24.17 km	15.02 mi	16.72° -
WVLY-FM	265 A	FM	100.9 MHz	LIC	MILTON	PA US	BLH-20020429AAB	-	73272	1.3 kW		218. m	408. m	61. m	N 40 57 12.00	W 76 45 5.00	1029798	24.34 km	15.12 mi	16.49° S
NEW	265 D	FX	100.9 MHz	APP	HALIFAX	PA US	BNPFT-20030317GKF	-	144162	0.01 kW		0. m	328. m	81. m	N 40 27 24.00	W 76 54 2.00	1057211	32.33 km	20.09 mi	190.06° F

Both IF Stations are beyond the 10km requirement for the class of stations considered here.

The Preliminary FM Search above lists the FM stations, allotments, and rulemakings that the FCC will consider during review of an FM broadcast station construction permit application. The Preliminary FM Search checks distances only, depending depending on the frequency difference:

0 MHz difference (cochannel):	Search radius: 310 km
0.2 MHz difference (first adjacent channel):	Search radius: 250 km
0.4 MHz difference (second adjacent channel):	Search radius: 160 km
0.6 MHz difference (third adjacent channel):	Search Radius: 120 km
53 or 54 channels (IF Channel):	Search Radius: 50 km

No contour protection analysis or community of license coverage analysis is performed. The Commission may consider additional station records that might not appear on this list as necessary. Refer to the [FM spacing tables](#) in [Section 73.207](#) for the spacings governing FM commercial stations.

*** 80 FM Records within the FM Preliminary Study distance of 40° 44' 35.80" N, 76° 50' 1.40 " W ***

Related Nonbroadcast Facilities: ULS Search

Using a broadcast station's facility ID number, you may search in the WTB's ULS database for nonbroadcast station records that are related to radio and TV broadcast stations, such as microwave facilities. Use the [ULS Radio Services List](#) to determine the nonbroadcast station's service. Not every AM, FM, or TV broadcast station will have related nonbroadcast operations.

Facility ID Number

Search ULS

Clear

Output will appear in a new browser window. [Alternate Form](#)

[Return to FM Query Data Entry screen](#)

Quick Links to Audio Division Information

Retrieve

FCC Home		Search		Updates		E-Filing		Initiatives		For Consumers		Find People
--------------------------	--	------------------------	--	-------------------------	--	--------------------------	--	-----------------------------	--	-------------------------------	--	-----------------------------

Please send comments via standard mail to the Federal Communications Commission, Consumer and Governmental Affairs Bureau, 445 12th Street, S.W., Washington, D.C., 20554. Questions can also be answered by calling the FCC's National Call Center, toll free, at 1-888-Call FCC (1-888-225-5322).

Federal Communications Commission
445 12th Street SW
Washington, DC 20554
[More FCC Contact Information...](#)

Phone: 1-888-CALL-FCC (1-888-225-5322)
TTY: 1-888-TELL-FCC (1-888-835-5322)
Fax: 1-866-418-0232
E-mail: fccinfo@fcc.gov

- [Privacy Policy](#)

- [Website Policies & Notices](#)

- [Required Browser Plug-ins](#)

- [Freedom of Information Act](#)

http://www.fcc.gov/fcc-bin/fmq?allo=1&cfre=90.1&dlat2=40&mlat2=44&slat2=35.8&NS=N&dlon2=76&mlon2=50&slon2=01.4&EW=W&list=2&serv=&vac=&size=8

10/14/2007