

Exhibit 13.1 Copy of USGS Topographic Photo-Map

Proposed Site

39° 46' 21" NL

85° 45' 11" WL

NAD 1927

(39-46-21.1NL; 85-45-11.0WL NAD83)

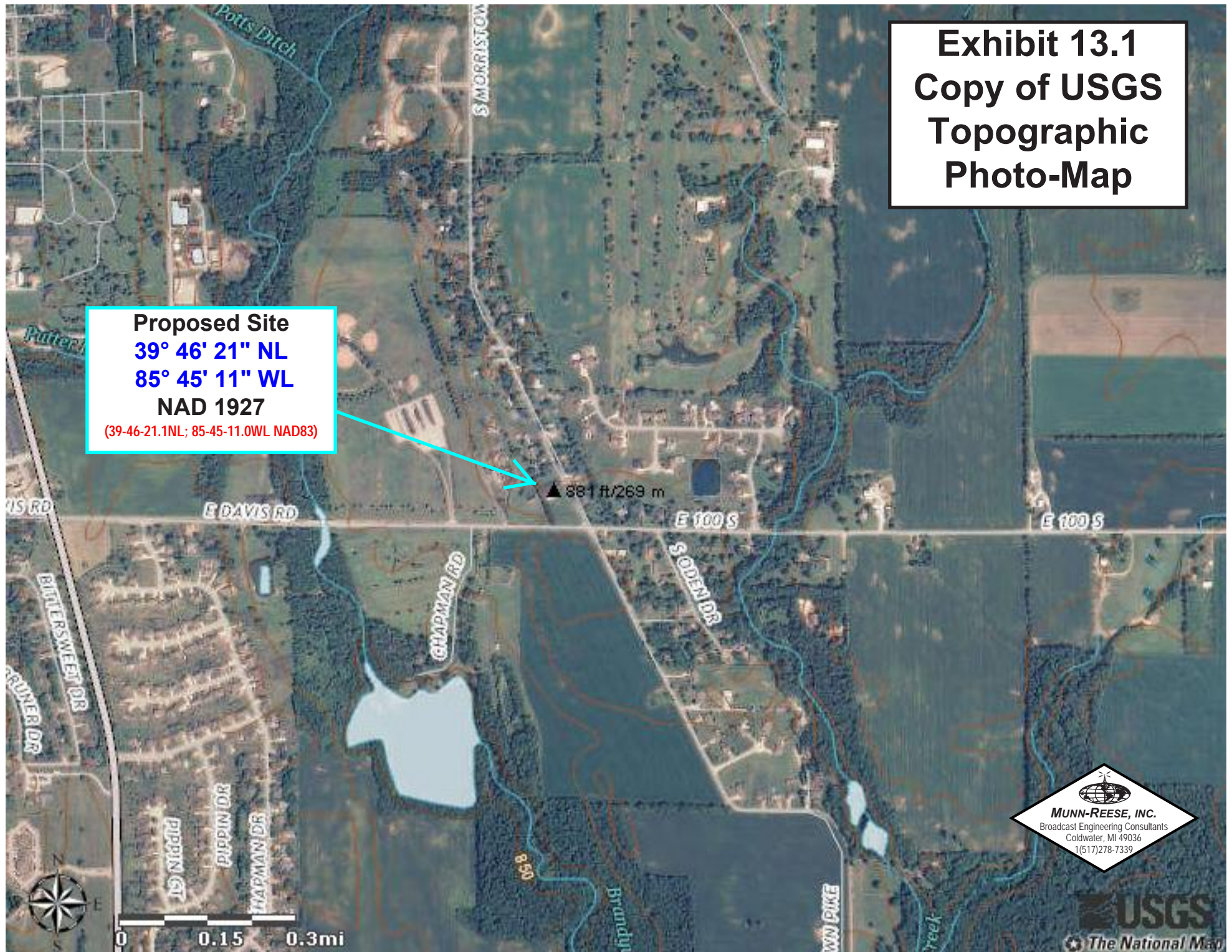


Exhibit 13.2

Vertical Plan of Antenna System

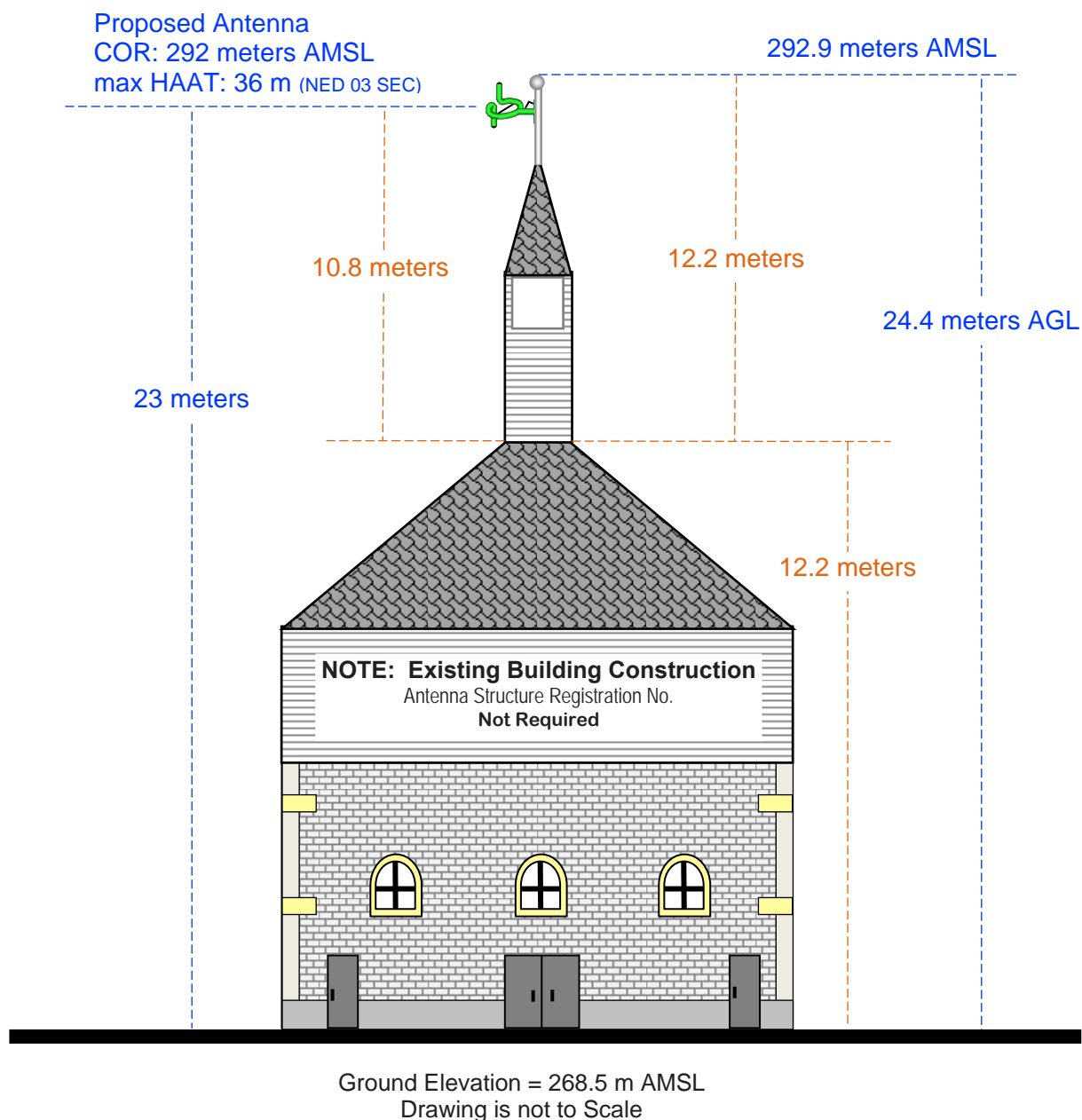
The site is located at 936 Morristown Pike;
the city of Greenfield, Hancock County, Indiana.

Site Location (NAD 27)

NL: 39° 46' 21"

WL: 85° 45' 11"

(39-46-21.1NL; 85-45-11.0WL NAD1983)



MUNN-REESE, INC.

Broadcast Engineering Consultants
Coldwater, MI 49036

Terrain

228

314 m

NED 03 SEC Terrain Database
US Census 2010 PL Database

Exhibit 13.3 Present vs. Proposed Service Contour Study

Long-Form 60 dBμ F(50:50) Contour
Short-Form 60 dBμ F(50:50) Contour

CH296D.long-form
Greenfield, IN
Proposed Operation
Facility ID: 148567
Latitude: 39-46-21 N
Longitude: 085-45-11 W
ERP: 0.17 kW
Channel: 296D
Frequency: 107.1 MHz
AMSL Height: 292.0 m
Horiz. Pattern: Omni

60 dBμ Contour
Total Population: 24,178
Total Area: 137 sq. km

CH296D.short-fom
Greenfield, IN
BNPFT20030317KXI
Facility ID: 148567
Latitude: 39-46-21 N
Longitude: 085-45-10 W
ERP: 0.17 kW
Channel: 296D
Frequency: 107.1 MHz
AMSL Height: 296.0 m
Horiz. Pattern: Omni

60 dBμ Contour
Total Population: 24,468
Total Area: 143 sq. km

Spring Lake

Greenfield

CH296D.long-form
CH296D.short-fom

ew Palestine

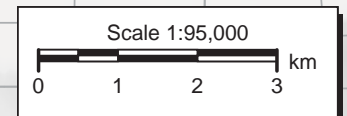
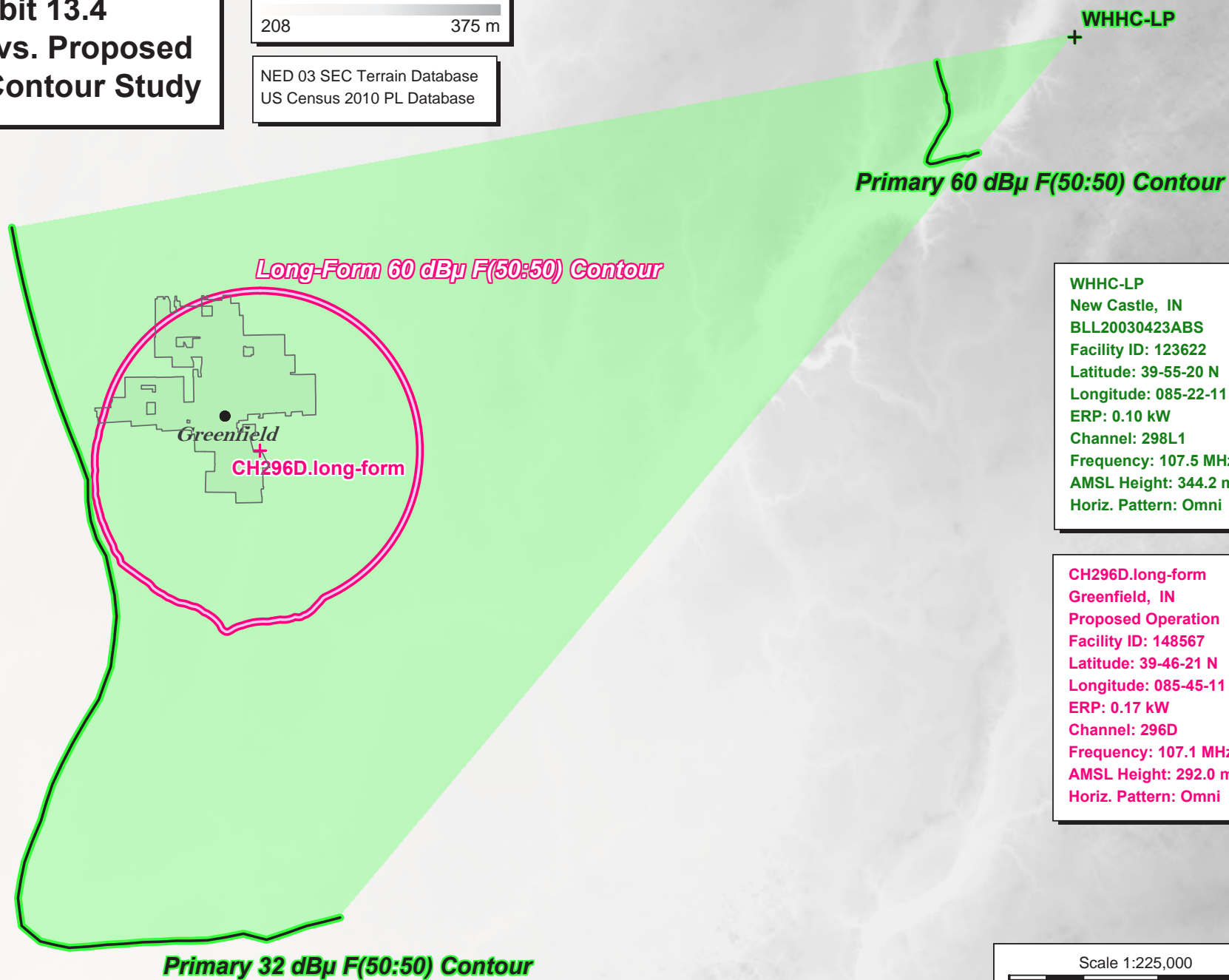


Exhibit 13.4 Present vs. Proposed Service Contour Study

Terrain
208 375 m

NED 03 SEC Terrain Database
US Census 2010 PL Database



WHHC-LP
New Castle, IN
BLL20030423ABS
Facility ID: 123622
Latitude: 39-55-20 N
Longitude: 085-22-11 W
ERP: 0.10 kW
Channel: 298L1
Frequency: 107.5 MHz
AMSL Height: 344.2 m
Horiz. Pattern: Omni

CH296D.long-form
Greenfield, IN
Proposed Operation
Facility ID: 148567
Latitude: 39-46-21 N
Longitude: 085-45-11 W
ERP: 0.17 kW
Channel: 296D
Frequency: 107.1 MHz
AMSL Height: 292.0 m
Horiz. Pattern: Omni

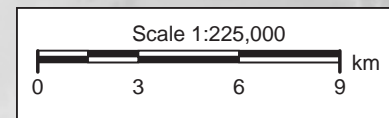


Exhibit 13.5

Tabulation of Proposed Allocation

Radio 74 Internationale											
REFERENCE		CH# 296D - 107.1 MHz, Pwr= 0.17 kW, HAAT= 22.7 M, COR= 292 M								DISPLAY DATES	
39 46 21.0 N.		Average Protected F(50-50)= 6.44 km								DATA 08-06-13	
85 45 11.0 W.		Omni-directional								SEARCH 08-06-13	
CH CITY	CALL	TYPE STATE	ANT	AZI <--	DIST FILE #	LAT LNG	PWR(kW) HAAT(M)	INT(km) COR(M)	PRO(km) LICENSEE	*IN* (Overlap in km)	*OUT*
296D Greenfield	1550276	APP _C_ IN		90.0 270.0	0.02 BNPFT20030317KXI	39 46 21.0 85 45 10.0	0.170	23.4 296	7.0 Radio 74 Internationale	-29.8*<	-28.4*<
296A Danville	WEDJ	LIC _CN IN		272.9 92.4	70.15 BMLH19990607KB	39 48 06.0 86 34 24.0	1.800 184	82.2 462	28.7 Continental Broadcast Group	-18.6*<	19.5
297B1 Greensburg	WRZQ-FM	LIC _CN IN		179.5 359.5	60.71 BLH19971030KB	39 13 35.0 85 44 47.0	10.500 152	56.2 367	43.1 Reising Radio Partners Inc	-2.4<	5.9
From Channel 297B											
295B Marion	WXXC	LIC _CN IN		5.1 185.2	92.12 BLH19830418AS	40 35 52.0 85 39 21.0	50.000 152	78.4 408	65.3 Hoosier Am/fm, Lic	7.3	13.9
GRANDFATHERED AT 50KW@152M HAAT											
294A Greenwood	WTLC-FM	LIC _CX IN		258.7 78.5	34.25 BLH20070504AAL	39 42 42.0 86 08 45.0	6.000 99	2.5 331	25.1 Radio One Of Indiana, Lic	25.0	8.2
294D Knightstown	1550275	APP _C_ IN		85.4 265.6	20.42 BNPFT20030317KYH	39 47 13.0 85 30 53.0	0.250	1.1 309	7.1 Radio 74 Internationale	12.9	12.4
243D Shelbyville	W243CL	LIC _C_ IN		183.5 3.5	23.85 BLFT20080624ABR	39 33 29.0 85 46 13.0	0.150 96	13.7 338	92.0 3 Towers Broadcasting Comp	9.5R	14.4M
298D Indianapolis	W298BB	LIC _C_ IN		289.5 109.2	40.96 BLFT20130208AAE	39 53 40.0 86 12 21.0	0.233	1.1 519	21.5 Emmis Radio License, Lic	33.5	18.5
296D Connersville	W296BA	LIC _C_ IN		105.9 286.3	54.06 BLFT20070406AAJ	39 38 15.0 85 08 45.0	0.250 -5	23.8 282	7.1 Rodgers Broadcasting Corp.	23.9	25.5
242A Indianapolis	WHHH	LIC _CN IN		270.7 90.4	34.24 BLH19960911KB	39 46 32.0 86 09 10.0	3.300 87	13.7 322	92.0 Radio One Of Indiana, Lic	9.5R	24.7M
296B1 Milford	WKFS	LIC _CN OH		123.8 304.6	129.84 BMLH19981125KA	39 06 59.0 84 30 07.0	2.800 264	95.5 483	41.9 Citicasters Licenses, Inc.	27.9	62.2
297D Arcadia	W297AU	LIC _C_ IN		339.5 159.4	44.73 BLFT20071009AAC	40 08 57.0 85 56 15.0	0.010 14	4.4 265	3.2 Indiana Community Radio Co	33.9	32.4
293B Greenville	WDSJ	LIC _CN OH		66.5 247.2	105.93 BLH19901105KD	40 08 49.0 84 36 36.0	50.000 146	5.6 460	62.4 Aloha Station Trust, Lic	93.9	41.9
Terrain database is NED 03 SEC , R= 73.215 qualifying spacings or FCC minimum Spacings in KM, M= Margin in KM											
Contour distances are on direct line to and from reference station. Reference zone= East Zone, Co to 3rd adjacent.											
All separation margins (if shown) include rounding											
Ant Column: (D= DA Standard, Z= DA 73.215, N= Not DA 73.215, _= Omni), Polarization (C,H,V,E), Beamtilt(Y,N,X)											
"*"affixed to 'IN' or 'OUT' values = site inside protected contour.											
« = Station meets FCC minimum distance spacing for its class.											
< = Contour Overlap											

Green Text denotes the Auction 83 Application facility to be modified by this Form 349 Long-Form filing. This facility need not be protected.