

## Exhibit 23.2

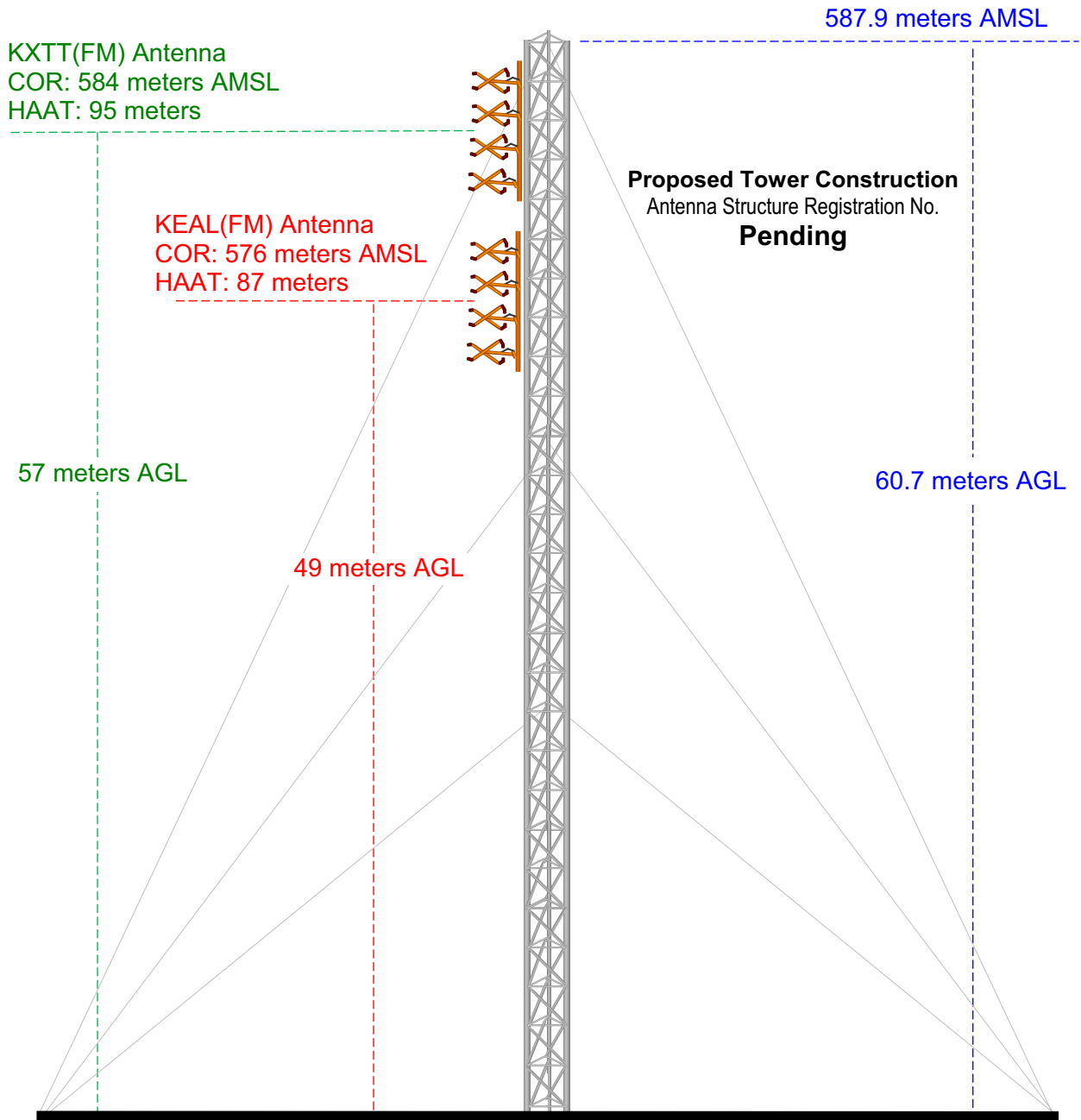
### Vertical Plan of Antenna System

The site is located at  
A.P.N. 198-310-02, SW/4, SEC. 36, T.32S., R.23E.,  
Kern County, California.

Site Location (NAD 27)

NL: 35° 05' 39"

WL: 119° 27' 40"



Ground Elevation = 527.2 m AMSL

Drawing is not to Scale

**MUNN-REESE, INC.**

Broadcast Engineering Consultants  
Coldwater, MI 49036

## Exhibit 23.3

### Proposed FM Operating Specifications

---

**Call:** KEAL(FM)

**Licensee:** Lazer Licenses, LLC.

**City of License:** Taft, CA

**Frequency:** 106.5 MHz    **Channel:** 293A    **ERP:** 6.0 kW    **HAAT:** 87 m

**Transmitter Location:** A.P.N. 198-310-02, SW/4, SEC. 36,T.32S., R.23E.

**County:** Kern

**State:** California

**Site Coordinates:** NL: 35° 05' 39"; WL: 119° 27' 40"

**Tower Registration Number:** Pending

**Proposed Operation:** Class A

**Effective Radiated Power:** 6.0 kW (H)    6.0 kW (V)

**Height of Antenna Radiation Center Above:**

	<u>Average Terrain</u>	<u>Mean Sea Level</u>	<u>Ground</u>
<b>Horizontal</b>	87 meters	576 meters	49 meters
<b>Vertical</b>	87 meters	576 meters	49 meters

**Elevation of Tower Site** : 527.2 meters AMSL

**Overall Height of Structure Above Ground** : 60.7 meters AGL

**Overall Height of Structure Above Mean Sea Level:** 587.9 meters AMSL



**KEAL.P**  
Proposed Operation  
Latitude: 35-05-39 N  
Longitude: 119-27-40 W  
ERP: 6.00 kW  
HAAT: 87 m  
Channel: 293  
Frequency: 106.5 MHz  
AMSL Height: 576.0 m  
Horiz. Pattern: Omni  
Vert. Pattern: No  
Prop Model: None

**70 dBu Contour**  
Total Population: 19,742  
Total Area: 1489.75 sq. km

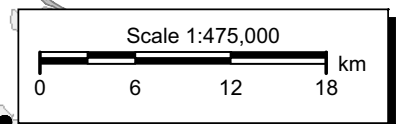
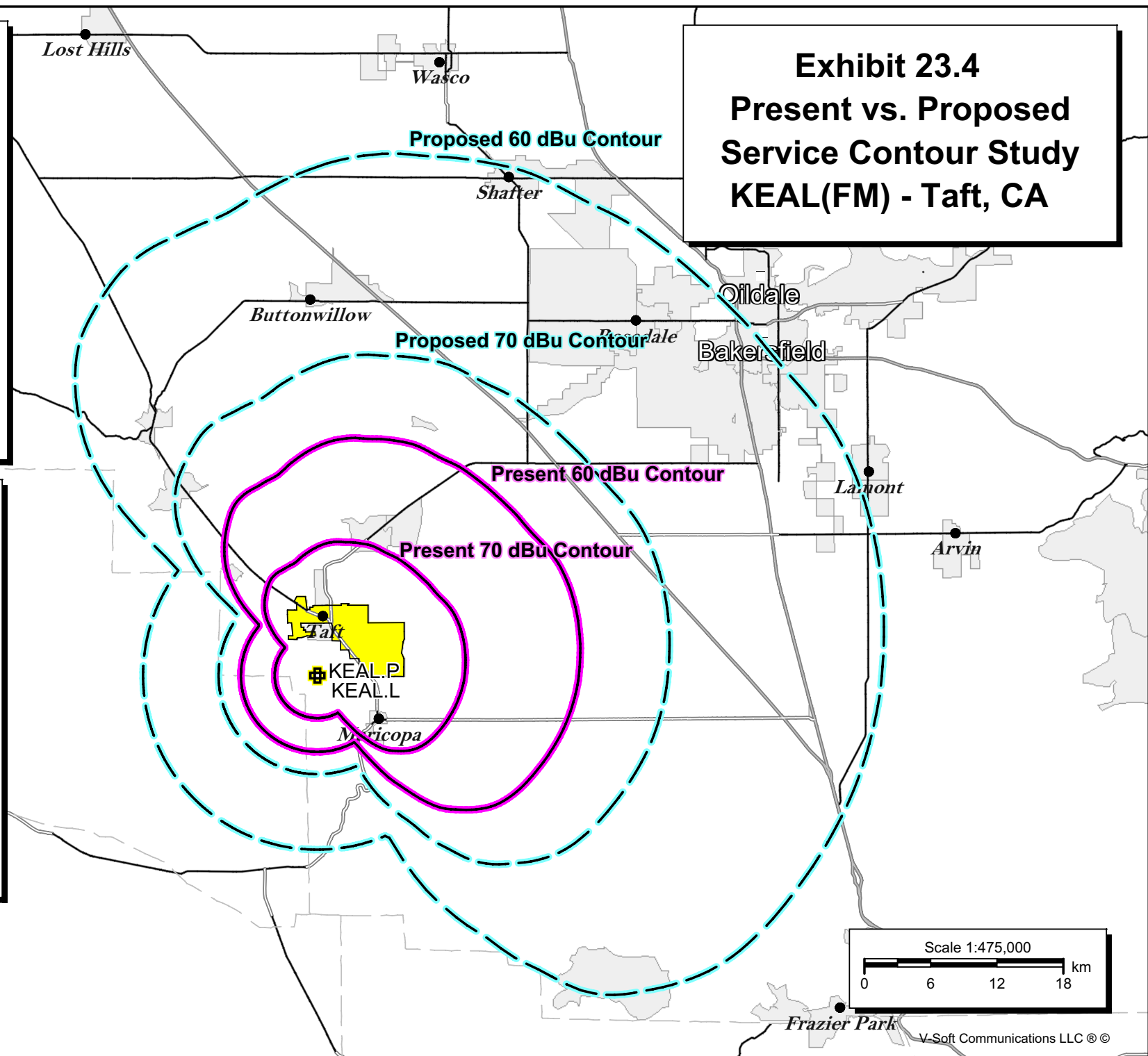
**60 dBu Contour**  
Total Population: 262,143  
Total Area: 4024.41 sq. km

**KEAL.L**  
Proposed Operation  
Latitude: 35-05-39 N  
Longitude: 119-27-40 W  
ERP: 0.225 kW  
Channel: 293  
Frequency: 106.5 MHz  
AMSL Height: 532.0 m  
Horiz. Pattern: Omni  
Vert. Pattern: No  
Prop Model: None

**70 dBu Contour**  
Total Population: 17,517  
Total Area: 254.11 sq. km

**60 dBu Contour**  
Total Population: 18,887  
Total Area: 803.22 sq. km

## Exhibit 23.4 Present vs. Proposed Service Contour Study KEAL(FM) - Taft, CA



# Exhibit 23.5 - HAAT Calculation per FCC Website



[FCC Home](#) | [Search](#) | [Updates](#) | [E-Filing](#) | [Initiatives](#) | [For Consumers](#) | [Find People](#)

**Audio Division**

(202)-418-2700

**Antenna Height Above Average Terrain (HAAT) / Contour Calculations**

[FCC](#) > [MB](#) > [Audio Division](#) > [HAAT/Contour Calculations](#)

[FCC site map](#)

## Antenna Height Above Average Terrain Calculations -- Input

Latitude **35 5 39.0 North**

Longitude **119 27 40.0 West** (NAD 27)

Height of antenna radiation center above mean sea level [RCAMSL] = **576.0** meters

Number of Evenly Spaced Radials = 8 0° is referenced to True North

## Results:

**Calculated HAAT= 87. meters**

(Antenna Height Above Average Terrain)  
using 1 km GLOBE terrain data)

## Antenna Radiation Center Heights Above Individual Radials:

0.0°	291.2 meters
45.0°	356.5 meters
90.0°	387.1 meters
135.0°	217.3 meters
180.0°	-179.4 meters
225.0°	-289.8 meters
270.0°	-205.3 meters
315.0°	115.8 meters

## New Antenna Height Above Average Terrain (HAAT) calculation?

---

[FCC Home](#) | [Search](#) | [Updates](#) | [E-Filing](#) | [Initiatives](#) | [For Consumers](#) | [Find People](#)

---

Federal Communications Commission  
445 12th Street SW  
Washington, DC 20554

Phone: 1-888-CALL-FCC (1-888-225-5322)  
TTY: 1-888-TELL-FCC (1-888-835-5322)  
Fax: 1-866-418-0232

- [Privacy Policy](#)  
- [Website Policies & Notices](#)  
- [Required Browser Plug-ins](#)