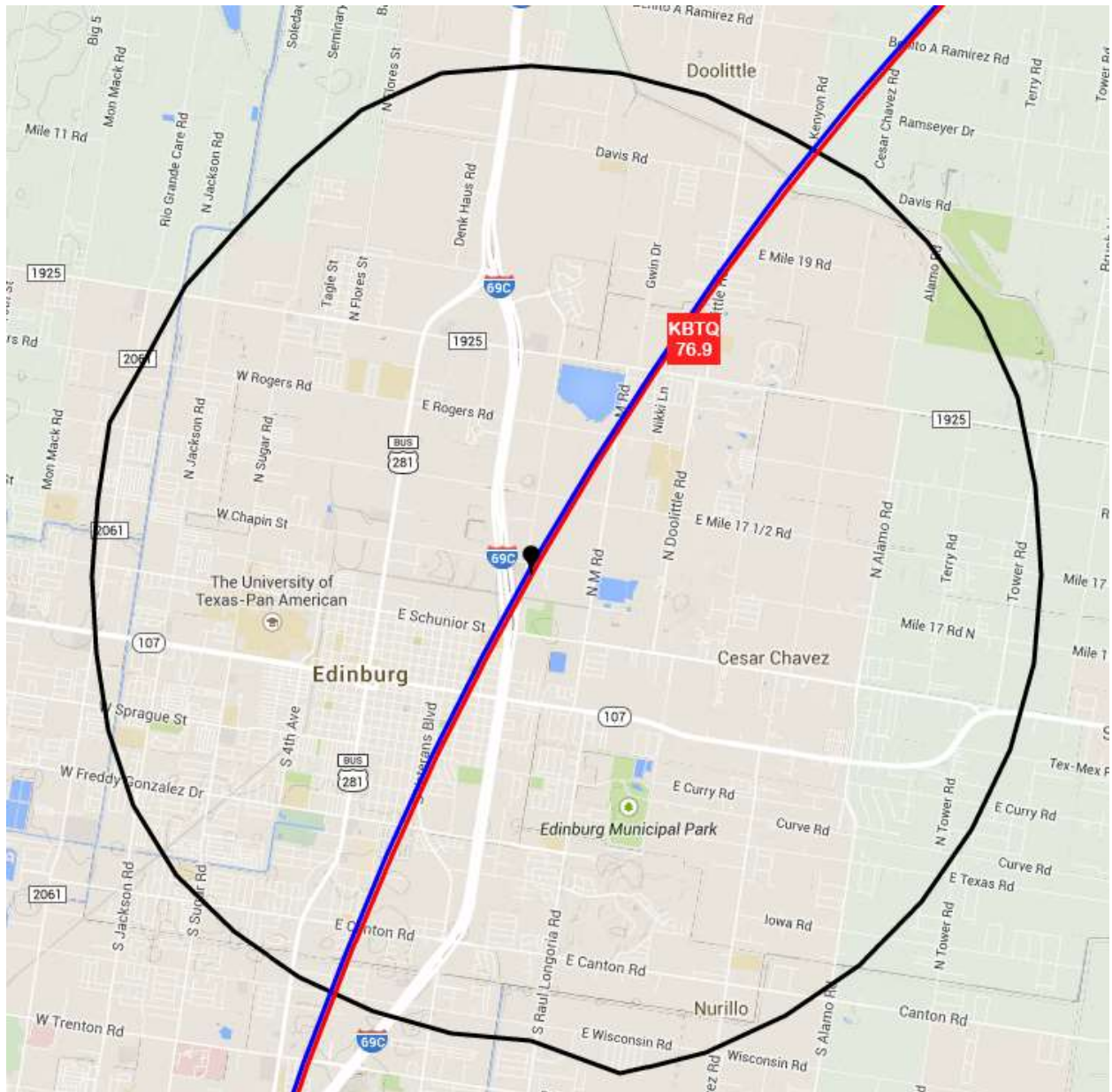




**REC Networks**  
11541 Riverton Wharf Rd.  
Mardela Springs, MD 21837  
844.REC.LPFM/202.621.2355  
recnet.com

Amendment for NEW-LP  
EDINBURG, TX  
**ROSALINDA C. RAABE MINISTRIES**  
BNPL-20131114BUI

## **PROPOSED 60dBu F(50,50) SERVICE CONTOUR**



EDINBURG, TX – Chan 239L1 (95.7 MHz) ~ ERP 0.031 kW  
Elev: 29 meters ~ RCAGL: 50 meters ~ RCAMSL: 79 meters ~ HAAT: 53 meters  
Overall tower height: 61.0 meters – ASR: Not required (no nearby airport)  
NAD27 Latitude: 26° 18' 42.0" NL – Longitude: 98° 8' 35.4" WL

NAD27 LATITUDE: 26 - 18' 42.0" - LONGITUDE: 98 - 08' 35.4"  
CHANNEL: 239 - CLASS: LPFM(LP-100)

CHAN	FREQ	CALL	LOCATION	CLS	DIST	REQ	CLEAR	BEAR
236 :	95.1	KRGX INVESTMENTS, LLC	RIO GRANDE CITY	TX A	79.6	0.0	79.6	280.0
237 :	95.3	XHRT	REYNOSA	TA AA	29.0	29.0	0.0	206.7
237 :	95.3	KZSP MBM TEXAS VALLEY LLC	SOUTH PADRE ISLAND	TX A	97.3	29.0	68.3	107.0
238 :	95.5	KZFM MALKAN INTERACTIVE	CORPUS CHRISTI COMMUNICATIONS, L.L.C.	TX C0	159.8	111.0	48.8	20.6
239 :	95.7	XHRKFM	MONTERREY	NL C	230.1	110.0	120.1	252.0
239 :	95.7	XHBKFM	NUEVO LAREDO	TA A	188.1	43.0	145.1	314.6
239 :	95.7	XHRKFM	MONTERREY	NL C	230.1	110.0	120.1	252.0
239 :	95.7	K239BM MARY V. GUTHRIE	BROWNSVILLE	TX D	73.3	32.0	41.3	121.7
239 :	95.7	XHBKFM	NUEVO LAREDO	TA A	188.1	43.0	145.1	314.6
241 :	96.1	KBTQ TICHENOR LICENSE CORPORATION	HARLINGEN	TX C	36.8	93.0	-56.2	119.4
241 :	96.1	KBTQ TICHENOR LICENSE CORPORATION	HARLINGEN	TX C	36.8	93.0	-56.2	119.4
242 :	96.3		SAN RAFAEL	TA A	163.3	25.0	138.3	293.6

## **LPFM SECOND ADJACENT CHANNEL WAIVER STUDY**

Edinburg, TX  
Channel 239L1 (95.7 MHz)

Based on a study performed by Michelle Bradley of REC Networks, it has been determined that this proposed site qualifies for a second adjacent waiver as specified in Section 73.807(e) of the Commission's Rules.

Station KBTQ, Harlingen, TX (Facility ID # 67072) operates on Channel 241C and is located 36.8 km from the proposed LPFM site. KBTQ operates 100 kW at 299.9 m HAAT towards the proposed LPFM station. KBTQ places a 76.9 dBu service contour at the proposed LPFM site.<sup>1</sup>

The proposed LPFM station will operate from a radiation center of 50 meters above ground level which places the radiation center at 53 meters above average terrain. This requires the proposed station to operate at 31 watts in order to meet the maximum service contour allowed by §73.811(a) of the Commission's Rules.

Using the U/D method<sup>2</sup>, we have determined that the prohibited overlap goes as far as the 116.9 dBu F(50, 10) interference contour of the proposed LPFM station. Using the free-space method and with an ERP of 31 watts, the contour is measured at 56 meters from the radiation center of the antenna. At ground level, the contour extends to 25.219 meters from the base of the tower. As indicated on the map in Appendix A, the 116.9 dBu interference contour at ground level does not reach any occupied structures and does not overlap any public roads. There are no tall structures within the sphere from the radiation center.

Therefore, based on the information presented, REC submits that the proposed LPFM station will not create any interference to existing or potential listeners of second adjacent channel station KBTQ. The applicant requests a waiver of §73.807(c) in respect to KBTQ.<sup>3</sup>

Report completed by  
Michelle Bradley  
Founder, REC Networks  
December 24, 2014

---

<sup>1</sup> - KBTQ also has a granted construction permit, BPH-20140219ABW which increases the antenna height at the same location. With the improved facilities, KBTQ would operate 100 kW at 450.9 m HAAT towards the proposed LPFM station with an 80.7 dBu field strength. Because the LPFM interference contour based on KBTQ's improved facility is completely encompassed by KBTQ's currently licensed facility (BMLH-20050309ADA), we will base our study on the licensed facility with the larger interference contour.

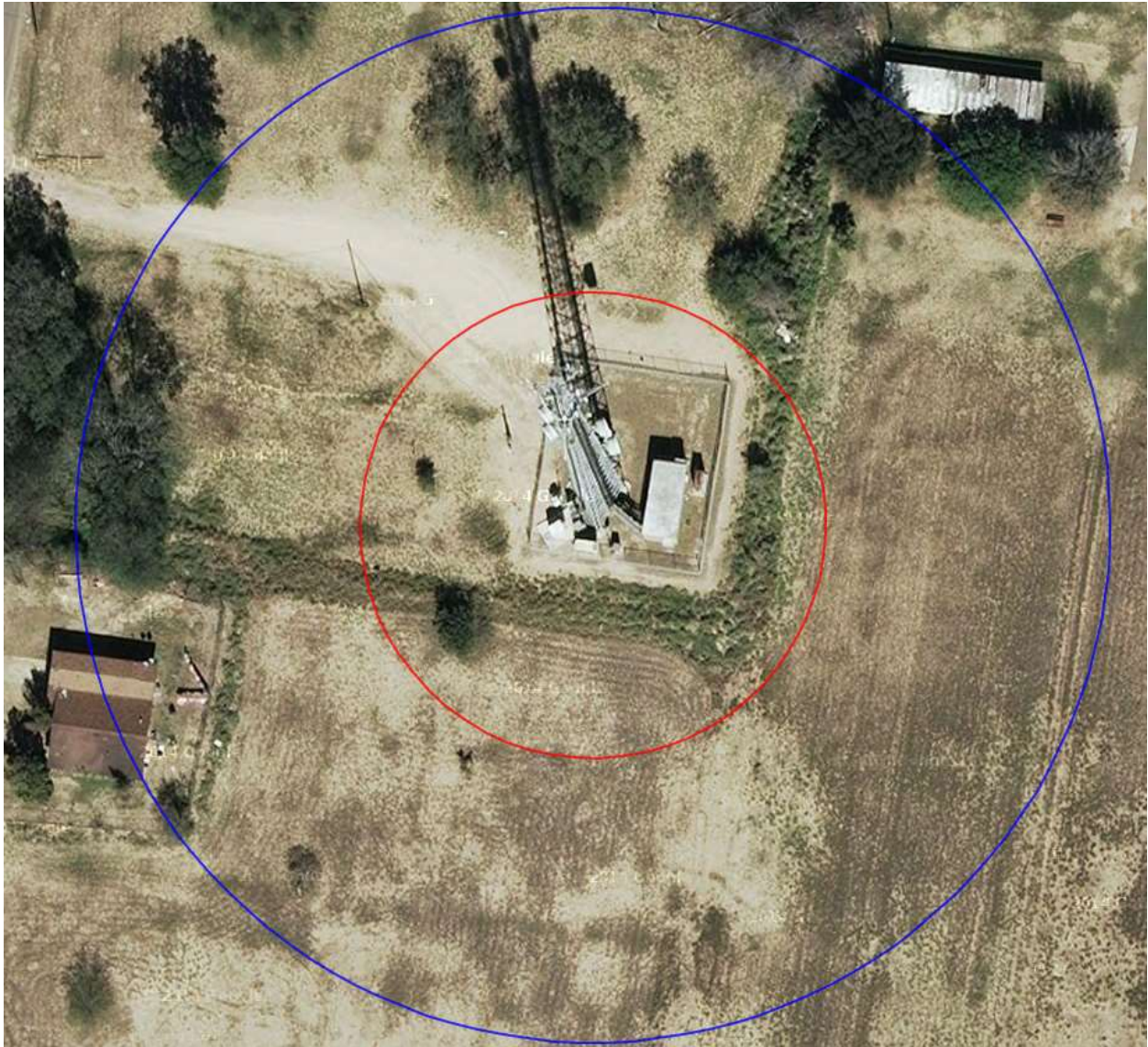
<sup>2</sup> - See *Living Way Ministries, Inc.* Memorandum Opinion and Order, 17 FCC Rcd 17054, 17056 (2002) at 5. *Recon denied* 23 FCC Rcd 15070 (2008).

<sup>3</sup> - In addition, we do note that the proposed LPFM station is within 3km of directional AM station KURV (Facility ID # 70463). The tower that the proposed LPFM station will operate on is 51.97 electrical degrees in respect to KURV. The proposed LPFM tower is a well-established American Tower-owned facility and that the establishment of the LPFM does not constitute a "significant modification" under 47 C.F.R. §1.30004.



## APPENDIX A

### PROPOSED TOWER SITE



The BLUE CURVE is the 116.9 dBu interference contour from the radiation center.

The RED CURVE is the 116.9 dBu interference contour at ground level.

The red curve does not reach any occupied structures.