

FCC TOWER REGISTRATION NOT REQUIRED

FAA NOTIFICATION NOT REQUIRED

DETERMINATION Results

Structure does not require registration. There are no airports within 8 kilometers (5 miles) of the coordinates you provided.

Your Specifications

NAD83 Coordinates

Latitude	48-22-39.7 north
Longitude	116-37-08.7 west

Measurements (Meters)

Overall Structure Height (AGL)	24
Support Structure Height (AGL)	24
Site Elevation (AMSL)	1763

Structure Type

GTOWER - Guyed Structure Used for Communication Purposes



FAA NOTIFICATION AND/OR FCC TOWER REGISTRATION

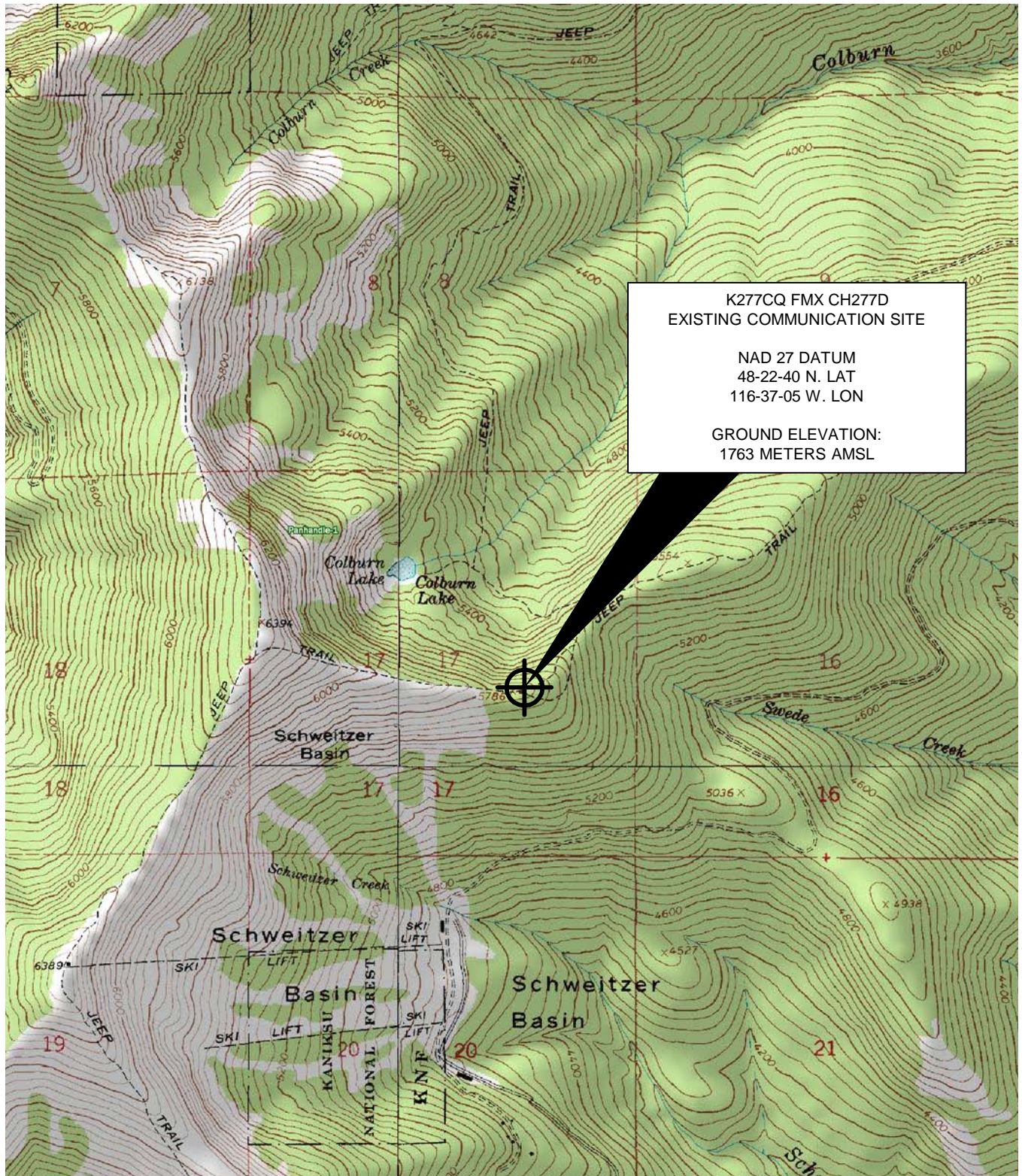
CH K277CQ (FMX)
SANDPOINT, IDAHO

**FIGURE
1**

GAITHERSBURG, MARYLAND U.S.A

SIZE A	FSCM NO N/A	DWG NO 20130829SANDPOINTCH277	REV NONE
SCALE N/A	JANUARY 2015		SHEET

(C) 2013, ALL RIGHTS RESERVED



FM TRANSLATOR TRANSMITTER SITE TOPOGRAPHIC MAP OF SITE

**CHANNEL K277CQ
SANDPOINT, IDAHO**

**FIGURE
1**

GAITHERSBURG, MARYLAND U.S.A

SIZE
A

FSCM NO
N/A

DWG NO
20130829SANDPOINTCH277

REV
NONE

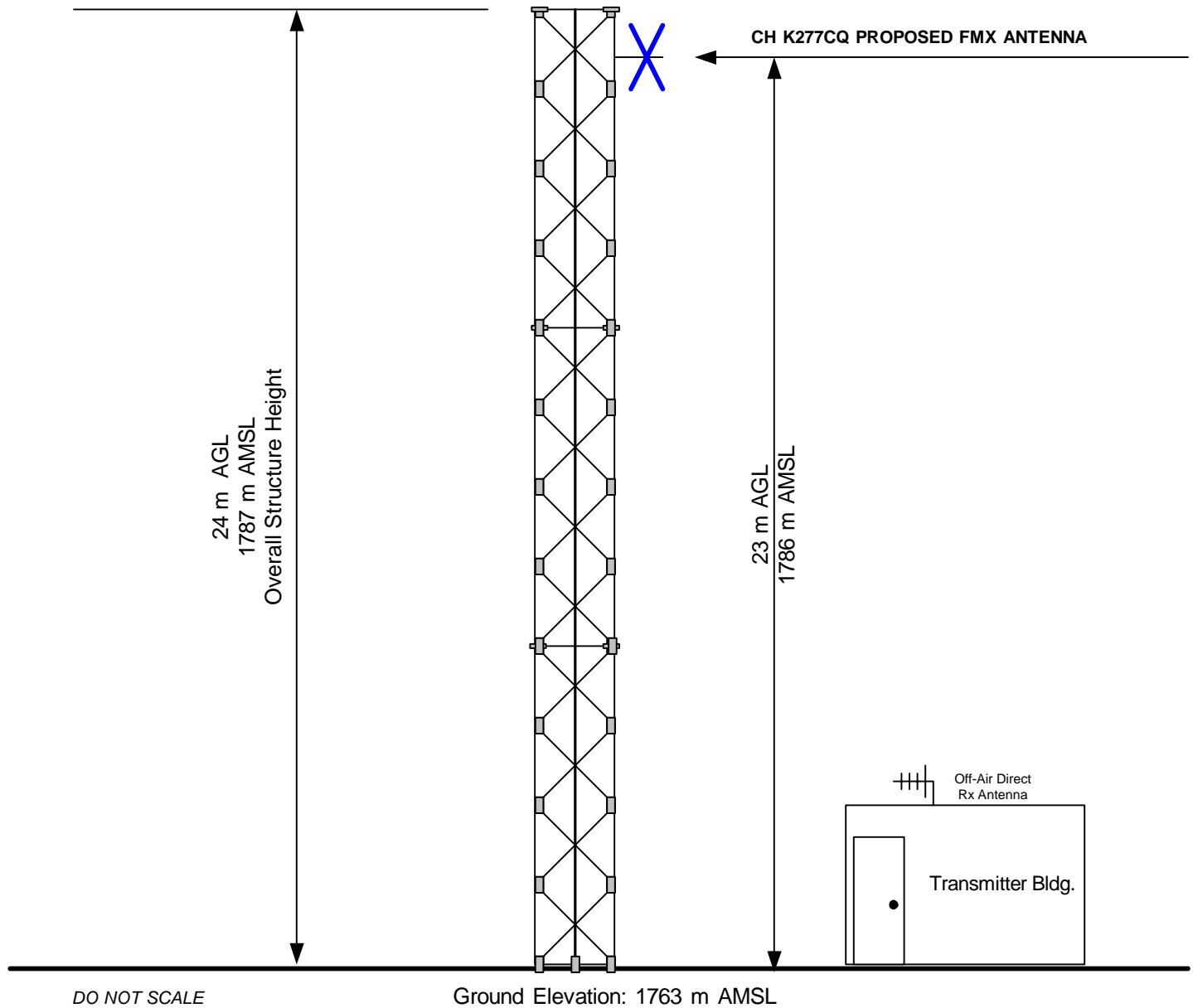
(c) 2013, ALL RIGHTS RESERVED

SCALE 1:24,000

JANUARY 2015

SHEET

This is an existing structure.
 Proposal is exempt from Section 106 NHPA processing
 No increase in structure height - FAA notification not require
 FCC Tower Registration Not Required



VERTICAL SKETCH OF SUPPORTING STRUCTURE

CH K277CQ (FMX)
 SANDPOINT, IDAHO

**FIGURE
2**

GAITHERSBURG, MARYLAND U.S.A

SIZE
A

FSCM NO
N/A

DWG NO
20130829SANDPOINTCH277F2

REV

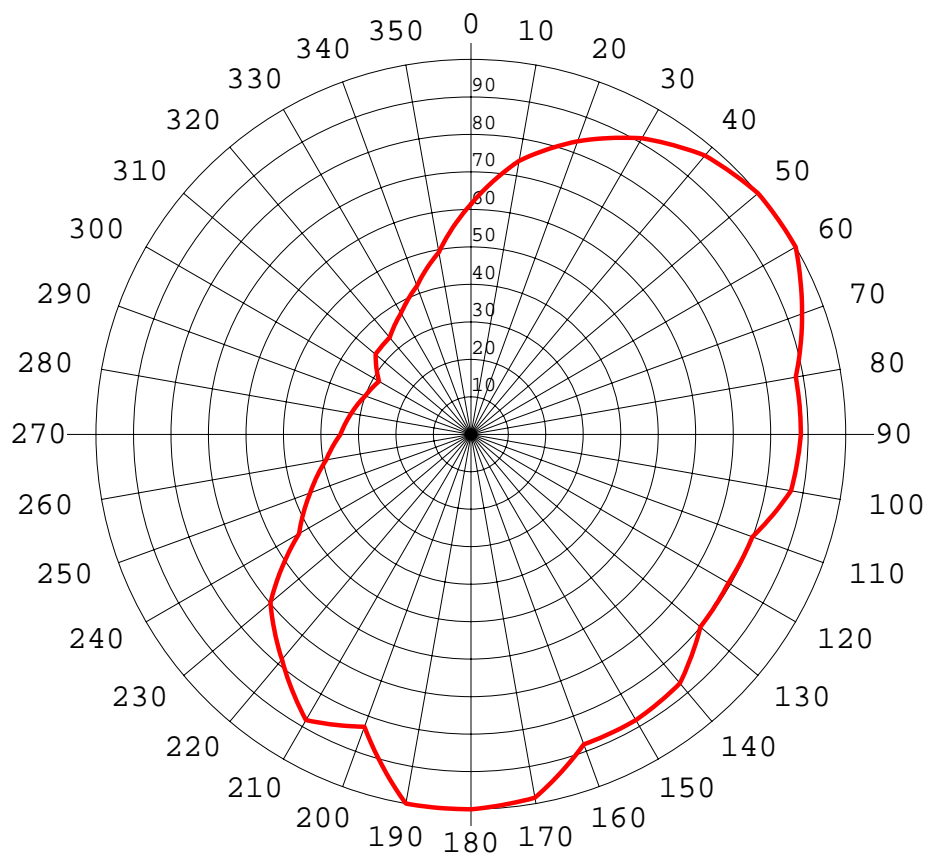
(c) 2013, ALL RIGHTS RESERVED

SCALE NO SCALE

JANUARY 2015

SHEET

K277CQ DIRECTIONAL PATTERN FIGURE 3



Azi	Rel	kW	dB
0	0.614	0.005	-4.24
10	0.741	0.008	-2.60
20	0.832	0.010	-1.60
30	0.912	0.012	-0.80
40	0.971	0.013	-0.26
50	1.000	0.014	0.00
60	1.000	0.014	0.00
70	0.940	0.012	-0.54
80	0.880	0.011	-1.11
90	0.880	0.011	-1.11
100	0.867	0.011	-1.24
110	0.799	0.009	-1.95
120	0.793	0.009	-2.01
130	0.799	0.009	-1.95
140	0.867	0.011	-1.24
150	0.880	0.011	-1.11
160	0.880	0.011	-1.11
170	0.984	0.014	-0.14

Azi	Rel	kW	dB
180	1.000	0.014	0.00
190	1.000	0.014	0.00
200	0.830	0.010	-1.62
210	0.880	0.011	-1.11
220	0.784	0.009	-2.11
230	0.698	0.007	-3.12
240	0.529	0.004	-5.53
250	0.456	0.003	-6.82
260	0.392	0.002	-8.13
270	0.348	0.002	-9.17
280	0.324	0.001	-9.79
290	0.300	0.001	-10.46
300	0.283	0.001	-10.96
310	0.332	0.002	-9.58
320	0.337	0.002	-9.45
330	0.373	0.002	-8.57
340	0.421	0.002	-7.51
350	0.493	0.003	-6.14

KTPO - LIC (PRIMARY)

BLH20070109AAS
FCC Facility ID: 164177
Latitude: 48-13-45 N
Longitude: 116-30-30 W
ERP: 1.30 kW
Channel: 294 Frequency: 106.7 MHz
Antenna HAAT Height: 353.0 m
Antenna AMSL Height: 1097.0 m
Antenna AGL Height: 9.1 m
Ground Elevation: 1087.9 m
Horiz. Pattern: Omni

K277CQ.CP MOD FMX

BNPFT20130830ANR
FCC Facility ID: 157000
Latitude: 48-22-40 N
Longitude: 116-37-05 W
ERP: 0.014 kW
Channel: 277 Frequency: 103.3 MHz
Antenna HAAT Height: 725.8 m
Antenna AMSL Height: 1786.0 m
Antenna AGL Height: 23.0 m
Ground Elevation: 1763.0 m
Horiz. Pattern: Directional

K277CQ MOD OF CP

PREDICTED SERVICE AND INTERFERENCE CONTOURS

FIGURE 3

FCC 34 DBU F(50,10)

CONTOUR DOES NOT ENTER CANADA

PROPOSED 60 DBU F(50,50)

FCC SERVICE CONTOUR

KTPO PRIMARY STATION

FCC 60 DB F(50,50) CONTOUR

PROPOSED INTERFERENCE CONTOUR

FCC 54 DBU F(50,10) CONTOUR
TO KCDA 1ST ADJ CHANNEL

KCDA 1ST ADJ CHANNEL

PROTECTED SERVICE CONTOUR
FCC 60 DBU F(50,50)

KCDA

BLH20030908ACL
FCC Facility ID: 57625
Latitude: 47-34-52 N
Longitude: 117-17-47 W
ERP: 18.50 kW
Channel: 276 Frequency: 103.1 MHz
Antenna HAAT Height: 531.0 m
Antenna AMSL Height: 1251.0 m
Antenna AGL Height: 140.0 m
Ground Elevation: 1111.0 m
Horiz. Pattern: Directional

Spokane

KCDA

Coeur d'Alene

Scale 1:1,500,000

0 20 40 60 km

FIGURE 3

K277CQ MOD OF CP - CHANNEL STUDY

Blue Sky Broadcasting, Inc.

REFERENCE CH# 277D - 103.3 MHz, Pwr= 0.014 kW DA, HAAT= 725.8 M, COR= 1786 M
 48 22 40.0 N. Average Protected F(50-50)= 16.85 km
 116 37 05.0 W. Standard Directional

CH CITY	CALL	TYPE STATE	ANT STATE	AZI <--	DIST FILE #	LAT LNG	PWR (kW) HAAT (M)	INT (km) COR (M)	PRO (km) LICENSEE	*IN* (Overlap in km)	*OUT*
277D Sandpoint	K277CQ	CP	DC_	0.0	0.00	48 22 40.0	0.010	33.1	8.5	-43.7*	-47.9*
		ID		0.0	BNPFT20130830ANR	116 37 05.0	726	1786	Blue Sky Broadcasting, Inc		
276C1 Post Falls	KCDA	LIC	ZCX	209.9	102.03	47 34 52.0	18.500	110.9	75.1	-25.7*	0.3
		ID		29.4	BLH20030908ACL	117 17 47.0	531	1251	Capstar Tx Llc		
278C2 Wallace	R15085	ADD	___	146.9	107.82	47 33 49.0	50.000	107.3	70.6	-16.1	6.3
		ID		327.5		115 50 01.0	150	1454	Spanish Peaks Broadcasting		
involuntary channel substitution per BNPFT-20070411ABF - from Channel 248											
275D Sandpoint	K275CF	CP	DC_	153.7	18.43	48 13 45.0	0.010	0.2	9.1	0.7	8.1
		ID		333.8	BNPFT20130830ALR	116 30 28.0	362	1105	Benefield Broadcasting, In		
280C1 Spokane	KBBD	LIC	NCX	210.6	100.16	47 36 04.0	39.000	9.4	76.1	74.0	23.8
		WA		30.1	BLH20020802AAS	117 17 53.0	432	1129	Mapleton License Of Spokan		
277A Kimberley	AL8390	AL	___	17.4	152.39	49 41 00.0	6.000	108.9	38.0	27.1	42.7
		BC		197.9		115 58 60.0	100	1446			
276C1 Columbia Falls	KRVO	LIC	ZCX	84.0	166.96	48 30 43.0	8.000	112.5	76.9	36.5	59.6
		MT		265.7	BLH20060914AAY	114 22 13.0	720	2009	Rose Communications, Inc.		
275C Cranbrook	R57532	USE	___	30.6	140.41	49 27 34.0	100.000	9.0	97.0	113.6	38.9
		BC		211.4		115 37 44.0	600	1766			
7/26/01: limited to 7.35kW & 753m along 138.2 deg towards 276B1 in Columbia Falls, MT and limited to 14k W & 753m along 156.9 deg towards 275B in Pablo, MT and limited to 28.5kW & 753m along 118.8 deg towards 276 B in Browning, MT											
278D Coeur D'alene	K278BX	CP	C_	197.3	83.30	47 39 44.0	0.010	23.4	14.7	42.3	41.1
		ID		17.1	BMPFT20140626AAL	116 56 57.0		1373	Your Christian Companion N		
277A Grand Forks	AL8356	AL	___	299.1	148.22	49 00 39.0	6.000	102.6	38.0	42.0	76.4
		BC		117.8		118 23 25.0	100	1099			
279A Yahk	AL9720	AL	___	25.5	86.96	49 04 56.0	6.000	2.5	38.0	67.4	44.7
		BC		205.9		116 06 15.0	100	1442			
278B Nelson	R12675	VAC	___	339.0	137.57	49 31 50.0	50.000	68.5	65.0	60.0	54.6
		BC		158.5		117 18 02.0	150	1509			
9/23/2008: Proposed by letter dated 8/29/2008. 9/25/2008: Accepted on channel 278B by IB in 9/24/2008 letter. Note: not specially negotiated.											
274A Chewelah	KCHW	LIC	CX	262.5	81.93	48 16 36.0	0.740	1.6	9.4	71.6	72.4
		WA		81.7	BLH20140407ACJ	117 42 45.0	-290	522	Community Celebrations Inc		

Terrain database is NGDC 30 SEC , R= 73.215 qualifying spacings or FCC minimum Spacings in KM, M= Margin in KM
 In & Out distances between contours are shown at closest points. Reference zone= West Zone, Co to 3rd adjacent.
 Call signs with strikeout need not be protected.
 Ant Column: (D= DA Standard, Z= DA 73.215, N= Not DA 73.215, _= Omni), Polarization (C,H,V,E), Beamtilt(Y,N,X)
 "*"affixed to 'IN' or 'OUT' values = site inside restricted contour.