

KABC - LOS ANGELES, CA

Freq: 790 kHz - Class: B
Latitude: 34-01-41 N / Longitude: 118-22-22 W
Power: 5 kW - RMS: 341.18 mV/m @1km
Present - Dashed Lines

KABC - LOS ANGELES, CA

Freq: 790 kHz - Class: B
Latitude: 34-01-10 N / Longitude: 118-20-44 W
Power: 6.6 kW - RMS: 287.101 mV/m @1km
Proposed - Solid Lines

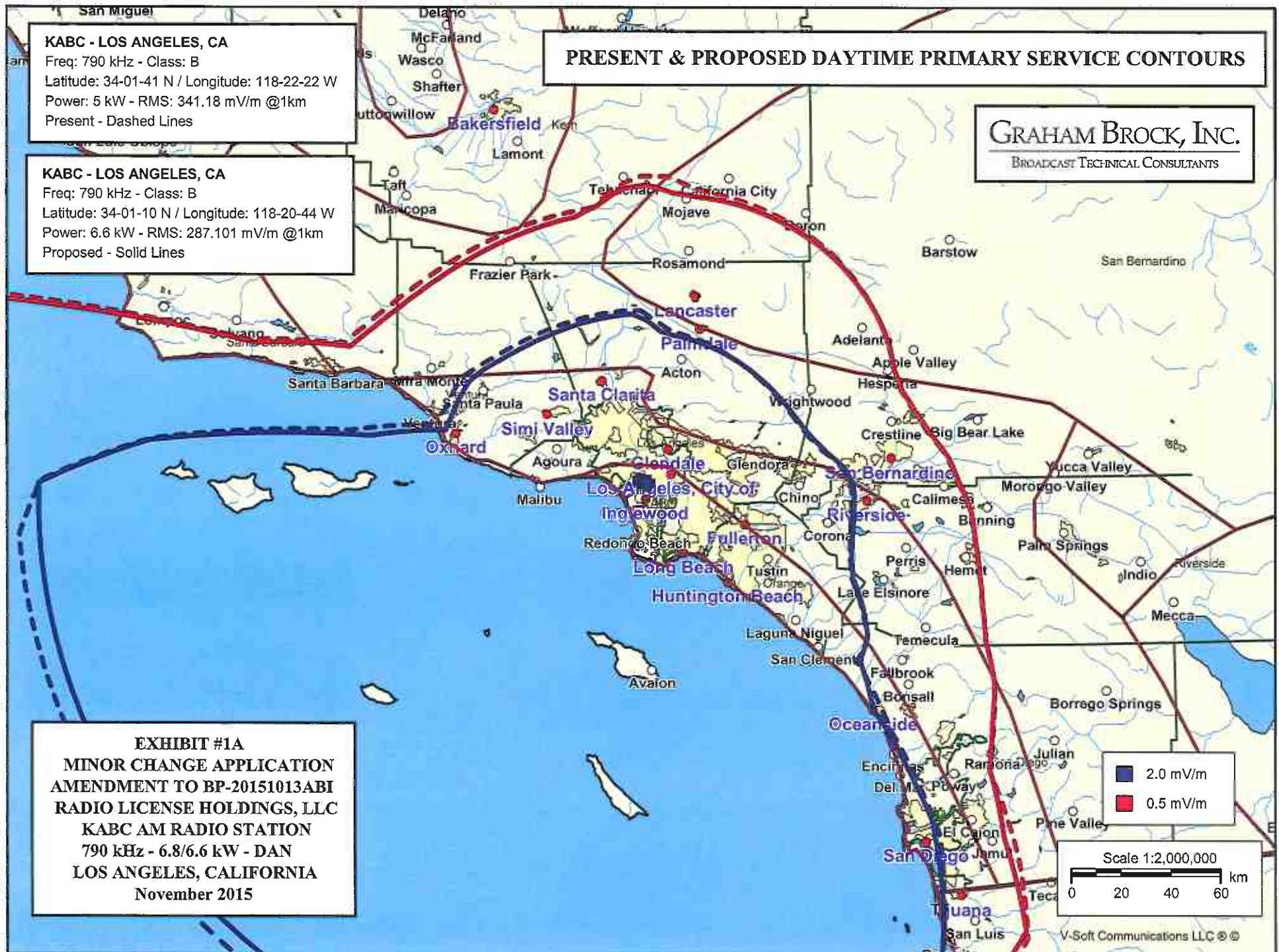
PRESENT & PROPOSED DAYTIME PRIMARY SERVICE CONTOURS

GRAHAM BROCK, INC.

BROADCAST TECHNICAL CONSULTANTS

EXHIBIT #1A

**MINOR CHANGE APPLICATION
AMENDMENT TO BP-20151013ABI
RADIO LICENSE HOLDINGS, LLC
KABC AM RADIO STATION
790 kHz - 6.8/6.6 kW - DAN
LOS ANGELES, CALIFORNIA
November 2015**



KABC - LOS ANGELES, CA

Freq: 790 kHz - Class: B

Latitude: 34-01-41 N / Longitude: 118-22-22 W

Power: 5 kW - RMS: 341.18 mV/m @1km

Present - Dashed Lines

KABC - LOS ANGELES, CA

Freq: 790 kHz - Class: B

Latitude: 34-01-10 N / Longitude: 118-20-44 W

Power: 6.6 kW - RMS: 287.101 mV/m @1km

Proposed - Solid Lines

PRESENT & PROPOSED DAYTIME CITY GRADE SERVICE CONTOURS

GRAHAM BROCK, INC.

BROADCAST TECHNICAL CONSULTANTS

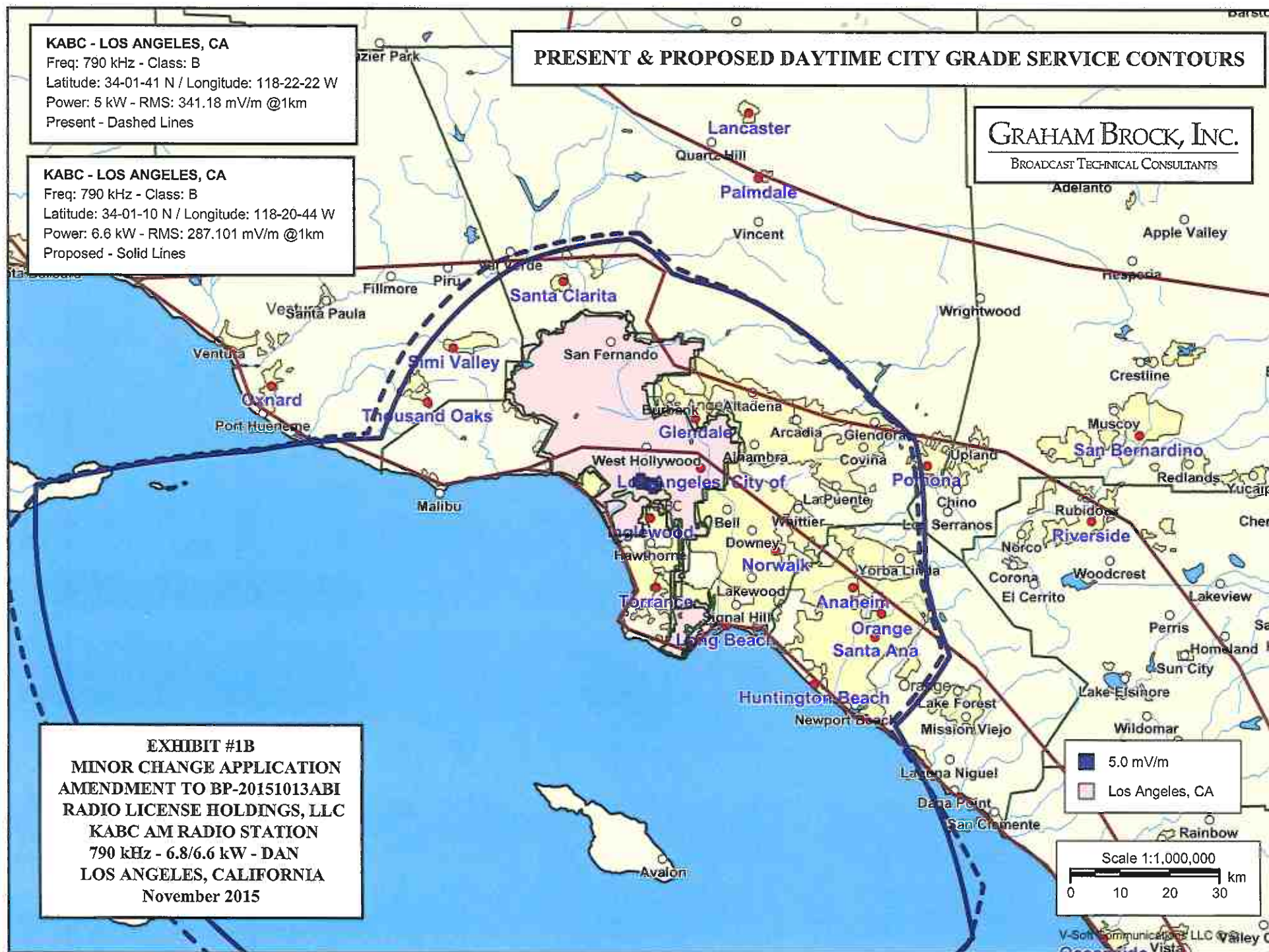


EXHIBIT #1B

**MINOR CHANGE APPLICATION
AMENDMENT TO BP-20151013ABI
RADIO LICENSE HOLDINGS, LLC**

KABC AM RADIO STATION

790 kHz - 6.8/6.6 kW - DAN

LOS ANGELES, CALIFORNIA

November 2015

KABC - LOS ANGELES, CA

Freq: 790 kHz - Class: B

Latitude: 34-01-41 N / Longitude: 118-22-22 W

Power: 5 kW - RMS: 341.18 mV/m @1km

Present - Dashed Lines

KABC - LOS ANGELES, CA

Freq: 790 kHz - Class: B

Latitude: 34-01-10 N / Longitude: 118-20-44 W

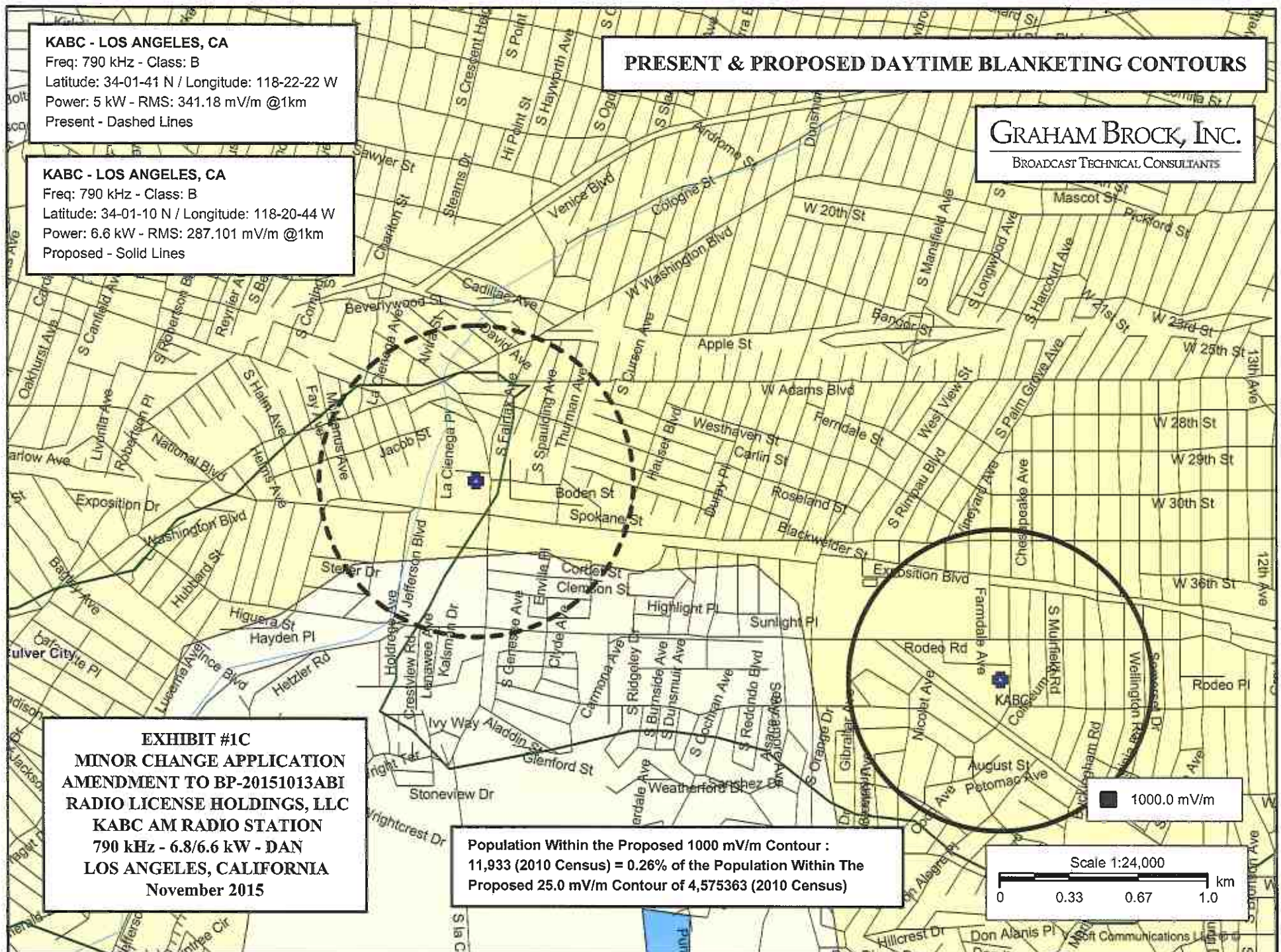
Power: 6.6 kW - RMS: 287.101 mV/m @1km

Proposed - Solid Lines

PRESENT & PROPOSED DAYTIME BLANKETING CONTOURS

GRAHAM BROCK, INC.

BROADCAST TECHNICAL CONSULTANTS



KABC - LOS ANGELES, CA - Present

Freq: 790 kHz - Class: B

Latitude: 34-01-41 N / Longitude: 118-22-22 W

Power: 5 kW - RMS: 740.3 mV/m @1km

KABC - LOS ANGELES, CA - Proposed

Freq: 790 kHz - Class: B

Latitude: 34-01-10 N / Longitude: 118-20-44 W

Power: 6.8 kW - RMS: 829.534 mV/m @1km

PRESENT & PROPOSED NIGHTTIME CITY GRADE CONTOURS

GRAHAM BROCK, INC.

BROADCAST TECHNICAL CONSULTANTS

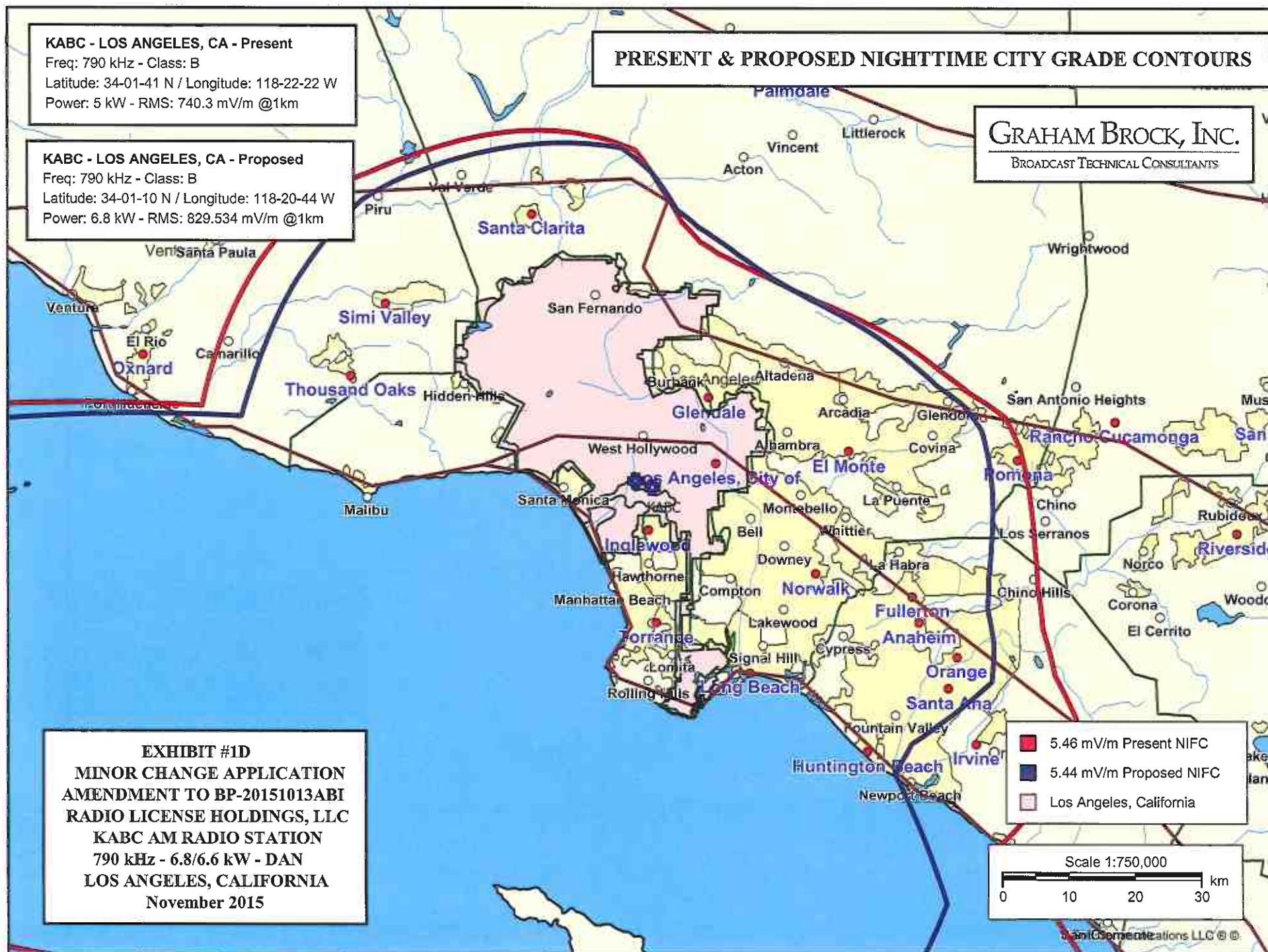


EXHIBIT #1D

**MINOR CHANGE APPLICATION
AMENDMENT TO BP-20151013ABI
RADIO LICENSE HOLDINGS, LLC
KABC AM RADIO STATION
790 kHz - 6.8/6.6 kW - DAN
LOS ANGELES, CALIFORNIA
November 2015**

KABC - LOS ANGELES, CA

Freq: 790 kHz - Class: B

Latitude: 34-01-41 N / Longitude: 118-22-22 W

Power: 5 kW - RMS: 740.3 mV/m @1km

Present - Dashed Lines

PRESENT & PROPOSED NIGHTTIME BLANKETING CONTOURS

GRAHAM BROCK, INC.

BROADCAST TECHNICAL CONSULTANTS

KABC - LOS ANGELES, CA

Freq: 790 kHz - Class: B

Latitude: 34-01-10 N / Longitude: 118-20-44 W

Power: 6.8 kW - RMS: 829.534 mV/m @1km

Proposed - Solid Lines

EXHIBIT #1E

**MINOR CHANGE APPLICATION
AMENDMENT TO BP-20151013ABI
RADIO LICENSE HOLDINGS, LLC
KABC AM RADIO STATION
790 kHz - 6.8/6.6 kW - DAN
LOS ANGELES, CALIFORNIA
November 2015**

Population Within the Proposed 1000 mV/m Contour :
16,336 (2010 Census) = 0.36% of the Population Within The
Proposed 25.0 mV/m Contour of 4,545,762 (2010 Census)

1000.0 mV/m

Scale 1:24,000

0 0.33 0.67 1.0 km

MINOR CHANGE APPLICATION
AMENDMENT TO BP-20151013ABI
RADIO LICENSE HOLDINGS, LLC
KABC AM RADIO STATION
790 kHz - 6.8/6.6 kW - DAN
LOS ANGELES, CALIFORNIA
November 2015

EXHIBIT #1F

Proposed Daytime Service Contours

North Latitude: 34° 01' 10"

West Longitude: 118° 20' 44"

Azimuth	Radiation (mV/m at one km)	Distances to Contours in Kilometers :				
		Contour levels in mV/m.				
		1000.000	25.000	5.000	2.000	.500
0.0	737.58	0.73	19.64	47.40	65.78	120.53
5.0	737.58	0.73	19.64	43.27	61.65	117.73
10.0	737.58	0.73	19.64	42.38	60.76	117.42
15.0	737.58	0.73	19.66	42.30	60.68	118.04
20.0	737.58	0.73	19.68	42.30	60.68	118.39
25.0	737.58	0.73	19.71	42.37	60.75	118.45
30.0	737.58	0.73	19.75	42.50	60.88	118.38
35.0	737.58	0.73	19.81	42.72	61.10	118.15
40.0	737.58	0.73	19.88	43.03	61.41	117.56
45.0	737.58	0.73	19.98	43.44	61.82	116.51
50.0	737.58	0.73	20.12	43.99	62.37	115.25
55.0	737.58	0.73	20.23	44.65	63.03	113.65
60.0	737.58	0.73	20.29	45.46	63.83	111.68
65.0	737.58	0.73	20.37	46.51	64.88	108.80
70.0	737.58	0.73	20.47	47.92	66.30	108.58
75.0	737.58	0.73	20.62	50.50	68.88	111.16
80.0	737.58	0.73	20.80	53.23	72.79	115.07
85.0	737.58	0.73	21.06	53.48	78.51	120.79
90.0	737.58	0.73	21.40	53.83	82.33	124.75
95.0	737.58	0.73	21.89	54.32	82.82	129.76
100.0	737.58	0.73	22.53	55.04	83.54	133.02
105.0	737.58	0.73	22.53	56.19	84.69	137.31
110.0	737.58	0.73	22.53	58.17	86.67	142.29
115.0	737.58	0.73	22.53	62.04	90.54	148.93
120.0	737.58	0.73	22.53	68.35	99.22	159.94
125.0	737.58	0.73	22.53	68.35	107.39	168.11
130.0	737.58	0.73	22.53	68.35	110.77	178.14
135.0	737.58	0.73	22.53	68.35	127.11	201.19
140.0	737.58	0.73	22.53	91.36	176.43	235.16
145.0	737.58	0.73	22.53	111.17	205.64	242.61
150.0	737.58	0.73	22.53	113.25	232.82	447.30
155.0	737.58	0.73	22.53	114.77	234.34	480.63
160.0	737.58	0.73	22.53	114.17	233.74	480.03
165.0	737.58	0.73	22.53	112.95	232.52	478.81
170.0	737.58	0.73	22.53	112.55	232.12	478.41
175.0	737.58	0.73	22.53	113.81	233.38	479.67

Ground Conductivity : FCC M-3

MINOR CHANGE APPLICATION
AMENDMENT TO BP-20151013ABI
RADIO LICENSE HOLDINGS, LLC
KABC AM RADIO STATION
790 kHz - 6.8/6.6 kW - DAN
LOS ANGELES, CALIFORNIA
November 2015

EXHIBIT #1F (continued)

Proposed Daytime Service Contours

North Latitude: 34° 01' 10"

West Longitude: 118° 20' 44"

Azimuth	Radiation (mV/m at one km)	Distances to Contours in Kilometers :				
		Contour levels in mV/m.				
		1000.000	25.000	5.000	2.000	.500
180.0	737.58	0.73	22.53	114.73	234.30	480.59
185.0	737.58	0.73	22.53	115.39	234.96	481.25
190.0	737.58	0.73	23.25	117.11	236.68	482.97
195.0	737.58	0.73	24.91	122.66	242.23	488.52
200.0	737.58	0.73	25.71	123.45	243.02	489.31
205.0	737.58	0.73	26.25	124.00	243.57	489.86
210.0	737.58	0.73	26.64	124.39	243.96	490.25
215.0	737.58	0.73	26.92	124.67	244.24	490.53
220.0	737.58	0.73	27.13	124.87	244.44	490.73
225.0	737.58	0.73	27.28	125.02	244.60	490.89
230.0	737.58	0.73	27.39	125.14	244.71	491.00
235.0	737.58	0.73	27.47	125.21	244.79	491.08
240.0	737.58	0.73	27.52	125.27	244.84	491.13
245.0	737.58	0.73	27.55	125.29	244.87	491.15
250.0	737.58	0.73	27.41	125.15	244.72	491.01
255.0	737.58	0.73	27.19	124.94	244.51	490.80
260.0	737.58	0.73	26.90	124.64	244.21	490.50
265.0	737.58	0.73	26.48	124.22	243.79	490.08
270.0	737.58	0.73	25.87	123.61	243.18	489.47
275.0	737.58	0.73	24.93	79.92	199.49	445.78
280.0	737.58	0.73	22.53	55.27	111.18	357.47
285.0	737.58	0.73	22.17	54.60	83.10	298.23
290.0	737.58	0.73	21.70	54.13	82.63	165.63
295.0	737.58	0.73	21.36	53.78	82.28	130.55
300.0	737.58	0.73	21.03	53.46	81.96	125.74
305.0	737.58	0.73	20.61	53.04	79.75	122.03
310.0	737.58	0.73	20.33	52.76	76.93	119.21
315.0	737.58	0.73	20.14	52.56	74.77	117.05
320.0	737.58	0.73	20.00	52.42	73.09	115.37
325.0	737.58	0.73	19.89	52.32	71.78	114.06
330.0	737.58	0.73	19.82	52.24	70.76	113.04
335.0	737.58	0.73	19.76	51.59	69.97	112.25
340.0	737.58	0.73	19.71	51.00	69.38	111.66
345.0	737.58	0.73	19.68	50.58	68.96	111.24
350.0	737.58	0.73	19.66	50.31	68.69	113.90
355.0	737.58	0.73	19.64	50.18	68.56	119.22

Ground Conductivity : FCC M-3

MINOR CHANGE APPLICATION
AMENDMENT TO BP-20151013ABI
RADIO LICENSE HOLDINGS, LLC
KABC AM RADIO STATION
790 kHz - 6.8/6.6 kW - DAN
LOS ANGELES, CALIFORNIA
November 2015

EXHIBIT #1G

Present Daytime Service Contours

North Latitude: 34° 01' 41"
West Longitude: 118° 22' 22"

Azimuth	Radiation (mV/m at one km)	Distances to Contours in Kilometers :			
		Contour levels in mV/m.			
		1000.000	5.000	2.000	.500
0.0	762.90	0.75	50.15	68.73	123.09
5.0	762.90	0.75	46.43	65.02	123.28
10.0	762.90	0.75	43.67	62.26	120.18
15.0	762.90	0.75	42.89	61.48	119.74
20.0	762.90	0.75	42.78	61.37	120.02
25.0	762.90	0.75	42.84	61.43	120.09
30.0	762.90	0.75	42.98	61.57	120.00
35.0	762.90	0.75	43.19	61.77	119.77
40.0	762.90	0.75	43.48	62.07	119.36
45.0	762.90	0.75	43.88	62.47	118.31
50.0	762.90	0.75	44.41	63.00	117.02
55.0	762.90	0.75	45.10	63.69	115.47
60.0	762.90	0.75	46.01	64.60	113.65
65.0	762.90	0.75	47.14	65.73	111.06
70.0	762.90	0.75	48.53	67.12	109.94
75.0	762.90	0.75	50.82	69.41	112.23
80.0	762.90	0.75	54.35	73.24	116.06
85.0	762.90	0.75	54.63	79.47	122.29
90.0	762.90	0.75	55.02	83.74	126.56
95.0	762.90	0.75	55.57	84.36	131.94
100.0	762.90	0.75	56.37	85.17	135.29
105.0	762.90	0.75	57.64	86.44	139.72
110.0	762.90	0.75	59.81	88.61	144.92
115.0	762.90	0.75	64.05	92.85	151.87
120.0	762.90	0.75	69.71	101.72	163.03
125.0	762.90	0.75	69.71	110.31	171.62
130.0	762.90	0.75	69.71	112.56	181.63
135.0	762.90	0.75	69.71	140.32	212.70
140.0	762.90	0.75	106.44	185.40	240.12
145.0	762.90	0.75	113.91	210.78	248.27
150.0	762.90	0.75	116.09	237.42	453.24
155.0	762.90	0.75	116.46	237.78	485.18
160.0	762.90	0.75	115.42	236.74	484.14
165.0	762.90	0.75	114.36	235.68	483.08
170.0	762.90	0.75	116.06	237.38	484.78
175.0	762.90	0.75	117.32	238.64	486.04

Ground Conductivity : FCC M-3

MINOR CHANGE APPLICATION
AMENDMENT TO BP-20151013ABI
RADIO LICENSE HOLDINGS, LLC
KABC AM RADIO STATION
790 kHz - 6.8/6.6 kW - DAN
LOS ANGELES, CALIFORNIA
November 2015

EXHIBIT #1G (continued)

North Latitude: 34° 01' 41"
West Longitude: 118° 22' 22"

Azimuth	Radiation (mV/m at one km)	Distances to Contours in Kilometers :			
		Contour levels in mV/m.			
		1000.000	5.000	2.000	.500
180.0	762.90	0.75	118.23	239.56	486.96
185.0	762.90	0.75	121.89	243.21	490.61
190.0	762.90	0.75	126.77	248.10	495.50
195.0	762.90	0.75	127.57	248.90	496.30
200.0	762.90	0.75	128.10	249.42	496.82
205.0	762.90	0.75	128.45	249.78	497.18
210.0	762.90	0.75	128.71	250.03	497.43
215.0	762.90	0.75	128.89	250.21	497.62
220.0	762.90	0.75	129.03	250.35	497.75
225.0	762.90	0.75	129.13	250.45	497.85
230.0	762.90	0.75	129.20	250.53	497.93
235.0	762.90	0.75	129.22	250.54	497.94
240.0	762.90	0.75	129.14	250.47	497.87
245.0	762.90	0.75	129.04	250.36	497.77
250.0	762.90	0.75	128.91	250.23	497.63
255.0	762.90	0.75	128.72	250.05	497.45
260.0	762.90	0.75	128.47	249.79	497.19
265.0	762.90	0.75	128.11	249.43	496.84
270.0	762.90	0.75	118.61	239.93	487.33
275.0	762.90	0.75	74.90	196.22	443.62
280.0	762.90	0.75	55.38	117.67	365.08
285.0	762.90	0.75	54.85	87.18	305.81
290.0	762.90	0.75	54.48	83.27	166.57
295.0	762.90	0.75	54.20	83.00	130.79
300.0	762.90	0.75	54.00	82.80	126.14
305.0	762.90	0.75	53.68	79.73	122.55
310.0	762.90	0.75	53.45	77.01	119.83
315.0	762.90	0.75	53.29	74.92	117.74
320.0	762.90	0.75	53.17	73.29	116.11
325.0	762.90	0.75	53.09	72.02	114.84
330.0	762.90	0.75	52.44	71.03	113.85
335.0	762.90	0.75	51.67	70.26	113.08
340.0	762.90	0.75	51.10	69.69	112.51
345.0	762.90	0.75	50.70	69.28	112.11
350.0	762.90	0.75	50.43	69.02	112.01
355.0	762.90	0.75	50.30	68.89	118.72

Ground Conductivity: FCC M-3

MINOR CHANGE APPLICATION
AMENDMENT TO BP-20151013ABI
RADIO LICENSE HOLDINGS, LLC
KABC AM RADIO STATION
790 kHz - 6.8/6.6 kW - DAN
LOS ANGELES, CALIFORNIA
November 2015

EXHIBIT #1H

Proposed Nighttime Service Contours

North Latitude: 34° 01' 10"
West Longitude: 118° 20' 44"

Azimuth	Radiation (mV/m at one km)	Dist to Contour - km: Contour levels in mV/m.			Azimuth	Radiation (mV/m at one km)	Dist to Contour - km: Contour levels in mV/m.		
		1000.000	25.000	* 5.441			1000.000	25.000	* 5.441
0.0	817.58	0.81	21.09	47.72	180.0	876.03	0.86	25.80	124.02
5.0	757.64	0.75	20.01	42.30	185.0	930.37	0.92	27.02	131.36
10.0	699.36	0.69	18.92	40.07	190.0	978.60	0.96	28.81	138.84
15.0	646.35	0.64	17.90	38.73	195.0	1019.34	1.00	35.59	149.17
20.0	602.28	0.60	17.04	37.61	200.0	1051.84	1.03	37.60	153.72
25.0	570.32	0.56	16.41	36.84	205.0	1075.87	1.06	39.04	156.98
30.0	552.39	0.55	16.08	36.49	210.0	1091.72	1.07	40.01	159.15
35.0	548.52	0.54	16.05	36.60	215.0	1100.08	1.08	40.60	160.37
40.0	556.80	0.55	16.30	37.13	220.0	1101.95	1.08	40.88	160.78
45.0	574.03	0.57	16.76	38.01	225.0	1098.56	1.08	40.91	160.56
50.0	596.70	0.59	17.37	39.15	230.0	1091.24	1.07	40.75	159.85
55.0	621.60	0.61	17.98	40.46	235.0	1081.36	1.06	40.46	158.81
60.0	646.20	0.64	18.53	41.87	240.0	1070.21	1.05	40.09	157.61
65.0	668.65	0.66	19.05	43.47	245.0	1059.00	1.04	39.70	156.37
70.0	687.69	0.68	19.53	45.34	250.0	1048.76	1.03	39.18	155.07
75.0	702.51	0.69	19.95	48.27	255.0	1040.34	1.02	38.65	153.90
80.0	712.61	0.70	20.33	50.09	260.0	1034.36	1.02	38.13	152.91
85.0	717.73	0.71	20.68	50.53	265.0	1031.27	1.01	37.60	152.13
90.0	717.73	0.71	21.03	50.88	270.0	1031.27	1.01	36.99	151.52
95.0	712.61	0.70	21.42	51.18	275.0	1034.36	1.02	32.51	108.19
100.0	702.51	0.69	21.67	51.54	280.0	1040.34	1.02	28.02	62.54
105.0	687.69	0.68	21.30	52.14	285.0	1048.76	1.03	27.48	62.10
110.0	668.65	0.66	20.82	53.40	290.0	1059.00	1.04	27.16	61.92
115.0	646.20	0.64	20.25	56.42	295.0	1070.21	1.05	27.00	61.89
120.0	621.60	0.61	19.62	58.66	300.0	1081.36	1.06	26.84	61.87
125.0	596.70	0.59	18.98	57.21	305.0	1091.24	1.07	26.57	61.72
130.0	574.03	0.57	18.38	55.85	310.0	1098.56	1.08	26.41	61.64
135.0	556.80	0.55	17.92	54.79	315.0	1101.95	1.08	26.26	61.54
140.0	548.52	0.54	17.70	56.36	320.0	1100.08	1.08	26.09	60.41
145.0	552.39	0.55	17.80	76.75	325.0	1091.72	1.07	25.86	58.96
150.0	570.32	0.56	18.28	81.44	330.0	1075.87	1.06	25.54	57.66
155.0	602.28	0.60	19.12	87.57	335.0	1051.84	1.03	25.11	56.45
160.0	646.35	0.64	20.26	93.18	340.0	1019.34	1.00	24.55	55.27
165.0	699.36	0.69	21.59	99.26	345.0	978.60	0.96	23.87	54.10
170.0	757.64	0.75	23.02	106.67	350.0	930.37	0.92	23.05	52.91
175.0	817.58	0.81	24.44	115.73	355.0	876.03	0.86	22.12	51.70

GROUND CONDUCTIVITY: FCC M-3

* - Nighttime Interference Free Contour

MINOR CHANGE APPLICATION
AMENDMENT TO BP-20151013ABI
RADIO LICENSE HOLDINGS, LLC
KABC AM RADIO STATION
790 kHz - 6.8/6.6 kW - DAN
LOS ANGELES, CALIFORNIA
November 2015

EXHIBIT #11

Present Nighttime Service Contours

North Latitude: 34° 01' 41"
West Longitude: 118° 22' 22"

Azimuth	Radiation (mV/m at one km)	Dist to Contour - km:		Azimuth	Radiation (mV/m at one km)	Dist to Contour - km:	
		1000.000	* 5.457			1000.000	* 5.457
0.0	836.22	0.82	50.22	180.0	772.24	0.76	110.45
5.0	746.82	0.74	44.58	185.0	719.61	0.71	107.14
10.0	663.96	0.66	39.89	190.0	668.14	0.66	105.02
15.0	601.15	0.59	37.55	195.0	622.74	0.62	99.48
20.0	571.80	0.57	36.66	200.0	588.13	0.58	95.08
25.0	560.68	0.55	36.43	205.0	567.06	0.56	92.40
30.0	558.06	0.55	36.49	210.0	561.98	0.56	91.92
35.0	564.15	0.56	36.86	215.0	573.04	0.57	93.71
40.0	578.44	0.57	37.54	220.0	598.67	0.59	97.53
45.0	603.76	0.60	38.60	225.0	642.13	0.63	103.76
50.0	643.88	0.64	40.14	230.0	700.62	0.69	111.88
55.0	693.27	0.68	42.02	235.0	767.45	0.76	120.81
60.0	745.89	0.74	44.14	240.0	836.69	0.82	129.66
65.0	796.73	0.79	46.38	245.0	904.38	0.89	137.97
70.0	842.19	0.83	48.73	250.0	967.78	0.95	145.50
75.0	880.26	0.87	51.80	255.0	1025.14	1.01	152.04
80.0	910.37	0.90	56.22	260.0	1075.47	1.06	157.52
85.0	933.14	0.92	57.79	265.0	1118.33	1.10	161.96
90.0	950.15	0.93	58.69	270.0	1153.76	1.13	156.35
95.0	963.44	0.95	59.63	275.0	1182.10	1.16	115.69
100.0	975.06	0.96	60.77	280.0	1203.90	1.18	66.01
105.0	986.58	0.97	62.38	285.0	1219.78	1.20	65.87
110.0	997.67	0.98	64.86	290.0	1230.38	1.21	65.77
115.0	1004.22	0.99	69.29	295.0	1236.18	1.21	65.64
120.0	1005.84	0.99	77.55	300.0	1237.43	1.21	65.47
125.0	1005.85	0.99	77.55	305.0	1231.74	1.21	65.01
130.0	1005.54	0.99	77.53	310.0	1218.23	1.19	64.43
135.0	1004.12	0.99	77.47	315.0	1204.38	1.18	63.14
140.0	1000.47	0.98	126.88	320.0	1192.96	1.17	61.32
145.0	993.32	0.98	133.51	325.0	1181.46	1.16	59.86
150.0	981.37	0.97	134.28	330.0	1166.21	1.14	58.62
155.0	963.46	0.95	132.54	335.0	1143.21	1.12	57.47
160.0	938.75	0.92	128.55	340.0	1108.92	1.09	56.31
165.0	906.82	0.89	123.59	345.0	1060.89	1.04	55.07
170.0	867.80	0.85	120.48	350.0	998.26	0.98	53.68
175.0	822.43	0.81	116.02	355.0	922.19	0.91	52.10

GROUND CONDUCTIVITY: FCC M-3

* - Nighttime Interference Free Contour

MINOR CHANGE APPLICATION
AMENDMENT TO BP-20151013ABI
RADIO LICENSE HOLDINGS, LLC
KABC AM RADIO STATION
790 kHz - 6.8/6.6 kW - DAN
LOS ANGELES, CALIFORNIA
November 2015

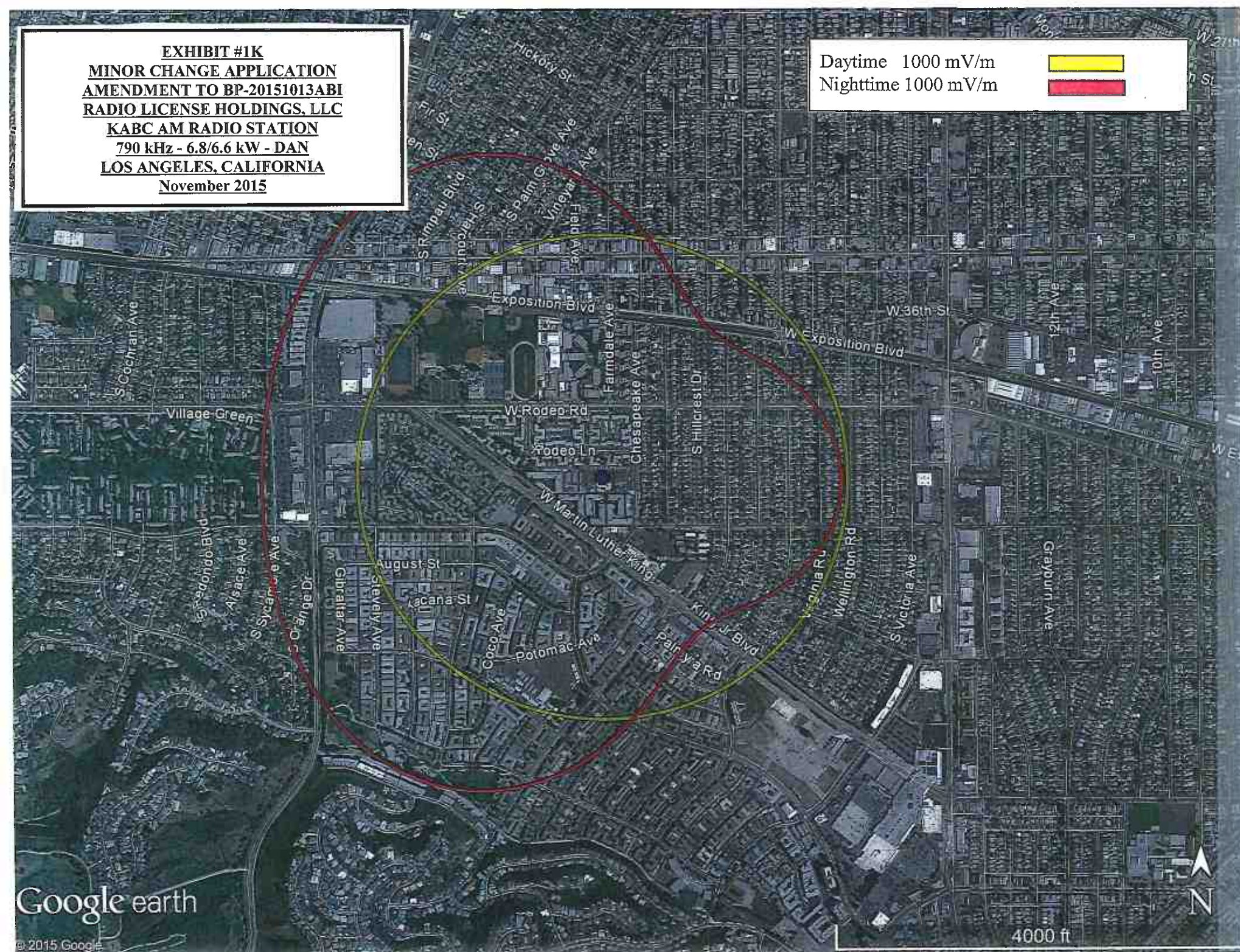
EXHIBIT #1J

ID Stations Study at 34 01 10 N, 118 20 44 W, Search Distance = 16 km

Call	Service	City	State	Chan.	Power	Coordinates	Dist-km	Azimuth	File Number
AM									
NEW-N	N	CULVER CITY	CA	1500	0000.180kW	340110N 1182044W	000.0	000.0	BNP20140715ABO
NEW	D	CULVER CITY	CA	1500	0000.120kW	340110N 1182044W	000.0	000.0	BNP20140715ABO
KWKW-N	N	LOS ANGELES	CA	1330	0005.000kW	340110N 1182044W	000.0	000.0	BML20090903ADR
KWKW	D	LOS ANGELES	CA	1330	0005.000kW	340110N 1182044W	000.0	000.0	BML20090903ADR
KFOX-N	N	TORRANCE	CA	1650	0000.490kW	340110N 1182041W	000.1	090.0	BL20020111ABD
KFOX	D	TORRANCE	CA	1650	0010.000kW	340110N 1182041W	000.1	090.0	BL20020111ABD
KTYM-N	N	INGLEWOOD	CA	1460	0000.500kW	340027N 1182154W	002.2	233.5	BML20120718ACS
KTYM	D	INGLEWOOD	CA	1460	0005.000kW	340027N 1182154W	002.2	233.5	BML20120718ACS
KABC	D	LOS ANGELES	CA	790	0005.000kW	340141N 1182222W	002.7	290.9	BLRC1104TV
KABC-N	N	LOS ANGELES	CA	790	0005.000kW	340141N 1182222W	002.7	290.9	BLRC1104TV
KYPA	D	LOS ANGELES	CA	1230	0001.000kW	340508N 1181524W	011.0	048.1	BMML20111209KKR
KYPA-N	N	LOS ANGELES	CA	1230	0001.000kW	340508N 1181524W	011.0	048.1	BMML20111209KKR
KYPA-N	N	LOS ANGELES	CA	1230	0001.000kW	340508N 1181524W	011.0	048.1	BMML20111209KKR
KHJ-N	N	LOS ANGELES	CA	930	0005.000kW	340508N 1181524W	011.0	048.1	BML20140731ASI
KBLA	D	SANTA MONICA	CA	1580	0050.000kW	340508N 1181524W	011.0	048.1	BMML20130719CZK
KBLA-N	N	SANTA MONICA	CA	1580	0050.000kW	340508N 1181524W	011.0	048.1	BMML20130719CZK
KHJ	D	LOS ANGELES	CA	930	0005.000kW	340508N 1181524W	011.0	048.1	BML20140731ASI
KYPA	D	LOS ANGELES	CA	1230	0001.000kW	340508N 1181524W	011.0	048.1	BMML20111209KKR
NEW	D	CULVER CITY	CA	1500	0025.000kW	340411N 1181136W	015.1	068.2	BNP20040130ATD
KLAC	D	LOS ANGELES	CA	570	0005.000kW	340411N 1181136W	015.1	068.2	BML20141104AFV
KLAC-N	N	LOS ANGELES	CA	570	0005.000kW	340411N 1181136W	015.1	068.2	BML20141104AFV
NEW-N	N	CULVER CITY	CA	1500	0001.000kW	340411N 1181136W	015.1	068.2	BNP20040130ATD
KFWB	U	LOS ANGELES	CA	980	0005.000kW	340411N 1181135W	015.1	068.3	BL
FM									
KDAY	M	Redondo Beach	CA	228A	0004.200kW	340019N 1182144W	002.2	224.3	BLH20090618ADE
K216FM	X	Valley Villag	CA	216D	0000.010kW	340019N 1182144W	002.2	224.3	BPFT20130724ADB
KRCB	M	Inglewood	CA	280A	0004.100kW	340026N 1182154W	002.3	232.8	BMML20021025ABJ
KJLH	M	Compton	CA	272A	0005.600kW	335952N 1182132W	002.7	207.0	BLH20001201AAY
KDLB	M	Santa Monica	CA	276A	0003.700kW	340053N 1182250W	003.3	260.8	BLH20041227ABE
K252FK	X	Culver City	CA	252D	0000.013kW	340046N 1182253W	003.4	257.4	BNPFT20130829AGO
KCAQFM	B	Las Flores Ca	CA	284D	0002.300kW	340114N 1182523W	007.2	271.0	BLFTB20150626AAB
KCSNFM	B	West Los Ange	CA	203D	0000.800kW	340342N 1182457W	008.0	306.0	BLFTB20130115ADF
KXLU	M	Los Angeles	CA	205A	0002.900kW	335816N 1182456W	008.4	230.2	BLEDB62
159351 L	L	Los Angeles	CA	268L1	0000.014kW	340318N 1181541W	008.7	063.0	BNPL20131114BQB
165416 L	L	Los Angeles	CA	268L1	0000.030kW	340248N 1181502W	009.3	070.9	BNPL20131114BGG
165826 L	L	Los Angeles	CA	268L1	0000.002kW	340627N 1182324W	010.6	337.3	BNPL20131114BDZ
NEW.C L	L	Venice	CA	256L1	0000.100kW	335958N 1182755W	011.3	258.6	BNPL20131113BUG
KYSR	M	Los Angeles	CA	254B	0075.000kW	340708N 1182330W	011.8	339.0	BMML20090709ACO
KCRW	M	Santa Monica	CA	210B	0006.900kW	340708N 1182330W	011.8	339.0	BLEDB19810325AF
K220HC	X	Studio City	CA	220D	0000.010kW	340734N 1182203W	012.0	350.3	BLFTB20140127ADE
KSSSEFM	B	San Fernando	CA	296D	0000.018kW	340734N 1182203W	012.0	350.3	BLFTB20100716ACS
K216EM	X	Arcadia	CA	216D	0000.010kW	340734N 1182203W	012.0	350.3	BPFT20130731API
165828 L	L	Los Angeles	CA	268L1	0000.002kW	340734N 1182203W	012.0	350.3	BNPL20131114BKP
167576 L	L	Los Angeles	CA	248L1	0000.001kW	340734N 1182203W	012.0	350.3	BNPL20131112BHF
165828 L	L	Los Angeles	CA	268L1	0000.002kW	340734N 1182203W	012.0	350.3	BNPL20131114BEK
K216FM	X	Valley Villag	CA	216D	0000.010kW	340734N 1182203W	012.0	350.3	BLFTB20130627ABA
KJLHEM	B	Hollywood	CA	272D	0000.005kW	340734N 1182206W	012.0	350.0	BLFTB20080410AAJ
159445 L	L	Los Angeles	CA	268L1	0000.050kW	340627N 1181458W	013.2	042.1	BNPL20131114BFI
165414 L	L	Los Angeles	CA	268L1	0000.050kW	340241N 1181211W	013.5	077.9	BNPL20131114AWZ
162324 L	L	Venice	CA	260L1	0000.018kW	340100N 1182958W	014.2	268.8	BNPL20131113AAT
165828 L	L	Los Angeles	CA	268L1	0000.009kW	340544N 1182835W	014.7	305.1	BNPL20131114BDA
165827 L	L	Los Angeles	CA	268L1	0000.100kW	340844N 1181630W	015.4	024.8	BNPL20131114BHL
TV									
LM3023	M	Los Angeles	CA	14Z	0000.000kW	340315N 1181828W	005.2	042.0	
LM8102	M	Los Angeles	CA	16ZT	0000.000kW	340315N 1181828W	005.2	042.0	
LM3028	M	Los Angeles	CA	20Z	0000.000kW	340315N 1181828W	005.2	042.0	

EXHIBIT #1K
MINOR CHANGE APPLICATION
AMENDMENT TO BP-20151013ABI
RADIO LICENSE HOLDINGS, LLC
KABC AM RADIO STATION
790 kHz - 6.8/6.6 kW - DAN
LOS ANGELES, CALIFORNIA
November 2015

Daytime 1000 mV/m
Nighttime 1000 mV/m



MINOR CHANGE APPLICATION
AMENDMENT TO BP-20151013ABI
RADIO LICENSE HOLDINGS, LLC
KABC AM RADIO STATION
790 kHz - 6.8/6.6 kW - DAN
LOS ANGELES, CALIFORNIA
November 2015

EXHIBIT #1L1

NADCON

Center of the Array

North American Datum Conversion

NAD 83 to NAD 27

NADCON Program Version 2.11

=====

Transformation #: 1

Region: Conus

	Latitude	Longitude
NAD 27 datum values:	34 01 9.85646	118 20 44.42552
NAD 83 datum values:	34 01 9.90000	118 20 47.70000
NAD 27 - NAD 83 shift values:	-0.04354	-3.27448(secs.)
	-1.342	-84.012 (meters)
Magnitude of total shift:		84.023(meters)

MINOR CHANGE APPLICATION
AMENDMENT TO BP-20151013ABI
RADIO LICENSE HOLDINGS, LLC
KABC AM RADIO STATION
790 kHz - 6.8/6.6 kW - DAN
LOS ANGELES, CALIFORNIA
November 2015

EXHIBIT #1L2a

NADCON

Tower #2

North American Datum Conversion

NAD 83 to NAD 27

NADCON Program Version 2.11

=====

Transformation #: 1 Region: Conus

	Latitude	Longitude
NAD 27 datum values:	34 01 9.75650	118 20 47.42545
NAD 83 datum values:	34 01 9.80000	118 20 50.70000
NAD 27 - NAD 83 shift values:	-0.04350	-3.27455(secs.)
	-1.340	-84.014 (meters)
Magnitude of total shift:		84.025(meters)

EXHIBIT #1L2b
MINOR CHANGE APPLICATION
AMENDMENT TO BP-20151013ABI
RADIO LICENSE HOLDINGS, LLC
KABC AM RADIO STATION
790 kHz - 6.8/6.6 kW - DAN
LOS ANGELES, CALIFORNIA
November 2015

Registration Detail

Reg Number 1015922
File Number A0975551
EMI No
NEPA No

Status Constructed
Constructed 01/01/1977
Dismantled

Antenna Structure

Structure Type 2TA2 - Antenna Tower Array - 1st N = # towers 2nd N =

Location (In NAD83 Coordinates)

Lat/Long 34-01-09.8 N 118-20-50.7 W
City, State LOS ANGELES , CA
Zip 90016
Center of 34-01-09.9 N 118-20-47.7 W
AM Array

Address TWR 2 4557 MARTIN LUTHER
KING BLVD
County LOS ANGELES
Position of
Tower in Array

Heights (meters)

Elevation of Site Above Mean Sea Level
32.0
Overall Height Above Mean Sea Level
144.8

Overall Height Above Ground (AGL)
112.8
Overall Height Above Ground w/o Appurtenances
111.9

Painting and Lighting Specifications

FCC Paragraphs 1, 3, 12, 21

FAA Notification

FAA Study NOS 05-0182-2

FAA Issue Date 03/20/1989

Owner & Contact Information

FRN 0024630683

Owner Entity Corporation
Type

Assignor FRN 0001529171

Assignor ID L00078900

Owner

Lotus Los Angeles Corp.
3301 Barham Blvd., Suite 200
Los Angeles , CA 90068

P: (323)512-2225
F:
E: headquarters@lotuscorp.com

Contact

Levine , Jay
3301 Barham Blvd., Suite 200
Los Angeles , CA 90068

P: (323)512-2225
F:
E: Jay@lotuscorp.com

Last Action Status

Status Constructed
Purpose Change Owner

Received 07/20/2015
Entered 07/20/2015

Mode Interactive

Related Applications

07/20/2015 A0975551 - Change Owner (OC)
12/01/2009 A0658529 - Notification (NT)
12/04/2008 A0615929 - Modification (MD)

Related applications (6)

Comments

Comments

None

History

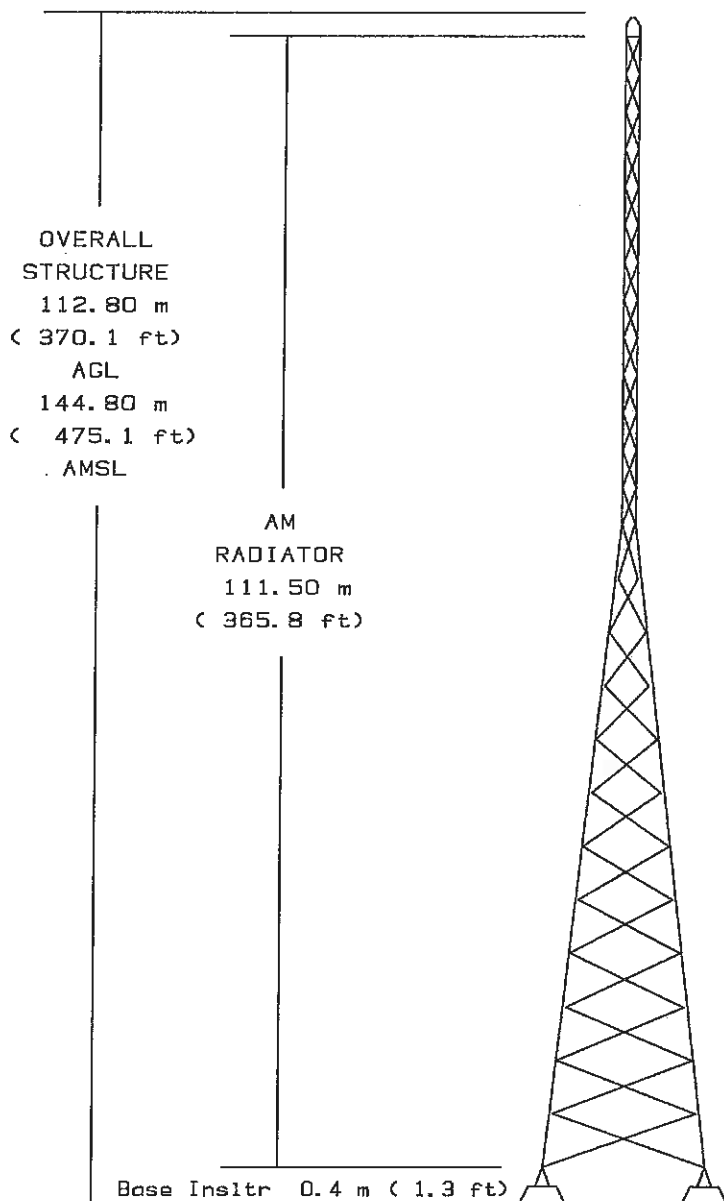
Date	Event
07/21/2015	Registration Printed
07/21/2015	Change of Ownership Letter Sent
07/20/2015	Change of Ownership Received

All History (14)

Automated Letters

07/21/2015 Authorization, Reference
07/21/2015 Ownership Change, Reference 871568
12/09/2008 Authorization, Reference

All letters (5)



TOWER #2 OF 2
CENTER OF ARRAY:
N. LAT. 34-01-10
W. LONG. 118-20-44
NAD '27

North Latitude 34-01-10
West Longitude 118-20-47

Site Elev 32.00 m (105.0 ft) AMSL

(Sketch not drawn to scale)

Tower Registration Number 1015922

TOWER VERTICAL PLAN SKETCH

SITE ELEVATION - 32 m (105 ft) AMSL

TOP OF STRUCTURE - 113 m (370 ft) AGL
145 m (475 ft) AMSL

AM Radiator - 112 m (366 ft)

FIGURES ROUNDED TO NEAREST METER (FOOT).

EXHIBIT #1L2c
MINOR CHANGE APPLICATION
AMENDMENT TO BP-20151013ABI
RADIO LICENSE HOLDINGS, LLC
KABC AM RADIO STATION
790 kHz - 6.8/6.6 kW - DAN
LOS ANGELES, CALIFORNIA
November 2015

GRAHAM BROCK, INC.

BROADCAST TECHNICAL CONSULTANTS

MINOR CHANGE APPLICATION
AMENDMENT TO BP-20151013ABI
RADIO LICENSE HOLDINGS, LLC
KABC AM RADIO STATION
790 kHz - 6.8/6.6 kW - DAN
LOS ANGELES, CALIFORNIA
November 2015

EXHIBIT #1L3a

NADCON

Tower #1

North American Datum Conversion

NAD 83 to NAD 27

NADCON Program Version 2.11

=====

Transformation #: 1 Region: Conus

	Latitude	Longitude
NAD 27 datum values:	34 01 9.95642	118 20 41.52560
NAD 83 datum values:	34 01 10.00000	118 20 44.80000
NAD 27 - NAD 83 shift values:	-0.04358	-3.27440(secs.)
	-1.343	-84.010 (meters)
Magnitude of total shift:		84.021(meters)

EXHIBIT #1L3b
MINOR CHANGE APPLICATION
AMENDMENT TO BP-20151013ABI
RADIO LICENSE HOLDINGS, LLC
KABC AM RADIO STATION
790 kHz - 6.8/6.6 kW - DAN
LOS ANGELES, CALIFORNIA
November 2015

Registration Detail

Reg Number 1015921
File Number A0975550
EMI No
NEPA No

Status Constructed
Constructed 01/01/1979
Dismantled

Antenna Structure

Structure Type 2TA1 - Antenna Tower Array - 1st N = # towers 2nd N =

Location (in NAD83 Coordinates)

Lat/Long 34-01-10.0 N 118-20-44.8 W
City, State LOS ANGELES , CA
Zip 90016
Center of 34-01-09.9 N 118-20-47.7 W
AM Array

Address TWR 1 4557 MARTIN LUTHER
KING BLVD
County LOS ANGELES
Position of
Tower in Array

Heights (meters)

Elevation of Site Above Mean Sea Level
32.0
Overall Height Above Mean Sea Level
144.8

Overall Height Above Ground (AGL)
112.8
Overall Height Above Ground w/o Appurtenances
111.9

Painting and Lighting Specifications

FCC Paragraphs 1, 3, 12, 21

FAA Notification

FAA Study NOS 05-0182-1

FAA Issue Date 03/20/1989

Owner & Contact Information

FRN 0024630683

Owner Entity Corporation
Type

Assignor FRN 0001529171

Assignor ID L00078900

Owner

Lotus Los Angeles Corp.
3301 Barham Blvd., Suite 200
Los Angeles , CA 90068

P: (323)512-2225
F:
E: headquarters@lotuscorp.com

Contact

Levine , Jay
3301 Barham Blvd., Suite 200
Los Angeles , CA 90068

P: (323)512-2225
F:
E: Jay@lotuscorp.com

Last Action Status

Status Constructed
Purpose Change Owner

Received 07/20/2015
Entered 07/20/2015

Mode Interactive

Related Applications

07/20/2015 A0975550 - Change Owner (OC)
12/01/2009 A0658523 - Notification (NT)
12/04/2008 A0615928 - Modification (MD)

Related applications (6)

▢

Comments

Comments

None

▢

History

Date

Event

07/21/2015 Registration Printed
07/21/2015 Change of Ownership Letter Sent
07/20/2015 Change of Ownership Received

All History (14)

▢

Authorized Letters

07/21/2015 Authorization, Reference
07/21/2015 Ownership Change, Reference 871567
12/09/2008 Authorization, Reference

All letters (5)

▢

OVERALL
STRUCTURE
112.80 m
(370.1 ft)
AGL
144.80 m
(475.1 ft)
AMSL

AM
RADIATOR
111.50 m
(365.8 ft)

Base Insltr 0.4 m (1.3 ft)

North Latitude 34-01-10
West Longitude 118-20-42

Site Elev 32.00 m (105.0 ft) AMSL

(Sketch not drawn to scale)
Tower Registration Number 1015921

TOWER #1 OF 2
CENTER OF ARRAY:
N. LAT. 34-01-10
W. LONG. 118-20-44
NAD '27

TOWER VERTICAL PLAN SKETCH

SITE ELEVATION - 32 m (105 ft) AMSL

TOP OF STRUCTURE - 113 m (370 ft) AGL
145 m (475 ft) AMSL

AM Radiator - 112 m (366 ft)

FIGURES ROUNDED TO NEAREST METER (FOOT).

EXHIBIT #1L3c
MINOR CHANGE APPLICATION
AMENDMENT TO BP-20151013ABI
RADIO LICENSE HOLDINGS, LLC
KABC AM RADIO STATION
790 kHz - 6.8/6.6 kW - DAN
LOS ANGELES, CALIFORNIA
November 2015

GRAHAM BROCK, INC.

BROADCAST TECHNICAL CONSULTANTS

EXHIBIT #1M
MINOR CHANGE APPLICATION
AMENDMENT TO BP-20151013ABI
RADIO LICENSE HOLDINGS, LLC
KABC AM RADIO STATION
790 kHz - 6.8/6.6 kW - DAN
LOS ANGELES, CALIFORNIA
November 2015

Program **FIGURE 8** calculates the Inverse Distance Field between **530** and **1700 kHz**. The program is a computer version of the FCC Rules.

The Inverse Distance Fields calculated here are in **mV/m at 1 MILE**.

Frequency:	790.00 kHz
Number of Radials:	120 radials
Correction for number of radials:	0.0000 mV/m @ 1 Mile
Average Length of Ground Radials:	56.998 meters 187.000 feet 0.150 wavelengths 54.071 degrees
Correction factor for length:	-18.0000 mV/m @ 1 Mile
Wavelength:	379.484 meters 1245.027 feet
Tower Height:	111.465 meters 365.700 feet 0.294 wavelengths 105.742 degrees

Predicted Field Strength from Figure 8, Section 73.190:

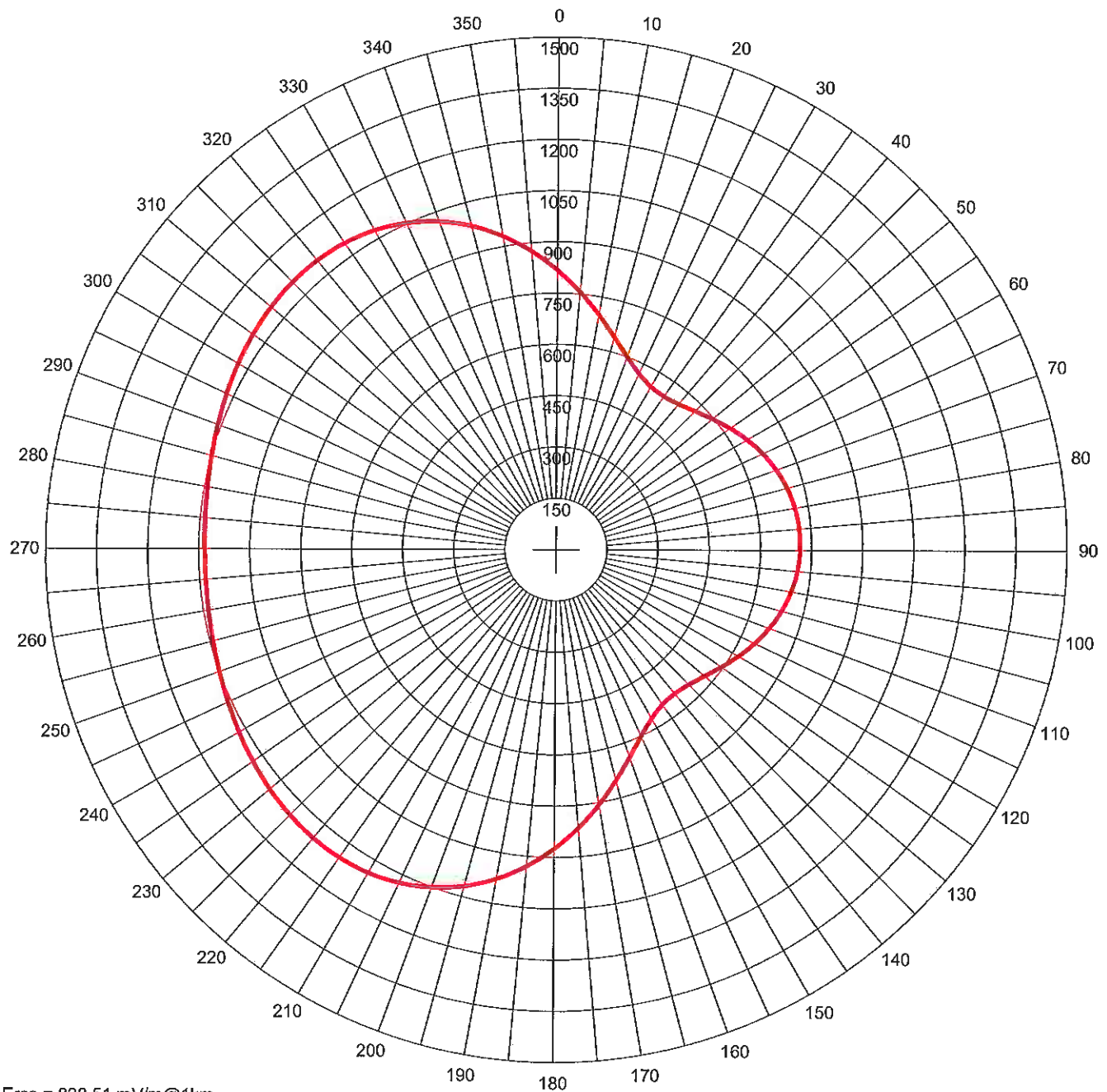
(Metric units)

	Theoretical Field	Corrected Field	
At 1.00 kW :	316.070	287.101	mV/m @ 1 KILOMETER
At 5.00 kW :	706.753	641.978	mV/m @ 1 KILOMETER

(English units)

	Theoretical Field	Corrected Field	
At 1.00 kW :	196.397	178.397	mV/m @ 1 MILE
At 5.00 kW :	439.156	398.907	mV/m @ 1 MILE

KABC Proposed Nighttime AM Directional Pattern



Erss = 828.51 mV/m@1km
 Theo RMS: 829.534 mV/m@1km
 Std RMS: 871.441 mV/m@1km
 Q: 26.077 mV/m@1km

Standard Horizontal Plane Pattern

— Pattern (mV/m @ 1km)
 — Pattern X10

#	Field Ratio	Phase (deg)	Spacing (deg)	Orient (deg)	Height (deg)	Ref Switch	TL Switch	A (deg)	B (deg)	C (deg)	D (deg)
1	0.336	95.0	0.0	0.0	105.8	0	0	0.0	0.0	0.0	0.0
2	1.000	0.0	143.1	267.5	105.8	0	0	0.0	0.0	0.0	0.0

Call: KABC
 Freq: 790 kHz
 LOS ANGELES, CA, US
 Hours: N
 Lat: 34-01-10 N
 Lng: 118-20-44 W
 Power: 6.8 kW
 Theo RMS: 829.53 mV/m@1km
 @ 6.8 kW

EXHIBIT #1N1a

MINOR CHANGE APPLICATION
AMENDMENT TO BP-20151013ABI
RADIO LICENSE HOLDINGS, LLC
KABC AM RADIO STATION
790 kHz - 6.8/6.6 kW - DAN
LOS ANGELES, CALIFORNIA
November 2015

EXHIBIT #1N1b

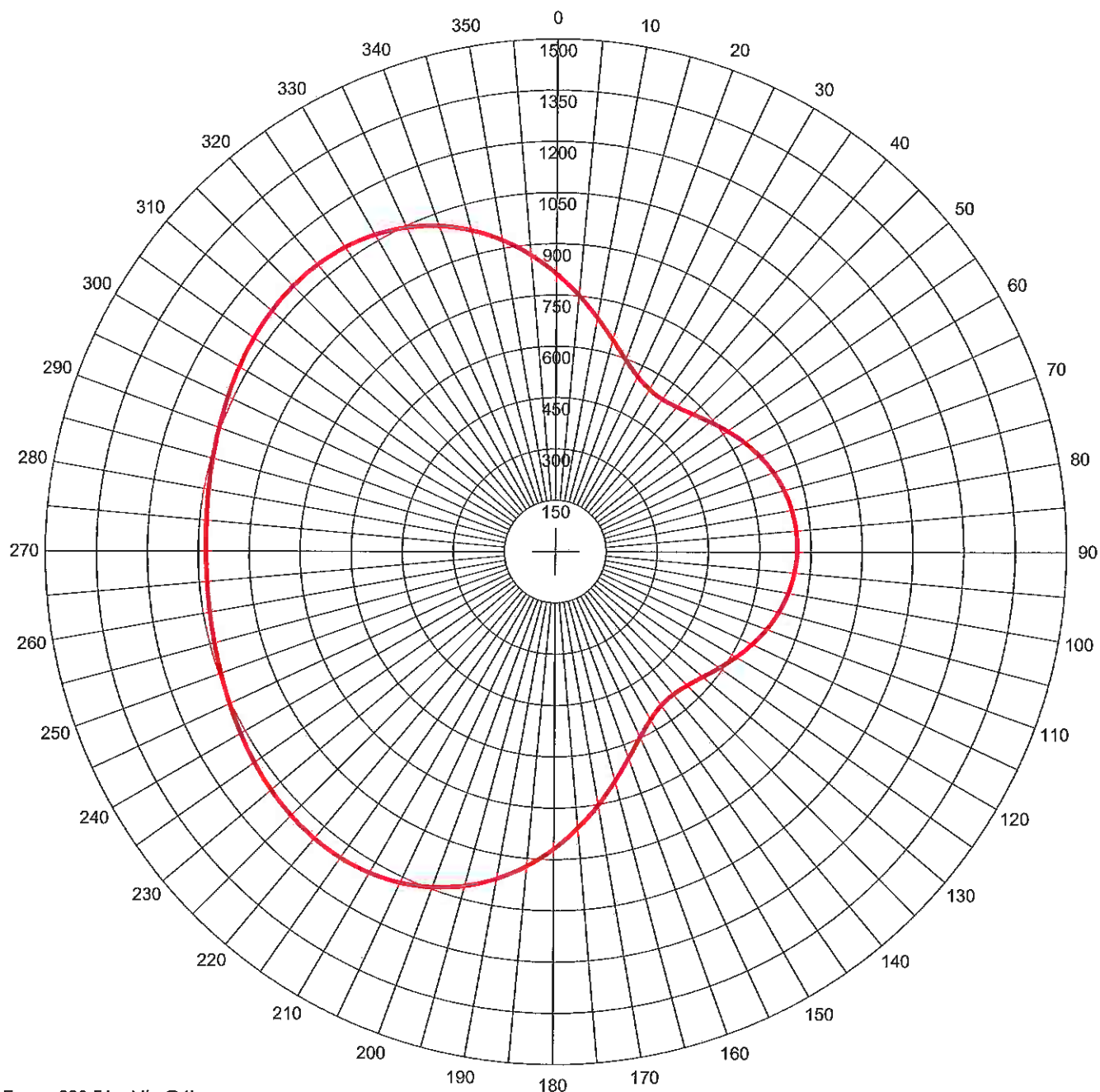
KABC - 790 kHz - LOS ANGELES, CA, US - N
 North Latitude: 34° 01' 10" West Longitude: 118° 20' 44"
 Power: 6.8 kW Theo RMS: 829.53 mV/m @ 1km @ 6.8 kW

#	Field Ratio	Phase (deg)	Spacing (deg)	Orient (deg)	Height (deg)	Ref Swch	TL Swch	A (deg)	B (deg)	C (deg)	D (deg)
1	0.336	95.0	0.0	0.0	105.8	0	0	0.0	0.0	0.0	0.0
2	1.000	0.0	143.1	267.5	105.8	0	0	0.0	0.0	0.0	0.0

 Standard Horizontal Plane Pattern

Azimuth (Deg)	Field (mV/m @1km)	Azimuth (Deg)	Field (mV/m @1km)	Azimuth (Deg)	Field (mV/m @1km)
0.0	817.58	5.0	757.64	10.0	699.36
15.0	646.35	20.0	602.28	25.0	570.32
30.0	552.39	35.0	548.52	40.0	556.80
45.0	574.03	50.0	596.70	55.0	621.60
60.0	646.20	65.0	668.65	70.0	687.69
75.0	702.51	80.0	712.61	85.0	717.73
90.0	717.73	95.0	712.61	100.0	702.51
105.0	687.69	110.0	668.65	115.0	646.20
120.0	621.60	125.0	596.70	130.0	574.03
135.0	556.80	140.0	548.52	145.0	552.39
150.0	570.32	155.0	602.28	160.0	646.35
165.0	699.36	170.0	757.64	175.0	817.58
180.0	876.03	185.0	930.37	190.0	978.60
195.0	1019.34	200.0	1051.84	205.0	1075.87
210.0	1091.72	215.0	1100.08	220.0	1101.95
225.0	1098.56	230.0	1091.24	235.0	1081.36
240.0	1070.21	245.0	1059.00	250.0	1048.76
255.0	1040.34	260.0	1034.36	265.0	1031.27
270.0	1031.27	275.0	1034.36	280.0	1040.34
285.0	1048.76	290.0	1059.00	295.0	1070.21
300.0	1081.36	305.0	1091.24	310.0	1098.56
315.0	1101.95	320.0	1100.08	325.0	1091.72
330.0	1075.87	335.0	1051.84	340.0	1019.34
345.0	978.60	350.0	930.37	355.0	876.03

KABC Proposed Nighttime AM Directional Pattern



Erss = 828.51 mV/m@1km
 Theo RMS: 829.534 mV/m@1km
 Std RMS: 871.441 mV/m@1km
 Q: 26.077 mV/m@1km

Standard Pattern at Theta = 5.00 Degrees

— Pattern (mV/m @ 1km)
 — Pattern X10

#	Field Ratio	Phase (deg)	Spacing (deg)	Orient (deg)	Height (deg)	Ref Switch	TL Switch	A (deg)	B (deg)	C (deg)	D (deg)
1	0.336	95.0	0.0	0.0	105.8	0	0	0.0	0.0	0.0	0.0
2	1.000	0.0	143.1	267.5	105.8	0	0	0.0	0.0	0.0	0.0

Call: KABC
 Freq: 790 kHz
 LOS ANGELES, CA, US
 Hours: N
 Lat: 34-01-10 N
 Lng: 118-20-44 W
 Power: 6.8 kW
 Theo RMS: 829.53 mV/m@1km
 @ 6.8 kW

EXHIBIT #1N2a

MINOR CHANGE APPLICATION
AMENDMENT TO BP-20151013ABI
RADIO LICENSE HOLDINGS, LLC
KABC AM RADIO STATION
790 kHz - 6.8/6.6 kW - DAN
LOS ANGELES, CALIFORNIA
November 2015

EXHIBIT #1N2b

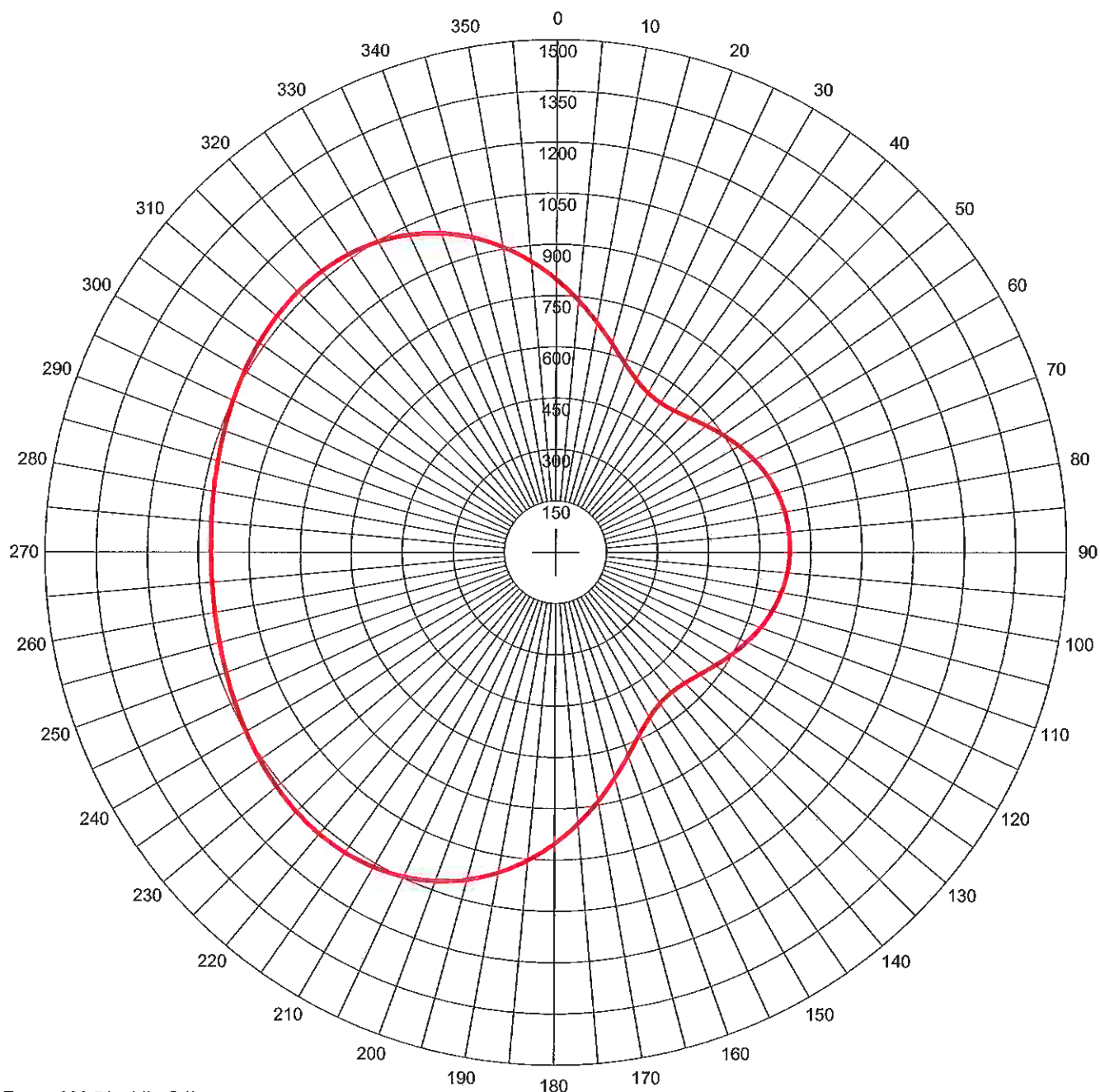
KABC - 790 kHz - LOS ANGELES, CA, US - N
 North Latitude: 34° 01' 10" West Longitude: 118° 20' 44"
 Power: 6.8 kW Theo RMS: 829.53 mV/m @ 1km @ 6.8 kW

#	Field Ratio	Phase (deg)	Spacing (deg)	Orient (deg)	Height (deg)	Ref Swch	TL Swch	A (deg)	B (deg)	C (deg)	D (deg)
1	0.336	95.0	0.0	0.0	105.8	0	0	0.0	0.0	0.0	0.0
2	1.000	0.0	143.1	267.5	105.8	0	0	0.0	0.0	0.0	0.00

Standard Pattern
 Calculated at 5.0 Degrees Elevation

Azimuth (Deg)	Field (mV/m @1km)	Azimuth (Deg)	Field (mV/m @1km)	Azimuth (Deg)	Field (mV/m @1km)
0.0	812.48	5.0	753.15	10.0	695.45
15.0	642.90	20.0	599.13	25.0	567.25
30.0	549.17	35.0	544.94	40.0	552.72
45.0	569.41	50.0	591.53	55.0	615.94
60.0	640.10	65.0	662.20	70.0	680.97
75.0	695.59	80.0	705.56	85.0	710.61
90.0	710.61	95.0	705.56	100.0	695.59
105.0	680.97	110.0	662.20	115.0	640.10
120.0	615.94	125.0	591.53	130.0	569.41
135.0	552.72	140.0	544.94	145.0	549.17
150.0	567.25	155.0	599.13	160.0	642.90
165.0	695.45	170.0	753.15	175.0	812.48
180.0	870.34	185.0	924.14	190.0	971.93
195.0	1012.34	200.0	1044.62	205.0	1068.56
210.0	1084.43	215.0	1092.90	220.0	1094.96
225.0	1091.82	230.0	1084.78	235.0	1075.18
240.0	1064.33	245.0	1053.38	250.0	1043.37
255.0	1035.12	260.0	1029.27	265.0	1026.24
270.0	1026.24	275.0	1029.27	280.0	1035.12
285.0	1043.37	290.0	1053.38	295.0	1064.33
300.0	1075.18	305.0	1084.78	310.0	1091.82
315.0	1094.96	320.0	1092.90	325.0	1084.43
330.0	1068.56	335.0	1044.62	340.0	1012.34
345.0	971.93	350.0	924.14	355.0	870.34

KABC Proposed Nighttime AM Directional Pattern



Erss = 828.51 mV/m@1km
 Theo RMS: 829.534 mV/m@1km
 Std RMS: 871.441 mV/m@1km
 Q: 26.077 mV/m@1km

Standard Pattern at Theta = 10.00 Degrees

— Pattern (mV/m @ 1km)
 — Pattern X10

#	Field Ratio	Phase (deg)	Spacing (deg)	Orient (deg)	Height (deg)	Ref Swch	TL Swch	A (deg)	B (deg)	C (deg)	D (deg)
1	0.336	95.0	0.0	0.0	105.8	0	0	0.0	0.0	0.0	0.0
2	1.000	0.0	143.1	267.5	105.8	0	0	0.0	0.0	0.0	0.0

Call: KABC
 Freq: 790 kHz
 LOS ANGELES, CA, US
 Hours: N
 Lat: 34-01-10 N
 Lng: 118-20-44 W
 Power: 6.8 kW
 Theo RMS: 829.53 mV/m@1km
 @ 6.8 kW

EXHIBIT #1N3a

MINOR CHANGE APPLICATION
AMENDMENT TO BP-20151013ABI
RADIO LICENSE HOLDINGS, LLC
KABC AM RADIO STATION
790 kHz - 6.8/6.6 kW - DAN
LOS ANGELES, CALIFORNIA
November 2015

EXHIBIT #1N3b

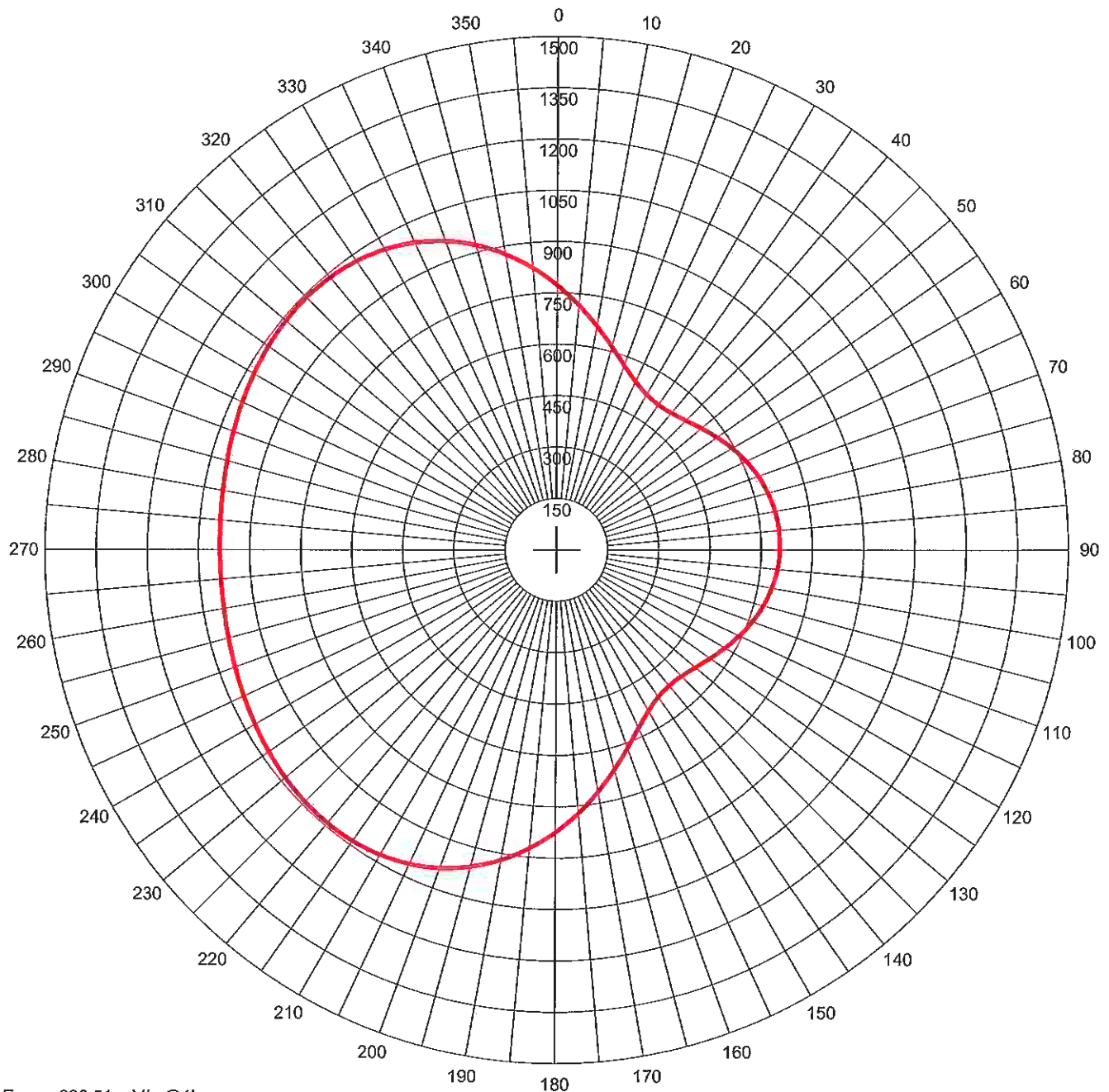
KABC - 790 kHz - LOS ANGELES, CA, US - N
 North Latitude: 34° 01' 10" West Longitude: 118° 20' 44"
 Power: 6.8 kW Theo RMS: 829.53 mV/m @ 1km @ 6.8 kW

#	Field Ratio	Phase Spacing (deg)	Orient (deg)	Height (deg)	Ref Swch	TL Swch	A (deg)	B (deg)	C (deg)	D (deg)
1	0.336	95.0	0.0	0.0	105.8	0	0	0.0	0.0	0.0
2	1.000	0.0	143.1	267.5	105.8	0	0	0.0	0.0	0.0

Standard Pattern
 Calculated at 10.0 Degrees Elevation

Azimuth (Deg)	Field (mV/m @1km)	Azimuth (Deg)	Field (mV/m @1km)	Azimuth (Deg)	Field (mV/m @1km)
0.0	797.38	5.0	739.84	10.0	683.82
15.0	632.67	20.0	589.80	25.0	558.19
30.0	539.68	35.0	534.43	40.0	540.78
45.0	555.87	50.0	576.39	55.0	599.33
60.0	622.23	65.0	643.28	70.0	661.23
75.0	675.25	80.0	684.83	85.0	689.68
90.0	689.68	95.0	684.83	100.0	675.25
105.0	661.23	110.0	643.28	115.0	622.23
120.0	599.33	125.0	576.39	130.0	555.87
135.0	540.78	140.0	534.43	145.0	539.68
150.0	558.19	155.0	589.80	160.0	632.67
165.0	683.82	170.0	739.84	175.0	797.38
180.0	853.49	185.0	905.72	190.0	952.20
195.0	991.63	200.0	1023.27	205.0	1046.92
210.0	1062.82	215.0	1071.60	220.0	1074.21
225.0	1071.78	230.0	1065.55	235.0	1056.81
240.0	1046.78	245.0	1036.60	250.0	1027.25
255.0	1019.52	260.0	1014.03	265.0	1011.18
270.0	1011.18	275.0	1014.03	280.0	1019.52
285.0	1027.25	290.0	1036.60	295.0	1046.78
300.0	1056.81	305.0	1065.55	310.0	1071.78
315.0	1074.21	320.0	1071.60	325.0	1062.82
330.0	1046.92	335.0	1023.27	340.0	991.63
345.0	952.20	350.0	905.72	355.0	853.49

KABC Proposed Nighttime AM Directional Pattern



Erss = 828.51 mV/m@1km
 Theo RMS: 829.534 mV/m@1km
 Std RMS: 871.441 mV/m@1km
 Q: 26.077 mV/m@1km

Standard Pattern at Theta = 15.00 Degrees

— Pattern (mV/m @ 1km)
 — Pattern X10

#	Field Ratio	Phase (deg)	Spacing (deg)	Orient (deg)	Height (deg)	Ref Switch	TL Switch	A (deg)	B (deg)	C (deg)	D (deg)
1	0.336	95.0	0.0	0.0	105.8	0	0	0.0	0.0	0.0	0.0
2	1.000	0.0	143.1	267.5	105.8	0	0	0.0	0.0	0.0	0.0

Call: KABC
 Freq: 790 kHz
 LOS ANGELES, CA, US
 Hours: N
 Lat: 34-01-10 N
 Lng: 118-20-44 W
 Power: 6.8 kW
 Theo RMS: 829.53 mV/m@1km
 @ 6.8 kW

EXHIBIT #1N4a

MINOR CHANGE APPLICATION
AMENDMENT TO BP-20151013ABI
RADIO LICENSE HOLDINGS, LLC
KABC AM RADIO STATION
790 kHz - 6.8/6.6 kW - DAN
LOS ANGELES, CALIFORNIA
November 2015

EXHIBIT #1N4b

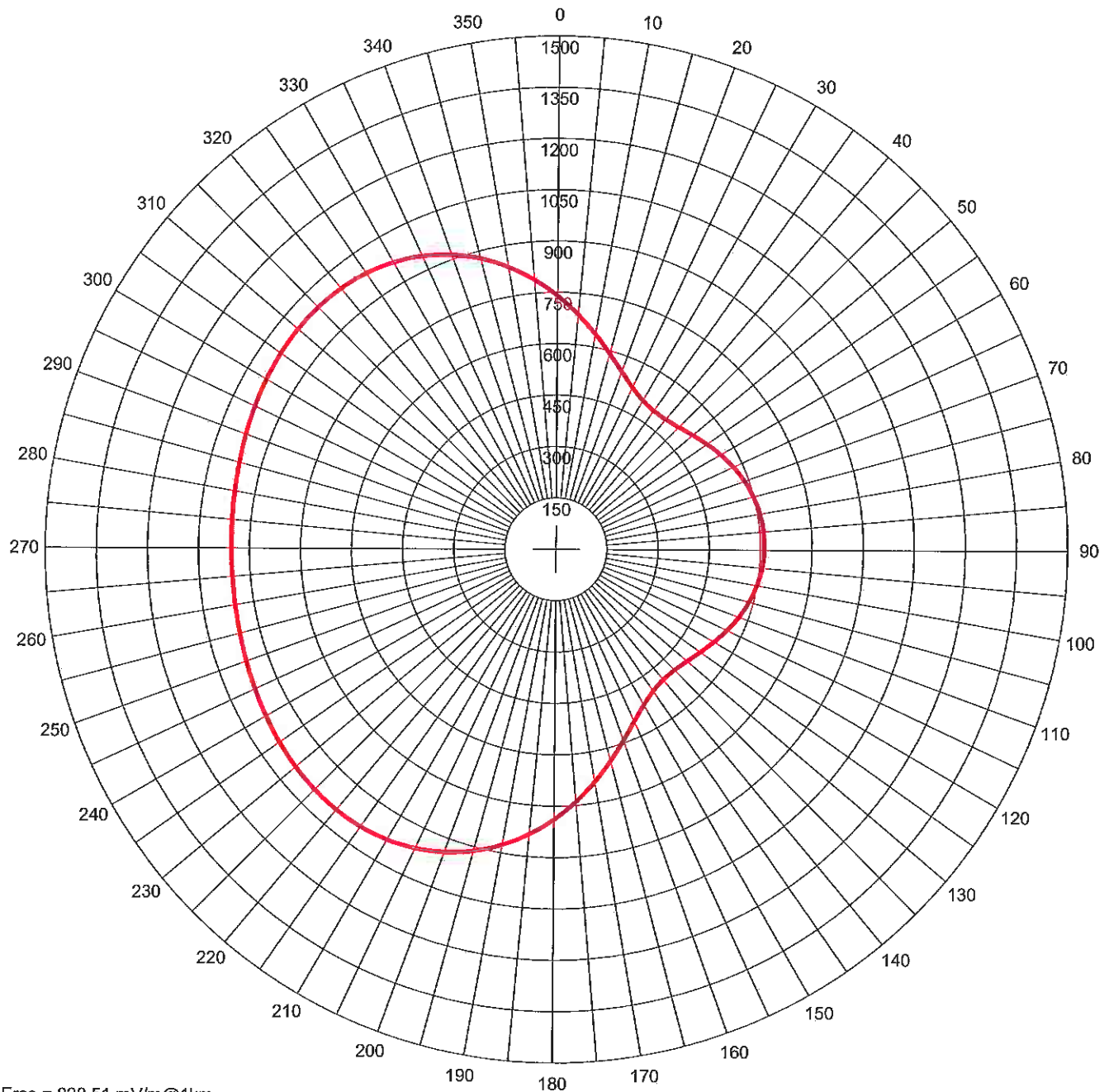
KABC - 790 kHz - LOS ANGELES, CA, US - N
 North Latitude: 34° 01' 10" West Longitude: 118° 20' 44"
 Power: 6.8 kW Theo RMS: 829.53 mV/m @ 1km @ 6.8 kW

#	Field Ratio	Phase (deg)	Spacing (deg)	Orient (deg)	Height (deg)	Ref Switch	TL Switch	A (deg)	B (deg)	C (deg)	D (deg)
1	0.336	95.0	0.0	0.0	105.8	0	0	0.0	0.0	0.0	0.0
2	1.000	0.0	143.1	267.5	105.8	0	0	0.0	0.0	0.0	0.0

Standard Pattern
 Calculated at 15.0 Degrees Elevation

Azimuth (Deg)	Field (mV/m @1km)	Azimuth (Deg)	Field (mV/m @1km)	Azimuth (Deg)	Field (mV/m @1km)
0.0	772.84	5.0	718.18	10.0	664.88
15.0	615.99	20.0	574.62	25.0	543.51
30.0	524.43	35.0	517.63	40.0	521.78
45.0	534.33	50.0	552.31	55.0	572.89
60.0	593.74	65.0	613.09	70.0	629.70
75.0	642.74	80.0	651.67	85.0	656.21
90.0	656.21	95.0	651.67	100.0	642.74
105.0	629.70	110.0	613.09	115.0	593.74
120.0	572.89	125.0	552.31	130.0	534.33
135.0	521.78	140.0	517.63	145.0	524.43
150.0	543.51	155.0	574.62	160.0	615.99
165.0	664.88	170.0	718.18	175.0	772.84
180.0	826.15	185.0	875.85	190.0	920.22
195.0	958.05	200.0	988.63	205.0	1011.78
210.0	1027.69	215.0	1036.93	220.0	1040.36
225.0	1039.02	230.0	1034.05	235.0	1026.63
240.0	1017.91	245.0	1008.94	250.0	1000.62
255.0	993.71	260.0	988.79	265.0	986.23
270.0	986.23	275.0	988.79	280.0	993.71
285.0	1000.62	290.0	1008.94	295.0	1017.91
300.0	1026.63	305.0	1034.05	310.0	1039.02
315.0	1040.36	320.0	1036.93	325.0	1027.69
330.0	1011.78	335.0	988.63	340.0	958.05
345.0	920.22	350.0	875.85	355.0	826.15

KABC Proposed Nighttime AM Directional Pattern



Erss = 828.51 mV/m@1km
 Theo RMS: 829.534 mV/m@1km
 Std RMS: 871.441 mV/m@1km
 Q: 26.077 mV/m@1km

Standard Pattern at Theta = 20.00 Degrees

— Pattern (mV/m @ 1km)
 — Pattern X10

#	Field Ratio	Phase (deg)	Spacing (deg)	Orient (deg)	Height (deg)	Ref Switch	TL Switch	A (deg)	B (deg)	C (deg)	D (deg)
1	0.336	95.0	0.0	0.0	105.8	0	0	0.0	0.0	0.0	0.0
2	1.000	0.0	143.1	267.5	105.8	0	0	0.0	0.0	0.0	0.0

Call: KABC
 Freq: 790 kHz
 LOS ANGELES, CA, US
 Hours: N
 Lat: 34-01-10 N
 Lng: 118-20-44 W
 Power: 6.8 kW
 Theo RMS: 829.53 mV/m@1km
 @ 6.8 kW

EXHIBIT #1N5a

MINOR CHANGE APPLICATION
AMENDMENT TO BP-20151013ABI
RADIO LICENSE HOLDINGS, LLC
KABC AM RADIO STATION
790 kHz - 6.8/6.6 kW - DAN
LOS ANGELES, CALIFORNIA
November 2015

EXHIBIT #1N5b

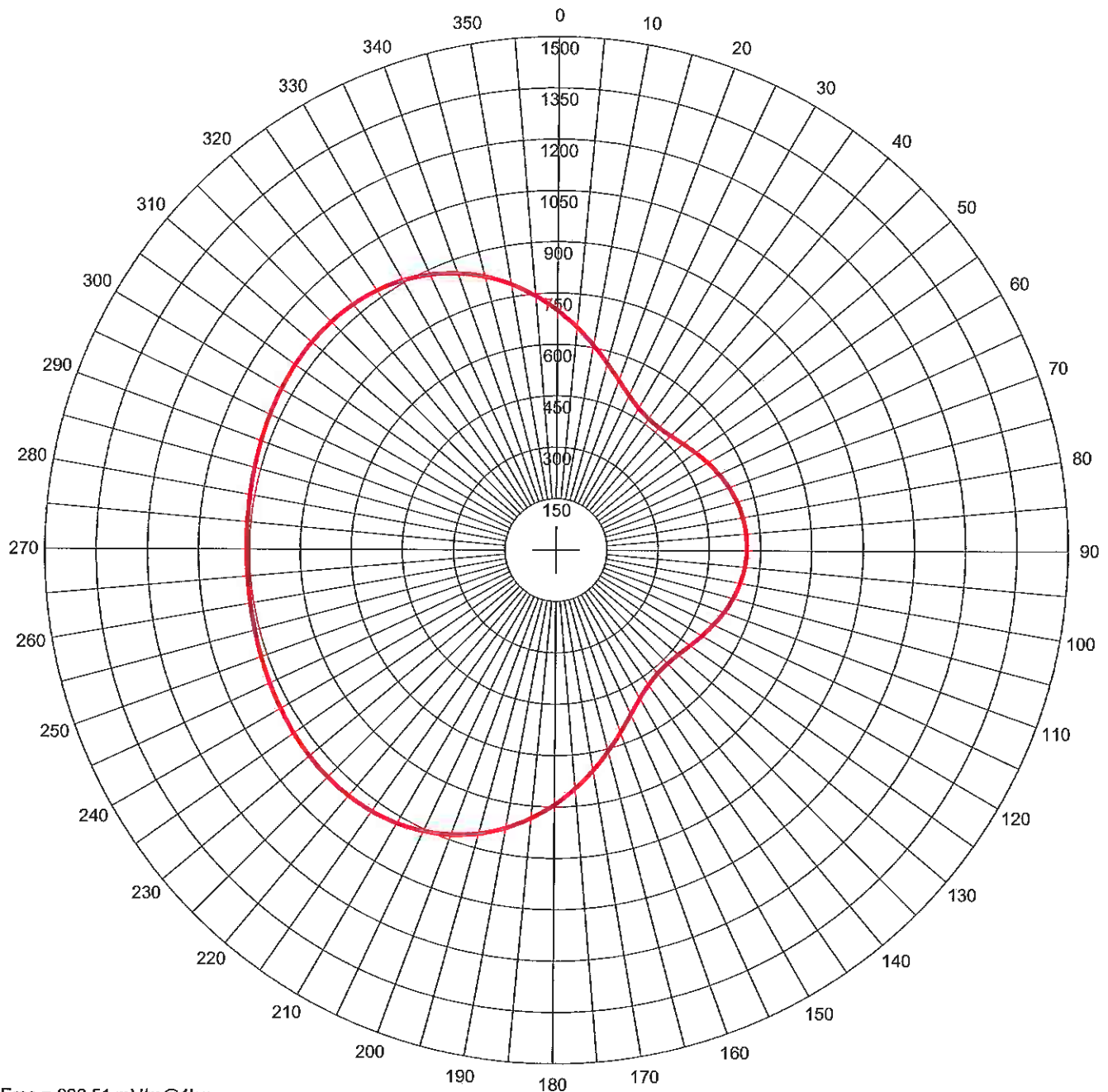
KABC - 790 kHz - LOS ANGELES, CA, US - N
 North Latitude: 34° 01' 10" West Longitude: 118° 20' 44"
 Power: 6.8 kW Theo RMS: 829.53 mV/m @ 1km @ 6.8 kW

#	Field Ratio	Phase (deg)	Spacing (deg)	Orient (deg)	Height (deg)	Ref Swtch	TL Swtch	A (deg)	B (deg)	C (deg)	D (deg)
1	0.336	95.0	0.0	0.0	105.8	0	0	0.0	0.0	0.0	0.0
2	1.000	0.0	143.1	267.5	105.8	0	0	0.0	0.0	0.0	0.0

Standard Pattern
 Calculated at 20.0 Degrees Elevation

Azimuth (Deg)	Field (mV/m @1km)	Azimuth (Deg)	Field (mV/m @1km)	Azimuth (Deg)	Field (mV/m @1km)
0.0	739.77	5.0	688.93	10.0	639.23
15.0	593.37	20.0	554.09	25.0	523.81
30.0	504.16	35.0	495.53	40.0	496.92
45.0	506.24	50.0	520.91	55.0	538.38
60.0	556.49	65.0	573.55	70.0	588.35
75.0	600.04	80.0	608.10	85.0	612.20
90.0	612.20	95.0	608.10	100.0	600.04
105.0	588.35	110.0	573.55	115.0	556.49
120.0	538.38	125.0	520.91	130.0	506.24
135.0	496.92	140.0	495.53	145.0	504.16
150.0	523.81	155.0	554.09	160.0	593.37
165.0	639.23	170.0	688.93	175.0	739.77
180.0	789.37	185.0	835.72	190.0	877.27
195.0	912.93	200.0	942.06	205.0	964.46
210.0	980.29	215.0	990.05	220.0	994.47
225.0	994.47	230.0	991.08	235.0	985.34
240.0	978.27	245.0	970.83	250.0	963.84
255.0	957.98	260.0	953.79	265.0	951.60
270.0	951.60	275.0	953.79	280.0	957.98
285.0	963.84	290.0	970.83	295.0	978.27
300.0	985.34	305.0	991.08	310.0	994.47
315.0	994.47	320.0	990.05	325.0	980.29
330.0	964.46	335.0	942.06	340.0	912.93
345.0	877.27	350.0	835.72	355.0	789.37

KABC Proposed Nighttime AM Directional Pattern



Erss = 828.51 mV/m@1km
 Theo RMS: 829.534 mV/m@1km
 Std RMS: 871.441 mV/m@1km
 Q: 26.077 mV/m@1km

Standard Pattern at Theta = 25.00 Degrees

— Pattern (mV/m @ 1km)
 — Pattern X10

#	Field Ratio	Phase (deg)	Spacing (deg)	Orient (deg)	Height (deg)	Ref Switch	TL Switch	A (deg)	B (deg)	C (deg)	D (deg)
1	0.336	95.0	0.0	0.0	105.8	0	0	0.0	0.0	0.0	0.0
2	1.000	0.0	143.1	267.5	105.8	0	0	0.0	0.0	0.0	0.0

Call: KABC
 Freq: 790 kHz
 LOS ANGELES, CA, US
 Hours: N
 Lat: 34-01-10 N
 Lng: 118-20-44 W
 Power: 6.8 kW
 Theo RMS: 829.53 mV/m@1km
 @ 6.8 kW

EXHIBIT #1N6a

MINOR CHANGE APPLICATION
AMENDMENT TO BP-20151013ABI
RADIO LICENSE HOLDINGS, LLC
KABC AM RADIO STATION
790 kHz - 6.8/6.6 kW - DAN
LOS ANGELES, CALIFORNIA
November 2015

EXHIBIT #1N6b

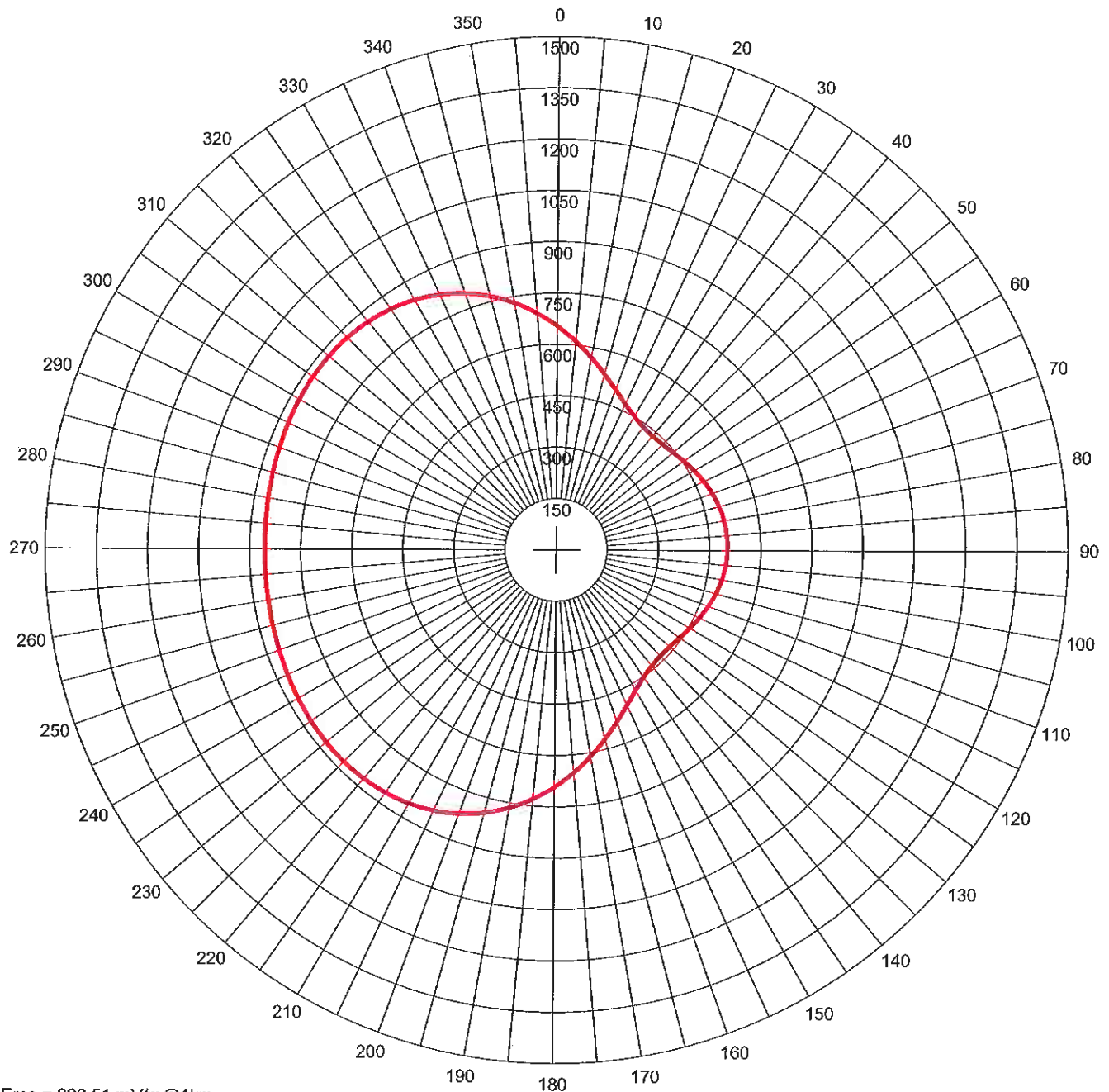
KABC - 790 kHz - LOS ANGELES, CA, US - N
 North Latitude: 34° 01' 10" West Longitude: 118° 20' 44"
 Power: 6.8 kW Theo RMS: 829.53 mV/m @ 1km @ 6.8 kW

#	Field Ratio	Phase (deg)	Spacing (deg)	Orient (deg)	Height (deg)	Ref Swch	TL Swch	A (deg)	B (deg)	C (deg)	D (deg)
1	0.336	95.0	0.0	0.0	105.8	0	0	0.0	0.0	0.0	0.0
2	1.000	0.0	143.1	267.5	105.8	0	0	0.0	0.0	0.0	0.0

Standard Pattern
 Calculated at 25.0 Degrees Elevation

Azimuth (Deg)	Field (mV/m @1km)	Azimuth (Deg)	Field (mV/m @1km)	Azimuth (Deg)	Field (mV/m @1km)
0.0	699.32	5.0	653.03	10.0	607.67
15.0	565.50	20.0	528.85	25.0	499.79
30.0	479.79	35.0	469.31	40.0	467.71
45.0	473.38	50.0	484.21	55.0	498.01
60.0	512.84	65.0	527.12	70.0	539.70
75.0	549.74	80.0	556.71	85.0	560.27
90.0	560.27	95.0	556.71	100.0	549.74
105.0	539.70	110.0	527.12	115.0	512.84
120.0	498.01	125.0	484.21	130.0	473.38
135.0	467.71	140.0	469.31	145.0	479.79
150.0	499.79	155.0	528.85	160.0	565.50
165.0	607.67	170.0	653.03	175.0	699.32
180.0	744.49	185.0	786.82	190.0	824.97
195.0	857.98	200.0	885.29	205.0	906.68
210.0	922.29	215.0	932.50	220.0	937.95
225.0	939.41	230.0	937.74	235.0	933.86
240.0	928.66	245.0	922.95	250.0	917.46
255.0	912.80	260.0	909.44	265.0	907.68
270.0	907.68	275.0	909.44	280.0	912.80
285.0	917.46	290.0	922.95	295.0	928.66
300.0	933.86	305.0	937.74	310.0	939.41
315.0	937.95	320.0	932.50	325.0	922.29
330.0	906.68	335.0	885.29	340.0	857.98
345.0	824.97	350.0	786.82	355.0	744.49

KABC Proposed Nighttime AM Directional Pattern



Erss = 828.51 mV/m@1km
 Theo RMS: 829.534 mV/m@1km
 Std RMS: 871.441 mV/m@1km
 Q: 26.077 mV/m@1km

Standard Pattern at Theta = 30.00 Degrees

— Pattern (mV/m @ 1km)
 — Pattern X10

#	Field Ratio	Phase (deg)	Spacing (deg)	Orient (deg)	Height (deg)	Ref Switch	TL Switch	A (deg)	B (deg)	C (deg)	D (deg)
1	0.336	95.0	0.0	0.0	105.8	0	0	0.0	0.0	0.0	0.0
2	1.000	0.0	143.1	267.5	105.8	0	0	0.0	0.0	0.0	0.0

Call: KABC
 Freq: 790 kHz
 LOS ANGELES, CA, US
 Hours: N
 Lat: 34-01-10 N
 Lng: 118-20-44 W
 Power: 6.8 kW
 Theo RMS: 829.53 mV/m@1km
 @ 6.8 kW

EXHIBIT #1N7a

MINOR CHANGE APPLICATION
AMENDMENT TO BP-20151013ABI
RADIO LICENSE HOLDINGS, LLC
KABC AM RADIO STATION
790 kHz - 6.8/6.6 kW - DAN
LOS ANGELES, CALIFORNIA
November 2015

EXHIBIT #1N7b

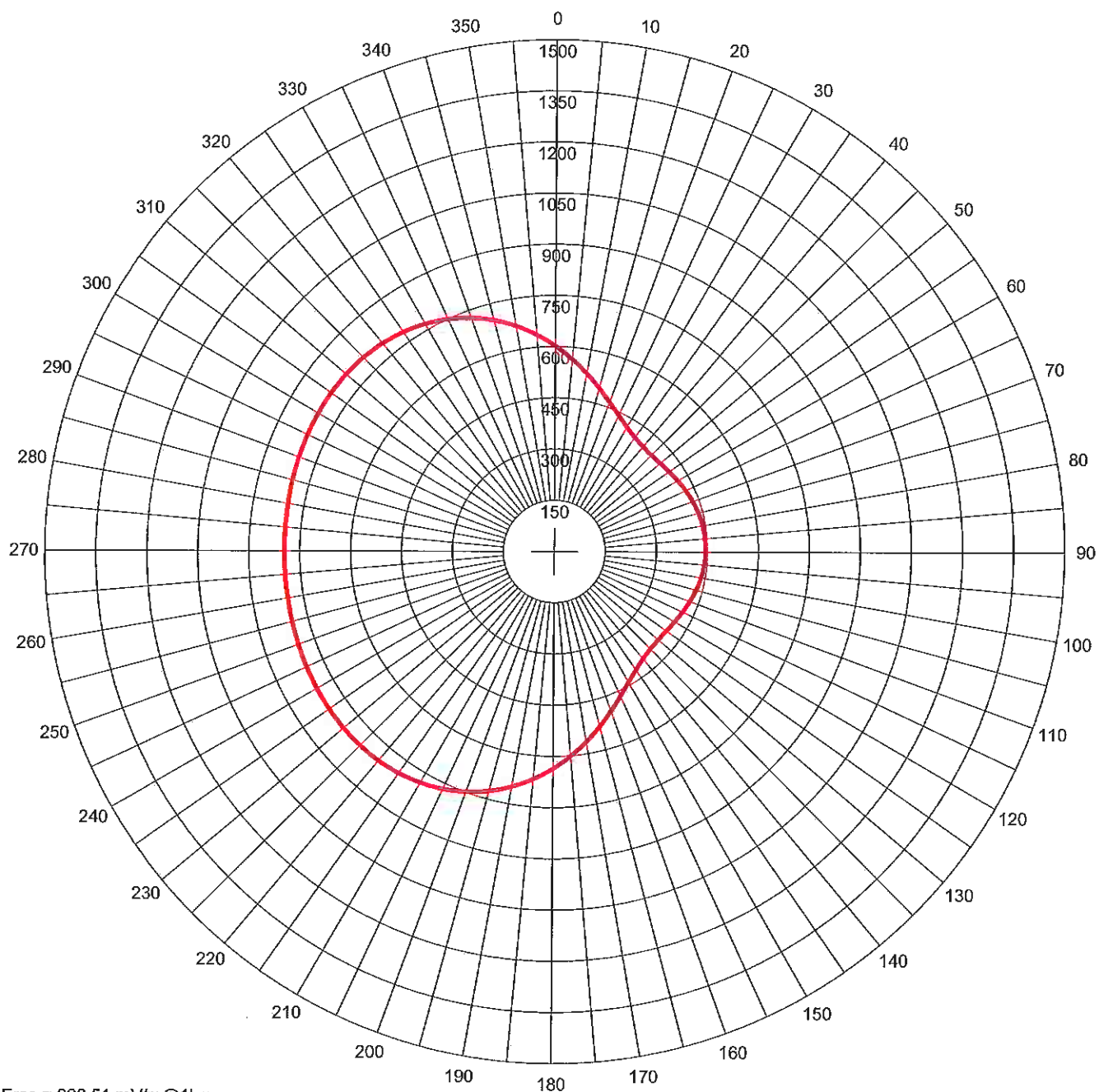
KABC - 790 kHz - LOS ANGELES, CA, US - N
 North Latitude: 34° 01' 10" West Longitude: 118° 20' 44"
 Power: 6.8 kW Theo RMS: 829.53 mV/m @ 1km @ 6.8 kW

#	Field Ratio	Phase Spacing (deg)	Orient (deg)	Height (deg)	Ref Swch	TL Swch	A (deg)	B (deg)	C (deg)	D (deg)
1	0.336	95.0	0.0	0.0	105.8	0	0	0.0	0.0	0.0
2	1.000	0.0	143.1	267.5	105.8	0	0	0.0	0.0	0.0

Standard Pattern
 Calculated at 30.0 Degrees Elevation

Azimuth (Deg)	Field (mV/m @1km)	Azimuth (Deg)	Field (mV/m @1km)	Azimuth (Deg)	Field (mV/m @1km)
0.0	652.81	5.0	611.60	10.0	571.09
15.0	533.13	20.0	499.61	25.0	472.24
30.0	452.25	35.0	440.19	40.0	435.70
45.0	437.66	50.0	444.43	55.0	454.25
60.0	465.44	65.0	476.61	70.0	486.66
75.0	494.81	80.0	500.51	85.0	503.45
90.0	503.45	95.0	500.51	100.0	494.81
105.0	486.66	110.0	476.61	115.0	465.44
120.0	454.25	125.0	444.43	130.0	437.66
135.0	435.70	140.0	440.19	145.0	452.25
150.0	472.24	155.0	499.61	160.0	533.13
165.0	571.09	170.0	611.60	175.0	652.81
180.0	693.05	185.0	730.88	190.0	765.19
195.0	795.17	200.0	820.31	205.0	840.42
210.0	855.58	215.0	866.10	220.0	872.47
225.0	875.33	230.0	875.38	235.0	873.39
240.0	870.08	245.0	866.16	250.0	862.24
255.0	858.84	260.0	856.34	265.0	855.03
270.0	855.03	275.0	856.34	280.0	858.84
285.0	862.24	290.0	866.16	295.0	870.08
300.0	873.39	305.0	875.38	310.0	875.33
315.0	872.47	320.0	866.10	325.0	855.58
330.0	840.42	335.0	820.31	340.0	795.17
345.0	765.19	350.0	730.88	355.0	693.05

KABC Proposed Nighttime AM Directional Pattern



Erss = 828.51 mV/m@1km
 Theo RMS: 829.534 mV/m@1km
 Std RMS: 871.441 mV/m@1km
 Q: 26.077 mV/m@1km

Standard Pattern at Theta = 35.00 Degrees

— Pattern (mV/m @ 1km)
 — Pattern X10

#	Field Ratio	Phase (deg)	Spacing (deg)	Orient (deg)	Height (deg)	Ref Switch	TL Switch	A (deg)	B (deg)	C (deg)	D (deg)
1	0.336	95.0	0.0	0.0	105.8	0	0	0.0	0.0	0.0	0.0
2	1.000	0.0	143.1	267.5	105.8	0	0	0.0	0.0	0.0	0.0

Call: KABC
 Freq: 790 kHz
 LOS ANGELES, CA, US
 Hours: N
 Lat: 34-01-10 N
 Lng: 118-20-44 W
 Power: 6.8 kW
 Theo RMS: 829.53 mV/m@1km
 @ 6.8 kW

EXHIBIT #1N8a

MINOR CHANGE APPLICATION
AMENDMENT TO BP-20151013ABI
RADIO LICENSE HOLDINGS, LLC
KABC AM RADIO STATION
790 kHz - 6.8/6.6 kW - DAN
LOS ANGELES, CALIFORNIA
November 2015

EXHIBIT #1N8b

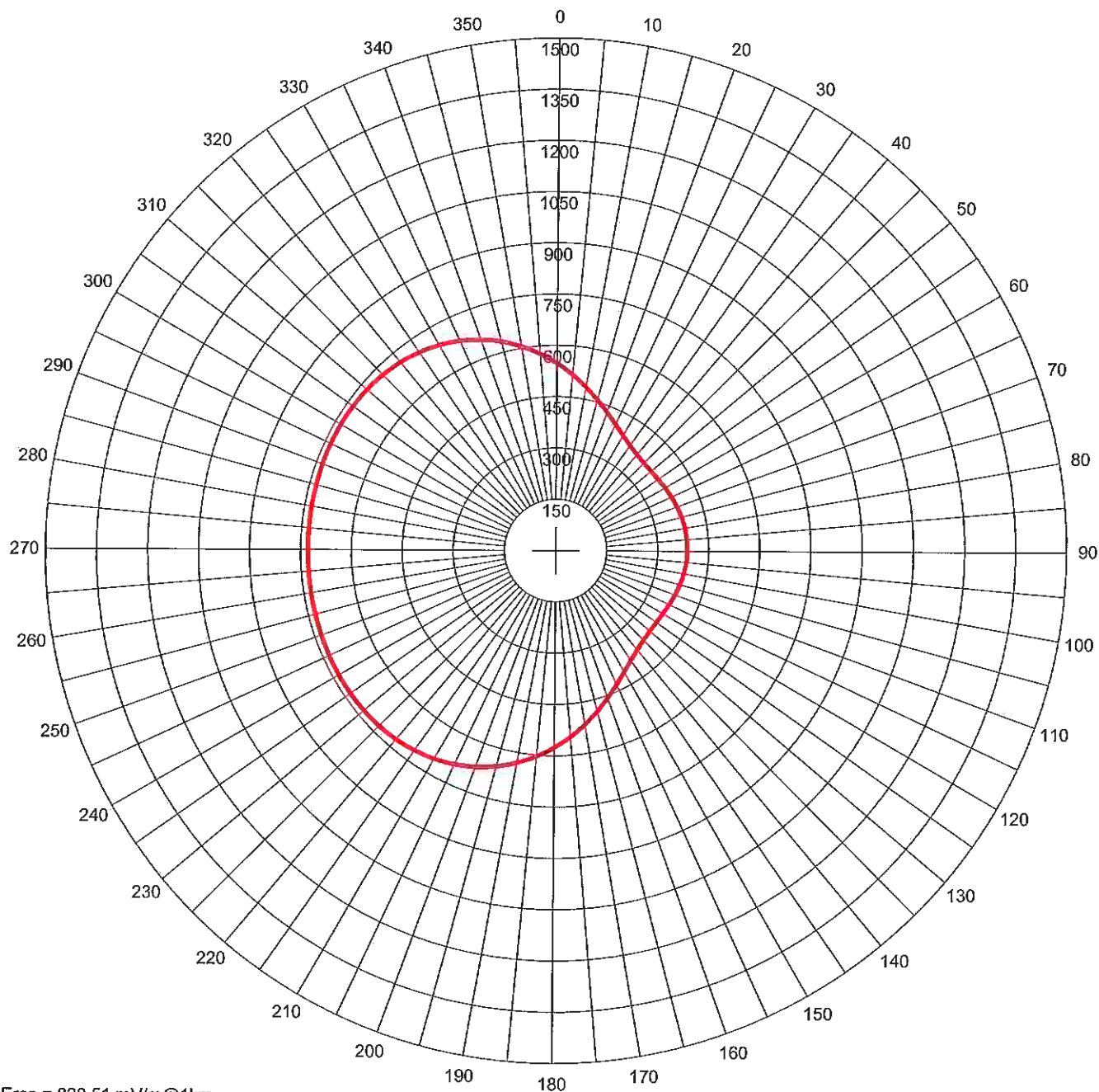
KABC - 790 kHz - LOS ANGELES, CA, US - N
 North Latitude: 34° 01' 10" West Longitude: 118° 20' 44"
 Power: 6.8 kW Theo RMS: 829.53 mV/m @ 1km @ 6.8 kW

#	Field Ratio	Phase (deg)	Spacing (deg)	Orient (deg)	Height (deg)	Ref Swtch	TL Swtch	A (deg)	B (deg)	C (deg)	D (deg)
1	0.336	95.0	0.0	0.0	105.8	0	0	0.0	0.0	0.0	0.0
2	1.000	0.0	143.1	267.5	105.8	0	0	0.0	0.0	0.0	0.0

Standard Pattern
 Calculated at 35.0 Degrees Elevation

Azimuth (Deg)	Field (mV/m @1km)	Azimuth (Deg)	Field (mV/m @1km)	Azimuth (Deg)	Field (mV/m @1km)
0.0	601.64	5.0	565.80	10.0	530.45
15.0	497.05	20.0	467.08	25.0	441.86
30.0	422.43	35.0	409.30	40.0	402.35
45.0	400.89	50.0	403.74	55.0	409.57
60.0	417.02	65.0	424.91	70.0	432.27
75.0	438.38	80.0	442.72	85.0	444.96
90.0	444.96	95.0	442.72	100.0	438.38
105.0	432.27	110.0	424.91	115.0	417.02
120.0	409.57	125.0	403.74	130.0	400.89
135.0	402.35	140.0	409.30	145.0	422.43
150.0	441.86	155.0	467.08	160.0	497.05
165.0	530.45	170.0	565.80	175.0	601.64
180.0	636.66	185.0	669.72	190.0	699.91
195.0	726.56	200.0	749.25	205.0	767.81
210.0	782.26	215.0	792.83	220.0	799.90
225.0	803.96	230.0	805.56	235.0	805.31
240.0	803.80	245.0	801.58	250.0	799.16
255.0	796.97	260.0	795.31	265.0	794.43
270.0	794.43	275.0	795.31	280.0	796.97
285.0	799.16	290.0	801.58	295.0	803.80
300.0	805.31	305.0	805.56	310.0	803.96
315.0	799.90	320.0	792.83	325.0	782.26
330.0	767.81	335.0	749.25	340.0	726.56
345.0	699.91	350.0	669.72	355.0	636.66

KABC Proposed Nighttime AM Directional Pattern



Erss = 828.51 mV/m@1km
 Theo RMS: 829.534 mV/m@1km
 Std RMS: 871.441 mV/m@1km
 Q: 26.077 mV/m@1km

Standard Pattern at Theta = 40.00 Degrees

— Pattern (mV/m @ 1km)
 — Pattern X10

#	Field Ratio	Phase (deg)	Spacing (deg)	Orient (deg)	Height (deg)	Ref Switch	TL Switch	A (deg)	B (deg)	C (deg)	D (deg)
1	0.336	95.0	0.0	0.0	105.8	0	0	0.0	0.0	0.0	0.0
2	1.000	0.0	143.1	267.5	105.8	0	0	0.0	0.0	0.0	0.0

Call: KABC
 Freq: 790 kHz
 LOS ANGELES, CA, US
 Hours: N
 Lat: 34-01-10 N
 Lng: 118-20-44 W
 Power: 6.8 kW
 Theo RMS: 829.53 mV/m@1km
 @ 6.8 kW

EXHIBIT #1N9a

MINOR CHANGE APPLICATION
AMENDMENT TO BP-20151013ABI
RADIO LICENSE HOLDINGS, LLC
KABC AM RADIO STATION
790 kHz - 6.8/6.6 kW - DAN
LOS ANGELES, CALIFORNIA
November 2015

EXHIBIT #1N9b

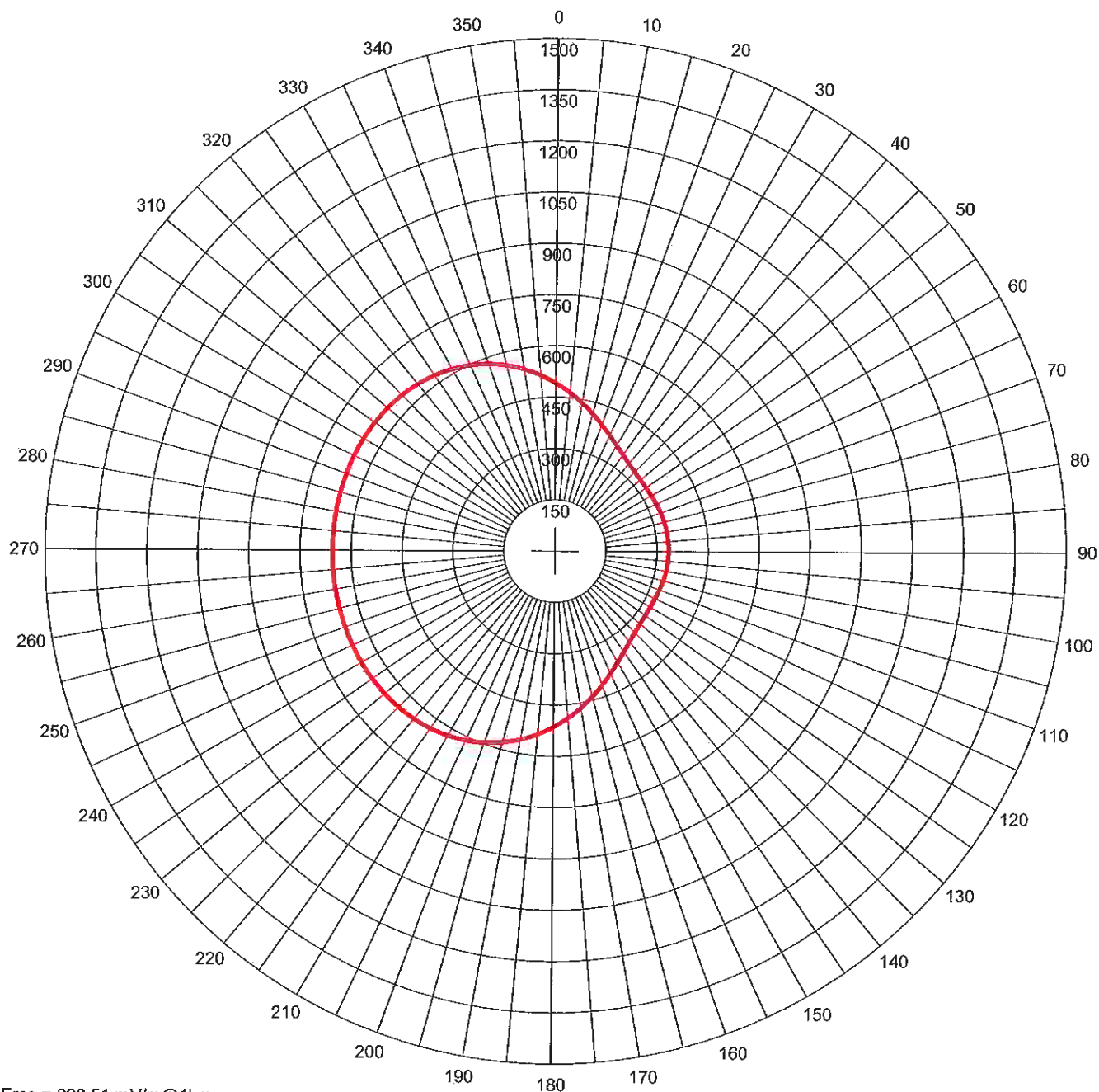
KABC - 790 kHz - LOS ANGELES, CA, US - N
 North Latitude: 34° 01' 10" West Longitude: 118° 20' 44"
 Power: 6.8 kW Theo RMS: 829.53 mV/m @ 1km @ 6.8 kW

#	Field Ratio	Phase (deg)	Spacing (deg)	Orient (deg)	Height (deg)	Ref Swch	TL Swch	A (deg)	B (deg)	C (deg)	D (deg)
1	0.336	95.0	0.0	0.0	105.8	0	0	0.0	0.0	0.0	0.0
2	1.000	0.0	143.1	267.5	105.8	0	0	0.0	0.0	0.0	0.0

Standard Pattern
 Calculated at 40.0 Degrees Elevation

Azimuth (Deg)	Field (mV/m @1km)	Azimuth (Deg)	Field (mV/m @1km)	Azimuth (Deg)	Field (mV/m @1km)
0.0	547.19	5.0	516.78	10.0	486.71
15.0	458.05	20.0	431.91	25.0	409.30
30.0	391.01	35.0	377.50	40.0	368.81
45.0	364.55	50.0	363.98	55.0	366.15
60.0	370.05	65.0	374.74	70.0	379.42
75.0	383.47	80.0	386.41	85.0	387.95
90.0	387.95	95.0	386.41	100.0	383.47
105.0	379.42	110.0	374.74	115.0	370.05
120.0	366.15	125.0	363.98	130.0	364.55
135.0	368.81	140.0	377.50	145.0	391.01
150.0	409.30	155.0	431.91	160.0	458.05
165.0	486.71	170.0	516.78	175.0	547.19
180.0	576.92	185.0	605.11	190.0	631.04
195.0	654.19	200.0	674.22	205.0	690.96
210.0	704.42	215.0	714.74	220.0	722.19
225.0	727.13	230.0	729.98	235.0	731.20
240.0	731.23	245.0	730.51	250.0	729.42
255.0	728.31	260.0	727.42	265.0	726.93
270.0	726.93	275.0	727.42	280.0	728.31
285.0	729.42	290.0	730.51	295.0	731.23
300.0	731.20	305.0	729.98	310.0	727.13
315.0	722.19	320.0	714.74	325.0	704.42
330.0	690.96	335.0	674.22	340.0	654.19
345.0	631.04	350.0	605.11	355.0	576.92

KABC Proposed Nighttime AM Directional Pattern



Erss = 828.51 mV/m@1km
 Theo RMS: 829.534 mV/m@1km
 Std RMS: 871.441 mV/m@1km
 Q: 26.077 mV/m@1km

Standard Pattern at Theta = 45.00 Degrees

— Pattern (mV/m @ 1km)
 — Pattern X10

#	Field Ratio	Phase (deg)	Spacing (deg)	Orient (deg)	Height (deg)	Ref Switch	TL Switch	A (deg)	B (deg)	C (deg)	D (deg)
1	0.336	95.0	0.0	0.0	105.8	0	0	0.0	0.0	0.0	0.0
2	1.000	0.0	143.1	267.5	105.8	0	0	0.0	0.0	0.0	0.0

Call: KABC
 Freq: 790 kHz
 LOS ANGELES, CA, US
 Hours: N
 Lat: 34-01-10 N
 Lng: 118-20-44 W
 Power: 6.8 kW
 Theo RMS: 829.53 mV/m@1km
 @ 6.8 kW

EXHIBIT #1N10a

MINOR CHANGE APPLICATION
AMENDMENT TO BP-20151013ABI
RADIO LICENSE HOLDINGS, LLC
KABC AM RADIO STATION
790 kHz - 6.8/6.6 kW - DAN
LOS ANGELES, CALIFORNIA
November 2015

EXHIBIT #1N10b

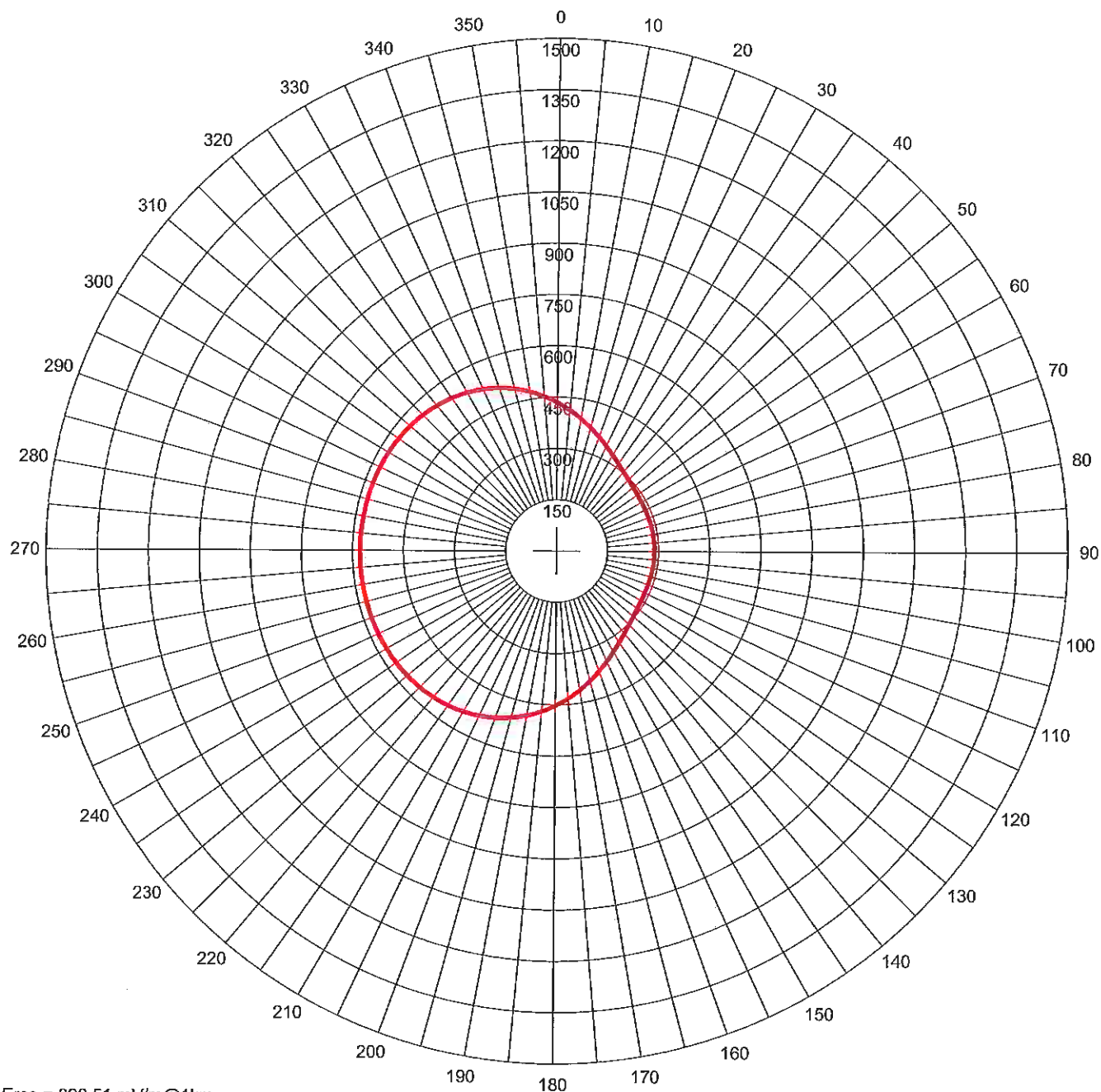
KABC - 790 kHz - LOS ANGELES, CA, US - N
 North Latitude: 34° 01' 10" West Longitude: 118° 20' 44"
 Power: 6.8 kW Theo RMS: 829.53 mV/m @ 1km @ 6.8 kW

#	Field Ratio	Phase (deg)	Spacing (deg)	Orient (deg)	Height (deg)	Ref Swtch	TL Swtch	A (deg)	B (deg)	C (deg)	D (deg)
1	0.336	95.0	0.0	0.0	105.8	0	0	0.0	0.0	0.0	0.0
2	1.000	0.0	143.1	267.5	105.8	0	0	0.0	0.0	0.0	0.0

Standard Pattern
 Calculated at 45.0 Degrees Elevation

Azimuth (Deg)	Field (mV/m @1km)	Azimuth (Deg)	Field (mV/m @1km)	Azimuth (Deg)	Field (mV/m @1km)
0.0	490.72	5.0	465.63	10.0	440.74
15.0	416.83	20.0	394.69	25.0	375.03
30.0	358.46	35.0	345.34	40.0	335.79
45.0	329.62	50.0	326.42	55.0	325.59
60.0	326.43	65.0	328.28	70.0	330.52
75.0	332.64	80.0	334.26	85.0	335.14
90.0	335.14	95.0	334.26	100.0	332.64
105.0	330.52	110.0	328.28	115.0	326.43
120.0	325.59	125.0	326.42	130.0	329.62
135.0	335.79	140.0	345.34	145.0	358.46
150.0	375.03	155.0	394.69	160.0	416.83
165.0	440.74	170.0	465.63	175.0	490.72
180.0	515.29	185.0	538.68	190.0	560.38
195.0	579.97	200.0	597.20	205.0	611.91
210.0	624.08	215.0	633.81	220.0	641.27
225.0	646.71	230.0	650.42	235.0	652.72
240.0	653.96	245.0	654.43	250.0	654.43
255.0	654.20	260.0	653.94	265.0	653.78
270.0	653.78	275.0	653.94	280.0	654.20
285.0	654.43	290.0	654.43	295.0	653.96
300.0	652.72	305.0	650.42	310.0	646.71
315.0	641.27	320.0	633.81	325.0	624.08
330.0	611.91	335.0	597.20	340.0	579.97
345.0	560.38	350.0	538.68	355.0	515.29

KABC Proposed Nighttime AM Directional Pattern



Erss = 828.51 mV/m@1km
 Theo RMS: 829.534 mV/m@1km
 Std RMS: 871.441 mV/m@1km
 Q: 26.077 mV/m@1km

Standard Pattern at Theta = 50.00 Degrees

— Pattern (mV/m @ 1km)
 — Pattern X10

#	Field Ratio	Phase (deg)	Spacing (deg)	Orient (deg)	Height (deg)	Ref Switch	TL Switch	A (deg)	B (deg)	C (deg)	D (deg)
1	0.336	95.0	0.0	0.0	105.8	0	0	0.0	0.0	0.0	0.0
2	1.000	0.0	143.1	267.5	105.8	0	0	0.0	0.0	0.0	0.0

Call: KABC
 Freq: 790 kHz
 LOS ANGELES, CA, US
 Hours: N
 Lat: 34-01-10 N
 Long: 118-20-44 W
 Power: 6.8 kW
 Theo RMS: 829.53 mV/m@1km
 @ 6.8 kW

EXHIBIT #1N11a

MINOR CHANGE APPLICATION
AMENDMENT TO BP-20151013ABI
RADIO LICENSE HOLDINGS, LLC
KABC AM RADIO STATION
790 kHz - 6.8/6.6 kW - DAN
LOS ANGELES, CALIFORNIA
November 2015

EXHIBIT #1N11b

KABC - 790 kHz - LOS ANGELES, CA, US - N

North Latitude: 34° 01' 10"

West Longitude: 118° 20' 44"

Power: 6.8 kW

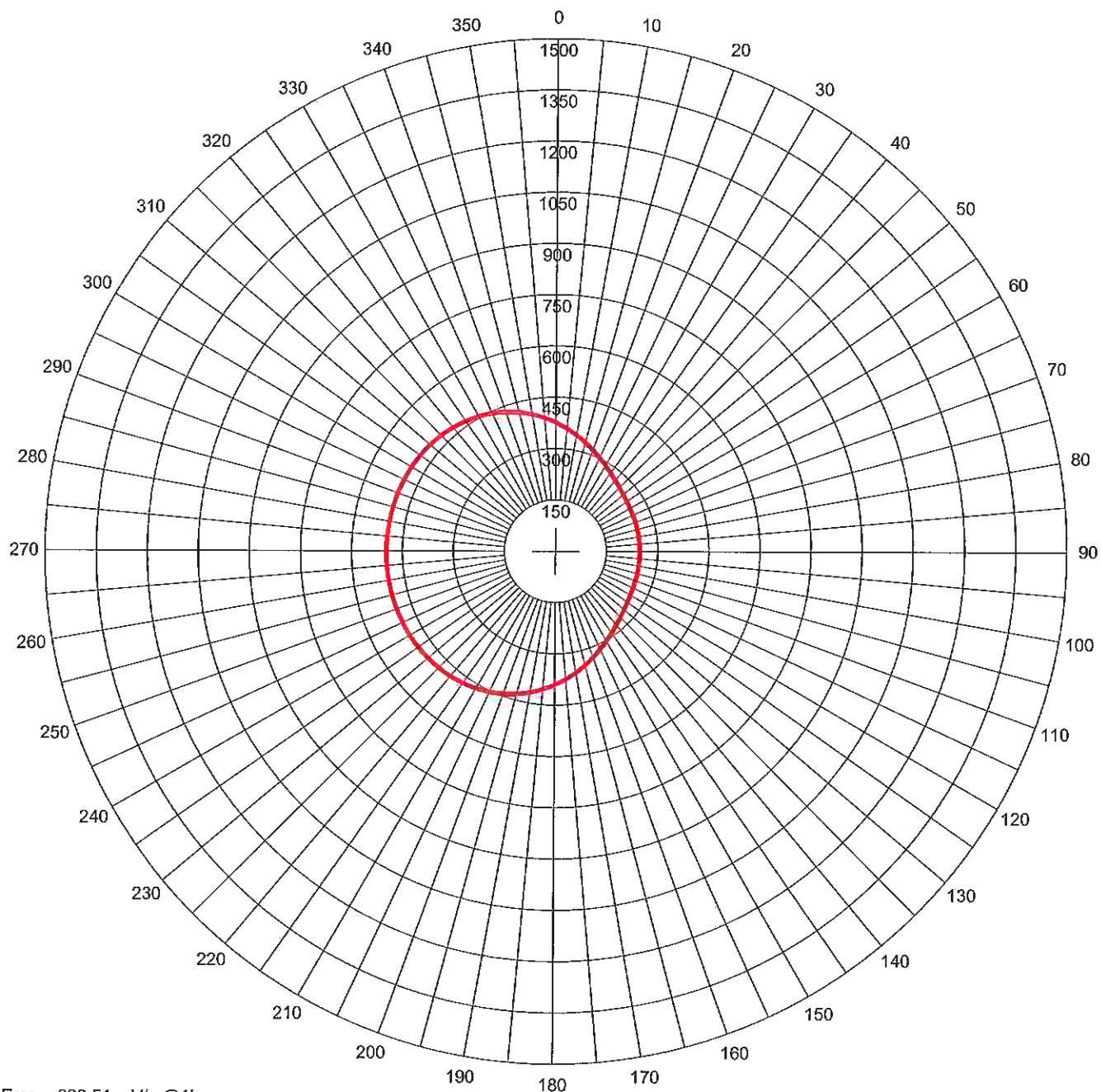
Theo RMS: 829.53 mV/m @ 1km @ 6.8 kW

#	Field Ratio	Phase Spacing (deg)	Orient (deg)	Height (deg)	Ref Swch	TL Swch	A (deg)	B (deg)	C (deg)	D (deg)
1	0.336	95.0	0.0	0.0	105.8	0	0	0.0	0.0	0.0
2	1.000	0.0	143.1	267.5	105.8	0	0	0.0	0.0	0.0

Standard Pattern
Calculated at 50.0 Degrees Elevation

Azimuth (Deg)	Field (mV/m @1km)	Azimuth (Deg)	Field (mV/m @1km)	Azimuth (Deg)	Field (mV/m @1km)
0.0	433.34	5.0	413.27	10.0	393.31
15.0	374.00	20.0	355.86	25.0	339.40
30.0	325.02	35.0	313.01	40.0	303.49
45.0	296.42	50.0	291.60	55.0	288.67
60.0	287.24	65.0	286.85	70.0	287.10
75.0	287.62	80.0	288.12	85.0	288.42
90.0	288.42	95.0	288.12	100.0	287.62
105.0	287.10	110.0	286.85	115.0	287.24
120.0	288.67	125.0	291.60	130.0	296.42
135.0	303.49	140.0	313.01	145.0	325.02
150.0	339.40	155.0	355.86	160.0	374.00
165.0	393.31	170.0	413.27	175.0	433.34
180.0	453.02	185.0	471.85	190.0	489.46
195.0	505.55	200.0	519.92	205.0	532.44
210.0	543.09	215.0	551.91	220.0	558.99
225.0	564.51	230.0	568.64	235.0	571.62
240.0	573.65	245.0	574.96	250.0	575.74
255.0	576.17	260.0	576.38	265.0	576.46
270.0	576.46	275.0	576.38	280.0	576.17
285.0	575.74	290.0	574.96	295.0	573.65
300.0	571.62	305.0	568.64	310.0	564.51
315.0	558.99	320.0	551.91	325.0	543.09
330.0	532.44	335.0	519.92	340.0	505.55
345.0	489.46	350.0	471.85	355.0	453.02

KABC Proposed Nighttime AM Directional Pattern



Erss = 828.51 mV/m@1km
 Theo RMS: 829.534 mV/m@1km
 Std RMS: 871.441 mV/m@1km
 Q: 26.077 mV/m@1km

Standard Pattern at Theta = 55.00 Degrees

— Pattern (mV/m @ 1km)
 — Pattern X10

#	Field Ratio	Phase (deg)	Spacing (deg)	Orient (deg)	Height (deg)	Ref Switch	TL Switch	A (deg)	B (deg)	C (deg)	D (deg)
1	0.336	95.0	0.0	0.0	105.8	0	0	0.0	0.0	0.0	0.0
2	1.000	0.0	143.1	267.5	105.8	0	0	0.0	0.0	0.0	0.0

Call: KABC
 Freq: 790 kHz
 LOS ANGELES, CA, US
 Hours: N
 Lat: 34-01-10 N
 Long: 118-20-44 W
 Power: 6.8 kW
 Theo RMS: 829.53 mV/m@1km
 @ 6.8 kW

EXHIBIT #1N12a

MINOR CHANGE APPLICATION
AMENDMENT TO BP-20151013ABI
RADIO LICENSE HOLDINGS, LLC
KABC AM RADIO STATION
790 kHz - 6.8/6.6 kW - DAN
LOS ANGELES, CALIFORNIA
November 2015

EXHIBIT #1N12b

KABC - 790 kHz - LOS ANGELES, CA, US - N

North Latitude: 34° 01' 10"

West Longitude: 118° 20' 44"

Power: 6.8 kW

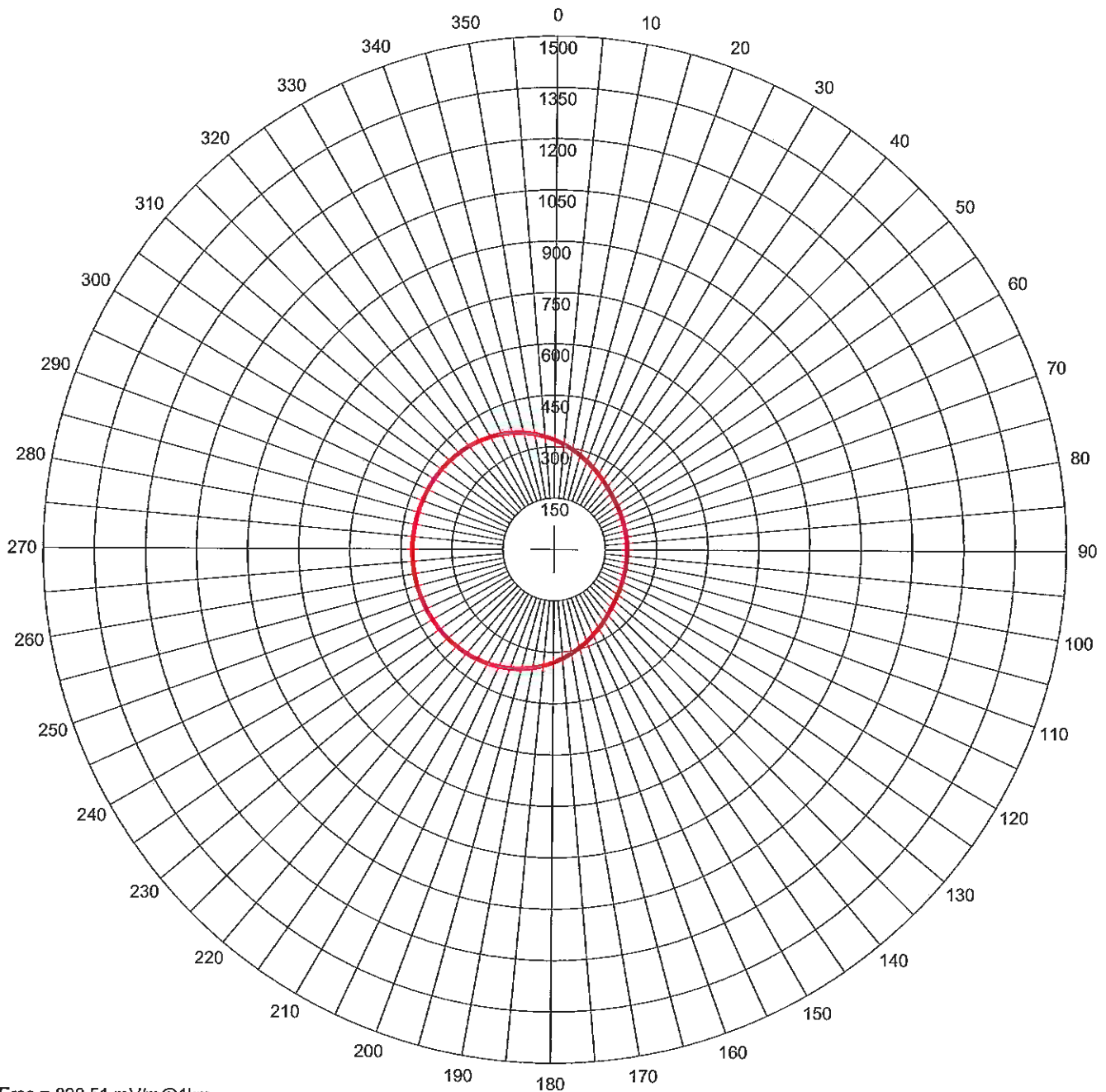
Theo RMS: 829.53 mV/m @ 1km @ 6.8 kW

#	Field Ratio	Phase (deg)	Spacing (deg)	Orient (deg)	Height (deg)	Ref Swch	TL Swch	A (deg)	B (deg)	C (deg)	D (deg)
1	0.336	95.0	0.0	0.0	105.8	0	0	0.0	0.0	0.0	0.0
2	1.000	0.0	143.1	267.5	105.8	0	0	0.0	0.0	0.0	0.0

Standard Pattern
Calculated at 55.0 Degrees Elevation

Azimuth (Deg)	Field (mV/m @1km)	Azimuth (Deg)	Field (mV/m @1km)	Azimuth (Deg)	Field (mV/m @1km)
0.0	375.95	5.0	360.47	10.0	345.05
15.0	330.03	20.0	315.76	25.0	302.55
30.0	290.68	35.0	280.36	40.0	271.68
45.0	264.67	50.0	259.25	55.0	255.25
60.0	252.46	65.0	250.64	70.0	249.54
75.0	248.92	80.0	248.62	85.0	248.50
90.0	248.50	95.0	248.62	100.0	248.92
105.0	249.54	110.0	250.64	115.0	252.46
120.0	255.25	125.0	259.25	130.0	264.67
135.0	271.68	140.0	280.36	145.0	290.68
150.0	302.55	155.0	315.76	160.0	330.03
165.0	345.05	170.0	360.47	175.0	375.95
180.0	391.14	185.0	405.76	190.0	419.54
195.0	432.28	200.0	443.83	205.0	454.10
210.0	463.04	215.0	470.67	220.0	477.03
225.0	482.23	230.0	486.36	235.0	489.58
240.0	492.00	245.0	493.77	250.0	495.02
255.0	495.85	260.0	496.36	265.0	496.59
270.0	496.59	275.0	496.36	280.0	495.85
285.0	495.02	290.0	493.77	295.0	492.00
300.0	489.58	305.0	486.36	310.0	482.23
315.0	477.03	320.0	470.67	325.0	463.04
330.0	454.10	335.0	443.83	340.0	432.28
345.0	419.54	350.0	405.76	355.0	391.14

KABC Proposed Nighttime AM Directional Pattern



Erss = 828.51 mV/m@1km
 Theo RMS: 829.534 mV/m@1km
 Std RMS: 871.441 mV/m@1km
 Q: 26.077 mV/m@1km

Standard Pattern at Theta = 60.00 Degrees

— Pattern (mV/m @ 1km)
 — Pattern X10

#	Field Ratio	Phase (deg)	Spacing (deg)	Orient (deg)	Height (deg)	Ref Switch	TL Switch	A (deg)	B (deg)	C (deg)	D (deg)
1	0.336	95.0	0.0	0.0	105.8	0	0	0.0	0.0	0.0	0.0
2	1.000	0.0	143.1	267.5	105.8	0	0	0.0	0.0	0.0	0.0

Call: KABC
 Freq: 790 kHz
 LOS ANGELES, CA, US
 Hours: N
 Lat: 34-01-10 N
 Lng: 118-20-44 W
 Power: 6.8 kW
 Theo RMS: 829.53 mV/m@1km
 @ 6.8 kW

EXHIBIT #1N13a

MINOR CHANGE APPLICATION
AMENDMENT TO BP-20151013ABI
RADIO LICENSE HOLDINGS, LLC
KABC AM RADIO STATION
790 kHz - 6.8/6.6 kW - DAN
LOS ANGELES, CALIFORNIA
November 2015

EXHIBIT #1N13b

KABC - 790 kHz - LOS ANGELES, CA, US - N
 North Latitude: 34° 01' 10" West Longitude: 118° 20' 44"
 Power: 6.8 kW Theo RMS: 829.53 mV/m @ 1km @ 6.8 kW

#	Field Ratio	Phase (deg)	Spacing (deg)	Orient (deg)	Height (deg)	Ref Switch	TL Switch	A (deg)	B (deg)	C (deg)	D (deg)
1	0.336	95.0	0.0	0.0	105.8	0	0	0.0	0.0	0.0	0.0
2	1.000	0.0	143.1	267.5	105.8	0	0	0.0	0.0	0.0	0.0

Standard Pattern
 Calculated at 60.0 Degrees Elevation

Azimuth (Deg)	Field (mV/m @1km)	Azimuth (Deg)	Field (mV/m @1km)	Azimuth (Deg)	Field (mV/m @1km)
0.0	319.19	5.0	307.78	10.0	296.41
15.0	285.27	20.0	274.57	25.0	264.52
30.0	255.29	35.0	247.00	40.0	239.75
45.0	233.56	50.0	228.43	55.0	224.30
60.0	221.08	65.0	218.65	70.0	216.89
75.0	215.69	80.0	214.94	85.0	214.59
90.0	214.59	95.0	214.94	100.0	215.69
105.0	216.89	110.0	218.65	115.0	221.08
120.0	224.30	125.0	228.43	130.0	233.56
135.0	239.75	140.0	247.00	145.0	255.29
150.0	264.52	155.0	274.57	160.0	285.27
165.0	296.41	170.0	307.78	175.0	319.19
180.0	330.40	185.0	341.25	190.0	351.56
195.0	361.20	200.0	370.07	205.0	378.09
210.0	385.22	215.0	391.46	220.0	396.83
225.0	401.37	230.0	405.14	235.0	408.21
240.0	410.65	245.0	412.54	250.0	413.95
255.0	414.95	260.0	415.59	265.0	415.90
270.0	415.90	275.0	415.59	280.0	414.95
285.0	413.95	290.0	412.54	295.0	410.65
300.0	408.21	305.0	405.14	310.0	401.37
315.0	396.83	320.0	391.46	325.0	385.22
330.0	378.09	335.0	370.07	340.0	361.20
345.0	351.56	350.0	341.25	355.0	330.40