

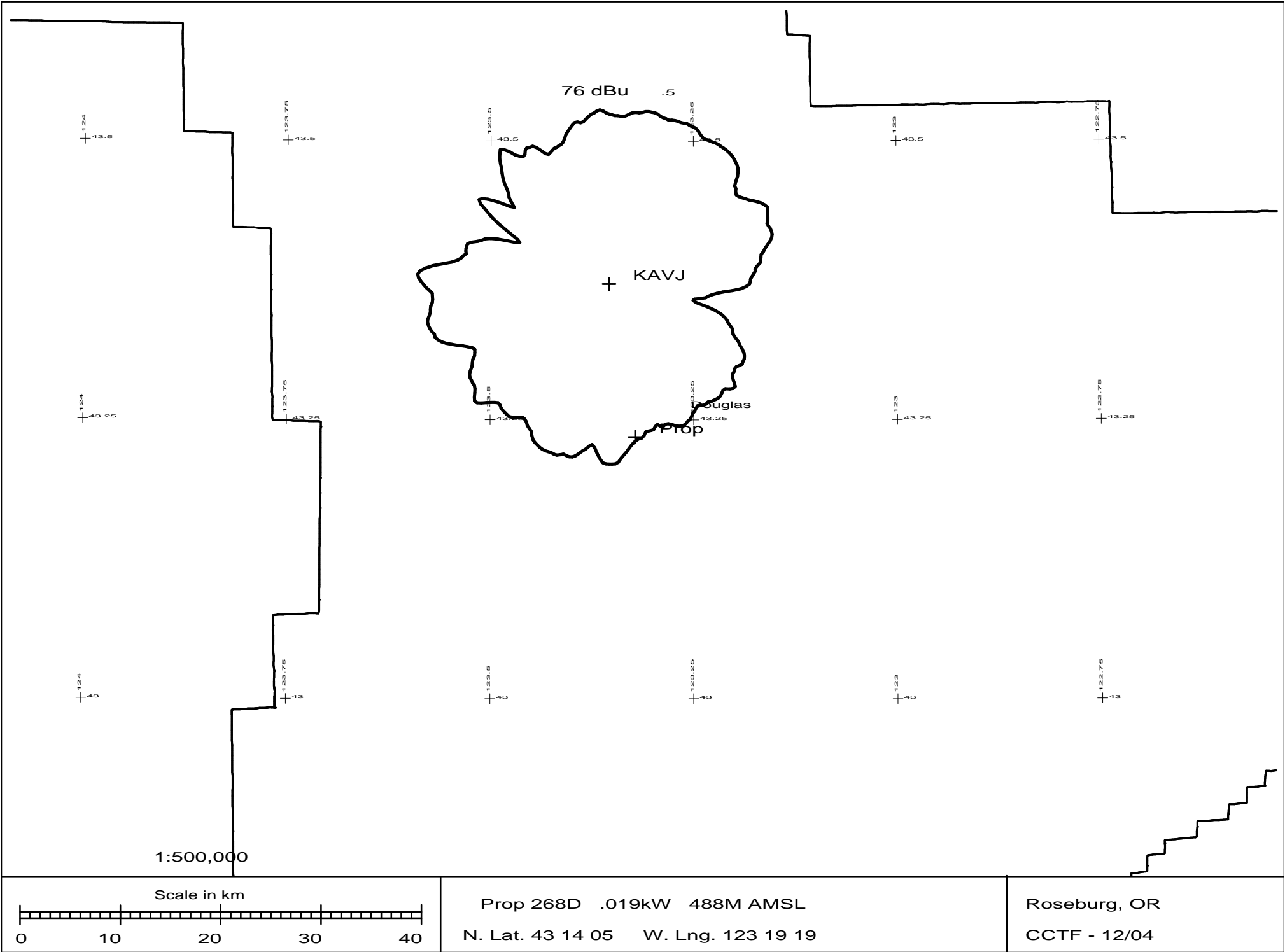
Page #1, Waiver Request of Section 74.1204

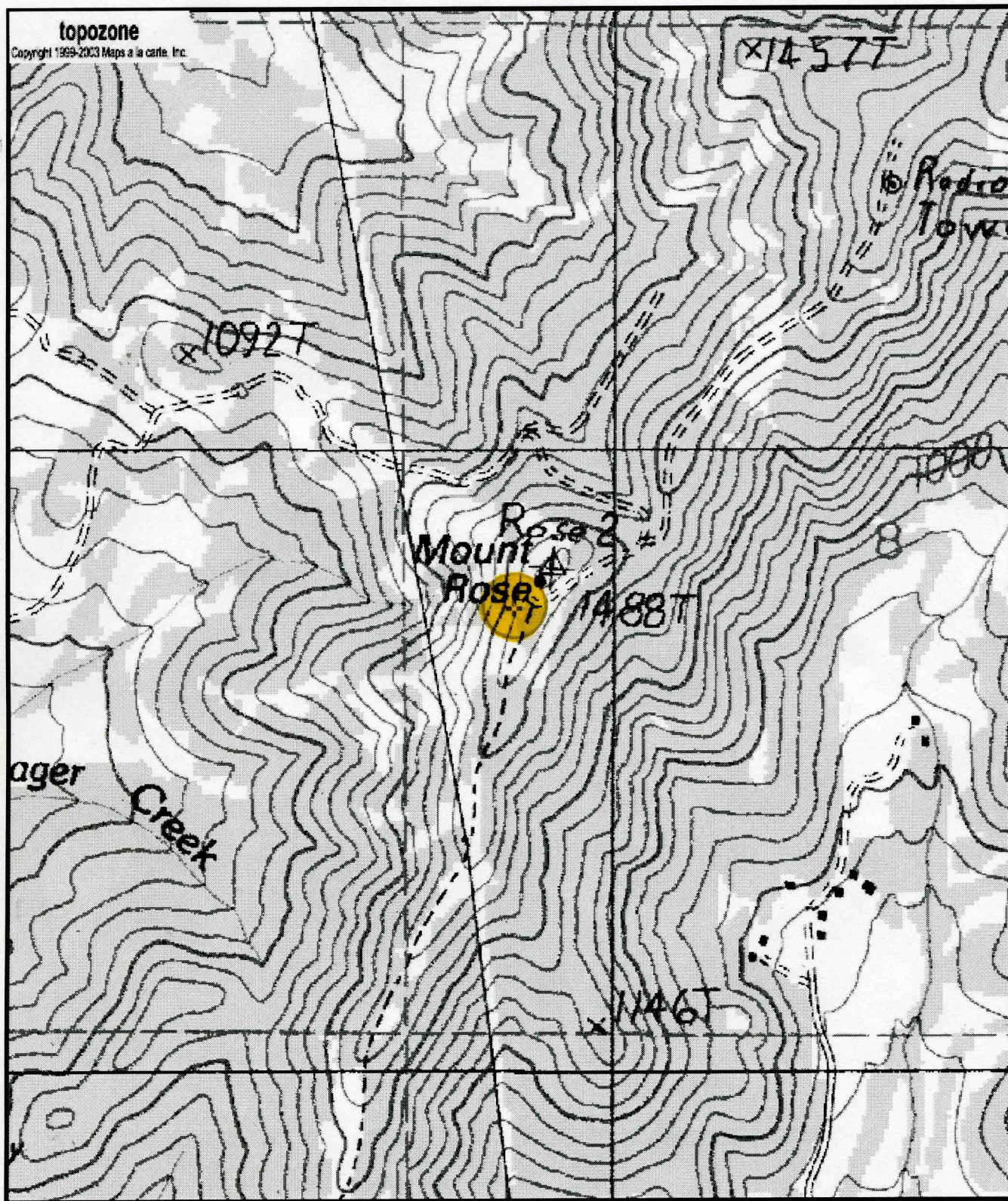
K214CM, Roseburg, OR 19 Watts ERP
Calvary Chapel of Twin Falls, Inc. 12/04

The proposed site is contained entirely inside the service contour of second-adjacent station KAVJ, Sutherlin, OR

KAVJ

The proposed site is contained entirely inside the service contour of second-adjacent Station KAVJ, Channel 266, Class C3, 3.6 kW, Sutherlin, OR. As shown by the map on **page #2** of this waiver request, the level of the second-adjacent station KAVJ arriving protected F(50,50) signal at the proposed transmitter site is less than 76-dBu. Using the Undesired-to-Desired method for calculating proposed interference (the basis of the FCC current contour overlap regulations and an acceptable method for the purposes of determining lack of interference for an FM Translator), the proposed interfering contour with respect to KAVJ is a little less than 116-dBu (free-space contour method employed). This means that the 116-dBu interfering signal would, in the worst case at the maximum radial, extend less than 49 meters, or .049 km, from the base of the tower. And because our transmit antenna will be located at 14 meters AGL, the interference contour would in reality even fall closer to the base of the tower, which is located on Rose Mt. There is no population within this .049 km interference area (See Topo Map, Roseburg East quadrangle) other than equipment buildings for the towers at this site. Calvary Chapel of Twin Falls, Inc. respectfully requests a waiver of the FM translator contour overlap regulations with respect to second-adjacent channel station KAVJ .





0 0.1 0.2 0.3 0.4 0.5 km
0 0.09 0.18 0.27 0.36 0.45 mi

Map center is 43° 14' 06"N, 123° 19' 20"W (NAD27)

Roseburg East quadrangle

Projection is UTM Zone 10 NAD83 Datum

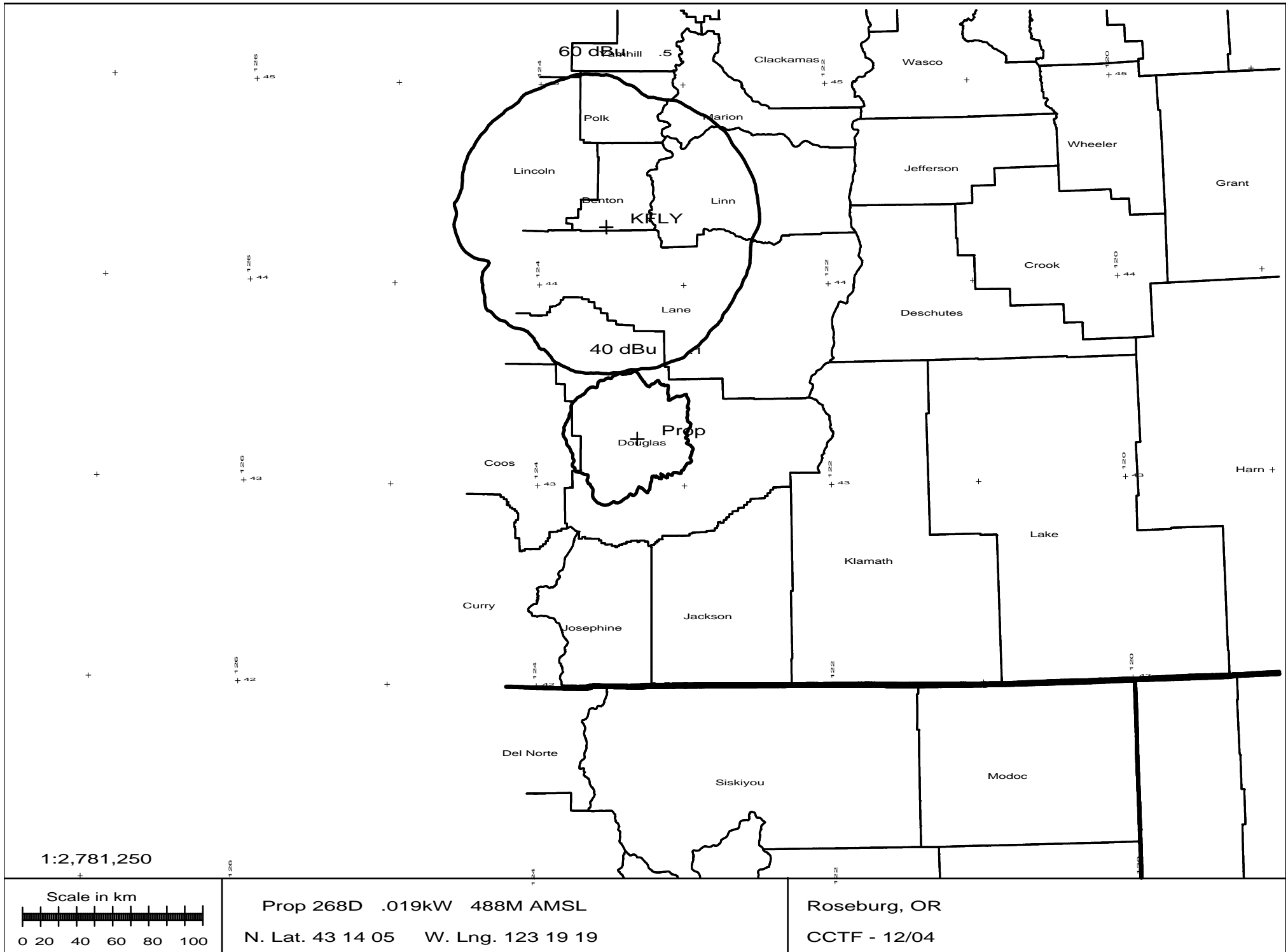


M=16.883
G=-0.222

TERRAIN AND CONTOUR DATA
K214CM, ROSEBURG, OR
CHANNEL 268
DEC 2004 / CALVARY CHAPEL OF TWIN FALLS, INC.
N. Lat. = 43 14 05 W. Lng. = 123 19 19
HAAT and Distance to Contour - FCC Method - 03 Arc Sec.

Azi.	AV EL	HAAT	ERP kW	dBk	Field	60-F5
000	230.0	258.0	0.0190	-17.21	1.000	11.02
030	265.7	222.3	0.0190	-17.21	1.000	10.25
060	279.5	208.5	0.0190	-17.21	1.000	9.93
090	339.3	148.7	0.0190	-17.21	1.000	8.31
120	308.8	179.2	0.0190	-17.21	1.000	9.21
150	367.7	120.3	0.0190	-17.21	1.000	7.46
180	333.6	154.4	0.0190	-17.21	1.000	8.49
210	160.2	327.8	0.0190	-17.21	1.000	12.40
240	226.9	261.1	0.0190	-17.21	1.000	11.09
270	184.8	303.2	0.0190	-17.21	1.000	11.94
300	167.9	320.1	0.0190	-17.21	1.000	12.25
330	218.2	269.8	0.0190	-17.21	1.000	11.28

Ave El= 256.89 M HAAT= 231.11 M AMSL= 488M



40 dBu

.1

Prop

Reference