

Redeemer Broadcasting, Inc., W214AH, Jefferson Heights, NY
BLFT 19900817TA, Facility ID 11067
July 2010 Minor Modification
Exhibit 13

Proposed Minor Modification

The proposed modification includes a change from CH 214 to CH 266. A waiver of Section 74.1233(a)(1) is hereby requested due to the displacement of W214AH from CH 214 by WGXC (CP), Acra, NY, which will also operate on CH 214. An interference study determined that it is not technically feasible to operate on a first, second, or third adjacent channel or i.f. channels, thus in order to continue to provide service to listeners this move to an alternate frequency is necessary and believed to be in the public interest to do so.

This modification also proposes an increase in the antenna height above ground to 90.3 meters, the radiation center above mean sea level to 194 meters, and the HAAT to 75 meters. There is no change in the site location or the ERP, thus the proposed 1 mV/m contour will overlap the existing 1 mV/m contour.

Redeemer Broadcasting, Inc., W214AH, Jefferson Heights, NY
BLFT 19900817TA, Facility ID 11067
July 2010 Minor Modification
Exhibit 13

Tabulation of HAAT / Distance to 60 dBu

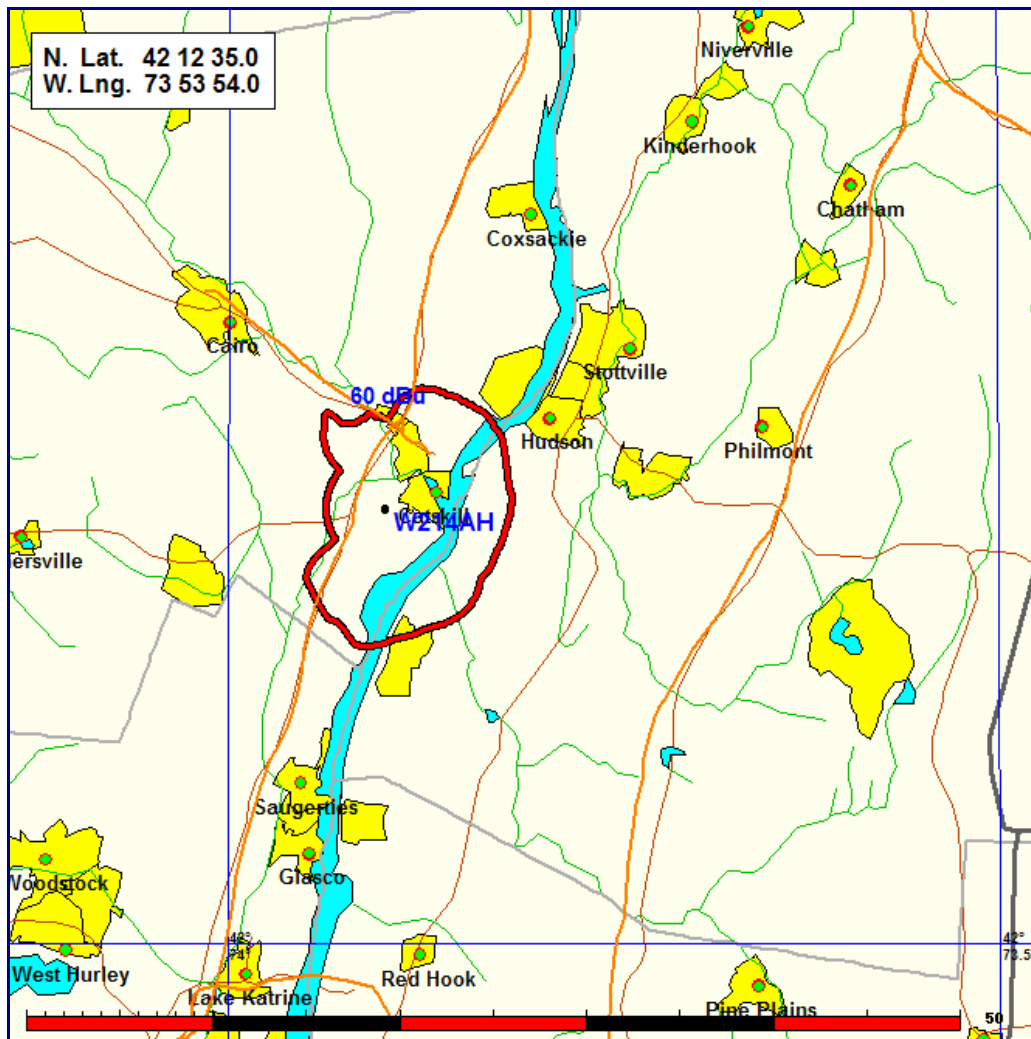
CH 266D - 101.1 MHz 0.010 kW ERP 75 M HAAT 194 M COR AMSL 42 12 35.0 / 73 53 54.0

Azi.	AV EL	HAAT	ERP kW	dBk	Field	60-F5
000	127.4	66.6	0.0100	-20.00	1.000	4.75
010	85.8	108.2	0.0100	-20.00	1.000	6.09
020	57.7	136.3	0.0100	-20.00	1.000	6.77
030	50.5	143.5	0.0100	-20.00	1.000	6.94
040	40.8	153.2	0.0100	-20.00	1.000	7.17
050	33.6	160.4	0.0100	-20.00	1.000	7.34
060	37.7	156.3	0.0100	-20.00	1.000	7.25
070	53.1	140.9	0.0100	-20.00	1.000	6.88
080	60.2	133.8	0.0100	-20.00	1.000	6.71
090	60.9	133.1	0.0100	-20.00	1.000	6.70
100	68.2	125.8	0.0100	-20.00	1.000	6.53
110	73.5	120.5	0.0100	-20.00	1.000	6.41
120	72.2	121.8	0.0100	-20.00	1.000	6.44
130	68.0	126.0	0.0100	-20.00	1.000	6.53
140	51.5	142.5	0.0100	-20.00	1.000	6.92
150	48.9	145.1	0.0100	-20.00	1.000	6.98
160	56.2	137.8	0.0100	-20.00	1.000	6.81
170	50.2	143.8	0.0100	-20.00	1.000	6.95
180	40.4	153.6	0.0100	-20.00	1.000	7.18
190	26.6	167.4	0.0100	-20.00	1.000	7.50
200	60.1	133.9	0.0100	-20.00	1.000	6.72
210	68.5	125.5	0.0100	-20.00	1.000	6.52
220	90.2	103.8	0.0100	-20.00	1.000	5.96
230	107.7	86.3	0.0100	-20.00	1.000	5.41
240	214.5	-20.5	0.0100	-20.00	1.000	3.15
250	302.7	-108.7	0.0100	-20.00	1.000	3.15
260	334.3	-140.3	0.0100	-20.00	1.000	3.15
270	432.7	-238.7	0.0100	-20.00	1.000	3.15
280	380.6	-186.6	0.0100	-20.00	1.000	3.15
290	266.7	-72.7	0.0100	-20.00	1.000	3.15
300	196.3	-2.3	0.0100	-20.00	1.000	3.15
310	162.4	31.6	0.0100	-20.00	1.000	3.23
320	116.6	77.4	0.0100	-20.00	1.000	5.12
330	97.2	96.8	0.0100	-20.00	1.000	5.75
340	127.5	66.5	0.0100	-20.00	1.000	4.75
350	118.0	76.0	0.0100	-20.00	1.000	5.07

Note: 12 highlighted azimuths determine HAAT of 75 meters.

Redeemer Broadcasting, Inc., W214AH, Jefferson Heights, NY
BLFT 19900817TA, Facility ID 11067
July 2010 Minor Modification
Exhibit 13

Proposed 60 dBu Contour



Redeemer Broadcasting, Inc., W214AH, Jefferson Heights, NY
BLFT 19900817TA, Facility ID 11067
July 2010 Minor Modification
Exhibit 13

Allocation Study

The below study demonstrates that the use of CH 266 will meet all lack of prohibited overlap requirements, with the exception that the proposed facility will be within the protected 54 dBu contour of WPDH, CH 268B, Poughkeepsie, NY. This Exhibit contains a showing on page demonstrating compliance with Section 74.1204(d) in that there is no population within the interference contour of the proposed facility.

CH 266D - 101.1 MHz		0.010 kW ERP		75 M HAAT		194 M COR AMSL		42 12 35.0 / 73 53 54.0			
CH CITY	CALL	TYPE STATE	ANT STATE	AZI. <--	DIST FILE #	LAT. LNG.	Pwr (kW) HAAT (M)	INT (km) COR (M)	PRO (km) LICENSEE	*IN* (Overlap in km)	*OUT*
263D Colonie	633342	APP NY	C NY	1.3 181.3	58.0 BNPFT20030317LOM	42 43 54.0 73 52 56.0	0.130	0.8 174	11.4 Galaxy Communications, L.p	52.4	46.4
263B New Britain	WRCH	LIC CT	CX CT	122.2 302.9	104.7 BMLH20090430AAN	41 42 13.0 72 49 57.0	7.500 381	4.5 475	60.4 Cbs Radio Stations Inc.	93.9	43.8
264B Peekskill	WHUD	LIC NY	CY NY	179.8 359.8	96.8 BMLH19880126KC	41 20 18.0 73 53 41.0	50.000 152	4.6 317	54.6 6 Johnson Road Licenses, I	85.0	41.8
265A Albany	WKLI-FM	LIC NY	CN NY	1.3 181.3	58.0 BMLH19910301KC	42 43 54.0 73 52 56.0	6.000 91	49.3 202	32.4 6 Johnson Road Licenses, I	3.9	18.9
265D Lee	633973	APP MA	C MA	80.3 260.7	57.0 BNPFT20030312ASV	42 17 39.0 73 13 03.0	0.013	10.3 441	7.3 University Of Massachusett	39.9	40.2
265D Great Barrington	634848	APP MA	C MA	89.1 269.5	45.7 BNPFT20030312ARF	42 12 53.0 73 20 43.0	0.250	10.1 246	7.1 University Of Massachusett	28.8	29.1
266A Fort Plain	WBUG-FM	LIC NY	CN NY	316.0 135.4	104.1 BLH19910312KD	42 52 44.0 74 47 07.0	1.250 219	76.7 584	26.1 Roser Communications Netwo	22.7	63.4
266B New York	WCBS-FM	LIC NY	CX NY	182.6 2.5	162.5 BLH20060301ABK	40 44 54.0 73 59 10.0	6.700 408	125.8 422	65.2 Cbs Radio East Inc.	29.4	62.7
267B Hamden	WKCI-FM	LIC CT	NCX CT	137.2 317.9	117.0 BLH20021011ABD	41 26 01.0 72 56 45.0	12.000 279	67.0 379	57.8 Cc Licenses, Llc	43.1	45.6
267A Stillwater	WQAR	LIC NY	CN NY	11.1 191.2	90.8 BLH19950309KA	43 00 42.0 73 41 01.0	2.900 143	42.1 235	27.7 Anastos Media Group, Inc.	42.5	54.4
268B Poughkeepsie	WPDH	LIC NY	CN NY	188.5 8.4	55.1 BLH19861110KF	41 43 09.0 73 59 47.0	4.400 469	4.1 580	67.2 Cumulus Licensing Llc	43.5	-12.5*<
269A Pittsfield	WBRK-FM	LIC MA	CX MA	60.1 240.5	59.7 BMLH20080131AKI	42 28 31.0 73 16 07.0	3.000 44	1.6 443	14.2 Wbrk, Inc.	50.8	45.3

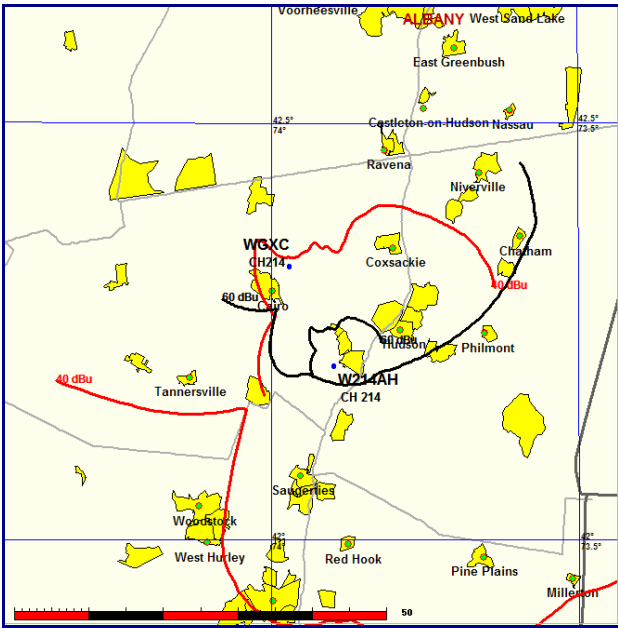
Terrain database is NGDC 30 SEC Distance + R = 73.215 or FCC spacings in KM, Distance + M = Margin in KM
Contour distances are on direct line to and from reference station. Reference Zone = . With 3rd Adj Channels.
Ant Column: (D= DA Standard, Z= DA 73.215, N= Not DA 73.215, _= Omni), Polarization (C,H,V,E), Beamtilt(Y,N,X)
***affixed to 'IN' or 'OUT' values = site inside protected contour.

Redeemer Broadcasting, Inc., W214AH, Jefferson Heights, NY
BLFT 19900817TA, Facility ID 11067
July 2010 Minor Modification
Exhibit 13

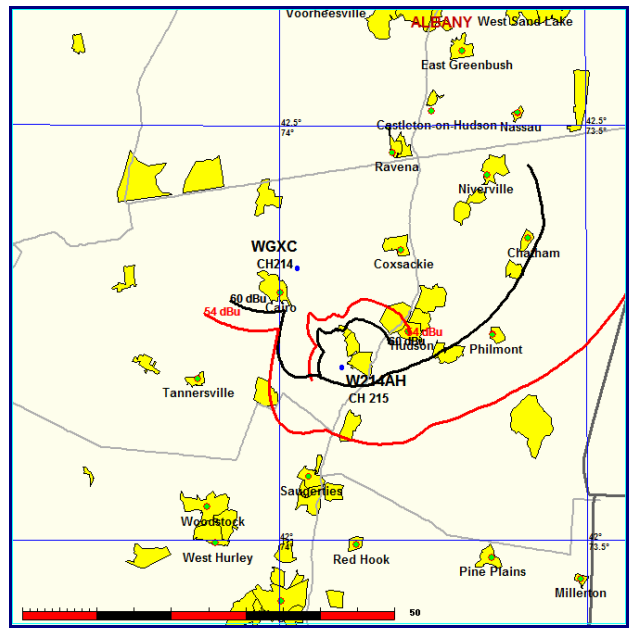
Allocation Study

W214AH is precluded from continuing operation on CH 214 due to the new full service Construction Permit of WGXC, Acra, NY. WGXC also precludes W214AH from being able to operate on first adjacent CH 213 or CH 215.

W214AH, CH 214, & WGXC, CH 214



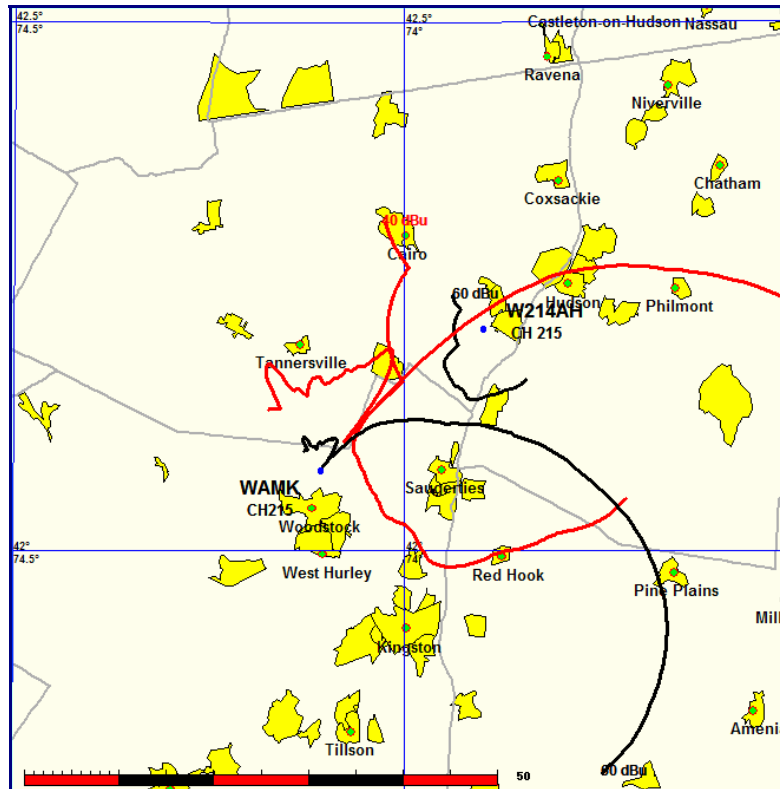
W214AH, CH 213 or 215, & WGXC, CH 214



Redeemer Broadcasting, Inc., W214AH, Jefferson Heights, NY
BLFT 19900817TA, Facility ID 11067
July 2010 Minor Modification
Exhibit 13

Allocation Study

In addition to not being able to operate on CH 215 due to interference that would be caused to WGXC, Acra, NY, below is a map showing that W214AH is also not able to move to first adjacent CH 215 in that it would have prohibited overlap with WAMK, CH 215, Kingston, NY.

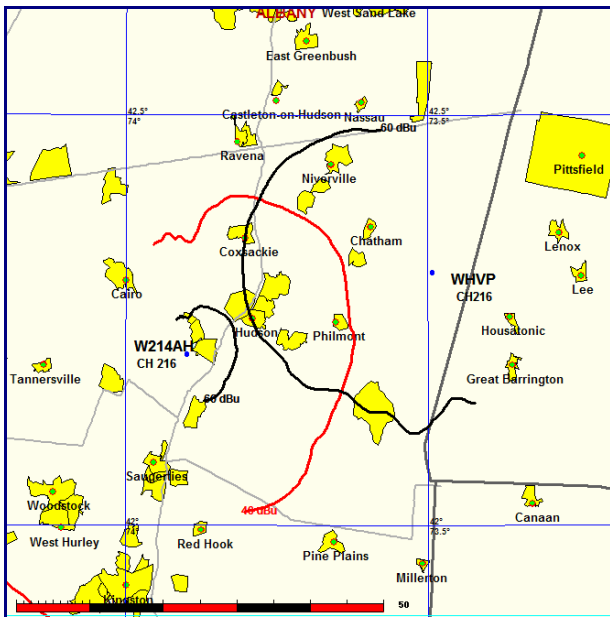


Redeemer Broadcasting, Inc., W214AH, Jefferson Heights, NY
BLFT 19900817TA, Facility ID 11067
July 2010 Minor Modification
Exhibit 13

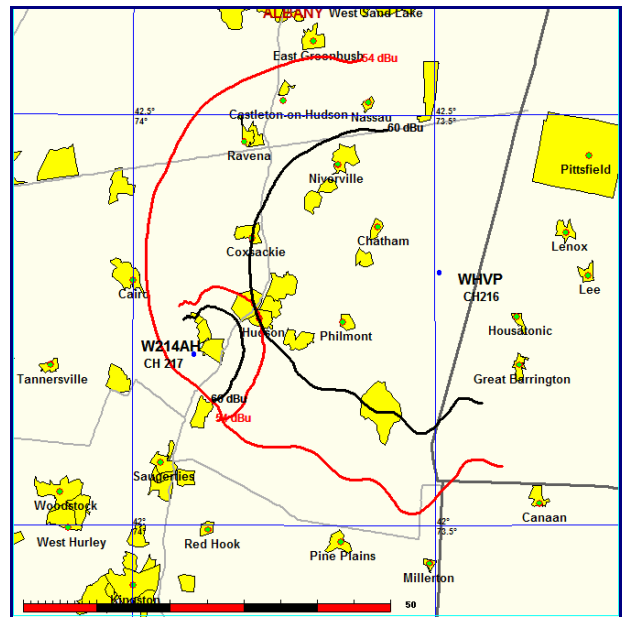
Allocation Study

Below is a map demonstrating that W214AH is not able to operate on second adjacent CH 216 in that it would result in prohibited overlap with WHVP, CH 216, Hudson, NY. WHVP also precludes W214AH from operating on third adjacent CH 217. Although the interference contour of W214AH could be adjusted to clear WHVP as a first adjacent facility, due to the proximity of the two facilities actual interference would occur.

W214AH, CH 216, & WHVP, CH 216



W214AH, CH 217, & WHVP, CH 216

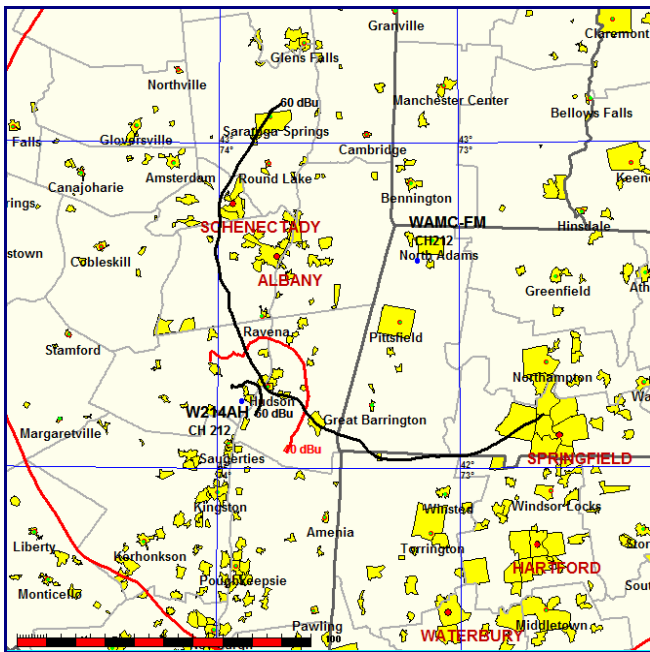


Redeemer Broadcasting, Inc., W214AH, Jefferson Heights, NY
BLFT 19900817TA, Facility ID 11067
July 2010 Minor Modification
Exhibit 13

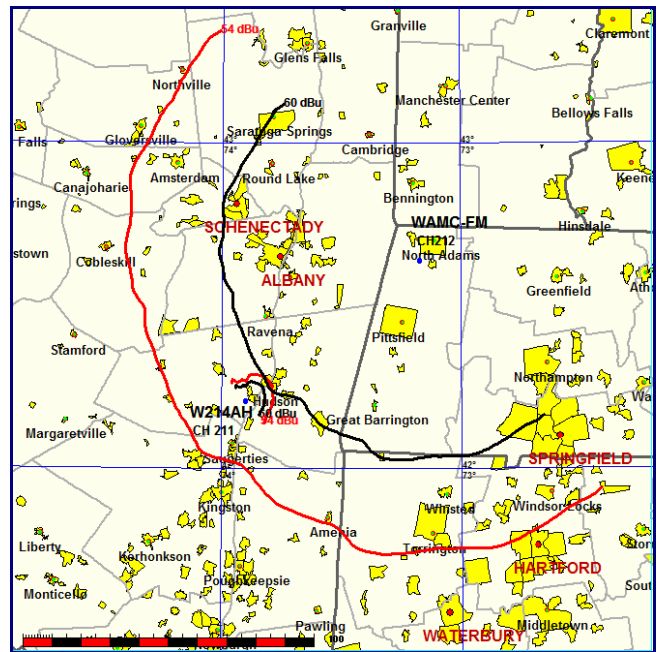
Allocation Study

Below is a map demonstrating that W214AH is not able to operate on second adjacent CH 212 in that it would result in prohibited overlap with WAMC-FM, CH 212, Albany, NY. WAMC-FM also precludes W214AH from operating on third adjacent CH 211. Although the interference contour of W214AH could be adjusted to clear WAMC-FM as a first adjacent facility, due to the proximity of the two facilities actual interference would occur.

W214AH, CH 212, & WAMC-FM, CH 212



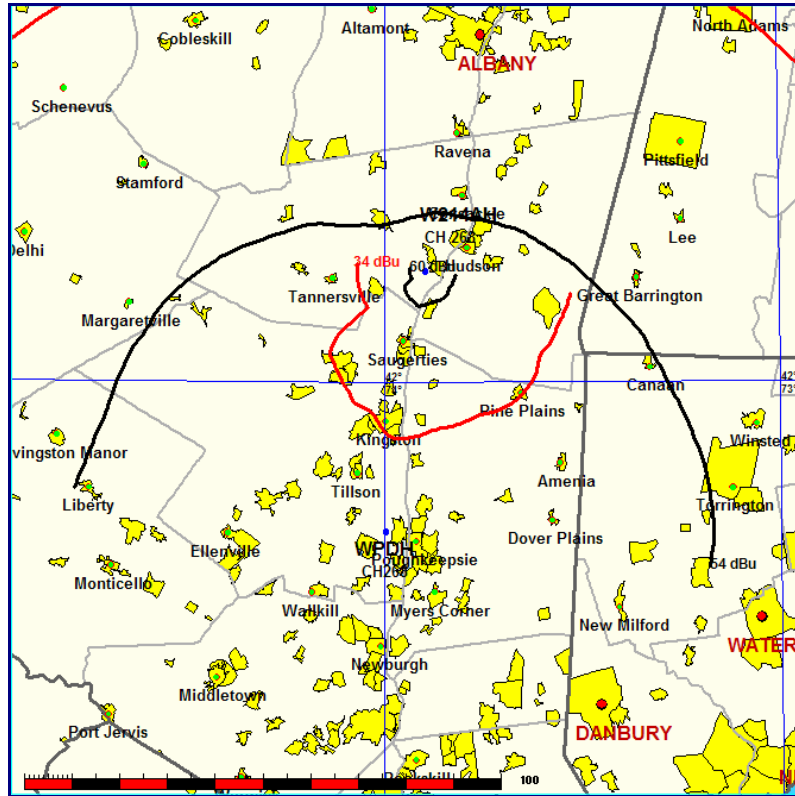
W214AH, CH 211, & WAMC-FM, CH 212



Redeemer Broadcasting, Inc., W214AH, Jefferson Heights, NY
BLFT 19900817TA, Facility ID 11067
July 2010 Minor Modification
Exhibit 13

Allocation Study

Below is a map demonstrating that W214AH is not able to operate on i.f. channels 267 or 268 in that it would result in prohibited overlap with WPDH, CH 268, Poughkeepsie, NY.



Redeemer Broadcasting, Inc., W214AH, Jefferson Heights, NY
BLFT 19900817TA, Facility ID 11067
July 2010 Minor Modification
Exhibit 13

Allocation Study

The proposed change from CH 214 to CH 266 will result in the site being located within the 54 dBu protected contour of the following station:

WPDH LIC 268 B Dom - B Int, 4.400 kW 4
Poughkeepsie NY 580.0 M COR AMSL
Lat= 41 43 09.0, Lng= 73 59 47.0
Cumulus Licensing Llc
Fac ID# 71514 BLH19861110KF
Dist.=55.09 km, Azi=188.5°, Rev Azi=8.4°
Toward Ref: HAAT= 486.6M, 4.4 kW
Toward Ref: 54 dBu Protected= 67.2 km, Int= 4.11 km
Direct line Ref. Protected Contour = 7.5 km, Int= 0.44 km
Direct line Ref. HAAT= 166.9M, 0.01 kW

WPDH has a signal strength of 59 dBu at the FM Translator site, thus the corresponding interference contour of 99 dBu was used, which will be completely encompassed within the 54 dBu protected contour of WPDH. The distance to the 99 dBu interference contour is .25 km. The 99 dBu interference contour was overlayed onto a satellite map of the site, which shows no residential or business structures within the 99 dBu interference contour. A quarry is located to the west of the site which contains storage containers and trucks but no occupied structures. Census data (2000) also indicates that there is no population within the 99 dBu interference contour.

Based on the showing of the lack of population within the 99 dBu interference contour, it is presented that the proposed modification of W214AH complies with the criteria of Section 74.1204(d).

Allocation Study

Map of 99 dBu Interference Contour

