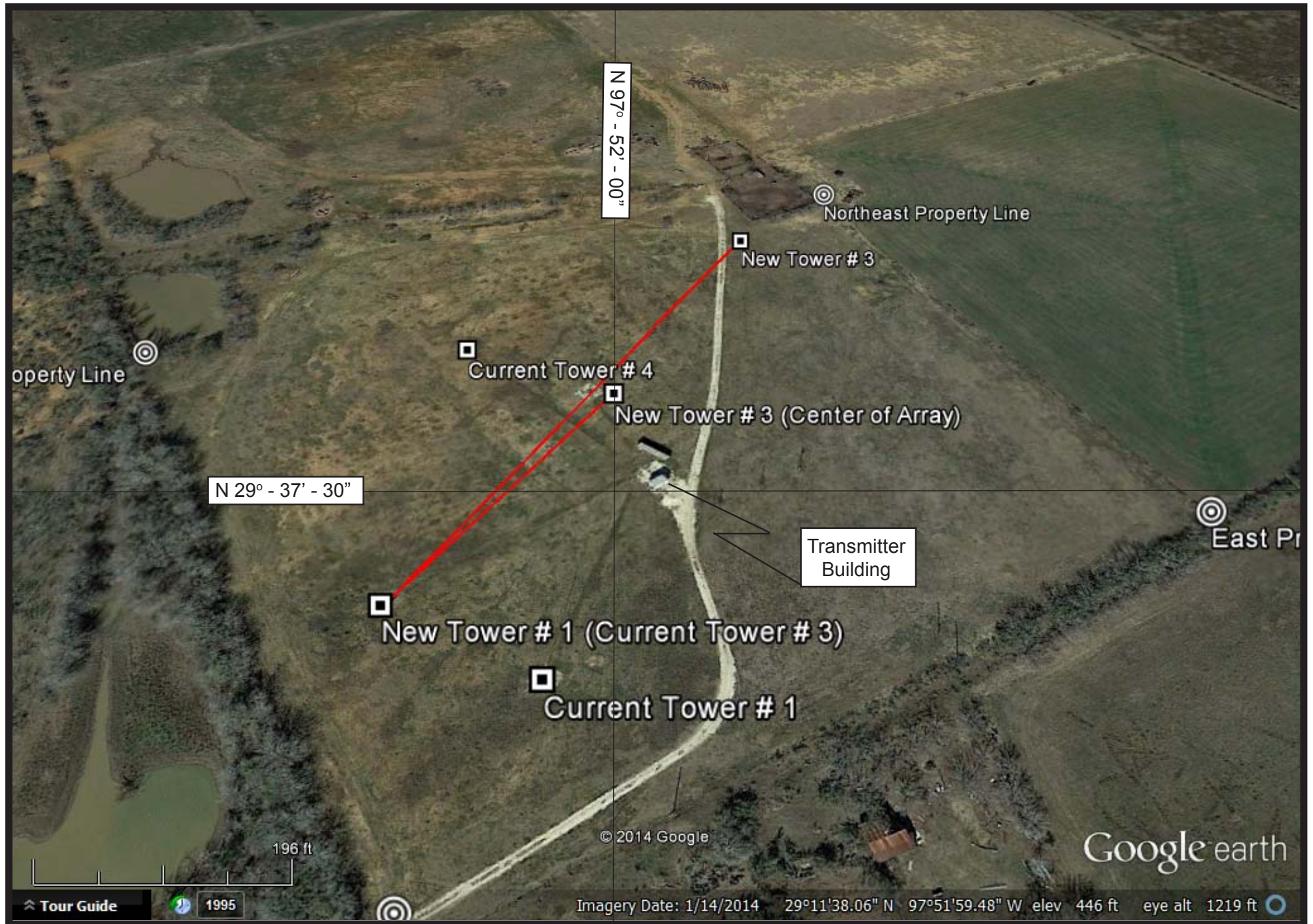
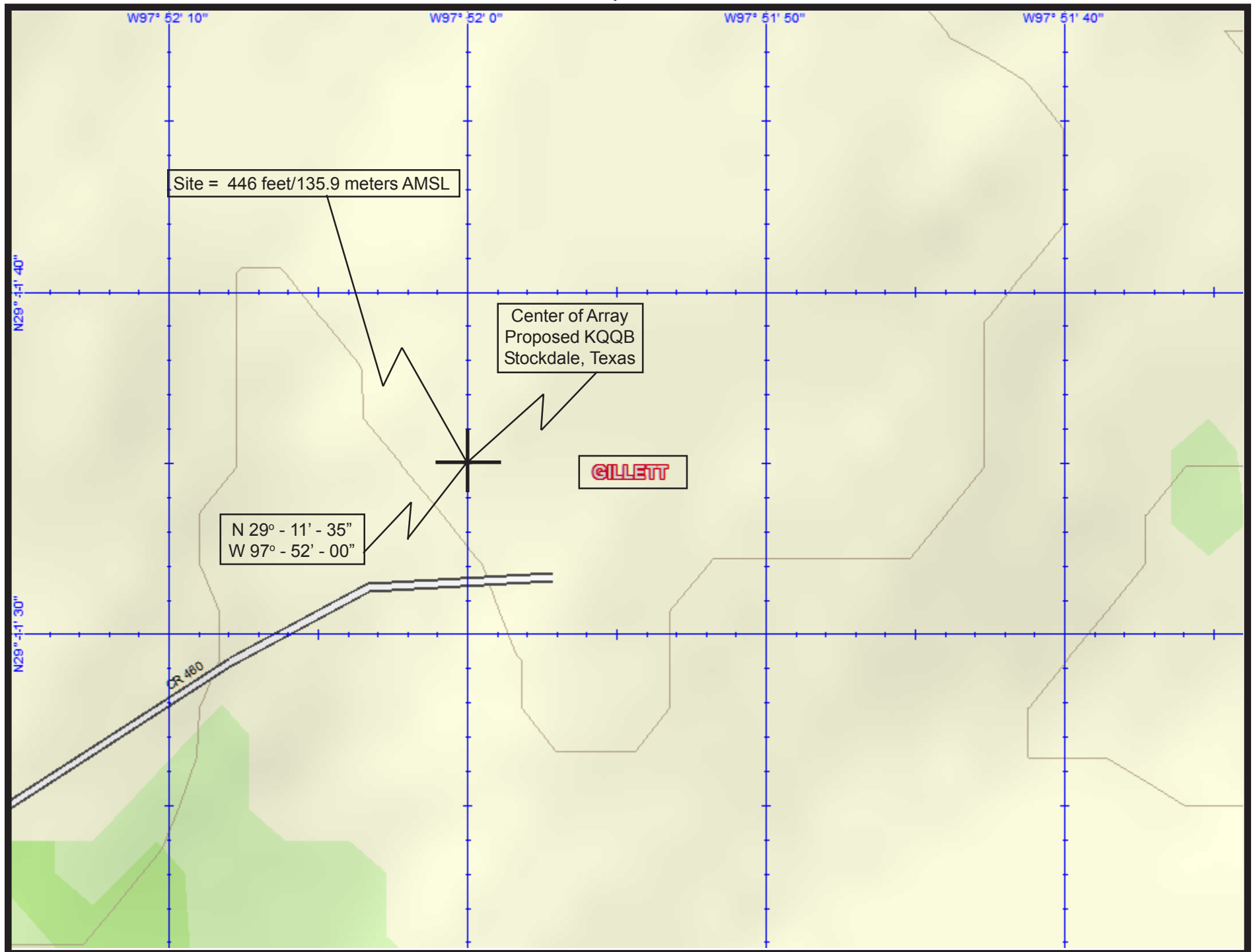


Aerial Map Indicating Currently Licensed Tower Placement and  
Proposed New Tower Placement for KQQB - Stockdale, Texas  
(As originally proposed 6-14)

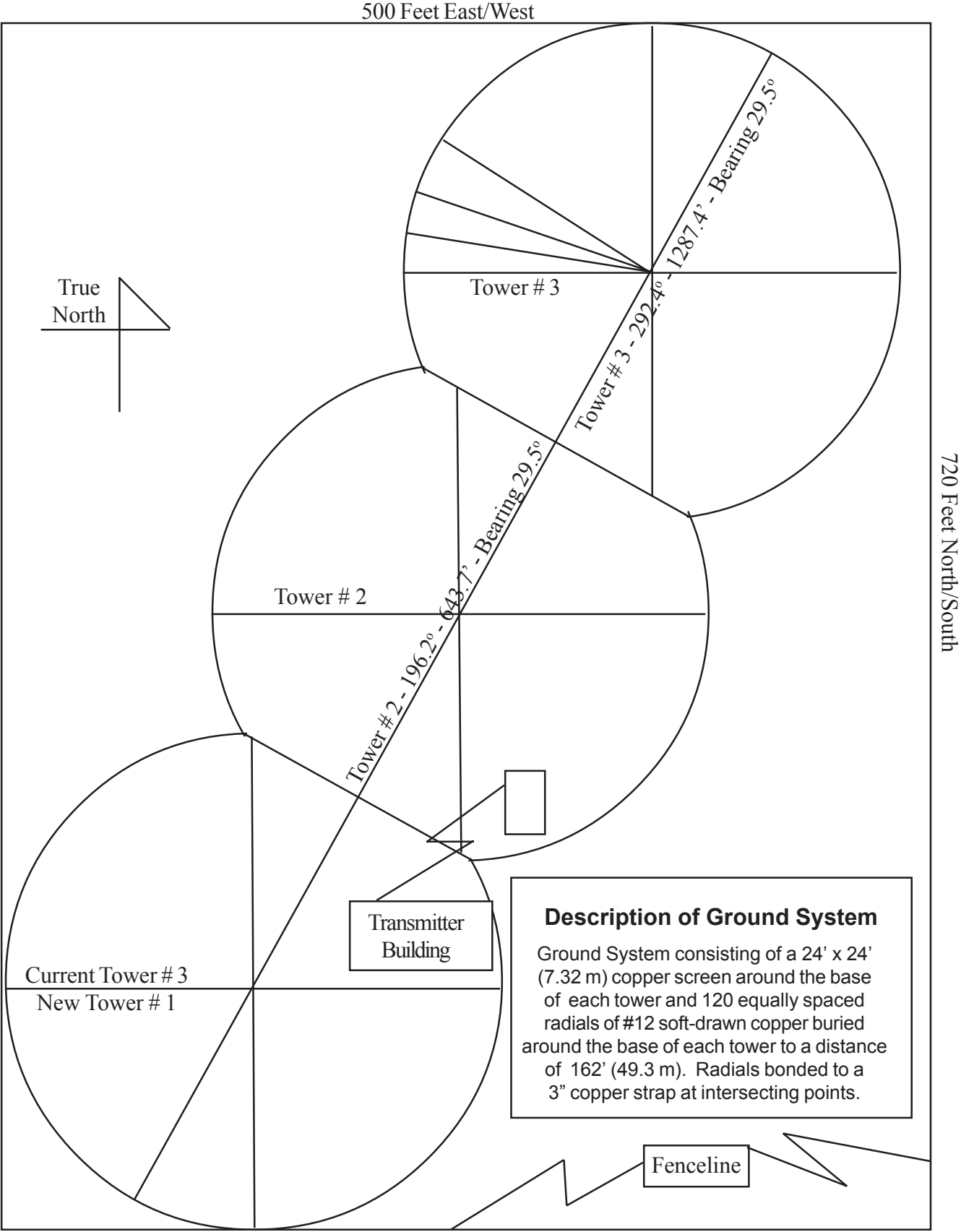


# Portion of USGS 7.5 Minute Series Map Entitled: "Gillett, Texas"

May, 2014



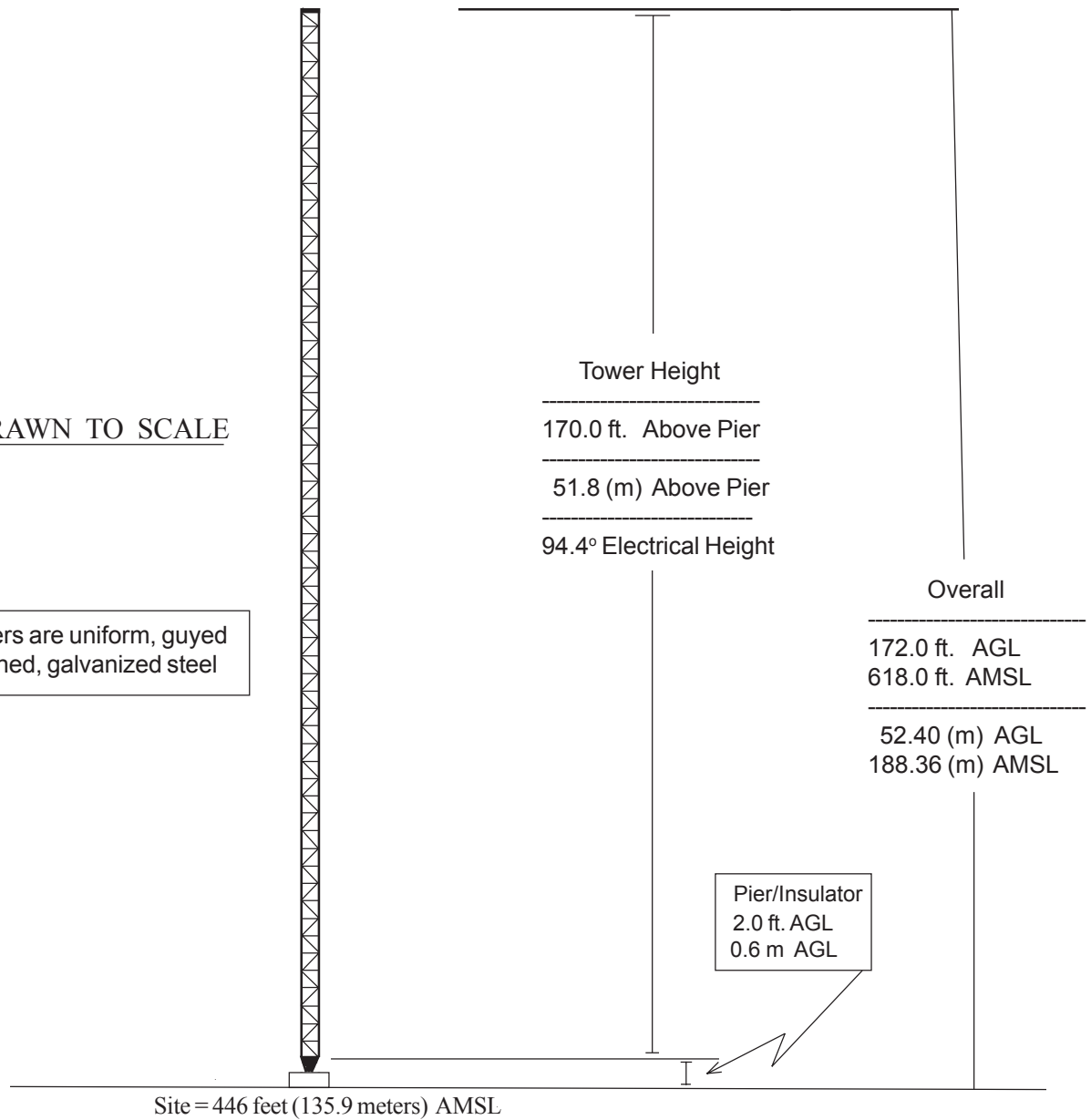
Land Required For KQQB Transmitter Site  
1520 kHz, Stockdale, Texas



## VERTICAL PLAN SKETCH FOR ALL PROPOSED KQQB TOWERS

NOT DRAWN TO SCALE

Note: All towers are uniform, guyed  
cross-sectioned, galvanized steel



**Pro Broadcasting, Inc**  
**KQQB (AM), 1520 kHz, Stockdale, Texas**  
**May, 2014**  
**Seeks: Minor Change in Licensed Facilities**



[FCC Home](#) | [Search](#) | [Updates](#) | [E-Filing](#) | [Initiatives](#) | [For Consumers](#) | [Find People](#)

## Antenna Structure Registration

[FCC](#) > [WTB](#) > [ASR](#) > [Online Systems](#) > TOWAIR[FCC Site Map](#)

### TOWAIR Determination Results

[? HELP](#)[New Search](#) [Printable Page](#)

#### \*\*\* NOTICE \*\*\*

TOWAIR's findings are not definitive or binding, and we cannot guarantee that the data in TOWAIR are fully current and accurate. In some instances, TOWAIR may yield results that differ from application of the criteria set out in 47 C.F.R. Section 17.7 and 14 C.F.R. Section 77.13. A positive finding by TOWAIR recommending notification should be given considerable weight. On the other hand, a finding by TOWAIR recommending either for or against notification is not conclusive. It is the responsibility of each ASR participant to exercise due diligence to determine if it must coordinate its structure with the FAA. TOWAIR is only one tool designed to assist ASR participants in exercising this due diligence, and further investigation may be necessary to determine if FAA coordination is appropriate.

#### DETERMINATION Results

**Structure does not require registration. There are no airports within 8 kilometers (5 miles) of the coordinates you provided.**

#### Your Specifications

##### NAD83 Coordinates

Latitude	29-11-35.0 north
Longitude	097-52-00.0 west

##### Measurements (Meters)

Overall Structure Height (AGL)	52.4
Support Structure Height (AGL)	52.4
Site Elevation (AMSL)	135.9

##### Structure Type

GTOWER - Guyed Structure Used for Communication Purposes

#### Tower Construction Notifications

Notify Tribes and Historic Preservation Officers of your plans to build a tower.

#### ASR Help

[ASR License Glossary](#) - [FAQ](#) - [Online Help](#) - [Documentation](#) - [Technical Support](#)

#### ASR Online Systems

[TOWAIR](#) - [CORES](#) - [ASR Online Filing](#) - [Application Search](#) - [Registration Search](#)

#### About ASR

[Privacy Statement](#) - [About ASR](#) - [ASR Home](#)[FCC](#) | [Wireless](#) | [ULS](#) | [CORES](#)[Help](#) | [Tech Support](#)

Federal Communications Commission  
445 12th Street SW  
Washington, DC 20554

Phone: 1-877-480-3201  
TTY: 1-717-338-2824