



Broadcast Engineering Services of Bonny Doon, Inc.

415 Emerald Forest Lane
Bonny Doon, California 95060
(831) 420-1571 dmsml@well.com

Donald E. Mussell Jr. NCE-CBT
Consulting Engineer

Engineering Statement Minor Change to K297AC Wailuku-Kahului, Maui, Hawaii

The licensee requests to modify K297AC to avoid interference to authorized first-adjacent facilities of KHEI-FM 298C Kehei, Hawaii (BLH-20090417AJE). The applicant requests modification to a second-adjacent channel, 296D (107.1 mhz). K297AC is a fill-in translator for KMJD Wailuku, Hawaii. The entire proposed 60 dbu contour of this translator is encompassed by the KJMD-FM 60 dbu contour.

The applicant proposes to utilize a site on an unpopulated hilltop on the Island of Lanai, using an existing 18 meter tower. The proposed location is an established electronic site.

A directional antenna, along with operation at 250 watts ERP is proposed. This location, antenna and power level combination is clear of any prohibited overlap to any existing or proposed stations, with the exception of second adjacent KHEI Haiku (BLH-20090417AJE) and third-adjacent KRYL (BLH-20080222ACF). However, the proposed translator's 100 dbu contour does not overlap any populated area. The maximum distance to the extent of the overlap contour is just over 1 kilometer in the maximum lobe), and the closest permanent residence or public road is over 500 meters distant from the proposed antenna location, the opposite direction of the main lobe. A site map is attached to this application, and the 100 dbu contour is plotted on the map.

The applicant is confident that this site, along with the proposed frequency change will resolve any interference concerns that the previous use of Ch. 297D may have raised.

Respectfully submitted,

Donald E. Mussell Jr. NCE-CBT
Consulting Engineer
October 20, 2010

Broadcast Engineering Services of Bonny Doon, Inc.
Don Mussell, Consulting Engineer

Ch 296 modification
Pacific Radio Group, Inc.
CH# 296D - 107.1 MHz, Pwr= 0.25 kW DA, HAAT= 0.0 M, COR= 988 M
Average Protected F(50-50)= 7.09 km
Standard Directional

REFERENCE 20 48 12.0 N. 156 51 51.0 W. DISPLAY DATES DATA 10-20-10 SEARCH 10-20-10

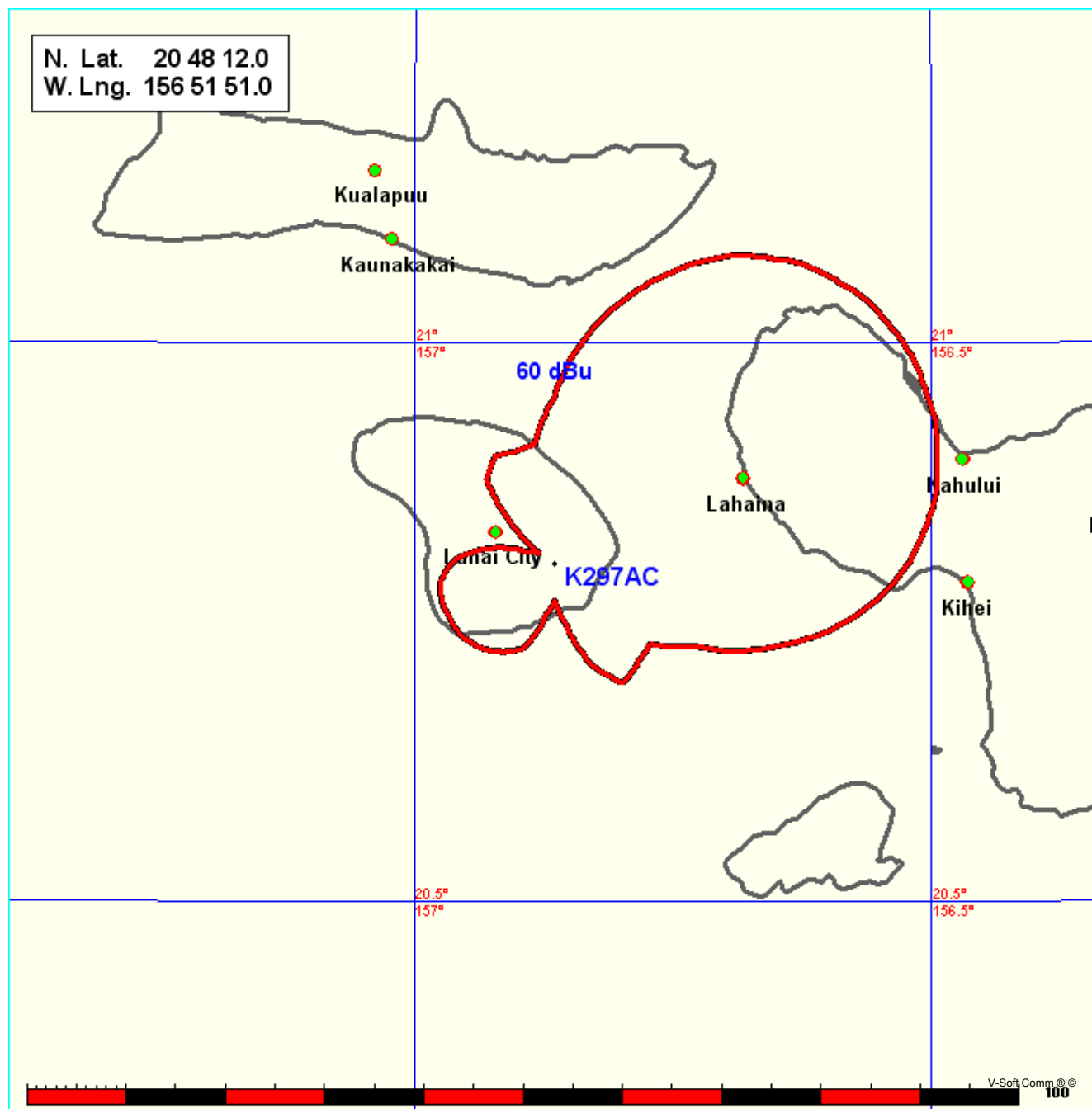
CH CITY	CALL	TYPE STATE	ANT STATE	AZI <--	DIST FILE #	LAT LNG	PWR(kw) HAAT(M)	INT(km) COR(M)	PRO(km) LICENSEE	*IN* (Overlap in km)	*OUT*
297D Wailuku, Etc.	K297AC	LIC DC_	HI	0.0 0.0	0.0 BLFT20060710ADM	20 48 12.0 156 51 51.0	0.250 988	26.6 988	16.5 Pacific Radio Group, Inc.	-43.2* -43.2*	
296C2 Kualapuu One Step Application	1348380	RSV-A	HI	318.5 138.4	56.3	21 10 57.0 157 13 26.0	50.000 150	115.0 207	26.5 Kemp Communications, Inc.	-68.7*< -8.3<	
296C2 Kualapuu counter proposal - 296C3 @ Kahuku, Hawaii.	R13530	ADD	HI	318.5 138.4	56.3	21 10 57.0 157 13 26.0	50.000 150	115.0 207	26.5 Kemp Communications, Inc.	-68.7*< -8.3<	
296C2 Kualapuu One Step Application	1346559	APP CX	HI	318.5 138.4	56.3 BNPH20091214AEI	21 10 57.0 157 13 26.0	50.000 101	115.0 207	26.5 Kemp Communications, Inc.	-68.7*< -8.3<	
293C Haiku	KRYL	LIC DC_	HI	106.9 287.1	54.4 BLH20080222ACF	20 39 36.0 156 21 50.0	72.000 696	15.7 1387	105.1 Big Island Broadcasting In	12.4 -51.1*<	
298D Lahaina	KHEI-1	APP DV_	HI	51.7 231.8	22.2 BNPFTB20100301ACU	20 55 37.0 156 41 47.0	0.100 37	0.4 37	4.5 Visionary Related Entertai	-19.1*< 16.6	
298C2 Kihei	KHEI-FM	LIC HX	HI	92.7 272.9	64.2 BLH20090417AJE	20 46 31.0 156 14 49.0	0.750 955	1.9 2099	59.0 Visionary Related Entertai	27.8 4.4	
296C3 Kahuku One Step Application	1324868	RSV-A	HI	311.1 130.7	148.9	21 40 48.0 157 57 03.0	25.000 100	127.3 189	50.2 Kona Coast Radio, LLC	15.8 74.3	
296C3 Kahuku new drop-in.	R13258	ADD	HI	311.1 130.7	148.9	21 40 48.0 157 57 03.0	25.000 100	127.3 189	50.2 Kona Coast Radio, LLC	15.8 74.3	

Terrain database is FCC NGDC 30 Sec , R= 73.215 qualifying spacings or FCC minimum Spacings in KM, M= Margin in KM
Contour distances are on direct line to and from reference station. Reference zone = , Co to 3rd adjacent.
Ant Column: (D= DA Standard, Z= DA 73.215, N= Not DA 73.215, _= Omni), Polarization (C,H,V,E), Beamtilt(Y,N,X)
"*"affixed to 'IN' or 'OUT' values = site inside protected contour.

Ch 296 modification - K297AC
Pacific Radio Group, Inc.

Coverage Study - FCC NGDC 30 Sec
10-20-2010

K297AC CH296 D , 0.25 kW, 0.0M HAAT, 988.0M COR AMSL
Service Contour = 60 dBu.

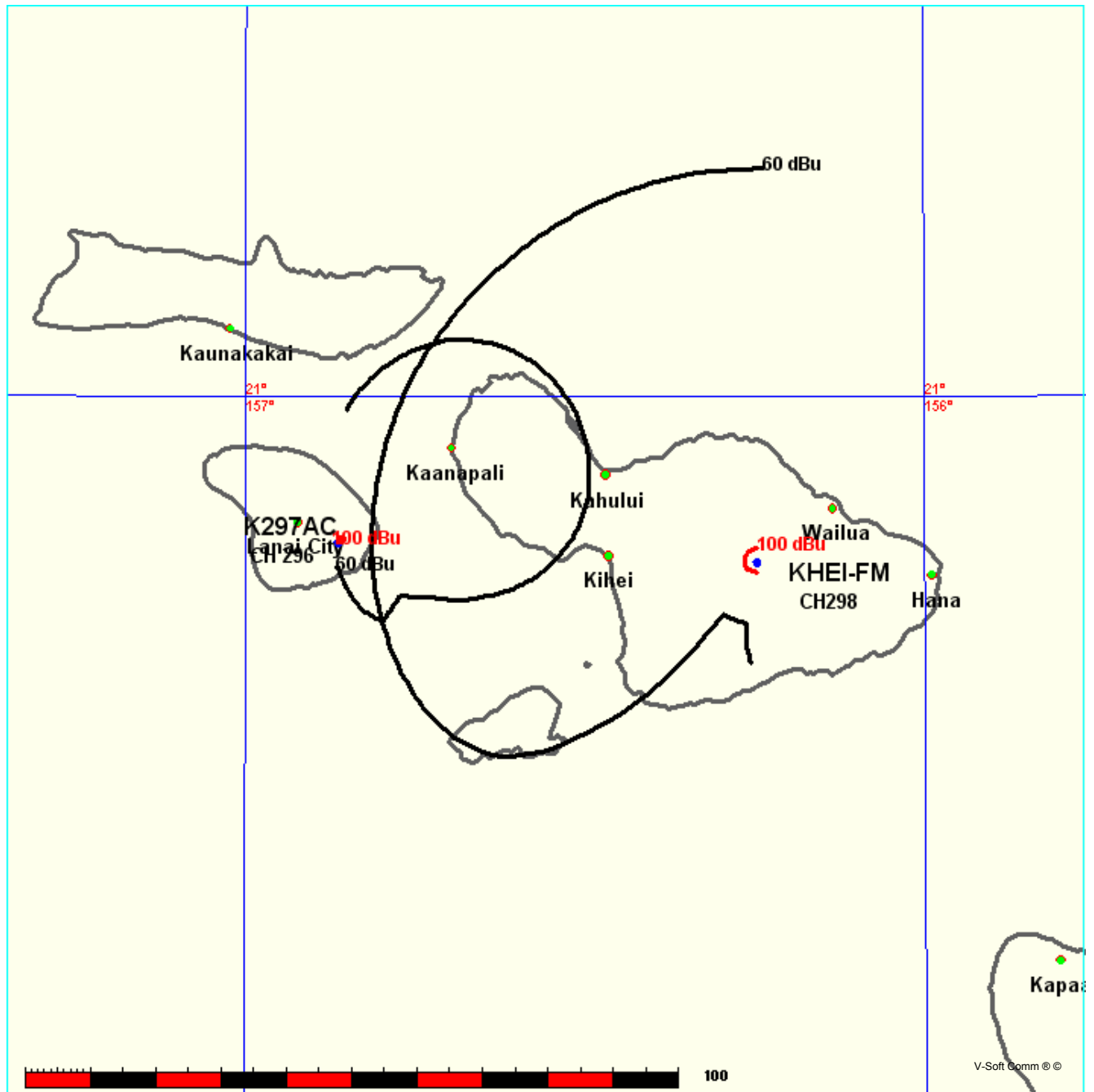


Ch 296 modification - KHEI
Pacific Radio Group, Inc.

FMCommander Single Allocation Study - 10-20-2010 - FCC NGDC 30 Sec
K297AC's Overlaps (In= 27.84 km, Out= 4.44 km)

K297AC CH 296 D DA
Lat= 20 48 12.0, Lng= 156 51 51.0
0.25 kW 0 M HAAT, 988 M COR
Prot.= 60 dBu, Intef.= 100 dBu

KHEI-FM CH 298 C2 BLH20090417AJE
Lat= 20 46 31.0, Lng= 156 14 49.0
0.75 kW 955 M HAAT, 2099 M COR
Prot.= 60 dBu, Intef.= 100 dBu

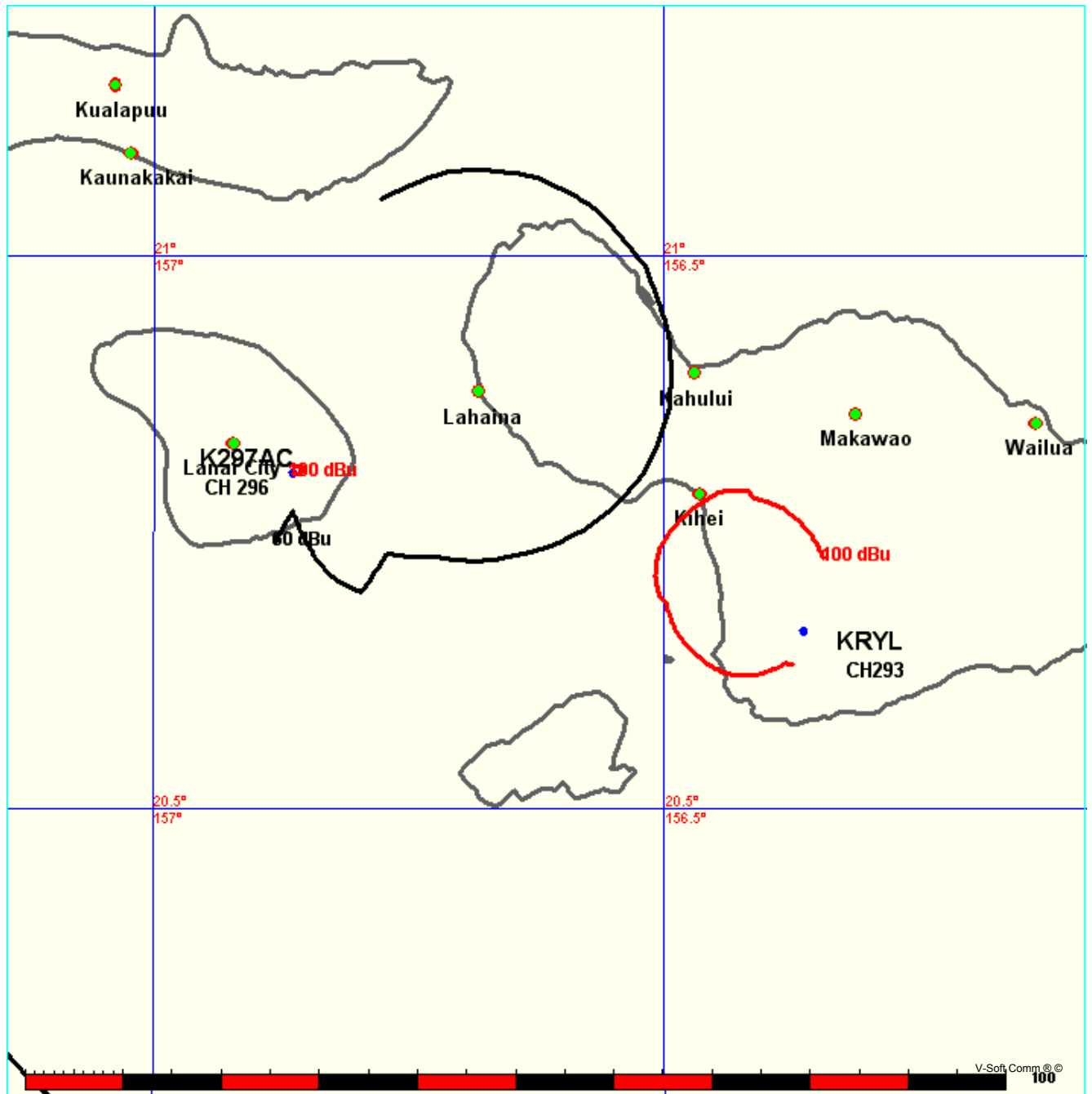


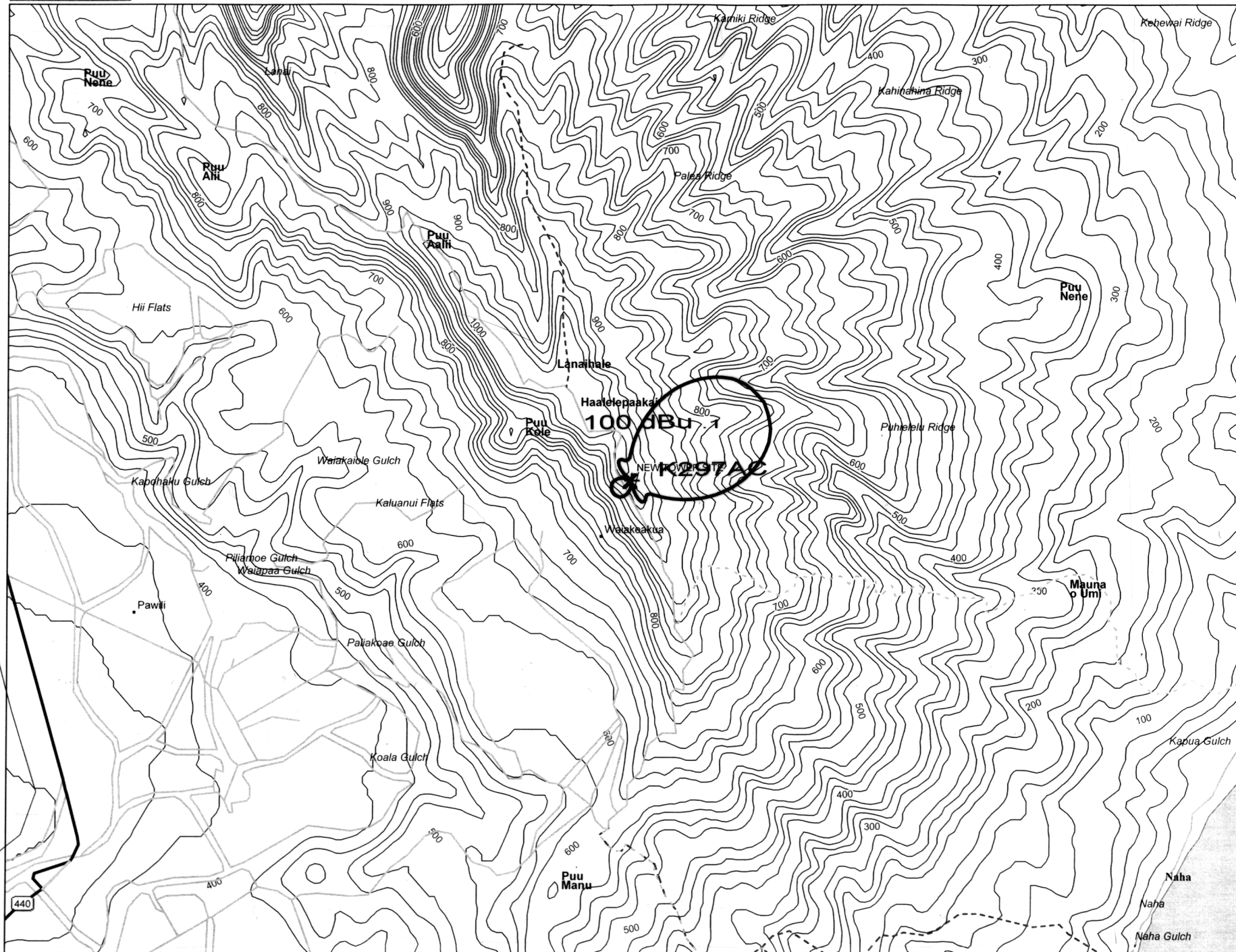
Ch 296 modification - KRYL
Pacific Radio Group, Inc.

FMCommander Single Allocation Study - 10-20-2010 - FCC NGDC 30 Sec
K297AC's Overlaps (In= 12.36 km, Out= -51.11 km)

K297AC CH 296 D DA
Lat= 20 48 12.0, Lng= 156 51 51.0
0.25 kW 0 M HAAT, 988 M COR
Prot.= 60 dBu, Intef.= 100 dBu

KRYL CH 293 C DA BLH20080222ACF
Lat= 20 39 36.0, Lng= 156 21 50.0
72.0 kW 696 M HAAT, 1387 M COR
Prot.= 60 dBu, Intef.= 100 dBu





Data use subject to license.

© 2004 DeLorme. Topo USA® 5.0.

www.delorme.com

TN
★
MN (10.0°E)
▲

Scale 1 : 37,500

0 1/4 1/2 3/4 1 m
0 1/4 1/2 3/4 1 km

1" = 952.5 m

Data Zoom 12-4

State of Hawaii)
Kilauea)
County of Kauai)

That he is recognized as a Broadcast Technologist by the Society of Broadcast Engineers, License # 22301, and a member of the Society of Broadcast Engineers since 1980;

That he has submitted many applications to the Federal Communications Commission for broadcast and auxiliary broadcast construction permits and licenses, and that his experience in Radio and Television broadcast engineering extends over four decades;.



Donald E. Mussell Jr. NCE-CBT
Consulting Engineer
October 20, 2010