

TECHNICAL EXHIBIT
LPTV APPLICATION FOR CONSTRUCTION PERMIT
STATION W26CX (FACILITY ID 23848)
MEMPHIS, TENNESSEE
CH 26 105.8 KW (MAX-DA)

Technical Narrative

This Technical Exhibit supports an application for construction permit for low power television (LPTV) station W26CX at Memphis, Tennessee. Station W26CX is permitted to operate on analog channel 26 with a directional antenna maximum (visual) effective radiated power (ERP) of 105.8 kW and an antenna height above mean sea level (RCAMSL) of 270 meters (BLTTL-20060901ACA).

Proposed Facilities

This application proposes operation on analog channel 26 from a registered tower structure. The proposed site is located 9 kilometers east of the current site. An MCI, model 955318 master directional antenna with a maximum ERP of 105.8 kW and antenna RCAMSL of 270 meters is proposed. The transmitter site coordinates are (NAD27): 35-12-34 N, 89-49-01 W. The ASRN for the existing supporting structure is 1249321 (see Figure 1).

Figure 2 is a map showing the licensed and proposed analog 74 dBu contours. As can be seen on the map, there is common area where both contours overlap.

Allocation Considerations

A study has been conducted to assure that the proposal will not create prohibited interference with other licensed, authorized or pending analog or digital TV, LPTV/translator and Class A TV stations.

Using the procedures outlined in the FCC's OET-69 Bulletin, only de minimis interference is predicted to occur to other stations. If necessary, a waiver of the FCC rules is respectfully requested based on use of the procedures outlined in the FCC's OET-69 Bulletin to the remaining LPTV/translator stations.

Stations Potentially Affected by Proposed Station

Chan	Call	City/State	Dist(km)	Status	App. Ref. No.	Calc. OET-69 Interf.
26	WPTY-TV	MEMPHIS TN	8.2	LIC	BMLCT-20050427ABO	0
25	WPTY-TV	MEMPHIS TN	8.2	LIC	BLCDT-20050628AAP	0
26	KVTH	HOT SPRINGS AR	309.1	CP	BPCDT-20080331APY	0
30	WLMT	MEMPHIS TN	8.2	LIC	BMLCT-20050427ABQ	0

The applicant recognizes the proposal is secondary to authorized full-service analog and DTV operations. The applicant understands that it must correct and/or eliminate prohibited interference that may result from its proposed operation.

Radiofrequency Electromagnetic Field Exposure

The proposed W26CX facilities were evaluated in terms of potential radio frequency (RF) energy exposure at ground level to workers and the general public. The radiation center for the antenna is located 186 meters above ground level. The proposed ERP of 105.8 kW is assumed. A conservative relative field value of 0.4 was assumed for the MCI directional antenna's downward radiation. The calculated power density at a point 2 meters (6.6 feet) above ground level is 0.0084 mW/cm². This is less than 5% of the FCC's recommended limit of 0.36 mW/cm² for channel 26 for an "uncontrolled" environment.

Access to the transmitting site will be restricted and appropriately marked with warning signs. As this will be a multi-user site an agreement between the stations will control access. In the event that workers or other authorized personnel enter restricted areas or climb the tower, appropriate measures will be taken to assure worker safety with respect to radio frequency radiation exposure. Such measures include reducing the average exposure by spreading out the work over a longer period of time, wearing "accepted" RFR protective clothing and/or RFR exposure monitors or scheduling work when the stations are at reduced power or shut down.

It is noted that this statement only addresses the potential for radiofrequency electromagnetic field exposure. All other aspects of the environmental processing analysis will be or already have been provided to the FCC by the tower owner as part of the tower registration process.

Charles A. Cooper

du Treil, Lundin & Rackley, Inc.

201 Fletcher Avenue

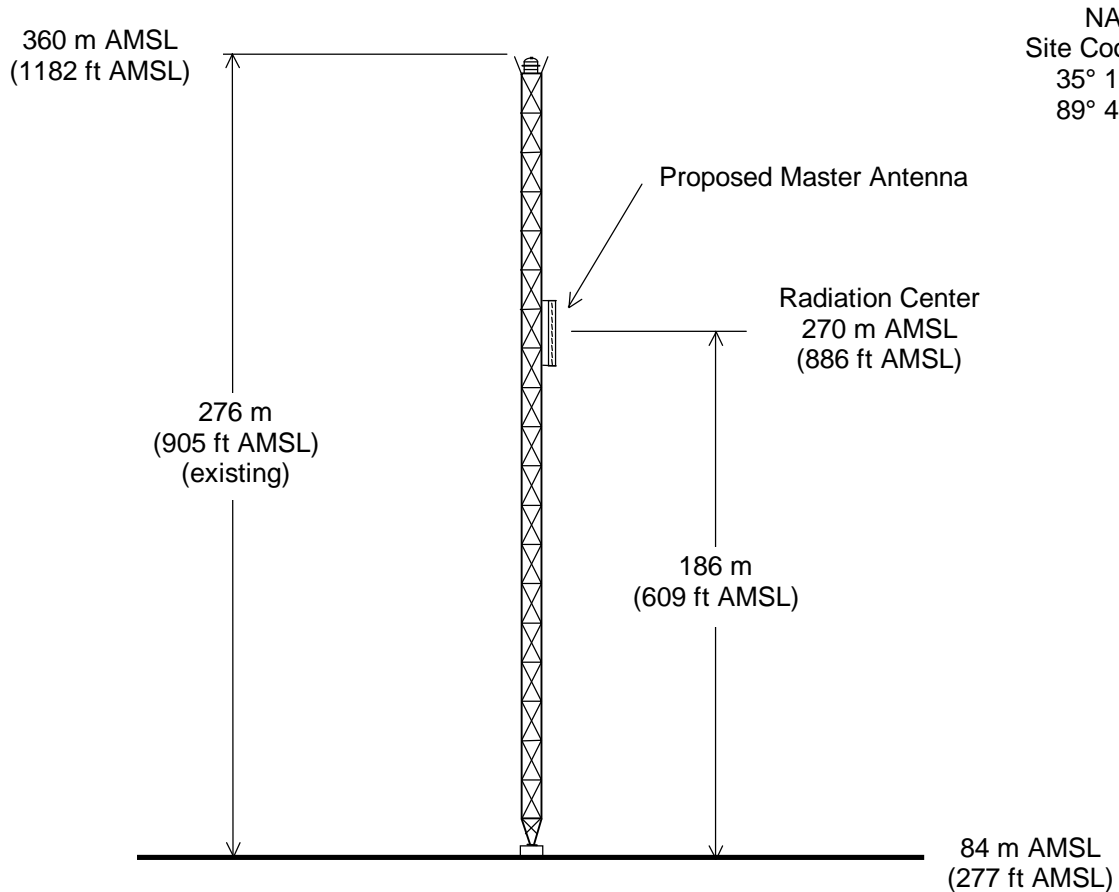
Sarasota, Florida 34237

(941) 329-6000

June 2, 2008



ASRN: 1249321



Not to Scale

ANTENNA AND SUPPORTING STRUCTURE

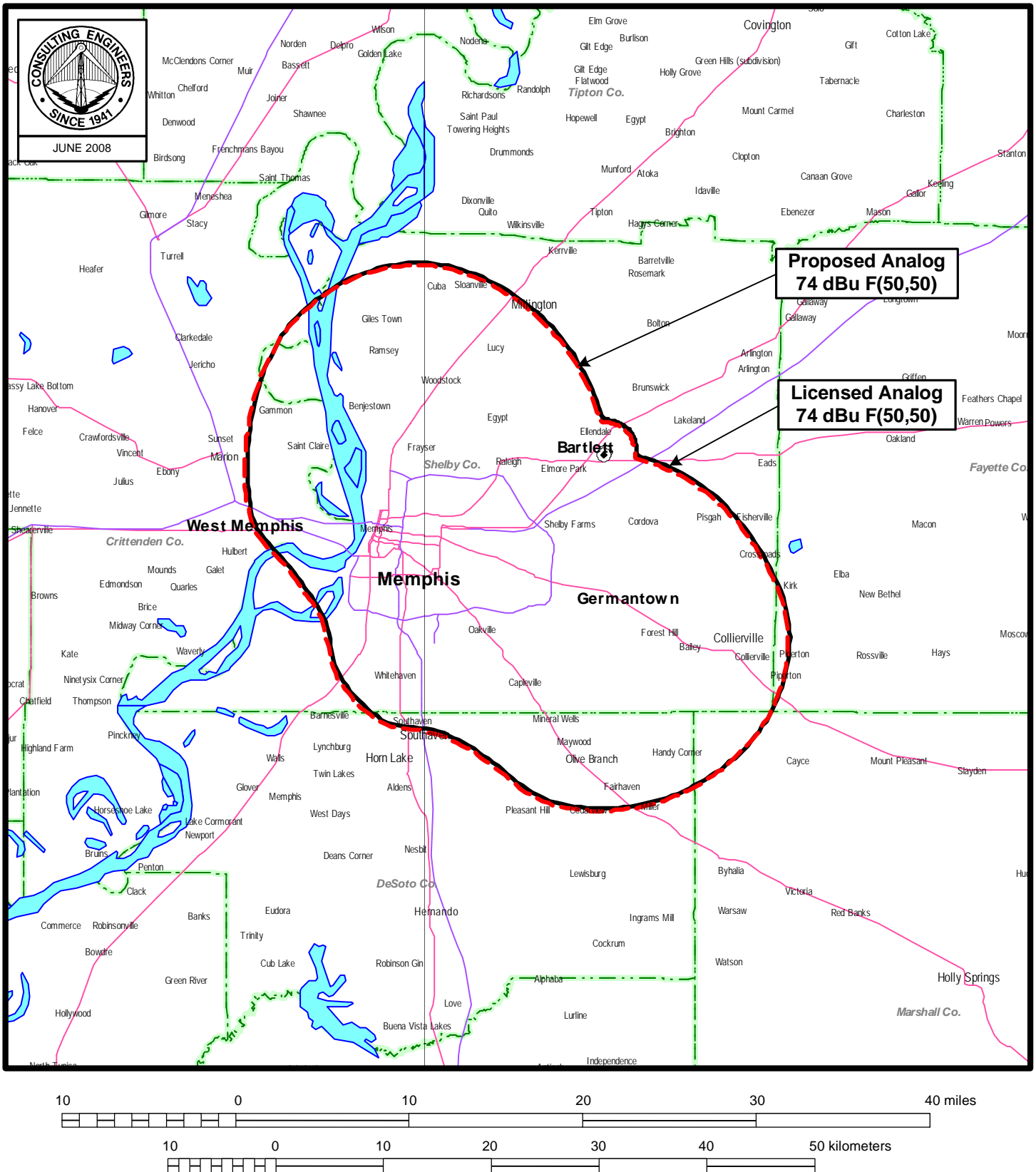
STATION W26CX

MEMPHIS, TENNESSEE

CH 26 105.8 KW (MAX-DA)

du Treil, Lundin & Rackley, Inc. Sarasota, Florida

Figure 2



PREDICTED COVERAGE CONTOURS

STATION W26CX

MEMPHIS, TENNESSEE

CH 26 105.8 KW (MAX-DA)

du Treil, Lundin & Rackley, Inc Sarasota, Florida