

CBS Radio Stations Inc. ("CBS"), licensee of KXFG(FM), requests issuance of a modified license to indicate Menifee, California as the station's community of license. CBS also requests that CDBS be updated to reflect Menifee as KXFG(FM)'s community of license.

The station's community of license is presently listed as Sun City, California. By vote of its residents on June 3, 2008, Sun City merged into the newly incorporated City of Menifee, California, effective October 1, 2008. Due to this action, Sun City is no longer considered an independent census-designated place.

The former Sun City was located within the boundaries of the new City of Menifee. KXFG(FM)'s ability to serve its community of license has not changed. The entire City of Menifee is located within the 70 dBu city-grade contour of KXFG(FM).

Background materials related to the formation of the City of Menifee are attached hereto, consisting of the following:

Exhibit A: Julissa McKinnon, *Council-Elect to Lay Groundwork; Menifee: Sixty Percent Of Voters Approve Cityhood For A 48-square-mile Area, Effective Oct. 1*, Riverside Press-Enterprise, June 5, 2008, at C1.

Exhibit B: U.S. Census Bureau, *Boundary and Annexation Survey (BAS) Incorporations, Mergers, Consolidations, and Disincorporations for 2000-2010*, available at http://www.census.gov/geo/partnerships/bas/bas_newannex.html (noting, on line 26, the establishment of Menifee).

Exhibit C: City of Menifee Official Website, *History of the City of Menifee*, available at <http://www.cityofmenifee.us/index.aspx?nid=85> (noting that "[t]he City of Menifee includes the communities of: Sun City, Quail Valley, and portions of Romoland.")

Exhibit D: Bonterra Consulting (Prepared for the Riverside County Local Agency Formation Commission), *Negative Declaration, Menifee Valley Incorporation Project*, July 23, 2007, Exhibit 2 (a map showing Sun City as completely encompassed by the proposed boundaries of the new city of Menifee). Full document available at http://www.lafco.org/sites/default/Incorporations/Menifee/Draft_Final_ND-071807.pdf.

Additional information about the City of Menifee can be found on the City's official website: <http://www.cityofmenifee.us/>.

Exhibit A



8 of 83 DOCUMENTS

Copyright 2008 The Press Enterprise, Inc.
All Rights Reserved
The Press Enterprise (Riverside, CA.)

June 5, 2008, Thursday

SECTION: LOCAL; Pg. C01

LENGTH: 564 words

HEADLINE: COUNCIL-ELECT TO LAY GROUNDWORK;
Menifee: Sixty Percent Of Voters Approve Cityhood For A 48-square-mile Area, Effective Oct. 1.

BYLINE: JULISSA MCKINNON, THE PRESS-ENTERPRISE

BODY:

Preparations for the incorporation of the greater Menifee and Sun City area were already under way Wednesday with about 60 percent of voters approving cityhood, preliminary results from the Riverside County registrar of voters office showed.

The majority of voters also chose Menifee as the name of their new city and preferred that future council members be chosen by district rather than be elected at large.

The 48-square-mile area encompassing Menifee, Sun City, Quail Valley and parts of Romoland will officially incorporate Oct. 1.

Prior to that, the top five vote-getting council candidates said they plan to meet and begin laying the foundations for the new city in coming weeks.

"We have zero. We are starting from scratch. First of all we need to schedule a meeting for the council-elect," said Darcy Kuenzi, who ranked among the winning candidates.

According to the ballot measure, the top vote-getter, Wallace Edgerton, will assume the role of mayor with a four-year term.

The candidates who took second and third place, Kuenzi and Frederick Twyman III, will begin four-year terms next fall.

The candidates ranking in fourth and fifth place, Scott Mann and John Denver, will serve two-year terms.

The registrar has until July 1 to make the preliminary vote-count official.

COUNCIL-ELECT TO LAY GROUNDWORK; Menifee: Sixty Percent Of Voters Approve Cityhood For A
48-square-mile Area, Effective Oct. 1. The Press Enterprise (Riverside, CA.) June 5, 2008, Thursday

In the meantime, most of the apparently victorious candidates plan to start tackling several city-related tasks.

This work includes securing a meeting place, hiring a city manager, city clerk and city attorney, and possibly starting a Web site to provide residents with information regarding the area's transition to cityhood.

Any action taken by the council-elect prior to Oct. 1 will have to be ratified again by the council once it officially takes office, said George Spiliotis, the executive director of the Local Agency Formation Commission which oversees the incorporation of new cities.

Twyman, a trustee of the Menifee Union School District, said he plans to resign Oct. 1 from the school board. State law forbids him from simultaneously governing a school district and a city, he said.

While it is a time of celebration for many, Edgerton said he believes the new council should be "very sympathetic" to the 40 percent of voters who opposed incorporation.

"A minority voted against it. Many people were fearful of pocketbook issues, especially seniors who have very limited funds," Edgerton said. "Part of our responsibility is to as quickly as possible alleviate some of their worries. We can't do that until we get our numbers crunched."

Edgerton added that before the council-elect looks to any management or consulting firms for city staff, it should revisit LAFCO's "Comprehensive Fiscal Analysis" of the Menifee area and start hammering out a tentative budget.

"You want to make sure you develop the budget," said Edgerton, a former Long Beach councilman. "After all, that's the critical part of our job."

Reach Julissa McKinnon at 951-375-3730 or jmckinnon@PE.com

* * *

MENIFEE INCORPORATION TIMELINE

JULY 1, 2008: Deadline for the Riverside County registrar of voters to certify election results.

OCT. 1, 2008: The date Menifee officially incorporates into a city. The new City Council takes oath.

JUNE 30, 2009: Until this date state law requires the county to continue providing its current services to the new city. The city then has five years to reimburse the county for the cost of these services.

GRAPHIC: (1) John Denver (2) Wallace Edgerton (3) Darcy Kuenzi (4) Scott Mann (5) Frederick Twyman III MUGS

LOAD-DATE: June 9, 2008

Exhibit B

State (FIPS)	State (USPS)	Place Name and Description	Place (FIPS)	Place (ANSI)	County Name(s) in which Place Incorporated	County	Effective Date	Date Reported	Notes and Comments
01	AL	Bakertown city	03724	02405200	Barbour County	005	7/2/1987	4/3/2002	included in corrected counts errata for 2000
01	AL	Center Point city	13264	02386635	Jefferson County	073	3/18/2002	4/12/2003	
01	AL	Chey city	12566	02386635	Jefferson County	073	8/6/2000	12/8/2006	
01	AL	Cusseta town	19216	02434934	Cherokee County	017	4/28/2007	4/10/2008	
01	AL	Kohytown town	39472	02405933	Cherokee County	037	1/13/2001	4/8/2002	
01	AL	Mapola Springs town	48072	02406080	Blount County	003	6/29/2006	6/19/2007	
01	AL	Marion town	52946	02434938	Tallapoosa County	121	9/1/2002	4/10/2008	
01	AL	Marionville town	59088	02350543	Blount County	003	6/10/2009	7/12/2009	
01	AL	Partridge town	60648	02424931	Blount County	003	4/2/2004	4/19/2008	
01	AL	Princeton city	71190	02403476	Lee County	081	6/22/2001	8/10/2001	
01	AL	Shiloh Station city	73352	02434938	Marion County	093	8/6/2002	1/15/2007	
01	AL	Valley Grande city	78232	02405635	Dallas County	047	2/2/2003	9/16/2004	
01	AL	Westover town	81504	02406871	Shelby County	117	1/31/2001	6/14/2004	
02	AK	Adak city	00850	02419346	Admiral West Census Area	016	4/20/2001	5/9/2002	
02	AK	Gustavus city	30940	02419346	Admiral West Census Area	105	4/1/2004	2/7/2005	Originally incorporated in Skagway-Hoonah-Angoon Census Area (FIPS: 232); now located in Hoonah-Angoon Census Area (FIPS: 105) due to organization of Skagway Municipality 6/20/2007
04	AZ	Dewey-Humboldt town	19145	02412424	Yavapai County	025	12/20/2004	3/7/2005	
04	AZ	Maricopa city	44410	02411032	Pinal County	021	10/15/2003	1/13/2004	
04	AZ	Star Valley town	69480	02413328	Gila County	007	1/11/2005	3/6/2006	Originally incorporated as Diamond Star town (FIPS: 19185); name changed to Star Valley 6/7/2008
05	AR	Bella Vista town	04840	02405233	Benton County	007	12/7/2006	1/3/2007	
05	AR	Clarksville city	14050	02404055	Crittenden County	035	11/15/2000	3/7/2002	
05	AR	Magnet Cove town	43430	02408078	Hot Springs County	059	4/27/2000	4/19/2000	
05	AR	Midway town	45560	02406162	Hot Springs County	059	5/3/2000	2/23/2001	
06	CA	Aliso Viejo city	00947	02409683	Orange County	059	7/1/2001	9/10/2001	
06	CA	El Grove city	22020	02410425	Sacramento County	067	7/1/2000	5/6/2001	
06	CA	Golieta city	30378	02015548	Santa Barbara County	083	10/22/2001	4/5/2002	
06	CA	Marlette city	48842	02487157	Riverside County	065	10/1/2008	8/20/2008	
06	CA	Rancho Cordova city	59444	02411513	Sacramento County	067	7/1/2003	7/1/2003	
06	CA	Wildomar city	85448	02487148	Riverside County	065	7/1/2008	8/20/2008	
08	CO	Castle Pines North city	12380	02500938	Douglas County	035	11/6/2007	11/18/2008	
08	CO	Centennial city	12815	02409422	Arapahoe County	005	2/7/2001	6/11/2001	
08	CO	Wetlands town	82900	None	Adams County	001	6/8/2004	8/20/2005	Disincorporated 1/30/2006; defined as a Census Designated Place for the 2010 Census
12	FL	Culler Bay town	15988	02409348	Miami-Dade County	005	11/9/2005	6/6/2006	
12	FL	Doral city	17935	02404236	Miami-Dade County	066	6/23/2003	9/15/2004	
12	FL	Grant-Valkaria town	27280	02406605	Brevard County	009	7/26/2006	7/6/2007	
12	FL	Loxahatchee Groves town	41577	02406054	Palm Beach County	099	11/6/2006	3/26/2007	
12	FL	Miami Gardens city	45060	02404249	Miami-Dade County	066	5/13/2003	4/1/2004	
12	FL	Miami Lakes town	45100	02406152	Dade County	086	12/5/2000	7/10/2001	
12	FL	Palmetto Bay village	54275	02407519	Miami-Dade County	086	9/11/2002	12/29/2004	
12	FL	Southwest Ranches town	86135	02407376	Broward County	011	6/6/2000	8/14/2001	
12	FL	West Park city	78658	02405714	Broward County	011	3/1/2005	6/12/2005	
13	GA	Chattahoochee Hills city	15552	02434930	Fulton County	121	9/26/2008	11/3/2008	Originally incorporated as Chattahoochee Hill Country city (FIPS: 15550); name changed to Chattahoochee Hills 9/23/2008
13	GA	Dunwoody city	24768	02558462	DeKalb County	089	12/1/2008	4/27/2009	
13	GA	Johns Creek city	42425	02404806	Fulton County	121	12/1/2006	1/29/2007	
13	GA	Millon city	51670	02404269	Fulton County	121	12/1/2006	3/5/2007	
13	GA	Sandy Springs city	68516	02405417	Fulton County	121	12/1/2005	3/7/2006	
17	IL	Big Rock village	00978	02398118	Kane County	089	7/26/2001	8/22/2001	
17	IL	Cameron Hills village	10908	02357470	Kane County	089	4/17/2007	7/23/2007	
17	IL	Curran village	18147	02398660	Sangamon County	167	4/5/2005	6/23/2005	
17	IL	Garden Prairie village	28612	02512769	Boone County	007	2/5/2008	6/12/2008	
17	IL	Homewood village	35535	02398535	Will County	197	4/17/2001	8/18/2001	
17	IL	Kaneland village	38885	02398325	Kane County	089	11/7/2006	1/30/2007	
17	IL	Lake Karlo village	41214	02398380	Macoupin County	117	3/24/2000	6/4/2001	
17	IL	Limestone village	43510	02398440	Kankakee County	091	12/7/2006	4/2/2007	
17	IL	McClure village	45525	02398285	Alexander County	003	11/2/2004	6/20/2005	
17	IL	Midbrook village	49100	02398351	Kendall County	093	11/5/2002	3/21/2003	
17	IL	Montrose Center village	50062	02398384	Ogle County	141	3/18/2/2004	6/10/2004	
17	IL	Plattville village	60391	02399688	Kendall County	093	3/21/2006	4/4/2007	
17	IL	Sammons Point village	67372	02399177	Kankakee County	091	3/21/2006	11/15/2006	Original incorporation reversed 8/8/2007 and subsequently re-incorporated.
18	IN	Fairland town	22396	02396931	Shelby County	145	8/16/2008	1/13/2009	
18	IN	Richland town	64206	02396366	Spencer County	147	7/1/2008	1/4/2008	
19	IA	Maharishi Vedic City city	48500	023965815	Jefferson County	101	7/25/2001	2/28/2002	Originally incorporated as Vedic City city (FIPS: 80557); name changed to Maharishi Vedic City 11/14/2003
20	KS	Parkfield city	54560	02396150	Cowley County	035	3/16/2004	4/12/2005	
22	LA	Central city	13960	02504823	East Baton Rouge Parish	033	7/11/2005	11/30/2008	
22	LA	Cresco village	18295	02407438	Grant Parish	043	10/7/2000	10/19/2004	
22	MA	Anesbury city	01280	02377978	Essex County	009	10/26/2009	10/26/2009	Incorporation of former Amesbury town (FIPS: 01185)
25	MA	Braintree city	07740	02377693	Norfolk County	021	10/26/2009	10/26/2009	Incorporation of former Braintree town (FIPS: 07685)
25	MA	Greenfield city	21700	02378024	Franklin County	011	10/26/2009	10/26/2009	Incorporation of former Greenfield town (FIPS: 27025)
25	MA	Palmer city	52144	00619387	Hampden County	013	10/26/2009	10/26/2009	Incorporation of former Palmer town (FIPS: 52105)
25	MA	Southbridge city	63345	00619383	Worcester County	027	10/26/2009	10/26/2009	Incorporation of former Southbridge town (FIPS: 63270)
25	MA	West Springfield city	78972	02378042	Hampden County	013	10/26/2009	10/26/2009	Incorporation of former West Springfield town (FIPS: 77850)
25	MA	Weymouth city	81005	02378050	Suffolk County	025	10/26/2009	10/26/2009	Incorporation of former Weymouth town (FIPS: 80930)
27	MN	Winthrop city	12718	02398310	Anoka County	003	9/21/2006	4/2/2007	Incorporation of former Winthrop town (FIPS: 12718)
27	MN	Northfield city	47536	02437910	Anoka County	003	7/7/2008	10/26/2009	Incorporation of former Burns township (FIPS: 47536)
27	MN	St. Augusta city	56724	02396474	St. Louis County	145	5/22/2000	5/29/2001	Incorporation of former St. Augusta township (FIPS: 56732); originally incorporated as Venturia city (FIPS: 66700); name changed to St. Augusta 11/07/2000
27	MN	Scandia city	59900	02396548	Washington County	183	1/1/2007	3/22/2009	
28	MS	Byram city	10140	02505562	Hinds County	049	6/16/2009	6/24/2009	
29	MO	Bridleway village	07822	02394241	Taney County	213	8/20/2002	8/7/2003	Disincorporated 8/17/2009
29	MO	Ginger Blue village	27100	02398965	McDonald County	119	12/11/1985	12/13/2005	

State (FIPS)	State (USPS)	Place Name and Description	Place (FIPS)	Place (ANSI)	County Name(s) in which Place Incorporated	County	Effective Date	Date Reported	Notes and Comments
29	MO	Goodnight village	27800	02398177	Polk County	137	2/24/2003	9/8/2004	
29	MO	Goss town	28000	02398566	Monroe County	187	3/26/2001	8/8/2001	
29	MO	Huntsdale town	33868	02397004	Boone County	019	2/1/2003	6/6/2005	
29	MO	Kibbyville village	39800	02398359	Taney County	213	6/4/2001	8/22/2001	
29	MO	Lake Tarkenton village	40214	02585135	Jefferson County	099	6/17/2009	2/25/2010	
29	MO	Leah Lloyd village	43468	02398480	Cass County	037	9/4/2003	4/20/2005	
29	MO	Peaceful Village village	56620	02585133	Jefferson County	099	9/9/2008	3/1/2010	
29	MO	Pendleton Village	56882	02398948	Warren County	218	8/10/1999	8/14/2001	Included in corrected counts errata for 2000
29	MO	Pierpont village	57512	02398969	Boone County	018	11/3/2004	5/10/2005	
29	MO	Philo village	58088	02398986	Texas County	215	1/1/2000	8/10/2001	
29	MO	Riverview Estates village	62210	02417410	Cass County	037	5/13/2003	7/9/2007	
29	MO	Saddlebrooke village	63857	02399153	Christian County	043	3/1/2003	6/9/2005	
29	MO	Three Creeks village	73127	02547777	Warren County	219	11/4/2008	2/23/2009	
29	MO	West Sullivan village	79000	02400145	Crawford County	055	4/1/2000	6/19/2001	
29	MO	Windsor Place village	80360	02398714	Cooper County	053	2/28/2006	4/23/2007	
32	NV	Fernley city	24900	02410499	Lyon County	019	7/1/2001	4/25/2002	
35	NV	Parlatia town	36160	02424937	Valencia County	081	7/1/2007	3/26/2008	
36	NY	Sagehenack village	84452	02391112	Suffolk County	103	9/2/2005	4/3/2007	
36	NY	South Blooming Grove village	88110	02391145	Orange County	071	7/14/2006	5/3/2007	
37	NC	Woodbury village	82750	02391224	Orange County	071	6/26/2008	3/26/2007	
37	NC	Archer Lodge town	01760	02612171	Johnston County	101	11/10/2009	4/7/2010	
37	NC	Butner town	08360	02424932	Granville County	077	11/1/2007	4/14/2008	
37	NC	Duck town	18060	02406400	Dare County	055	5/1/2002	7/30/2002	
37	NC	Eastover town	19740	02426870	Cumberland County	051	7/26/2007	5/9/2008	
37	NC	Fairview town	22500	02406461	Union County	179	10/4/2001	4/16/2002	
37	NC	Grantisboro town	37520	02406804	Pemlico County	137	12/17/2001	5/7/2002	
37	NC	Midland town	42760	02408159	Cabarrus County	025	11/7/2000	8/8/2001	
37	NC	Midway town	42860	02424935	Davidson County	057	6/29/2006	4/10/2008	
37	NC	Mills River town	43360	02406166	Henderson County	089	6/24/2003	3/31/2004	
37	NC	Misenheimer village	43580	02407503	Stanly County	167	6/26/2003	3/17/2004	
37	NC	Ossipee town	49800	02407057	Alamance County	001	12/9/2002	3/19/2004	
37	NC	Red Cross town	55480	02407184	Stanly County	167	8/1/2002	7/21/2003	
37	NC	Walburg town	70740	02406823	Davidson County	057	6/29/2004	9/22/2004	
40	OK	Bridge Creek town	08725	02411725	Groby County	051	1/6/2002	7/12/2002	
40	OK	Foster town	27500	02412646	Gavin County	049	1/6/2002	7/12/2002	
40	OK	Friendship town	27600	02412680	Jackson County	065	12/6/1999	1/23/2001	Included in corrected counts errata for 2000
40	OK	IXL town	37410	02412798	Okluskee County	107	10/24/2001	5/14/2002	
40	OK	Kalle town	38700	02412817	Gavin County	049	7/27/2004	9/21/2004	
40	OK	Sweetwater town	71800	02413357	Beckham County	009	8/27/2003	5/13/2003	
40	OK	Verdigris town	77050	02413429	Rogers County	129	6/6/1980	4/4/2005	
41	OR	Demiscus city	17800	02410292	Clatskanie County	005	11/22/2004	4/4/2005	
41	OR	Le Prie city	41050	02411579	Deschutes County	017	12/7/2006	4/3/2007	
45	SC	Jenkinville town	36655	02542194	Fairfield County	039	3/6/2008	2/4/2009	
46	SD	Piedmont city	49500	02547299	Meade County	093	8/16/2007	3/6/2009	
46	SD	Summerset city	62155	02390001	Meade County	093	6/7/2005	7/19/2006	
47	TN	Bean Station city	32780	02403829	Granger County	057	11/4/1986	6/17/2001	Included in corrected counts errata for 2000
47	TN	Harrigote city	32840	02403807	Claborn County	025	11/31/1992	6/10/2002	Included in corrected counts errata for 2000
48	TX	Bedias city	07144	02409811	Gaines County	185	11/20/2003	4/23/2007	
48	TX	Brzos Bend city	10087	02409895	Hood County	221	5/24/2004	7/25/2005	
48	TX	Brzos County city	10090	02409896	Austin County	015	5/6/2000	7/10/2001	
48	TX	Cashion Community city	13188	02409404	Wichita County	485	2/29/2000	5/31/2001	
48	TX	Cresson city	17648	02410283	Hood County	221	11/6/2001	6/17/2003	
48	TX	DeCordova city	19570	02410309	Parker County	387	1/20/2000	6/1/2001	
48	TX	DISH town	20540	02412433	Hood County	221	5/15/2000	7/13/2001	Originally incorporated as Clark town (FIPS: 15130); name changed to DISH 11/15/2005
48	TX	East Bernard city	21988	02410385	Denison County	121	9/13/2003	6/14/2004	
48	TX	Escobares city	24552	02410454	Wharton County	481	10/22/2005	8/6/2006	
48	TX	Hideway city	33578	02410757	Steri County	427	8/20/2001	3/25/2002	
48	TX	Horsehoe Bay village	34862	02410794	Burnet County	053	9/20/2006	4/2/2007	
48	TX	Iola city	36068	02439046	Gaines County	185	11/19/2007	7/28/2008	
48	TX	Ivenhoe city	37112	02575704	Tyler County	457	1/13/2009	1/28/2010	
48	TX	Ivenhoe North city	37116	02575705	Tyler County	457	1/13/2009	1/28/2010	Merged into Nantoe city (FIPS: 37112) after the 2010 census (11/13/2010)
48	TX	Jerrell city	37386	02410133	Williamson County	481	5/8/2001	4/3/2002	
48	TX	Kurten town	39940	02412850	Brzos County	041	8/22/2000	9/10/2001	
48	TX	Point Venture village	58588	02413579	Texas County	453	8/1/2000	5/2/2007	
48	TX	Salado village	64268	02413586	Bell County	027	8/15/2000	6/25/2001	
48	TX	Scurry town	66368	02413288	Kaufman County	257	5/8/2003	1/22/2004	
48	TX	Staples city	70052	02633299	Guadalupe County	187	5/20/2008	7/6/2010	
48	TX	Taylor Landing city	71986	02412037	Jefferson County	245	9/19/2005	1/4/2006	
48	TX	Union Valley city	74372	02435849	Hunt County	231	11/6/2007	5/22/2008	
48	TX	Volente village	75752	02413588	Texas County	453	2/18/2003	6/15/2005	
48	TX	Von Ormy city	75764	02500157	Boxer County	029	5/10/2008	9/22/2008	
48	TX	Webbville village	76824	02413600	Texas County	453	2/18/2003	9/22/2008	
48	TX	Weston Lakes city	77748	02518808	Fort Bend County	157	5/20/2008	12/15/2008	
48	TX	Wimberley city	78624	02412278	Hays County	209	5/9/2000	6/20/2001	
49	UT	Apple Valley town	01905	02412373	Washington County	053	12/15/2004	6/13/2006	
49	UT	Bryce Canyon City town	08787	02371448	Garfield County	017	7/23/2007	11/5/2007	

State (FIPS)	State (USPS)	Place Name and Description	Place (FIPS)	Place (ANSI)	County Name(s) in which Place Incorporated	County (FIPS)	Effective Date	Date Reported	Notes and Comments
49	UT	Central Valley town	12260	02413189	Sevier County	041	12/8/2005	6/27/2005	
49	UT	Cottonwood Heights city	16270	02410245	Salt Lake County	035	1/14/2005	6/7/2005	
49	UT	Daniel town	16140	02412045	Wasatch County	051	2/28/2006	7/17/2007	
49	UT	Fairfield town	24410	02412611	Utah County	049	12/28/2004	6/21/2005	
49	UT	Henrieville town	33109	02412723	Wayne County	035	1/6/1999	9/24/2001	Included in corrected counts errata for 2000
49	UT	Hidout town	35120	02516168	Wasatch County	051	7/22/2008	1/6/2009	
49	UT	Hopert city	36400	02410790	Weber County	037	11/30/2000	5/9/2002	
49	UT	Independence town	37990	02547770	Wasatch County	051	6/5/2008	1/6/2009	
53	WA	Liberty Lake city	39335	02410834	Spokane County	063	8/31/2001	8/21/2001	
53	WA	Spokane Valley city	67197	02411937	Spokane County	063	3/31/2003	6/17/2003	
55	WI	Berkshire village	06362	02013446	Brown County	009	2/14/2003	7/9/2003	Incorporation of former Bellevue town (FIPS: 06350)
55	WI	Bristol village	09600	01592217	Kenosha County	059	12/1/2009	12/9/2009	
55	WI	Horbar village	11970	02013446	Brown County	101	11/16/2005	3/20/2006	Incorporation of former Caledonia town (FIPS: 11950)
55	WI	Kronenwetter village	35150	01992655	Marathon County	009	5/13/2003	7/10/2003	Incorporation of former Hobart town (FIPS: 35150)
55	WI	Lake Hall village	40550	02013447	Chippewa County	073	1/16/2003	6/17/2003	Incorporation of former Kronenwetter town (FIPS: 40550)
55	WI	Mount Pleasant village	54755	02013469	Racine County	017	2/18/2003	7/11/2003	Incorporation of former Hallie town (FIPS: 32125)
55	WI	Richfield village	67475	01594022	Washington County	101	9/16/2003	3/18/2004	Incorporation of former Mount Pleasant town (FIPS: 54875)
55	WI	Suamico village	77975	02013446	Brown County	131	2/13/2008	7/31/2008	Incorporation of former Richfield town (FIPS: 67475)
56	WY	Bear River town	05625	02411670	Union County	009	9/8/2003	9/30/2003	Incorporation of former Suamico town (FIPS: 77975)
56	WY	Star Valley Ranch town	73180	02413329	Uninc.	023	3/22/2001	7/27/2001	
							11/8/2005	12/13/2005	

Exhibit C



Search

[Home](#) > [About Us](#) > History

PRINT SHARE RSS

City Maps

Contact City Hall

Employment Opportunities

Event Calendar

History

Links to Other Agencies

Press Releases

Menifee Veterans Memorial

**CITY OF MENIFEE**

29714 Haun Rd.
Menifee, CA 92586
Ph: (951) 672-6777
Fx: (951) 679-3843
Emergency Ph: 9-1-1
Police Non-Emergency Ph:
(951) 776-1099

History**About Menifee**

The City of Menifee is located in southwestern [Riverside County](#) approximately 30 miles southeast of the [City of Riverside, California](#). The City encompasses approximately 50 square miles with an overall population of 80,589.

Interstate 215 traverses north and south through the center of Menifee, with existing community commercial areas located primarily along Newport, Bradley, and McCall Roads off of I-215.

Surrounding Communities

The City of Menifee includes the communities of: Sun City, Quail Valley, and portions of Romoland. The City is generally bordered on the north, west, and south by the cities of:

- [Perris](#)
- [Canyon Lake](#)
- [Lake Elsinore](#)
- [Murrieta](#)
- [Wildomar](#)

To the east and northeast, the City borders unincorporated County territory.

Early Inhabitants

The area was originally inhabited by the Luiseno and Pechanga Indian tribes, and in the 1700s, the area fell under the rule of the Spanish empire. The area was eventually annexed into the United States from Mexico in 1850 under California's statehood.

Farming activity beginning in the mid-1800s was concentrated in the Menifee area. Mining activity began in the early 1880s with the discovery of a significant quartz lode by miner Luther Menifee Wilson. Menifee derived its name from that mining operation.

Early Development

Early development of the City of Menifee began with Sun City in the early 1960s as the concept of an active retirement community that was envisioned by Del Webb, a major building contractor from Phoenix, Arizona. Sun City is centrally located within the City of Menifee with a mix of residential and commercial activity.

The Menifee area began to grow further in 1989 with the master-planned community of Menifee Lakes and continues to be one of the fastest growing communities in California. Quail Valley is a semi-rural residential community in the northwestern section of the City, and Romoland is a residential and commercial community located in the northeastern section of the City.

Schools

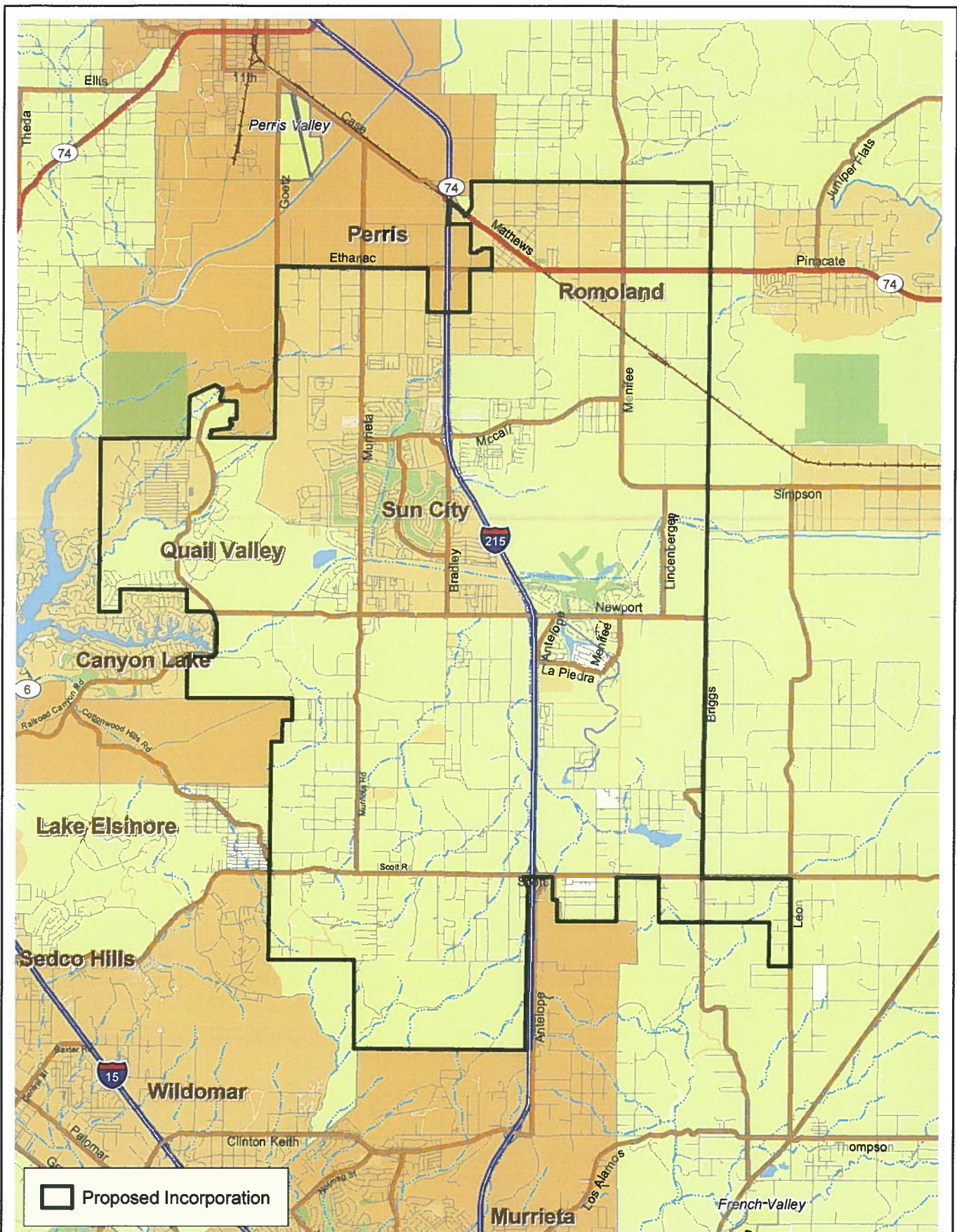
Elementary and middle school education in the City of Menifee are provided by the [Menifee Union School District](#). High school education is provided by the [Perris Union High School District](#). The City of Menifee is also home to [Mount San Jacinto Community College](#). The Menifee campus serves the [Temecula](#), [Murrieta](#), and Menifee area.

Incorporation of the City

On June 3, 2008, the residents of the communities encompassing the City of Menifee voted to incorporate Menifee into Riverside County's twenty-sixth city. The new City of Menifee was officially established on October 1, 2008.


[Home](#) | [Contact Us](#) | [Sitemap](#) | [Translate](#) | [Accessibility](#) | [Disclaimer](#) | [Copyright Notices](#) | [Powered by CivicPlus](#)

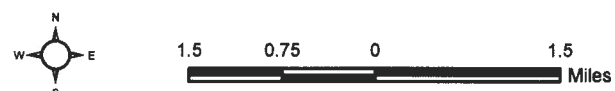
Exhibit D



Local Vicinity/Maximum Proposed Boundary

Exhibit 2

Menifee Valley Incorporation



Bonterra
CONSULTING