

**Barry J. Magrill**

**Modify: BNPFT-20140221ABZ**

**FID 157039**

**Jacksonville, FL.**

**DECEMBER - 2014**

**Technical Statement:**

The attached technical statement and related exhibits are prepared by EME Communications for Barry J. Magrill. The purpose is to modify the construction permit of W258CN to specify a new tower Site, HAGL, HAMSL, HAAT, primary station and effective radiated power (ERP).

Exhibit 1 is an interference study that shows NO interference to any facility present or proposed. The attached studies and related exhibits **employ the FCC 30 sec terrain database**. It is requested that the Commission's staff use the same database when evaluating this proposal. The proposed is also mutually exclusive with the current permit of W258CN.

The proposed is short spaced to 2nd adjacent WQIK-FM, Jacksonville, FL and WGNE-FM, Middleburg, FL.; therefore a "Living Way" waiver of 74.1204 (d) is requested. Attached is a showing that shows utilizing a composite pattern consisting of two (2) Scala CA2-FM-2 antennas (FCC antenna # 44476) and with the proposed ERP and HAGL, the interfering contour will not reach ground level. Also attached is a Google Earth picture that shows the interfering contour for both WQIK-FM and WGNE-FM lacks any population.

This proposal will re-broadcast FM facility WOKV-FM (FID 48728) licensed to Atlantic Beach, FL.

Proposed Tower:

Tower ID: 1016457

Coordinates (NAD27): 30-16-35.13 N, 081-33-57.67 W

Status: Constructed

Action Date: 12/03/2012

Construction Date: 07/01/1988

Location: NEWTON @ HOGAN RD, JACKSONVILLE, FL

Height (AG): 305.30 m, Elevation: 7.90 m, Structure Height: 289.80 m

Circular Number: 70/7460-1G

FAA Number: 88-ASO-1533-OE    FAA Chapter: 3, 4, 5, 9

Owner: Cox Television Jacksonville, LLC

**Conclusion:**

Barry J. Magrill. Proposes to modify the above mentioned construction permit to specify antenna site, ERP and re-broadcast WOKV-FM, Atlantic Beach, FL. It is believed this statement and attached exhibits should pass muster with the Commission's staff and therefore be granted.

Clyde Scott, Jr.  
EME Communications

Barry J Magrill

REFERENCE 30 16 35.0 N. 81 33 58.0 W.	CH# 258D - 99.5 MHz, Pwr= 0.21 kw DA, HAAT= 270.3 M, COR= 282 M Average Protected F(50-50)= 20.57 km Standard Directional	DISPLAY DATES DATA 12-19-14 SEARCH 12-19-14
---	---	---

CH CITY	CALL	TYPE STATE	ANT AZI <--	DIST FILE #	LAT LNG	PWR(kw) HAAT(M)	INT(km) COR(M)	PRO(km) LICENSEE	*IN* (Overlap in km)	*OUT*
258D W258CN Jacksonville	CP DC_	FL	99.3 279.3	0.18 BMPFT20140221ABZ	30 16 34.0 81 33 51.0	0.235	60.3 274	19.4 Barry J Magrill	-79.3*	-78.9*
256C0 WQIK-FM Jacksonville	LIC _CX	FL	321.0 141.0	0.63 BMLH20120611ABN	30 16 51.0 81 34 13.0	100.000 302	10.1 308	72.2 Citicasters Licenses, Inc.	-20.2*<	-71.9*<
260C1 WGNE-FM Middleburg	LIC NCX	FL	305.0 125.0	8.98 BLH20050516ACS	30 19 22.0 81 38 34.0	48.000 300	8.3 304	64.9 Renda Broadcasting Corp. 0	-13.5*<	-56.4*<
258D W258BF St. Augustine	LIC _C_	FL	157.0 337.1	43.27 BLFT20130924AAZ	29 55 05.0 81 23 26.0	0.200 119	44.5 125	13.0 Wsos Radio Llc	-9.1*<	3.6
258A WGMW La Crosse	LIC NCN	FL	233.1 52.7	98.95 BLH19990311KB	29 44 22.0 82 23 09.0	2.200 144	77.8 181	26.1 Rda Broadcast Holdings, L1	0.9	10.5
204C3 WJFR Jacksonville	LIC _CX	FL	295.2 115.1	13.66 BMLED20131118BBF	30 19 43.0 81 41 42.0	8.000 107	12.8 113	2.3 Family Stations Inc	12.0R	1.7M
258D W258AT St. Marys	LIC _C_	GA	349.6 169.5	59.32 BLFT20140806AFY	30 48 04.0 81 40 43.0	0.250	40.9 89	11.9 Satilla Broadcast Properti	8.7	15.2
258C1 WAAA Willacoochee	LIC NCX	GA	300.5 119.6	198.72 BLH20080122APF	31 10 18.0 83 21 57.0	73.000 230	157.7 302	63.7 Southern Communications, L	25.8	84.7
258D W258BX St. Simons	CP _C_	GA	9.0 189.1	100.18 BNPFT20130326AIA	31 09 59.0 81 24 07.0	0.080 32	18.3 33	5.6 Radio Training Network, In	67.1	45.6
258A WLOV-FM Daytona Beach Shore	LIC NCX	FL	157.5 337.7	125.04 BLH20120409ABX	29 14 11.0 81 04 22.0	2.200 104	71.2 107	22.5 Susan Hall	45.9	75.8

Terrain database is FCC NGDC 30 Sec , R= 73.215 qualifying spacings or FCC minimum Spacings in KM, M= Margin in KM  
Contour distances are on direct line to and from reference station. Reference zone= East Zone, Co to 3rd adjacent.  
Call signs with strikeout need not be protected.  
Ant Column: (D= DA Standard, Z= DA 73.215, N= Not DA 73.215, \_= Omni), Polarization (C,H,V,E), Beamtilt(Y,N,X)  
"\*"affixed to 'IN' or 'OUT' values = site inside restricted contour.

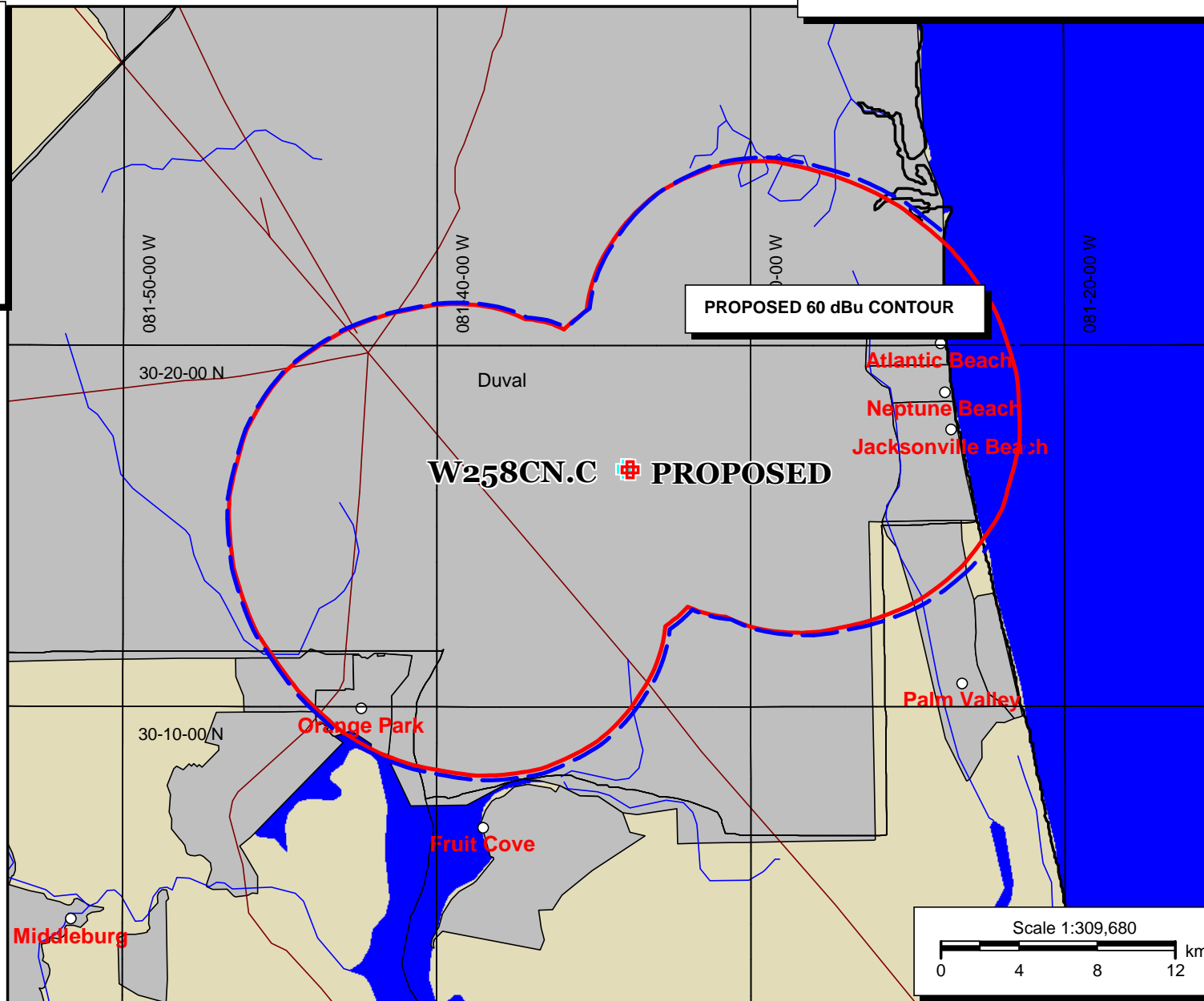
**EME Communications - Moultrie, GA.**

**PROPOSED**

Latitude: 30-16-35 N  
Longitude: 081-33-58 W  
ERP: 0.21 kW  
Channel: 258  
Frequency: 99.5 MHz  
AMSL Height: 282.0 m  
Elevation: 12.72 m  
Horiz. Pattern: Directional  
Vert. Pattern: No  
Prop Model: None

**60 dBu COVERAGE**

BLUE = CP  
RED = PROPOSED



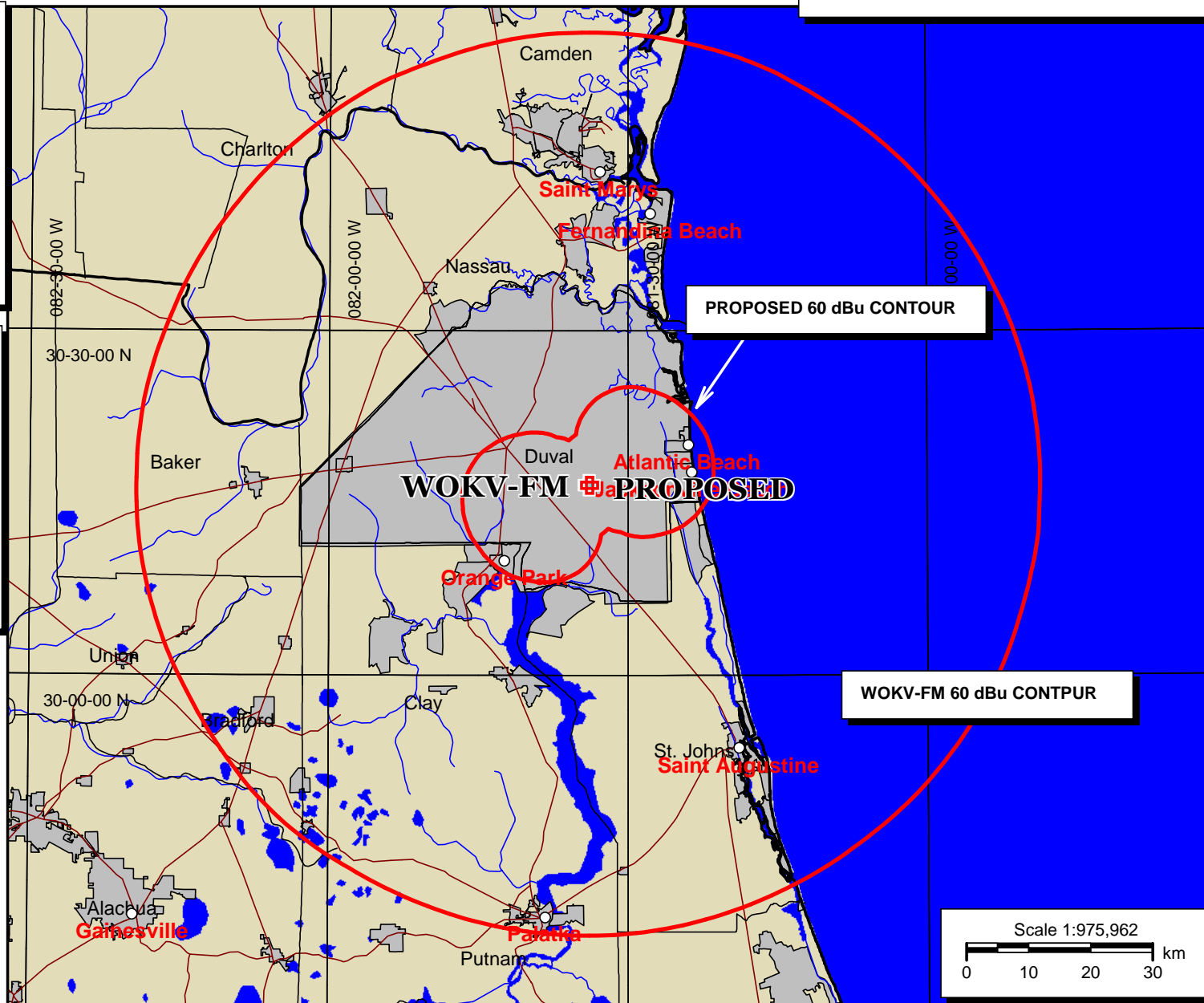
EME Communications - Moultrie, GA.

**PROPOSED**

Latitude: 30-16-35 N  
Longitude: 081-33-58 W  
ERP: 0.21 kW  
Channel: 258  
Frequency: 99.5 MHz  
AMSL Height: 282.0 m  
Elevation: 12.72 m  
Horiz. Pattern: Directional  
Vert. Pattern: No  
Prop Model: None

**WOKV-FM**

BMLH20130124AB1  
Latitude: 30-16-34 N  
Longitude: 081-33-53 W  
ERP: 100.00 kW  
Channel: 283  
Frequency: 104.5 MHz  
AMSL Height: 315.0 m  
Elevation: 9.0 m  
Horiz. Pattern: Omni  
Vert. Pattern: No  
Prop Model: None



XField.out

W258CN.C JACKSONVILLE, FL.

74.1204(d) Showing

Translator or LPFM Maximum Licensed ERP = 0.21

Translator or LPFM Antenna Height AG = 274 Meters

W258CN.C Antenna Model = CA2-FM\_CP\_50-N

Protected Station's Contour = 98.71213 dBu

Translator's or LPFM's full Interference contour 138.71213

Review Azimuth = 0 Degrees True

Relative Field on the horizon at Review Azimuth = 0.375

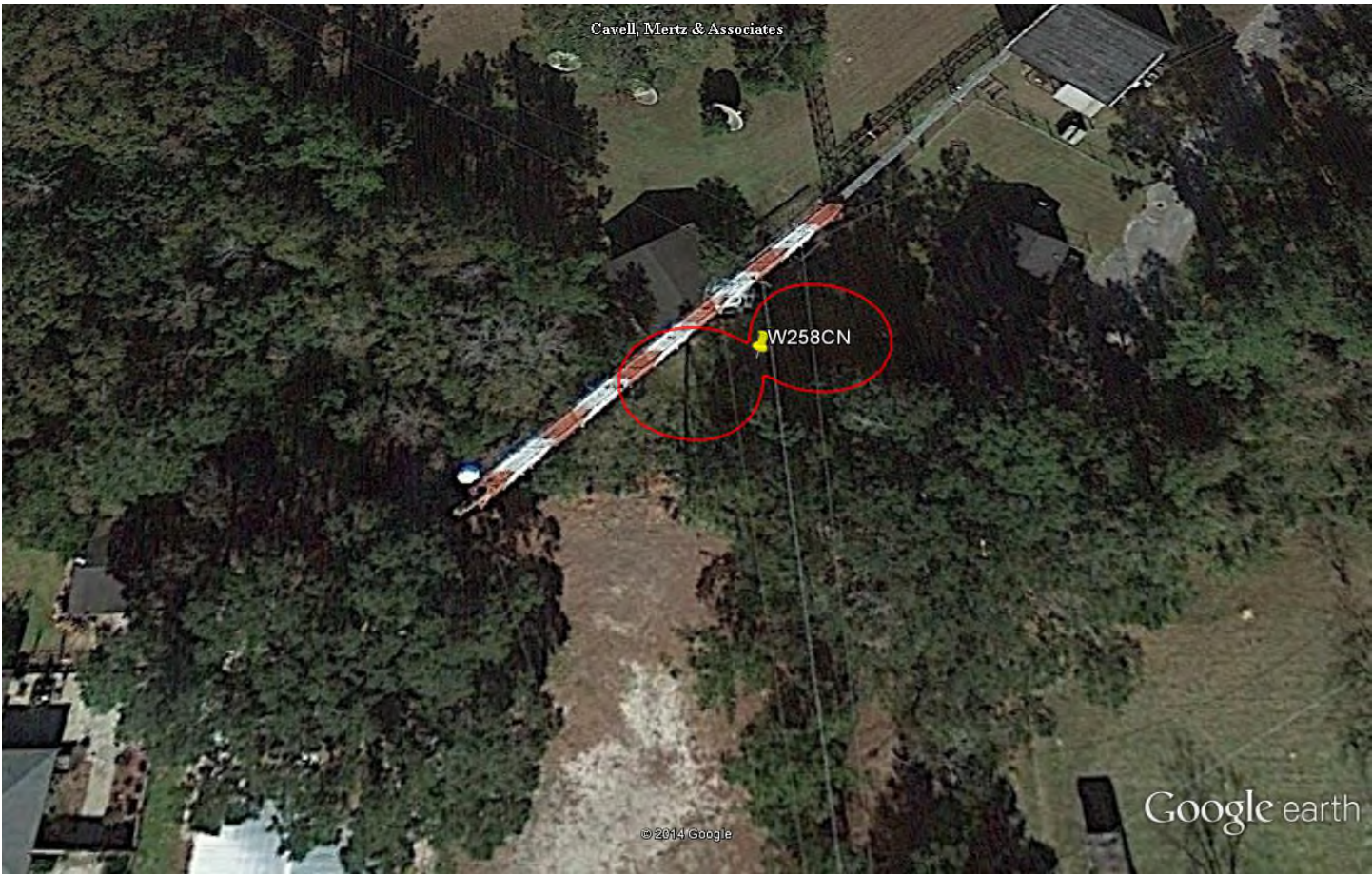
Translator/LPFM ERP on the horizon at Review Azimuth = 0.03 kw

Distance between stations = 9.0 km

Protected Station= WGNE-F, 48 kw, 304 M Meters COR AMSL

Depression Angle From Horizon(Deg)	Vertical Relative Field	Horizontal Relative Field	ERP (kw)	Dist to IX Contour Along Dep. Angle(m)	Dist to IX Contour From Tower Base(m)	Height IX Above Ground (m)
00.00	1.0	0.38	0.0788	007.2197	007.2197	274.000
05.00	0.99	0.38	0.0772	007.1475	007.1203	273.377
10.00	0.978	0.38	0.0752	007.0573	006.9500	272.775
15.00	0.958	0.38	0.0722	006.9129	006.6773	272.211
20.00	0.915	0.38	0.0659	006.6060	006.2076	271.741
25.00	0.865	0.38	0.0589	006.2450	005.6599	271.361
30.00	0.808	0.38	0.0513	005.8299	005.0488	271.085
35.00	0.745	0.38	0.0437	005.3787	004.4060	270.915
40.00	0.675	0.38	0.0359	004.8733	003.7332	270.868
45.00	0.595	0.38	0.0279	004.2957	003.0375	270.962
50.00	0.51	0.38	0.0205	003.6820	002.3668	271.179
55.00	0.43	0.38	0.0146	003.1045	001.7806	271.457
60.00	0.345	0.38	0.0094	002.4908	001.2454	271.843
65.00	0.265	0.38	0.0055	001.9132	000.8086	272.266
70.00	0.19	0.38	0.0028	001.3717	000.4692	272.711
75.00	0.125	0.38	0.0012	000.9025	000.2336	273.128
80.00	0.075	0.38	0.0004	000.5415	000.0940	273.467
85.00	0.055	0.38	0.0002	000.3971	000.0346	273.604
90.00	0.05	0.38	0.0002	000.3610	000.0000	273.639

X-Field™ By V-Soft Communications®LLC



Google earth

feet 100  
meters 40



XField.out

W258CN.C JACKSONVILLE, FL.

74.1204(d) Showing

Translator or LPFM Maximum Licensed ERP = 0.21

Translator or LPFM Antenna Height AG = 274 Meters

W258CN.C Antenna Model = CA2-FM-CP-50-N

Protected Station's Contour = 130.8529 dBu

Translator's or LPFM's full Interference contour 170.8529

Review Azimuth = 0 Degrees True

Relative Field on the horizon at Review Azimuth = 0.375

Translator/LPFM ERP on the horizon at Review Azimuth = 0.03 kw

Distance between stations = 0.6 km

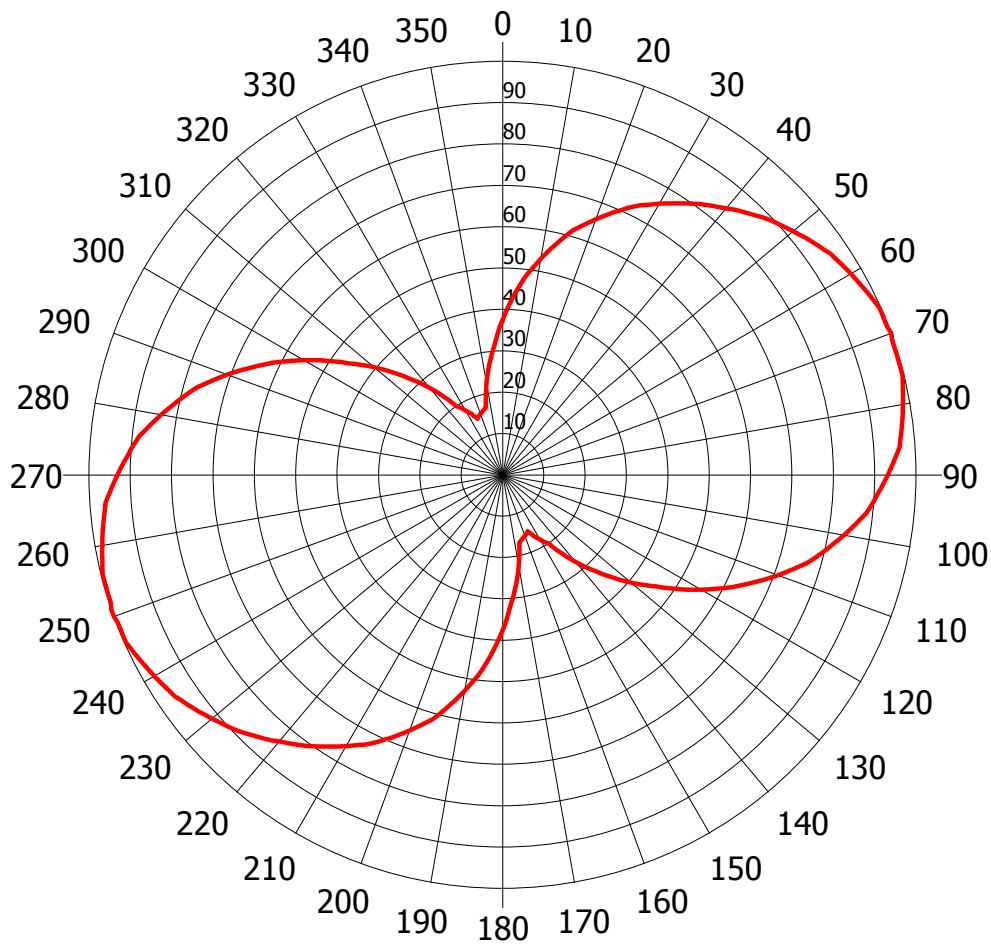
Protected Station= WQIK-F, 100 kw, 308 M Meters COR AMSL

Depression Angle From Horizon(Deg)	Vertical Relative Field	Horizontal Relative Field	ERP (kw)	Dist to IX Contour Along Dep. Angle(m)	Dist to IX Contour From Tower Base(m)	Height IX Above Ground (m)
00.00	1.0	0.38	0.0788	000.1784	000.1784	274.000
05.00	0.99	0.38	0.0772	000.1767	000.1760	273.985
10.00	0.978	0.38	0.0752	000.1744	000.1718	273.970
15.00	0.958	0.38	0.0722	000.1709	000.1650	273.956
20.00	0.915	0.38	0.0659	000.1633	000.1534	273.944
25.00	0.865	0.38	0.0589	000.1543	000.1399	273.935
30.00	0.808	0.38	0.0513	000.1441	000.1248	273.928
35.00	0.745	0.38	0.0437	000.1329	000.1089	273.924
40.00	0.675	0.38	0.0359	000.1204	000.0923	273.923
45.00	0.595	0.38	0.0279	000.1062	000.0751	273.925
50.00	0.51	0.38	0.0205	000.0910	000.0585	273.930
55.00	0.43	0.38	0.0146	000.0767	000.0440	273.937
60.00	0.345	0.38	0.0094	000.0616	000.0308	273.947
65.00	0.265	0.38	0.0055	000.0473	000.0200	273.957
70.00	0.19	0.38	0.0028	000.0339	000.0116	273.968
75.00	0.125	0.38	0.0012	000.0223	000.0058	273.978
80.00	0.075	0.38	0.0004	000.0134	000.0023	273.987
85.00	0.055	0.38	0.0002	000.0098	000.0009	273.990
90.00	0.05	0.38	0.0002	000.0089	000.0000	273.991

X-Field™ By V-Soft Communications®LLC







Azi	Rel	dBk	kW	dB	Azi	Rel	dBk	kW	dB
0	0.375	-15.10	0.031	-8.52	180	0.375	-15.10	0.031	-8.52
10	0.530	-12.09	0.062	-5.51	190	0.530	-12.09	0.062	-5.51
20	0.657	-10.22	0.095	-3.65	200	0.657	-10.22	0.095	-3.65
30	0.757	-8.99	0.126	-2.42	210	0.757	-8.99	0.126	-2.42
40	0.841	-8.08	0.156	-1.50	220	0.841	-8.08	0.156	-1.50
50	0.916	-7.34	0.185	-0.76	230	0.916	-7.34	0.185	-0.76
60	0.972	-6.82	0.208	-0.25	240	0.972	-6.82	0.208	-0.25
70	1.000	-6.58	0.220	0.00	250	1.000	-6.58	0.220	0.00
80	0.982	-6.73	0.212	-0.16	260	0.982	-6.73	0.212	-0.16
90	0.931	-7.20	0.191	-0.62	270	0.931	-7.20	0.191	-0.62
100	0.838	-8.11	0.154	-1.54	280	0.838	-8.11	0.154	-1.54
110	0.708	-9.58	0.110	-3.00	290	0.708	-9.58	0.110	-3.00
120	0.554	-11.71	0.068	-5.13	300	0.554	-11.71	0.068	-5.13
130	0.405	-14.43	0.036	-7.85	310	0.405	-14.43	0.036	-7.85
140	0.274	-17.82	0.017	-11.24	320	0.274	-17.82	0.017	-11.24
150	0.180	-21.47	0.007	-14.89	330	0.180	-21.47	0.007	-14.89
160	0.157	-22.66	0.005	-16.08	340	0.157	-22.66	0.005	-16.08
170	0.224	-19.57	0.011	-13.00	350	0.224	-19.57	0.011	-13.00

Rotation Angle = 0