

[HOME](#) [LODGING](#) [DINING](#) [ATTRACTIONS](#) [STATE & NATIONAL PARKS](#) [WILD ADVENTURE](#) [MILD A](#)

enter your keywords

[ARTS & ENTERTAINMENT](#)  
[CALENDAR OF EVENTS](#)  
[CAMPING/RV](#)  
[COMMUNITY LINKS](#)  
[CONTACT US](#)  
[E-NEWSLETTER SIGN UP](#)  
[FILM COMMISSION](#)  
[HISTORIC TOWNS](#)  
[MAPS & DIRECTIONS](#)  
[MEETINGS & CONFERENCES](#)  
[MEMBER LOGIN](#)  
[REGIONAL LODGING](#)  
[SERVICES](#)  
[SHOP OUR STORE](#)  
[SHOPPING](#)  
[SPECIALS & PACKAGES](#)  
[TCVB MEMBERSHIP](#)  
[TRAVEL TRADE & MEDIA](#)  
[TUOLUMNE COUNTY FACTS](#)  
[WEDDINGS](#)  
[WEB LINKS](#)

## STOVE, SPA, POOL & WATER WORKS



Location: 5 miles passed Sonora at Rancho Poquitos

16010 Via Este  
Sonora, CA 95370  
(209) 532-7724

Fax: (209) 532-7746

<http://www.stove-spa-poolworks.com>  
[SHOW ME A MAP OF THIS LOCATION](#)  
[SEND EMAIL](#)

Biggest choice of stove, pools, and spas in two counties. We install what we sell. Water treatment systems remove iron, hardness, odors. Parts, chemicals, accessories for spas, pools, saunas, steam rooms. Stoves and fireplaces for wood, propane, pellet, or fuel oil.

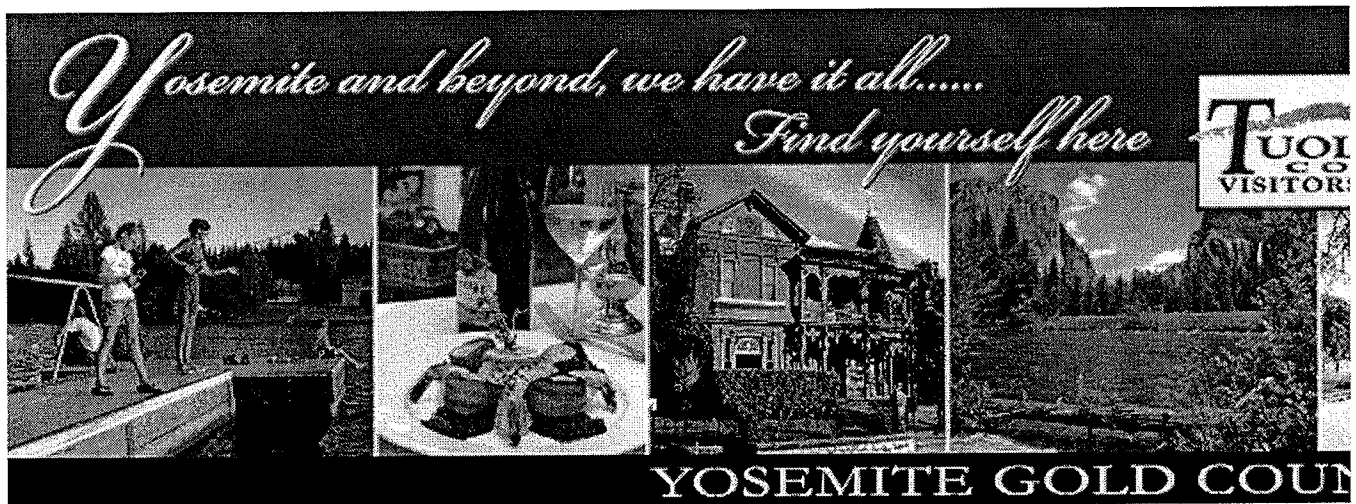
Help with do-it-yourself repairs.

[Back](#)

Nearby Event:

Plant Sale "Nativ

[VIEW ALL EVENT](#)



HOME LODGING DINING ATTRACTIONS STATE & NATIONAL PARKS WILD ADVENTURE MILD A

enter your keywords

Search Site

ARTS & ENTERTAINMENT  
CALENDAR OF EVENTS  
CAMPING/RV  
COMMUNITY LINKS  
CONTACT US  
E-NEWSLETTER SIGN UP  
FILM COMMISSION  
HISTORIC TOWNS  
MAPS & DIRECTIONS  
MEETINGS &  
CONFERENCES  
MEMBER LOGIN  
REGIONAL LODGING  
SERVICES  
SHOP OUR STORE  
SHOPPING  
SPECIALS & PACKAGES  
TCVB MEMBERSHIP  
TRAVEL TRADE & MEDIA  
TUOLUMNE COUNTY  
FACTS  
WEDDINGS  
WEB LINKS

## SUGAR PINE REALTY



19520 Hillsdale Dr.  
Sonora, CA 95370  
(209) 533-4242

Fax: (209) 588-9464

<http://www.sugarpinerealty.com/>  
SHOW ME A MAP OF THIS LOCATION  
SEND EMAIL

At Sugar Pine Realty/GMAC Real Estate we are continually striving to provide the most powerful and easy to use home finding tools. My Home Finder makes it much easier for you to sign up and find your next home exclusively through sugarpinerealty.com!

Sellers, would you like to know the probable buyer value range of homes that might compete with yours? Our system gives you a real-time picture of buyer activity on our site within your zip code.

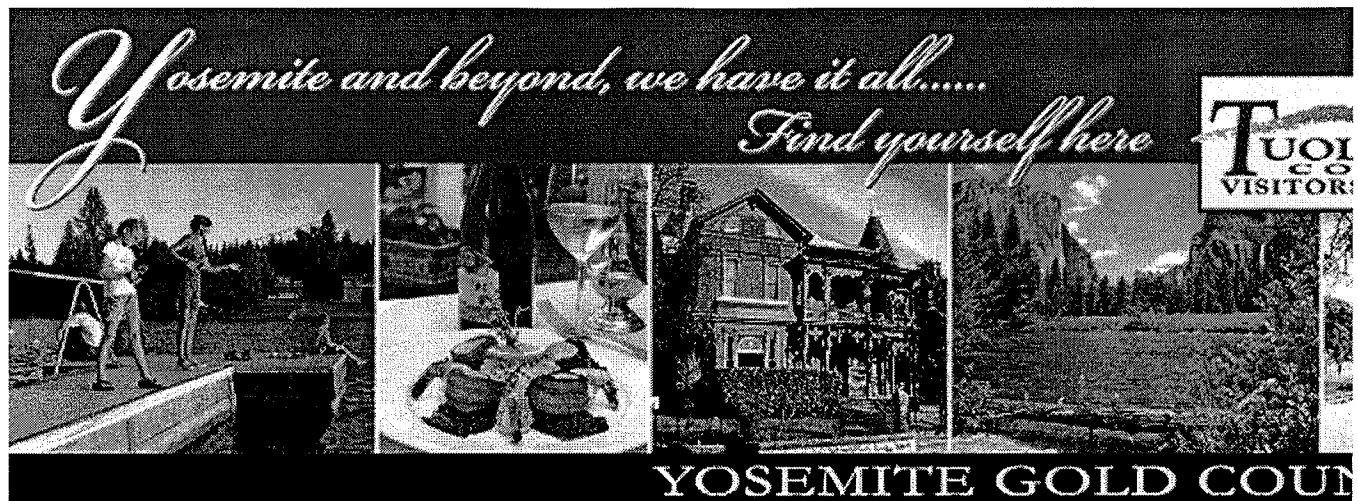
[Back](#)



## Nearby Event:

Theatre: Fallon &  
Best Little Whore

[VIEW ALL EVENTS](#)



[HOME](#) [LODGING](#) [DINING](#) [ATTRACTIONS](#) [STATE & NATIONAL PARKS](#) [WILD ADVENTURE](#) [MILD ADVENTURE](#)

enter your keywords

[ARTS & ENTERTAINMENT](#)

[CALENDAR OF EVENTS](#)

[CAMPING/RV](#)

[COMMUNITY LINKS](#)

[CONTACT US](#)

[E-NEWSLETTER SIGN UP](#)

[FILM COMMISSION](#)

[HISTORIC TOWNS](#)

[MAPS & DIRECTIONS](#)

[MEETINGS &  
CONFERENCES](#)

[MEMBER LOGIN](#)

[REGIONAL LODGING](#)

[SERVICES](#)

[SHOP OUR STORE](#)

[SHOPPING](#)

[SPECIALS & PACKAGES](#)

[TCVB MEMBERSHIP](#)

[TRAVEL TRADE & MEDIA](#)

[TUOLUMNE COUNTY  
FACTS](#)

[WEDDINGS](#)

[WEB LINKS](#)

## THE PEPPERY GAR & BRILL

Hours: open daily

13299 Mono Way  
Sonora, CA 95370  
(209) 533-9033

### SHOW ME A MAP OF THIS LOCATION

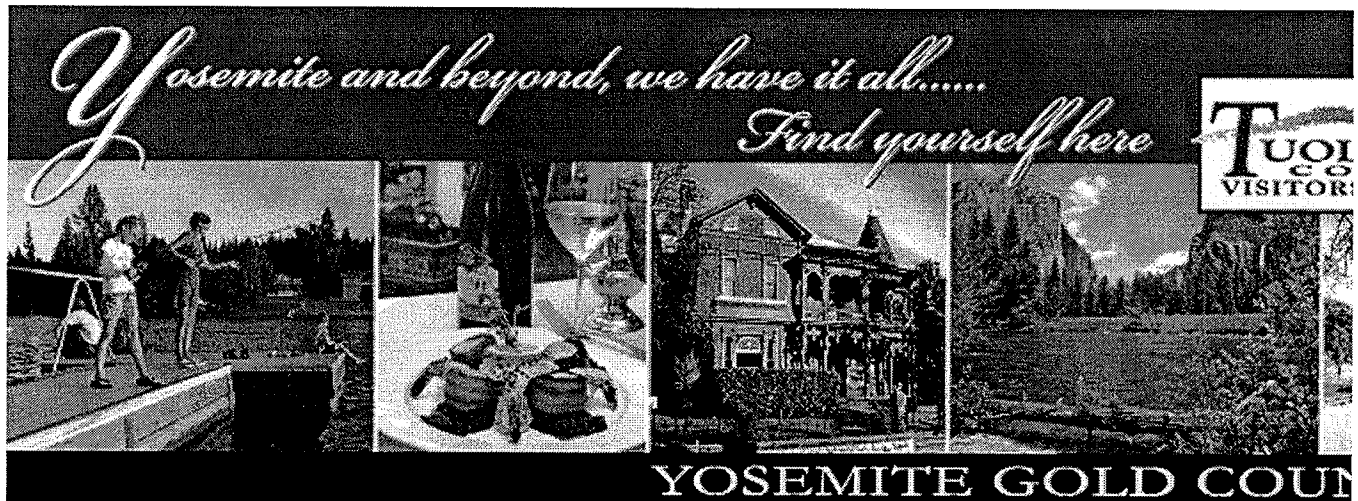
The menu comes alive with flavor and zest. Wide selection of appetizers, salads, sandwiches, pasta, and dinners served the Peppery way. Onion strings, pepperjack poppers, chicken cobb salad, seafood linguine, baby back ribs and fresh salmon. Fourteen beers all on tap.

[Back](#)

### Nearby Event:

Theatre: Fallon F-  
Best Little Whore

[VIEW ALL EVENT](#)



[HOME](#) [LODGING](#) [DINING](#) [ATTRACTIONS](#) [STATE & NATIONAL PARKS](#) [WILD ADVENTURE](#) [MILD A](#)

enter your keywords

## COMMUNITY LINKS

No Records to Display.

[SEARCH COMM](#)  
[Community Link:](#)

[All Types](#)

[Region:](#)

[Sonora - East](#)

☐ [Quicklist](#)

[Printable List](#)

Photo Credits: Bla  
Groveland Hotel, f  
Eproson House

[ARTS & ENTERTAINMENT](#)

[CALENDAR OF EVENTS](#)

[CAMPING/RV](#)

[COMMUNITY LINKS](#)

[CONTACT US](#)

[E-NEWSLETTER SIGN UP](#)

[FILM COMMISSION](#)

[HISTORIC TOWNS](#)

[MAPS & DIRECTIONS](#)

[MEETINGS &  
CONFERENCES](#)

[MEMBER LOGIN](#)

[REGIONAL LODGING](#)

[SERVICES](#)

[SHOP OUR STORE](#)

[SHOPPING](#)

[SPECIALS & PACKAGES](#)

[TCVB MEMBERSHIP](#)

[TRAVEL TRADE & MEDIA](#)

[TUOLUMNE COUNTY  
FACTS](#)

[WEDDINGS](#)

[WEB LINKS](#)

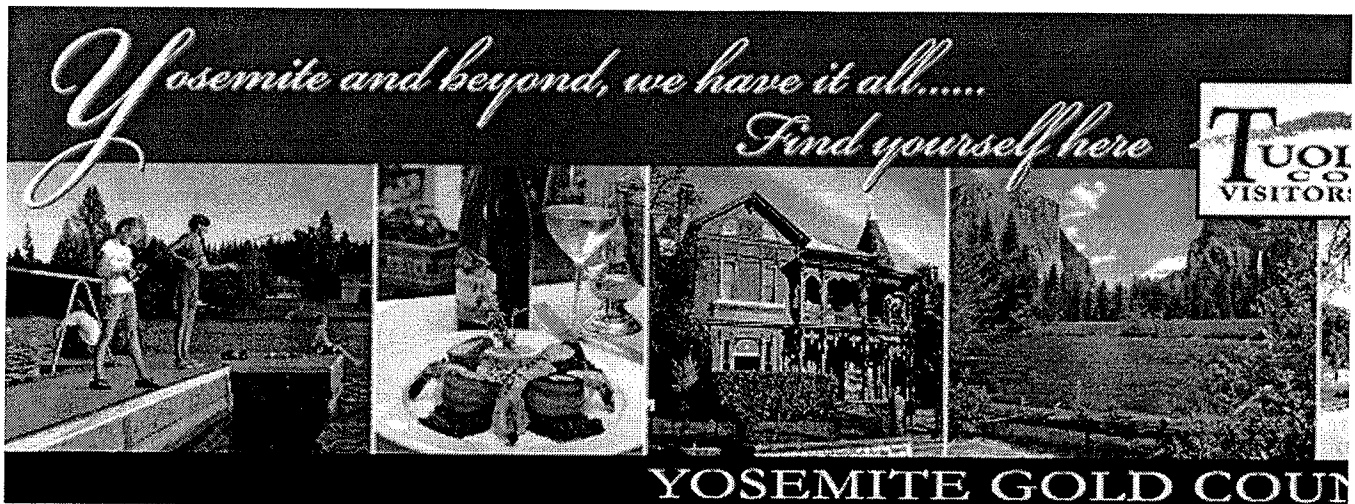
### Hot Happenings:

Jazz Series - Columbia

College ~ Season Finale

Monthly Columbia Jazz

Series Concerts are held at  
the College Dogwood



HOME LODGING DINING ATTRACTIONS STATE & NATIONAL PARKS WILD ADVENTURE MILD A

enter your keywords

Search Site

ARTS & ENTERTAINMENT  
CALENDAR OF EVENTS  
CAMPING/RV  
COMMUNITY LINKS  
CONTACT US  
E-NEWSLETTER SIGN UP  
FILM COMMISSION  
HISTORIC TOWNS  
MAPS & DIRECTIONS  
MEETINGS & CONFERENCES  
MEMBER LOGIN  
REGIONAL LODGING  
SERVICES  
SHOP OUR STORE  
SHOPPING  
SPECIALS & PACKAGES  
TCVB MEMBERSHIP  
TRAVEL TRADE & MEDIA  
TUOLUMNE COUNTY FACTS  
WEDDINGS  
WEB LINKS

#### Hot Happenings:

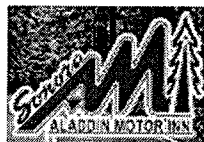
One Love One World Music & Cultural Festivals  
Two days of music and culture representing nations

## LODGING

### SEARCH RESULTS:

#### SONORA - EAST

##### Aladdin Motor Inn



AAA rated. Rooms have refrigerators and guest laundry. Ideal for sightseeing and recreation. Continental breakfast provided.  
[View Details](#)



##### Best Western Sonora Oaks Hotel & Conference Center



Nestled under ancient arbors in the historic Mother Lode area of the Sierra Foothills lies the Best Western Sonora Oaks, hotel and conference center.  
[View Details](#)



##### The Edelweis Guest Cottage



Edelweis Guest Cottage is a premier weekend escape to elegant & private accommodations for you and your group.  
[View Details](#)

##### Sparks Ranch Resort



Sparks Ranch Resort sets the stage for your ultimate experience, be it a two day getaway, an outdoor wedding, a small conference or a private poolside party.  
[View Details](#)

### SEARCH LODG

Lodging Type:

All Types

Region:

Sonora - East

☐ Pets Welcor

☐ Quicklist

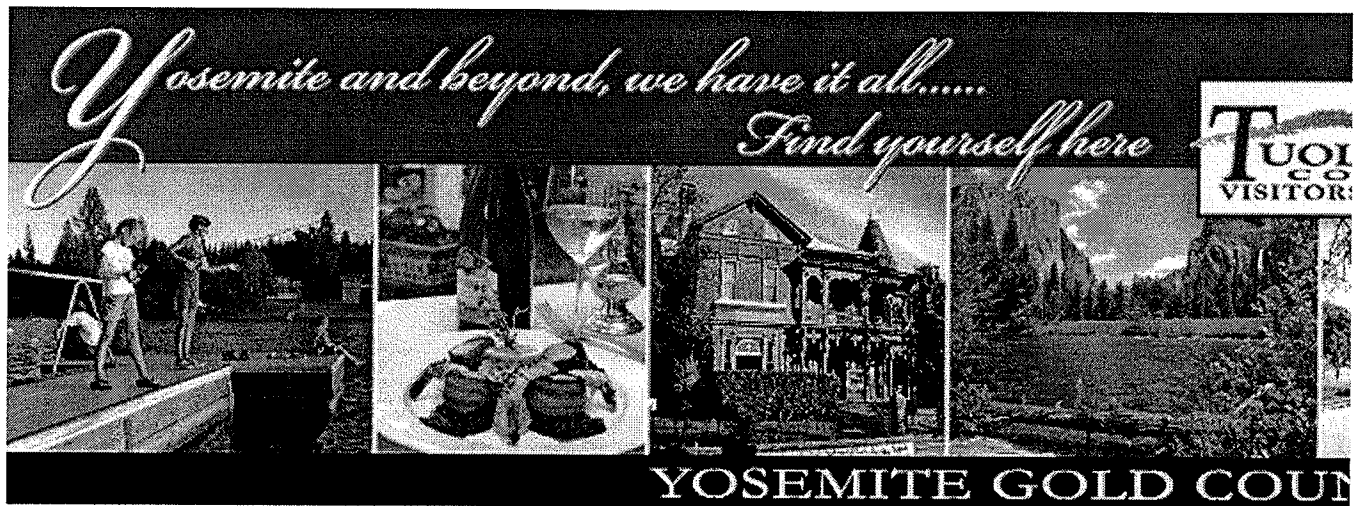
[Printable List](#)

### SPONSORS:



TCVB Sp  
Twain Harte Vac  
25% discount off  
9/15/06 - 12/8/06  
3/15/07 - 6/15/07

Photo Credits: Stra  
Groveland Hotel, M  
Hotel



HOME LODGING DINING ATTRACTIONS STATE & NATIONAL PARKS WILD ADVENTURE MILD A

enter your keywords

Search Site

**ARTS & ENTERTAINMENT**

CALENDAR OF EVENTS

CAMPING/RV

COMMUNITY LINKS

CONTACT US

E-NEWSLETTER SIGN UP

FILM COMMISSION

HISTORIC TOWNS

MAPS & DIRECTIONS

MEETINGS &  
CONFERENCES

MEMBER LOGIN

REGIONAL LODGING  
SERVICES

SHOP OUR STORE

SHOPPING

SPECIALS & PACKAGES

TCVB MEMBERSHIP

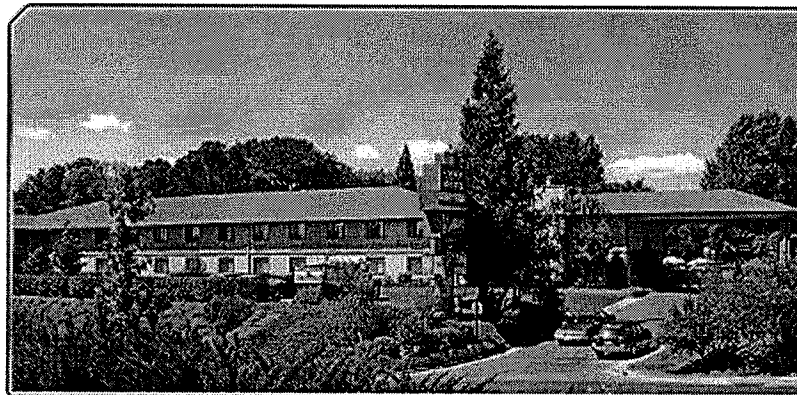
TRAVEL TRADE & MEDIA

TUOLUMNE COUNTY  
FACTS

WEDDINGS

WEB LINKS

**ALADDIN MOTOR INN**



Accepted Cards: Visa/MC/Discover/AmEx/Diners

Location: 3 miles east of Sonora adjacent to the East Sonora Conference & Banquet Center

14260 Mono Way  
Sonora, CA 95370  
(209) 533-4971  
(800) 696-3969  
Fax: (209) 532-1522

<http://aladdininn.com/>  
**SHOW ME A MAP OF THIS LOCATION**  
**SEND EMAIL**

We are located in the heart of California's famous Gold Country. Whether your visit is for business or pleasure, you'll find a special welcome at the Sonora Aladdin Motor Inn. There is plenty to do with Yosemite National Park, alpine skiing, live theatre, and the historic Gold Country all at our backdoor.

AAA rated. Rooms have refrigerators and guest laundry. Ideal for sightseeing and recreation. Continental breakfast provided.

The East Sonora Conference and Banquet Center is adjacent to the Aladdin.

**Nearby Event:**

Theatre: Sierra F  
"Moonlight and M

**VIEW ALL EVEN**



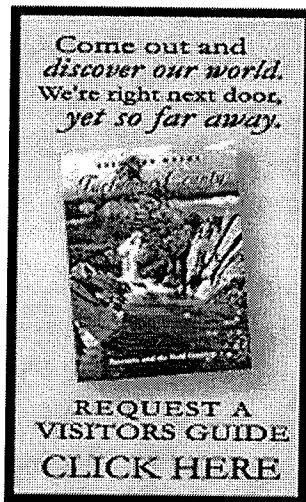


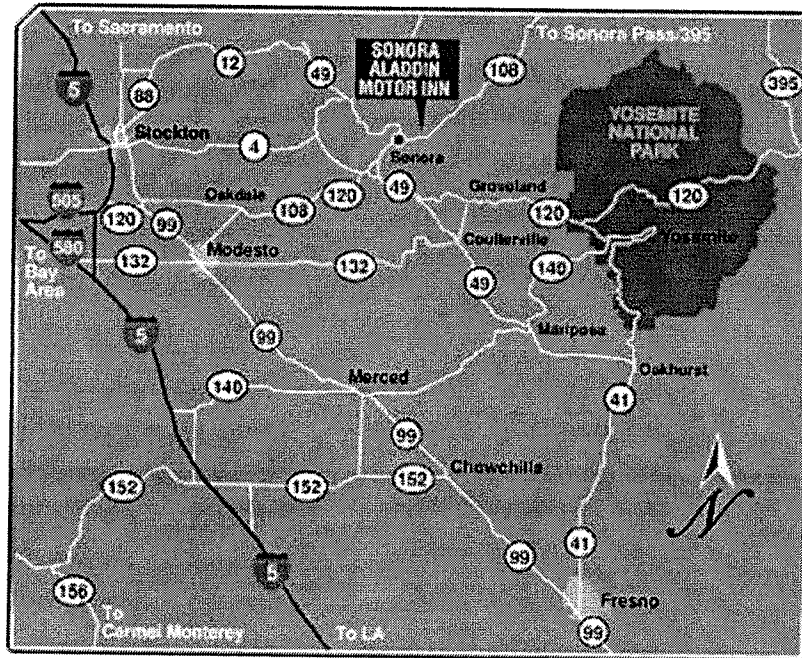
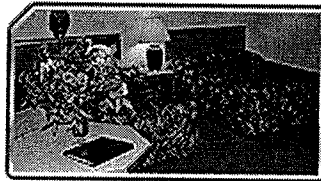
Photo Credits This Page Top:  
Terri Metz, Groveland Hotel,  
Historic Morgan Mansion, Terri  
Metz, Railtown

Visitors worldwide enjoy the warm hospitality of our staff and affordable comfort of our spacious rooms. We look forward to your visit.

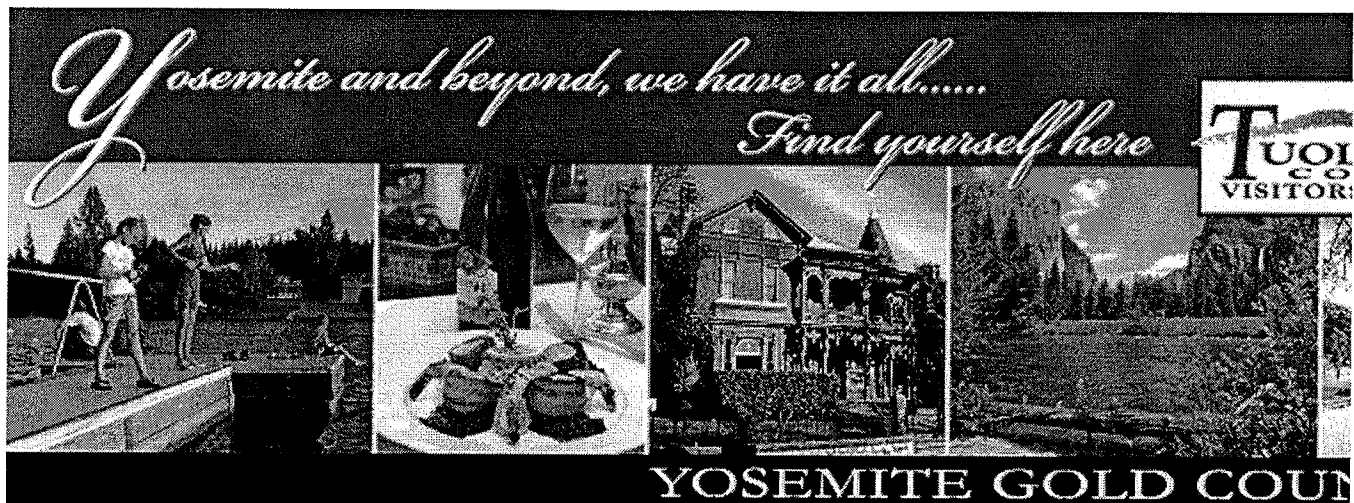
Directions:  
From San Francisco:

Driving to the Aladdin Inn from the San Francisco Bay Area typically takes about 2 1/2 hours  
Take I-80 East, towards Oakland  
Merge onto I-580 East towards CA-24/Downtown Oakland/Hayward-Stockton  
Take I-205 East toward Tracy/Stockton  
Merge onto I-5 North  
Merge onto CA-120 East toward Manteca/Sonora  
Take the CA-120 East/Yosemite Avenue exit towards Sonora  
Turn Right onto East Yosemite Avenue/CA-120 and continue to follow CA-120  
Turn Left onto CA-108 East/CA-120 East. Continue to follow CA-108 East  
Take the Hess Avenue exit  
Turn Right onto Hess Avenue  
Turn Left onto Mono Way  
Look for our large sign on the left side of Mono Way

Back



OFFICIAL WEBSITE OF THE TUOLUMNE COUNTY VISITORS BUREAU  
542 W. Stockton Rd, P.O. Box 4020 Sonora CA 95370  
Phone: 209-533-4420, Toll-Free: 800-446-1333, Fax: 209-533-0956, Email: [tcvbinfo@mlod](mailto:tcvbinfo@mlod)



HOME LODGING DINING ATTRACTIONS STATE & NATIONAL PARKS WILD ADVENTURE MILD A

enter your keywords

Search Site

ARTS & ENTERTAINMENT  
CALENDAR OF EVENTS  
CAMPING/RV  
COMMUNITY LINKS  
CONTACT US  
E-NEWSLETTER SIGN UP  
FILM COMMISSION  
HISTORIC TOWNS  
MAPS & DIRECTIONS  
MEETINGS &  
CONFERENCES  
MEMBER LOGIN  
REGIONAL LODGING  
SERVICES  
SHOP OUR STORE  
SHOPPING  
SPECIALS & PACKAGES  
TCVB MEMBERSHIP  
TRAVEL TRADE & MEDIA  
TUOLUMNE COUNTY  
FACTS  
WEDDINGS  
WEB LINKS

### BEST WESTERN SONORA OAKS HOTEL & CONFERENCE CENTER



Cost: \$79 - \$129  
Accepted Cards: Visa/MC/Amx  
Rooms: 109  
Location: Just off Hwy 108 bypass at Hess Ave. and Mono Way

19551 Hess Avenue  
Sonora, CA 95370  
(209) 533-4400  
(800) 532-1944  
Fax: (209) 532-1964

<http://www.bwsonoraos.com>  
SHOW ME A MAP OF THIS LOCATION  
SEND EMAIL

Nestled under ancient arbors in the historic Mother Lode area of the Sierra Foothills lies the Best Western Sonora Oaks. Comfortable and relaxing, the Best Western Sonora Oaks is certainly the finest and one of the newest inns in the area. In addition to the spacious and tastefully

### CURRENT SP

Three Day Week  
Stay Friday-Satu  
receive Thursday  
50% off. A great  
mini-vacation in t  
country. Call for  
800-532-1944. B  
Sonora Oaks Ho

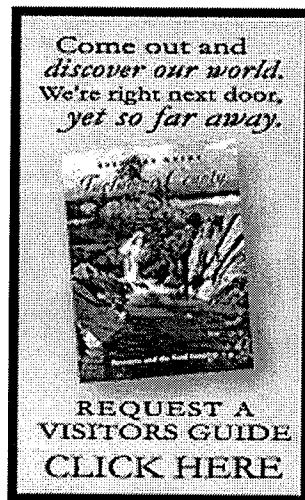
Free Yosemite A  
Package - Stay t  
nights and receiv  
admission to Yos  
National Park. C  
details 1-800-532  
Western Sonora

### Nearby Event:

Theatre: Sierra R  
Theatre "Moonlig  
Magnolias"

VIEW ALL EVENT





appointed accommodations, guests also enjoy complimentary coffee, HBO® and free local telephone calls. The Conference Center provides an ideal location for business meetings or group events, with every detail attended to by our professional and courteous staff. While in Sonora, guests are a short distance from many cultural and historic recreational areas, including the restored city of Columbia State Park, and Dodge Ridge Ski Area. We look forward to your visit at the Best Western Sonora Oaks.

[Back](#)



Photo Credits This Page Top:  
Terri Metz, Groveland Hotel,  
Historic Morgan Mansion, Terri  
Metz, Railtown

**OFFICIAL WEBSITE OF THE TUOLUMNE COUNTY VISITORS BUREAU**

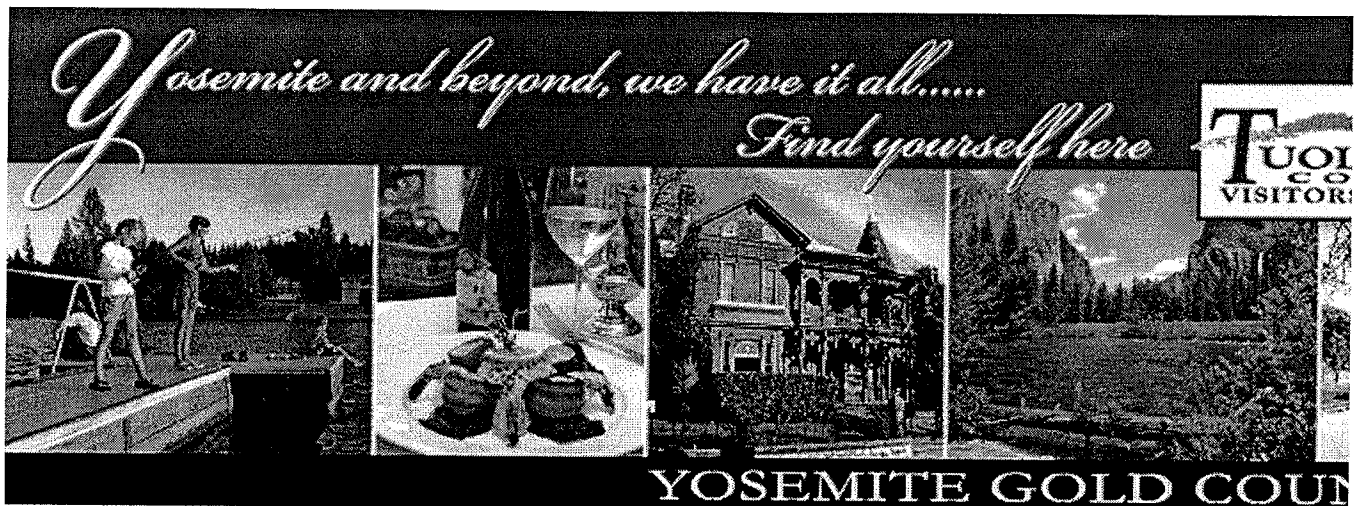
542 W. Stockton Rd, P.O. Box 4020 Sonora CA 95370

Phone: 209-533-4420, Toll-Free: 800-446-1333, Fax: 209-533-0956, Email: [tcvbinfo@mlod](mailto:tcvbinfo@mlod)

© Tuolumne County Visitors Bureau, 2006 All Rights Reserved

[Home](#) | [Lodging](#) | [Dining](#) | [Attractions](#) | [State & National Parks](#) | [Wild Adventure](#) | [Mild Adventure](#) | [Maps](#) | [Arts, Entertainment & Shopping Events](#)  
[Specials](#) | [Meetings & Conferences](#) | [Weddings](#) | [How to Get Here](#) | [TCVB Membership](#) | [Travel Trade & Media](#) | [Newsletter](#) | [Contact Us](#)

Tuolumne County California is the Gateway to Yosemite, Gold Country, the Central Sierra Nevada and home to Stanislaus National Forest, Railtown. Come and enjoy white water river rafting, boating, fishing, winter sports, lodging, restaurants, live theater, golfing, camping, horseback riding, gold panning the mountains and more. Tuolumne County Visitors Bureau, Yosemite National Park, Gold Country, Central Sierra Nevada, Columbia State Historic Park, parks, Railtown 1887, outdoor recreation, Stanislaus National Forest, Emigrant Wilderness, Sonora hotel, Historic inn, country inns, Jamestown motel, motels, Columbia B & B, bed & breakfast, Twain Harte cabin, cabins, Pinecrest Lake Resort lodging, accommodations, Strawberry inn, inns, Long barn ice skating, Dodge Ridge skiing, Tuolumne City, Black Oak Casino, Leland, H. S. Gentry sledding, New Melones boating, Houseboating, Lake Don Pedro, river, fishing, fish, , Kennedy Meadows horseback riding, pack trips, Fin mountain golfing, East Sonora live theater, upper 108 hiking, foothill biking, rock climbing, camp, mountain camping



[HOME](#) [LODGING](#) [DINING](#) [ATTRACTIONS](#) [STATE & NATIONAL PARKS](#) [WILD ADVENTURE](#) [MILD A](#)

enter your keywords

[ARTS & ENTERTAINMENT](#)  
[CALENDAR OF EVENTS](#)  
[CAMPING/RV](#)  
[COMMUNITY LINKS](#)  
[CONTACT US](#)  
[E-NEWSLETTER SIGN UP](#)  
[FILM COMMISSION](#)  
[HISTORIC TOWNS](#)  
[MAPS & DIRECTIONS](#)  
[MEETINGS & CONFERENCES](#)  
[MEMBER LOGIN](#)  
[REGIONAL LODGING](#)  
[SERVICES](#)  
[SHOP OUR STORE](#)  
[SHOPPING](#)  
[SPECIALS & PACKAGES](#)  
[TCVB MEMBERSHIP](#)  
[TRAVEL TRADE & MEDIA](#)  
[TUOLUMNE COUNTY FACTS](#)  
[WEDDINGS](#)  
[WEB LINKS](#)

## THE EDELWEIS GUEST COTTAGE



17280 Monte Grande Rd.  
Soulsbyville, Ca 95372  
(209) 928-4169

Fax: (209) 928-5712 \*51

The charming and private Edelweis Cottage accommodates up to a party of six persons. Two romantic bedrooms, a French provincial kitchen, a uniquely decorated bathroom, and a living room with an old brick fireplace make for a serene experience. Private and spacious decks provide lots of room for those summer BBQs, dine in or outside. 15 minutes to Pinecrest Lake, Dodge Ridge Ski Area and Leland Snow Play Park. Black Oak Casino a short 5 min. drive.

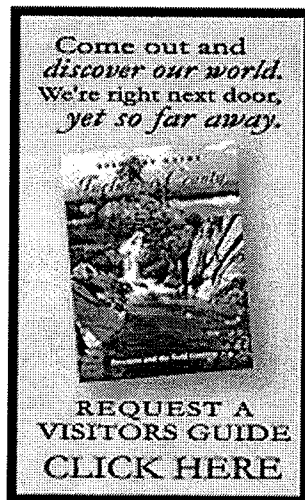
### Directions:

Take Hwy. 108 east to the Soulsbyville Road turn off. Turn right and continue south 2 miles to Armario Rd. Left on Armario for 100 yards, left

### Nearby Event:

Theatre: Sierra F  
"Moonlight and M

[VIEW ALL EVEN](#)



again on Monte Grande Road 1 mile to the Edelweis.

[Back](#)

Photo Credits This Page Top:  
Terri Metz, Groveland Hotel,  
Historic Morgan Mansion, Terri  
Metz, Railtown

**OFFICIAL WEBSITE OF THE TUOLUMNE COUNTY VISITORS BUREAU**

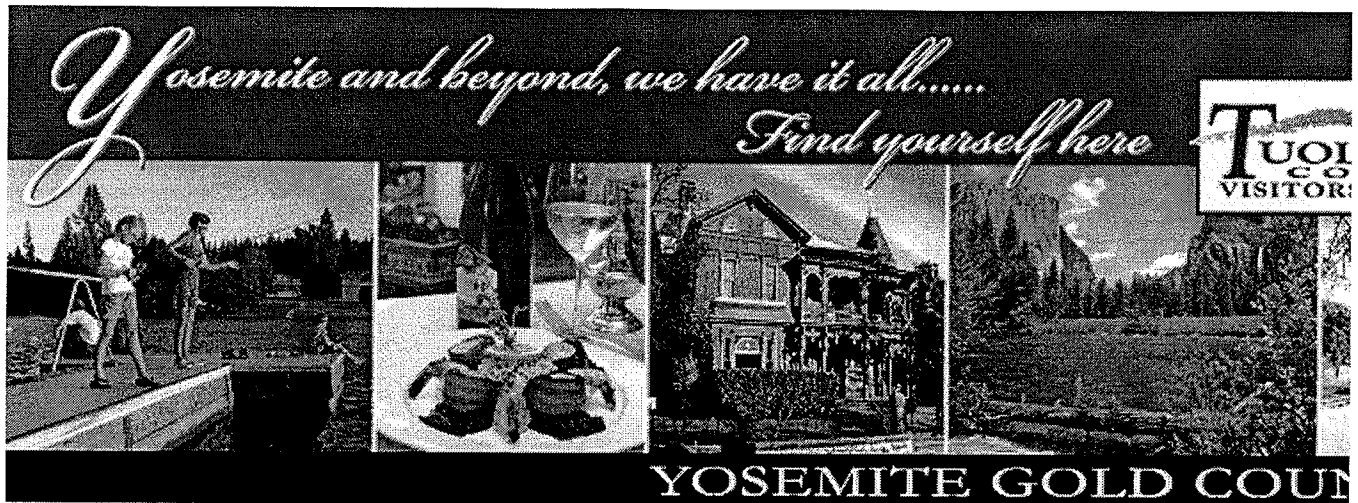
542 W. Stockton Rd, P.O. Box 4020 Sonora CA 95370

Phone: 209-533-4420, Toll-Free: 800-446-1333, Fax: 209-533-0956, Email: [tcvbinfo@mlod](mailto:tcvbinfo@mlod)

© Tuolumne County Visitors Bureau, 2006 All Rights Reserved

[Home](#) | [Lodging](#) | [Dining](#) | [Attractions](#) | [State & National Parks](#) | [Wild Adventure](#) | [Mild Adventure](#) | [Maps](#) | [Arts, Entertainment & Shopping](#)  
[Events](#)  
[Specials](#) | [Meetings & Conferences](#) | [Weddings](#) | [How to Get Here](#) | [TCVB Membersip](#) | [Travel Trade & Media](#) | [Newsletter](#) | [Contact Us](#)

Tuolumne County California is the Gateway to Yosemite , Gold Country, the Central Sierra Nevada and home to Stanislaus National Forest, Railtown. Come and enjoy white water river rafting, boating, fishing, winter sports, lodging, restaurants, live theater, golfing, camping, horseback riding, gold panning the mountains and more. Tuolumne County Visitors Bureau, Yosemite National Park, Gold Country, Central Sierra Nevada, Columbia State Historic Park, parks, Railtown 1887, outdoor recreation, Stanislaus, National, Forest, Emigrant Wilderness, Sonora hotel, Historic inn, country inns, Jamestown motel, motels, Columbia B & B, bed & breakfast, Twain Harte cabin, cabins, Pinecrest Lake Resort lodging, accommodations, Strawberry inn, inns, Long barn ice skating, Dodge Ridge skiing, Tuolumne City, Black Oak Casino, Leland, H. P. Lovecraft, New Melones boating, Houseboating, Lake Don Pedro, river, fishing, fish, , Kennedy Meadows horseback riding, pack trips, Fin mountain golfing, East Sonora live theater, upper 108 hiking, foothill biking, rock climbing, camp, mountain camping



HOME LODGING DINING ATTRACTIONS STATE & NATIONAL PARKS WILD ADVENTURE MILD A

enter your keywords

Search Site

ARTS & ENTERTAINMENT  
CALENDAR OF EVENTS  
CAMPING/RV  
COMMUNITY LINKS  
CONTACT US  
E-NEWSLETTER SIGN UP  
FILM COMMISSION  
HISTORIC TOWNS  
MAPS & DIRECTIONS  
MEETINGS &  
CONFERENCES  
MEMBER LOGIN  
REGIONAL LODGING  
SERVICES  
SHOP OUR STORE  
SHOPPING  
SPECIALS & PACKAGES  
TCVB MEMBERSHIP  
TRAVEL TRADE & MEDIA  
TUOLUMNE COUNTY  
FACTS  
WEDDINGS  
WEB LINKS

## SNOWSHOE BREWING COMPANY



Hours: 11:30-8, 11:30-9 Fri & Sat, Closed Mondays  
Cost: \$8-\$20  
Location: Standard

19040 Standard Road  
Sonora, CA 95370  
(209) 536-1445

<http://www.snowshoebrewing.com/index.html>  
SEND EMAIL

The menu showcases a wide variety of appetizers, salads and main course selections... everything "from prime rib to nachos", that are certain to please every palate!

The food is delicious and reasonably priced. Appetizers include buffalo wings, rib baskets, potato skins and calamari strips. Salads, such as Shrimp Louie or Chinese Chicken can be teamed with a bowl of fresh soup for a delicious and satisfying light meal. Our burger and sandwich menu offers choices ranging from the "Big Trees Burger" (served on grilled parmesan bread with grilled onions) to Cajun and Teriyaki sandwiches and Mexican grill specialties that include soft tacos, tostadas and fajitas.

Nearby Event:

Community Fude  
Sierra Repertory

VIEW ALL EVEN

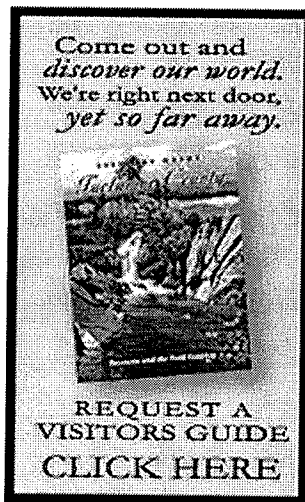


Photo Credits This Page Top:  
Terri Metz, Groveland Hotel,  
Historic Morgan Mansion, Terri  
Metz, Railtown

The vegetarian and low-fat selections include veggie burgers, fajitas and spaghetti. The Fireside Grill offers hearty fare such as pork loin, baby back ribs, New York steak and prime rib. We also serve delicious pasta dishes and pizza. A children's menu is available, which includes kid-favorites such as corn dogs, spaghetti and chicken strips.... and don't forget to save room for some of our mouth-watering desserts!

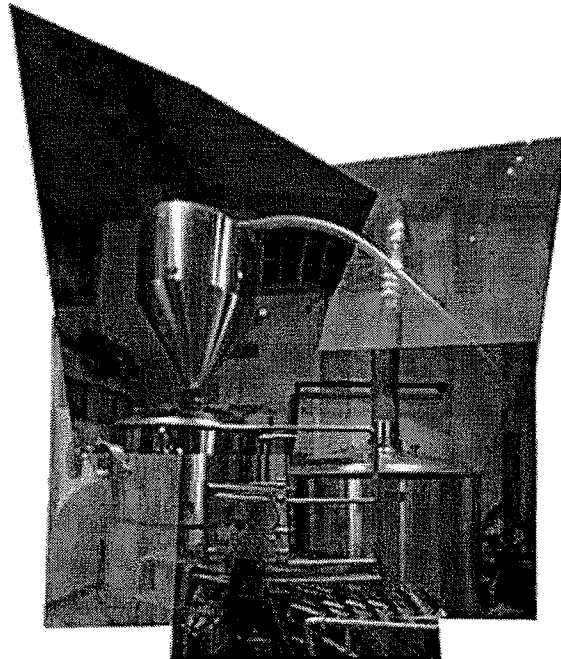
For those who prefer takeout, visit our full-service take-n-bake "pizza parlor" with choices ranging from Momma Mia's Favorite Combo to Garlic Festival Pizza Bread. Over 15 gourmet toppings are available, so let your imagination run amok!

**Directions:**

Going east on Hwy 108 bypass through Sonora to the end at Standard Road. Crossing Mono Way (at Hwy 108) on Standard Road keep going about 3/4 miles until you see Snowshoe Brewery on the right side of the road in the middle of Standard.

Our second location is on 2050 Highway 4, Arnold, CA 95223  
209) 795-2272 in Calaveras County.

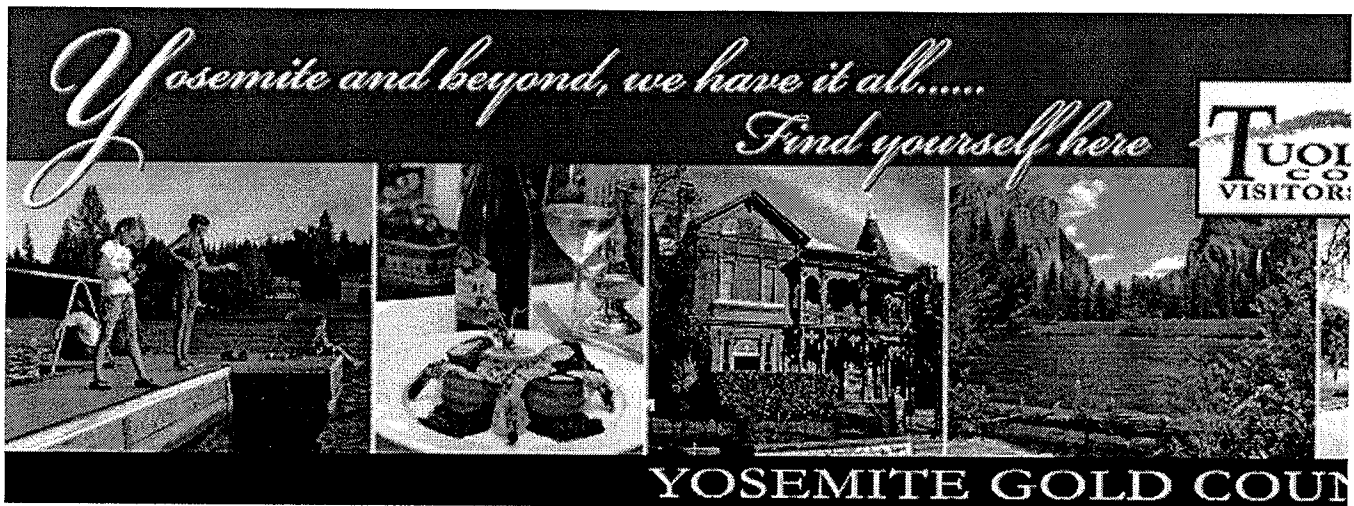
**Back**



**OFFICIAL WEBSITE OF THE TUOLUMNE COUNTY VISITORS BUREAU**  
542 W. Stockton Rd, P.O. Box 4020 Sonora CA 95370  
Phone: 209-533-4420, Toll-Free: 800-446-1333, Fax: 209-533-0956, Email: [tcvbinfo@mlod](mailto:tcvbinfo@mlod)

© Tuolumne County Visitors Bureau, 2006 All Rights Reserved

Home | Lodging | Dining | Attractions | State & National Parks | Wild Adventure | Mild Adventure | Maps | Arts, Entertainment & Shopping  
Events  
Specials | Meetings & Conferences | Weddings | How to Get Here | TCVB Membership | Travel Trade & Media | Newsletter | Contact Us



HOME LODGING DINING ATTRACTIONS STATE & NATIONAL PARKS WILD ADVENTURE MILD A

enter your keywords

Search Site

ARTS & ENTERTAINMENT  
CALENDAR OF EVENTS  
CAMPING/RV  
COMMUNITY LINKS  
CONTACT US  
E-NEWSLETTER SIGN UP  
FILM COMMISSION  
HISTORIC TOWNS  
MAPS & DIRECTIONS  
MEETINGS & CONFERENCES  
MEMBER LOGIN  
REGIONAL LODGING  
SERVICES  
SHOP OUR STORE  
SHOPPING  
SPECIALS & PACKAGES  
TCVB MEMBERSHIP  
TRAVEL TRADE & MEDIA  
TUOLUMNE COUNTY FACTS  
WEDDINGS  
WEB LINKS

Hot Happenings:

Felici Piano Trio

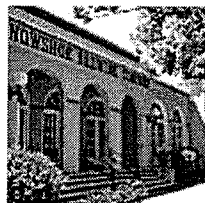
VIEW ALL EVENTS

## DINING

### SEARCH RESULTS:

#### SONORA - EAST

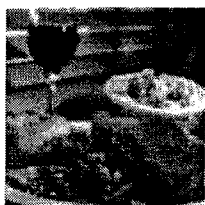
##### Snowshoe Brewing Company



Snowshoe Brewing Company has two restaurant brewpubs located in the foothills of the Sierra Nevada Mountains. One in Sonora and the other in Arnold on Hwy 4.

[View Details](#)

##### Papa's New Roost



Breakfast and lunch to crow about, served 7 days a week!

[View Details](#)

##### The Peppery Gar & Brill



Great selection of wonderful fresh food.

[View Details](#)

##### New Great Wall



Excellent Chinese cuisine specializing in Hunan and Szechwan.

[View Details](#)

### SEARCH DINING

Dining Type:

All Types

Region:

Sonora - East

☐ Pets Welcome

☐ Quicklist

[Printable List](#)

### TCVB Sp

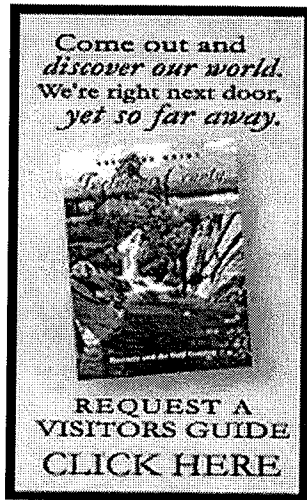
#### Cafe Charlotte

#### Weekly Dinner :

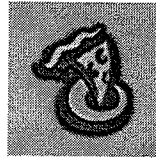
Each week we feature fish perhaps wild halibut, sole, salmon. Always priced under \$19.95 or even less. Other specials include Lamb, (all 8 ribs) Iron Steak from the list by email. Thursday contact HotelCharlotte@details.

Photo Credits: Blaine Groveland Hotel, Eproson House





#### Round Table Pizza



Wide selection of pizza, sandwiches, soup & salad bar.

[View Details](#)

#### Pine Tree Restaurant



Great Family restaurant.

[View Details](#)

Found 6 items.

### OFFICIAL WEBSITE OF THE TUOLUMNE COUNTY VISITORS BUREAU

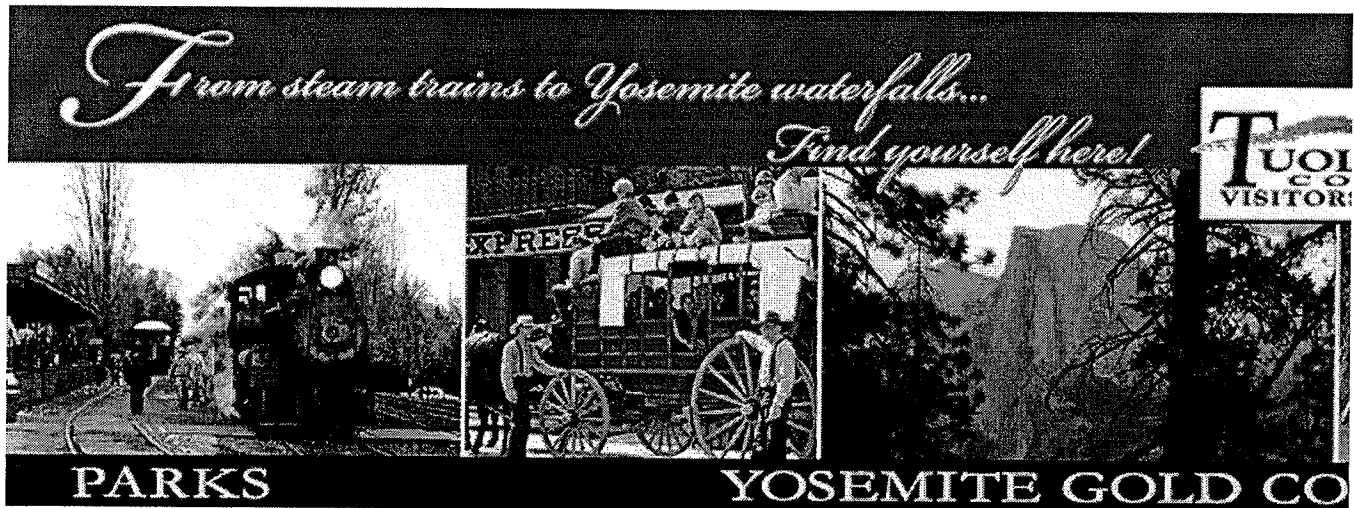
542 W. Stockton Rd, P.O. Box 4020 Sonora CA 95370

Phone: 209-533-4420, Toll-Free: 800-446-1333, Fax: 209-533-0956, Email: [tcvbinfo@mlod](mailto:tcvbinfo@mlod)

© Tuolumne County Visitors Bureau, 2006 All Rights Reserved

[Home](#) | [Lodging](#) | [Dining](#) | [Attractions](#) | [State & National Parks](#) | [Wild Adventure](#) | [Mild Adventure](#) | [Maps](#) | [Regional Lodging](#)  
[Calendar of Events](#) | [Arts and Entertainment](#) | [Shopping](#) | [Meetings & Conferences](#) | [Weddings](#) | [Historic Towns](#) | [Services](#) | [Ma](#)  
[TCVB Membersip](#) | [Travel Trade & Media](#) | [E-Newsletter Sign Up](#) | [Tuolumne County Facts](#) | [Store](#) | [Contact](#) | [Commun](#)  
site by [dobaydesign](#)

Tuolumne County California is the Gateway to Yosemite, Gold Country, the Central Sierra Nevada and home to Stanislaus National Forest. Come and enjoy white water river rafting, boating, fishing, winter sports, lodging, restaurants, live theater, golfing, camping, horse gold panning the mountains and more. Tuolumne County Visitors Bureau, Yosemite National Park, Gold Country, Central Sierra Nevada, Columbia State Historic Park, parks, Railtown 1887, outdoor recreation, Stanislaus National Forest, Emigrant Wilderness, Sonora hotel, Historic inn, country inns, Jamestown motel, motels, Columbia B & B, bed & breakfast, Twain Harte cabin, cabins, Pinecrest Lake Resort lodging, accommodations, Strawberry inn, inns, Long barn ice skating, Dodge Ridge skiing, Tuolumne City, Black Oak Casino, Leland, H sledding, New Melones boating, Houseboating, Lake Don Pedro, river, fishing, fish, , Kennedy Meadows horseback riding, pack trips, Fin mountain golfing, East Sonora live theater, upper 108 hiking, foothill biking, rock climbing, camp, mountain camping



HOME LODGING DINING ATTRACTIONS STATE & NATIONAL PARKS WILD ADVENTURE MILD A

enter your keywords

Search Site

## STATE AND NATIONAL PARKS

No Records to Display.

SEARCH STATE AND NATIONAL PARKS:

State and National F

All Types

Region:

Sonora - East

☐ Quicklist

Printable List

Photo Credits: Railtown  
CASP, Yosemite Valley  
Big Trees - Kyle Hukar

ARTS & ENTERTAINMENT

CALENDAR OF EVENTS

CAMPING/RV

COMMUNITY LINKS

CONTACT US

E-NEWSLETTER SIGN UP

FILM COMMISSION

HISTORIC TOWNS

MAPS & DIRECTIONS

MEETINGS &  
CONFERENCES

MEMBER LOGIN

REGIONAL LODGING

SERVICES

SHOP OUR STORE

SHOPPING

SPECIALS & PACKAGES

TCVB MEMBERSHIP

TRAVEL TRADE & MEDIA

TUOLUMNE COUNTY  
FACTS

WEDDINGS

WEB LINKS

Hot Happenings:

Thumbs

VIEW ALL EVENTS

*Art to antiques, theatre and concerts...*  
*Find yourself here!*



**ARTS & ENTERTAINMENT** **YOSEMITE GOLD**

HOME LODGING DINING ATTRACTIONS STATE & NATIONAL PARKS WILD ADVENTURE MILD A

enter your keywords

Search Site

ARTS & ENTERTAINMENT  
CALENDAR OF EVENTS  
CAMPING/RV  
COMMUNITY LINKS  
CONTACT US  
E-NEWSLETTER SIGN UP  
FILM COMMISSION  
HISTORIC TOWNS  
MAPS & DIRECTIONS  
MEETINGS &  
CONFERENCES  
MEMBER LOGIN  
REGIONAL LODGING  
SERVICES  
SHOP OUR STORE  
SHOPPING  
SPECIALS & PACKAGES  
TCVB MEMBERSHIP  
TRAVEL TRADE & MEDIA  
TUOLUMNE COUNTY  
FACTS  
WEDDINGS  
WEB LINKS

**Hot Happenings:**

Theatre: Stage 3 "My Heart  
and My Flesh"

**VIEW ALL EVENTS**

**ARTS, ENTERTAINMENT & SHOPPING**

**SEARCH RESULTS:**

**SONORA - EAST**

**Sierra Repertory Theatre**



SRT is an award-winning professional regional theatre, with two venues (East Sonora & Fallon House in Columbia State Historic Park), now in its 27th season.  
**View Details**

**SEARCH ARTS  
ENTERTAINME**  
Arts and Enterta

All Types

Region:

Sonora - East

☐ Quicklist

**Printable List**

**TCVB Sp**

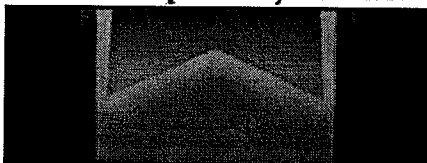
**Brad Burns**  
Get a 15% disco  
and prints when

Photo Credits: Idol  
Patrick Karnahan :  
Black Irish, Stage :  
Fireman's Muster



## Sierra Repertory Theatre

### Contact Us



[About SRT](#)

[Venues](#)

[Staff & Company](#)

[Press Releases](#)

[Past Productions](#)

### [Home](#)

[2007 Season](#)  
[Box Office](#)  
[Season Tickets](#)  
[Directions](#)  
[SRT Store](#)  
[Visitor Info](#)  
[About SRT](#)  
[Auditions/Jobs](#)  
[Education](#)  
[Support SRT](#)  
[Links](#)  
[Contact Us](#)

Sierra Repertory Theatre  
P.O. Box 3030  
Sonora, California 95370

(209)532-3120  
(209) 532-7270 (fax)

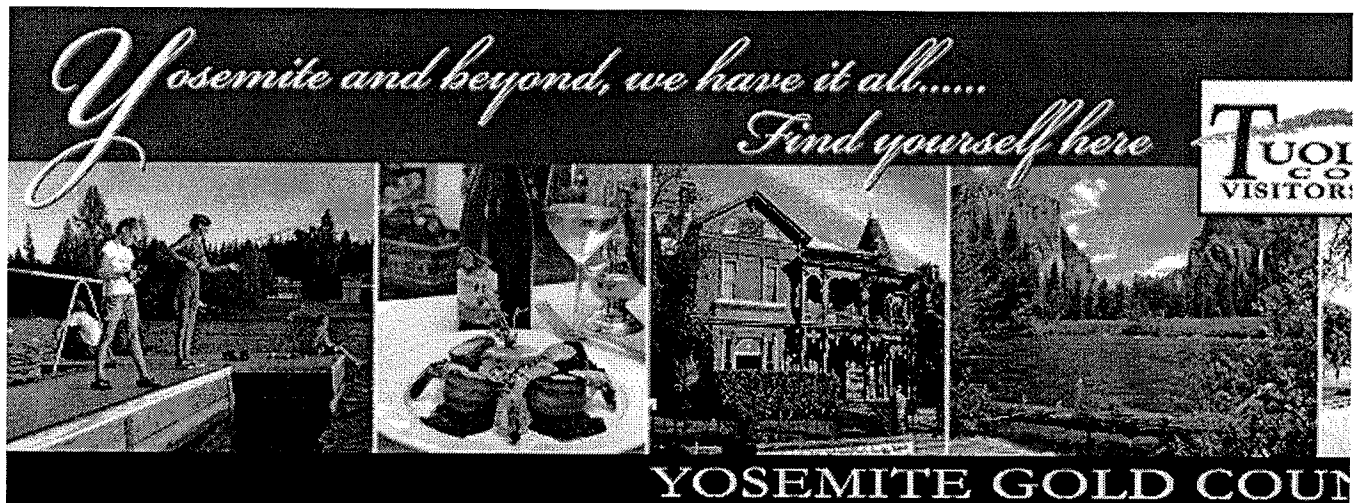
For Ticket Sales: [tickets@sierrarep.org](mailto:tickets@sierrarep.org)  
For Group Sales: [groups@sierrarep.org](mailto:groups@sierrarep.org)  
For Usher Volunteers: [usher@sierrarep.org](mailto:usher@sierrarep.org)  
For Costume Rentals: [costumes@sierrarep.org](mailto:costumes@sierrarep.org)  
For Prop Rentals: [props@sierrarep.org](mailto:props@sierrarep.org)  
For Other Inquiries: [admin@sierrarep.org](mailto:admin@sierrarep.org)

Join the **Sierra Repertory Theatre** mailing list

Email:

(c) 2003 Sierra Repertory Theatre  
P.O. Box 3030 Sonora, CA 95370  
(209)532-3120

All photos provided by Sierra Photography, Dirk Travis  
and Rich Miller Photography



HOME LODGING DINING ATTRACTIONS STATE & NATIONAL PARKS WILD ADVENTURE MILD A

enter your keywords

Search Site

ARTS & ENTERTAINMENT

CALENDAR OF EVENTS

CAMPING/RV

COMMUNITY LINKS

CONTACT US

E-NEWSLETTER SIGN UP

FILM COMMISSION

HISTORIC TOWNS

MAPS & DIRECTIONS

MEETINGS &  
CONFERENCES

MEMBER LOGIN

REGIONAL LODGING  
SERVICES

SHOP OUR STORE

SHOPPING

SPECIALS & PACKAGES

TCVB MEMBERSHIP

TRAVEL TRADE & MEDIA

TUOLUMNE COUNTY  
FACTS

WEDDINGS

WEB LINKS

## EAST SONORA CONFERENCE & BANQUET CENTER



14270 Mono Way  
Sonora, CA 95370  
(209) 533-2889

Fax: (209) 532-1522

<http://aladdininn.com/conference-banquet/>  
SHOW ME A MAP OF THIS LOCATION  
SEND EMAIL

The East Sonora Conference and Banquet Center was recently recognized by the Tuolumne County Chamber of Commerce with the Award for the "Best Interior Remodel of 2003". We look forward to sharing these new facilities with you and working with you to plan a successful and memorable event.

Our remodel features a warm, friendly environment, with new carpeting and imported European tile floors, new linens, and a cozy, lounge area -- ideal for your special occasion. Conveniently located adjacent to the Aladdin Inn, the East Sonora Conference and Banquet Center is available for any type of event, such as business meetings, family reunions, or rehearsal dinners. Our state-of-the-art audio/visual amenities include a LCD Screen, two mounted televisions with PowerPoint adaptability, microphones and public address system and podium, ideal for any type of presentation.

We have flexible booking hours and are available for breakfast, lunch or dinner events and can accommodate groups of all sizes up to 90 guests. Let us work with you to plan an event and a catered meal that you and your guests will truly enjoy. Specialty in-house catering is available by our expert chefs who are ready to personalize your menu.

Nearby Event:

Plant Sale "Nativ

VIEW ALL EVEN



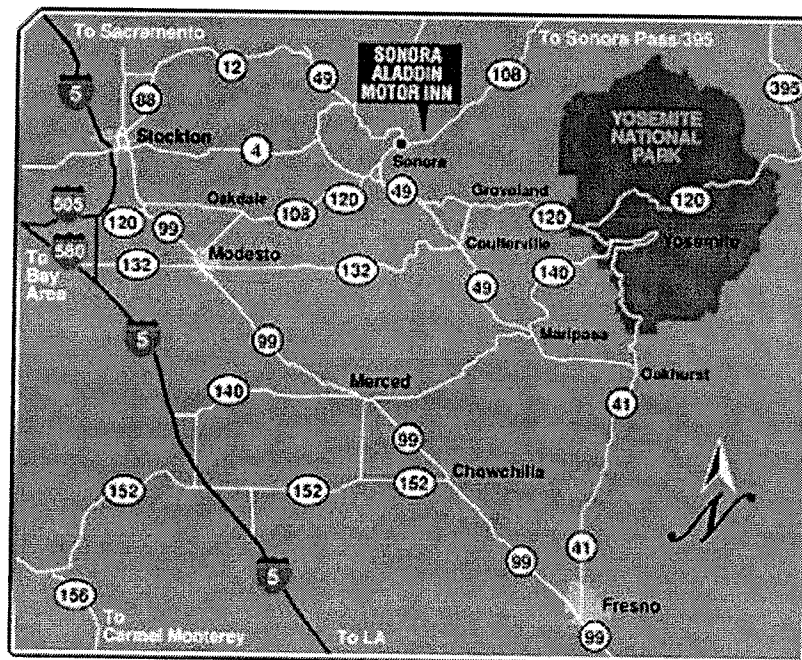
Photo Credits This Page Top:  
Terri Metz, Groveland Hotel,  
Historic Morgan Mansion, Terri  
Metz, Railtown

Maximum capacity for banquet seating is 90 guests  
Maximum capacity for theater style seating is 60 guests  
Maximum capacity for school room seating is 48 guests

**Directions:**  
**From San Francisco:**

Driving to the East Sonora Conference Center from the San Francisco Bay Area typically takes about 2 1/2 hours  
Take I-80 East, towards Oakland  
Merge onto I-580 East towards CA-24/Downtown Oakland/Hayward-Stockton  
Take I-205 East toward Tracy/Stockton  
Merge onto I-5 North  
Merge onto CA-120 East toward Manteca/Sonora  
Take the CA-120 East/Yosemite Avenue exit towards Sonora  
Turn Right onto East Yosemite Avenue/CA-120 and continue to follow CA-120  
Turn Left onto CA-108 East/CA-120 East. Continue to follow CA-108 East  
Take the Hess Avenue exit  
Turn Right onto Hess Avenue  
Turn Left onto Mono Way  
Look for our large sign on the left side of Mono Way

**Back**







## TUOLUMNE COUNTY FIRE DEPARTMENT

---

### Find Your Fire Station

Information updated as of 5/04/2006

[Mono Village Station 51](#)  
[Jacksonville Station 52](#)  
[Ponderosa Hills Station 53](#)  
[Long Barn Station 54](#)  
[Pinecrest Station 55](#)  
[Mono Vista Station 56](#)  
[Crystal Falls Station 57](#)  
[Cedar Ridge Station 58](#)  
[Sonora Station 59](#)  
[Chinese Camp Station 61](#)  
[Moccasin Station 62](#)  
[Smith Station Station 63](#)  
[Don Pedro Station 64](#)  
[Jamestown Station 76](#)  
[Mi Wuk/Sugarpine Station 77](#)  
[Columbia College Station 79](#)

51 Mono Village  
Telephone: 532-5983  
Fax: 532-0618  
Location: 19500 Hillsdale Dr., Sonora 95370  
Mailing Address: Same

Station 51 Mono Village is a Volunteer and 24 hour Paid-staff fire station. It is to date the only fully County funded station. Its personnel include a Fire Captain, four Engineers and one Firefighter. This station is regularly staffed with 2 persons on duty at all times. This station has angle rope rescue equipment and the jaws-of-life available for rescue on it's engine. The equipment that responds from this station is Engine 511 a 1997 HME engine, Water Tender 518 a 1989 Freightliner and Engine 512 a 1993 International. Utility 905 a 1997 Dodge pickup is also housed at this station. Mono Village Station was built in 1977 and was later added on to in 1985. This station is County owned.

[RETURN TO TOP](#)

52 Jacksonville  
No longer an active Station.

Station 52 Jacksonville currently houses reserve engines. It was built in 1980 and later added on to in 1985. This station is County owned.

### -links-

[Fire Home](#)  
[Find Your Fire Station](#)  
[About Us](#)

April Is...

## NATIONAL POETRY MONTH

~Where the Sidewalk Ends~  
~by Shel Silverstein~

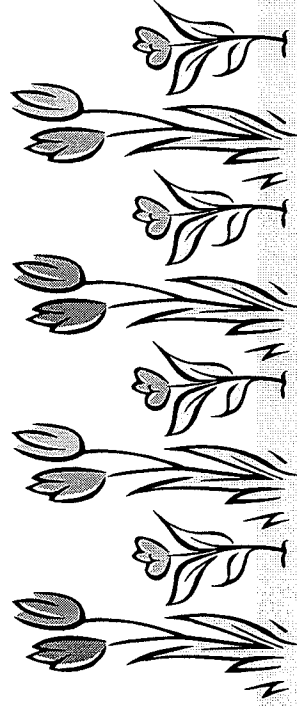
There is a place where the sidewalk ends  
And before the street begins,  
And there the grass grows soft and white,  
And there the sun burns crimson bright,  
And there the moon-bird rests from his flight  
To cool in the peppermint wind.

Let us leave this place where the smoke blows black  
And the dark street winds and bends.  
Past the pits where the asphalt flowers grow  
We shall walk with a walk that is measured and slow,  
And watch where the chalk-white arrows go  
To the place where the sidewalk ends.

Yes we'll walk with a walk that is measured and slow,  
And we'll go where the chalk-white arrows go,  
For the children, they mark, and the children,  
they know  
The place where the sidewalk ends.

**Tuolumne County Library**  
<http://www.tuolcolib.org>  
Phone: (209) 533-5507

# FREEDOM



## Library Information

**Groveland Branch**  
962-6144

18990 Hwy 120, Groveland  
Mon-Thurs 2-6  
Friday & Saturday 10-2

**MiWuk Branch**  
586-6251

24411 Sierra Park Dr  
Tuesday 11-2, Thursday & Friday 1-4

**Pinecrest Resort Branch**  
965-4225

Adjoining Art Gallery  
Closed until May 07

**Sonora Main Branch**  
533-5507

480 Greenley Rd  
Mon-Wed 10-8  
Thursday & Friday 10-6  
Saturday 10-4

**Tuolumne Branch**  
928-3612

18636 Main St  
Tuesday & Wednesday 1-5  
Thursday 3-7, Friday & Saturday 11-2

**Twain Harte Branch**  
586-4501

18701 Tiffeni Dr #1F  
Monday-Thursday 1-4:30, Saturday 10-2


**Law Library**  
536-0308



99 N. Washington St. Suite B  
Tuesday-Thursday 11-2

**WOW Mobile Library**


For information on scheduled times and places  
533-5507

[Copnet Dir.](#) [Justice Dir.](#) [Public Serv.](#) [CopNet Radio](#) [CopSource](#) [HALT!](#) [CopMail](#) [Chronicles](#)




**DIRECTORY**  
[Agencies](#)  
[Associations](#)  
[Calendar](#)  
[Homepages](#)  
[Memorial](#)  
[Resources](#)  
[www.copnet.org](http://www.copnet.org)  
  


## Agencies of the World



### California



### California

#### National Associations, Unions & Organizations

- » Long Beach POA, Long Beach
- » Peace Officer's Research Association

#### Fraternal Order of Police

- » California State Lodge

#### Colleges

- » West Valley-Mission Community College District Police

#### Corrections

- » California Department of Corrections
- » California Youth and Adult Correctional Agency
- » Sutter County Sheriff's Department

#### County Agencies / Departments

- » Amador County Sheriffs Department
- » Lake County Sheriff's Department
- » Los Angeles County Probation Department
- » Los Angeles County Sheriff's Department - Marina Del Rey
- » Los Angeles County Sheriff's Department - Walnut/San Dimas Station
- » Los Angeles Sheriff's Department, LASD Online
- » Orange County Marshal's Department
- » Orange County Probation Department
- » Orange County Sheriff-Coroner Department
- » Sacramento County Sheriff's Department
- » San Bernardino County Sheriff
- » San Mateo County Sheriff's Office
- » Santa Barbara County Sheriff's Department
- » Solano County Sheriff's Office

#### Criminal Justice

- » California Governor's Office of Criminal Justice Planning

#### District Attorney

- » Los Angeles County District Attorney
- » Santa Clara County District Attorney's Office

### **Highway Patrol**

- » California Highway Patrol

### **Judicial**

- » California Attorney General
- » California Codes and Laws
- » California Law, Searchable database
- » U.S. Attorney for the Central District of California

### **Parks & Wildlife**

- » California Department of Fish & Game
- » East Bay Regional Parks Police

### **Police Departments / Services**

- » Arcadia Police Department
- » Atherton Police Department
- » Brea Police Department
- » Calistoga Police Department
- » Carlsbad Police Department
- » Concord Police Department
- » Daly City Police Department
- » Downey Police Department
- » Escondido Police Department
- » Fresno Police Department
- » Garden Grove Police Department
- » Huntington Beach Police Department
- » Indio Police Department
- » Irvine Police Department
- » Lemoore Police Department
- » Lompoc Police Department
- » Long Beach PD
- » Marin Community College Police Department
- » Marina Department of Public Safety
- » Moraga Police Department
- » Oakland Police Department
- » Oxnard CA Police Department
- » Pacific Grove Police Department
- » Red Bluff Police Department
- » Redding Police Department
- » Redondo Beach Police Department
- » Sacramento Police Department
- » Salinas Police Department
- » San Bruno Police Department
- » San Carlos Police Department
- » San Francisco Police Department
- » San Jose CA Police Department
- » Santa Clara Police Department
- » Santa Rosa Police Department, Santa Rosa
- » Sonoma Police Department
- » South Pasadena Police Department

- » St. Helena Police Department
- » Tustin Police Department
- » Upland Police Department
- » Visalia Police Department
- » West Covina Police Department
- » Woodland Police Department

### **Public Safety, Department of**

- » Pepperdine University Public Safety Department

### **Safety, Training, Education & Research**

- » Ventura County Police and Sheriff's Reserve Academy

### **School Police & Resource Officers**

- » Pasadena Unified School District Police Department

### **State Agencies / Departments**

- » California Alcohol Beverage Control

### **Universities**

- » California State University, Chico Police Department
- » California State University, Northridge, Police
- » Humboldt State University Police Dept.
- » San Diego State University Department of Public Safety
- » Sonoma State University Police Dept.
- » Stanford University Department of Public Safety
- » University of California at Davis Police Department
- » University of California at Irvine Police Dept.
- » University of California at Los Angeles Police Dept.
- » University of California at Santa Barbara Police Department
- » University of California-Santa Cruz Police Department
- » University of San Diego Public Safety Department
- » University of San Francisco Public Safety Department
- » University of Southern California Department of Public Safety

US - Agencies Quick Pick Table																
AL	AK	AR	AZ	CA	CO	CT	DE	FL	GA	HI	ID	IL	IN	IA	KS	KY
LA	ME	MD	MA	MI	MN	MS	MO	MT	NE	NV	NH	NJ	NM	NY		
NC	ND	OH	OK	OR	PA	RI	SC	SD	TN	TX	UT	VT	VA	WA		
WV	WI	WY	DC	Military	Federal											

AFRICA | ASIA | AUSTRALIA  
CENTRAL AMERICA | EUROPE | MIDDLE EAST  
NORTH AMERICA | SOUTH AMERICA

CopNet Directory | Justice Directory | Public Services | CopNet Radio  
CopSource | HALT! | CopMail | CopNet Chronicles | CopNet Home

Graphics, site image and design are copyright protected.  
WaveRiders LLC, ©1997  
Email: [admin@copnet.org](mailto:admin@copnet.org).

**Home**

Monday  
Apr. 16, 2007



69.3° F  
Sonora, California  
Click for Forecast  
Burn Day ? Yes  
more info ...

**Real Estate****Forums****Scanner 911****Classifieds****Homes Murphys Ca**

See current Real Estate listings in Murphys,  
CA. Search now!

**BruceB Tuolumne Realtor**

Real Estate Sonora -Twain Harte, CA View  
all listings - auto e-mail

Ads by Google

Google

Search

☒ Web ☐ this site

**ADVERTISING  
BUSINESS**
**CLASSIFIEDS**

Transportation

Real Estate

Place an ad

**COMMUNITY**

Calendar

Chambers of

Commerce

Elections

Forums

Government

Round Up

School Delays

**ENTERTAINMENT**

Dear Abby

Dining Guide

Horoscope

Movies

Recipes

Soap Operas

Theatre

Word Search

**FIRE INFO****FORUMS****HEALTH****HOME****IMPROVEMENT****NEWS**

Search News

Local / Region

National

International

**OBITUARIES****PERSONALS****POLICE****REAL ESTATE****RECREATION**

Ski Report

**ROUND UP****SITE MAP**

Assemblies Of God (7)  
Baptist (15)  
Bible Churches (6)  
Calvary (3)  
Catholic (6)  
Charismatic (10)  
Christian Science (2)  
Church Of Christ (7)  
Community Churches (8)  
Covenant (5)

Episcopal (6)  
Evangelical (3)  
Foursquare Gospel (2)  
Jehovah's Witnesses (4)  
Jesus Christ Of Latter Day Saints (4)  
Lutheran (6)  
Other (22)  
Presbyterian (2)  
Seventh-day Adventist (4)  
United Methodists (7)  
Religious Supplies (2)

Assemblies Of God

Angels Assembly Of God

(209) 736-2322

815 Dad's Road

Angels Camp, CA 95222

Assembly Of God Church Of San Andreas

(209) 754-3298

Russel Road &amp; Market

San Andreas, CA 95249

Christian Heights Assembly Of God Church

(209) 532-7305

13711 Joshua Way

Sonora, CA 95370-7817

Fax: (209) 532-4374

Community Assembly Of God

(209) 928-3118

P.O. Box 697

Tuolumne, CA 95379-0697

Good Shepherd Assembly Of God

(209) 785-5116

2301 Chief Road

Copperopolis, CA 95228-9551

Living Waters Assembly Of God

(209) 984-5859

10365 9th Avenue

Jamestown, CA 95327-0589

Valley Christian Center Assembly of God

(209) 772-2090

2475 Silver Rapids Road

Valley Springs, CA 95252-0100





**SPORTS****Local Football****TRAFFIC****TECHNOLOGY****Virus Watch****WEATHER****YELLOW PAGES**

---

**Baptist**

Angels Camp First Baptist Church (209) 736-2464  
1555 Depot Road  
Angels Camp, CA 95222-0357

Bible Baptist Church (209) 772-0505  
3872 South Highway 26  
Valley Springs, CA 95252-9259

Big Oak Flat First Baptist Church (209) 962-6231  
P.O. Box 141  
Big Oak Flat, CA 95305-0141

First Baptist Church (209) 736-2464  
1555 Depot Road  
Angels Camp, CA 95222

Grace fellowship of San Andreas (209) 754-4110  
Highway 49  
San Andreas, CA 95249

First Baptist Church (209) 962-7038  
P.O. Box 248  
Big Oak Flat, CA 95305-0248

First Baptist Church Of Sonora (209) 532-4681  
14425 Mono Way  
Sonora, CA 95370-2809  
Fax: (209) 532-3218

First Baptist Church Of Wallace (209) 763-5217  
8021 Wards Avenue  
Wallace, CA 95254

First Missionary Baptist Church (209) 763-5451  
P.O. Box 688  
Valley Springs, CA 95252-0688

Grace Baptist Church (209) 532-4246  
19765 Grace Way  
Sonora, CA 95370-8440

Sierra Pines Baptist Brethren (209) 586-3630  
21101 Crystal Falls Drive  
Sonora, CA 95370-9107

Sonora Baptist Church (209) 532-3517  
412 Stockton Road  
Sonora, CA 95370-4087

Sovereign Grace Chapel (209) 984-3039  
P.O. Box 1130  
Jamestown, CA 95327

Tuolumne Community Baptist Church (209) 928-1838  
18426 Fir Avenue  
Tuolumne, CA 95379

Tuolumne First Baptist Church (209) 965-4265  
P.O. Box 385  
Tuolumne, CA 95379-0385

**Bible Churches**

Grace Baptist Church (209) 532-4246

19765 Grace Way  
Sonora, CA 95370-8440  
Lake Tullock Bible Church (209) 785-4302  
35656 Spangler Lane  
Copperopolis, CA 95228  
Paloma Community Open Bible Church (209) 772-1605  
6291 Church Street  
Valley Springs, CA 95252-9251  
Rail Road Flat Community Bible Church (209) 293-7307  
P.O. Box 216  
Rail Road Flat, CA 95248-0216  
Sierra Bible Church (209) 532-1381  
15171 Tuolumne Road  
Sonora, CA 95370-9728  
Fax: (209) 532-2369  
Word Of Life Fellowship (209) 586-7005  
24630 Highway 108  
Mi-Wuk Village, CA 95346-0097



Calvary  
Calvary Chapel Sonora (209) 533-8820  
19940 Soulsbyville Road  
Soulsbyville, CA 95372  
Calvary Chapel Valley Springs (209) 772-9845  
2359 Berkesey Drive  
Valley Springs, CA 95252-9512  
New Life Family Church (209) 532-9716  
19270 Hillsdale Drive no. 1  
Sonora, CA 95370-9262



Catholic  
All Saints Catholic Church (209) 586-3161  
18674 Cherokee Drive  
Twain Harte, CA 95383  
Catholic Worker Farm (209) 728-2193  
P.O. Box 53  
Sheep Ranch, CA 95250-0053  
St. Andrew 's Catholic Church (209) 754-3815  
162 Church Hill Road  
San Andreas, CA 95249-0550  
Fax: (209) 754-5116  
St. Patrick 's Catholic Church (209) 736-4575  
820 South Main  
Angels Camp, CA 95222-0576  
St. Patrick 's Catholic Church (209) 532-7139  
116 Bradford Street  
Sonora, CA 95370-4924  
St. Patrick's Catholic Church (209) 728-2854  
619 Sheep Ranch Road

Angels Camp, CA 95222-0576



Charismatic

Chapel In The Pines (209) 586-3284

18580 Cherokee Drive  
Twain Harte, CA 95383  
Fax: (209) 586-1645

Community Faith Center (209) 728-3817

1302 Main Street  
Murphys, CA 95247

Cornerstone Faith Center (209) 532-7383

732 Barreta Street  
Sonora, CA 95370

Evangel Chapel (209) 588-0158

Wycoff & Washington  
Sonora, CA 95370

Family Worship Center (209) 532-9673

18080 Blue Bell Road East  
Sonora, CA 95370-9737

Foothills Community Church (209) 962-0448

11892 Poderosa Lane  
Groveland, CA 95321

Mountain Christian Fellowship (209) 728-2250

3488 East Highway 4  
Murphys, CA 95247

Mt Zion (209) 536-9466

14888 Peaceful Valley Road  
Sonora, CA 95370

Mt Zion Pentecostal Church (209) 754-4616

Highway 49  
San Andreas, CA 95249

Victory Church & World Outreach (209) 962-0633

Native Sons Hall, Main Street  
Murphys, CA 95247



Christian Science

Christian Science Society Of Angels Camp (209) 736-4022

Highway 4 & Depot Road  
Angels Camp, CA 95222

First Church Of Christ Scientist-Sonora (209) 532-4141

69 North Washington Street  
Sonora, CA 95370-4706



Church Of Christ

Church Of Christ (209) 532-9449

14054 Tuolumne Road  
Sonora, CA 95370

Church Of Christ Sierra Foothills (209) 532-6435  
14645 Mono Way  
Sonora, CA 95370-9220

Church Of Christ-Angels Camp (209) 736-4792  
685 Copello Drive  
Angels Camp, CA 95222-9855

Church Of Christ-Groveland (209) 962-5122  
18829 Foot  
Groveland, CA 95321

Church Of Christ-Murphys (209) 728-2518  
89 East Highway 4  
Murphys, CA 95247-0242

Church Of Christ-Valley Springs (209) 772-9553  
703 Paloma Road  
Valley Springs, CA 95252-9601

First Congregational Church Of Christ (209) 728-3141  
509 North Algiers  
Murphys, CA 95247-0048



Community Churches

Community Covenant Church (209) 293-4226  
P.O. Box 87  
West Point, CA 95255-0087

Creekside Community Church (209) 532-3205  
13650 Bergel Road  
Sonora, CA 95370-8818

Foothill Community Church (209) 736-9338  
3710 Whittle Road  
Angels Camp, CA 95222

Mokelumne Hill Community Church (209) 286-1165  
8253 South Main Street  
Mokelumne Hill, CA 95245-9706

Mountain Ranch Community Church (209) 754-1650  
8403 East Creek Road  
San Andreas, CA 95249

Murphy's Community Church (209) 728-2688  
330 Main Street  
Murphys, CA 95247-9625

Peaceful Valley Community Church Of God (209) 532-3151  
14535 Peaceful Valley Road  
Sonora, CA 95370-2803

Victory Church & World Outreach (209) 962-0633  
Native Sons Hall, Main Street  
Murphys, CA 95247



Covenant

Chapel in the Pines Covenant Church (209) 795-1064  
2286 Cedar Lane  
Arnold, CA 95223

Community Covenant Church Of San Andreas (209) 754-3881  
261 Treat Avenue  
San Andreas, CA 95249

Good Samaritan Community Covenant Church (209) 772-9548  
4684 Baldwin Street  
Valley Springs, CA 95252-9484

San Andreas Community Covenant Church (209) 754-4254  
P.O. Box 1810  
San Andreas, CA 95249-1810

Sierra Bible Church Of Murphys (209) 728-3021  
Main & Jones Street  
Murphys, CA 95247



Episcopal

Ascension Episcopal Church (209) 785-0225  
P.O. Box 687  
Copperopolis, CA 95228-0687  
Fax: (209) 785-0225

Grace Church Episcopal Mission (209) 754-3878  
Mariposa & Oak Street  
San Andreas, CA 95249  
Fax: (209) 754-3878

St. Clare's Episcopal Church (209) 795-5970  
4531 Highway 4  
Avery, CA 95224-0278

St. James Episcopal Church (209) 532-7644  
Washington & Snell  
Sonora, CA 95370-1145  
Fax: (209) 532-7629

St. Matthew's Episcopal Church (209) 754-3878  
Mariposa & Oak  
San Andreas, CA 95249-0520  
Fax: (209) 754-3878

St. Michael and All Angels Episcopal Church (209) 533-1091  
19632 Highway 108  
Sonora, CA 95370-3125



Evangelical

Copperopolis Evangelical Free (209) 785-4463  
P.O. Box 305  
Copperopolis, CA 95228-0305

Groveland Evangelical Church (209) 962-7131  
19172 Ferretti Road  
Groveland, CA 95321

Twain Harte Evangelical Free (209) 586-3835  
Mark Twain Drive & Fuller  
Twain Harte, CA 95383-0797  
Fax: (209) 586-3873



Foursquare Gospel  
Church On The Hill Foursquare (209) 588-8357  
14800 Old Oak Ranch Road  
Sonora, CA 95370-8569  
Sonora Foursquare Church (209) 532-5724  
20415 Jamestown Road  
Sonora, CA 95370-8005



Jehovah's Witnesses  
Jehovah's Witnesses Arnold Congregation (209) 728-2423  
4339 Meadow View Road  
Murphys, CA 95247  
Jehovah's Witnesses Jamestown Congregation (209) 984-4168  
18144 Seco Street  
Jamestown, CA 95327-9737  
Jehovah's Witnesses San Andreas Congregation (209) 754-4928  
1434 Highway 49  
San Andreas, CA 95249-9585  
Jehovah's Witnesses Sonora Congregation (209) 532-2698  
18155 Blue Bell Road East  
Sonora, CA 95370-9799



Jesus Christ Of Latter Day Saints  
Church Of Jesus Christ Of Latter-Day Saints-Groveland (209) 962-5345  
19780 Old Highway 120  
Groveland, CA 95321  
Church Of Jesus Christ Of Latter-Day Saints-Murphys (209) 728-2531  
400 Bret Harte Drive  
Murphys, CA 95247  
Church Of Jesus Christ Of Latter-Day Saints-San Andreas (209) 754-4135  
221 Church Hill Street  
San Andreas, CA 95249-9602  
Church Of Jesus Christ Of Latter-Day Saints-Sonora (209) 536-9522  
19482 Hillsdale Drive  
Sonora, CA 95370-9203



Lutheran  
Faith Lutheran Church ELCA (209) 728-2041  
Mitchler Avenue & Highway 4  
Murphys, CA 95247  
Foothill Lutheran Church (209) 772-0940  
P.O. Box 541  
Valley Springs, CA 95252-0541  
Mountain Lutheran Church (209) 962-4064



P.O.Box 995  
Groveland, CA 95321  
Mountain Ranch Lutheran Church (209) 754-3732  
8063 Washington Mountain  
Mountain Ranch, CA 95246  
Mt Calvary Lutheran Church ELCA (209) 586-3616  
24176 Pine Lake Drive  
Mi-Wuk Village, CA 95346  
St. Matthews Lutheran Church (209) 532-4639  
29 Hope Lane  
Sonora, CA 95370-5824



Other  
Buck Meadows Church (209) 962-5789  
Highway 120  
Groveland, CA 95321  
Buck Meadows Missionary Church (209) 962-7249  
11474 Hamilton Station Loop  
Groveland, CA 95321  
Burson Full Gospel Church (209) 772-9310  
3201 West Highway 12  
Burson, CA 95225  
Call To Worship Christian Fellowship (209) 772-3070  
P.O. Box 723  
Valley Springs, CA 95252-0723  
Christian Life Center (209) 536-5860  
21320 Old Sonora Columbia Road  
Sonora, CA 95370  
Church Of The Forty-Niners (209) 532-2441  
Jackson & Gold  
Columbia, CA 95310  
Church Of The Living Word (209) 293-4161  
P.O. Box 134  
Wilseyville, CA 95257-0134  
Church Of The Nazarene-Angels Camp (209) 736-2607  
642 Murphys Grade Road  
Angels Camp, CA 95222  
Country Cowboy Church (209) 588-1056  
19030 Standard Road  
Standard, CA 95373  
Foothill Christian Center (209) 532-5317  
18080 Blue Bell Road East  
Sonora, CA 95370-9737  
Grace Ambassador Ministries (209) 533-8432  
18158 Old Wards Ferry Road  
Tuolumne, CA 95379



Heritage Christian Church Of Sonora (209) 532-8550  
P.O. Box 3176  
Sonora, CA 95370-3176

Hillside Tabernacle (209) 928-1654  
P.O. Box 668  
Tuolumne, CA 95379-0668

Iglesia Apostolica De La Fe En Cristo Jesus (209) 736-9651  
1834 South Main Street  
Angels Camp, CA 95222

Lay Evangelism (209) 772-2563  
P.O. Box 155  
Valley Springs, CA 95252-0155

Mid-Sierra Vineyard Christian Fellowship (209) 536-0764  
14319 Mono Way Suite #8  
Sonora, CA 95370

New Hope Community Church - Church of the Nazarene (209) 533-3914  
PO Box 3186  
Sonora, CA 95370

Table Mountain Chapel (209) 533-2352  
19633 Rawhide Road  
Sonora, CA 95370-9415

Union Congregational Church (209) 736-4171  
1141 South Main  
Angels Camp, CA 95222-0186

Unitarian Universalist Fellowship of Tuolumne County (209) 533-8883  
P.O. Box 448  
Standard, CA 95373-0448

Unity Church Of Sonora (209) 532-3965  
P.O. Box 4074  
Sonora, CA 95370-4074

Vallecito Union Church (209) 736-0096  
P.O. Box 232  
Vallecito, CA 95251-0232



Presbyterian

Church of the '49ers - First Presbyterian Church (209) 532-2441  
11155 Jackson Street  
Columbia, CA 95310

Oak Hill Presbyterian Church (209) 532-3879  
14892 Peaceful Valley Road  
Sonora, CA 95370-2805



Seventh-day Adventist

Seventh-Day Adventist Church (209) 736-4636  
140 North Main Street  
Altaville, CA 95221

Seventh-Day Adventist Church (209) 754-3430  
399 Mariposa Street  
San Andreas, CA 95249

Seventh-Day Adventist Church (209) 962-5585  
19585 Elder Lane  
Groveland, CA 95321

Sonora Seventh-day Adventist Church (209) 532-3337  
 40 North Forest Road  
 Sonora, CA 95370



United Methodists  
 Community United Methodist Church (209) 772-2429  
 135 Laurel  
 Valley Springs, CA 95252-0246  
 Jamestown Methodist Church (209) 984-3521  
 18193 Seco Street  
 Jamestown, CA 95327  
 Seventh-Day Adventist Church (209) 532-1991  
 40 North Forest Road  
 Sonora, CA 95370-4801  
 Sonora United Methodist Church (209) 532-4850  
 90 Yaney Avenue  
 Sonora, CA 95370-4623  
 Soulsbyville United Methodist (209) 532-3231  
 19982 Community Drive  
 Soulsbyville, CA 95372-0928  
 Tuolumne United Methodist Church (209) 928-4223  
 Corner of Cedar and Baker  
 Tuolumne, CA 95379-0815  
 United Methodist Church (209) 928-4224  
 19251 Sunrise Drive  
 Tuolumne, CA 95379-9717



Religious Supplies  
 American Baptistry Company (209) 962-7712  
 13400 Clements Road  
 Groveland, CA 95321-9333  
 Angels Books & Gifts-Catholic (209) 736-2313  
 820 South Main Street  
 Angels Camp, CA 95222

#### **Baptist Hospital East**


Free to Join. 1000's of pictures & of  
 Beautiful Baptist Singles

#### **Local Churches**

Find local churches, synagogues & other  
 places of worship in DC.

Ads by Google

[Home](#) | [About Us](#) | [Feedback](#) | [Privacy Statement](#) | [Site Map](#)

Powered and Hosted by Mother Lode Internet 

© Copyright 2000-2007 Clarke Broadcasting Corporation.

All rights reserved