

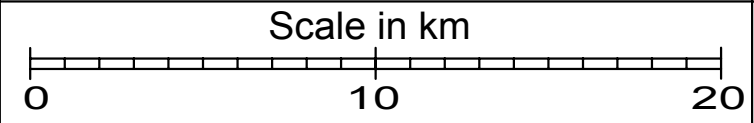
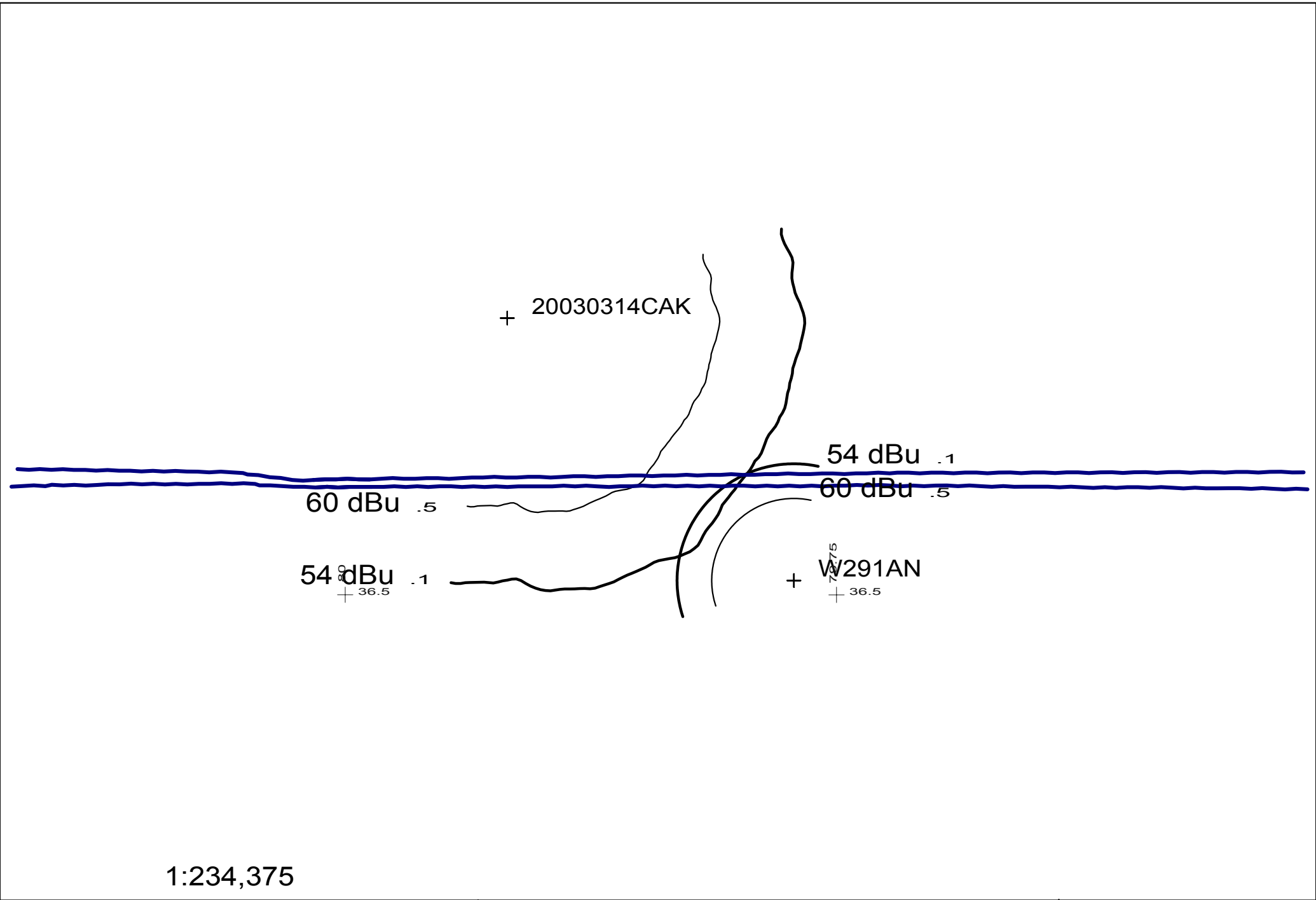
Educational Information Corporation

Raleigh, North Carolina

REFERENCE CH# 292D - 106.3 MHz, Pwr= 0.01 kw, HAAT=273.2 M, COR= 493 M DISPLAY DATES
 36 36 48 N Average Protected F(50-50)= 9.67 km DATA 05-10-03
 79 55 04 W Ave. F(50-10) 40 dBu= 32.1 54 dBu= 13.5 80 dBu= 2.0 100 dBu= .2 SEARCH 08-23-03

CH CITY	CALL	TYPE STATE	AZI. <--	DIST FILE #	LAT. LNG.	Pwr(kw) HAAT(M)	COR(M) INT(km)	PRO(km) LICENSEE	*IN* (Overlap in km)	*OUT*
289C1 Clemmons	RADD	ADD NC	220.5 40.5	46.97	36 17 30 80 15 30	100.000 -289	0 0.2	31.0	35.40	15.78
292A Gretna	WMNAFM	LIC CX VA	56.3 236.3	62.83 BMLH20020115AAG	36 55 31 79 19 50	6.000 23	259 31.7	15.8 Gary E. Burns	-15.03<	15.38
290D Martinsville	W290AK	LIC V VA	0.0 180.0	0.00 BLFT20020419ABH	36 36 48 79 55 04	0.010 203	485 0.2	8.3 Calvary Chapel Of Twin Fal	-8.95*<	-8.51*<
293D Bassett Forks	AP293	APP C VA	31.3 211.3	11.28 BNPFT20030314CAK	36 42 00 79 51 07	0.010 162	457 11.9	7.4 Educational Information Co	-7.59<	-7.94<
291D Eden	W291AN	LIC V NC	132.4 312.4	17.70 BLFT20001222ACG	36 30 21 79 46 18	0.020 -55	188 13.1	3.7 Calvary Chapel Of Twin Fal	3.05	0.90
294C2 Semora	ALLO	VAC NC	108.4 288.4	68.09 RM	36 25 07 79 11 49	50.000 -165	0 0.2	26.5	55.92	41.36
294C2 Semora	WKVE.C	CP CN NC	108.4 288.4	68.09 BPH19960307IC	36 25 07 79 11 49	50.000 150	315 0.2	52.2 Southern Entertainment Cor	52.64	15.69
One step upgrade from Channel 294A -- CP granted 971223 -- Petition for reconsideration filed 980129 -- Petition for reconsideration denied 980929										
292D Christiansburg	AP292	APP C VA	323.2 143.2	79.85 BNPFT20030310AKN	37 11 15 80 27 28	0.010 116	776 27.5	6.3 Positive Alternative Radio	50.79	46.03
289C Statesville	WFMX	LIC CN NC	219.3 39.3	111.85 BLH19871007KA	35 49 55 80 42 13	100.000 472	703 0.2	85.0 Mercury Broadcasting Compa	91.01	26.65
289C Statesville	RDEL	DEL NC	219.3 39.3	111.85	35 49 55 80 42 13	100.000 -231	0 0.2	31.0	100.21	80.66
289D Danville	W289AJ	LIC C VA	76.4 256.4	44.17 BLFT20010608AAK	36 42 20 79 26 14	0.010 149	368 0.2	7.1 Calvary Chapel Of Twin Fal	34.58	36.87
294A Semora	WKVE.A	APP C NC	87.0 267.0	64.63 BMLED20010502ABA	36 38 29 79 11 46	6.000 86	258 0.2	26.4 Educational Media Foundati	52.52	38.03
294A Semora	WKVE	LIC CN NC	87.0 267.0	64.63 BLH19960229KB	36 38 29 79 11 46	6.000 86	258 0.2	26.4 Southern Entertainment Cor	52.52	38.03
To Channel 294C2 per One-Step Construction Permit BPH-960307IC										
291A Vinton	WJJSFM	LIC NCX VA	355.3 175.3	74.70 BLH20020503AAG	37 17 03 79 59 14	6.000 43	426 12.3	19.0 Capstar Tx Limited Partner	37.96	43.36
290D Danville	W289AJ	CP CN VA	92.7 272.7	48.25 BPFT19970609TG	36 35 30 79 22 45	0.250 -21	158 0.2	7.1 Calvary Chapel Of Twin Fal	37.50	40.94
Translator for WBFJFM, Winston Salem, N.C.										
293C1 Salisbury	WEND	LIC CN NC	209.6 29.6	130.14 BLH19990302KD	35 35 32 80 37 44	84.000 316	552 12.3	71.8 Capstar Tx Limited Partner	17.23	46.09
291L1 Mount Zion	AP291	APP NC NC	162.3 342.3	61.41 BNPL20010615ARF	36 05 10 79 42 35	0.000 -238	0 12.9	0.0 M&m Community Development,	52.18	48.47
291L1 Mount Zion	AP291	APP NC NC	162.3 342.3	61.41 BNPL20010615ARF	36 05 10 79 42 35	0.000 -238	0 12.9	0.0 M&m Community Development,	52.18	48.47
291L1 Mount Zion	AP291	APP NC NC	162.3 342.3	61.41 BNPL20010615ARF	36 05 10 79 42 35	0.000 -238	0 12.9	0.0 M&m Community Development,	52.18	48.47
292A Bluefield	WHKX	LIC C VA	302.5 122.5	133.56 BLH20000412ACV	37 15 05 81 11 20	0.330 426	1224 26.9	28.5 Monterey Licenses, Llc	42.12	78.24
295A Bedford	WBWR	LIC NCN VA	17.7 197.7	82.48 BLH19921104KB	37 19 14 79 37 59	0.290 426	725 0.2	27.6 Bedford Radio Partners, Ll	72.35	54.66
293D Roanoke	AP293	APP C VA	348.2 168.2	71.22 BNPFT20030317EGS	37 14 29 80 04 55	0.010 226	817 12.5	8.8 Educational Media Foundati	50.01	49.98
290D Burlington	AP290	APP C NC	146.6 326.6	79.13 BNPFT20030311ABO	36 01 05 79 25 57	0.080 26	246 0.2	5.3 Positive Alternative Radio	69.13	73.58
293D Pulaski	AP293	APP C VA	301.9 121.9	86.87 BNPFT20030312APT	37 01 24 80 44 50	0.010 311	1048 11.4	10.3 Liberty University, Inc.	64.38	65.16

""Affixed to 'IN' or 'Out' values = site inside protected contour.
ERP and HAAT are on direct line to and from reference station. "<" = Contour Overlap



20030314CAK 292D .01kW 493M AMSL
W291AN 291D .02kW 188M AMSL

20030314CAK vs W291AN
G.F. Haertig - 0