

be highest and the terrain falls off rapidly to the north and to the southeast where power densities are likely to be negligible. Accordingly, we focused on the gravesite overlook area, museum, parking lot, walkways, roadways and near other towers.

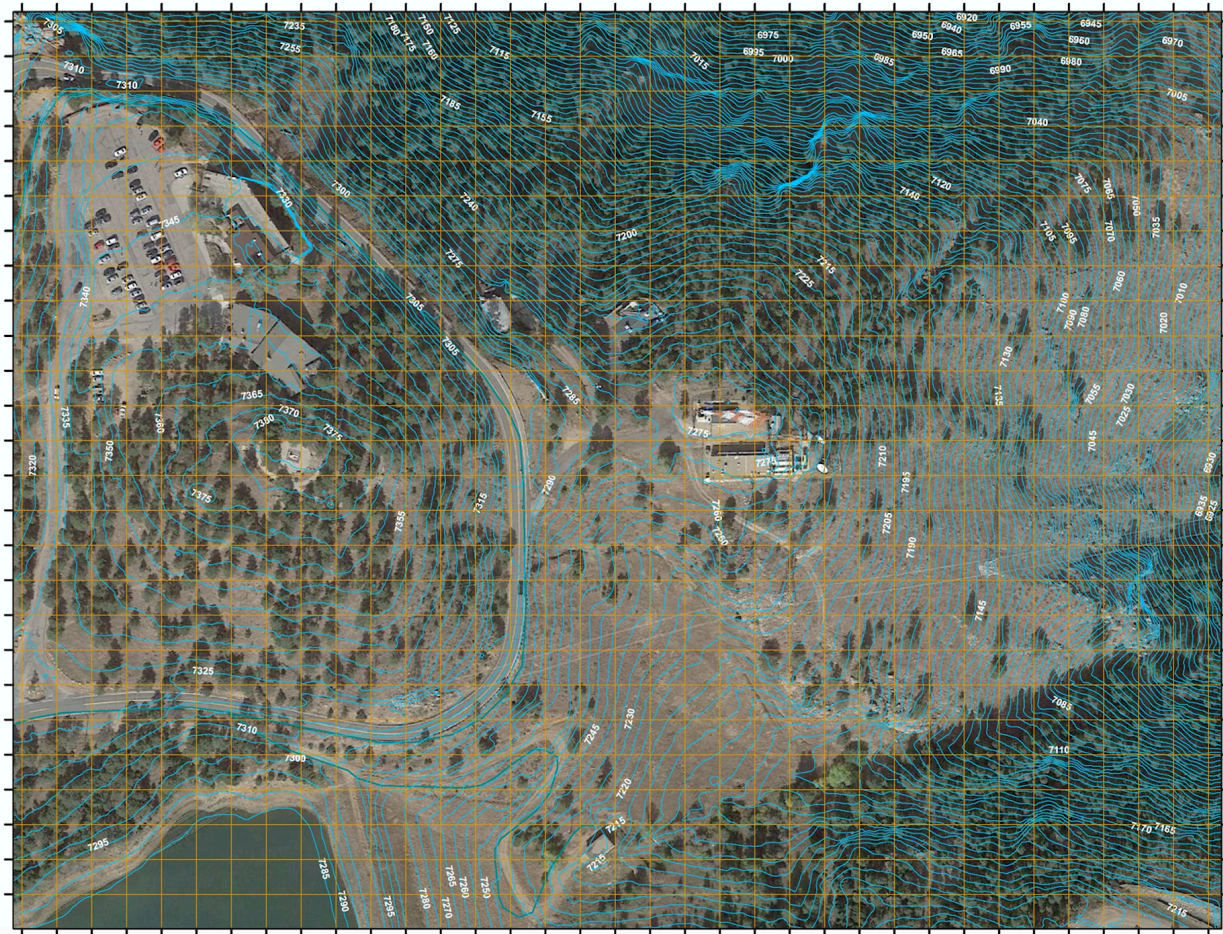


Figure 7 - Contour Map Overlaid on Google Earth Overhead Image (5' Contours)

During this survey, Pericle measured the 95 locations shown on the map of Figure 8 on the next page. The Tribune Tower is the red and white steel structure at right center in the image. The corresponding measurement values are found in Appendix A to this report. All measurements are well below the FCC public exposure limit. The peak measured value was 25.5% of the public limit (5.1% occupational), measured at the southwest edge of the path between the museum and the grave site (see Figure 8).