

EXHIBIT E-1
TECHNICAL STATEMENT
K267BF ESTES PARK, CO
MOUNTAIN COMMUNITY TRANSLATORS, LLC
FCC FORM 349
JANUARY 2009

This Technical Statement is filed in support of a minor change application for K267BF Estes Park, Colorado, facility ID 142146. K267BF is seeking to one step channel change from its current 267D to channel 269D. It also is seeking to increase its Effective Radiated Power from 6 watts to 10 watts, and also specify a non-directional antenna. It will continue to operate from its current licensed tower site with the same antenna heights.

Figure 1 is a detailed interference study for the proposed operation of K267BF on channel 269D. There will not be any prohibited outgoing interference produced by K267BF with the exception of KRKY-FM Estes Park, Colorado, facility ID 76780. KRKY-FM operates on channel 271A, or a second adjacent channel to channel 269D. However, a waiver of C.F.R. 74.1204 of the Commissions rules is hereby respectfully requested based on the fact that there is no population within the area of predicted interference.

The worse case interference contour for K267BF is 100 dBμ (F50,10). This contour with 10 watts ERP will extend 0.22 kilometers. There are no normally occupied structures within 220 meters of the proposed tower site. There are no open to the public roads or highways within a 220 meter radius of the tower site. The access to this site is gated and limited to equipment service personnel that occasionally work at the tower site.

Figure 2 shows that the KRKY-FM predicted signal strength at the K267BF tower site is 72.0 dbμ. The corresponding interference contour for K267BF would be 112.0 dbμ.

It should be noted that KRKY-FM operates an FM booster station, KRKY-FM2 Fort Collins, Colorado from this same tower site. It can be assumed that the interference contour towards this booster station will even be much less than the licensed station.

Figure 3 is the predicted 100 dbμ interference contour, which would be the worst case contour towards any second or third adjacent channel station. It shows that there will be zero persons located inside of this contour. Hence, there will not be any “actual” areas of interference.

Figure 4 is a U.S.G.S. 7.5 minute topographic map showing the 220 meter area around the tower site. It clearly shows that there are no homes or other buildings located inside of the proposed interference area. This area is very remote, with limited gated access only.

Figure 5 is a more detailed interference study conducted against KTNI-FM Strasburg, Colorado, on channel 268C, facility ID 38629.

Figure 6 is a more detailed interference study conducted against K269AE Boulder, Colorado, on channel 269D, facility ID 26927.

Figure 7 is a tabulation of the distances to the pertinent contours for the modified operation of K267BF.

The new proposed operation of K267BF Estes Park, Colorado was found to meet all of the Commission's rules and regulations for an FM translator station.

EXHIBIT E-1, FIGURE 1, INTERFERENCE STUDY
K267BF ESTES PARK, COLORADO, CHANNEL 269D
101.7 MHz, Pwr= 0.01 kW, HAAT= 0.0 M, COR= 2080 M
Average Protected F(50-50)= 3.15 km
Omni-directional

REFERENCE
40 29 37.0 N.
105 10 53.0 W.

DISPLAY DATES
DATA 01-17-09
SEARCH 01-18-09

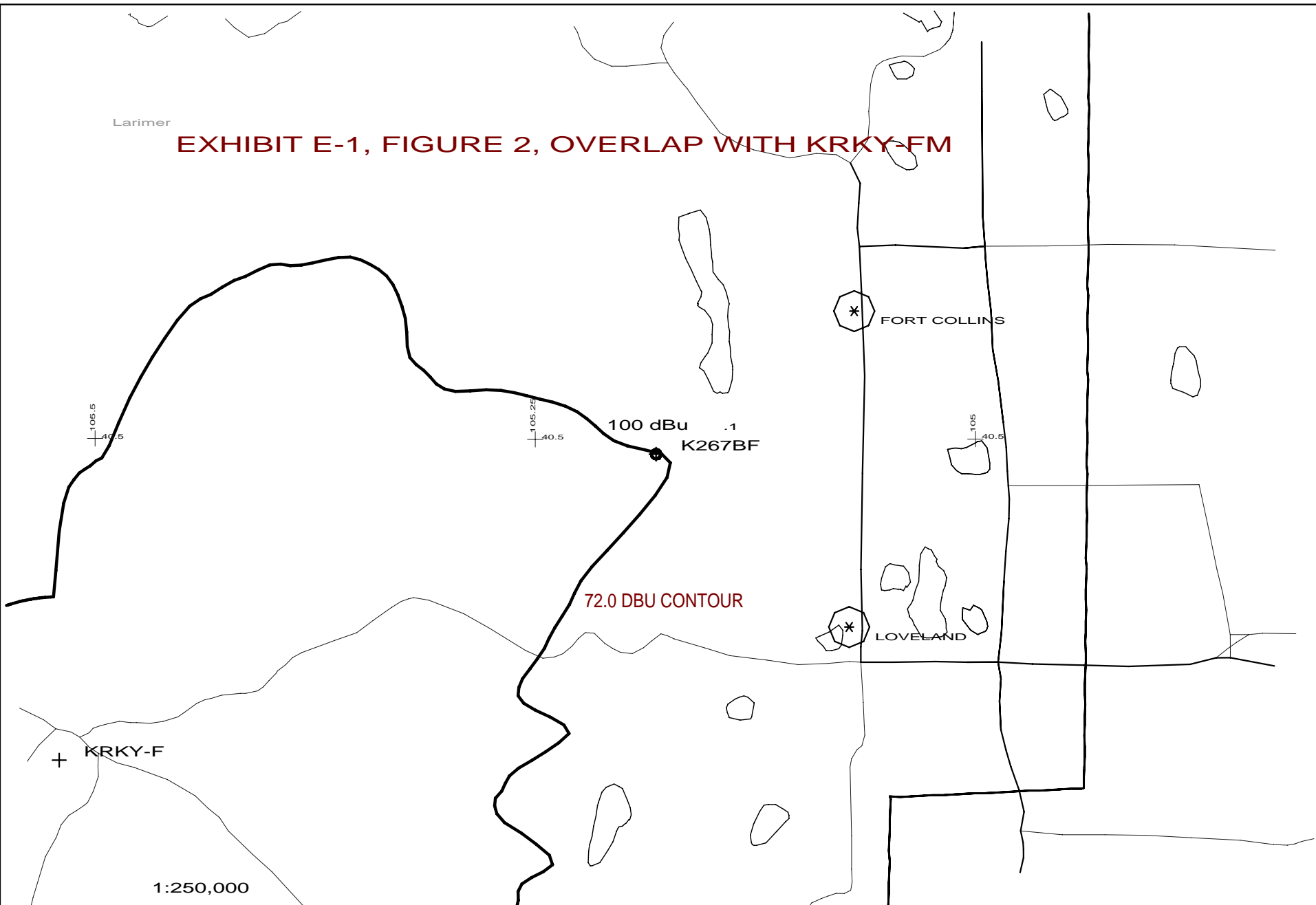
CH CITY	CALL	TYPE STATE	ANT AZI <--	DIST FILE #	LAT LNG	PWR (kW) HAAT (M)	INT (km) COR (M)	PRO (km) LICENSEE	*IN* (Overlap in km)	*OUT*
267D Estes Park	K267BF	LIC DV_ CO	0.0 0.0	0.0 BLFT20080904AAO	40 29 37.0 105 10 53.0	0.007 2080	0.1 2080	6.6 Mountain Community Transla	-10.7*	-6.8*
268C Strasburg	KTNI-FM	LIC NC_ CO	121.3 302.1	120.9 BMLH20081028ABX	39 55 22.0 103 58 18.0	97.000 625	138.3 2109	93.2 Kbru-fm, Llc, Debtor-in-po	-30.0*	7.9
271A Estes Park	KRKY-FM	LIC _HX CO	242.8 62.6	32.3 BLH20070117AAE	40 21 38.0 105 31 12.0	6.000 25	4.7 2739	57.1 Nrc Broadcasting, Inc.	21.7	-25.0*
271D Fort Collins	KRKY-FM2	LIC DC_ CO	0.0 0.0	0.0 BLFTB20070404AAP	40 29 37.0 105 10 53.0	0.065 2090	0.5 2090	16.5 Nrc Broadcasting, Inc.	-11.1*	-16.7*
269C1 Eagle	KTUN	LIC ZC_ CO	239.1 58.1	161.4 BLH20050915ADE	39 44 18.0 106 47 58.0	12.000 667	156.2 3171	70.1 Nrc Broadcasting Mountain	-2.8	66.9
270C2 Burns	KIGN	LIC _CN WY	31.7 212.1	81.6 BMLH19950920KD	41 07 01.0 104 40 07.0	50.000 150	70.7 1963	45.6 Gap Broadcasting Cheyenne	-2.0	16.1
269D Boulder	K269AE	LIC DHN CO	182.7 2.7	59.3 BLFT221	39 57 38.0 105 12 52.0	0.103 -58	42.8 1747	12.8 Cbs Radio Stations Inc.	4.2	3.7
266C Denver	KOSI	LIC DC_ CO	183.1 3.1	85.0 BLH20020118AAJ	39 43 45.0 105 14 06.0	100.000 495	9.1 2262	72.5 Entercom Denver License, L	63.2	12.3
268D Commerce City	KTNI-FM1	LIC DC_ CO	163.8 344.0	94.6 BLFTB20050802ABY	39 40 31.0 104 52 22.0	20.000 1766	59.4 1766	39.8 Kbru-fm, Llc	22.1	34.3
270C3 Centennial	KKHI	LIC NC_ CO	174.7 354.8	123.6 BLH20071207AAY	39 23 07.0 105 02 52.0	9.500 163	87.4 2226	58.5 Bustos Media Of Colorado L	23.7	46.1
269C1 Eagle	KTUN	CP _CX CO	241.4 60.3	164.0 BPH20061002BXC	39 46 32.0 106 51 48.0	10.500 696	128.5 3178	53.7 Nrc Broadcasting Mountain	25.1	83.3
269D Pinecliffe	K269FE	LIC DH_ CO	198.8 18.6	68.9 BLFT20071001ACF	39 54 21.0 105 26 32.0	0.100 2671	5.0 2671	0.7 Timothy C. Cutforth	52.2	26.7
270L1 Brighton	KAMV-LP	LIC _ CO	151.5 331.7	63.7 BLL20061207ABW	39 59 21.8 104 49 26.9	0.100 1538	3.2 1538	2.3 Alianza Ministerial Vision	43.3	38.4
272D Boulder	KCUV-FM2	LIC DV_ CO	180.6 0.6	53.5 BLFTB20070725AEH	40 00 43.0 105 11 16.0	0.250 1661	0.2 1661	5.1 Nrc Broadcasting, Inc.	41.1	48.2
269D Evergreen	K269CL	LIC DHN CO	185.5 5.4	97.1 BLFT19950811TB	39 37 24.0 105 17 24.0	0.035 354	11.8 2646	2.0 Citicasters Licenses, Inc.	72.8	46.0
272A Greenwood Village	KCUV	LIC DCX CO	183.2 3.1	84.6 BLH20070514AGO	39 43 59.0 105 14 10.0	1.000 238	1.9 2256	35.9 Nrc Broadcasting, Inc.	70.4	48.5
270D Golden	640689	APP DV_ CO	183.1 3.1	85.0 BNPFT20030314BOM	39 43 46.0 105 14 08.0	0.010 2244	14.3 2244	9.9 Mary Medicus	58.2	55.5
270D Granby	K270AL	LIC DC_ CO	232.0 51.5	81.6 BLFT20070329AOS	40 02 24.0 105 56 11.0	0.010 2530	2.6 2530	1.9 New Field Broadcasting, Ll	69.9	70.2
270D Sedalia	KKHI-FM2	LIC _C_ CO	174.7 354.8	123.6 BLFTB20031020AAB	39 23 06.0 105 02 51.0	0.099 2355	38.9 2355	25.2 Superior Broadcasting Of D	72.3	79.5
271D Laramie	K271BJ	CP DC_ WY	346.0 165.8	93.6 BNPFT20080620AEN	41 18 39.0 105 27 12.0	0.024 2742	0.3 2742	8.8 Mitchell A. Beranek	87.2	84.6
269D Dillon	KTUN-FM2	CP DV_ CO	217.8 37.2	120.9 BNPFTB20051031ABV	39 37 51.0 106 02 47.0	2.500 2755	8.0 2755	2.5 Nrc Broadcasting Mountain	102.2	89.7
269C2 Westcliffe	KXCL	APP ZHX CO	181.4 1.3	250.5 BPH20080606AES	38 14 18.0 105 14 58.0	17.500 258	142.1 2724	60.6 United States Cp, Llc	93.6	138.0
271A Breckenridge	KSMT	LIC ZCX CO	213.3 32.8	132.4 BLH20070504ABR	39 29 44.0 106 01 44.0	6.000 -64	1.8 3250	24.8 Nrc Broadcasting Mountain	120.5	107.3
269A Wheatland	KZEW	LIC _CN WY	6.4 186.6	173.5 BLH19850723KC	42 02 44.0 104 56 47.0	3.000 38	53.3 1503	13.2 Smith Broadcasting, Incorp	108.2	121.1
271C2 Hanna	KBDY	CP NCX WY	318.8 137.9	169.7 BMPH20080516AAW	41 38 00.9 106 31 32.1	0.630 1050	1.7 3409	50.3 Toga Radio Llc	164.8	119.2

Page # 2											
CH	CALL	TYPE	ANT	AZI	DIST	LAT	PWR (kW)	INT (km)	PRO (km)	*IN*	*OUT*
CITY		STATE		<--	FILE #	LNG	HAAT (M)	COR (M)	LICENSEE	(Overlap	in km)
267C0	KOZY-FM	LIC	_C_	36.7	187.8	41 50 23.0	100.000	8.5	65.0	166.1	122.6
Bridgeport		NE		217.6	BLH20010827AAD	103 49 36.0	339	1630	Legacy	Communications, Llc	
269C2	KXCL	RSV	___	187.6	284.7	37 57 04.0	50.000	115.0	26.5	157.6	207.6
Westcliffe		CO		7.4		105 36 50.0	150	3128	United States Cp, Llc		
267C1	NEW	CP	_CX	310.1	231.5	41 48 46.0	51.000	8.3	64.7	219.9	166.6
Sinclair		WY		128.7	BNPH20070502ABV	107 19 00.0	250	2400	Cochise Broadcasting, Llc		
272A	RADD	ADD	___	136.5	186.8	39 16 00.0	6.000	2.4	23.5	171.7	186.6
Limon		CO		317.4		103 41 15.0	100	1780	White Park Broadcasting		

Terrain database is NGDC 30 SEC , R= 73.215 qualifying spacings or FCC minimum Spacings in KM, M= Margin in KM
In & Out distances between contours are shown at closest points. Reference zone = 2, Co to 3rd adjacent.
Ant Column: (D= DA Standard, Z= DA 73.215, N= Not DA 73.215, _= Omni), Polarization (C,H,V,E), Beamtilt(Y,N,X)
"*"affixed to 'IN' or 'OUT' values = site inside protected contour.

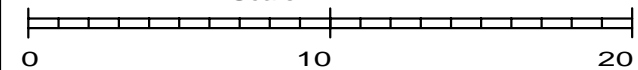
Larimer

EXHIBIT E-1, FIGURE 2, OVERLAP WITH KRKY-FM



1:250,000

Scale in km



K267BF 269D .01kW 2080M AMSL

N. Lat. 40 29 37 W. Lng. 105 10 53

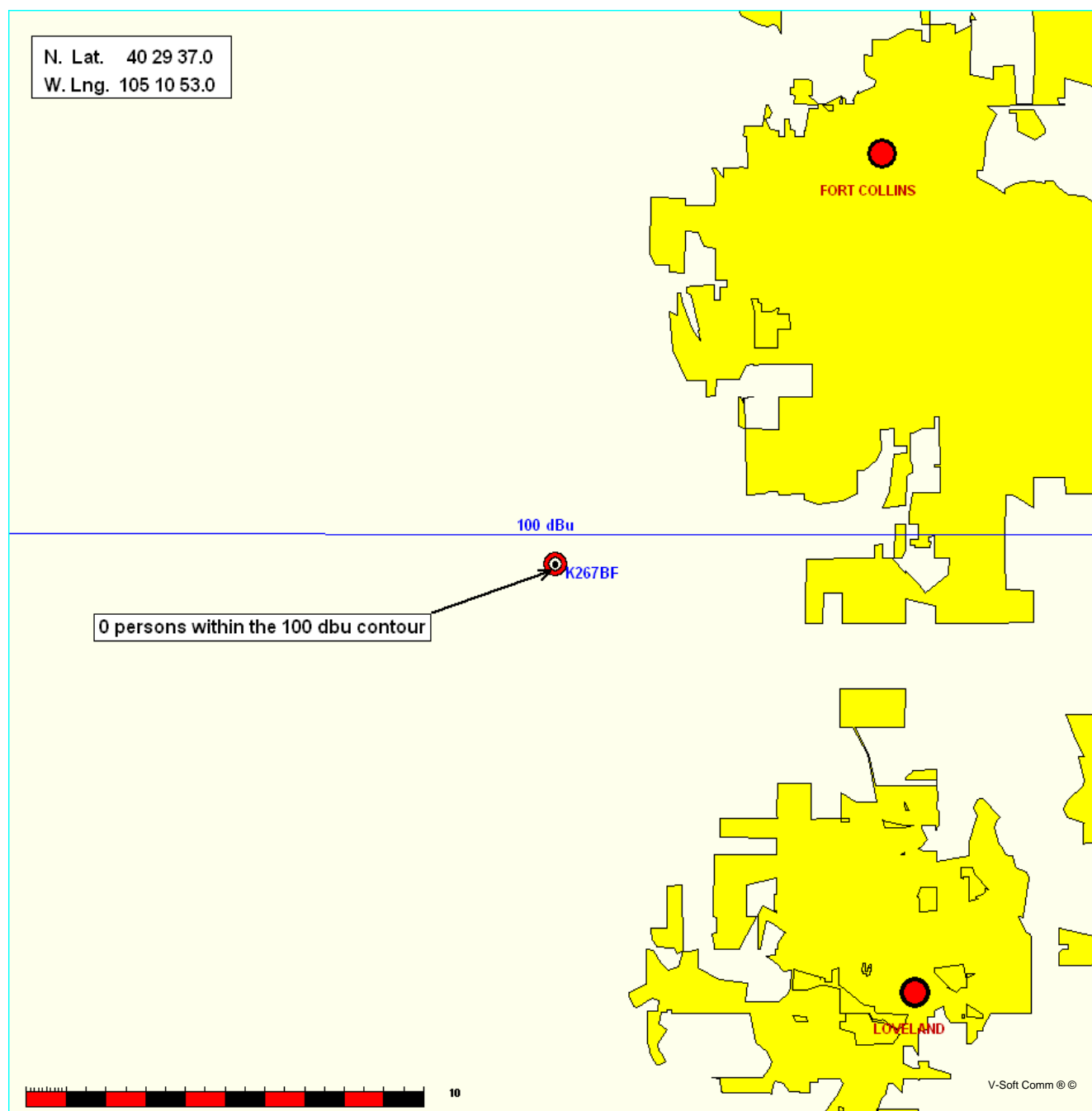
K267BF

- 01/09

EXHIBIT E-1, FIGURE 3, 100 dbu Coverage Map
K267BF ESTES PARK, COLORADO, CHANNEL 269D

Coverage Study - NGDC 30 SEC
01-18-2009

K267BF CH269 D 0.01 kW 2080M COR
Prot. = 60 dBu. Population = 0



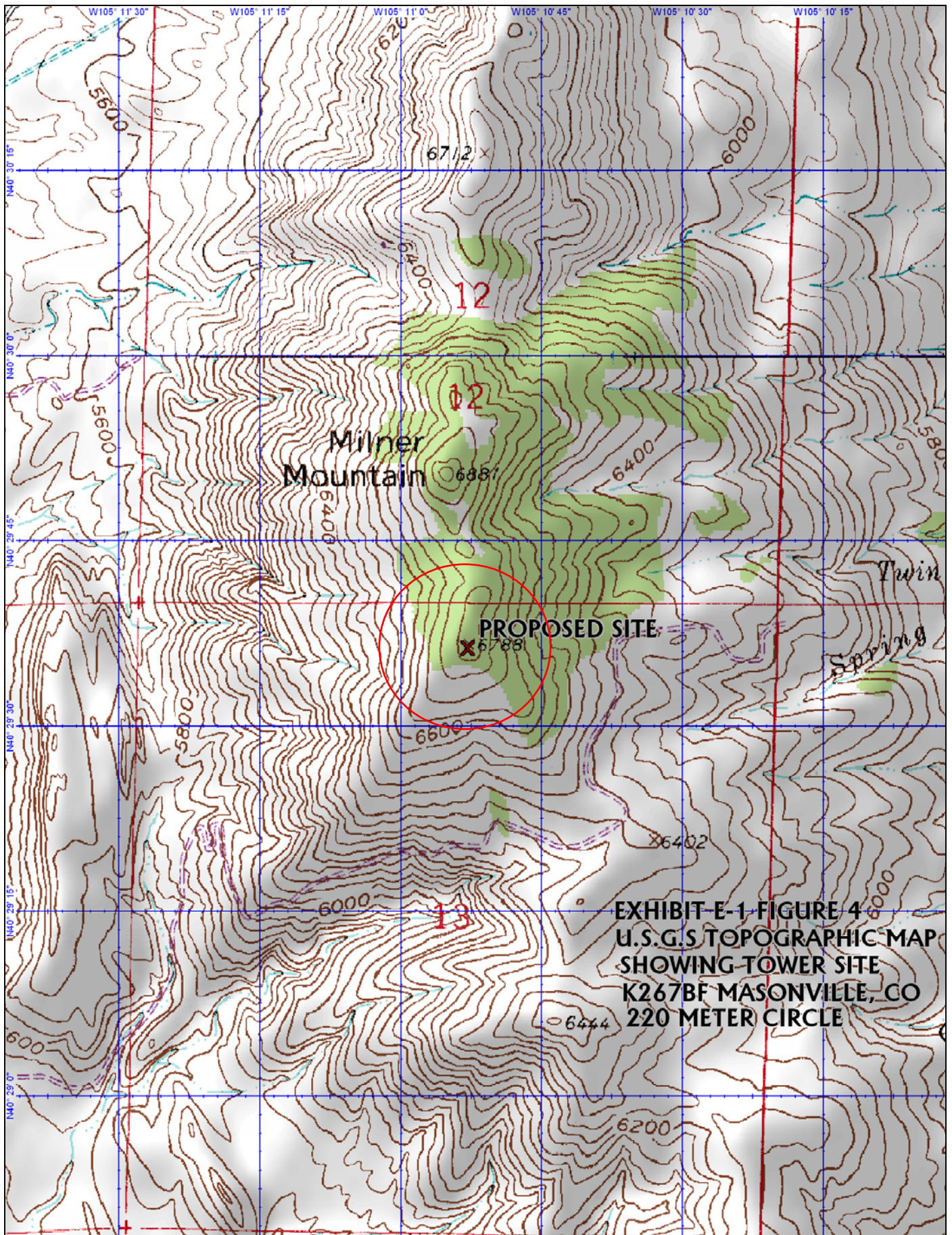


EXHIBIT E-1 FIGURE 4
 U.S.G.S TOPOGRAPHIC MAP
 SHOWING TOWER SITE
 K267BF MASONVILLE, CO
 220 METER CIRCLE

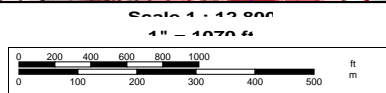


EXHIBIT E-1, FIGURE 5, INTERFERENCE STUDY, KTNi 268C
K267BF ESTES PARK, COLORADO, CHANNEL 269D

FMCommander Single Allocation Study - 01-18-2009 - NGDC 30 SEC
K267BF's Overlaps (In= -30.02 km, Out= 7.92 km)

K267BF CH 269 D

Lat= 40 29 37.0, Lng= 105 10 53.0

0.01 kW 0 M HAAT, 2080 M COR

Prot.= 60 dBu, Intef.= 54 dBu

KTNi-FM CH 268 C 73.215 N BMLH20081028ABX

Lat= 39 55 22.0, Lng= 103 58 18.0

97.0 kW 625 M HAAT, 2109 M COR

Prot.= 60 dBu, Intef.= 54 dBu

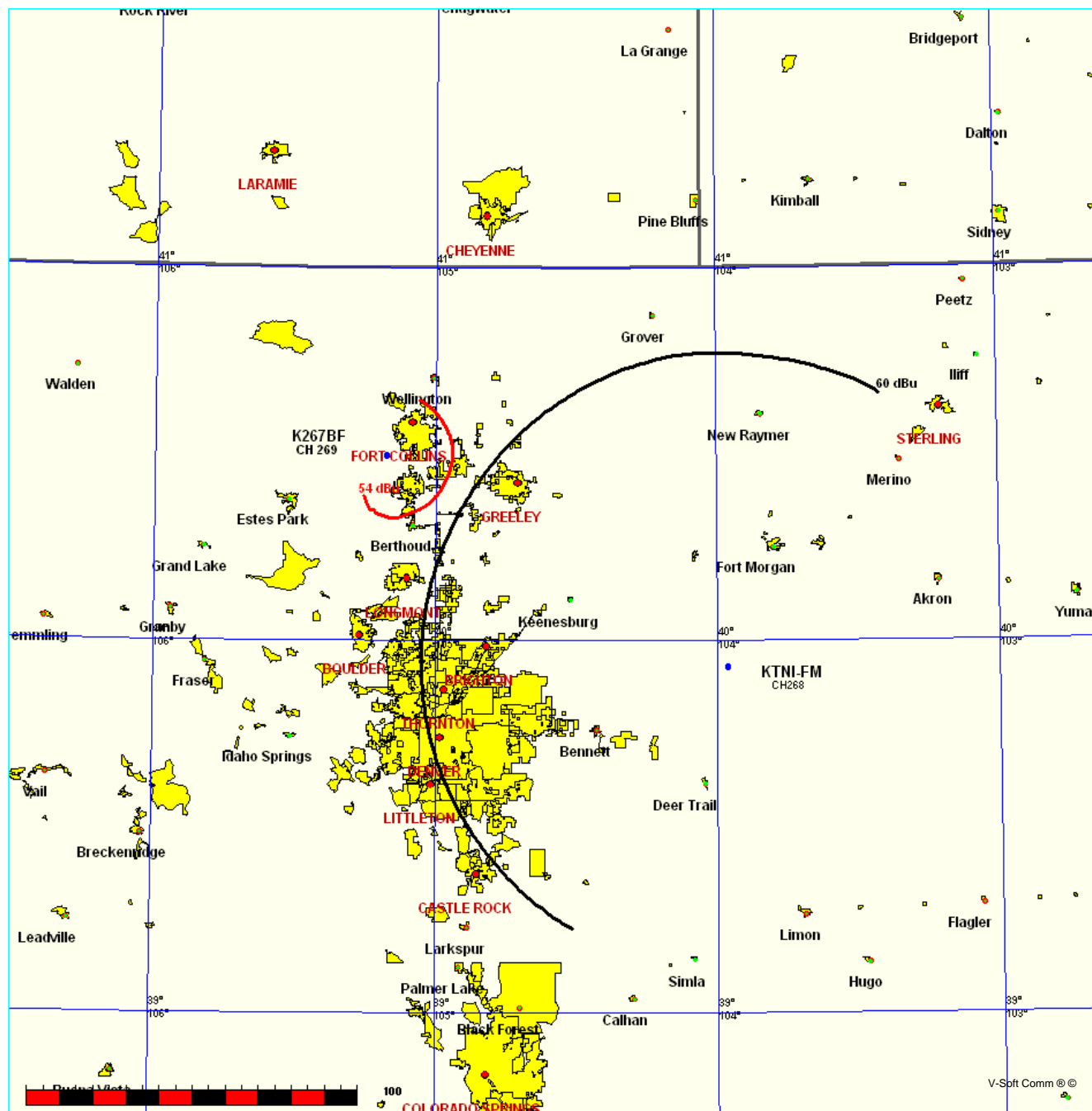


EXHIBIT E-1, FIGURE 6, INTERFERENCE STUDY, K269AE
K267BF ESTES PARK, COLORADO, CHANNEL 269D

FMCommander Single Allocation Study - 01-18-2009 - NGDC 30 SEC
K267BF's Overlaps (In= 4.17 km, Out= 3.67 km)

K267BF CH 269 D

Lat= 40 29 37.0, Lng= 105 10 53.0

0.01 kW 0 M HAAT, 2080 M COR

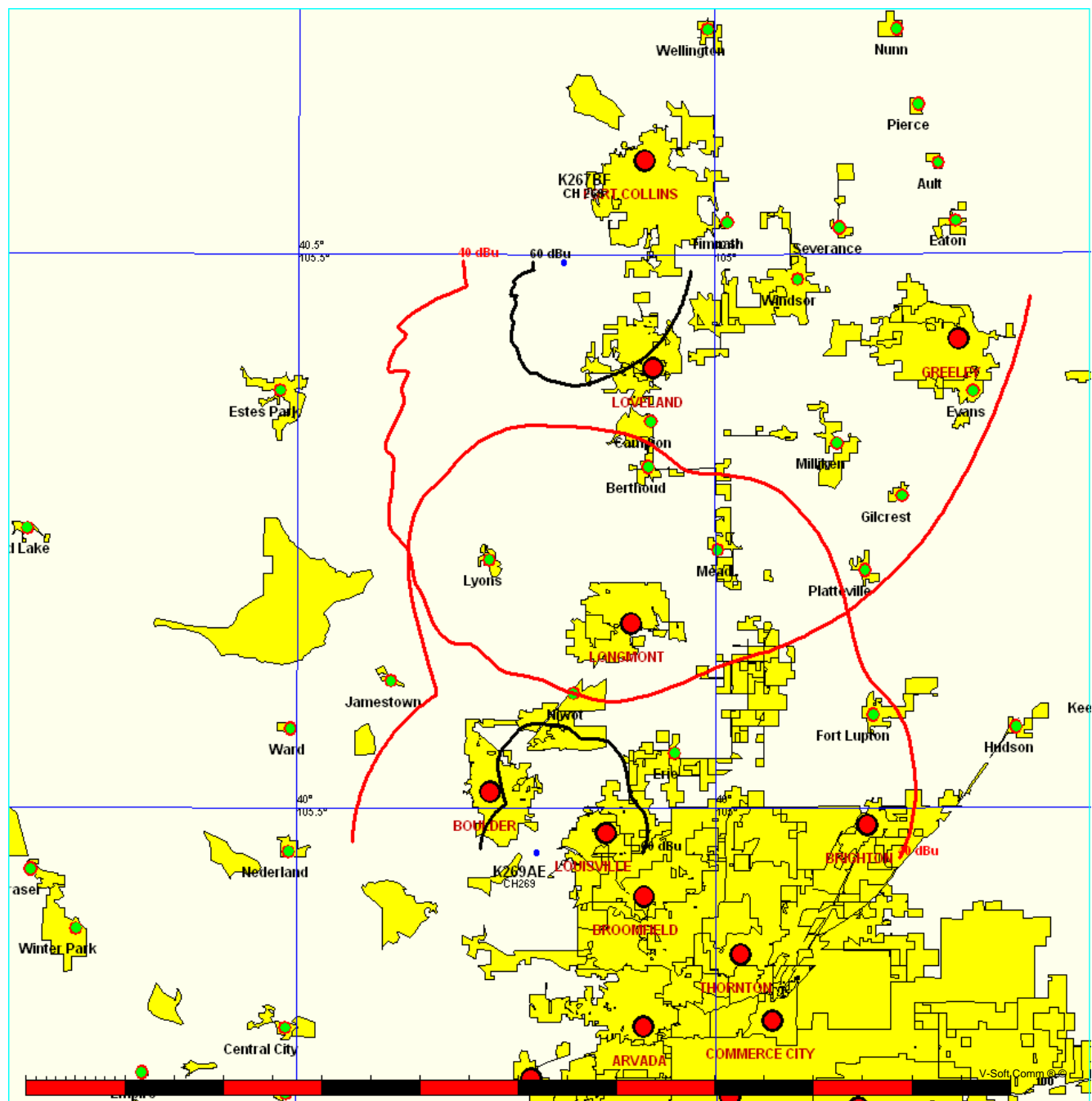
Prot.= 60 dBu, Intef.= 40 dBu

K269AE CH 269 D DA BLFT221

Lat= 39 57 38.0, Lng= 105 12 52.0

0.103 kW -58 M HAAT, 1747 M COR

Prot.= 60 dBu, Intef.= 40 dBu



Contour.out

N. Lat. = 402937.0 W. Lng. = 1051053.0
 HAAT and Distance to Contour
 FCC, FM 2-10 Mi, 51 pts Method - NGDC 30 SEC

EXHIBIT E-1, FIGURE 7, DISTANCE TO CONTOURS					
Azi.	AV EL	HAAT	dBk	60-F5	100-F1
000	1749.6	330.4	-20.00	10.60	0.22
030	1581.6	498.4	-20.00	12.56	0.22
060	1550.9	529.1	-20.00	12.84	0.22
090	1534.4	545.6	-20.00	13.02	0.22
120	1565.6	514.4	-20.00	12.70	0.22
150	1591.2	488.8	-20.00	12.48	0.22
180	1623.0	457.0	-20.00	12.22	0.22
210	1803.8	276.2	-20.00	9.72	0.22
240	1972.4	107.6	-20.00	6.07	0.22
270	2164.6	-84.6	-20.00	3.15	0.22
300	1924.9	155.1	-20.00	7.22	0.22
330	1902.0	178.0	-20.00	7.75	0.22

Ave El = 1747.00 M HAAT= 333.00 M AMSL= 2080