

Non-Interference Compliance

Regarding Facility id 151587

Channel 207

Description of Exhibit 12 Contents

This exhibit demonstrates that the proposed facility complies with contour overlap and interference protection provisions in all of the applicable rule sections and that this application for a construction permit is in full compliance with 47 C.F.R. § 74.1204.

Let it be noted that should any actual real world interference occur, the applicant acknowledges that it will promptly suspend operation of this translator in accordance with 47 C.F.R. § 74.1203.

Page 2 of this exhibit is an explanation of the method used to demonstrate compliance with contour overlap and interference provisions based on 47 C.F.R. § 74.1204(d), which states:

[A]n application otherwise precluded by this section will be accepted if it can be demonstrated that no actual interference will occur due to intervening terrain, lack of population or such other factors as may be applicable.

Page 3 contains a tabulation of the vertical radiation pattern of the proposed antenna and the minimum ground clearance of the interfering contour based on this pattern.

Pages 4 through 6 include a plot and a tabulation of the vertical radiation pattern for the proposed antenna provided by the antenna manufacturer.

Page 7 of this exhibit contains the tabulated data from the interference analysis, which shows all stations whose protected contours come within 50 km of the 34 dBμ F(50,10) contour of the proposed translator. These tabulated values were calculated using data from the FCC's CDBS files and 30 arc second terrain data. The column labeled "Adj" shows the number of channels difference between the entry and the proposed translator. The column labeled "Dist" shows the distance in km. The column labeled "Overlap" shows the area of contour overlap in square kilometers.

Page 8 of this exhibit is a portion of a USGS 1:24,000 scale 7.5 minute quadrangle at full scale with the calculated area of interference overlaid. The sheet includes the quadrangle name and measurement scale at the bottom-left corner (note: "Mt" refers to meters). The area of interference was calculated using the free space equation and 120 radials.

Compliance with 47 C.F.R. § 74.1204(d)

All authorized second and third adjacent stations with which the proposed translator has contour overlap are tabulated below. Column four show the station's signal level at the proposed translator's tower site, and column five gives the minimum value within the entire standard interfering contour of the proposed translator (100 dBμ for most classes, 94 for class B, 97 for class B1). The minimum second or third adjacent F(50,50) contour within the proposed translator's standard interfering contour was used to calculate the proposed translator's actual "worst-case" interfering contour.

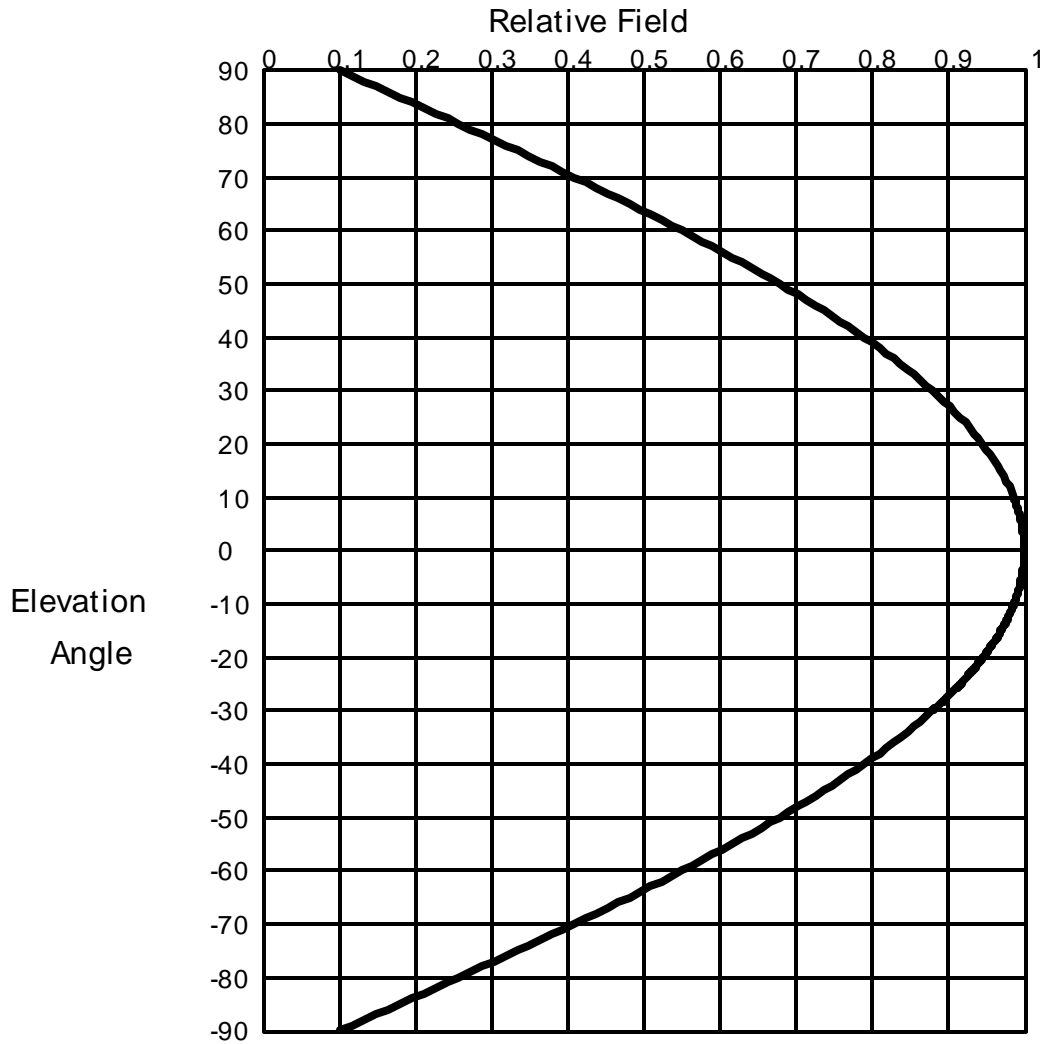
Application_id	File Number	Callsign	Contour at Tower	Min. Contour
206045	BLED19950131KE	WUSF	63.1	63
244302	BLED19970403KD	WYFE	76.5	76.3
Minimum F(50,50) Contour of Adjacent Station within Proposed Translator's Standard Interfering Contour				63

FCC 02-244 at Section II.A.5 states that "when demonstrating that 'no actual interference will occur due to . . . other factors,' pursuant to Section 74.1204(d), an applicant may use the undesired-to-desired signal ratio method." The undesired-to-desired ratio for second and third adjacent stations required by § 74.1204(a) is 40 dB. Since the minimum protected contour strength within the proposed translator's standard interference contour is **63 dBμ**, this makes the proposed translator's worst-case interfering contour **103 dBμ**. By the free-space equation, this contour is calculated to extend a maximum of **157 m** from the transmit antenna.

The maximum horizontal plane of the interfering contour was calculated for 120 radials and plotted on the pertinent portion of a USGS quadrangle (page 8 of this exhibit). However, the field strength of the proposed translator's antenna varies with angle of depression from horizontal. The antenna relative fields are tabulated on the following page at 5 degree increments, starting at 5 degrees below horizontal. Antenna relative field strength data was provided and certified by the manufacturer of the proposed antenna. Using a free-space calculation that neglects any loss due to reflection, the vertical ground clearance of the proposed translator's interference contour has been tabulated. As shown on the following page, the area of interference clears the tower ground level (TGL) by **268.3 m** at the lowest point. The applicant has taken into account USGS quadrangles and relevant aerial photography in stating that no structures, except possibly tower support structures, puncture the area of interference. Hence, in accordance with 47 C.F.R. § 74.1204(d) and the clarification provided by the FCC in the decision *Re: Living Way Ministries* (FCC 02-244), a lack of population has been demonstrated within the area of interference and this application is therefore in full compliance with 47 C.F.R. § 74.1204.

Antenna Manufacturer:	SWR
Antenna Model:	FM1
CORAGL:	350 m
Maximum ERP:	0.01 kW
Interfering Contour:	103 dBμ
Max Int. Contour Distance:	157 m
Min Ground Clearance:	268.3 m

Depression Angle Below Horizontal	Antenna Relative Field	ERP (watts)	Distance to Interfering Contour from Antenna (m)	Horizontal Distance of Interfering Contour from Tower (m)	Vertical Clearance of Interfering Contour above TGL (m)
5	.997	9.9	156.6	156.0	336.4
10	.986	9.7	154.8	152.5	323.1
15	.969	9.4	152.2	147.0	310.6
20	.946	8.9	148.6	139.6	299.2
25	.916	8.4	143.8	130.4	289.2
30	.879	7.7	138.0	119.5	281.0
35	.837	7.0	131.4	107.7	274.6
40	.789	6.2	123.9	94.9	270.4
45	.736	5.4	115.6	81.7	268.3
50	.679	4.6	106.6	68.5	268.3
55	.616	3.8	96.7	55.5	270.8
60	.550	3.0	86.4	43.2	275.2
65	.480	2.3	75.4	31.9	281.7
70	.408	1.7	64.1	21.9	289.8
75	.333	1.1	52.3	13.5	299.5
80	.256	0.7	40.2	7.0	310.4
85	.178	0.3	28.0	2.4	322.2
90	.100	0.1	15.7	0.0	334.3
Minimum Clearance above TGL:					268.3 m



Elevation Pattern

Scale: Linear

Systems With Reliability Inc.

Units: Field, Relative

CLIENT: *General*

Date: 11/10/03

ANTENNA TYPE: FM1/1

FREQUENCY: 98.1

PATTERN POL.: Circular

DIRECTIVITY(Peak): 0.883/ -0.539 dBd

Beam Tilt (Deg.) : 0

DIRECTIVITY(Horiz): 0.883/ -0.539 dBd

Null Fill(s)(%) : 0, 0, 0

Relative Field Tabulation

Elev. Angle	Rel. Fld(dB)	Elev. Angle	Rel. Fld(dB)	Elev. Angle	Rel. Fld(dB)
3.2	.999 (-0.012)	-4.4	.997 (-0.023)	-12.0	.98 (-0.173)
3.0	.999 (-0.011)	-4.6	.997 (-0.025)	-12.2	.98 (-0.178)
2.8	.999 (-0.009)	-4.8	.997 (-0.027)	-12.4	.979 (-0.184)
2.6	.999 (-0.008)	-5.0	.997 (-0.03)	-12.6	.978 (-0.19)
2.4	.999 (-0.007)	-5.2	.996 (-0.032)	-12.8	.978 (-0.196)
2.2	.999 (-0.006)	-5.4	.996 (-0.035)	-13.0	.977 (-0.203)
2.0	.999 (-0.005)	-5.6	.996 (-0.037)	-13.2	.976 (-0.209)
1.8	1.00 (-0.004)	-5.8	.995 (-0.04)	-13.4	.975 (-0.215)
1.6	1.00 (-0.003)	-6.0	.995 (-0.043)	-13.6	.975 (-0.222)
1.4	1.00 (-0.002)	-6.2	.995 (-0.046)	-13.8	.974 (-0.229)
1.2	1.00 (-0.002)	-6.4	.994 (-0.049)	-14.0	.973 (-0.235)
1.0	1.00 (-0.001)	-6.6	.994 (-0.052)	-14.2	.973 (-0.242)
.8	1.00 (-0.001)	-6.8	.994 (-0.055)	-14.4	.972 (-0.249)
.6	1.00 (0)	-7.0	.993 (-0.058)	-14.6	.971 (-0.256)
.4	1.00 (0)	-7.2	.993 (-0.062)	-14.8	.97 (-0.263)
.2	1.00 (0)	-7.4	.993 (-0.065)	-15.0	.969 (-0.271)
.0	1.00 (0)	-7.6	.992 (-0.069)	-15.2	.969 (-0.278)
-.2	1.00 (0)	-7.8	.992 (-0.073)	-15.4	.968 (-0.285)
-.4	1.00 (0)	-8.0	.991 (-0.076)	-15.6	.967 (-0.293)
-.6	1.00 (0)	-8.2	.991 (-0.08)	-15.8	.966 (-0.3)
-.8	1.00 (-0.001)	-8.4	.99 (-0.084)	-16.0	.965 (-0.308)
-1.0	1.00 (-0.001)	-8.6	.99 (-0.088)	-16.2	.964 (-0.316)
-1.2	1.00 (-0.002)	-8.8	.989 (-0.093)	-16.4	.963 (-0.324)
-1.4	1.00 (-0.002)	-9.0	.989 (-0.097)	-16.6	.962 (-0.332)
-1.6	1.00 (-0.003)	-9.2	.988 (-0.101)	-16.8	.962 (-0.34)
-1.8	1.00 (-0.004)	-9.4	.988 (-0.106)	-17.0	.961 (-0.348)
-2.0	.999 (-0.005)	-9.6	.987 (-0.11)	-17.2	.96 (-0.357)
-2.2	.999 (-0.006)	-9.8	.987 (-0.115)	-17.4	.959 (-0.365)
-2.4	.999 (-0.007)	-10.0	.986 (-0.12)	-17.6	.958 (-0.374)
-2.6	.999 (-0.008)	-10.2	.986 (-0.124)	-17.8	.957 (-0.383)
-2.8	.999 (-0.009)	-10.4	.985 (-0.129)	-18.0	.956 (-0.391)
-3.0	.999 (-0.011)	-10.6	.985 (-0.134)	-18.2	.955 (-0.4)
-3.2	.999 (-0.012)	-10.8	.984 (-0.14)	-18.4	.954 (-0.409)
-3.4	.998 (-0.014)	-11.0	.983 (-0.145)	-18.6	.953 (-0.418)
-3.6	.998 (-0.015)	-11.2	.983 (-0.15)	-18.8	.952 (-0.427)
-3.8	.998 (-0.017)	-11.4	.982 (-0.156)	-19.0	.951 (-0.437)
-4.0	.998 (-0.019)	-11.6	.982 (-0.161)	-19.2	.95 (-0.446)
-4.2	.998 (-0.021)	-11.8	.981 (-0.167)	-19.4	.949 (-0.456)

Systems With Reliability Inc.

Page 1 of 2

CLIENT: *General*

Date: 11/10/03

ANTENNA TYPE: FM1/1

FREQUENCY: 98.1

PATTERN POL.: Circular

DIRECTIVITY(Peak): 0.883/ -0.539 dBd

Beam Tilt (Deg.) : 0

DIRECTIVITY(Horiz): 0.883/ -0.539 dBd

Null Fill(s)(%) : 0, 0, 0

Relative Field Tabulation

Elev. Angle	Rel. Fld(dB)	Elev. Angle	Rel. Fld(dB)	Elev. Angle	Rel. Fld(dB)
-19.6	.948 (-0.465)	-27.2	.90 (-0.911)	-54.0	.629 (-4.027)
-19.8	.947 (-0.475)	-27.4	.899 (-0.924)	-55.0	.616 (-4.205)
-20.0	.946 (-0.485)	-27.6	.898 (-0.939)	-56.0	.603 (-4.39)
-20.2	.945 (-0.495)	-27.8	.896 (-0.953)	-57.0	.59 (-4.58)
-20.4	.944 (-0.505)	-28.0	.895 (-0.967)	-58.0	.577 (-4.778)
-20.6	.942 (-0.515)	-28.2	.893 (-0.981)	-59.0	.564 (-4.982)
-20.8	.941 (-0.525)	-28.4	.892 (-0.996)	-60.0	.55 (-5.193)
-21.0	.94 (-0.535)	-28.6	.89 (-1.01)	-61.0	.536 (-5.411)
-21.2	.939 (-0.546)	-28.8	.889 (-1.025)	-62.0	.523 (-5.638)
-21.4	.938 (-0.556)	-29.0	.887 (-1.04)	-63.0	.509 (-5.873)
-21.6	.937 (-0.567)	-29.2	.886 (-1.055)	-64.0	.495 (-6.116)
-21.8	.936 (-0.578)	-29.4	.884 (-1.07)	-65.0	.48 (-6.369)
-22.0	.934 (-0.589)	-29.6	.883 (-1.085)	-66.0	.466 (-6.631)
-22.2	.933 (-0.6)	-29.8	.881 (-1.101)	-67.0	.452 (-6.904)
-22.4	.932 (-0.611)	-30.0	.879 (-1.116)	-68.0	.437 (-7.187)
-22.6	.931 (-0.622)	-31.0	.871 (-1.195)	-69.0	.423 (-7.483)
-22.8	.93 (-0.633)	-32.0	.863 (-1.277)	-70.0	.408 (-7.791)
-23.0	.928 (-0.645)	-33.0	.855 (-1.363)	-71.0	.393 (-8.112)
-23.2	.927 (-0.656)	-34.0	.846 (-1.451)	-72.0	.378 (-8.448)
-23.4	.926 (-0.668)	-35.0	.837 (-1.543)	-73.0	.363 (-8.799)
-23.6	.925 (-0.68)	-36.0	.828 (-1.638)	-74.0	.348 (-9.167)
-23.8	.923 (-0.692)	-37.0	.819 (-1.737)	-75.0	.333 (-9.553)
-24.0	.922 (-0.704)	-38.0	.809 (-1.839)	-76.0	.318 (-9.959)
-24.2	.921 (-0.716)	-39.0	.799 (-1.944)	-77.0	.302 (-10.387)
-24.4	.92 (-0.728)	-40.0	.789 (-2.054)	-78.0	.287 (-10.839)
-24.6	.918 (-0.74)	-41.0	.779 (-2.167)	-79.0	.272 (-11.317)
-24.8	.917 (-0.753)	-42.0	.769 (-2.283)	-80.0	.256 (-11.826)
-25.0	.916 (-0.765)	-43.0	.758 (-2.404)	-81.0	.241 (-12.367)
-25.2	.914 (-0.778)	-44.0	.747 (-2.529)	-82.0	.225 (-12.946)
-25.4	.913 (-0.791)	-45.0	.736 (-2.658)	-83.0	.21 (-13.569)
-25.6	.912 (-0.803)	-46.0	.725 (-2.791)	-84.0	.194 (-14.241)
-25.8	.91 (-0.816)	-47.0	.714 (-2.928)	-85.0	.178 (-14.97)
-26.0	.909 (-0.83)	-48.0	.702 (-3.071)	-86.0	.163 (-15.768)
-26.2	.908 (-0.843)	-49.0	.69 (-3.217)	-87.0	.147 (-16.648)
-26.4	.906 (-0.856)	-50.0	.679 (-3.369)	-88.0	.131 (-17.627)
-26.6	.905 (-0.87)	-51.0	.666 (-3.525)	-89.0	.116 (-18.733)
-26.8	.903 (-0.883)	-52.0	.654 (-3.687)	-90.0	.10 (-20)
-27.0	.902 (-0.897)	-53.0	.642 (-3.854)	90.0	.00 (-50)

Systems With Reliability Inc.

Page 2 of 2

CLIENT: *General*

Date: 11/10/03

ANTENNA TYPE: FM1/1

FREQUENCY: 98.1

PATTERN POL.: Circular

DIRECTIVITY(Peak): 0.883/ -0.539 dBd

Beam Tilt (Deg.) : 0

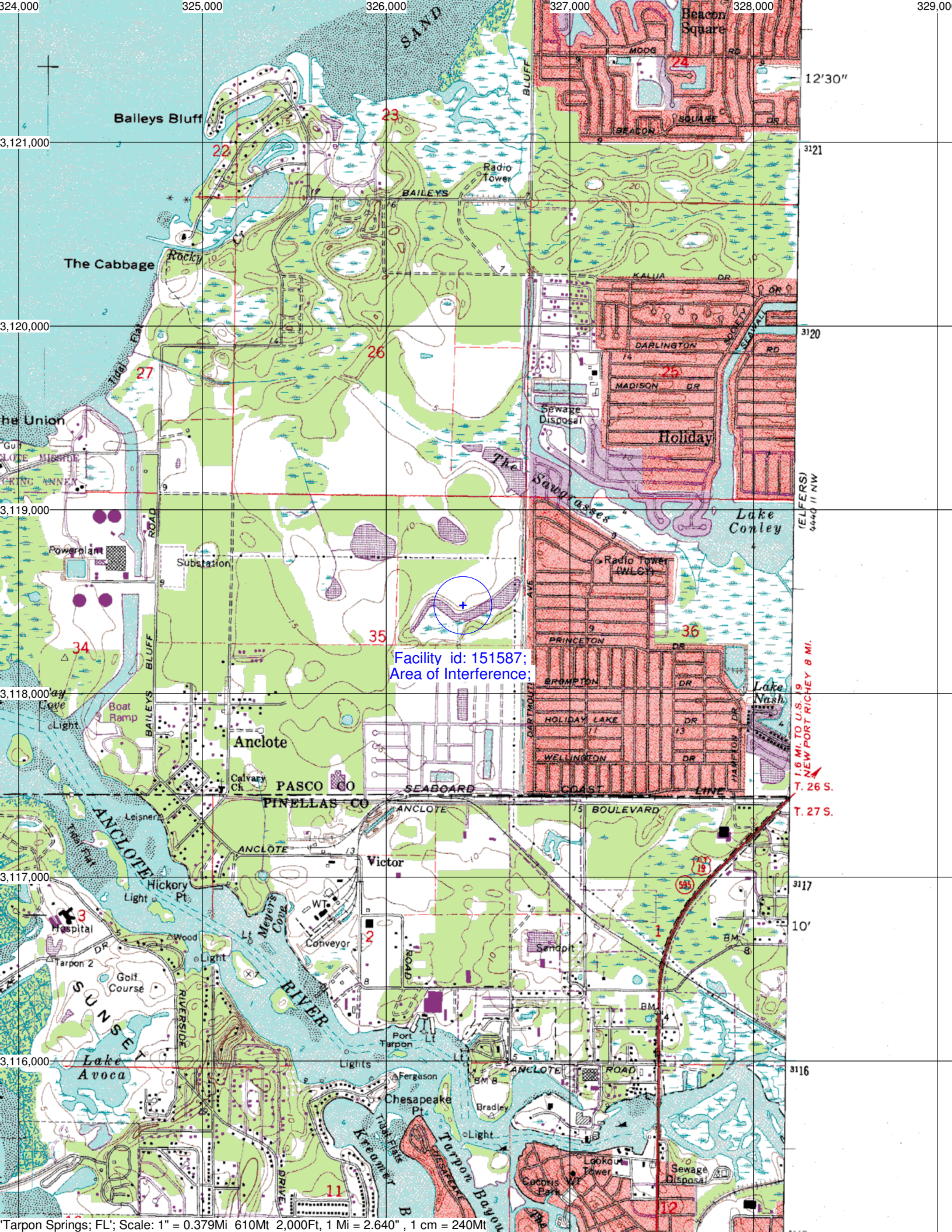
DIRECTIVITY(Horiz): 0.883/ -0.539 dBd

Null Fill(s)(%) : 0, 0, 0

Adjacent Channel Study
For Station W260AV, Facility_id: 151587

Co-channel through third adjacent:

Application_id	Facility_id	Prefix	ARN	Call	Licensee	Class	City	State	Status	ERP	RCMSL	Channel	Adj	Dist	Overlap
244302	5173	BLED	19970403KD	WYFE	BIBLE BROADCASTING NETWORK INC.	C1	TARPON SPRINGS	FL	LIC	60	143	205	2	23.6	0.0597
206045	69122	BLED	19950131KE	WUSF	UNIVERSITY OF S. FLORIDA	C1	TAMPA	FL	LIC	71	307	209	2	62	0.0597
1124005	89697	BPED	20060126AAC	WKFA	FLORIDA PUBLIC RADIO, INC.	A	ST. CATHERINE	FL	CP	4	112	207	0	78.2	0
1005656	89697	BLED	20040729AVG	WKFA	FLORIDA PUBLIC RADIO, INC.	A	ST. CATHERINE	FL	LIC	0.1	112	207	0	78.2	0
1169584	27291	BXPED	20070129APH	WMYZ	CENTRAL FLORIDA EDUCATIONAL FOUNDATION,	C3	CLERMONT	FL	CP	1.15	127.9	204	3	113.5	0
598877	27291	BLED	20020311AAU	WMYZ	HISPANIC BROADCAST SYSTEM, INC.	C3	CLERMONT	FL	LIC	5.5	147	204	3	113.8	0
609993	64255	BMLED	20040621AAG	WSMR	NORTHWESTERN COLLEGE	C2	SARASOTA	FL	LIC	50	144	206	1	126.5	0
1110081	9714	BPED	20050922AAC	WKSG	DAYSTAR PUBLIC RADIO, INC.	C2	CEDAR CREEK	FL	CP	26	126	208	1	141.5	0
667471	9714	BLED	20030618AAU	WKSG	DAYSTAR PUBLIC RADIO, INC.	C2	CEDAR CREEK	FL	LIC	30	126	208	1	141.5	0



Facility id: 151587;
Area of Interference;