

TECHNICAL EXHIBIT  
APPLICATION FOR CONSTRUCTION PERMIT  
MULTICULTURAL RADIO BROADCASTING LICENSEE, LLC  
RADIO STATION WWRU  
JERSEY CITY, NEW JERSEY

January 5, 2011

1660 KHZ 10 KW U DA-2

TECHNICAL EXHIBIT  
APPLICATION FOR CONSTRUCTION PERMIT  
MULTICULTURAL RADIO BROADCASTING LICENSEE, LLC  
RADIO STATION WWRU  
JERSEY CITY, NEW JERSEY

1660 KHZ 10 KW U DA-2

Table of Contents

Technical Narrative

Figure 1

Site Locations

TECHNICAL EXHIBIT  
APPLICATION FOR CONSTRUCTION PERMIT  
MULTICULTURAL RADIO BROADCASTING LICENSEE, LLC  
RADIO STATION WWRU  
JERSEY CITY, NEW JERSEY

1660 KHZ 10 KW U DA-2

Technical Narrative

The technical exhibit of which this narrative is part has been prepared on behalf of Multicultural Radio Broadcasting Licensee, LLC, licensee of AM broadcast station WWRU at Jersey City, New Jersey. WWRU is licensed as a Class B station for operation on 1660 kilohertz with unlimited power of 10 kilowatts operating with a two-tower directional antenna during daytime and a four-tower directional antenna during nighttime hours. By means of this present application, the licensee proposes to update the nighttime transmitter site location coordinates. The construction permit to modify the daytime directional antenna parameters, BP-20091016ABT, is unaffected. No other changes are proposed with this application.

This update was recently found to be necessary by comparison of the licensed transmitter site coordinates - which date from when the station was first constructed - with coordinates that have been recently determined. The proposed change has no bearing on the allocation situation with regard to other stations, as WWRU has always operated from this site and no actual changes are being made to the licensed transmission system.

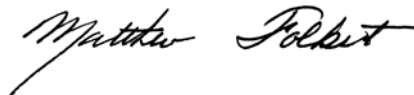
The NA27 array center coordinates from a recently determined location are:

40-49-13 N  
74-04-04 W

The current license states the nighttime station's coordinates as:

40-49-13 N  
74-04-09 W

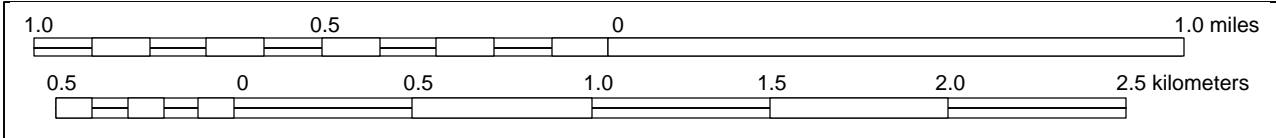
When comparing the licensed with the recently determined coordinates, a discrepancy of 0 second in the North Latitude and 5 seconds in West Longitude exists. Figure 1, shows the coordinates plotted on a 7.5 minute topographical map(Sheet 1) as well as a satellite photo(Sheet 2). As can be seen on Figure 1, the recently determined coordinates given for the survey are correct. It is requested that a construction permit be issued with the new set of nighttime coordinates but that the requirement for a proof of performance of the licensed directional pattern be suspended as the station's physical location has not changed and no changes are being made to the licensed antenna system.



Matthew Folkert  
du Treil, Lundin & Rackley, Inc.  
201 Fletcher Avenue  
Sarasota, Florida 34237

(941) 329-6000

January 5, 2011

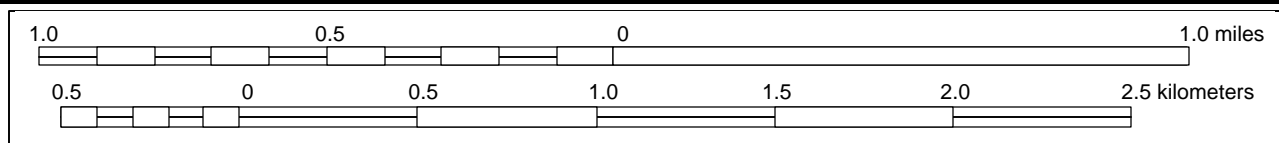
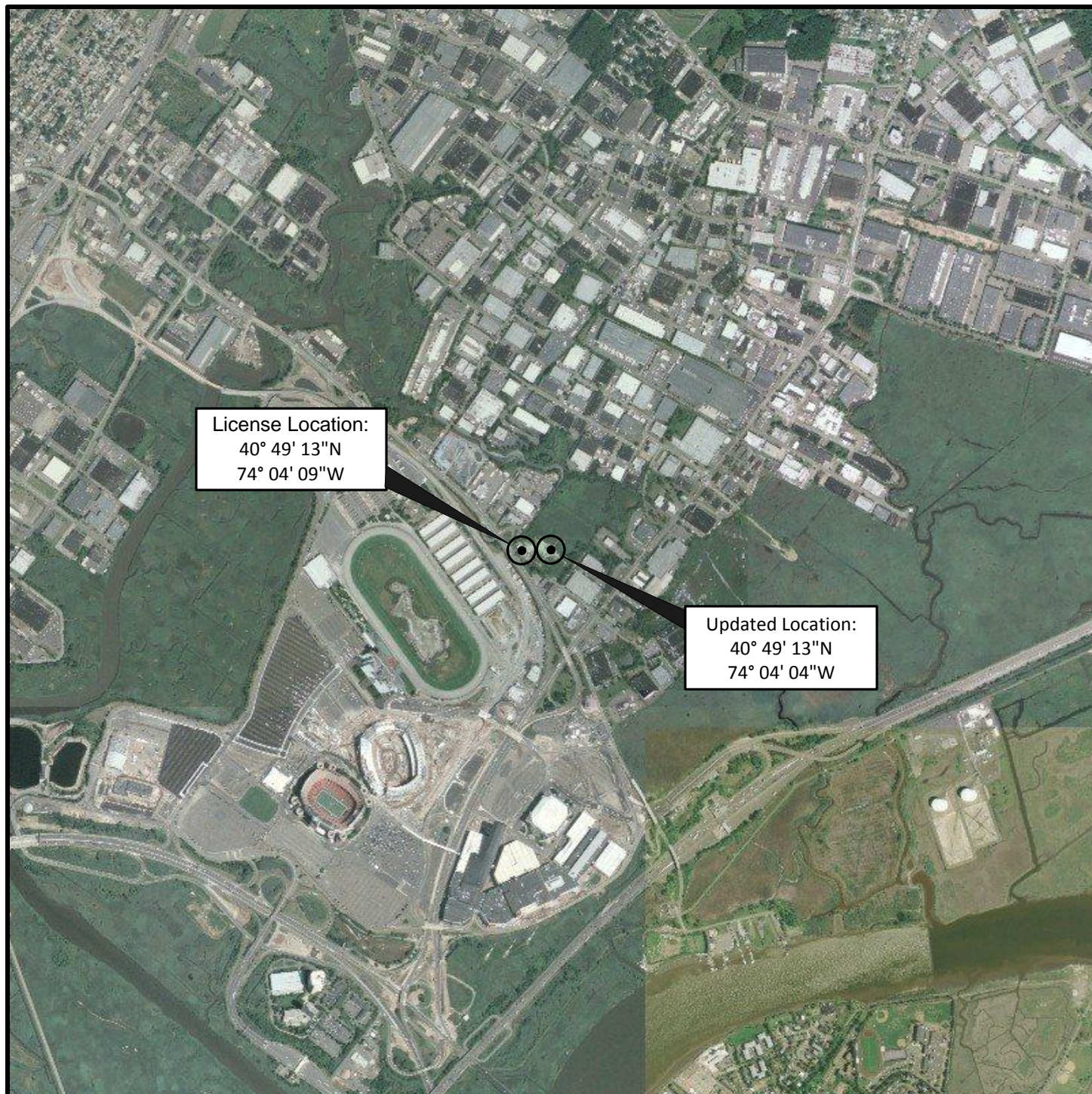


## SITE LOCATIONS - TOPO

RADIO STATION WWRU  
JERSEY CITY, NEW JERSEY  
1660 KHZ 10 KW U DA-2

du Treil, Lundin & Rackley, Inc. Sarasota, Florida





## **SITE LOCATIONS - AERIAL**

RADIO STATION WWRU  
JERSEY CITY, NEW JERSEY  
1660 KHZ 10 KW U DA-2

du Treil, Lundin & Rackley, Inc. Sarasota, Florida