

EXHIBIT A

ENGINEERING STATEMENT

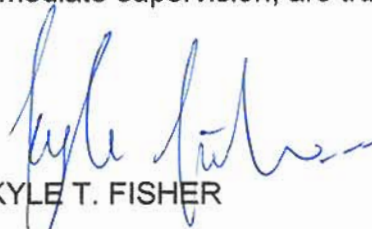
The engineering data contained herein have been prepared on behalf of NORTHERN CALIFORNIA EDUCATIONAL TELEVISION ASSOCIATION, INC., licensee of television translator K35DE, Channel 35 in Yreka, California, in support of this application for modification of Construction Permit BDISDTT-20060331AZQ, a digital displacement authorization on Channel 19. The purpose of this application is to reduce the effective radiated power and specify a new antenna.

It is proposed to mount a composite Scala antenna at the 21-meter level of an existing 31-meter communications tower. Exhibit B is a map upon which the predicted service contours are plotted. It is important to note that the newly proposed 48 dBu contour encompasses a significant portion of the Grade A contour that obtains from the licensed K35DE facility. Operating parameters for the proposed facility are tabulated in Exhibit C. An interference study is provided in Exhibit D, and a power density calculation follows as Exhibit E.

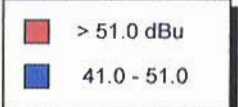
Since no change in overall height or location of the existing tower is proposed herein, the FAA has not been notified of this application. Due to the diminutive height of the tower and its proximity to the nearest airport runway, FCC antenna structure registration is not required. This conclusion is supported by the Commission's TOWAIR Program.

I declare under penalty of perjury that the foregoing statements and the attached exhibits, which were prepared by me or under my immediate supervision, are true and correct to the best of my knowledge and belief.

March 25, 2008


KYLE T. FISHER

CONTOUR POPULATION
51 DBU : 24,200



Smith and Fisher

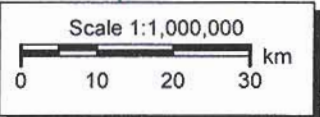
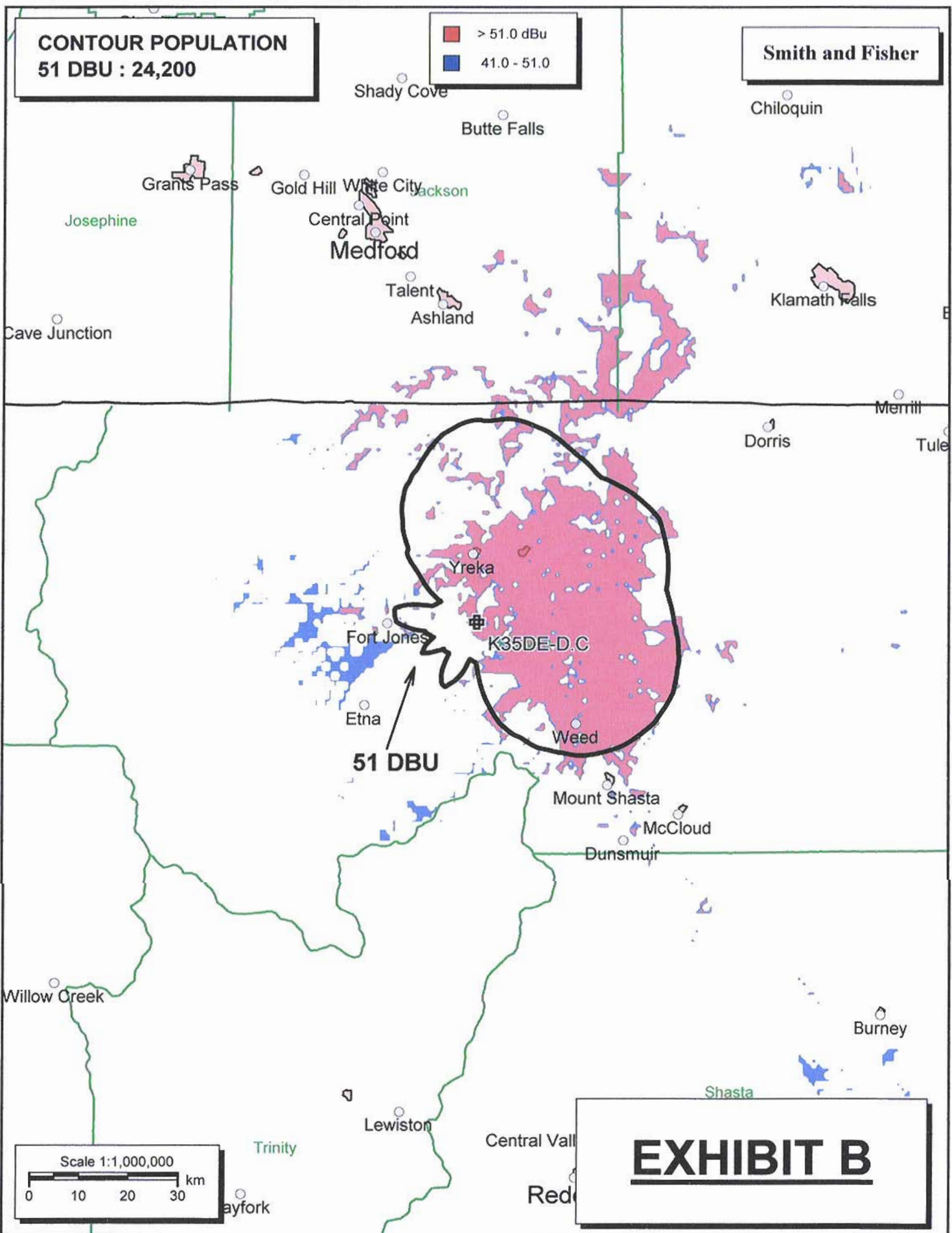


EXHIBIT B

EXHIBIT C

PROPOSED OPERATING PARAMETERS

PROPOSED K35DE-D
CHANNEL 19 - YREKA, CALIFORNIA
[MODIFICATION OF BDISDTT-20060331AZQ]

Transmitter Power Output:	30 watts
Transmission Line Efficiency:	66%
Antenna Power Gain – Toward Horizon:	6.1
Antenna Power Gain – Main Lobe:	6.1
Effective Radiated Power – Toward Horizon:	0.12 kw
Effective Radiated Power – Main Lobe:	0.12 kw
Transmitter Make and Model:	Type-accepted
Rated Output	30 watts
Transmission Line Make and Model:	RFS LCF12-50J
Length:	100 feet
Antenna Make and Model:	Scala 1x2 K723147
Orientation	60° T
Beam Tilt	NONE
Radiation Center Above Ground:	21 meters
Radiation Center Above Mean Sea Level:	1,816 meters

EXHIBIT D-1

LONGLEY-RICE INTERFERENCE STUDIES
PROPOSED K35DE-D
CHANNEL 19 – YREKA, CALIFORNIA
[MODIFICATION OF BDISDTT-20060331AZQ]

We conducted detailed interference studies using the Longley-Rice methodology contained in the Commission's *OET Bulletin No. 69*, with respect to all facilities of concern. The software utilizes a 1-square kilometer cell size, calculates signal strength at 0.1 kilometer increments along each radial studied, and employs the 1990 U.S. Census to count population within cells. In addition, the program does not attribute interference to the proposed facility in cells within the protected contour of the station under study where interference from another source (other than proposed K35DE-D) already is predicted to exist (also known as "masking"). The results of these studies are provided in Exhibit D-2. They conclude that the facility proposed herein causes no significant new interference to any of the potentially affected stations.

As a result, it is believed that the proposed K35DE-D facility complies with the requirements of Sections 74.709, 74.793(e), 74.793(f), 74.793(g), 74.793(h), 74.794(b) and 73.1030 of the Commission's Rules.

INTERFERENCE SUMMARY

PROPOSED K35DE-D
CHANNEL 19 – YREKA, CALIFORNIA
[MODIFICATION OF BDISDTT-20060331AZQ]

<u>Call Sign</u>	<u>Status</u>	<u>City, State</u>	<u>Ch.</u>	Longley-Rice Service <u>Population</u>	Unmasked Interference From <u>Proposed Facility</u>	<u>%</u>
------------------	---------------	--------------------	------------	--	---	----------

[NO STATIONS AFFECTED]

EXHIBIT E

POWER DENSITY CALCULATION

PROPOSED K35DE-D
CHANNEL 19 - YREKA, CALIFORNIA
[MODIFICATION OF BDISDTT-20060331AZQ]

Since the FCC considers the possible biological effects of RF transmissions in its environmental determinations, we have studied the matter with respect to this Yreka facility. Employing the methods set forth in *OET Bulletin No. 65* and considering a main-lobe effective radiated power of 0.12 kw, an antenna radiation center 21 meters above ground, and the vertical pattern of the Scala antenna, maximum power density two meters above ground of 0.00048 mw/cm^2 is calculated to occur 13 meters northeast of the base of the tower. Since this is only 0.1 percent of the 0.34 mw/cm^2 reference for uncontrolled environments (areas with public access) surrounding a facility operating on Channel 19 (500-506 MHz), this proposal may be excluded from consideration with respect to public exposure to nonionizing electromagnetic radiation.

Further, the station owner will take whatever precautionary steps are necessary, such as reducing power or leaving the air temporarily, to ensure that workers operating in the vicinity of the antenna are not exposed to excessive nonionizing radiation.