

W22AC CHANNEL 11 TRANSLATOR  
DIGITAL FLASHCUT AND  
DISPLACEMENT APPLICATION  
*HARTWELL & ROYSTON, GEORGIA*  
*(GEORGIA PUBLIC TELECOMMUNICATIONS COMMISSION)*

KESSLER AND GEHMAN ASSOCIATES, INC.  
TELECOMMUNICATIONS CONSULTING ENGINEERS

20060330

*Prepared by William T. Godfrey, Jr.*

KG&A

507 N.W. 60th Street, Suite C  
Gainesville, Florida 32607

**ENGINEERING TECHNICAL STATEMENT PREPARED BY WILLIAM T. GODFREY, JR. OF THE FIRM KESSLER AND GEHMAN ASSOCIATES, INC., TELECOMMUNICATIONS CONSULTING ENGINEERS IN CONNECTION WITH A DISPLACEMENT / DIGITAL CONVERSION APPLICATION FOR THE GEORGIA PUBLIC TELECOMMUNICATIONS COMMISSION TELEVISION TRANSLATOR W22AC (BLTT-20021204AAN), HARTWELL AND ROYSTON, GEORGIA.**

The firm Kessler and Gehman Associates, Inc. has been retained by the Georgia Public Telecommunications Commission (GPTC), Atlanta, GA to prepare the engineering portion of a displacement/digital conversion application for the W22AC TV translator facility.

**Background**

The W22AC TV translator (TX) facility is licensed to operate on analog Channel 22 with an ERP of 0.9 kW using a nondirectional Scala model SL-8 antenna (BLTT-20021204AAN) in the vicinity of Hartwell, GA. On January 26, 2006 the FCC released a Public Notice announcing a filing window for LPTV and TX digital companion channel applications beginning May 1, 2006. In response to the Public Notice, GPTC requested engineering services for its ten analog TV translators in preparation for the filing window.

**Request for Displacement**

Initial Longley-Rice interference studies revealed that the W22AC Channel 22 analog TX facility was predicted to receive 49.7% unmasked interference from the licensed WHNS-TV Channel 21 adjacent-channel facility located in the vicinity of Greenville, SC and 5.8% unmasked interference from the licensed WJCL-TV Channel 22 co-channel facility located in the vicinity of Savannah, GA (Exhibits 11 and 12). Based on the magnitude of inbound interference predicted to affect the operation of the licensed W22AC TX facility, GPTC requested to file a displacement application immediately in accordance with §73.3572(a)(4) of the FCC rules,

which allow a TX facility to file a displacement relief application for a change in output channel at any time (with the exception of a filing freeze).

### **Request for Digital Conversion**

The GPTC is in the process of awarding a government-funded contract to have its nine digital television broadcast facilities built. The contract includes tower upgrades, new transmitter buildings, transmitters, antennas, etc. Based on the budget for the Georgia digital conversion design-build project, there will not be sufficient funds available to build ten digital companion translators to operate simultaneously with GPTC's ten licensed analog translators. Therefore, in addition to its request for channel displacement, GPTC also respectfully requests authorization to convert the W22AC TX facility from analog to digital.

Accordingly, this application is being filed for authorization to convert the W22AC TX facility from analog to digital operation and for simultaneous channel displacement from the licensed analog Channel 22 to the proposed digital Channel 11.

### **Interference Studies**

Exhibit 11 is an inbound Longley-Rice interference study from all applicable surrounding full-service, Class A LPTV, LPTV and TV translator facilities to the licensed W22AC Channel 22 TX facility. Referring to Exhibit 11, it can be seen pictorially that the licensed W22AC Channel 22 TX facility is predicted to receive a tremendous amount of interference. The magenta and blue highlighted area within the W22AC Channel 22 facility's licensed 74.0 dBuV/m service contour represents population centroids predicted to receive interference from the licensed WHNS-TV Channel 21 adjacent-channel facility and the licensed WJCL-TV Channel 22 co-channel facility (see color key). Exhibit 12 is a population report that was generated from the inbound Longley-Rice study depicted in Exhibit 11 that was calculated using U.S. Census 1990 data. Referring to Exhibit 12, it can be seen that the WHNS-TV Channel 21 facility is predicted to cause 49.7% unmasked interference to the licensed W22AC Channel 22 TX facility and the

WJCL-TV Channel 22 facility is predicted to cause 5.8% unmasked interference to the licensed W22AC Channel 22 TX facility.

Exhibit 13 depicts the output of a detailed Longley-Rice interference study that was calculated using the FCC's digital LPTV software and the same make/model Sun Sparc computer work station in order to produce the exact same calculations to ensure that the 0.5% interference threshold for full-service TV/DTV/Class A protection and 2.0% interference threshold for LPTV/TV translator protection would not be exceeded. The population counts and interference calculations were calculated using U.S. Census 1990 data.

An in-core frequency search was performed initially to establish a list of all in-core digital channels with potential for interference-free operation for the W22AC TX facility. Digital Channel 11 was clearly the best looking channel available for the W22AC TX facility with respect to spacing and channel congestion. Referring to the detailed Longley-Rice study depicted in Exhibit 13, it can be seen that the proposed W22AC digital Channel 11 TX facility would not be predicted to cause more than 2.0% interference to digital or analog LPTV/TX stations and would not be predicted to cause more than 0.5% interference to digital or analog full-service stations or Class A stations.

## **Exhibits**

Exhibits 1 and 2 represent the proposed W22AC digital Channel 11 TX facility's administration data, antenna and antenna structure specifications.

Exhibit 3 depicts the profile view of the proposed antenna on the antenna structure with all the appropriate elevations.

Exhibit 4 depicts the proposed antenna azimuth pattern.

Exhibit 5 depicts the proposed antenna azimuth pattern tabulation.

Exhibit 6 depicts the proposed antenna elevation pattern.

Exhibit 7 depicts the proposed antenna elevation pattern tabulation.

Exhibit 8 depicts the location of the W22AC site on a 7.5-Minute (Series) Topographic map.

Exhibit 9 depicts the proposed W22AC digital Channel 11 TX facility's 48.0 dBuV/m noise limited contour and demonstrates that it would completely encompass the city of Hartwell and Royston, GA.

Exhibit 10 is a contour comparison map between the licensed W22AC analog Channel 22 TX facility and the proposed W22AC digital Channel 11 TX facility.

Exhibit 11 is an inbound, Longley-Rice interference map depicting the predicted interference to the licensed W22AC analog Channel 22 TX facility.

Exhibit 12 is a population report that was calculated from the inbound Longley-Rice study depicted in Exhibit 11 using U.S. Census 1990 data.

Exhibit 13 is a detailed Longley-Rice interference study that was calculated using the FCC's digital LPTV software on a Sun Sparc work station using U.S. Census 1990 data.

### **Environmental Impact**

The proposed W22AC digital Channel 11 TX facility would have no significant environmental impact as defined in §1.1307 of the FCC Rules. The transmitter, transmission line and antenna system would produce an ERP of 0.15 kW. Assuming, as a worst case scenario, that the maximum lobe of radiation was oriented toward the base of the tower, it would produce a power density six feet above the ground of  $0.0004 \text{ mW/cm}^2$ . This is only 0.04% of the Maximum Permissible Exposure (MPE) limits for Occupational/Controlled Exposure and only 0.18% of the MPE limits for General Population/Uncontrolled Exposure authorized by the American National

Standards Institute (ANSI). Since the operation of the proposed W22AC digital Channel 11 TX facility would not exceed 5.0% of the MPE limit for Occupational/Controlled Exposure or General Population/Uncontrolled Exposure at any point on the ground, the proposed W22AC TX facility would not be considered a “significant contributor” to the RF exposure environment pursuant to OET Bulletin 65, Edition 97-01. Therefore, contributions of exposure from other sources were not accounted for in this analysis. It is safe to conclude that the emissions would be insignificant and well within the maximum allowable requirements.

If other antennas are placed on the tower in the future, the applicant will cooperate with those users by reducing or completely terminating the power to the antenna when maintenance workers are in danger from the electromagnetic radiation emanating from the antenna.

### **Certification**

This technical statement was prepared by William T. Godfrey, Jr., Telecommunications Technical Consultant with Kessler and Gehman Associates, Inc. having offices in Gainesville, Florida and has been working in the field of radio and television broadcast consulting since 1998. He graduated from the University of North Florida with a Bachelor of Arts degree in Criminal Justice and a minor in Mathematics in 1993. As a Professional in the field of Telecommunications he states under penalty of perjury that the information contained in this report is true and correct to the best of his knowledge and belief.

  
KESSLER AND GEHMAN ASSOCIATES, INC.

  
WILLIAM T. GODFREY, JR.  
Telecommunications Technical Consultant

March 30, 2006

# W22AC Digital Channel 11 TV Translator

*Hartwell and Royston, Georgia*

## ENGINEERING SPECIFICATIONS

**A. Transmitter Site:**

Geographic coordinates (NAD27):

North Latitude ..... 34° 18' 45"  
West Longitude ..... 82° 56' 15"

Transmitter Site: Located 2.8 mi S of Hartwell  
1/2 mi E of Hickory Crossing Rd & Rte 172 intersection

**B. Main Studio Site Address: 260 14<sup>th</sup> Street N.W.  
Atlanta, GA 30318**

**C. Proposed Translator Facility:**

Digital Channel: Number: ..... 11  
Frequency: ..... 198-204 MHz  
Frequency Offset: ..... N/A  
Emission Mask: ..... Simple

**D. Antenna Height:**

Height of Site above Mean Sea Level (AMSL) ..... 249.3 M  
Overall Height of Structure Above Ground ..... 121.9 M  
(including all appurtenances)  
Overall Height of Structure above Mean Sea Level ..... 371.2 M  
(including all appurtenances)  
Height of Site above Average Terrain: ..... 33.1 M  
Antenna Height Radiation Center (R/C) Above Ground ..... 119.8 M  
Antenna Height R/C Above Mean Sea Level ..... 369.1 M  
Average of All Non-Odd Radials ..... 216.2 M  
Antenna Height R/C Above Average Terrain ..... 152.9 M

**E. System Parameters – Horizontal Polarization:**

Average Power Required: ..... 0.01 kW  
Input Power: ..... 0.01 kW  
Transmission Line Loss: ..... 1.44 dB  
Transmission Line Efficiency: ..... 71.7%  
Maximum Antenna Gain in Beam Maximum: ..... 12.30 dB  
Maximum Antenna Gain in Horizontal Plane: ..... 12.08 dB  
Maximum Effective Radiated Power: ..... -8.24 dBk  
In Beam Maximum: ..... 0.15 kW  
Maximum Effective Radiated Power: ..... -8.46 dBk  
In Horizontal Plane: ..... 0.14 kW

**W22AC Digital Channel 11 Translator**  
*Hartwell & Royston, Georgia*

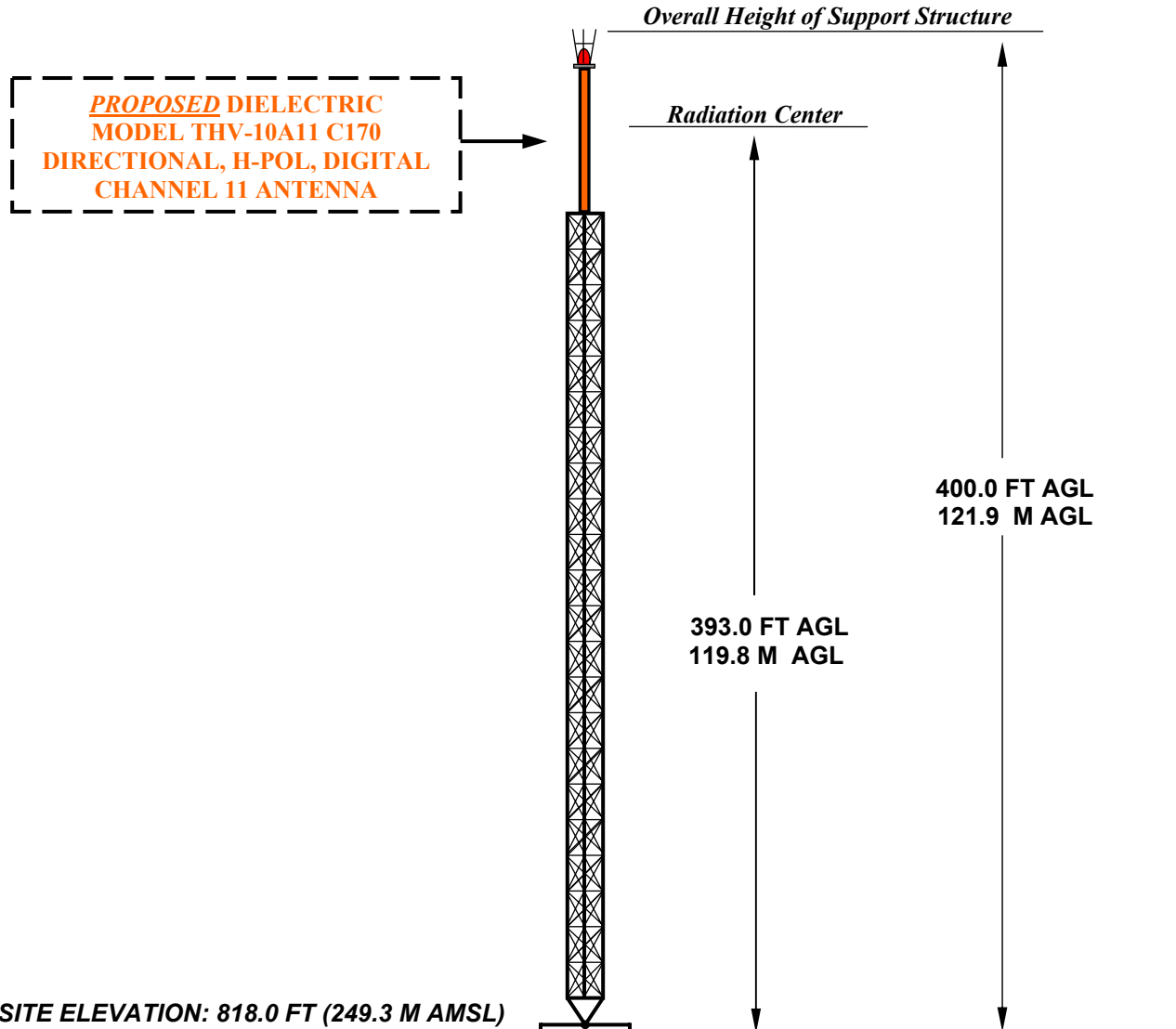
**DATA FOR PROPOSED DIRECTIONAL  
TRANSMITTING ANTENNA**

- A. **Antenna:** Dielectric Model THV-10A11 C170, Directional, Horizontally Polarized, Digital Channel 11 Antenna.
- B. **Electrical Beam Tilt:** 0.75°
- C. **Mechanical Beam Tilt:** None
- D. 

<b><u>Maximum Power Gain</u></b>	<b><u>Horizontal Polarization</u></b>
Maximum: 17.0	(12.30 dB)
Horizontal: 16.1	(12.08 dB)
- E. **Length:** 54.7 feet (16.7 meters)
- F. **Transmitter Power Output:** 0.01 kW
- G. **Antenna Input Power:** 0.01 kW
- H. **Null Fill:** 1.2%
- I. **Transmission Line:** 1-5/8" 50-ohm FLEXLine®
- J. **Transmission Line Loss:** 0.320 dB/100-feet
- K. **Total Transmission Line:** 450 feet (137.2 meters)
- L. **Transmission Line Attenuation:** 1.44 dB
- M. **Emission Mask:** Simple



## ANTENNA STRUCTURE ELEVATION VIEW



OVERALL HEIGHT AGL: ..... 121.9 M  
OVERALL HEIGHT AMSL: ..... 371.2 M  
RADIATION CENTER AGL: ..... 119.8 M  
RADIATION CENTER AMSL: ..... 369.1 M  
RADIATION CENTER HAAT: ..... 152.9 M  
AVERAGE OF NON-ODD RADIALS: ..... 216.2 M  
SITE ELEVATION HAAT: ..... 33.1 M

**COORDINATES: (NAD 27)**  
N. LATITUDE 34° 18' 45"  
W. LONGITUDE 82° 56' 15"  
**Antenna Structure Registration Number:**  
1018778  
**FAA Aeronautical Study Number:**  
N/A

**NOTE: NOT TO SCALE**

**KESSLER AND GEHMAN**  
TELECOMMUNICATIONS CONSULTING ENGINEERS  
507 N.W. 60th Street, Suite C  
Gainesville, Florida 32607

**W22AC DIGITAL CHANNEL 11**  
**HARTWELL & ROYSTON, GEORGIA**  
20060330 EXHIBIT 3



Date  
Call Letters  
Location  
Customer  
Antenna Type

23 Mar 2006  
W22AC Channel 11  
Hartwell & Royston, GA  
GPTV  
THV-10A11 C170

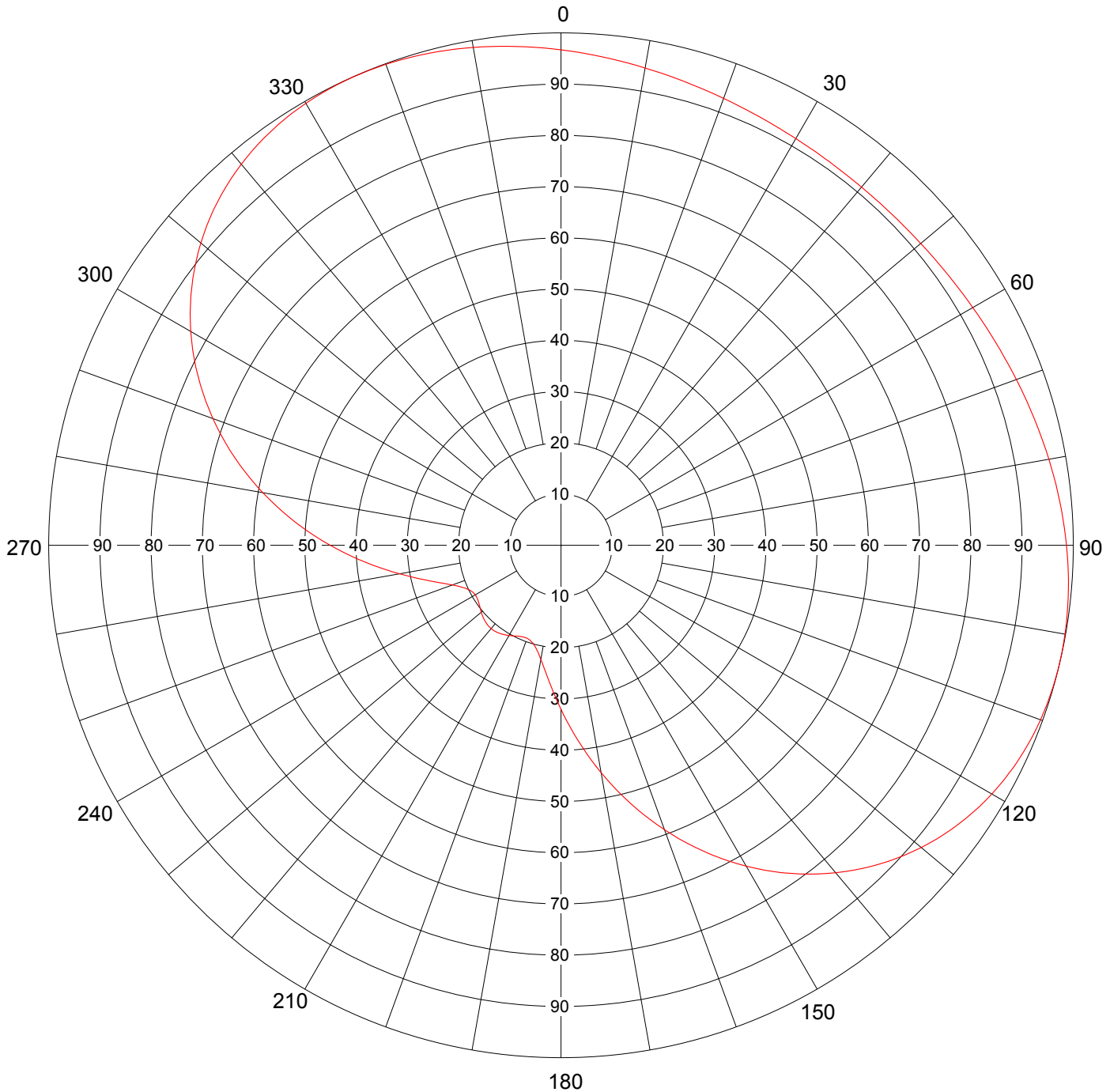
### AZIMUTH PATTERN

Gain  
Calculated / Measured

1.70 (2.30 dB)  
Calculated

Frequency  
Drawing #

201 MHz  
THV-C170



Remarks: 40 degree rotation



Date

23 Mar 2006

Call Letters

W22AC

Channel 11

Location

Hartwell &amp; Royston, GA

Customer

GPTV

Antenna Type

THV-10A11 C170

## TABULATION OF AZIMUTH PATTERN

Azimuth Pattern Drawing #

THV-C170

Angle	Field	Angle	Field	Angle	Field	Angle	Field	Angle	Field	Angle	Field	Angle	Field	Angle	Field
0	0.967	45	0.914	90	0.987	135	0.880	180	0.320	225	0.210	270	0.450	315	0.948
1	0.965	46	0.914	91	0.988	136	0.871	181	0.309	226	0.209	271	0.464	316	0.953
2	0.963	47	0.915	92	0.990	137	0.862	182	0.297	227	0.207	272	0.478	317	0.958
3	0.960	48	0.915	93	0.991	138	0.853	183	0.287	228	0.206	273	0.492	318	0.963
4	0.958	49	0.916	94	0.993	139	0.844	184	0.276	229	0.205	274	0.507	319	0.967
5	0.956	50	0.917	95	0.994	140	0.834	185	0.267	230	0.203	275	0.521	320	0.971
6	0.954	51	0.917	96	0.995	141	0.824	186	0.257	231	0.202	276	0.535	321	0.974
7	0.952	52	0.918	97	0.996	142	0.814	187	0.249	232	0.200	277	0.549	322	0.978
8	0.950	53	0.919	98	0.997	143	0.804	188	0.240	233	0.199	278	0.563	323	0.981
9	0.948	54	0.920	99	0.998	144	0.793	189	0.233	234	0.197	279	0.577	324	0.984
10	0.946	55	0.921	100	0.999	145	0.782	190	0.226	235	0.196	280	0.591	325	0.987
11	0.944	56	0.923	101	0.999	146	0.771	191	0.220	236	0.195	281	0.605	326	0.989
12	0.942	57	0.924	102	1.000	147	0.759	192	0.214	237	0.194	282	0.618	327	0.991
13	0.940	58	0.925	103	1.000	148	0.747	193	0.210	238	0.193	283	0.632	328	0.993
14	0.938	59	0.927	104	1.000	149	0.735	194	0.205	239	0.193	284	0.646	329	0.995
15	0.936	60	0.928	105	1.000	150	0.723	195	0.202	240	0.193	285	0.659	330	0.996
16	0.935	61	0.930	106	0.999	151	0.710	196	0.199	241	0.194	286	0.672	331	0.997
17	0.933	62	0.931	107	0.999	152	0.698	197	0.197	242	0.195	287	0.685	332	0.998
18	0.931	63	0.933	108	0.998	153	0.685	198	0.195	243	0.197	288	0.698	333	0.999
19	0.930	64	0.935	109	0.997	154	0.672	199	0.194	244	0.199	289	0.710	334	1.000
20	0.928	65	0.936	110	0.996	155	0.659	200	0.193	245	0.202	290	0.723	335	1.000
21	0.927	66	0.938	111	0.995	156	0.646	201	0.193	246	0.205	291	0.735	336	1.000
22	0.925	67	0.940	112	0.993	157	0.632	202	0.193	247	0.210	292	0.747	337	1.000
23	0.924	68	0.942	113	0.991	158	0.618	203	0.194	248	0.214	293	0.759	338	1.000
24	0.923	69	0.944	114	0.989	159	0.605	204	0.195	249	0.220	294	0.771	339	0.999
25	0.921	70	0.946	115	0.987	160	0.591	205	0.196	250	0.226	295	0.782	340	0.999
26	0.920	71	0.948	116	0.984	161	0.577	206	0.197	251	0.233	296	0.793	341	0.998
27	0.919	72	0.950	117	0.981	162	0.563	207	0.199	252	0.240	297	0.804	342	0.997
28	0.918	73	0.952	118	0.978	163	0.549	208	0.200	253	0.249	298	0.814	343	0.996
29	0.917	74	0.954	119	0.974	164	0.535	209	0.202	254	0.257	299	0.824	344	0.995
30	0.917	75	0.956	120	0.971	165	0.521	210	0.203	255	0.267	300	0.834	345	0.994
31	0.916	76	0.958	121	0.967	166	0.507	211	0.205	256	0.276	301	0.844	346	0.993
32	0.915	77	0.960	122	0.963	167	0.492	212	0.206	257	0.287	302	0.853	347	0.991
33	0.915	78	0.963	123	0.958	168	0.478	213	0.207	258	0.297	303	0.862	348	0.990
34	0.914	79	0.965	124	0.953	169	0.464	214	0.209	259	0.309	304	0.871	349	0.988
35	0.914	80	0.967	125	0.948	170	0.450	215	0.210	260	0.320	305	0.880	350	0.987
36	0.913	81	0.969	126	0.943	171	0.437	216	0.211	261	0.332	306	0.888	351	0.985
37	0.913	82	0.971	127	0.937	172	0.423	217	0.211	262	0.344	307	0.896	352	0.983
38	0.913	83	0.973	128	0.931	173	0.409	218	0.212	263	0.357	308	0.904	353	0.981
39	0.913	84	0.975	129	0.924	174	0.396	219	0.212	264	0.369	309	0.911	354	0.979
40	0.912	85	0.977	130	0.918	175	0.383	220	0.212	265	0.383	310	0.918	355	0.977
41	0.913	86	0.979	131	0.911	176	0.369	221	0.212	266	0.396	311	0.924	356	0.975
42	0.913	87	0.981	132	0.904	177	0.357	222	0.212	267	0.409	312	0.931	357	0.973
43	0.913	88	0.983	133	0.896	178	0.344	223	0.211	268	0.423	313	0.937	358	0.971
44	0.913	89	0.985	134	0.888	179	0.332	224	0.211	269	0.437	314	0.943	359	0.969

Remarks: 40 degree rotation



Date  
Call Letters  
Location  
Customer  
Antenna Type

23 Mar 2006  
W22AC Channel 11  
Hartwell & Royston, GA  
GPTV  
THV-10A11 C170

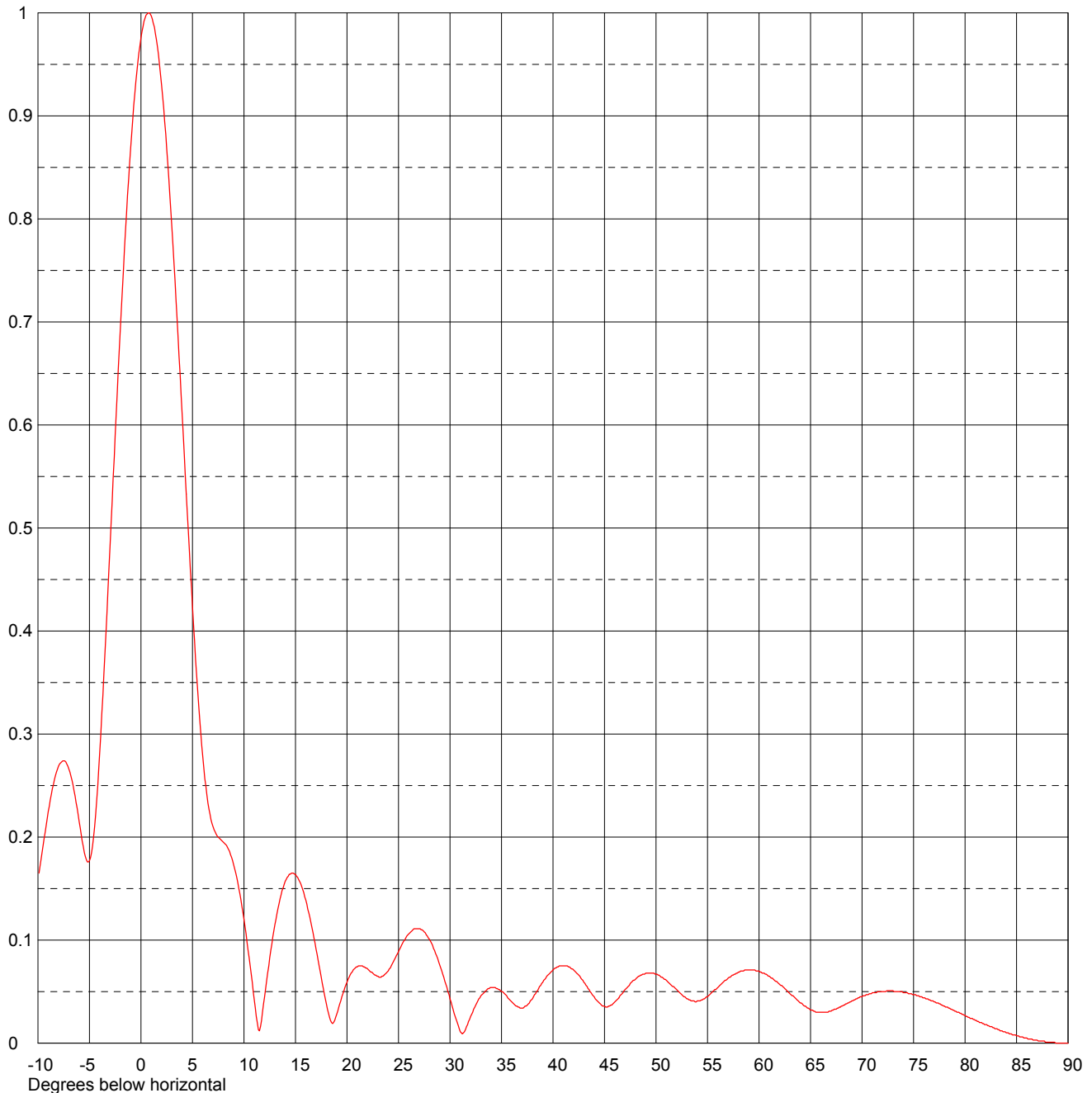
### ELEVATION PATTERN

RMS Gain at Main Lobe  
RMS Gain at Horizontal  
Calculated / Measured

**10.0 (10.00 dB)**  
**9.5 (9.78 dB)**  
**Calculated**

Beam Tilt  
Frequency  
Drawing #

**0.75 Degrees**  
**201.00 MHz**  
**10V100075-90**



Remarks:



Date

23 Mar 2006

Call Letters

W22AC

Channel 11

Location

Hartwell &amp; Royston, GA

Customer

GPTV

Antenna Type

THV-10A11 C170

## TABULATION OF ELEVATION PATTERN

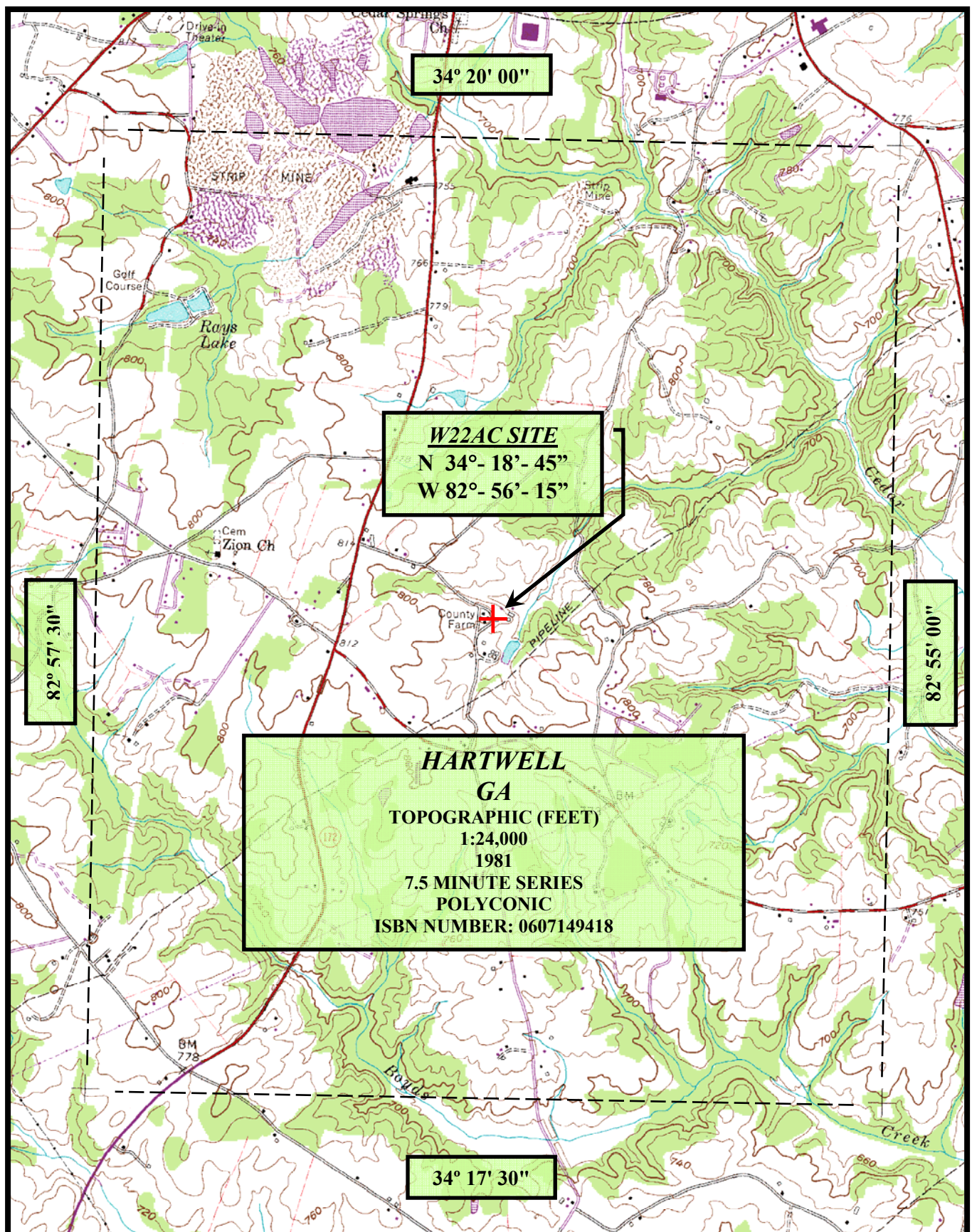
Elevation Pattern Drawing #

10V100075-90

Angle	Field	Angle	Field	Angle	Field	Angle	Field	Angle	Field	Angle	Field
-10.0	0.158	2.4	0.882	10.6	0.075	30.5	0.026	51.0	0.061	71.5	0.050
-9.5	0.192	2.6	0.854	10.8	0.059	31.0	0.011	51.5	0.056	72.0	0.050
-9.0	0.225	2.8	0.824	11.0	0.042	31.5	0.013	52.0	0.052	72.5	0.051
-8.5	0.251	3.0	0.792	11.5	0.012	32.0	0.026	52.5	0.047	73.0	0.051
-8.0	0.269	3.2	0.757	12.0	0.045	32.5	0.037	53.0	0.043	73.5	0.050
-7.5	0.274	3.4	0.722	12.5	0.083	33.0	0.046	53.5	0.041	74.0	0.049
-7.0	0.266	3.6	0.685	13.0	0.115	33.5	0.051	54.0	0.041	74.5	0.048
-6.5	0.245	3.8	0.648	13.5	0.140	34.0	0.054	54.5	0.042	75.0	0.047
-6.0	0.215	4.0	0.610	14.0	0.157	34.5	0.053	55.0	0.045	75.5	0.046
-5.5	0.185	4.2	0.571	14.5	0.164	35.0	0.050	55.5	0.050	76.0	0.044
-5.0	0.177	4.4	0.533	15.0	0.164	35.5	0.046	56.0	0.054	76.5	0.042
-4.5	0.210	4.6	0.496	15.5	0.155	36.0	0.040	56.5	0.059	77.0	0.040
-4.0	0.283	4.8	0.459	16.0	0.139	36.5	0.036	57.0	0.063	77.5	0.038
-3.5	0.378	5.0	0.424	16.5	0.117	37.0	0.034	57.5	0.066	78.0	0.036
-3.0	0.483	5.2	0.390	17.0	0.091	37.5	0.037	58.0	0.069	78.5	0.034
-2.8	0.526	5.4	0.358	17.5	0.064	38.0	0.043	58.5	0.070	79.0	0.031
-2.6	0.569	5.6	0.328	18.0	0.038	38.5	0.051	59.0	0.071	79.5	0.029
-2.4	0.612	5.8	0.301	18.5	0.020	39.0	0.059	59.5	0.071	80.0	0.027
-2.2	0.654	6.0	0.278	19.0	0.028	39.5	0.066	60.0	0.070	80.5	0.024
-2.0	0.694	6.2	0.257	19.5	0.045	40.0	0.071	60.5	0.068	81.0	0.022
-1.8	0.733	6.4	0.241	20.0	0.059	40.5	0.074	61.0	0.065	81.5	0.020
-1.6	0.771	6.6	0.227	20.5	0.069	41.0	0.075	61.5	0.061	82.0	0.018
-1.4	0.806	6.8	0.217	21.0	0.074	41.5	0.074	62.0	0.057	82.5	0.016
-1.2	0.839	7.0	0.210	21.5	0.075	42.0	0.071	62.5	0.053	83.0	0.014
-1.0	0.869	7.2	0.205	22.0	0.072	42.5	0.066	63.0	0.048	83.5	0.012
-0.8	0.897	7.4	0.201	22.5	0.068	43.0	0.059	63.5	0.044	84.0	0.010
-0.6	0.921	7.6	0.199	23.0	0.065	43.5	0.052	64.0	0.039	84.5	0.009
-0.4	0.943	7.8	0.197	23.5	0.065	44.0	0.045	64.5	0.036	85.0	0.007
-0.2	0.961	8.0	0.195	24.0	0.070	44.5	0.039	65.0	0.032	85.5	0.006
0.0	0.976	8.2	0.193	24.5	0.079	45.0	0.036	65.5	0.030	86.0	0.005
0.2	0.987	8.4	0.190	25.0	0.089	45.5	0.036	66.0	0.030	86.5	0.004
0.4	0.995	8.6	0.186	25.5	0.099	46.0	0.040	66.5	0.030	87.0	0.003
0.6	0.999	8.8	0.180	26.0	0.106	46.5	0.046	67.0	0.031	87.5	0.002
0.8	1.000	9.0	0.173	26.5	0.111	47.0	0.052	67.5	0.033	88.0	0.001
1.0	0.997	9.2	0.165	27.0	0.111	47.5	0.058	68.0	0.036	88.5	0.001
1.2	0.990	9.4	0.156	27.5	0.108	48.0	0.062	68.5	0.038	89.0	0.000
1.4	0.980	9.6	0.145	28.0	0.101	48.5	0.066	69.0	0.041	89.5	0.000
1.6	0.967	9.8	0.133	28.5	0.090	49.0	0.068	69.5	0.043	90.0	0.000
1.8	0.950	10.0	0.120	29.0	0.076	49.5	0.068	70.0	0.045		
2.0	0.930	10.2	0.106	29.5	0.060	50.0	0.067	70.5	0.047		
2.2	0.908	10.4	0.090	30.0	0.043	50.5	0.064	71.0	0.049		

Remarks:



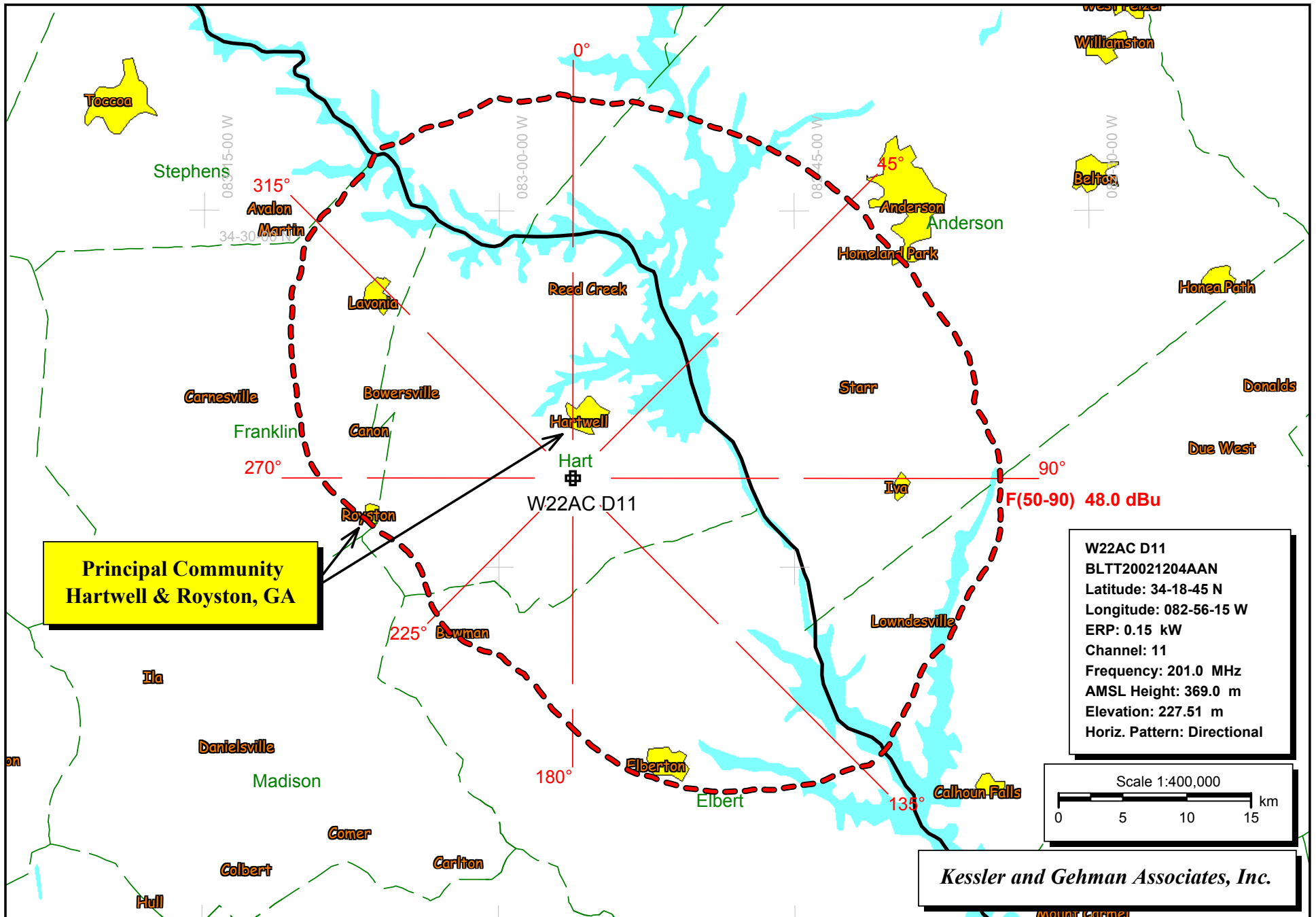


**KESSLER AND GEHMAN**  
TELECOMMUNICATIONS CONSULTING ENGINEERS  
507 N.W. 60th Street, Suite C  
Gainesville, Florida 32607

**W22AC DIGITAL CHANNEL 11**  
*Hartwell & Royston, Georgia*

20060330

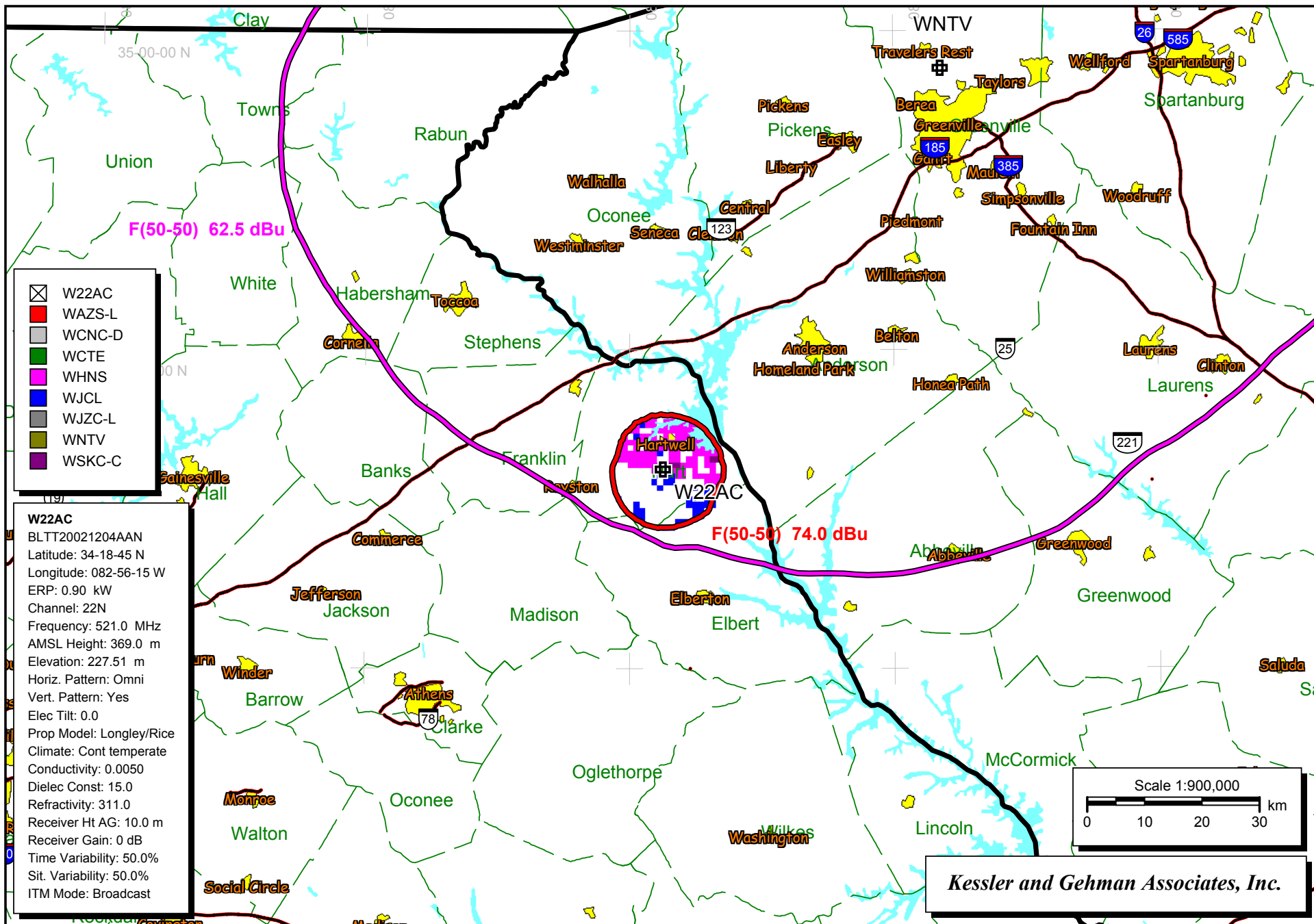
EXHIBIT 8



W27AA Digital Channel 11 Principal Community Contour







Interference From Licensed Co-Channel WJCL-TV CH 22 & Adj-channel WHNS-TV CH 21 to Licensed W22AC CH 22

EXHIBIT 11

# Longley-Rice Inbound Population Report to Licensed W22AC Channel 22 Facility

W22AC (22N) Hartwell & Royston, GA - BLTT20021204AAN  
 Lat: 34-18-45 N Lng: 082-56-15 W ERP: 0.9 kW AMSL: 369.0 m  
 TV Incoming Interference Study  
 Interference Considered Within: FCC Contour: 74 dBu  
 Signal Resolution: 1.0 km  
 LR Profile Spacing Increment: 1.0 km  
 Consider NTSC Taboo: Yes  
 # of radials computed for contours: 72  
 Contours calculated using 8 radial HAAT.  
 Using lptv/translators D/U rules.  
 Threshold for reception: 74.0  
 Pop Centroid DB: 1990 US Census

Study Date: 3-30-2006  
 TV Database Date: 03-29-06

Primary Terrain: 3 Second US Terrain

Population Database: 1990 US Census

Stations which cause interference:

Call Letters	H Units	Population	%	Area (sq. km)
WHNS (21+)	3414	7824	64.618	121.97
WJCL (22Z)	910	2224	18.368	61.53
WSKC-C (22+)	293	773	6.384	40.34

Masking Summary:

Call Letters	Total Interference		Unique Interference	
	Population	%	Population	%
WHNS (21+)	7824	64.618	6019	49.711
WJCL (22Z)	2224	18.368	701	5.790
WSKC-C (22+)	773	6.384	103	0.851

Stations considered which do not cause interference:

WAZS-L (22-)  
 WCNC-D (22)  
 WCTE (22Z)  
 WJZC-L (22+)  
 WNTV (29Z)

Call Letters	City	State	Dist	Bear
WAZS-L (22-)	North Charleston	SC	304.5	119.5
WCNC-D (22)	Charlotte	NC	198.2	54.1
WCTE (22Z)	Cookeville	TN	301.0	314.0
WHNS (21+)	Greenville	SC	99.3	13.5
WJCL (22Z)	Savannah	GA	291.1	148.7
WJZC-L (22+)	Sevierville	TN	182.7	342.3
WNTV (29Z)	Greenville	SC	84.9	34.6
WSKC-C (22+)	Atlanta	GA	142.6	259.4

Totals for W22AC (22N)

Longley-Rice Inbound Population Report to Licensed W22AC Channel 22 Facility

Calculation Area Population:	12,108	(	300.5 sq. km )
Not Affected by Terrain Loss:	12,108	(	300.5 sq. km )
Total NTSC Interference:	8,754	(	165.4 sq. km )
DTV Only Interference:	0	(	-0.0 sq. km )
Total DTV Interference:	0	(	0.0 sq. km )
Interfered Population:	8,754	(	165.4 sq. km )
Interference Free:	3,354	(	135.2 sq. km )

**Percent Interference: 72.30**

Terrain Blocked Population:	0	(	0.0 sq. km)
Contour Area Population:	12,183		

---

Interference Free Breakdown:

White:	2,345	( 69.9% )
Black:	980	( 29.2% )
Hispanic:	24	( 0.7% )
Indian:	5	( 0.1% )
Asian:	0	( 0.0% )
Other:	0	( 0.0% )
Total:	3,354	

---

1990 Census data selected  
TV INTERFERENCE and SPACING ANALYSIS PROGRAM

Date: 03-30-2006 Time: 20:34:11

Record Selected for Analysis

W22AC D1 USERRECORD-01 HARTWELL & ROYSTON GA US  
Channel 11 ERP 0.15 kW HAAT 153. m RCAMSL 00369 m SIMPLE MASK  
Latitude 034-18-45 Longitude 0082-56-15  
Status APP Zone 2 Border  
Dir Antenna Make usr Model USRPAT01 Beam tilt N Ref Azimuth 40.  
Last update Cutoff date Docket  
Comments  
Applicant

Cell Size for Service Analysis 1.0 km/side

Distance Increments for Longley-Rice Analysis 1.00 km

Not full service station

Facility meets maximum power limit

Azimuth (Deg)	ERP (kW)	HAAT (m)	48.0 dBu F(50,90) (km)
0.0	0.140	142.3	29.6
45.0	0.125	161.8	30.6
90.0	0.146	179.9	33.2
135.0	0.115	182.9	31.7
180.0	0.015	162.2	19.5
225.0	0.006	144.1	14.6
270.0	0.030	121.2	19.8
315.0	0.134	129.2	28.2

Contour Overlap to Proposed Station

Contour Overlap Evaluation to Proposed Station Complete

Proposed facility OK to FCC Monitoring Stations

Proposed facility OK toward West Virginia quite zone

Proposed facility OK toward Table Mountain

Proposed facility is beyond the Canadian coordination distance

Proposed facility is beyond the Mexican coordination distance

Proposed station is OK toward AM broadcast stations

\*\*\*\*\*

Start of Interference Analysis

Channel	Proposed Station Call	City/State	ARN
11	W22AC D1	HARTWELL & ROYSTON GA	USERRECORD01

Stations Potentially Affected by Proposed Station

Chan	Call	City/State	Dist(km)	Status	Application	Ref. No.
10	WXIA-TV	ATLANTA GA	142.5	LIC	BLCDT	-20040302AAO
10	W10AQ	YOUNG HARRIS GA	113.4	LIC	BLTTV	-4061
10	W10AL	CHEROKEE, ETC. NC	135.5	LIC	BLTTV	-3607
10	W10AP	MARION, ETC. NC	173.0	LIC	BLTTV	-19800428IN
10	W10AD	MONTREAT, ETC. NC	155.9	LIC	BLTTV	-19790820IE
10	W10AK	SPRUCE PINE NC	190.0	LIC	BLTTV	-2068
10	WIS	COLUMBIA SC	201.5	APP	BPCT	-20000501AEZ
10	WIS	COLUMBIA SC	201.5	LIC	BLCT	-20030210ABB
10	W10AJ	GREENVILLE SC	84.5	LIC	BLTTV	-3015
10	WBIR-TV	KNOXVILLE TN	209.0	LIC	BLCT	-19800109KE
11	WTZT-CA	ATHENS AL	369.5	LIC	BLTVL	-19991019AAP
11	WTZT-CA	ATHENS AL	352.3	APP	BPTVA	-20030808AAD
11	WBMA-LP	BIRMINGHAM AL	376.8	APP	BDISDTL	-20060324ABZ
11	WXIA-TV	ATLANTA GA	142.5	LIC	BMLCT	-19960208KF
11	NEW	COLUMBUS GA	264.0	APP	BNPTVL	-20000830ADF
11	NEW	COLUMBUS GA	273.2	APP	BNPTVL	-20000828BGL
11	WTOC-TV	SAVANNAH GA	291.2	LIC	BLCT	-2311
11	W11AX	BAT CAVE, ETC. NC	139.0	LIC	BLTTV	-19800501IB
11	W11AN	BRYSON CITY, ETC. NC	126.5	LIC	BLTTV	-4960
11	W11AU	CANTON, ETC. NC	140.5	LIC	BLTTV	-19830425IF
11	WTVI	CHARLOTTE NC	231.5	LIC	BMLEDT	-20030428AAT
11	WTVI-DR	CHARLOTTE NC	231.5	LIC	BPRM	-20000411AAG
11	W11AJ	FRANKLIN NC	112.0	LIC	BLTTV	-19811211IC
11	W11AQ	ROBBINSVILLE, ETC. NC	131.1	LIC	BLTTV	-19821008IB
11	WGSJ-CA	MURRELLS INLET SC	367.4	CP MOD	BMPTVA	-20050811ABF
11	WGSJ-CA	MURRELLS INLET SC	367.4	LIC	BLTVA	-20050912AAZ
11	WJHL-TV	JOHNSON CITY TN	246.5	LIC	BLCT	-2111
11	W11BD	LEBANON TN	368.7	CP	BPTVL	-20010326ACD
11	W11BD	LEBANON TN	368.7	LIC	BLTVL	-19870219IA
11	WETV-LP	MURFREESBORO TN	357.1	LIC	BLTVL	-20000203AAU
11	WETV-LP	MURFREESBORO TN	357.1	APP	BPTVA	-20030822AGE
12	WGTV	ATHENS GA	124.6	CP MOD	BMPEDT	-20020923ABE
12	WGTV-TV	ATHENS GA	124.6	LIC	BPRM	-20010226ABP
12	WRDW-TV	AUGUSTA GA	142.5	LIC	BMLCT	-557
12	WRDW-TV	AUGUSTA GA	142.3	APP	BPCT	-20050228AAC
12	W12AQ	BLACK MOUNTAIN NC	155.0	LIC	BLTTV	-1804
12	W12AU	BURNSVILLE NC	189.8	LIC	BLTTV	-1997
12	W12CI	HOT SPRINGS NC	179.8	LIC	BLTTV	-19901224JI
12	W12AR	WAYNESVILLE, ETC. NC	130.7	LIC	BLTTV	-4877
12	WFEM-LP	HEISKELL, ETC. TN	219.0	LIC	BLTVL	-19910624JI

\*\*\*\*\*

# Analysis of Interference to Affected Station 1

## DTV Baseline Analysis

Channel	Call	City/State	Application	Ref. No.
10	WXIA-DT	ATLANTA GA	DTVPLN	-DTVP0070

## Stations Potentially Affecting This Station

Chan	Call	City/State	Dist(km)	Status	Application	Ref. No.
09	WTVM	COLUMBUS GA	164.7	PLN	DTVPLN	-NPLN0588
09	WNTV-DT	GREENVILLE SC	220.0	PLN	DTVPLN	-DTVP0059
09	WTVN	CHATTANOOGA TN	180.4	PLN	DTVPLN	-NPLN0624
10	WBIQ	BIRMINGHAM AL	230.3	PLN	DTVPLN	-NPLN0636
10	WALBT	ALBANY GA	273.2	PLN	DTVPLN	-NPLN0645
10	WIS	COLUMBIA SC	332.2	PLN	DTVPLN	-NPLN0680
10	WBIRTV	KNOXVILLE TN	252.5	PLN	DTVPLN	-NPLN0682
10	WSMV-DT	NASHVILLE TN	351.4	PLN	DTVPLN	-DTVP0077
11	WXIATV	ATLANTA GA	0.0	PLN	DTVPLN	-NPLN0706

Results for: 10A GA ATLANTA DTVPLN DTVP0070 PLN  
 HAAT 320.0 m, ATV ERP 15.7 kW

	POPULATION	AREA (sq km)
within Noise Limited Contour	3467399	30038.0
not affected by terrain losses	3385906	27972.6
lost to NTSC IX	47425	1385.8
lost to additional IX by ATV	13	1.0
lost to ATV IX only	2862	78.1
lost to all IX	47438	1386.8

## NTSC Baseline Analysis

Channel	Call	City/State	Application	Ref. No.
11	WXIATV	ATLANTA GA	DTVPLN	-NPLN0706

## Stations Potentially Affecting This Station

Chan	Call	City/State	Dist(km)	Status	Application	Ref. No.
10	WXIA-DT	ATLANTA GA	0.0	PLN	DTVPLN	-DTVP0070
11	WFSUTV	TALLAHASSEE FL	378.7	PLN	DTVPLN	-NPLN0705
11	WTCTV	SAVANNAH GA	336.5	PLN	DTVPLN	-NPLN0707
11	WJHLTV	JOHNSON CITY TN	358.1	PLN	DTVPLN	-NPLN0741
12	WDEFTV	CHATTANOOGA TN	178.1	PLN	DTVPLN	-NPLN0795

Results for: 11N GA ATLANTA DTVPLN NPLN0706 PLN

	POPULATION	AREA (sq km)
within Noise Limited Contour	3465897	30015.2
not affected by terrain losses	3354720	27087.3
lost to NTSC IX	24837	1138.5
lost to additional IX by ATV	0	0.0
lost to all IX	24837	1138.5

## Analysis of current record

Channel	Call	City/State	Application	Ref. No.
10	WXIA-TV	ATLANTA GA	BLCDD	-20040302AAO

## Stations Potentially Affecting This Station

Chan	Call	City/State	Dist(km)	Status	Application	Ref. No.
09	WJSU-TV	ANNISTON AL	193.6	LIC	BPRM	-20030127AEY
09	WJSU-TV	ANNISTON AL	193.6	CP MOD	BMPCDT	-20040609ABL
09	WTVM	COLUMBUS GA	164.7	LIC	BLCT	-1079
09	WTVM	COLUMBUS GA	164.7	APP	BFRCT	-20050815ACC
09	WNTV	GREENVILLE SC	220.1	LIC	BLEDT	-20041123AKQ
09	WNTV-DT	GREENVILLE SC	220.0	PLN	DTVPLN	-DTVP0059
09	WTVG	CHATTANOOGA TN	180.3	LIC	BLCT	-20021031ABE
10	WBIQ	BIRMINGHAM AL	231.1	APP	BFRCT	-20050815ACO
10	WBIQ	BIRMINGHAM AL	231.1	LIC	BLET	-20040412ACV
10	WALB	ALBANY GA	273.2	LIC	BLCT	-2413
10	WIS	COLUMBIA SC	332.2	APP	BPCT	-20000501AEZ
10	WIS	COLUMBIA SC	332.2	LIC	BLCT	-20030210ABB
10	WBIR-TV	KNOXVILLE TN	252.5	LIC	BLCT	-19800109KE
10	WSMV-DT	NASHVILLE TN	351.4	PLN	DTVPLN	-DTVP0077
11	WXIA-TV	ATLANTA GA	0.0	LIC	BMLCT	-19960208KF
11	W22AC D1	HARTWELL & ROYSTON GA	142.5	APP	USERRECORD-01	

Total scenarios = 5

Result key: 1  
Scenario 1 Affected station 1  
Before Analysis

Results for: 10A GA ATLANTA BLCDT 20040302AAO LIC  
HAAT 303.0 m, ATV ERP 80.0 kW

	POPULATION	AREA (sq km)
within Noise Limited Contour	3671007	38414.0
not affected by terrain losses	3595913	35391.2
lost to NTSC IX	79239	2133.6
lost to additional IX by ATV	0	5.9
lost to ATV IX only	5734	112.8
lost to all IX	79239	2139.6

Potential Interfering Stations Included in above Scenario 1

9N GA COLUMBUS	BLCT	1079	LIC
10N AL BIRMINGHAM	BLET	20040412ACV	LIC
10N GA ALBANY	BLCT	2413	LIC
10N SC COLUMBIA	BLCT	20030210ABB	LIC
10N TN KNOXVILLE	BLCT	19800109KE	LIC
10A TN NASHVILLE	DTVPLN	DTVP0077	PLN

After Analysis

Results for: 10A GA ATLANTA BLCDT 20040302AAO LIC  
HAAT 303.0 m, ATV ERP 80.0 kW

	POPULATION	AREA (sq km)
within Noise Limited Contour	3671007	38414.0
not affected by terrain losses	3595913	35391.2
lost to NTSC IX	79239	2133.6
lost to additional IX by ATV	0	5.9
lost to ATV IX only	5734	112.8
lost to all IX	79239	2139.6

Potential Interfering Stations Included in above Scenario 1

9N GA COLUMBUS	BLCT	1079	LIC	
10N AL BIRMINGHAM	BLET	20040412ACV	LIC	
10N GA ALBANY	BLCT	2413	LIC	
10N SC COLUMBIA	BLCT	20030210ABB	LIC	
10N TN KNOXVILLE	BLCT	19800109KE	LIC	
10A TN NASHVILLE	DTVPLN	DTVP0077	PLN	
11A GA HARTWELL & ROYSTON	USERRECORD01		APP	
*Percent Service lost without proposal:		-5.3	to BLCDT	20040302AAO
*Percent Service lost with proposal:		-5.3	to BLCDT	20040302AAO

Result key: 2  
 Scenario 2 Affected station 1  
 Before Analysis

Results for: 10A GA ATLANTA BLCDT 20040302AAO LIC  
 HAAT 303.0 m, ATV ERP 80.0 kW

	POPULATION	AREA (sq km)
within Noise Limited Contour	3671007	38414.0
not affected by terrain losses	3595913	35391.2
lost to NTSC IX	79239	2133.6
lost to additional IX by ATV	0	5.9
lost to ATV IX only	9508	305.7
lost to all IX	79239	2139.6

Potential Interfering Stations Included in above Scenario 2

9N GA COLUMBUS	BLCT	1079	LIC
10N AL BIRMINGHAM	BLET	20040412ACV	LIC
10N GA ALBANY	BLCT	2413	LIC
10N SC COLUMBIA	BPCT	20000501AEZ	APP
10N TN KNOXVILLE	BLCT	19800109KE	LIC
10A AL BIRMINGHAM	BFR CET	20050815ACO	APP
10A TN NASHVILLE	DTVPLN	DTVP0077	PLN

After Analysis

Results for: 10A GA ATLANTA BLCDT 20040302AAO LIC  
 HAAT 303.0 m, ATV ERP 80.0 kW

	POPULATION	AREA (sq km)
within Noise Limited Contour	3671007	38414.0
not affected by terrain losses	3595913	35391.2
lost to NTSC IX	79239	2133.6
lost to additional IX by ATV	0	5.9
lost to ATV IX only	9508	305.7
lost to all IX	79239	2139.6

Potential Interfering Stations Included in above Scenario 2

9N GA COLUMBUS	BLCT	1079	LIC
10N AL BIRMINGHAM	BLET	20040412ACV	LIC
10N GA ALBANY	BLCT	2413	LIC
10N SC COLUMBIA	BPCT	20000501AEZ	APP
10N TN KNOXVILLE	BLCT	19800109KE	LIC
10A AL BIRMINGHAM	BFR CET	20050815ACO	APP



10A TN NASHVILLE DTVPLN DTVP0077 PLN  
 11A GA HARTWELL & ROYSTON USERRECORD01 APP  
 \*Percent Service lost without proposal: -5.3 to BLCDT 20040302AAO  
 \*Percent Service lost with proposal: -5.3 to BLCDT 20040302AAO

Result key: 3  
 Scenario 3 Affected station 1  
 Before Analysis

Results for: 10A GA ATLANTA BLCDT 20040302AAO LIC  
 HAAT 303.0 m, ATV ERP 80.0 kW

	POPULATION	AREA (sq km)
within Noise Limited Contour	3671007	38414.0
not affected by terrain losses	3595913	35391.2
lost to NTSC IX	79239	2133.6
lost to additional IX by ATV	0	5.9
lost to ATV IX only	5734	112.8
lost to all IX	79239	2139.6

Potential Interfering Stations Included in above Scenario 3

9N GA COLUMBUS	BLCT	1079	LIC
10N AL BIRMINGHAM	BLET	20040412ACV	LIC
10N GA ALBANY	BLCT	2413	LIC
10N SC COLUMBIA	BPCT	20000501AEZ	APP
10N TN KNOXVILLE	BLCT	19800109KE	LIC
10A TN NASHVILLE	DTVPLN	DTVP0077	PLN

After Analysis

Results for: 10A GA ATLANTA BLCDT 20040302AAO LIC  
 HAAT 303.0 m, ATV ERP 80.0 kW

	POPULATION	AREA (sq km)
within Noise Limited Contour	3671007	38414.0
not affected by terrain losses	3595913	35391.2
lost to NTSC IX	79239	2133.6
lost to additional IX by ATV	0	5.9
lost to ATV IX only	5734	112.8
lost to all IX	79239	2139.6

Potential Interfering Stations Included in above Scenario 3

9N GA COLUMBUS	BLCT	1079	LIC
10N AL BIRMINGHAM	BLET	20040412ACV	LIC
10N GA ALBANY	BLCT	2413	LIC
10N SC COLUMBIA	BPCT	20000501AEZ	APP
10N TN KNOXVILLE	BLCT	19800109KE	LIC
10A TN NASHVILLE	DTVPLN	DTVP0077	PLN
11A GA HARTWELL & ROYSTON	USERRECORD01		APP
*Percent Service lost without proposal:	-5.3	to BLCDT	20040302AAO
*Percent Service lost with proposal:	-5.3	to BLCDT	20040302AAO

Result key: 4  
 Scenario 4 Affected station 1  
 Before Analysis

Results for: 10A GA ATLANTA BLCDDT 20040302AAO LIC  
 HAAT 303.0 m, ATV ERP 80.0 kW

	POPULATION	AREA (sq km)
within Noise Limited Contour	3671007	38414.0
not affected by terrain losses	3595913	35391.2
lost to NTSC IX	79239	2133.6
lost to additional IX by ATV	0	5.9
lost to ATV IX only	9508	305.7
lost to all IX	79239	2139.6

Potential Interfering Stations Included in above Scenario 4

9N GA COLUMBUS	BLCT	1079	LIC
10N AL BIRMINGHAM	BLET	20040412ACV	LIC
10N GA ALBANY	BLCT	2413	LIC
10N SC COLUMBIA	BLCT	20030210ABB	LIC
10N TN KNOXVILLE	BLCT	19800109KE	LIC
10A AL BIRMINGHAM	BFRCDT	20050815ACO	APP
10A TN NASHVILLE	DTVPLN	DTVP0077	PLN

After Analysis

Results for: 10A GA ATLANTA BLCDDT 20040302AAO LIC  
 HAAT 303.0 m, ATV ERP 80.0 kW

	POPULATION	AREA (sq km)
within Noise Limited Contour	3671007	38414.0
not affected by terrain losses	3595913	35391.2
lost to NTSC IX	79239	2133.6
lost to additional IX by ATV	0	5.9
lost to ATV IX only	9508	305.7
lost to all IX	79239	2139.6

Potential Interfering Stations Included in above Scenario 4

9N GA COLUMBUS	BLCT	1079	LIC
10N AL BIRMINGHAM	BLET	20040412ACV	LIC
10N GA ALBANY	BLCT	2413	LIC
10N SC COLUMBIA	BLCT	20030210ABB	LIC
10N TN KNOXVILLE	BLCT	19800109KE	LIC
10A AL BIRMINGHAM	BFRCDT	20050815ACO	APP
10A TN NASHVILLE	DTVPLN	DTVP0077	PLN
11A GA HARTWELL & ROYSTON	USERRECORD01		APP
*Percent Service lost without proposal:	-5.3	to BLCDDT	20040302AAO
*Percent Service lost with proposal:	-5.3	to BLCDDT	20040302AAO

Result key: 5  
 Scenario 5 Affected station 1  
 Before Analysis

Results for: 10A GA ATLANTA BLCDDT 20040302AAO LIC  
 HAAT 303.0 m, ATV ERP 80.0 kW

	POPULATION	AREA (sq km)
within Noise Limited Contour	3671007	38414.0
not affected by terrain losses	3595913	35391.2
lost to NTSC IX	79239	2133.6

lost to additional IX by ATV	0	5.9
lost to ATV IX only	5734	112.8
lost to all IX	79239	2139.6

Potential Interfering Stations Included in above Scenario 5

9N GA COLUMBUS	BLCT	1079	LIC
10N AL BIRMINGHAM	BLET	20040412ACV	LIC
10N GA ALBANY	BLCT	2413	LIC
10N SC COLUMBIA	BLCT	20030210ABB	LIC
10N TN KNOXVILLE	BLCT	19800109KE	LIC
10A TN NASHVILLE	DTVPLN	DTVP0077	PLN

After Analysis

Results for: 10A GA ATLANTA BLCDDT 20040302AAO LIC  
HAAT 303.0 m, ATV ERP 80.0 kW

	POPULATION	AREA (sq km)
within Noise Limited Contour	3671007	38414.0
not affected by terrain losses	3595913	35391.2
lost to NTSC IX	79239	2133.6
lost to additional IX by ATV	0	5.9
lost to ATV IX only	5734	112.8
lost to all IX	79239	2139.6

Potential Interfering Stations Included in above Scenario 5

9N GA COLUMBUS	BLCT	1079	LIC
10N AL BIRMINGHAM	BLET	20040412ACV	LIC
10N GA ALBANY	BLCT	2413	LIC
10N SC COLUMBIA	BLCT	20030210ABB	LIC
10N TN KNOXVILLE	BLCT	19800109KE	LIC
10A TN NASHVILLE	DTVPLN	DTVP0077	PLN
11A GA HARTWELL & ROYSTON	USERRECORD01		APP
*Percent Service lost without proposal:	-5.3	to BLCDDT	20040302AAO
*Percent Service lost with proposal:	-5.3	to BLCDDT	20040302AAO

#####

Analysis of Interference to Affected Station 2

Analysis of current record

Channel	Call	City/State	Application	Ref. No.
10	W10AQ	YOUNG HARRIS GA	BLTTV	-4061

Stations Potentially Affecting This Station

Chan	Call	City/State	Dist(km)	Status	Application	Ref. No.
09	W09AG	FRANKLIN NC	40.2	LIC	BLTTV	-19801112IF
09	WTVC	CHATTANOOGA TN	129.9	LIC	BLCT	-20021031ABE
10	WBIQ	BIRMINGHAM AL	310.9	APP	BFRCT	-20050815ACO
10	WBIQ	BIRMINGHAM AL	310.9	LIC	BLET	-20040412ACV
10	WXIA-TV	ATLANTA GA	136.7	LIC	BLCDDT	-20040302AAO
10	WXIA-DT	ATLANTA GA	136.7	PLN	DTVPLN	-DTVP0070

10	W10AL	CHEROKEE, ETC. NC	80.8	LIC	BLTTV	-3607
10	W10AD	MONTREAT, ETC. NC	161.9	LIC	BLTTV	-19790820IE
10	WIS	COLUMBIA SC	303.2	APP	BPCT	-20000501AEZ
10	WIS	COLUMBIA SC	303.2	LIC	BLCT	-20030210ABB
10	W10AJ	GREENVILLE SC	136.6	LIC	BLTTV	-3015
10	WBIR-TV	KNOXVILLE TN	118.6	LIC	BLCT	-19800109KE
10	WSMV-DT	NASHVILLE TN	298.3	PLN	DTVPLN	-DTVP0077
11	W11AQ	ROBBINSVILLE, ETC. NC	37.1	LIC	BLTTV	-19821008IB
11	W22AC D1	HARTWELL & ROYSTON GA	113.4	APP	USERRECORD-01	

Proposal causes no interference

#####

#### Analysis of Interference to Affected Station 3

##### Analysis of current record

Channel	Call	City/State	Application	Ref. No.
10	W10AL	CHEROKEE, ETC. NC	BLTTV	-3607

##### Stations Potentially Affecting This Station

Chan	Call	City/State	Dist(km)	Status	Application	Ref. No.
09	W09AG	FRANKLIN NC	41.6	LIC	BLTTV	-19801112IF
09	W09AF	SYLVA, ETC. NC	16.8	LIC	BLTTV	-19781113IO
09	W09AD	WAYNESVILLE NC	26.9	LIC	BLTTV	-3897
09	WNTV	GREENVILLE SC	103.5	LIC	BLEDT	-20041123AKQ
09	WNTV-DT	GREENVILLE SC	103.6	PLN	DTVPLN	-DTVP0059
10	WBIQ	BIRMINGHAM AL	388.3	APP	BFCET	-20050815ACO
10	WBIQ	BIRMINGHAM AL	388.3	LIC	BLET	-20040412ACV
10	WXIA-TV	ATLANTA GA	212.9	LIC	BLCDDT	-20040302AAO
10	WXIA-DT	ATLANTA GA	212.9	PLN	DTVPLN	-DTVP0070
10	W10AQ	YOUNG HARRIS GA	80.8	LIC	BLTTV	-4061
10	W10AP	MARION, ETC. NC	121.7	LIC	BLTTV	-19800428IN
10	W10AD	MONTREAT, ETC. NC	90.7	LIC	BLTTV	-19790820IE
10	W10AK	SPRUCE PINE NC	119.3	LIC	BLTTV	-2068
10	WIS	COLUMBIA SC	279.8	APP	BPCT	-20000501AEZ
10	WIS	COLUMBIA SC	279.8	LIC	BLCT	-20030210ABB
10	W10AJ	GREENVILLE SC	102.9	LIC	BLTTV	-3015
10	WBIR-TV	KNOXVILLE TN	79.4	LIC	BLCT	-19800109KE
10	WSMV-DT	NASHVILLE TN	326.5	PLN	DTVPLN	-DTVP0077
10	WSLS-TV	ROANOKE VA	342.9	LIC	BLCT	-19990813LD
11	W11AN	BRYSON CITY, ETC. NC	13.9	LIC	BLTTV	-4960
11	W22AC D1	HARTWELL & ROYSTON GA	135.5	APP	USERRECORD-01	

Proposed station is beyond the site to  
nearest cell evaluation distance

#####

#### Analysis of Interference to Affected Station 4

##### Analysis of current record

Channel	Call	City/State	Application	Ref. No.
---------	------	------------	-------------	----------

10 W10AP MARION, ETC. NC BLTTV -19800428IN

Stations Potentially Affecting This Station

Chan	Call	City/State	Dist(km)	Status	Application	Ref. No.
09	WSOC-TV	CHARLOTTE NC	124.4	LIC	BLCT	-20000726AAR
09	WNTV	GREENVILLE SC	88.8	LIC	BLEDT	-20041123AKQ
09	WNTV-DT	GREENVILLE SC	88.9	PLN	DTVPLN	-DTVP0059
10	WXIA-TV	ATLANTA GA	300.5	LIC	BLCDDT	-20040302AAO
10	WXIA-DT	ATLANTA GA	300.5	PLN	DTVPLN	-DTVP0070
10	W10AL	CHEROKEE, ETC. NC	121.7	LIC	BLTTV	-3607
10	W10AD	MONTREAT, ETC. NC	31.0	LIC	BLTTV	-19790820IE
10	W10AK	SPRUCE PINE NC	25.0	LIC	BLTTV	-2068
10	WIS	COLUMBIA SC	206.1	APP	BPCT	-20000501AEZ
10	WIS	COLUMBIA SC	206.1	LIC	BLCT	-20030210ABB
10	W10AJ	GREENVILLE SC	89.1	LIC	BLTTV	-3015
10	WBIR-TV	KNOXVILLE TN	178.1	LIC	BLCT	-19800109KE
10	WSLS-TV	ROANOKE VA	237.9	LIC	BLCT	-19990813LD
11	WTVI	CHARLOTTE NC	126.0	LIC	BMLEDT	-20030428AAT
11	WTVI-DR	CHARLOTTE NC	126.0	LIC	BPRM	-20000411AAG
11	WJHL-TV	JOHNSON CITY TN	85.6	LIC	BLCT	-2111
11	W22AC D1	HARTWELL & ROYSTON GA	173.0	APP	USERRECORD-01	

Proposed station is beyond the site to  
nearest cell evaluation distance

#####

Analysis of Interference to Affected Station 5

Analysis of current record

Channel	Call	City/State	Application	Ref. No.
10	W10AD	MONTREAT, ETC. NC	BLTTV	-19790820IE

Stations Potentially Affecting This Station

Chan	Call	City/State	Dist(km)	Status	Application	Ref. No.
09	W09AR	WEAVERVILLE NC	20.9	LIC	BLTTV	-19790607IA
09	WNTV	GREENVILLE SC	76.6	LIC	BLEDT	-20041123AKQ
09	WNTV-DT	GREENVILLE SC	76.7	PLN	DTVPLN	-DTVP0059
10	WXIA-TV	ATLANTA GA	276.1	LIC	BLCDDT	-20040302AAO
10	WXIA-DT	ATLANTA GA	276.1	PLN	DTVPLN	-DTVP0070
10	W10AQ	YOUNG HARRIS GA	161.9	LIC	BLTTV	-4061
10	W10AL	CHEROKEE, ETC. NC	90.7	LIC	BLTTV	-3607
10	W10AP	MARION, ETC. NC	31.0	LIC	BLTTV	-19800428IN
10	W10AK	SPRUCE PINE NC	35.5	LIC	BLTTV	-2068
10	WIS	COLUMBIA SC	221.3	APP	BPCT	-20000501AEZ
10	WIS	COLUMBIA SC	221.3	LIC	BLCT	-20030210ABB
10	W10AJ	GREENVILLE SC	76.7	LIC	BLTTV	-3015
10	WBIR-TV	KNOXVILLE TN	149.6	LIC	BLCT	-19800109KE
10	WSLS-TV	ROANOKE VA	263.0	LIC	BLCT	-19990813LD
11	W11AX	BAT CAVE, ETC. NC	23.5	LIC	BLTTV	-19800501IB
11	WJHL-TV	JOHNSON CITY TN	91.2	LIC	BLCT	-2111
11	W22AC D1	HARTWELL & ROYSTON GA	155.9	APP	USERRECORD-01	

Proposed station is beyond the site to  
nearest cell evaluation distance

#####

#### Analysis of Interference to Affected Station 6

##### Analysis of current record

Channel	Call	City/State	Application	Ref. No.
10	W10AK	SPRUCE PINE NC	BLTTV	-2068

##### Stations Potentially Affecting This Station

Chan	Call	City/State	Dist(km)	Status	Application	Ref. No.
09	WNTV	GREENVILLE SC	108.0	LIC	BLEDT	-20041123AKQ
09	WNTV-DT	GREENVILLE SC	108.1	PLN	DTVPLN	-DTVP0059
09	WOPI-CA	KINGSPORT TN	61.4	CP	BPTVA	-20030910ACT
09	WOPI-CA	KINGSPORT TN	61.4	APP	BMPTVA	-20050314AKH
09	WOPI-CA	BRISTOL VA	61.4	LIC	BLTVA	-20021211AAB
10	WXIA-TV	ATLANTA GA	311.5	LIC	BLCDDT	-20040302AAO
10	WXIA-DT	ATLANTA GA	311.5	PLN	DTVPLN	-DTVP0070
10	W10AL	CHEROKEE, ETC. NC	119.3	LIC	BLTTV	-3607
10	W10AP	MARION, ETC. NC	25.0	LIC	BLTTV	-19800428IN
10	W10AD	MONTREAT, ETC. NC	35.5	LIC	BLTTV	-19790820IE
10	WIS	COLUMBIA SC	230.5	APP	BPCT	-20000501AEZ
10	WIS	COLUMBIA SC	230.5	LIC	BLCT	-20030210ABB
10	W10AJ	GREENVILLE SC	108.1	LIC	BLTTV	-3015
10	WBIR-TV	KNOXVILLE TN	165.8	LIC	BLCT	-19800109KE
10	WSLS-TV	ROANOKE VA	228.1	LIC	BLCT	-19990813LD
11	WJHL-TV	JOHNSON CITY TN	61.4	LIC	BLCT	-2111
11	W22AC D1	HARTWELL & ROYSTON GA	190.0	APP	USERRECORD-01	

Proposed station is beyond the site to  
nearest cell evaluation distance

#####

#### Analysis of Interference to Affected Station 7

##### NTSC Baseline Analysis

Channel	Call	City/State	Application	Ref. No.
10	WIS	COLUMBIA SC	DTVPLN	-NPLN0680

##### Stations Potentially Affecting This Station

Chan	Call	City/State	Dist(km)	Status	Application	Ref. No.
09	WSOCTV	CHARLOTTE NC	126.4	PLN	DTVPLN	-NPLN0608
09	WNTV-DT	GREENVILLE SC	176.5	PLN	DTVPLN	-DTVP0059
10	WXIA-DT	ATLANTA GA	332.2	PLN	DTVPLN	-DTVP0070
10	WNCT-DT	GREENVILLE NC	336.7	PLN	DTVPLN	-DTVP0073
10	WBIRTV	KNOXVILLE TN	357.1	PLN	DTVPLN	-NPLN0682
10	WSLSTV	ROANOKE VA	346.3	PLN	DTVPLN	-NPLN0689

Results for: 10N SC COLUMBIA                      DTVPLN      NPLN0680              PLN

	POPULATION	AREA (sq km)
within Noise Limited Contour	1499413	38285.6
not affected by terrain losses	1446386	37015.1
lost to NTSC IX	222460	3594.7
lost to additional IX by ATV	4938	300.4
lost to all IX	227398	3895.0

Analysis of current record

Channel	Call	City/State	Application	Ref. No.
10	WIS	COLUMBIA SC	BPCT	-20000501AEZ

Stations Potentially Affecting This Station

Chan	Call	City/State	Dist(km)	Status	Application	Ref. No.
09	WSOC-TV	CHARLOTTE NC	126.4	LIC	BLCT	-20000726AAR
09	WHMC-TV	CONWAY SC	153.0	LIC	BPRM	-20030318AIM
09	WHMC	CONWAY SC	153.0	LIC	BLEDT	-20050830ACK
09	WNTV	GREENVILLE SC	176.6	LIC	BLEDT	-20041123AKQ
09	WNTV-DT	GREENVILLE SC	176.5	PLN	DTVPLN	-DTVP0059
10	WXIA-TV	ATLANTA GA	332.2	LIC	BLCDDT	-20040302AAO
10	WXIA-DT	ATLANTA GA	332.2	PLN	DTVPLN	-DTVP0070
10	WNCT-TV	GREENVILLE NC	336.6	CP MOD	BMPCDDT	-20040730ARH
10	WNCT-DT	GREENVILLE NC	336.6	PLN	DTVPLN	-DTVP0073
10	WBIR-TV	KNOXVILLE TN	357.1	LIC	BLCT	-19800109KE
10	WSLS-TV	ROANOKE VA	346.3	LIC	BLCT	-19990813LD
11	WTVI	CHARLOTTE NC	129.3	LIC	BMLEDT	-20030428AAT
11	WTVI-DR	CHARLOTTE NC	129.3	LIC	BPRM	-20000411AAG
11	W22AC D1	HARTWELL & ROYSTON GA	201.5	APP	USERRECORD-01	

Proposal causes no interference

#####

Analysis of Interference to Affected Station      8

Analysis of current record

Channel	Call	City/State	Application	Ref. No.
10	WIS	COLUMBIA SC	BLCT	-20030210ABB

Stations Potentially Affecting This Station

Chan	Call	City/State	Dist(km)	Status	Application	Ref. No.
09	WSOC-TV	CHARLOTTE NC	126.4	LIC	BLCT	-20000726AAR
09	WHMC-TV	CONWAY SC	153.0	LIC	BPRM	-20030318AIM
09	WHMC	CONWAY SC	153.0	LIC	BLEDT	-20050830ACK
09	WNTV	GREENVILLE SC	176.6	LIC	BLEDT	-20041123AKQ
09	WNTV-DT	GREENVILLE SC	176.5	PLN	DTVPLN	-DTVP0059
10	WXIA-TV	ATLANTA GA	332.2	LIC	BLCDDT	-20040302AAO
10	WXIA-DT	ATLANTA GA	332.2	PLN	DTVPLN	-DTVP0070
10	WNCT-TV	GREENVILLE NC	336.6	CP MOD	BMPCDDT	-20040730ARH
10	WNCT-DT	GREENVILLE NC	336.6	PLN	DTVPLN	-DTVP0073
10	WBIR-TV	KNOXVILLE TN	357.1	LIC	BLCT	-19800109KE
10	WSLS-TV	ROANOKE VA	346.3	LIC	BLCT	-19990813LD
11	WTVI	CHARLOTTE NC	129.3	LIC	BMLEDT	-20030428AAT
11	WTVI-DR	CHARLOTTE NC	129.3	LIC	BPRM	-20000411AAG

11 W22AC D1 HARTWELL & ROYSTON GA 201.5 APP USERRECORD-01  
 Proposal causes no interference

#####

# Analysis of Interference to Affected Station 9

## Analysis of current record

Channel	Call	City/State	Application	Ref. No.
10	W10AJ	GREENVILLE SC	BLTTV	-3015

## Stations Potentially Affecting This Station

Chan	Call	City/State	Dist(km)	Status	Application	Ref. No.
09	WNTV	GREENVILLE SC	0.7	LIC	BLEDT	-20041123AKQ
09	WNTV-DT	GREENVILLE SC	0.7	PLN	DTVPLN	-DTVP0059
10	WXIA-TV	ATLANTA GA	219.5	LIC	BLCDD	-20040302AAO
10	WXIA-DT	ATLANTA GA	219.5	PLN	DTVPLN	-DTVP0070
10	W10AQ	YOUNG HARRIS GA	136.6	LIC	BLTTV	-4061
10	W10AL	CHEROKEE, ETC. NC	102.9	LIC	BLTTV	-3607
10	W10AP	MARION, ETC. NC	89.1	LIC	BLTTV	-19800428IN
10	W10AD	MONTREAT, ETC. NC	76.7	LIC	BLTTV	-19790820IE
10	W10AK	SPRUCE PINE NC	108.1	LIC	BLTTV	-2068
10	WIS	COLUMBIA SC	177.2	APP	BPCT	-20000501AEZ
10	WIS	COLUMBIA SC	177.2	LIC	BLCT	-20030210ABB
10	WBIR-TV	KNOXVILLE TN	181.5	LIC	BLCT	-19800109KE
10	WSLS-TV	ROANOKE VA	323.4	LIC	BLCT	-19990813LD
11	W22AC D1	HARTWELL & ROYSTON GA	84.5	APP	USERRECORD-01	

Proposal causes no interference

#####

# Analysis of Interference to Affected Station 10

## NTSC Baseline Analysis

Channel	Call	City/State	Application	Ref. No.
10	WBIRTV	KNOXVILLE TN	DTVPLN	-NPLN0682

## Stations Potentially Affecting This Station

Chan	Call	City/State	Dist(km)	Status	Application	Ref. No.
09	WNTV-DT	GREENVILLE SC	182.1	PLN	DTVPLN	-DTVP0059
09	WTVG	CHATTANOOGA TN	155.9	PLN	DTVPLN	-NPLN0624
10	WBIQ	BIRMINGHAM AL	382.7	PLN	DTVPLN	-NPLN0636
10	WXIA-DT	ATLANTA GA	252.5	PLN	DTVPLN	-DTVP0070
10	WCPO-DT	CINCINNATI OH	350.3	PLN	DTVPLN	-DTVP0075
10	WIS	COLUMBIA SC	357.1	PLN	DTVPLN	-NPLN0680
10	WSMV-DT	NASHVILLE TN	263.3	PLN	DTVPLN	-DTVP0077
10	WSLSTV	ROANOKE VA	363.4	PLN	DTVPLN	-NPLN0689
11	WJHLTV	JOHNSON CITY TN	168.4	PLN	DTVPLN	-NPLN0741

Results for: 10N TN KNOXVILLE	DTVPLN	NPLN0682	PLN
POPULATION	AREA (sq km)		



within Noise Limited Contour	1415797	42098.8
not affected by terrain losses	1177030	31593.6
lost to NTSC IX	54821	1720.1
lost to additional IX by ATV	26928	1279.7
lost to all IX	81749	2999.8

Analysis of current record

Channel	Call	City/State	Application	Ref. No.
10	WBIR-TV	KNOXVILLE TN	BLCT	-19800109KE

Stations Potentially Affecting This Station

Chan	Call	City/State	Dist(km)	Status	Application	Ref. No.
09	WNTV	GREENVILLE SC	182.0	LIC	BLEDT	-20041123AKQ
09	WNTV-DT	GREENVILLE SC	182.1	PLN	DTVPLN	-DTVP0059
09	WTVC	CHATTANOOGA TN	156.0	LIC	BLCT	-20021031ABE
10	WBIQ	BIRMINGHAM AL	383.5	APP	BFCRCET	-20050815ACO
10	WBIQ	BIRMINGHAM AL	383.5	LIC	BLET	-20040412ACV
10	WXIA-TV	ATLANTA GA	252.5	LIC	BLCDDT	-20040302AAO
10	WXIA-DT	ATLANTA GA	252.5	PLN	DTVPLN	-DTVP0070
10	WCPO-DT	CINCINNATI OH	350.3	PLN	DTVPLN	-DTVP0075
10	WIS	COLUMBIA SC	357.1	APP	BPCT	-20000501AEZ
10	WIS	COLUMBIA SC	357.1	LIC	BLCT	-20030210ABB
10	WSMV-DT	NASHVILLE TN	263.3	PLN	DTVPLN	-DTVP0077
10	WSLS-TV	ROANOKE VA	363.4	LIC	BLCT	-19990813LD
11	WJHL-TV	JOHNSON CITY TN	168.4	LIC	BLCT	-2111
11	W22AC D1	HARTWELL & ROYSTON GA	209.0	APP	USERRECORD-01	

Proposal causes no interference

#####

Analysis of Interference to Affected Station 11

Analysis of current record

Channel	Call	City/State	Application	Ref. No.
11	WTZT-CA	ATHENS AL	BLTVL	-19991019AAP

Stations Potentially Affecting This Station

Chan	Call	City/State	Dist(km)	Status	Application	Ref. No.
11	WDIQ	DOZIER AL	362.3	LIC	BPRM	-20000328AAJ
11	WDIQ	DOZIER AL	362.3	LIC	BLEDT	-20031023AAG
11	WXIA-TV	ATLANTA GA	264.7	LIC	BMLCT	-19960208KF
11	WTOK-TV	MERIDIAN MS	317.8	LIC	BLCT	-2503
11	W11BD	LEBANON TN	168.9	CP	BPTVL	-20010326ACD
11	NEW	LEXINGTON TN	157.6	APP	BNPTVL	-20000828AJX
11	WLJT	LEXINGTON TN	182.9	LIC	BLET	-203
11	WETV-LP	MURFREESBORO TN	127.4	APP	BPTVA	-20030822AGE
11	W22AC D1	HARTWELL & ROYSTON GA	369.5	APP	USERRECORD-01	

Proposed station is beyond the site to nearest cell evaluation distance

#####

# Analysis of Interference to Affected Station 12

## Analysis of current record

Channel	Call	City/State	Application Ref. No.
11	WTZT-CA	ATHENS AL	BPTVA -20030808AAD

## Stations Potentially Affecting This Station

Chan	Call	City/State	Dist(km)	Status	Application Ref. No.
11	WDIQ	DOZIER AL	364.2	LIC	BPRM -20000328AAJ
11	WDIQ	DOZIER AL	364.2	LIC	BLEDT -20031023AAG
11	WXIA-TV	ATLANTA GA	250.5	LIC	BMLCT -19960208KF
11	WTOK-TV	MERIDIAN MS	330.7	LIC	BLCT -2503
11	WLJT	LEXINGTON TN	195.8	LIC	BLET -203
11	WETV-LP	MURFREESBORO TN	117.9	LIC	BLTVL -20000203AAU
11	WETV-LP	MURFREESBORO TN	117.9	APP	BPTVA -20030822AGE
12	WDEF-TV	CHATTANOOGA TN	133.5	LIC	BLCT -1619
11	W22AC D1	HARTWELL & ROYSTON GA	352.3	APP	USERRECORD-01

Proposed station is beyond the site to nearest cell evaluation distance

#####

# Analysis of Interference to Affected Station 13

## Analysis of current record

Channel	Call	City/State	Application Ref. No.
11	WBMA-LP	BIRMINGHAM AL	BDISDTL -20060324ABZ

## Stations Potentially Affecting This Station

Chan	Call	City/State	Dist(km)	Status	Application Ref. No.
10	WBIQ	BIRMINGHAM AL	8.6	APP	BFR CET -20050815ACO
10	WBIQ	BIRMINGHAM AL	8.6	LIC	BLET -20040412ACV
11	WTZT-CA	ATHENS AL	153.7	APP	BPTVA -20030808AAD
11	WDIQ	DOZIER AL	214.7	LIC	BPRM -20000328AAJ
11	WDIQ	DOZIER AL	214.7	LIC	BLEDT -20031023AAG
11	WXIA-TV	ATLANTA GA	238.8	LIC	BMLCT -19960208KF
11	WTOK-TV	MERIDIAN MS	209.2	LIC	BLCT -2503
11	WLJT	LEXINGTON TN	296.6	LIC	BLET -203
11	W22AC D1	HARTWELL & ROYSTON GA	376.8	APP	USERRECORD-01

Proposed station is beyond the site to nearest cell evaluation distance

#####

# Analysis of Interference to Affected Station 14

## NTSC Baseline Analysis

Channel	Call	City/State	Application	Ref. No.
11	WXIATV	ATLANTA GA	DTVPLN	-NPLN0706

Stations Potentially Affecting This Station

Chan	Call	City/State	Dist(km)	Status	Application	Ref. No.
10	WXIA-DT	ATLANTA GA	0.0	PLN	DTVPLN	-DTVP0070
11	WFSUTV	TALLAHASSEE FL	378.7	PLN	DTVPLN	-NPLN0705
11	WTCTV	SAVANNAH GA	336.5	PLN	DTVPLN	-NPLN0707
11	WJHLTV	JOHNSON CITY TN	358.1	PLN	DTVPLN	-NPLN0741
12	WDEFTV	CHATTANOOGA TN	178.1	PLN	DTVPLN	-NPLN0795

Results for: 11N GA ATLANTA	DTVPLN	NPLN0706	PLN
	POPULATION	AREA (sq km)	
within Noise Limited Contour	3465897	30015.2	
not affected by terrain losses	3354720	27087.3	
lost to NTSC IX	24837	1138.5	
lost to additional IX by ATV	0	0.0	
lost to all IX	24837	1138.5	

Analysis of current record

Channel	Call	City/State	Application	Ref. No.
11	WXIA-TV	ATLANTA GA	BMLCT	-19960208KF

Stations Potentially Affecting This Station

Chan	Call	City/State	Dist(km)	Status	Application	Ref. No.
10	WXIA-TV	ATLANTA GA	0.0	LIC	BLCDDT	-20040302AAO
10	WXIA-DT	ATLANTA GA	0.0	PLN	DTVPLN	-DTVP0070
11	WDIQ	DOZIER AL	311.6	LIC	BPRM	-20000328AAJ
11	WDIQ	DOZIER AL	311.6	LIC	BLEDT	-20031023AAG
11	WFSU-TV	TALLAHASSEE FL	378.7	LIC	BLET	-343
11	WTOC-TV	SAVANNAH GA	336.5	LIC	BLCT	-2311
11	WTVI	CHARLOTTE NC	373.9	LIC	BMLEDT	-20030428AAT
11	WTVI-DR	CHARLOTTE NC	373.9	LIC	BPRM	-20000411AAG
11	WJHL-TV	JOHNSON CITY TN	358.1	LIC	BLCT	-2111
12	WGTV	ATHENS GA	18.1	CP MOD	BMPEDT	-20020923ABE
12	WGTV-TV	ATHENS GA	18.1	LIC	BPRM	-20010226ABP
12	WDEF-TV	CHATTANOOGA TN	178.1	LIC	BLCT	-1619
11	W22AC D1	HARTWELL & ROYSTON GA	142.5	APP	USERRECORD-01	

Total scenarios = 1

Result key: 6  
Scenario 1 Affected station 14  
Before Analysis

Results for: 11N GA ATLANTA	BMLCT	19960208KF	LIC
	POPULATION	AREA (sq km)	
within Noise Limited Contour	3470482	30115.1	
not affected by terrain losses	3358234	27179.3	
lost to NTSC IX	25070	1144.5	
lost to additional IX by ATV	0	0.0	
lost to all IX	25070	1144.5	

Potential Interfering Stations Included in above Scenario 1

11N FL TALLAHASSEE	BLET	343	LIC
11N GA SAVANNAH	BLCT	2311	LIC
11N TN JOHNSON CITY	BLCT	2111	LIC
12N TN CHATTANOOGA	BLCT	1619	LIC

# After Analysis

Results for: 11N GA ATLANTA                      BMLCT      19960208KF      LIC

	POPULATION	AREA (sq km)
within Noise Limited Contour	3470482	30115.1
not affected by terrain losses	3358234	27179.3
lost to NTSC IX	25070	1144.5
lost to additional IX by ATV	14826	172.1
lost to all IX	39896	1316.6

Potential Interfering Stations Included in above Scenario      1

11N FL TALLAHASSEE	BLET	343	LIC
11N GA SAVANNAH	BLCT	2311	LIC
11N TN JOHNSON CITY	BLCT	2111	LIC
12N TN CHATTANOOGA	BLCT	1619	LIC
11A GA HARTWELL & ROYSTON	USERRECORD01		APP
*Percent new DTV interference without proposal:	0.7	BMLCT	19960208KF
*Percent new DTV interference with proposal:	1.1	BMLCT	19960208KF

#####

## Analysis of Interference to Affected Station 15

### Analysis of current record

Channel	Call	City/State	Application Ref. No.
11	NEW	COLUMBUS GA	BNPTVL -20000830ADF

### Stations Potentially Affecting This Station

Chan	Call	City/State	Dist(km)	Status	Application Ref. No.
11	WDIQ	DOZIER AL	181.6	LIC	BPRM -20000328AAJ
11	WDIQ	DOZIER AL	181.6	LIC	BLEDT -20031023AAG
11	WFSU-TV	TALLAHASSEE FL	250.9	LIC	BLET -343
11	WXIA-TV	ATLANTA GA	139.3	LIC	BMLCT -19960208KF
11	NEW	COLUMBUS GA	9.2	APP	BNPTVL -20000828BGL
11	WTOC-TV	SAVANNAH GA	339.9	LIC	BLCT -2311
11	WTOK-TV	MERIDIAN MS	355.7	LIC	BLCT -2503
11	W22AC D1	HARTWELL & ROYSTON GA	264.0	APP	USERRECORD-01

Proposal causes no interference

#####

## Analysis of Interference to Affected Station 16

### Analysis of current record

Channel	Call	City/State	Application Ref. No.
11	NEW	COLUMBUS GA	BNPTVL -20000828BGL

Stations Potentially Affecting This Station

Chan	Call	City/State	Dist(km)	Status	Application Ref. No.
11	WDIQ	DOZIER AL	172.7	LIC	BPRM -20000328AAJ
11	WDIQ	DOZIER AL	172.7	LIC	BLEDT -20031023AAG
11	WFSU-TV	TALLAHASSEE FL	244.3	LIC	BLET -343
11	WXIA-TV	ATLANTA GA	148.3	LIC	BMLCT -19960208KF
11	NEW	COLUMBUS GA	9.2	APP	BNPTVL -20000830ADF
11	WTOC-TV	SAVANNAH GA	344.2	LIC	BLCT -2311
11	WTOK-TV	MERIDIAN MS	349.8	LIC	BLCT -2503
12	WSFA	MONTGOMERY AL	128.2	LIC	BLCT -2576
11	W22AC D1	HARTWELL & ROYSTON GA	273.2	APP	USERRECORD-01

Proposal causes no interference

#####

Analysis of Interference to Affected Station 17

NTSC Baseline Analysis

Channel	Call	City/State	Application Ref. No.
11	WTOCTV	SAVANNAH GA	DTVPLN -NPLN0707

Stations Potentially Affecting This Station

Chan	Call	City/State	Dist(km)	Status	Application Ref. No.
11	WESH-DT	DAYTONA BEACH FL	346.3	PLN	DTVPLN -DTVP0081
11	WFSUTV	TALLAHASSEE FL	362.8	PLN	DTVPLN -NPLN0705
11	WXIATV	ATLANTA GA	336.5	PLN	DTVPLN -NPLN0706
12	WTLV	JACKSONVILLE FL	198.9	PLN	DTVPLN -NPLN0758
12	WRDWT	AUGUSTA GA	157.4	PLN	DTVPLN -NPLN0760

Results for: 11N GA SAVANNAH	DTVPLN	NPLN0707	PLN
	POPULATION	AREA (sq km)	
within Noise Limited Contour	698162	36409.9	
not affected by terrain losses	696708	36205.5	
lost to NTSC IX	26521	2046.5	
lost to additional IX by ATV	3798	207.3	
lost to all IX	30319	2253.8	

Analysis of current record

Channel	Call	City/State	Application Ref. No.
11	WTOC-TV	SAVANNAH GA	BLCT -2311

Stations Potentially Affecting This Station

Chan	Call	City/State	Dist(km)	Status	Application Ref. No.
10	WJXX	ORANGE PARK FL	198.9	LIC	BLCDDT -20041102AEE
11	WESH	DAYTONA BEACH FL	383.8	LIC	BMLCDDT -20040930AXX
11	WESH-DT	DAYTONA BEACH FL	346.3	PLN	DTVPLN -DTVP0081
11	WFSU-TV	TALLAHASSEE FL	362.8	LIC	BLET -343
11	WXIA-TV	ATLANTA GA	336.5	LIC	BMLCT -19960208KF
11	WTVI	CHARLOTTE NC	364.4	LIC	BMLEDT -20030428AAT

11	WTVI-DR	CHARLOTTE NC	364.4	LIC	BPRM	-20000411AAG
12	WTLV	JACKSONVILLE FL	198.9	LIC	BMLCT	-20040930AKX
12	WRDW-TV	AUGUSTA GA	157.4	LIC	BMLCT	-557
12	WRDW-TV	AUGUSTA GA	157.6	APP	BPCT	-20050228AAC
11	W22AC D1	HARTWELL & ROYSTON GA	291.2	APP	USERRECORD-01	

Proposal causes no interference

#####

#### Analysis of Interference to Affected Station 18

##### Analysis of current record

Channel	Call	City/State	Application Ref. No.
11	W11AX	BAT CAVE, ETC. NC	BLTTV -19800501IB

##### Stations Potentially Affecting This Station

Chan	Call	City/State	Dist(km)	Status	Application Ref. No.
10	W10AP	MARION, ETC. NC	34.8	LIC	BLTTV -19800428IN
10	W10AD	MONTREAT, ETC. NC	23.5	LIC	BLTTV -19790820IE
11	WXIA-TV	ATLANTA GA	265.9	LIC	BMLCT -19960208KF
11	WTOC-TV	SAVANNAH GA	384.5	LIC	BLCT -2311
11	W11AN	BRYSON CITY, ETC. NC	105.2	LIC	BLTTV -4960
11	W11AU	CANTON, ETC. NC	61.2	LIC	BLTTV -19830425IF
11	WTVI	CHARLOTTE NC	142.2	LIC	BMLEDT -20030428AAT
11	WTVI-DR	CHARLOTTE NC	142.2	LIC	BPRM -20000411AAG
11	WTVD	DURHAM NC	337.6	LIC	BLCT -20010709ACP
11	W11AJ	FRANKLIN NC	123.8	LIC	BLTTV -19811211IC
11	W11AQ	ROBBINSVILLE, ETC. NC	141.1	LIC	BLTTV -19821008IB
11	WJHL-TV	JOHNSON CITY TN	111.8	LIC	BLCT -2111
11	WVAH-TV	CHARLESTON WV	332.4	CP	BPCT -20030728ADD
12	W12AQ	BLACK MOUNTAIN NC	22.5	LIC	BLTTV -1804
11	W22AC D1	HARTWELL & ROYSTON GA	139.0	APP	USERRECORD-01

Proposal causes no interference

#####

#### Analysis of Interference to Affected Station 19

##### Analysis of current record

Channel	Call	City/State	Application Ref. No.
11	W11AN	BRYSON CITY, ETC. NC	BLTTV -4960

##### Stations Potentially Affecting This Station

Chan	Call	City/State	Dist(km)	Status	Application Ref. No.
10	W10AL	CHEROKEE, ETC. NC	13.9	LIC	BLTTV -3607
10	WBIR-TV	KNOXVILLE TN	84.0	LIC	BLCT -19800109KE
11	WXIA-TV	ATLANTA GA	199.2	LIC	BMLCT -19960208KF
11	W11AX	BAT CAVE, ETC. NC	105.2	LIC	BLTTV -19800501IB
11	W11AU	CANTON, ETC. NC	50.8	LIC	BLTTV -19830425IF
11	WTVI	CHARLOTTE NC	246.7	LIC	BMLEDT -20030428AAT
11	WTVI-DR	CHARLOTTE NC	246.7	LIC	BPRM -20000411AAG

11	W11AJ	FRANKLIN NC	28.0	LIC	BLTTV	-19811211IC
11	W11AQ	ROBBINSVILLE, ETC. NC	37.3	LIC	BLTTV	-19821008IB
11	WJHL-TV	JOHNSON CITY TN	163.9	LIC	BLCT	-2111
11	WVAH-TV	CHARLESTON WV	362.2	CP	BPCT	-20030728ADD
12	W12AR	WAYNESVILLE, ETC. NC	36.2	LIC	BLTTV	-4877
11	W22AC D1	HARTWELL & ROYSTON GA	126.5	APP	USERRECORD-01	

Proposal causes no interference

#####

# Analysis of Interference to Affected Station 20

## Analysis of current record

Channel	Call	City/State	Application Ref. No.
11	W11AU	CANTON, ETC. NC	BLTTV -19830425IF

## Stations Potentially Affecting This Station

Chan	Call	City/State	Dist(km)	Status	Application Ref. No.
10	W10AL	CHEROKEE, ETC. NC	39.9	LIC	BLTTV -3607
10	WBIR-TV	KNOXVILLE TN	104.6	LIC	BLCT -19800109KE
11	WXIA-TV	ATLANTA GA	240.6	LIC	BMLCT -19960208KF
11	W11AX	BAT CAVE, ETC. NC	61.2	LIC	BLTTV -19800501IB
11	W11AN	BRYSON CITY, ETC. NC	50.8	LIC	BLTTV -4960
11	WTVI	CHARLOTTE NC	202.8	LIC	BMLEDT -20030428AAT
11	WTVI-DR	CHARLOTTE NC	202.8	LIC	BPRM -20000411AAG
11	W11AJ	FRANKLIN NC	76.0	LIC	BLTTV -19811211IC
11	W11AQ	ROBBINSVILLE, ETC. NC	88.0	LIC	BLTTV -19821008IB
11	WJHL-TV	JOHNSON CITY TN	117.6	LIC	BLCT -2111
11	WVAH-TV	CHARLESTON WV	327.1	CP	BPCT -20030728ADD
12	W12AR	WAYNESVILLE, ETC. NC	15.4	LIC	BLTTV -4877
11	W22AC D1	HARTWELL & ROYSTON GA	140.5	APP	USERRECORD-01

Proposal causes no interference

#####

# Analysis of Interference to Affected Station 21

## Analysis of current record

Channel	Call	City/State	Application Ref. No.
11	WTVI	CHARLOTTE NC	BMLEDT -20030428AAT

## Stations Potentially Affecting This Station

Chan	Call	City/State	Dist(km)	Status	Application Ref. No.
10	WIS	COLUMBIA SC	129.3	APP	BPCT -20000501AEZ
10	WIS	COLUMBIA SC	129.3	LIC	BLCT -20030210ABB
10	WSLS-TV	ROANOKE VA	218.3	LIC	BLCT -19990813LD
11	WXIA-TV	ATLANTA GA	373.9	LIC	BMLCT -19960208KF
11	WTOC-TV	SAVANNAH GA	364.4	LIC	BLCT -2311
11	WTVI	DURHAM NC	200.3	LIC	BLCT -20010709ACP
11	WJHL-TV	JOHNSON CITY TN	181.8	LIC	BLCT -2111
11	WVPT	STAUNTON VA	342.7	LIC	BLEDT -20021220ADX

11	WVPT-DT	STAUNTON VA	342.7	PLN	DTVPLN	-DTVP0091
11	WVAH-TV	CHARLESTON WV	363.1	CP	BPCT	-20030728ADD
12	WXII-TV	WINSTON-SALEM NC	124.4	LIC	BLCT	-2283
11	W22AC D1	HARTWELL & ROYSTON GA	231.5	APP	USERRECORD-01	

Total scenarios = 4

Result key: 7  
Scenario 1 Affected station 21  
Before Analysis

Results for: 11A NC CHARLOTTE BMLEDT 20030428AAT LIC  
HAAT 363.0 m, ATV ERP 2.2 kW

	POPULATION	AREA (sq km)
within Noise Limited Contour	1827671	22860.7
not affected by terrain losses	1804357	22130.6
lost to NTSC IX	81701	1708.1
lost to additional IX by ATV	0	0.0
lost to ATV IX only	85	3.0
lost to all IX	81701	1708.1

Potential Interfering Stations Included in above Scenario 1

10N SC COLUMBIA	BLCT	20030210ABB	LIC
11N GA ATLANTA	BMLCT	19960208KF	LIC
11N GA SAVANNAH	BLCT	2311	LIC
11N NC DURHAM	BLCT	20010709ACP	LIC
11N TN JOHNSON CITY	BLCT	2111	LIC
12N NC WINSTON-SALEM	BLCT	2283	LIC
11A VA STAUNTON	BLEDT	20021220ADX	LIC

After Analysis

Results for: 11A NC CHARLOTTE BMLEDT 20030428AAT LIC  
HAAT 363.0 m, ATV ERP 2.2 kW

	POPULATION	AREA (sq km)
within Noise Limited Contour	1827671	22860.7
not affected by terrain losses	1804357	22130.6
lost to NTSC IX	81701	1708.1
lost to additional IX by ATV	0	0.0
lost to ATV IX only	88	5.0
lost to all IX	81701	1708.1

Potential Interfering Stations Included in above Scenario 1

10N SC COLUMBIA	BLCT	20030210ABB	LIC
11N GA ATLANTA	BMLCT	19960208KF	LIC
11N GA SAVANNAH	BLCT	2311	LIC
11N NC DURHAM	BLCT	20010709ACP	LIC
11N TN JOHNSON CITY	BLCT	2111	LIC
12N NC WINSTON-SALEM	BLCT	2283	LIC
11A VA STAUNTON	BLEDT	20021220ADX	LIC
11A GA HARTWELL & ROYSTON	USERRECORD01		APP
*Percent Service lost without proposal:	0.0	to BMLEDT	20030428AAT
*Percent Service lost with proposal:	0.0	to BMLEDT	20030428AAT



Result key: 8  
 Scenario 2 Affected station 21  
 Before Analysis

Results for: 11A NC CHARLOTTE BMLEDT 20030428AAT LIC  
 HAAT 363.0 m, ATV ERP 2.2 kW

	POPULATION	AREA (sq km)
within Noise Limited Contour	1827671	22860.7
not affected by terrain losses	1804357	22130.6
lost to NTSC IX	81701	1708.1
lost to additional IX by ATV	0	0.0
lost to ATV IX only	7	2.0
lost to all IX	81701	1708.1

Potential Interfering Stations Included in above Scenario 2

10N SC COLUMBIA	BLCT	20030210ABB	LIC
11N GA ATLANTA	BMLCT	19960208KF	LIC
11N GA SAVANNAH	BLCT	2311	LIC
11N NC DURHAM	BLCT	20010709ACP	LIC
11N TN JOHNSON CITY	BLCT	2111	LIC
12N NC WINSTON-SALEM	BLCT	2283	LIC
11A VA STAUNTON	DTVPLN	DTVP0091	PLN

After Analysis

Results for: 11A NC CHARLOTTE BMLEDT 20030428AAT LIC  
 HAAT 363.0 m, ATV ERP 2.2 kW

	POPULATION	AREA (sq km)
within Noise Limited Contour	1827671	22860.7
not affected by terrain losses	1804357	22130.6
lost to NTSC IX	81701	1708.1
lost to additional IX by ATV	0	0.0
lost to ATV IX only	10	4.0
lost to all IX	81701	1708.1

Potential Interfering Stations Included in above Scenario 2

10N SC COLUMBIA	BLCT	20030210ABB	LIC
11N GA ATLANTA	BMLCT	19960208KF	LIC
11N GA SAVANNAH	BLCT	2311	LIC
11N NC DURHAM	BLCT	20010709ACP	LIC
11N TN JOHNSON CITY	BLCT	2111	LIC
12N NC WINSTON-SALEM	BLCT	2283	LIC
11A VA STAUNTON	DTVPLN	DTVP0091	PLN
11A GA HARTWELL & ROYSTON	USERRECORD01		APP
*Percent Service lost without proposal:	0.0	to BMLEDT	20030428AAT
*Percent Service lost with proposal:	0.0	to BMLEDT	20030428AAT

Result key: 9  
 Scenario 3 Affected station 21  
 Before Analysis

Results for: 11A NC CHARLOTTE BMLEDT 20030428AAT LIC  
 HAAT 363.0 m, ATV ERP 2.2 kW

	POPULATION	AREA (sq km)
within Noise Limited Contour	1827671	22860.7
not affected by terrain losses	1804357	22130.6
lost to NTSC IX	81701	1708.1
lost to additional IX by ATV	0	0.0
lost to ATV IX only	85	3.0
lost to all IX	81701	1708.1

Potential Interfering Stations Included in above Scenario 3

10N SC COLUMBIA	BPCT	20000501AEZ	APP
11N GA ATLANTA	BMLCT	19960208KF	LIC
11N GA SAVANNAH	BLCT	2311	LIC
11N NC DURHAM	BLCT	20010709ACP	LIC
11N TN JOHNSON CITY	BLCT	2111	LIC
12N NC WINSTON-SALEM	BLCT	2283	LIC
11A VA STAUNTON	BLEDT	20021220ADX	LIC

After Analysis

Results for: 11A NC CHARLOTTE BMLEDT 20030428AAT LIC  
HAAT 363.0 m, ATV ERP 2.2 kW

	POPULATION	AREA (sq km)
within Noise Limited Contour	1827671	22860.7
not affected by terrain losses	1804357	22130.6
lost to NTSC IX	81701	1708.1
lost to additional IX by ATV	0	0.0
lost to ATV IX only	88	5.0
lost to all IX	81701	1708.1

Potential Interfering Stations Included in above Scenario 3

10N SC COLUMBIA	BPCT	20000501AEZ	APP
11N GA ATLANTA	BMLCT	19960208KF	LIC
11N GA SAVANNAH	BLCT	2311	LIC
11N NC DURHAM	BLCT	20010709ACP	LIC
11N TN JOHNSON CITY	BLCT	2111	LIC
12N NC WINSTON-SALEM	BLCT	2283	LIC
11A VA STAUNTON	BLEDT	20021220ADX	LIC
11A GA HARTWELL & ROYSTON	USERRECORD01		APP
*Percent Service lost without proposal:	0.0	to BMLEDT	20030428AAT
*Percent Service lost with proposal:	0.0	to BMLEDT	20030428AAT

Result key: 10  
Scenario 4 Affected station 21  
Before Analysis

Results for: 11A NC CHARLOTTE BMLEDT 20030428AAT LIC  
HAAT 363.0 m, ATV ERP 2.2 kW

	POPULATION	AREA (sq km)
within Noise Limited Contour	1827671	22860.7
not affected by terrain losses	1804357	22130.6
lost to NTSC IX	81701	1708.1
lost to additional IX by ATV	0	0.0
lost to ATV IX only	7	2.0
lost to all IX	81701	1708.1

Potential Interfering Stations Included in above Scenario 4

10N SC COLUMBIA	BPCT	20000501AEZ	APP
11N GA ATLANTA	BMLCT	19960208KF	LIC
11N GA SAVANNAH	BLCT	2311	LIC
11N NC DURHAM	BLCT	20010709ACP	LIC
11N TN JOHNSON CITY	BLCT	2111	LIC
12N NC WINSTON-SALEM	BLCT	2283	LIC
11A VA STAUNTON	DTVPLN	DTVP0091	PLN

After Analysis

Results for: 11A NC CHARLOTTE BMLEDT 20030428AAT LIC  
 HAAT 363.0 m, ATV ERP 2.2 kW

	POPULATION	AREA (sq km)
within Noise Limited Contour	1827671	22860.7
not affected by terrain losses	1804357	22130.6
lost to NTSC IX	81701	1708.1
lost to additional IX by ATV	0	0.0
lost to ATV IX only	10	4.0
lost to all IX	81701	1708.1

Potential Interfering Stations Included in above Scenario 4

10N SC COLUMBIA	BPCT	20000501AEZ	APP
11N GA ATLANTA	BMLCT	19960208KF	LIC
11N GA SAVANNAH	BLCT	2311	LIC
11N NC DURHAM	BLCT	20010709ACP	LIC
11N TN JOHNSON CITY	BLCT	2111	LIC
12N NC WINSTON-SALEM	BLCT	2283	LIC
11A VA STAUNTON	DTVPLN	DTVP0091	PLN
11A GA HARTWELL & ROYSTON	USERRECORD01		APP
*Percent Service lost without proposal:	0.0	to BMLEDT	20030428AAT
*Percent Service lost with proposal:	0.0	to BMLEDT	20030428AAT

#####

Analysis of Interference to Affected Station 22

Analysis of current record

Channel	Call	City/State	Application	Ref. No.
11	WTVI-DR	CHARLOTTE NC	BPRM	-20000411AAG

Stations Potentially Affecting This Station

Chan	Call	City/State	Dist(km)	Status	Application	Ref. No.
10	WIS	COLUMBIA SC	129.3	APP	BPCT	-20000501AEZ
10	WIS	COLUMBIA SC	129.3	LIC	BLCT	-20030210ABB
10	WSLS-TV	ROANOKE VA	218.3	LIC	BLCT	-19990813LD
11	WXIA-TV	ATLANTA GA	373.9	LIC	BMLCT	-19960208KF
11	WTOC-TV	SAVANNAH GA	364.4	LIC	BLCT	-2311
11	WTVI	DURHAM NC	200.3	LIC	BLCT	-20010709ACP
11	WJHL-TV	JOHNSON CITY TN	181.8	LIC	BLCT	-2111

11	WVPT	STAUNTON VA	342.7	LIC	BLEDT	-20021220ADX
11	WVPT-DT	STAUNTON VA	342.7	PLN	DTVPLN	-DTVP0091
11	WVAH-TV	CHARLESTON WV	363.1	CP	BPCT	-20030728ADD
12	WXII-TV	WINSTON-SALEM NC	124.4	LIC	BLCT	-2283
11	W22AC D1	HARTWELL & ROYSTON GA	231.5	APP	USERRECORD-01	

Total scenarios = 2

Result key: 11  
Scenario 1 Affected station 22  
Before Analysis

Results for: 11A NC CHARLOTTE BPRM 20000411AAG LIC  
HAAT 390.0 m, ATV ERP 2.0 kW

	POPULATION	AREA (sq km)
within Noise Limited Contour	1849295	23349.7
not affected by terrain losses	1827379	22595.8
lost to NTSC IX	80853	1741.0
lost to additional IX by ATV	0	0.0
lost to ATV IX only	0	0.0
lost to all IX	80853	1741.0

Potential Interfering Stations Included in above Scenario 1

10N SC COLUMBIA	BLCT	20030210ABB	LIC
11N GA ATLANTA	BMLCT	19960208KF	LIC
11N GA SAVANNAH	BLCT	2311	LIC
11N NC DURHAM	BLCT	20010709ACP	LIC
11N TN JOHNSON CITY	BLCT	2111	LIC
12N NC WINSTON-SALEM	BLCT	2283	LIC

After Analysis

Results for: 11A NC CHARLOTTE BPRM 20000411AAG LIC  
HAAT 390.0 m, ATV ERP 2.0 kW

	POPULATION	AREA (sq km)
within Noise Limited Contour	1849295	23349.7
not affected by terrain losses	1827379	22595.8
lost to NTSC IX	80853	1741.0
lost to additional IX by ATV	0	0.0
lost to ATV IX only	194	4.0
lost to all IX	80853	1741.0

Potential Interfering Stations Included in above Scenario 1

10N SC COLUMBIA	BLCT	20030210ABB	LIC
11N GA ATLANTA	BMLCT	19960208KF	LIC
11N GA SAVANNAH	BLCT	2311	LIC
11N NC DURHAM	BLCT	20010709ACP	LIC
11N TN JOHNSON CITY	BLCT	2111	LIC
12N NC WINSTON-SALEM	BLCT	2283	LIC
11A GA HARTWELL & ROYSTON	USERRECORD01		APP
*Percent Service lost without proposal:		0.0	to BPRM 20000411AAG
*Percent Service lost with proposal:		0.0	to BPRM 20000411AAG

Result key: 12  
 Scenario 2 Affected station 22  
 Before Analysis

Results for: 11A NC CHARLOTTE BPRM 20000411AAG LIC  
 HAAT 390.0 m, ATV ERP 2.0 kW

	POPULATION	AREA (sq km)
within Noise Limited Contour	1849295	23349.7
not affected by terrain losses	1827379	22595.8
lost to NTSC IX	80853	1741.0
lost to additional IX by ATV	0	0.0
lost to ATV IX only	0	0.0
lost to all IX	80853	1741.0

Potential Interfering Stations Included in above Scenario 2

10N SC COLUMBIA	BPCT	20000501AEZ	APP
11N GA ATLANTA	BMLCT	19960208KF	LIC
11N GA SAVANNAH	BLCT	2311	LIC
11N NC DURHAM	BLCT	20010709ACP	LIC
11N TN JOHNSON CITY	BLCT	2111	LIC
12N NC WINSTON-SALEM	BLCT	2283	LIC

After Analysis

Results for: 11A NC CHARLOTTE BPRM 20000411AAG LIC  
 HAAT 390.0 m, ATV ERP 2.0 kW

	POPULATION	AREA (sq km)
within Noise Limited Contour	1849295	23349.7
not affected by terrain losses	1827379	22595.8
lost to NTSC IX	80853	1741.0
lost to additional IX by ATV	0	0.0
lost to ATV IX only	194	4.0
lost to all IX	80853	1741.0

Potential Interfering Stations Included in above Scenario 2

10N SC COLUMBIA	BPCT	20000501AEZ	APP
11N GA ATLANTA	BMLCT	19960208KF	LIC
11N GA SAVANNAH	BLCT	2311	LIC
11N NC DURHAM	BLCT	20010709ACP	LIC
11N TN JOHNSON CITY	BLCT	2111	LIC
12N NC WINSTON-SALEM	BLCT	2283	LIC
11A GA HARTWELL & ROYSTON	USERRECORD01		APP
*Percent Service lost without proposal:	0.0	to BPRM	20000411AAG
*Percent Service lost with proposal:	0.0	to BPRM	20000411AAG

#####

Analysis of Interference to Affected Station 23

Analysis of current record

Channel	Call	City/State	Application	Ref. No.
11	W11AJ	FRANKLIN NC	BLTTV	-19811211IC

# Stations Potentially Affecting This Station

Chan	Call	City/State	Dist(km)	Status	Application	Ref. No.
10	W10AQ	YOUNG HARRIS GA	40.0	LIC	BLTTV	-4061
10	W10AL	CHEROKEE, ETC. NC	41.8	LIC	BLTTV	-3607
10	WBIR-TV	KNOXVILLE TN	98.3	LIC	BLCT	-19800109KE
11	WXIA-TV	ATLANTA GA	171.5	LIC	BMLCT	-19960208KF
11	W11AX	BAT CAVE, ETC. NC	123.8	LIC	BLTTV	-19800501IB
11	W11AN	BRYSON CITY, ETC. NC	28.0	LIC	BLTTV	-4960
11	W11AU	CANTON, ETC. NC	76.0	LIC	BLTTV	-19830425IF
11	WTVI	CHARLOTTE NC	262.3	LIC	BMLED	-20030428AAT
11	WTVI-DR	CHARLOTTE NC	262.3	LIC	BPRM	-20000411AAG
11	W11AQ	ROBBINSVILLE, ETC. NC	21.8	LIC	BLTTV	-19821008IB
11	WJHL-TV	JOHNSON CITY TN	191.4	LIC	BLCT	-2111
11	WETV-LP	MURFREESBORO TN	264.9	APP	BPTVA	-20030822AGE
11	WVAH-TV	CHARLESTON WV	389.6	CP	BPCT	-20030728ADD
11	W22AC D1	HARTWELL & ROYSTON GA	112.0	APP	USERRECORD-01	

Proposal causes no interference

#####

## Analysis of Interference to Affected Station 24

### Analysis of current record

Channel	Call	City/State	Application	Ref. No.
11	W11AQ	ROBBINSVILLE, ETC. NC	BLTTV	-19821008IB

# Stations Potentially Affecting This Station

Chan	Call	City/State	Dist(km)	Status	Application	Ref. No.
10	W10AQ	YOUNG HARRIS GA	37.1	LIC	BLTTV	-4061
10	W10AL	CHEROKEE, ETC. NC	49.1	LIC	BLTTV	-3607
10	WBIR-TV	KNOXVILLE TN	84.1	LIC	BLCT	-19800109KE
11	WXIA-TV	ATLANTA GA	173.9	LIC	BMLCT	-19960208KF
11	WHAS-TV	LOUISVILLE KY	389.8	LIC	BLCT	-19820811KF
11	W11AX	BAT CAVE, ETC. NC	141.1	LIC	BLTTV	-19800501IB
11	W11AN	BRYSON CITY, ETC. NC	37.3	LIC	BLTTV	-4960
11	W11AU	CANTON, ETC. NC	88.0	LIC	BLTTV	-19830425IF
11	WTVI	CHARLOTTE NC	281.4	LIC	BMLED	-20030428AAT
11	WTVI-DR	CHARLOTTE NC	281.4	LIC	BPRM	-20000411AAG
11	W11AJ	FRANKLIN NC	21.8	LIC	BLTTV	-19811211IC
11	WJHL-TV	JOHNSON CITY TN	198.5	LIC	BLCT	-2111
11	WETV-LP	MURFREESBORO TN	243.4	APP	BPTVA	-20030822AGE
11	WVAH-TV	CHARLESTON WV	388.5	CP	BPCT	-20030728ADD
11	W22AC D1	HARTWELL & ROYSTON GA	131.1	APP	USERRECORD-01	

Proposal causes no interference

#####

## Analysis of Interference to Affected Station 25

### Analysis of current record

Channel	Call	City/State	Application Ref. No.
11	WGSJ-CA	MURRELLS INLET SC	BMPTVA -20050811ABF

#### Stations Potentially Affecting This Station

Chan	Call	City/State	Dist(km)	Status	Application Ref. No.
11	WTOC-TV	SAVANNAH GA	274.6	LIC	BLCT -2311
11	WTVI	CHARLOTTE NC	241.6	LIC	BMLEDT -20030428AAT
11	WTVI-DR	CHARLOTTE NC	241.6	LIC	BPRM -20000411AAG
11	WTVI	DURHAM NC	235.6	LIC	BLCT -20010709ACP
11	W22AC D1	HARTWELL & ROYSTON GA	367.4	APP	USERRECORD-01

Proposed station is beyond the site to  
nearest cell evaluation distance

#####

#### Analysis of Interference to Affected Station 26

##### Analysis of current record

Channel	Call	City/State	Application Ref. No.
11	WGSJ-CA	MURRELLS INLET SC	BLTVA -20050912AAZ

#### Stations Potentially Affecting This Station

Chan	Call	City/State	Dist(km)	Status	Application Ref. No.
11	WTOC-TV	SAVANNAH GA	274.6	LIC	BLCT -2311
11	WTVI	CHARLOTTE NC	241.6	LIC	BMLEDT -20030428AAT
11	WTVI-DR	CHARLOTTE NC	241.6	LIC	BPRM -20000411AAG
11	WTVI	DURHAM NC	235.6	LIC	BLCT -20010709ACP
11	W22AC D1	HARTWELL & ROYSTON GA	367.4	APP	USERRECORD-01

Proposed station is beyond the site to  
nearest cell evaluation distance

#####

#### Analysis of Interference to Affected Station 27

##### NTSC Baseline Analysis

Channel	Call	City/State	Application Ref. No.
11	WJHLTV	JOHNSON CITY TN	DTVPLN -NPLN0741

#### Stations Potentially Affecting This Station

Chan	Call	City/State	Dist(km)	Status	Application Ref. No.
10	WBIRTV	KNOXVILLE TN	168.4	PLN	DTVPLN -NPLN0682
10	WSLSTV	ROANOKE VA	196.5	PLN	DTVPLN -NPLN0689
11	WXIATV	ATLANTA GA	358.1	PLN	DTVPLN -NPLN0706
11	WHASTV	LOUISVILLE KY	391.2	PLN	DTVPLN -NPLN0715
11	WTVI	DURHAM NC	334.9	PLN	DTVPLN -NPLN0724
11	WVPT-DT	STAUNTON VA	315.3	PLN	DTVPLN -DTVP0091
11	WVAHTV	CHARLESTON WV	221.9	PLN	DTVPLN -NPLN0749

12	WYMT-DT	HAZARD KY	125.7	PLN	DTVPLN	-DTVP0101
12	WXII	WINSTON-SALEM NC	157.9	PLN	DTVPLN	-NPLN0779

Results for: 11N TN JOHNSON CITY                      DTVPLN      NPLN0741      PLN

	POPULATION	AREA (sq km)
within Noise Limited Contour	1786346	46396.9
not affected by terrain losses	1083596	31462.6
lost to NTSC IX	59475	1755.9
lost to additional IX by ATV	0	9.8
lost to all IX	59475	1765.7

#### Analysis of current record

Channel	Call	City/State	Application	Ref. No.
11	WJHL-TV	JOHNSON CITY TN	BLCT	-2111

#### Stations Potentially Affecting This Station

Chan	Call	City/State	Dist(km)	Status	Application	Ref. No.
10	WBIR-TV	KNOXVILLE TN	168.4	LIC	BLCT	-19800109KE
10	WSLS-TV	ROANOKE VA	196.5	LIC	BLCT	-19990813LD
11	WXIA-TV	ATLANTA GA	358.1	LIC	BMLCT	-19960208KF
11	WHAS-TV	LOUISVILLE KY	391.2	LIC	BLCT	-19820811KF
11	WTVI	CHARLOTTE NC	181.8	LIC	BMLEDT	-20030428AAT
11	WTVI-DR	CHARLOTTE NC	181.8	LIC	BPRM	-20000411AAG
11	WTVD	DURHAM NC	334.8	LIC	BLCT	-20010709ACP
11	WVPT	STAUNTON VA	315.3	LIC	BLEDT	-20021220ADX
11	WVPT-DT	STAUNTON VA	315.3	PLN	DTVPLN	-DTVP0091
11	WVAH-TV	CHARLESTON WV	220.6	CP	BPCT	-20030728ADD
12	WYMT-DT	HAZARD KY	125.7	PLN	DTVPLN	-DTVP0101
12	WYMT-TV	HAZARD KY	125.7	LIC	BLCDT	-20040109ACY
12	WXII-TV	WINSTON-SALEM NC	157.9	LIC	BLCT	-2283
11	W22AC D1	HARTWELL & ROYSTON GA	246.5	APP	USERRECORD-01	

Total scenarios = 2

Result key: 13  
Scenario 1 Affected station 27  
Before Analysis

Results for: 11N TN JOHNSON CITY                      BLCT      2111      LIC

	POPULATION	AREA (sq km)
within Noise Limited Contour	1786346	46396.9
not affected by terrain losses	1083596	31462.6
lost to NTSC IX	60149	1732.3
lost to additional IX by ATV	6200	359.2
lost to all IX	66349	2091.6

#### Potential Interfering Stations Included in above Scenario 1

10N TN KNOXVILLE	BLCT	19800109KE	LIC
10N VA ROANOKE	BLCT	19990813LD	LIC
11N GA ATLANTA	BMLCT	19960208KF	LIC
11N KY LOUISVILLE	BLCT	19820811KF	LIC
11N NC DURHAM	BLCT	20010709ACP	LIC
11N WV CHARLESTON	BPCT	20030728ADD	CP
12N NC WINSTON-SALEM	BLCT	2283	LIC



11A NC CHARLOTTE	BMLEDT	20030428AAT	LIC
11A VA STAUNTON	BLEDT	20021220ADX	LIC
12A KY HAZARD	BLCDDT	20040109ACY	LIC

After Analysis

Results for: 11N TN JOHNSON CITY	BLCT	2111	LIC
	POPULATION	AREA (sq km)	
within Noise Limited Contour	1786346	46396.9	
not affected by terrain losses	1083596	31462.6	
lost to NTSC IX	60149	1732.3	
lost to additional IX by ATV	6200	359.2	
lost to all IX	66349	2091.6	

Potential Interfering Stations Included in above Scenario 1

10N TN KNOXVILLE	BLCT	19800109KE	LIC
10N VA ROANOKE	BLCT	19990813LD	LIC
11N GA ATLANTA	BMLCT	19960208KF	LIC
11N KY LOUISVILLE	BLCT	19820811KF	LIC
11N NC DURHAM	BLCT	20010709ACP	LIC
11N WV CHARLESTON	BPCT	20030728ADD	CP
12N NC WINSTON-SALEM	BLCT	2283	LIC
11A NC CHARLOTTE	BMLEDT	20030428AAT	LIC
11A VA STAUNTON	BLEDT	20021220ADX	LIC
12A KY HAZARD	BLCDDT	20040109ACY	LIC
11A GA HARTWELL & ROYSTON	USERRECORD01	APP	
*Percent new DTV interference without proposal:	3.7	BLCT	2111
*Percent new DTV interference with proposal:	3.7	BLCT	2111

Result key: 14  
Scenario 2 Affected station 27  
Before Analysis

Results for: 11N TN JOHNSON CITY	BLCT	2111	LIC
	POPULATION	AREA (sq km)	
within Noise Limited Contour	1786346	46396.9	
not affected by terrain losses	1083596	31462.6	
lost to NTSC IX	60149	1732.3	
lost to additional IX by ATV	6207	357.3	
lost to all IX	66356	2089.6	

Potential Interfering Stations Included in above Scenario 2

10N TN KNOXVILLE	BLCT	19800109KE	LIC
10N VA ROANOKE	BLCT	19990813LD	LIC
11N GA ATLANTA	BMLCT	19960208KF	LIC
11N KY LOUISVILLE	BLCT	19820811KF	LIC
11N NC DURHAM	BLCT	20010709ACP	LIC
11N WV CHARLESTON	BPCT	20030728ADD	CP
12N NC WINSTON-SALEM	BLCT	2283	LIC
11A NC CHARLOTTE	BPRM	20000411AAG	LIC
11A VA STAUNTON	BLEDT	20021220ADX	LIC
12A KY HAZARD	BLCDDT	20040109ACY	LIC

After Analysis

Results for: 11N TN JOHNSON CITY	BLCT	2111	LIC
	POPULATION	AREA (sq km)	
within Noise Limited Contour	1786346	46396.9	
not affected by terrain losses	1083596	31462.6	
lost to NTSC IX	60149	1732.3	
lost to additional IX by ATV	6207	357.3	
lost to all IX	66356	2089.6	

Potential Interfering Stations Included in above Scenario 2

10N TN KNOXVILLE	BLCT	19800109KE	LIC
10N VA ROANOKE	BLCT	19990813LD	LIC
11N GA ATLANTA	BMLCT	19960208KF	LIC
11N KY LOUISVILLE	BLCT	19820811KF	LIC
11N NC DURHAM	BLCT	20010709ACP	LIC
11N WV CHARLESTON	BPCT	20030728ADD	CP
12N NC WINSTON-SALEM	BLCT	2283	LIC
11A NC CHARLOTTE	BPRM	20000411AAG	LIC
11A VA STAUNTON	BLEDT	20021220ADX	LIC
12A KY HAZARD	BLCDDT	20040109ACY	LIC
11A GA HARTWELL & ROYSTON	USERRECORD01		APP
*Percent new DTV interference without proposal:		3.7	BLCT 2111
*Percent new DTV interference with proposal:		3.7	BLCT 2111

#####

#### Analysis of Interference to Affected Station 28

##### Analysis of current record

Channel	Call	City/State	Application	Ref. No.
11	W11BD	LEBANON TN	BPTVL	-20010326ACD

##### Stations Potentially Affecting This Station

Chan	Call	City/State	Dist(km)	Status	Application	Ref. No.
10	WSMV-DT	NASHVILLE TN	53.5	PLN	DTVPLN	-DTVP0077
11	WTZT-CA	ATHENS AL	159.7	APP	BPTVA	-20030808AAD
11	WXIA-TV	ATLANTA GA	324.5	LIC	BMLCT	-19960208KF
11	WHAS-TV	LOUISVILLE KY	242.1	LIC	BLCT	-19820811KF
11	WJHL-TV	JOHNSON CITY TN	371.4	LIC	BLCT	-2111
11	WLJT	LEXINGTON TN	216.7	LIC	BLET	-203
11	WETV-LP	MURFREESBORO TN	41.8	LIC	BLTVL	-20000203AAU
11	WETV-LP	MURFREESBORO TN	41.8	APP	BPTVA	-20030822AGE
11	W22AC D1	HARTWELL & ROYSTON GA	368.7	APP	USERRECORD-01	

Proposal causes no interference

#####

#### Analysis of Interference to Affected Station 29

##### Analysis of current record

Channel	Call	City/State	Application Ref. No.
11	W11BD	LEBANON TN	BLTVL -19870219IA

Stations Potentially Affecting This Station

Chan	Call	City/State	Dist(km)	Status	Application Ref. No.
10	WSMV-DT	NASHVILLE TN	53.5	PLN	DTVPLN -DTVP0077
11	WXIA-TV	ATLANTA GA	324.5	LIC	BMLCT -19960208KF
11	WHAS-TV	LOUISVILLE KY	242.1	LIC	BLCT -19820811KF
11	WJHL-TV	JOHNSON CITY TN	371.4	LIC	BLCT -2111
11	WLJT	LEXINGTON TN	216.7	LIC	BLET -203
11	WETV-LP	MURFREESBORO TN	41.8	LIC	BLTVL -20000203AAU
11	WETV-LP	MURFREESBORO TN	41.8	APP	BPTVA -20030822AGE
11	W22AC D1	HARTWELL & ROYSTON GA	368.7	APP	USERRECORD-01

Proposal causes no interference

#####

Analysis of Interference to Affected Station 30

Analysis of current record

Channel	Call	City/State	Application Ref. No.
11	WETV-LP	MURFREESBORO TN	BLTVL -20000203AAU

Stations Potentially Affecting This Station

Chan	Call	City/State	Dist(km)	Status	Application Ref. No.
10	WSMV-DT	NASHVILLE TN	54.2	PLN	DTVPLN -DTVP0077
11	WTZT-CA	ATHENS AL	117.9	APP	BPTVA -20030808AAD
11	WXIA-TV	ATLANTA GA	298.2	LIC	BMLCT -19960208KF
11	WHAS-TV	LOUISVILLE KY	283.7	LIC	BLCT -19820811KF
11	WJHL-TV	JOHNSON CITY TN	387.4	LIC	BLCT -2111
11	W11BD	LEBANON TN	41.8	CP	BPTVL -20010326ACD
11	WLJT	LEXINGTON TN	200.1	LIC	BLET -203
12	WDEF-TV	CHATTANOOGA TN	124.4	LIC	BLCT -1619
11	W22AC D1	HARTWELL & ROYSTON GA	357.1	APP	USERRECORD-01

Proposed station is beyond the site to  
nearest cell evaluation distance

#####

Analysis of Interference to Affected Station 31

Analysis of current record

Channel	Call	City/State	Application Ref. No.
11	WETV-LP	MURFREESBORO TN	BPTVA -20030822AGE

Stations Potentially Affecting This Station

Chan	Call	City/State	Dist(km)	Status	Application Ref. No.
10	WSMV-DT	NASHVILLE TN	54.2	PLN	DTVPLN -DTVP0077
11	WTZT-CA	ATHENS AL	127.4	LIC	BLTVL -19991019AAP

11	WTZT-CA	ATHENS AL	117.9	APP	BPTVA	-20030808AAD
11	WXIA-TV	ATLANTA GA	298.2	LIC	BMLCT	-19960208KF
11	WHAS-TV	LOUISVILLE KY	283.7	LIC	BLCT	-19820811KF
11	WJHL-TV	JOHNSON CITY TN	387.4	LIC	BLCT	-2111
11	W11BD	LEBANON TN	41.8	CP	BPTVL	-20010326ACD
11	WLJT	LEXINGTON TN	200.1	LIC	BLET	-203
12	WDEF-TV	CHATTANOOGA TN	124.4	LIC	BLCT	-1619
12	WRMX-LP	NASHVILLE TN	45.7	LIC	BLTVL	-19950328IB
11	W22AC D1	HARTWELL & ROYSTON GA	357.1	APP	USERRECORD-01	

Proposed station is beyond the site to  
nearest cell evaluation distance

#####

#### Analysis of Interference to Affected Station 32

##### Analysis of current record

Channel	Call	City/State	Application Ref. No.
12	WGTV	ATHENS GA	BMPEDT -20020923ABE

##### Stations Potentially Affecting This Station

Chan	Call	City/State	Dist(km)	Status	Application Ref. No.
11	WXIA-TV	ATLANTA GA	18.1	LIC	BMLCT -19960208KF
12	WSFA	MONTGOMERY AL	277.2	LIC	BLCT -2576
12	WFXL	ALBANY GA	276.2	CP	BPCDT -20000427ABX
12	WFXL	ALBANY GA	276.2	LIC	BPRM -19990625AAX
12	WRDW-TV	AUGUSTA GA	217.5	LIC	BMLCT -557
12	WRDW-TV	AUGUSTA GA	217.5	APP	BPCT -20050228AAC
12	WYMT-DT	HAZARD KY	386.6	PLN	DTVPLN -DTVP0101
12	WYMT-TV	HAZARD KY	386.6	LIC	BLCDDT -20040109ACY
12	WDEF-TV	CHATTANOOGA TN	183.1	LIC	BLCT -1619
13	WMAZ-TV	MACON GA	129.0	APP	BFRCTT -20050811ABV
13	WMAZ-TV	MACON GA	129.0	LIC	BLCT -2397
13	WLOS	ASHEVILLE NC	220.3	APP	BFRCTT -20050812AAI
13	WLOS	ASHEVILLE NC	220.3	LIC	BLCT -2599
13	WRCB-TV	CHATTANOOGA TN	184.9	LIC	BLCDDT -20041027ADA
13	WRCBTV	CHATTANOOGA TN	185.0	LIC	BPRM -20000328AAG
11	W22AC D1	HARTWELL & ROYSTON GA	124.6	APP	USERRECORD-01

Proposal causes no interference

#####

#### Analysis of Interference to Affected Station 33

##### Analysis of current record

Channel	Call	City/State	Application Ref. No.
12	WGTV-TV	ATHENS GA	BPRM -20010226ABP

##### Stations Potentially Affecting This Station

Chan	Call	City/State	Dist(km)	Status	Application Ref. No.
------	------	------------	----------	--------	----------------------

11	WXIA-TV	ATLANTA GA	18.1	LIC	BMLCT	-19960208KF
12	WSFA	MONTGOMERY AL	277.2	LIC	BLCT	-2576
12	WFXL	ALBANY GA	276.2	CP	BPCDT	-20000427ABX
12	WFXL	ALBANY GA	276.2	LIC	BPRM	-19990625AAX
12	WRDW-TV	AUGUSTA GA	217.5	LIC	BMLCT	-557
12	WRDW-TV	AUGUSTA GA	217.5	APP	BPCT	-20050228AAC
12	WYMT-DT	HAZARD KY	386.6	PLN	DTVPLN	-DTVP0101
12	WYMT-TV	HAZARD KY	386.6	LIC	BLCDDT	-20040109ACY
12	WDEF-TV	CHATTANOOGA TN	183.1	LIC	BLCT	-1619
13	WMAZ-TV	MACON GA	129.0	APP	BFRCTT	-20050811ABV
13	WMAZ-TV	MACON GA	129.0	LIC	BLCT	-2397
13	WLOS	ASHEVILLE NC	220.3	APP	BFRCTT	-20050812AAI
13	WLOS	ASHEVILLE NC	220.3	LIC	BLCT	-2599
13	WRCB-TV	CHATTANOOGA TN	184.9	LIC	BLCDDT	-20041027ADA
13	WRCBTV	CHATTANOOGA TN	185.0	LIC	BPRM	-20000328AAG
11	W22AC D1	HARTWELL & ROYSTON GA	124.6	APP	USERRECORD-01	

Proposal causes no interference

#####

#### Analysis of Interference to Affected Station 34

##### NTSC Baseline Analysis

Channel	Call	City/State	Application	Ref. No.
12	WRDWTB	AUGUSTA GA	DTVPLN	-NPLN0760

##### Stations Potentially Affecting This Station

Chan	Call	City/State	Dist(km)	Status	Application	Ref. No.
11	WTCTV	SAVANNAH GA	157.4	PLN	DTVPLN	-NPLN0707
12	WTLV	JACKSONVILLE FL	349.5	PLN	DTVPLN	-NPLN0758
12	WXII	WINSTON-SALEM NC	356.0	PLN	DTVPLN	-NPLN0779
12	WDEFTV	CHATTANOOGA TN	372.8	PLN	DTVPLN	-NPLN0795
13	WMAZTV	MACON GA	175.6	PLN	DTVPLN	-NPLN0823

Results for: 12N GA AUGUSTA	DTVPLN	NPLN0760	PLN
	POPULATION	AREA (sq km)	
within Noise Limited Contour	1235063	38622.2	
not affected by terrain losses	1182590	36816.3	
lost to NTSC IX	259014	4528.7	
lost to additional IX by ATV	0	0.0	
lost to all IX	259014	4528.7	

##### Analysis of current record

Channel	Call	City/State	Application	Ref. No.
12	WRDW-TV	AUGUSTA GA	BMLCT	-557

##### Stations Potentially Affecting This Station

Chan	Call	City/State	Dist(km)	Status	Application	Ref. No.
11	WTOC-TV	SAVANNAH GA	157.4	LIC	BLCT	-2311
12	WTLV	JACKSONVILLE FL	349.5	LIC	BMLCT	-20040930AKX
12	WFXL	ALBANY GA	298.7	CP	BPCDT	-20000427ABX
12	WFXL	ALBANY GA	298.7	LIC	BPRM	-19990625AAX
12	WGTV	ATHENS GA	217.5	CP MOD	BMPEDT	-20020923ABE

12	WGTV-TV	ATHENS GA	217.5	LIC	BPRM	-20010226ABP
12	WXII-TV	WINSTON-SALEM NC	356.0	LIC	BLCT	-2283
12	WDEF-TV	CHATTANOOGA TN	372.8	LIC	BLCT	-1619
13	WMAZ-TV	MACON GA	175.6	APP	BFRCT	-20050811ABV
13	WMAZ-TV	MACON GA	175.6	LIC	BLCT	-2397
13	WVAN-TV	SAVANNAH GA	141.8	CP MOD	BMPEDT	-20020923ABA
13	WVAN-TV	SAVANNAH GA	141.8	LIC	BPRM	-20010327AJC
11	W22AC D1	HARTWELL & ROYSTON GA	142.5	APP	USERRECORD-01	

Total scenarios = 8

Result key: 15  
Scenario 1 Affected station 34  
Before Analysis

Results for: 12N GA AUGUSTA	BMLCT	557	LIC
	POPULATION	AREA (sq km)	
within Noise Limited Contour	1235063	38622.2	
not affected by terrain losses	1182590	36816.3	
lost to NTSC IX	259026	4530.6	
lost to additional IX by ATV	34902	2494.3	
lost to all IX	293928	7024.9	

Potential Interfering Stations Included in above Scenario 1

11N GA SAVANNAH	BLCT	2311	LIC
12N FL JACKSONVILLE	BMLCT	20040930AKX	LIC
12N NC WINSTON-SALEM	BLCT	2283	LIC
12N TN CHATTANOOGA	BLCT	1619	LIC
13N GA MACON	BLCT	2397	LIC
12A GA ALBANY	BPCDT	20000427ABX	CP
12A GA ATHENS	BMPEDT	20020923ABE	CP
13A GA SAVANNAH	BMPEDT	20020923ABA	CP

After Analysis

Results for: 12N GA AUGUSTA	BMLCT	557	LIC
	POPULATION	AREA (sq km)	
within Noise Limited Contour	1235063	38622.2	
not affected by terrain losses	1182590	36816.3	
lost to NTSC IX	259026	4530.6	
lost to additional IX by ATV	34902	2494.3	
lost to all IX	293928	7024.9	

Potential Interfering Stations Included in above Scenario 1

11N GA SAVANNAH	BLCT	2311	LIC
12N FL JACKSONVILLE	BMLCT	20040930AKX	LIC
12N NC WINSTON-SALEM	BLCT	2283	LIC
12N TN CHATTANOOGA	BLCT	1619	LIC
13N GA MACON	BLCT	2397	LIC
12A GA ALBANY	BPCDT	20000427ABX	CP
12A GA ATHENS	BMPEDT	20020923ABE	CP
13A GA SAVANNAH	BMPEDT	20020923ABA	CP
11A GA HARTWELL & ROYSTON	USERRECORD01		APP

\*Percent new DTV interference without proposal: 23.8 BMLCT 557

\*Percent new DTV interference with proposal: 23.8 BMLCT 557

Result key: 16  
 Scenario 2 Affected station 34  
 Before Analysis

Results for: 12N GA AUGUSTA	BMLCT	557	LIC
	POPULATION	AREA (sq km)	
within Noise Limited Contour	1235063	38622.2	
not affected by terrain losses	1182590	36816.3	
lost to NTSC IX	259026	4530.6	
lost to additional IX by ATV	34902	2494.3	
lost to all IX	293928	7024.9	

Potential Interfering Stations Included in above Scenario 2

11N GA SAVANNAH	BLCT	2311	LIC
12N FL JACKSONVILLE	BMLCT	20040930AKX	LIC
12N NC WINSTON-SALEM	BLCT	2283	LIC
12N TN CHATTANOOGA	BLCT	1619	LIC
13N GA MACON	BLCT	2397	LIC
12A GA ALBANY	BPCDT	20000427ABX	CP
12A GA ATHENS	BMPEDT	20020923ABE	CP
13A GA SAVANNAH	BPRM	20010327AJC	LIC

After Analysis

Results for: 12N GA AUGUSTA	BMLCT	557	LIC
	POPULATION	AREA (sq km)	
within Noise Limited Contour	1235063	38622.2	
not affected by terrain losses	1182590	36816.3	
lost to NTSC IX	259026	4530.6	
lost to additional IX by ATV	34902	2494.3	
lost to all IX	293928	7024.9	

Potential Interfering Stations Included in above Scenario 2

11N GA SAVANNAH	BLCT	2311	LIC
12N FL JACKSONVILLE	BMLCT	20040930AKX	LIC
12N NC WINSTON-SALEM	BLCT	2283	LIC
12N TN CHATTANOOGA	BLCT	1619	LIC
13N GA MACON	BLCT	2397	LIC
12A GA ALBANY	BPCDT	20000427ABX	CP
12A GA ATHENS	BMPEDT	20020923ABE	CP
13A GA SAVANNAH	BPRM	20010327AJC	LIC
11A GA HARTWELL & ROYSTON	USERRECORD01		APP

\*Percent new DTV interference without proposal: 23.8 BMLCT 557

\*Percent new DTV interference with proposal: 23.8 BMLCT 557

Result key: 17  
 Scenario 3 Affected station 34  
 Before Analysis

Results for: 12N GA AUGUSTA	BMLCT	557	LIC
	POPULATION	AREA (sq km)	

within Noise Limited Contour	1235063	38622.2
not affected by terrain losses	1182590	36816.3
lost to NTSC IX	259026	4530.6
lost to additional IX by ATV	34902	2494.3
lost to all IX	293928	7024.9

Potential Interfering Stations Included in above Scenario 3

11N GA SAVANNAH	BLCT	2311	LIC
12N FL JACKSONVILLE	BMLCT	20040930AKX	LIC
12N NC WINSTON-SALEM	BLCT	2283	LIC
12N TN CHATTANOOGA	BLCT	1619	LIC
13N GA MACON	BLCT	2397	LIC
12A GA ALBANY	BPCDT	20000427ABX	CP
12A GA ATHENS	BPRM	20010226ABP	LIC
13A GA SAVANNAH	BMPEDT	20020923ABA	CP

After Analysis

Results for: 12N GA AUGUSTA	BMLCT	557	LIC
	POPULATION	AREA (sq km)	
within Noise Limited Contour	1235063	38622.2	
not affected by terrain losses	1182590	36816.3	
lost to NTSC IX	259026	4530.6	
lost to additional IX by ATV	34902	2494.3	
lost to all IX	293928	7024.9	

Potential Interfering Stations Included in above Scenario 3

11N GA SAVANNAH	BLCT	2311	LIC
12N FL JACKSONVILLE	BMLCT	20040930AKX	LIC
12N NC WINSTON-SALEM	BLCT	2283	LIC
12N TN CHATTANOOGA	BLCT	1619	LIC
13N GA MACON	BLCT	2397	LIC
12A GA ALBANY	BPCDT	20000427ABX	CP
12A GA ATHENS	BPRM	20010226ABP	LIC
13A GA SAVANNAH	BMPEDT	20020923ABA	CP
11A GA HARTWELL & ROYSTON	USERRECORD01	APP	
*Percent new DTV interference without proposal:	23.8	BMLCT	557
*Percent new DTV interference with proposal:	23.8	BMLCT	557

Result key: 18  
 Scenario 4 Affected station 34  
 Before Analysis

Results for: 12N GA AUGUSTA	BMLCT	557	LIC
	POPULATION	AREA (sq km)	
within Noise Limited Contour	1235063	38622.2	
not affected by terrain losses	1182590	36816.3	
lost to NTSC IX	259026	4530.6	
lost to additional IX by ATV	34902	2494.3	
lost to all IX	293928	7024.9	

Potential Interfering Stations Included in above Scenario 4

11N GA SAVANNAH	BLCT	2311	LIC
-----------------	------	------	-----



12N FL JACKSONVILLE	BMLCT	20040930AKX	LIC
12N NC WINSTON-SALEM	BLCT	2283	LIC
12N TN CHATTANOOGA	BLCT	1619	LIC
13N GA MACON	BLCT	2397	LIC
12A GA ALBANY	BPCDT	20000427ABX	CP
12A GA ATHENS	BPRM	20010226ABP	LIC
13A GA SAVANNAH	BPRM	20010327AJC	LIC

#### After Analysis

Results for: 12N GA AUGUSTA	BMLCT	557	LIC
	POPULATION	AREA (sq km)	
within Noise Limited Contour	1235063	38622.2	
not affected by terrain losses	1182590	36816.3	
lost to NTSC IX	259026	4530.6	
lost to additional IX by ATV	34902	2494.3	
lost to all IX	293928	7024.9	

Potential Interfering Stations Included in above Scenario 4

11N GA SAVANNAH	BLCT	2311	LIC
12N FL JACKSONVILLE	BMLCT	20040930AKX	LIC
12N NC WINSTON-SALEM	BLCT	2283	LIC
12N TN CHATTANOOGA	BLCT	1619	LIC
13N GA MACON	BLCT	2397	LIC
12A GA ALBANY	BPCDT	20000427ABX	CP
12A GA ATHENS	BPRM	20010226ABP	LIC
13A GA SAVANNAH	BPRM	20010327AJC	LIC
11A GA HARTWELL & ROYSTON	USERRECORD01	APP	
*Percent new DTV interference without proposal:		23.8	BMLCT 557
*Percent new DTV interference with proposal:		23.8	BMLCT 557

Result key: 19  
 Scenario 5 Affected station 34  
 Before Analysis

Results for: 12N GA AUGUSTA	BMLCT	557	LIC
	POPULATION	AREA (sq km)	
within Noise Limited Contour	1235063	38622.2	
not affected by terrain losses	1182590	36816.3	
lost to NTSC IX	259026	4530.6	
lost to additional IX by ATV	34902	2494.3	
lost to all IX	293928	7024.9	

Potential Interfering Stations Included in above Scenario 5

11N GA SAVANNAH	BLCT	2311	LIC
12N FL JACKSONVILLE	BMLCT	20040930AKX	LIC
12N NC WINSTON-SALEM	BLCT	2283	LIC
12N TN CHATTANOOGA	BLCT	1619	LIC
13N GA MACON	BLCT	2397	LIC
12A GA ALBANY	BPRM	19990625AAX	LIC
12A GA ATHENS	BMPEDT	20020923ABE	CP
13A GA SAVANNAH	BMPEDT	20020923ABA	CP

#### After Analysis

Results for: 12N GA AUGUSTA

	BMLCT	557	LIC
	POPULATION	AREA (sq km)	
within Noise Limited Contour	1235063	38622.2	
not affected by terrain losses	1182590	36816.3	
lost to NTSC IX	259026	4530.6	
lost to additional IX by ATV	34902	2494.3	
lost to all IX	293928	7024.9	

Potential Interfering Stations Included in above Scenario 5

11N GA SAVANNAH	BLCT	2311	LIC
12N FL JACKSONVILLE	BMLCT	20040930AKX	LIC
12N NC WINSTON-SALEM	BLCT	2283	LIC
12N TN CHATTANOOGA	BLCT	1619	LIC
13N GA MACON	BLCT	2397	LIC
12A GA ALBANY	BPRM	19990625AAX	LIC
12A GA ATHENS	BMPEDT	20020923ABE	CP
13A GA SAVANNAH	BMPEDT	20020923ABA	CP
11A GA HARTWELL & ROYSTON	USERRECORD01		APP
*Percent new DTV interference without proposal:		23.8	BMLCT 557
*Percent new DTV interference with proposal:		23.8	BMLCT 557

Result key: 20  
Scenario 6 Affected station 34  
Before Analysis

Results for: 12N GA AUGUSTA

	BMLCT	557	LIC
	POPULATION	AREA (sq km)	
within Noise Limited Contour	1235063	38622.2	
not affected by terrain losses	1182590	36816.3	
lost to NTSC IX	259026	4530.6	
lost to additional IX by ATV	34902	2494.3	
lost to all IX	293928	7024.9	

Potential Interfering Stations Included in above Scenario 6

11N GA SAVANNAH	BLCT	2311	LIC
12N FL JACKSONVILLE	BMLCT	20040930AKX	LIC
12N NC WINSTON-SALEM	BLCT	2283	LIC
12N TN CHATTANOOGA	BLCT	1619	LIC
13N GA MACON	BLCT	2397	LIC
12A GA ALBANY	BPRM	19990625AAX	LIC
12A GA ATHENS	BMPEDT	20020923ABE	CP
13A GA SAVANNAH	BPRM	20010327AJC	LIC

After Analysis

Results for: 12N GA AUGUSTA

	BMLCT	557	LIC
	POPULATION	AREA (sq km)	
within Noise Limited Contour	1235063	38622.2	
not affected by terrain losses	1182590	36816.3	
lost to NTSC IX	259026	4530.6	
lost to additional IX by ATV	34902	2494.3	
lost to all IX	293928	7024.9	

Potential Interfering Stations Included in above Scenario 6

11N GA SAVANNAH	BLCT	2311	LIC
12N FL JACKSONVILLE	BMLCT	20040930AKX	LIC
12N NC WINSTON-SALEM	BLCT	2283	LIC
12N TN CHATTANOOGA	BLCT	1619	LIC
13N GA MACON	BLCT	2397	LIC
12A GA ALBANY	BPRM	19990625AAX	LIC
12A GA ATHENS	BMPEDT	20020923ABE	CP
13A GA SAVANNAH	BPRM	20010327AJC	LIC
11A GA HARTWELL & ROYSTON	USERRECORD01		APP
*Percent new DTV interference without proposal:			23.8 BMLCT 557
*Percent new DTV interference with proposal:			23.8 BMLCT 557

Result key: 21  
 Scenario 7 Affected station 34  
 Before Analysis

Results for: 12N GA AUGUSTA	BMLCT	557	LIC
	POPULATION	AREA (sq km)	
within Noise Limited Contour	1235063	38622.2	
not affected by terrain losses	1182590	36816.3	
lost to NTSC IX	259026	4530.6	
lost to additional IX by ATV	34902	2494.3	
lost to all IX	293928	7024.9	

Potential Interfering Stations Included in above Scenario 7

11N GA SAVANNAH	BLCT	2311	LIC
12N FL JACKSONVILLE	BMLCT	20040930AKX	LIC
12N NC WINSTON-SALEM	BLCT	2283	LIC
12N TN CHATTANOOGA	BLCT	1619	LIC
13N GA MACON	BLCT	2397	LIC
12A GA ALBANY	BPRM	19990625AAX	LIC
12A GA ATHENS	BPRM	20010226ABP	LIC
13A GA SAVANNAH	BMPEDT	20020923ABA	CP

After Analysis

Results for: 12N GA AUGUSTA	BMLCT	557	LIC
	POPULATION	AREA (sq km)	
within Noise Limited Contour	1235063	38622.2	
not affected by terrain losses	1182590	36816.3	
lost to NTSC IX	259026	4530.6	
lost to additional IX by ATV	34902	2494.3	
lost to all IX	293928	7024.9	

Potential Interfering Stations Included in above Scenario 7

11N GA SAVANNAH	BLCT	2311	LIC
12N FL JACKSONVILLE	BMLCT	20040930AKX	LIC
12N NC WINSTON-SALEM	BLCT	2283	LIC
12N TN CHATTANOOGA	BLCT	1619	LIC
13N GA MACON	BLCT	2397	LIC
12A GA ALBANY	BPRM	19990625AAX	LIC
12A GA ATHENS	BPRM	20010226ABP	LIC

13A GA SAVANNAH	BMPEDT	20020923ABA	CP	
11A GA HARTWELL & ROYSTON	USERRECORD01		APP	
*Percent new DTV interference without proposal:		23.8	BMLCT	557
*Percent new DTV interference with proposal:		23.8	BMLCT	557

Result key: 22  
 Scenario 8 Affected station 34  
 Before Analysis

Results for: 12N GA AUGUSTA	BMLCT	557	LIC
	POPULATION	AREA (sq km)	
within Noise Limited Contour	1235063	38622.2	
not affected by terrain losses	1182590	36816.3	
lost to NTSC IX	259026	4530.6	
lost to additional IX by ATV	34902	2494.3	
lost to all IX	293928	7024.9	

Potential Interfering Stations Included in above Scenario 8

11N GA SAVANNAH	BLCT	2311	LIC
12N FL JACKSONVILLE	BMLCT	20040930AKX	LIC
12N NC WINSTON-SALEM	BLCT	2283	LIC
12N TN CHATTANOOGA	BLCT	1619	LIC
13N GA MACON	BLCT	2397	LIC
12A GA ALBANY	BPRM	19990625AAX	LIC
12A GA ATHENS	BPRM	20010226ABP	LIC
13A GA SAVANNAH	BPRM	20010327AJC	LIC

After Analysis

Results for: 12N GA AUGUSTA	BMLCT	557	LIC
	POPULATION	AREA (sq km)	
within Noise Limited Contour	1235063	38622.2	
not affected by terrain losses	1182590	36816.3	
lost to NTSC IX	259026	4530.6	
lost to additional IX by ATV	34902	2494.3	
lost to all IX	293928	7024.9	

Potential Interfering Stations Included in above Scenario 8

11N GA SAVANNAH	BLCT	2311	LIC
12N FL JACKSONVILLE	BMLCT	20040930AKX	LIC
12N NC WINSTON-SALEM	BLCT	2283	LIC
12N TN CHATTANOOGA	BLCT	1619	LIC
13N GA MACON	BLCT	2397	LIC
12A GA ALBANY	BPRM	19990625AAX	LIC
12A GA ATHENS	BPRM	20010226ABP	LIC
13A GA SAVANNAH	BPRM	20010327AJC	LIC
11A GA HARTWELL & ROYSTON	USERRECORD01		APP
*Percent new DTV interference without proposal:		23.8	BMLCT 557
*Percent new DTV interference with proposal:		23.8	BMLCT 557

#####

# Analysis of Interference to Affected Station 35

## Analysis of current record

Channel	Call	City/State	Application	Ref. No.
12	WRDW-TV	AUGUSTA GA	BPCT	-20050228AAC

## Stations Potentially Affecting This Station

Chan	Call	City/State	Dist(km)	Status	Application	Ref. No.
11	WTOC-TV	SAVANNAH GA	157.6	LIC	BLCT	-2311
12	WTLV	JACKSONVILLE FL	349.7	LIC	BMLCT	-20040930AKX
12	WFXL	ALBANY GA	298.8	CP	BPCDT	-20000427ABX
12	WFXL	ALBANY GA	298.8	LIC	BPRM	-19990625AAX
12	WGTV	ATHENS GA	217.5	CP MOD	BMPEDT	-20020923ABE
12	WGTV-TV	ATHENS GA	217.5	LIC	BPRM	-20010226ABP
12	WXII-TV	WINSTON-SALEM NC	355.8	LIC	BLCT	-2283
12	WDEF-TV	CHATTANOOGA TN	372.7	LIC	BLCT	-1619
13	WMAZ-TV	MACON GA	175.7	APP	BFRCT	-20050811ABV
13	WMAZ-TV	MACON GA	175.7	LIC	BLCT	-2397
13	WVAN-TV	SAVANNAH GA	142.0	CP MOD	BMPEDT	-20020923ABA
13	WVAN-TV	SAVANNAH GA	142.0	LIC	BPRM	-20010327AJC
11	W22AC D1	HARTWELL & ROYSTON GA	142.3	APP	USERRECORD-01	

Total scenarios = 8

Result key: 23  
Scenario 1 Affected station 35  
Before Analysis

Results for: 12N GA AUGUSTA	BPCT	20050228AAC	APP
	POPULATION	AREA (sq km)	
within Noise Limited Contour	1236527	38587.4	
not affected by terrain losses	1188296	36784.5	
lost to NTSC IX	264580	4465.9	
lost to additional IX by ATV	38062	2471.4	
lost to all IX	302642	6937.3	

Potential Interfering Stations Included in above Scenario 1

11N GA SAVANNAH	BLCT	2311	LIC
12N FL JACKSONVILLE	BMLCT	20040930AKX	LIC
12N NC WINSTON-SALEM	BLCT	2283	LIC
12N TN CHATTANOOGA	BLCT	1619	LIC
13N GA MACON	BLCT	2397	LIC
12A GA ALBANY	BPCDT	20000427ABX	CP
12A GA ATHENS	BMPEDT	20020923ABE	CP
13A GA SAVANNAH	BMPEDT	20020923ABA	CP

## After Analysis

Results for: 12N GA AUGUSTA	BPCT	20050228AAC	APP
	POPULATION	AREA (sq km)	
within Noise Limited Contour	1236527	38587.4	
not affected by terrain losses	1188296	36784.5	
lost to NTSC IX	264580	4465.9	

lost to additional IX by ATV	38062	2471.4
lost to all IX	302642	6937.3

Potential Interfering Stations Included in above Scenario 1

11N GA SAVANNAH	BLCT	2311	LIC
12N FL JACKSONVILLE	BMLCT	20040930AKX	LIC
12N NC WINSTON-SALEM	BLCT	2283	LIC
12N TN CHATTANOOGA	BLCT	1619	LIC
13N GA MACON	BLCT	2397	LIC
12A GA ALBANY	BPCDT	20000427ABX	CP
12A GA ATHENS	BMPEDT	20020923ABE	CP
13A GA SAVANNAH	BMPEDT	20020923ABA	CP
11A GA HARTWELL & ROYSTON	USERRECORD01		APP
*Percent new DTV interference without proposal:		24.5	BPCT 20050228AAC
*Percent new DTV interference with proposal:		24.5	BPCT 20050228AAC

Result key: 24  
 Scenario 2 Affected station 35  
 Before Analysis

Results for: 12N GA AUGUSTA	BPCT	20050228AAC	APP
	POPULATION	AREA (sq km)	
within Noise Limited Contour	1236527	38587.4	
not affected by terrain losses	1188296	36784.5	
lost to NTSC IX	264580	4465.9	
lost to additional IX by ATV	38062	2471.4	
lost to all IX	302642	6937.3	

Potential Interfering Stations Included in above Scenario 2

11N GA SAVANNAH	BLCT	2311	LIC
12N FL JACKSONVILLE	BMLCT	20040930AKX	LIC
12N NC WINSTON-SALEM	BLCT	2283	LIC
12N TN CHATTANOOGA	BLCT	1619	LIC
13N GA MACON	BLCT	2397	LIC
12A GA ALBANY	BPCDT	20000427ABX	CP
12A GA ATHENS	BMPEDT	20020923ABE	CP
13A GA SAVANNAH	BPRM	20010327AJC	LIC

After Analysis

Results for: 12N GA AUGUSTA	BPCT	20050228AAC	APP
	POPULATION	AREA (sq km)	
within Noise Limited Contour	1236527	38587.4	
not affected by terrain losses	1188296	36784.5	
lost to NTSC IX	264580	4465.9	
lost to additional IX by ATV	38062	2471.4	
lost to all IX	302642	6937.3	

Potential Interfering Stations Included in above Scenario 2

11N GA SAVANNAH	BLCT	2311	LIC
12N FL JACKSONVILLE	BMLCT	20040930AKX	LIC
12N NC WINSTON-SALEM	BLCT	2283	LIC
12N TN CHATTANOOGA	BLCT	1619	LIC

13N GA MACON	BLCT	2397	LIC	
12A GA ALBANY	BPCDT	20000427ABX	CP	
12A GA ATHENS	BMPEDT	20020923ABE	CP	
13A GA SAVANNAH	BPRM	20010327AJC	LIC	
11A GA HARTWELL & ROYSTON	USERRECORD01		APP	
*Percent new DTV interference without proposal:		24.5	BPCT	20050228AAC
*Percent new DTV interference with proposal:		24.5	BPCT	20050228AAC

Result key: 25  
Scenario 3 Affected station 35  
Before Analysis

Results for: 12N GA AUGUSTA	BPCT	20050228AAC	APP
	POPULATION	AREA (sq km)	
within Noise Limited Contour	1236527	38587.4	
not affected by terrain losses	1188296	36784.5	
lost to NTSC IX	264580	4465.9	
lost to additional IX by ATV	38062	2471.4	
lost to all IX	302642	6937.3	

Potential Interfering Stations Included in above Scenario 3

11N GA SAVANNAH	BLCT	2311	LIC
12N FL JACKSONVILLE	BMLCT	20040930AKX	LIC
12N NC WINSTON-SALEM	BLCT	2283	LIC
12N TN CHATTANOOGA	BLCT	1619	LIC
13N GA MACON	BLCT	2397	LIC
12A GA ALBANY	BPCDT	20000427ABX	CP
12A GA ATHENS	BPRM	20010226ABP	LIC
13A GA SAVANNAH	BMPEDT	20020923ABA	CP

After Analysis

Results for: 12N GA AUGUSTA	BPCT	20050228AAC	APP
	POPULATION	AREA (sq km)	
within Noise Limited Contour	1236527	38587.4	
not affected by terrain losses	1188296	36784.5	
lost to NTSC IX	264580	4465.9	
lost to additional IX by ATV	38062	2471.4	
lost to all IX	302642	6937.3	

Potential Interfering Stations Included in above Scenario 3

11N GA SAVANNAH	BLCT	2311	LIC
12N FL JACKSONVILLE	BMLCT	20040930AKX	LIC
12N NC WINSTON-SALEM	BLCT	2283	LIC
12N TN CHATTANOOGA	BLCT	1619	LIC
13N GA MACON	BLCT	2397	LIC
12A GA ALBANY	BPCDT	20000427ABX	CP
12A GA ATHENS	BPRM	20010226ABP	LIC
13A GA SAVANNAH	BMPEDT	20020923ABA	CP
11A GA HARTWELL & ROYSTON	USERRECORD01		APP
*Percent new DTV interference without proposal:		24.5	BPCT
*Percent new DTV interference with proposal:		24.5	BPCT

Result key: 26  
 Scenario 4 Affected station 35  
 Before Analysis

Results for: 12N GA AUGUSTA	BPCT	20050228AAC	APP
	POPULATION	AREA (sq km)	
within Noise Limited Contour	1236527	38587.4	
not affected by terrain losses	1188296	36784.5	
lost to NTSC IX	264580	4465.9	
lost to additional IX by ATV	38062	2471.4	
lost to all IX	302642	6937.3	

Potential Interfering Stations Included in above Scenario 4

11N GA SAVANNAH	BLCT	2311	LIC
12N FL JACKSONVILLE	BMLCT	20040930AKX	LIC
12N NC WINSTON-SALEM	BLCT	2283	LIC
12N TN CHATTANOOGA	BLCT	1619	LIC
13N GA MACON	BLCT	2397	LIC
12A GA ALBANY	BPCDT	20000427ABX	CP
12A GA ATHENS	BPRM	20010226ABP	LIC
13A GA SAVANNAH	BPRM	20010327AJC	LIC

After Analysis

Results for: 12N GA AUGUSTA	BPCT	20050228AAC	APP
	POPULATION	AREA (sq km)	
within Noise Limited Contour	1236527	38587.4	
not affected by terrain losses	1188296	36784.5	
lost to NTSC IX	264580	4465.9	
lost to additional IX by ATV	38062	2471.4	
lost to all IX	302642	6937.3	

Potential Interfering Stations Included in above Scenario 4

11N GA SAVANNAH	BLCT	2311	LIC
12N FL JACKSONVILLE	BMLCT	20040930AKX	LIC
12N NC WINSTON-SALEM	BLCT	2283	LIC
12N TN CHATTANOOGA	BLCT	1619	LIC
13N GA MACON	BLCT	2397	LIC
12A GA ALBANY	BPCDT	20000427ABX	CP
12A GA ATHENS	BPRM	20010226ABP	LIC
13A GA SAVANNAH	BPRM	20010327AJC	LIC
11A GA HARTWELL & ROYSTON	USERRECORD01		APP
*Percent new DTV interference without proposal:		24.5	BPCT 20050228AAC
*Percent new DTV interference with proposal:		24.5	BPCT 20050228AAC

Result key: 27  
 Scenario 5 Affected station 35  
 Before Analysis

Results for: 12N GA AUGUSTA	BPCT	20050228AAC	APP
	POPULATION	AREA (sq km)	
within Noise Limited Contour	1236527	38587.4	
not affected by terrain losses	1188296	36784.5	
lost to NTSC IX	264580	4465.9	



lost to additional IX by ATV	38062	2471.4
lost to all IX	302642	6937.3

Potential Interfering Stations Included in above Scenario 5

11N GA SAVANNAH	BLCT	2311	LIC
12N FL JACKSONVILLE	BMLCT	20040930AKX	LIC
12N NC WINSTON-SALEM	BLCT	2283	LIC
12N TN CHATTANOOGA	BLCT	1619	LIC
13N GA MACON	BLCT	2397	LIC
12A GA ALBANY	BPRM	19990625AAX	LIC
12A GA ATHENS	BMPEDT	20020923ABE	CP
13A GA SAVANNAH	BMPEDT	20020923ABA	CP

After Analysis

Results for: 12N GA AUGUSTA	BPCT	20050228AAC	APP
	POPULATION	AREA (sq km)	
within Noise Limited Contour	1236527	38587.4	
not affected by terrain losses	1188296	36784.5	
lost to NTSC IX	264580	4465.9	
lost to additional IX by ATV	38062	2471.4	
lost to all IX	302642	6937.3	

Potential Interfering Stations Included in above Scenario 5

11N GA SAVANNAH	BLCT	2311	LIC
12N FL JACKSONVILLE	BMLCT	20040930AKX	LIC
12N NC WINSTON-SALEM	BLCT	2283	LIC
12N TN CHATTANOOGA	BLCT	1619	LIC
13N GA MACON	BLCT	2397	LIC
12A GA ALBANY	BPRM	19990625AAX	LIC
12A GA ATHENS	BMPEDT	20020923ABE	CP
13A GA SAVANNAH	BMPEDT	20020923ABA	CP
11A GA HARTWELL & ROYSTON	USERRECORD01		APP
*Percent new DTV interference without proposal:		24.5	BPCT 20050228AAC
*Percent new DTV interference with proposal:		24.5	BPCT 20050228AAC

Result key: 28  
Scenario 6 Affected station 35  
Before Analysis

Results for: 12N GA AUGUSTA	BPCT	20050228AAC	APP
	POPULATION	AREA (sq km)	
within Noise Limited Contour	1236527	38587.4	
not affected by terrain losses	1188296	36784.5	
lost to NTSC IX	264580	4465.9	
lost to additional IX by ATV	38062	2471.4	
lost to all IX	302642	6937.3	

Potential Interfering Stations Included in above Scenario 6

11N GA SAVANNAH	BLCT	2311	LIC
12N FL JACKSONVILLE	BMLCT	20040930AKX	LIC
12N NC WINSTON-SALEM	BLCT	2283	LIC
12N TN CHATTANOOGA	BLCT	1619	LIC

13N GA MACON	BLCT	2397	LIC
12A GA ALBANY	BPRM	19990625AAX	LIC
12A GA ATHENS	BMPEDT	20020923ABE	CP
13A GA SAVANNAH	BPRM	20010327AJC	LIC

#### After Analysis

Results for: 12N GA AUGUSTA	BPCT	20050228AAC	APP
	POPULATION	AREA (sq km)	
within Noise Limited Contour	1236527	38587.4	
not affected by terrain losses	1188296	36784.5	
lost to NTSC IX	264580	4465.9	
lost to additional IX by ATV	38062	2471.4	
lost to all IX	302642	6937.3	

Potential Interfering Stations Included in above Scenario 6

11N GA SAVANNAH	BLCT	2311	LIC
12N FL JACKSONVILLE	BMLCT	20040930AKX	LIC
12N NC WINSTON-SALEM	BLCT	2283	LIC
12N TN CHATTANOOGA	BLCT	1619	LIC
13N GA MACON	BLCT	2397	LIC
12A GA ALBANY	BPRM	19990625AAX	LIC
12A GA ATHENS	BMPEDT	20020923ABE	CP
13A GA SAVANNAH	BPRM	20010327AJC	LIC
11A GA HARTWELL & ROYSTON	USERRECORD01		APP
*Percent new DTV interference without proposal:		24.5	BPCT 20050228AAC
*Percent new DTV interference with proposal:		24.5	BPCT 20050228AAC

Result key: 29  
 Scenario 7 Affected station 35  
 Before Analysis

Results for: 12N GA AUGUSTA	BPCT	20050228AAC	APP
	POPULATION	AREA (sq km)	
within Noise Limited Contour	1236527	38587.4	
not affected by terrain losses	1188296	36784.5	
lost to NTSC IX	264580	4465.9	
lost to additional IX by ATV	38062	2471.4	
lost to all IX	302642	6937.3	

Potential Interfering Stations Included in above Scenario 7

11N GA SAVANNAH	BLCT	2311	LIC
12N FL JACKSONVILLE	BMLCT	20040930AKX	LIC
12N NC WINSTON-SALEM	BLCT	2283	LIC
12N TN CHATTANOOGA	BLCT	1619	LIC
13N GA MACON	BLCT	2397	LIC
12A GA ALBANY	BPRM	19990625AAX	LIC
12A GA ATHENS	BPRM	20010226ABP	LIC
13A GA SAVANNAH	BMPEDT	20020923ABA	CP

#### After Analysis

Results for: 12N GA AUGUSTA	BPCT	20050228AAC	APP
	POPULATION	AREA (sq km)	

within Noise Limited Contour	1236527	38587.4
not affected by terrain losses	1188296	36784.5
lost to NTSC IX	264580	4465.9
lost to additional IX by ATV	38062	2471.4
lost to all IX	302642	6937.3

Potential Interfering Stations Included in above Scenario 7

11N GA SAVANNAH	BLCT	2311	LIC
12N FL JACKSONVILLE	BMLCT	20040930AKX	LIC
12N NC WINSTON-SALEM	BLCT	2283	LIC
12N TN CHATTANOOGA	BLCT	1619	LIC
13N GA MACON	BLCT	2397	LIC
12A GA ALBANY	BPRM	19990625AAX	LIC
12A GA ATHENS	BPRM	20010226ABP	LIC
13A GA SAVANNAH	BMPEDT	20020923ABA	CP
11A GA HARTWELL & ROYSTON	USERRECORD01		APP
*Percent new DTV interference without proposal:		24.5	BPCT 20050228AAC
*Percent new DTV interference with proposal:		24.5	BPCT 20050228AAC

Result key: 30  
 Scenario 8 Affected station 35  
 Before Analysis

Results for: 12N GA AUGUSTA BPCT 20050228AAC APP

	POPULATION	AREA (sq km)
within Noise Limited Contour	1236527	38587.4
not affected by terrain losses	1188296	36784.5
lost to NTSC IX	264580	4465.9
lost to additional IX by ATV	38062	2471.4
lost to all IX	302642	6937.3

Potential Interfering Stations Included in above Scenario 8

11N GA SAVANNAH	BLCT	2311	LIC
12N FL JACKSONVILLE	BMLCT	20040930AKX	LIC
12N NC WINSTON-SALEM	BLCT	2283	LIC
12N TN CHATTANOOGA	BLCT	1619	LIC
13N GA MACON	BLCT	2397	LIC
12A GA ALBANY	BPRM	19990625AAX	LIC
12A GA ATHENS	BPRM	20010226ABP	LIC
13A GA SAVANNAH	BPRM	20010327AJC	LIC

After Analysis

Results for: 12N GA AUGUSTA BPCT 20050228AAC APP

	POPULATION	AREA (sq km)
within Noise Limited Contour	1236527	38587.4
not affected by terrain losses	1188296	36784.5
lost to NTSC IX	264580	4465.9
lost to additional IX by ATV	38062	2471.4
lost to all IX	302642	6937.3

Potential Interfering Stations Included in above Scenario 8

11N GA SAVANNAH	BLCT	2311	LIC
-----------------	------	------	-----

12N FL JACKSONVILLE	BMLCT	20040930AKX	LIC	
12N NC WINSTON-SALEM	BLCT	2283	LIC	
12N TN CHATTANOOGA	BLCT	1619	LIC	
13N GA MACON	BLCT	2397	LIC	
12A GA ALBANY	BPRM	19990625AAX	LIC	
12A GA ATHENS	BPRM	20010226ABP	LIC	
13A GA SAVANNAH	BPRM	20010327AJC	LIC	
11A GA HARTWELL & ROYSTON	USERRECORD01		APP	
*Percent new DTV interference without proposal:			24.5	BPCT 20050228AAC
*Percent new DTV interference with proposal:			24.5	BPCT 20050228AAC

#####

# Analysis of Interference to Affected Station 36

## Analysis of current record

Channel	Call	City/State	Application	Ref. No.
12	W12AQ	BLACK MOUNTAIN NC	BLTTV	-1804

## Stations Potentially Affecting This Station

Chan	Call	City/State	Dist(km)	Status	Application	Ref. No.
11	W11AX	BAT CAVE, ETC. NC	22.5	LIC	BLTTV	-19800501IB
11	WJHL-TV	JOHNSON CITY TN	92.2	LIC	BLCT	-2111
12	WGTV	ATHENS GA	260.3	CP MOD	BMPEDT	-20020923ABE
12	WGTV-TV	ATHENS GA	260.3	LIC	BPRM	-20010226ABP
12	WRDW-TV	AUGUSTA GA	250.0	LIC	BMLCT	-557
12	WRDW-TV	AUGUSTA GA	249.8	APP	BPCT	-20050228AAC
12	WYMT-DT	HAZARD KY	190.4	PLN	DTVPLN	-DTVP0101
12	WYMT-TV	HAZARD KY	190.4	LIC	BLCDT	-20040109ACY
12	W12AU	BURNSVILLE NC	35.6	LIC	BLTTV	-1997
12	W12CI	HOT SPRINGS NC	53.9	LIC	BLTTV	-19901224JI
12	W12AR	WAYNESVILLE, ETC. NC	64.4	LIC	BLTTV	-4877
12	WXII-TV	WINSTON-SALEM NC	196.0	LIC	BLCT	-2283
12	WDEF-TV	CHATTANOOGA TN	275.4	LIC	BLCT	-1619
12	NEW	BLUEFIELD WV	217.5	APP	BNPTVL	-20000829AEV
13	WLOS	ASHEVILLE NC	43.2	APP	BFRCT	-20050812AAI
13	WLOS	ASHEVILLE NC	43.2	LIC	BLCT	-2599
11	W22AC D1	HARTWELL & ROYSTON GA	155.0	APP	USERRECORD-01	

Proposed station is beyond the site to  
nearest cell evaluation distance

#####

# Analysis of Interference to Affected Station 37

## Analysis of current record

Channel	Call	City/State	Application	Ref. No.
12	W12AU	BURNSVILLE NC	BLTTV	-1997

## Stations Potentially Affecting This Station

Chan	Call	City/State	Dist(km)	Status	Application	Ref. No.
11	WJHL-TV	JOHNSON CITY TN	56.8	LIC	BLCT	-2111
12	WGTV	ATHENS GA	290.8	CP MOD	BMPEDT	-20020923ABE
12	WGTV-TV	ATHENS GA	290.8	LIC	BPRM	-20010226ABP
12	WRDW-TV	AUGUSTA GA	284.2	LIC	BMLCT	-557
12	WRDW-TV	AUGUSTA GA	284.0	APP	BPCT	-20050228AAC
12	WYMT-DT	HAZARD KY	160.4	PLN	DTVPLN	-DTVP0101
12	WYMT-TV	HAZARD KY	160.4	LIC	BLCDT	-20040109ACY
12	W12AQ	BLACK MOUNTAIN NC	35.6	LIC	BLTTV	-1804
12	W12CI	HOT SPRINGS NC	45.8	LIC	BLTTV	-19901224JI
12	W12AR	WAYNESVILLE, ETC. NC	83.5	LIC	BLTTV	-4877
12	WXII-TV	WINSTON-SALEM NC	179.3	LIC	BLCT	-2283
12	WDEF-TV	CHATTANOOGA TN	287.9	LIC	BLCT	-1619
12	NEW	BLUEFIELD WV	183.9	APP	BNPTVL	-20000829AEV
13	WLOS	ASHEVILLE NC	70.5	APP	BFRCT	-20050812AAI
13	WLOS	ASHEVILLE NC	70.5	LIC	BLCT	-2599
11	W22AC D1	HARTWELL & ROYSTON GA	189.8	APP	USERRECORD-01	

Proposed station is beyond the site to  
nearest cell evaluation distance

#####

#### Analysis of Interference to Affected Station 38

##### Analysis of current record

Channel	Call	City/State	Application	Ref. No.
12	W12CI	HOT SPRINGS NC	BLTTV	-19901224JI

##### Stations Potentially Affecting This Station

Chan	Call	City/State	Dist(km)	Status	Application	Ref. No.
11	W11AU	CANTON, ETC. NC	40.0	LIC	BLTTV	-19830425IF
11	WJHL-TV	JOHNSON CITY TN	82.2	LIC	BLCT	-2111
12	WGTV	ATHENS GA	265.5	CP MOD	BMPEDT	-20020923ABE
12	WGTV-TV	ATHENS GA	265.5	LIC	BPRM	-20010226ABP
12	WRDW-TV	AUGUSTA GA	293.4	LIC	BMLCT	-557
12	WRDW-TV	AUGUSTA GA	293.2	APP	BPCT	-20050228AAC
12	WYMT-DT	HAZARD KY	144.8	PLN	DTVPLN	-DTVP0101
12	WYMT-TV	HAZARD KY	144.8	LIC	BLCDT	-20040109ACY
12	W12AQ	BLACK MOUNTAIN NC	53.9	LIC	BLTTV	-1804
12	W12AU	BURNSVILLE NC	45.8	LIC	BLTTV	-1997
12	W12AR	WAYNESVILLE, ETC. NC	53.3	LIC	BLTTV	-4877
12	WXII-TV	WINSTON-SALEM NC	223.9	LIC	BLCT	-2283
12	WKRC-TV	CINCINNATI OH	384.8	LIC	BMLCT	-19860814KF
12	WDEF-TV	CHATTANOOGA TN	244.1	LIC	BLCT	-1619
12	WFEM-LP	HEISKELL, ETC. TN	110.5	LIC	BLTVL	-19910624JI
12	NEW	BLUEFIELD WV	210.2	APP	BNPTVL	-20000829AEV
13	WLOS	ASHEVILLE NC	55.9	APP	BFRCT	-20050812AAI
13	WLOS	ASHEVILLE NC	55.9	LIC	BLCT	-2599
11	W22AC D1	HARTWELL & ROYSTON GA	179.8	APP	USERRECORD-01	

Proposed station is beyond the site to  
nearest cell evaluation distance

#####

Analysis of Interference to Affected Station 39

Analysis of current record

Channel	Call	City/State	Application	Ref. No.
12	W12AR	WAYNESVILLE, ETC. NC	BLTTV	-4877

Stations Potentially Affecting This Station

Chan	Call	City/State	Dist(km)	Status	Application	Ref. No.
11	W11AN	BRYSON CITY, ETC. NC	36.2	LIC	BLTTV	-4960
11	W11AU	CANTON, ETC. NC	15.4	LIC	BLTTV	-19830425IF
11	WJHL-TV	JOHNSON CITY TN	132.7	LIC	BLCT	-2111
12	WGTW	ATHENS GA	212.5	CP MOD	BMPEDT	-20020923ABE
12	WGTW-TV	ATHENS GA	212.5	LIC	BPRM	-20010226ABP
12	WRDW-TV	AUGUSTA GA	255.5	LIC	BMLCT	-557
12	WRDW-TV	AUGUSTA GA	255.3	APP	BPCT	-20050228AAC
12	WYMT-DT	HAZARD KY	190.3	PLN	DTVPLN	-DTVP0101
12	WYMT-TV	HAZARD KY	190.3	LIC	BLCDT	-20040109ACY
12	W12AQ	BLACK MOUNTAIN NC	64.4	LIC	BLTTV	-1804
12	W12AU	BURNSVILLE NC	83.5	LIC	BLTTV	-1997
12	W12CI	HOT SPRINGS NC	53.3	LIC	BLTTV	-19901224JI
12	WXII-TV	WINSTON-SALEM NC	259.2	LIC	BLCT	-2283
12	WDEF-TV	CHATTANOOGA TN	211.1	LIC	BLCT	-1619
12	WFEM-LP	HEISKELL, ETC. TN	110.2	LIC	BLTVL	-19910624JI
13	WLOS	ASHEVILLE NC	26.1	APP	BFRCTT	-20050812AAI
13	WLOS	ASHEVILLE NC	26.1	LIC	BLCT	-2599
11	W22AC D1	HARTWELL & ROYSTON GA	130.7	APP	USERRECORD-01	

Proposed station is beyond the site to  
nearest cell evaluation distance

#####

Analysis of Interference to Affected Station 40

Analysis of current record

Channel	Call	City/State	Application	Ref. No.
12	WFEM-LP	HEISKELL, ETC. TN	BLTVL	-19910624JI

Stations Potentially Affecting This Station

Chan	Call	City/State	Dist(km)	Status	Application	Ref. No.
12	WGTW	ATHENS GA	252.3	CP MOD	BMPEDT	-20020923ABE
12	WGTW-TV	ATHENS GA	252.3	LIC	BPRM	-20010226ABP
12	WRDW-TV	AUGUSTA GA	356.8	LIC	BMLCT	-557
12	WRDW-TV	AUGUSTA GA	356.6	APP	BPCT	-20050228AAC
12	WNIN	EVANSVILLE IN	358.0	LIC	BMLEDT	-20041112ABH
12	WNIN	EVANSVILLE IN	367.2	LIC	BPRM	-20000328AAW
12	WYMT-DT	HAZARD KY	145.5	PLN	DTVPLN	-DTVP0101
12	WYMT-TV	HAZARD KY	145.5	LIC	BLCDT	-20040109ACY

12	W12AU	BURNSVILLE NC	155.8	LIC	BLTTV	-1997
12	W12CI	HOT SPRINGS NC	110.5	LIC	BLTTV	-19901224JI
12	W12AR	WAYNESVILLE, ETC. NC	110.2	LIC	BLTTV	-4877
12	WXII-TV	WINSTON-SALEM NC	328.8	LIC	BLCT	-2283
12	WKRC-TV	CINCINNATI OH	341.0	LIC	BMLCT	-19860814KF
12	WDEF-TV	CHATTANOOGA TN	157.2	LIC	BLCT	-1619
11	W22AC D1	HARTWELL & ROYSTON GA	219.0	APP	USERRECORD-01	

Proposed station is beyond the site to  
nearest cell evaluation distance

#####

#### Analysis of Interference to Affected Station 41

#### Analysis of current record

Channel	Call	City/State	Application Ref. No.
11	W22AC D1	HARTWELL & ROYSTON GA	USERRECORD-01

#### Stations Potentially Affecting This Station

Chan	Call	City/State	Dist(km)	Status	Application Ref. No.
11	WXIA-TV	ATLANTA GA	142.5	LIC	BMLCT -19960208KF
11	WTOC-TV	SAVANNAH GA	291.2	LIC	BLCT -2311
11	W11AX	BAT CAVE, ETC. NC	139.0	LIC	BLTTV -19800501IB
11	W11AN	BRYSON CITY, ETC. NC	126.5	LIC	BLTTV -4960
11	W11AU	CANTON, ETC. NC	140.5	LIC	BLTTV -19830425IF
11	WTVI	CHARLOTTE NC	231.5	LIC	BMLEDT -20030428AAT
11	WTVI-DR	CHARLOTTE NC	231.5	LIC	BPRM -20000411AAG
11	W11AJ	FRANKLIN NC	112.0	LIC	BLTTV -19811211IC
11	W11AQ	ROBBINSVILLE, ETC. NC	131.1	LIC	BLTTV -19821008IB
11	WJHL-TV	JOHNSON CITY TN	246.5	LIC	BLCT -2111
12	WGTV	ATHENS GA	124.6	CP MOD	BMPEDT -20020923ABE
12	WGTV-TV	ATHENS GA	124.6	LIC	BPRM -20010226ABP

Total scenarios = 1

Result key: 31  
Scenario 1 Affected station 41  
Before Analysis

Results for: 11A GA HARTWELL & ROYSTON USERRECORD01 APP  
HAAT 153.0 m, ATV ERP 0.2 kW

	POPULATION	AREA (sq km)
within Noise Limited Contour	70982	2233.0
not affected by terrain losses	70982	2233.0
lost to NTSC IX	48	1.0
lost to additional IX by ATV	0	0.0
lost to ATV IX only	0	0.0
lost to all IX	48	1.0

Potential Interfering Stations Included in above Scenario 1

11N GA ATLANTA	BMLCT	19960208KF	LIC
----------------	-------	------------	-----

\*Percent Service lost without proposal: 0.0 to USERRECORD01  
\*Percent Service lost with proposal: 0.0 to USERRECORD01

#####

FINISHED FINISHED FINISHED FINISHED FINISHED FINISHED