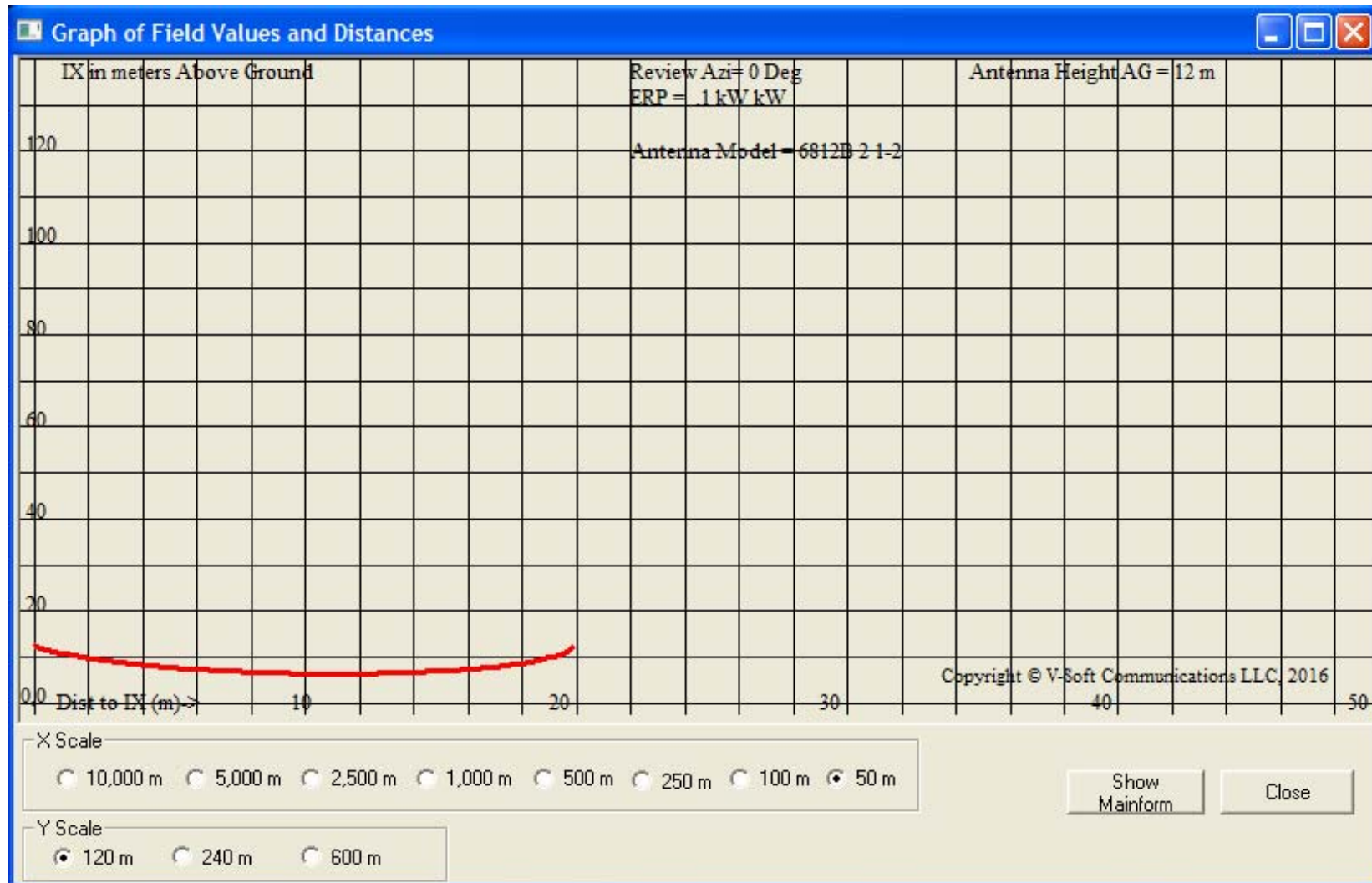


Interference Exhibit for KFIP-LP

The instant application seeks a waiver of the second adjacent minimum distance separation requirement of 47 C.F.R. Section 73.807. The proposed facility will not interfere with any authorized radio service, specifically, KWYI's pending application.

Below is a graphic and tabular output showing that the interfering 130.8 dB F(50,10) contour of the proposed facility, with respect to KWYI, does not reach ground level. There are no tall buildings within this contour.



KFIP-LP.A Kailua, HI
 74.1204(d) Showing
 LPFM Maximum Licensed ERP = 0.1
 LPFM Antenna Height AG = 12 Meters
 KFIP-LP.A Antenna Model = 6812B 2 1-2
 HAAT = -201.3m
 Terrain = NED 03 Sec

Protected Station's Contour = 90.78596 dBu
 LPFM's full Interference contour 130.78596

Review Azimuth = 0 Degrees True
 Relative Field on the horizon at Review Azimuth = 1.000
 LPFM ERP on the horizon at Review Azimuth = 0.1 kW
 Distance between stations = 11.7 km
 Protected Station= KWYI.A, 4.5 kW, 1700 M Meters COR AMSL

Depression Angle From Horizon(Deg)	Vertical Relative Field	Horizontal Relative Field	ERP (kw) Contour Dep.	Dist to IX Along Angle(m)	Dist to IX Contour From Tower Base(m)	Height IX Above Ground (m)
00.00	1.0	1.0	0.1000	020.2629	020.2629	012.000
01.00	0.999	1.0	0.0998	020.2427	020.2396	011.647
02.00	0.998	1.0	0.0996	020.2224	020.2101	011.294
03.00	0.995	1.0	0.0990	020.1616	020.1340	010.945
04.00	0.995	1.0	0.0990	020.1616	020.1125	010.594
05.00	0.987	1.0	0.0974	019.9995	019.9234	010.257
06.00	0.981	1.0	0.0962	019.8779	019.7690	009.922
07.00	0.975	1.0	0.0951	019.7563	019.6091	009.592
08.00	0.967	1.0	0.0935	019.5942	019.4036	009.273
09.00	0.958	1.0	0.0918	019.4119	019.1729	008.963
10.00	0.949	1.0	0.0901	019.2295	018.9374	008.661
11.00	0.938	1.0	0.0880	019.0066	018.6574	008.373
12.00	0.927	1.0	0.0859	018.7837	018.3733	008.095
13.00	0.915	1.0	0.0837	018.5406	018.0654	007.829
14.00	0.902	1.0	0.0814	018.2772	017.7342	007.578
15.00	0.888	1.0	0.0789	017.9935	017.3804	007.343
16.00	0.874	1.0	0.0764	017.7098	017.0237	007.119

17.00	0.858	1.0	0.0736	017.3856	016.6259	006.917
18.00	0.843	1.0	0.0711	017.0816	016.2456	006.721
19.00	0.826	1.0	0.0682	016.7372	015.8253	006.551
20.00	0.809	1.0	0.0654	016.3927	015.4041	006.393
21.00	0.791	1.0	0.0626	016.0280	014.9634	006.256
22.00	0.773	1.0	0.0598	015.6632	014.5227	006.132
23.00	0.754	1.0	0.0569	015.2782	014.0637	006.030
24.00	0.735	1.0	0.0540	014.8932	013.6057	005.942
25.00	0.716	1.0	0.0513	014.5083	013.1489	005.869
26.00	0.696	1.0	0.0484	014.1030	012.6757	005.818
27.00	0.676	1.0	0.0457	013.6977	012.2048	005.781
28.00	0.656	1.0	0.0430	013.2925	011.7366	005.760
29.00	0.636	1.0	0.0404	012.8872	011.2714	005.752
30.00	0.615	1.0	0.0378	012.4617	010.7921	005.769
31.00	0.594	1.0	0.0353	012.0362	010.3170	005.801
32.00	0.574	1.0	0.0329	011.6309	009.8636	005.837
33.00	0.553	1.0	0.0306	011.2054	009.3976	005.897
34.00	0.532	1.0	0.0283	010.7799	008.9369	005.972
35.00	0.512	1.0	0.0262	010.3746	008.4984	006.049
36.00	0.491	1.0	0.0241	009.9491	008.0490	006.152
37.00	0.471	1.0	0.0222	009.5438	007.6220	006.256
38.00	0.451	1.0	0.0203	009.1386	007.2013	006.374
39.00	0.431	1.0	0.0186	008.7333	006.7871	006.504
40.00	0.411	1.0	0.0169	008.3281	006.3797	006.647
41.00	0.391	1.0	0.0153	007.9228	005.9794	006.802
42.00	0.372	1.0	0.0138	007.5378	005.6017	006.956
43.00	0.353	1.0	0.0125	007.1528	005.2312	007.122
44.00	0.335	1.0	0.0112	006.7881	004.8829	007.285
45.00	0.317	1.0	0.0100	006.4233	004.5420	007.458
46.00	0.3	1.0	0.0090	006.0789	004.2227	007.627
47.00	0.282	1.0	0.0080	005.7141	003.8970	007.821
48.00	0.266	1.0	0.0071	005.3899	003.6066	007.994
49.00	0.249	1.0	0.0062	005.0455	003.3101	008.192
50.00	0.234	1.0	0.0055	004.7415	003.0478	008.368
51.00	0.219	1.0	0.0048	004.4376	002.7927	008.551
52.00	0.204	1.0	0.0042	004.1336	002.5449	008.743
53.00	0.19	1.0	0.0036	003.8500	002.3170	008.925
54.00	0.176	1.0	0.0031	003.5663	002.0962	009.115
55.00	0.163	1.0	0.0027	003.3029	001.8944	009.294

56.00	0.151	1.0	0.0023	003.0597	001.7110	009.463
57.00	0.139	1.0	0.0019	002.8165	001.5340	009.638
58.00	0.127	1.0	0.0016	002.5734	001.3637	009.818
59.00	0.116	1.0	0.0013	002.3505	001.2106	009.985
60.00	0.106	1.0	0.0011	002.1479	001.0739	010.140
61.00	0.096	1.0	0.0009	001.9452	000.9431	010.299
62.00	0.087	1.0	0.0008	001.7629	000.8276	010.443
63.00	0.079	1.0	0.0006	001.6008	000.7267	010.574
64.00	0.071	1.0	0.0005	001.4387	000.6307	010.707
65.00	0.063	1.0	0.0004	001.2766	000.5395	010.843
66.00	0.056	1.0	0.0003	001.1347	000.4615	010.963
67.00	0.05	1.0	0.0003	001.0131	000.3959	011.067
68.00	0.043	1.0	0.0002	000.8713	000.3264	011.192
69.00	0.038	1.0	0.0001	000.7700	000.2759	011.281
70.00	0.033	1.0	0.0001	000.6687	000.2287	011.372
71.00	0.028	1.0	0.0001	000.5674	000.1847	011.464
72.00	0.024	1.0	0.0001	000.4863	000.1503	011.537
73.00	0.02	1.0	0.0000	000.4053	000.1185	011.612
74.00	0.017	1.0	0.0000	000.3445	000.0949	011.669
75.00	0.014	1.0	0.0000	000.2837	000.0734	011.726
76.00	0.011	1.0	0.0000	000.2229	000.0539	011.784
77.00	0.009	1.0	0.0000	000.1824	000.0410	011.822
78.00	0.007	1.0	0.0000	000.1418	000.0295	011.861
79.00	0.005	1.0	0.0000	000.1013	000.0193	011.901
80.00	0.004	1.0	0.0000	000.0811	000.0141	011.920
81.00	0.003	1.0	0.0000	000.0608	000.0095	011.940
82.00	0.002	1.0	0.0000	000.0405	000.0056	011.960
83.00	0.001	1.0	0.0000	000.0203	000.0025	011.980
84.00	0.001	1.0	0.0000	000.0203	000.0021	011.980
85.00	0.0	1.0	0.0000	000.0020	000.0002	011.998
86.00	0.0	1.0	0.0000	000.0020	000.0001	011.998
87.00	0.0	1.0	0.0000	000.0020	000.0001	011.998
88.00	0.0	1.0	0.0000	000.0020	000.0001	011.998
89.00	0.0	1.0	0.0000	000.0020	000.0000	011.998
90.00	0.0	1.0	0.0000	000.0020	000.0000	011.998