

Technical Report W283AR.CP Minor Modification

This technical report is submitted for a minor modification to W283AR.CP, FCC file no. BPFT-20160129AGN. A change in the antenna COR AGL is submitted. The translator will continue to serve as a fill-in facility to rebroadcast WZGV(AM) 730 kHz at Cramerton, NC, FCC facility I.D. 26179.

W283AR.CP Modification Analysis:

An overlap study (exhibit E-1) shows the W283AR.CP modification to channel 248 is within the second-adjacent WPEG(FM) 250C and third-adjacent WKKT(FM) 245C 60 dBu protected contours. The +40 dBu F(50-10) contour within the protected contours is calculated to be 128.3 dBu and 124.5 dBu, respectively (exhibits E-2 and E-3) and do not encompass any population, roads or buildings, as shown in the aerial photo in exhibit E-4. The 60 dBu overlaps the current 60 dBu contour (exhibit E-5) and is contained within the primary WZGV(AM) 2.0 mV/m daytime contour (exhibit E-6).

Antenna System:

The W283AR.CP modification is located on an existing tower, ASR #1002305, at coordinates:

35 16 05N 80 54 11W NAD 27.

A PSI FML single bay, directional antenna (exhibit E-7) will be mounted at a COR AGL of 60 meters, 294 meters AMSL and operate at 0.250 kW ERP.

RF Exposure Calculation:

The RF contribution was calculated using the formula from the OET Bulletin 65:

$$S \text{ (RF in microwatts/cm}^2\text{)} = \frac{33.4 \times F^2 \times (H \text{ ERP} + V \text{ ERP in watts})}{R^2 \text{ (height of radiation center in meters -2m)}}$$

Using a worst case vertical (F) factor of 1.0, the RF is calculated to be $4.96 \mu\text{W}/\text{cm}^2$ to the ground, which is below 5% of the $200 \mu\text{W}/\text{cm}^2$ maximum permissible for uncontrolled/general public exposure, allowing exclusion from consideration.

Conclusion:

It is concluded that the W283AR.CP modification complies with all Commission rules and policies.

A handwritten signature in black ink, appearing to read 'Christopher Anderson', is written over a horizontal line.

Christopher Anderson January 12, 2017
andersce@bham.rr.com
© 2017 Anderson Associates

E-1 W283AR.CP 248D Mod. Overlap Study

REFERENCE 35 16 05.0 N. 80 54 11.0 W.		CH# 248D - 97.5 MHz, Pwr= 0.25 kW DA, HAAT= 85.0 M, COR= 294 M Average Protected F(50-50)= 11.9 km Standard Directional								DISPLAY DATES DATA 01-11-17 SEARCH 01-11-17	
CH CITY	CALL	TYPE STATE	ANT	AZI <--	DIST FILE #	LAT LNG	PWR(kW) HAAT(M)	INT(km) COR(M)	PRO(km) LICENSEE	*IN* (Overlap in km)	*OUT*
250C Concord	WPEG	LIC DEX NC		294.7 114.5	25.16 BMLH20121024AAF	35 21 44.0 81 09 19.0	95.000 491	12.1 727	86.1 Wpow License Limited Partn	0.2	-61.9*
248C1 Columbia	WCOS-FM	LIC _CN SC		186.4 6.3	126.22 BLH19900927KC	34 08 23.0 81 03 22.0	100.000 299	169.5 392	70.3 Capstar Tx, LI c	-56.3*	11.3
245C Statesville	WKKT	LIC DCN NC		18.2 198.2	30.94 BLH19860402KB	35 31 57.0 80 47 47.0	100.000 472	12.4 710	85.7 Capstar Tx, LI c	8.4	-55.6* (1)
248D Charlotte	W283AR	CP DC_ NC		0.0 0.0	0.00 BPFT20160129AGN	35 16 05.0 80 54 11.0	0.250	28.0 307	8.4 Hrn Broadcasting, Inc.	-35.7*	-34.2*
247C North Wilkesboro	WKBC-FM	LIC DE_ NC		347.3 167.2	92.12 BLH19970711KA	36 04 34.0 81 07 43.0	100.000 403	115.5 803	78.1 Wilkes Broadcasting Compan	-31.5*	2.6
247D Monroe	W247CV	CP _C_ NC		133.5 313.7	45.99 BMPFT20161027ACI	34 58 57.5 80 32 12.8	0.250	16.1 263	11.2 Radio Training Network, In	18.0	17.4

Terrain database is NGDC 30 SEC , R= 73.215 qualifying spacings or FCC minimum Spacings in KM, M= Margin in KM
In & Out distances between contours are shown at closest points. Reference zone= East Zone, Co to 3rd adjacent.
All separation margins (if shown) include rounding.
Ant Column: (D= DA Standard, Z= DA 73.215, N= Not DA 73.215, _= Omni), Polarization (C,H,V,E), Beamtilt(Y,N,X)
"*"affixed to 'IN' or 'OUT' values = site inside restricted contour.
Reference station has protected zone issue: AM tower

- (1) The +40 124.5 dBu F(50-10) contour (exhibit E-2) within the lower WKKT(FM) 245C third adjacent protected contour does not encompass any buildings, roads or population, as shown in the plot and aerial photo in exhibits E-3 and E-4

E-2 W283AR.CP Mod. +40 dBu Tabulation Within WPEG(FM) 250C

W283AR.C Charlotte, NC

74.1204(d) Showing

Translator or LPFM Maximum Licensed ERP = 0.25

Translator or LPFM Antenna Height AG = 60 Meters

W283AR.C Antenna Model = PSI FML-1

Protected Station's Contour = 88.30391 dBu

Translator's or LPFM's full Interference contour 128.30391

Review Azimuth = 290 Degrees True

Relative Field on the horizon at Review Azimuth = 1.000

Translator/LPFM ERP on the horizon at Review Azimuth = 0.25 kW

Distance between stations = 25.2 km

Protected Station= WPEG, 95 kW, 727 M Meters COR AMSL

Depression Angle From Horizon(Deg)	Vertical Relative Field	Horizontal Relative Field	ERP (kw)	Dist to IX Contour Along Dep. Angle(m)	Dist to IX Contour From Tower Base(m)	Height IX Above Ground (m)
00.00	1.000	1.0	0.2500	042.6358	042.6358	060.000
01.00	0.999	1.0	0.2496	042.6017	042.5952	059.256
02.00	0.998	1.0	0.2492	042.5676	042.5417	058.514
03.00	0.998	1.0	0.2488	042.5335	042.4752	057.774
04.00	0.997	1.0	0.2484	042.4994	042.3958	057.035
05.00	0.996	1.0	0.2480	042.4653	042.3037	056.299
06.00	0.994	1.0	0.2469	042.3715	042.1394	055.571
07.00	0.992	1.0	0.2458	042.2777	041.9625	054.848
08.00	0.989	1.0	0.2447	042.1839	041.7733	054.129
09.00	0.987	1.0	0.2436	042.0901	041.5719	053.416
10.00	0.985	1.0	0.2426	041.9963	041.3583	052.707
11.00	0.981	1.0	0.2407	041.8343	041.0656	052.018
12.00	0.977	1.0	0.2388	041.6722	040.7616	051.336
13.00	0.974	1.0	0.2370	041.5102	040.4463	050.662
14.00	0.970	1.0	0.2351	041.3482	040.1200	049.997
15.00	0.966	1.0	0.2333	041.1862	039.7828	049.340
16.00	0.961	1.0	0.2308	040.9645	039.3776	048.709
17.00	0.956	1.0	0.2283	040.7428	038.9625	048.088
18.00	0.950	1.0	0.2258	040.5211	038.5378	047.478
19.00	0.945	1.0	0.2234	040.2994	038.1038	046.880
20.00	0.940	1.0	0.2209	040.0777	037.6607	046.293
21.00	0.933	1.0	0.2177	039.7877	037.1451	045.741
22.00	0.926	1.0	0.2146	039.4978	036.6217	045.204
23.00	0.920	1.0	0.2114	039.2079	036.0911	044.680
24.00	0.913	1.0	0.2083	038.9180	035.5533	044.171
25.00	0.906	1.0	0.2052	038.6280	035.0089	043.675
26.00	0.898	1.0	0.2016	038.2870	034.4121	043.216
27.00	0.890	1.0	0.1980	037.9459	033.8100	042.773
28.00	0.882	1.0	0.1945	037.6048	033.2031	042.346
29.00	0.874	1.0	0.1910	037.2637	032.5916	041.934
30.00	0.866	1.0	0.1875	036.9226	031.9759	041.539

Depression Angle From Horizon(Deg)	Vertical Relative Field	Horizontal Relative Field	ERP (kw)	Dist to IX Contour Along Dep. Angle(m)	Dist to IX Contour From Tower Base(m)	Height IX Above Ground (m)
31.00	0.857	1.0	0.1834	036.5218	031.3053	041.190
32.00	0.847	1.0	0.1794	036.1211	030.6324	040.859
33.00	0.838	1.0	0.1755	035.7203	029.9575	040.545
34.00	0.828	1.0	0.1716	035.3195	029.2812	040.250
35.00	0.819	1.0	0.1677	034.9187	028.6037	039.971
36.00	0.808	1.0	0.1634	034.4668	027.8842	039.741
37.00	0.798	1.0	0.1591	034.0148	027.1655	039.529
38.00	0.787	1.0	0.1549	033.5629	026.4479	039.337
39.00	0.777	1.0	0.1508	033.1110	025.7321	039.163
40.00	0.766	1.0	0.1467	032.6590	025.0183	039.007
41.00	0.754	1.0	0.1422	032.1559	024.2684	038.904
42.00	0.742	1.0	0.1378	031.6528	023.5226	038.820
43.00	0.731	1.0	0.1334	031.1497	022.7815	038.756
44.00	0.719	1.0	0.1292	030.6466	022.0453	038.711
45.00	0.707	1.0	0.1250	030.1435	021.3147	038.685(1)
46.00	0.694	1.0	0.1205	029.5978	020.5603	038.709
47.00	0.681	1.0	0.1161	029.0520	019.8134	038.753
48.00	0.669	1.0	0.1118	028.5063	019.0744	038.816
49.00	0.656	1.0	0.1075	027.9606	018.3438	038.898
50.00	0.643	1.0	0.1034	027.4148	017.6219	038.999
51.00	0.629	1.0	0.0989	026.8179	016.8771	039.159
52.00	0.615	1.0	0.0946	026.2210	016.1433	039.338
53.00	0.601	1.0	0.0903	025.6241	015.4210	039.536
54.00	0.587	1.0	0.0861	025.0272	014.7106	039.753
55.00	0.573	1.0	0.0821	024.4303	014.0127	039.988
56.00	0.558	1.0	0.0780	023.8078	013.3132	040.262
57.00	0.544	1.0	0.0739	023.1854	012.6276	040.555
58.00	0.529	1.0	0.0700	022.5629	011.9565	040.866
59.00	0.515	1.0	0.0662	021.9404	011.3001	041.193
60.00	0.500	1.0	0.0625	021.3179	010.6590	041.538
61.00	0.485	1.0	0.0587	020.6613	010.0168	041.929
62.00	0.469	1.0	0.0550	020.0047	009.3916	042.337
63.00	0.454	1.0	0.0515	019.3481	008.7839	042.761
64.00	0.438	1.0	0.0480	018.6915	008.1938	043.200
65.00	0.423	1.0	0.0447	018.0349	007.6219	043.655
66.00	0.407	1.0	0.0414	017.3442	007.0545	044.155
67.00	0.391	1.0	0.0381	016.6535	006.5071	044.670
68.00	0.374	1.0	0.0350	015.9628	005.9798	045.200
69.00	0.358	1.0	0.0321	015.2721	005.4730	045.742
70.00	0.342	1.0	0.0292	014.5814	004.9871	046.298
71.00	0.325	1.0	0.0265	013.8737	004.5168	046.882
72.00	0.309	1.0	0.0238	013.1659	004.0685	047.478
73.00	0.292	1.0	0.0213	012.4582	003.6424	048.086
74.00	0.276	1.0	0.0190	011.7504	003.2389	048.705
75.00	0.259	1.0	0.0168	011.0427	002.8581	049.334
76.00	0.242	1.0	0.0146	010.3179	002.4961	049.989
77.00	0.225	1.0	0.0127	009.5931	002.1580	050.653

Depression Angle From Horizon(Deg)	Vertical Relative Field	Horizontal Relative Field	ERP (kw)	Dist to IX Contour Along Dep. Angle(m)	Dist to IX Contour From Tower Base(m)	Height IX Above Ground (m)
78.00	0.208	1.0	0.0108	008.8682	001.8438	051.326
79.00	0.191	1.0	0.0091	008.1434	001.5538	052.006
80.00	0.174	1.0	0.0076	007.4186	001.2882	052.694
81.00	0.157	1.0	0.0061	006.6768	001.0445	053.405
82.00	0.139	1.0	0.0048	005.9349	000.8260	054.123
83.00	0.122	1.0	0.0037	005.1930	000.6329	054.846
84.00	0.104	1.0	0.0027	004.4512	000.4653	055.573
85.00	0.087	1.0	0.0019	003.7093	000.3233	056.305
86.00	0.070	1.0	0.0012	002.9760	000.2076	057.031
87.00	0.053	1.0	0.0007	002.2426	000.1174	057.760
88.00	0.035	1.0	0.0003	001.5093	000.0527	058.492
89.00	0.018	1.0	0.0001	000.7760	000.0135	059.224
90.00	0.001	1.0	0.0000	000.0426	000.0000	059.957

(1) The +40 128.3 dBu F(50-10) contour within the WPEG(FM) 250C second adjacent protected contour lowest point above the site elevation = 38.7 meters.

E-3 W283AR.CP Mod. +40 dBu Tabulation Within WKKT(FM) 245C

W283AR.C Charlotte, NC

74.1204(d) Showing

Translator or LPFM Maximum Licensed ERP = 0.25

Translator or LPFM Antenna Height AG = 60 Meters

W283AR.C Antenna Model = PSI FML-1

Protected Station's Contour = 84.5069 dBu

Translator's or LPFM's full Interference contour 124.5069

Review Azimuth = 290 Degrees True

Relative Field on the horizon at Review Azimuth = 1.000

Translator/LPFM ERP on the horizon at Review Azimuth = 0.25 kW

Distance between stations = 30.9 km

Protected Station= WKKT, 100 kW, 710 M Meters COR AMSL

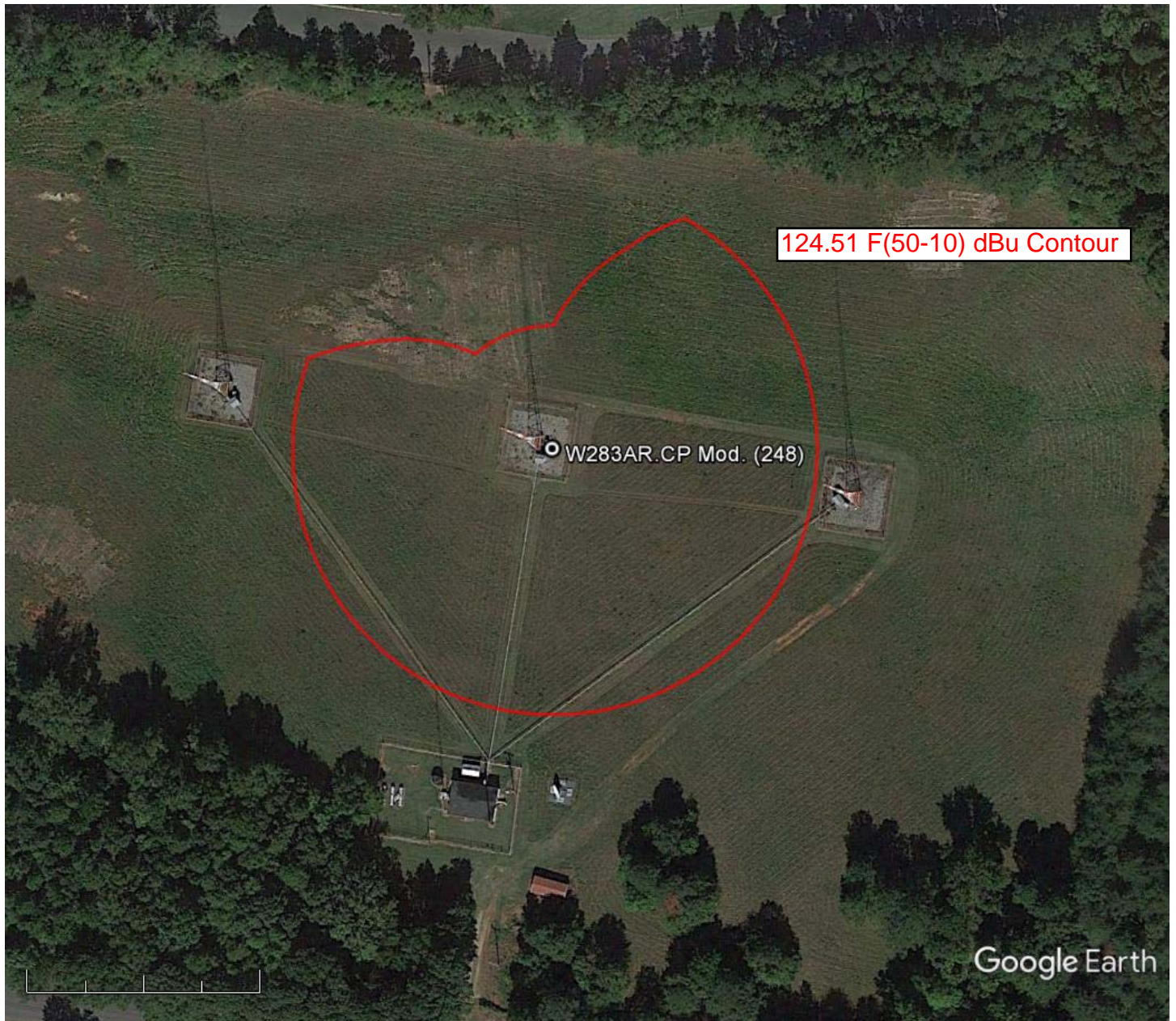
Depression Angle From Horizon(Deg)	Vertical Relative Field	Horizontal Relative Field	ERP (kw)	Dist to IX Contour Along Dep. Angle(m)	Dist to IX Contour From Tower Base(m)	Height IX Above Ground (m)
00.00	1.000	1.0	0.2500	066.0123	066.0123	060.000
01.00	0.999	1.0	0.2496	065.9595	065.9495	058.849
02.00	0.998	1.0	0.2492	065.9067	065.8666	057.700
03.00	0.998	1.0	0.2488	065.8539	065.7636	056.553
04.00	0.997	1.0	0.2484	065.8011	065.6408	055.410
05.00	0.996	1.0	0.2480	065.7483	065.4981	054.270
06.00	0.994	1.0	0.2469	065.6030	065.2437	053.143
07.00	0.992	1.0	0.2458	065.4578	064.9699	052.023
08.00	0.989	1.0	0.2447	065.3126	064.6770	050.910
09.00	0.987	1.0	0.2436	065.1674	064.3650	049.806
10.00	0.985	1.0	0.2426	065.0221	064.0343	048.709
11.00	0.981	1.0	0.2407	064.7713	063.5813	047.641
12.00	0.977	1.0	0.2388	064.5204	063.1105	046.585
13.00	0.974	1.0	0.2370	064.2696	062.6224	045.542
14.00	0.970	1.0	0.2351	064.0187	062.1171	044.512
15.00	0.966	1.0	0.2333	063.7679	061.5951	043.496
16.00	0.961	1.0	0.2308	063.4246	060.9677	042.518
17.00	0.956	1.0	0.2283	063.0814	060.3250	041.557
18.00	0.950	1.0	0.2258	062.7381	059.6675	040.613
19.00	0.945	1.0	0.2234	062.3948	058.9955	039.686
20.00	0.940	1.0	0.2209	062.0516	058.3094	038.777
21.00	0.933	1.0	0.2177	061.6027	057.5111	037.924
22.00	0.926	1.0	0.2146	061.1538	056.7008	037.091
23.00	0.920	1.0	0.2114	060.7049	055.8792	036.281
24.00	0.913	1.0	0.2083	060.2560	055.0466	035.492
25.00	0.906	1.0	0.2052	059.8072	054.2037	034.724
26.00	0.898	1.0	0.2016	059.2791	053.2797	034.014
27.00	0.890	1.0	0.1980	058.7510	052.3475	033.328
28.00	0.882	1.0	0.1945	058.2229	051.4077	032.666
29.00	0.874	1.0	0.1910	057.6948	050.4610	032.029
30.00	0.866	1.0	0.1875	057.1667	049.5078	031.417

Depression Angle From Horizon(Deg)	Vertical Relative Field	Horizontal Relative Field	ERP (kw)	Dist to IX Contour Along Dep. Angle(m)	Dist to IX Contour From Tower Base(m)	Height IX Above Ground (m)
31.00	0.857	1.0	0.1834	056.5462	048.4695	030.877
32.00	0.847	1.0	0.1794	055.9256	047.4276	030.364
33.00	0.838	1.0	0.1755	055.3051	046.3828	029.879
34.00	0.828	1.0	0.1716	054.6846	045.3356	029.421
35.00	0.819	1.0	0.1677	054.0641	044.2867	028.990
36.00	0.808	1.0	0.1634	053.3644	043.1727	028.633
37.00	0.798	1.0	0.1591	052.6646	042.0598	028.306
38.00	0.787	1.0	0.1549	051.9649	040.9489	028.007
39.00	0.777	1.0	0.1508	051.2652	039.8405	027.738
40.00	0.766	1.0	0.1467	050.5654	038.7354	027.497
41.00	0.754	1.0	0.1422	049.7865	037.5743	027.337
42.00	0.742	1.0	0.1378	049.0075	036.4197	027.208
43.00	0.731	1.0	0.1334	048.2286	035.2722	027.108
44.00	0.719	1.0	0.1292	047.4497	034.1324	027.039
45.00	0.707	1.0	0.1250	046.6707	033.0012	026.999(1)
46.00	0.694	1.0	0.1205	045.8258	031.8332	027.036
47.00	0.681	1.0	0.1161	044.9808	030.6768	027.103
48.00	0.669	1.0	0.1118	044.1358	029.5326	027.201
49.00	0.656	1.0	0.1075	043.2909	028.4014	027.328
50.00	0.643	1.0	0.1034	042.4459	027.2837	027.485
51.00	0.629	1.0	0.0989	041.5218	026.1305	027.732
52.00	0.615	1.0	0.0946	040.5976	024.9944	028.009
53.00	0.601	1.0	0.0903	039.6734	023.8761	028.315
54.00	0.587	1.0	0.0861	038.7492	022.7762	028.651
55.00	0.573	1.0	0.0821	037.8251	021.6956	029.016
56.00	0.558	1.0	0.0780	036.8613	020.6126	029.441
57.00	0.544	1.0	0.0739	035.8975	019.5512	029.894
58.00	0.529	1.0	0.0700	034.9337	018.5121	030.375
59.00	0.515	1.0	0.0662	033.9699	017.4958	030.882
60.00	0.500	1.0	0.0625	033.0062	016.5031	031.416
61.00	0.485	1.0	0.0587	031.9896	015.5089	032.021
62.00	0.469	1.0	0.0550	030.9730	014.5409	032.652
63.00	0.454	1.0	0.0515	029.9564	013.5999	033.309
64.00	0.438	1.0	0.0480	028.9398	012.6864	033.989
65.00	0.423	1.0	0.0447	027.9232	011.8009	034.693
66.00	0.407	1.0	0.0414	026.8538	010.9224	035.468
67.00	0.391	1.0	0.0381	025.7844	010.0748	036.265
68.00	0.374	1.0	0.0350	024.7150	009.2584	037.085
69.00	0.358	1.0	0.0321	023.6456	008.4738	037.925
70.00	0.342	1.0	0.0292	022.5762	007.7215	038.785
71.00	0.325	1.0	0.0265	021.4804	006.9933	039.690
72.00	0.309	1.0	0.0238	020.3846	006.2992	040.613
73.00	0.292	1.0	0.0213	019.2888	005.6395	041.554
74.00	0.276	1.0	0.0190	018.1930	005.0147	042.512
75.00	0.259	1.0	0.0168	017.0972	004.4251	043.485
76.00	0.242	1.0	0.0146	015.9750	003.8647	044.500
77.00	0.225	1.0	0.0127	014.8528	003.3411	045.528
78.00	0.208	1.0	0.0108	013.7306	002.8547	046.569

Depression Angle From Horizon(Deg)	Vertical Relative Field	Horizontal Relative Field	ERP (kw)	Dist to IX Contour Along Dep. Angle(m)	Dist to IX Contour From Tower Base(m)	Height IX Above Ground (m)
79.00	0.191	1.0	0.0091	012.6084	002.4058	047.623
80.00	0.174	1.0	0.0076	011.4861	001.9945	048.688
81.00	0.157	1.0	0.0061	010.3375	001.6171	049.790
82.00	0.139	1.0	0.0048	009.1889	001.2788	050.901
83.00	0.122	1.0	0.0037	008.0403	000.9799	052.020
84.00	0.104	1.0	0.0027	006.8917	000.7204	053.146
85.00	0.087	1.0	0.0019	005.7431	000.5005	054.279
86.00	0.070	1.0	0.0012	004.6077	000.3214	055.404
87.00	0.053	1.0	0.0007	003.4722	000.1817	056.533
88.00	0.035	1.0	0.0003	002.3368	000.0816	057.665
89.00	0.018	1.0	0.0001	001.2014	000.0210	058.799
90.00	0.001	1.0	0.0000	000.0660	000.0000	059.934

(1) The +40 124.51 dBu F(50-10) contour within the WKKT(FM) 245C third adjacent protected contour lowest point above the site elevation = 26.9 meters.

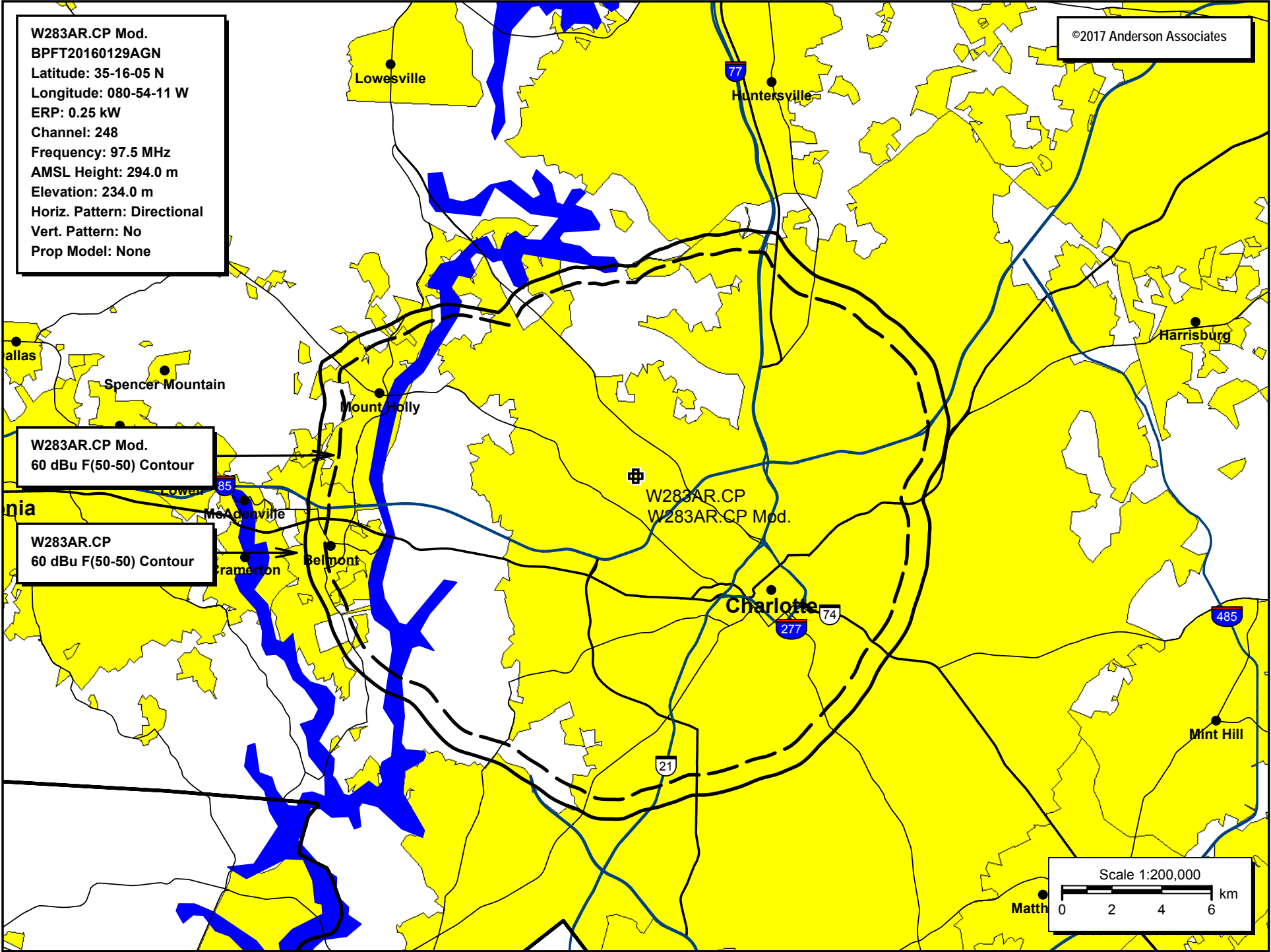
E-4 W283AR.CP Mod. +40 dBu Contour Aerial Photo



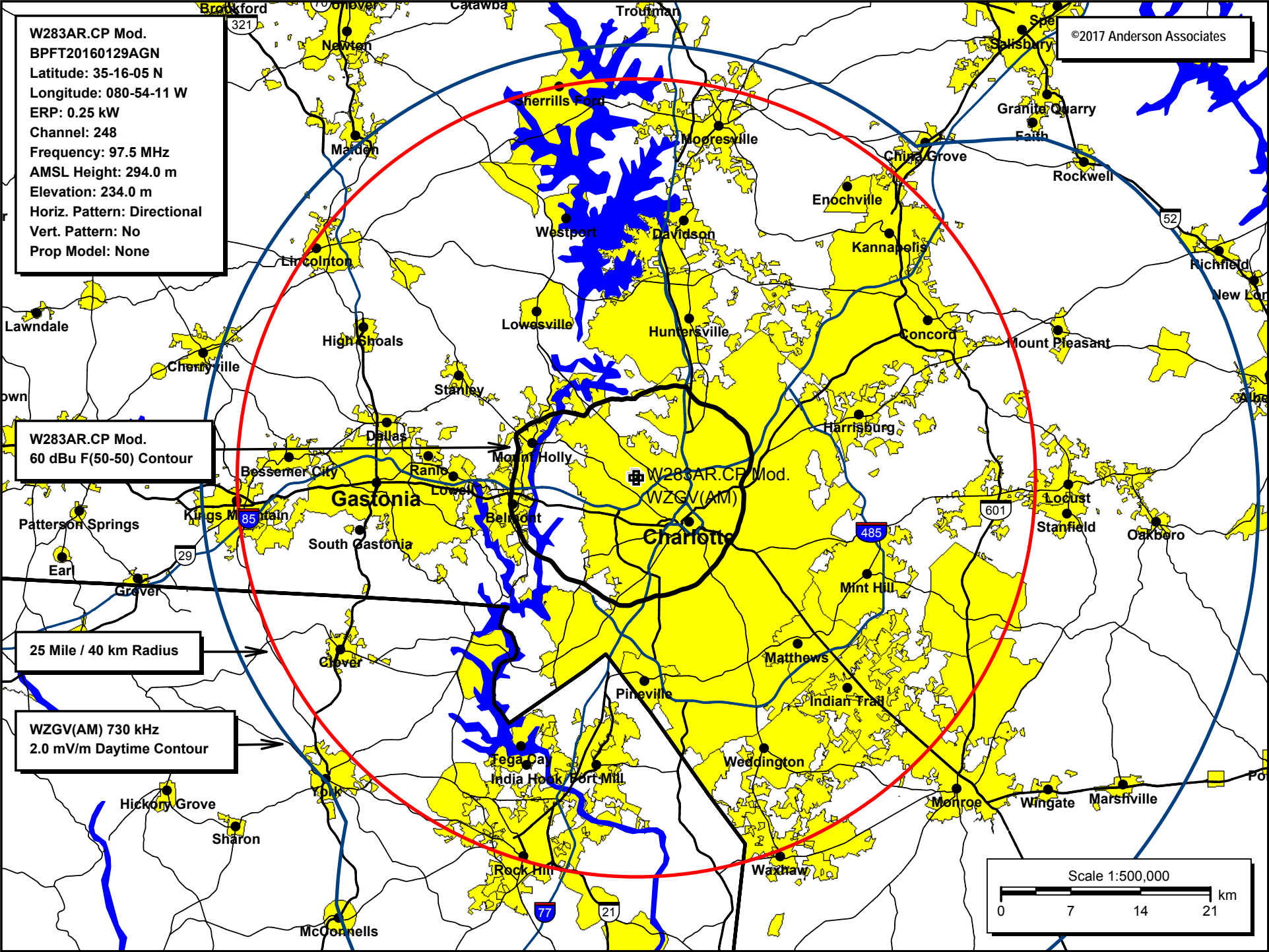
Google Earth



E-5 W283AR.CP Mod. 60 dBu Contour Overlap Plot



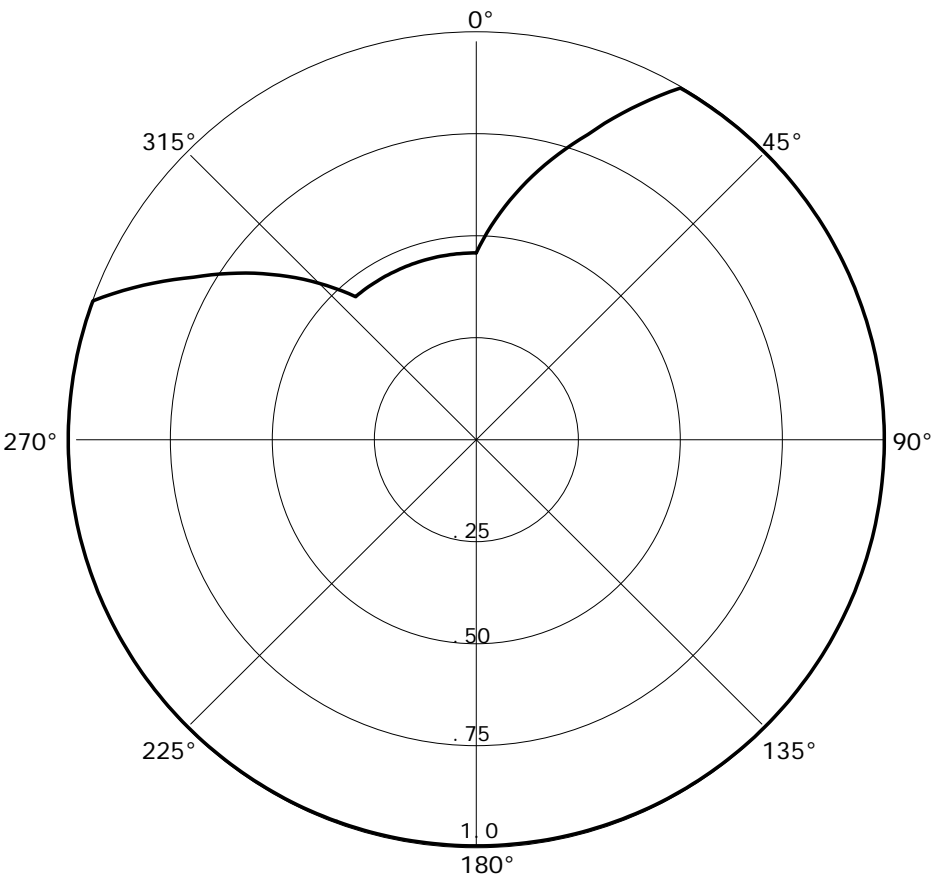
E-6 W283AR.CP Mod. 60 dBu Contour Plot



E-7 W283AR.CP Mod Directional Antenna Pattern

RMS(V)= .914
Graph is Relative Field

Azi	Field	dBk	kW
000	0.460	-12.765	0.053
010	0.630	-10.034	0.099
020	0.800	-07.959	0.160
030	1.000	-06.021	0.250
040	1.000	-06.021	0.250
050	1.000	-06.021	0.250
060	1.000	-06.021	0.250
070	1.000	-06.021	0.250
080	1.000	-06.021	0.250
090	1.000	-06.021	0.250
100	1.000	-06.021	0.250
110	1.000	-06.021	0.250
120	1.000	-06.021	0.250
130	1.000	-06.021	0.250
140	1.000	-06.021	0.250
150	1.000	-06.021	0.250
160	1.000	-06.021	0.250
170	1.000	-06.021	0.250
180	1.000	-06.021	0.250
190	1.000	-06.021	0.250
200	1.000	-06.021	0.250
210	1.000	-06.021	0.250
220	1.000	-06.021	0.250
230	1.000	-06.021	0.250
240	1.000	-06.021	0.250
250	1.000	-06.021	0.250
260	1.000	-06.021	0.250
270	1.000	-06.021	0.250
280	1.000	-06.021	0.250
290	1.000	-06.021	0.250
300	0.800	-07.959	0.160
310	0.630	-10.034	0.099
320	0.460	-12.765	0.053
330	0.460	-12.765	0.053
340	0.460	-12.765	0.053
350	0.460	-12.765	0.053



ASR Registration 1002305

Registration Detail

Reg Number	1002305	Status	Constructed
File Number	A0905621	Constructed	01/01/1951
EMI	No	Dismantled	
NEPA	No		

Antenna Structure

Structure Type 3LTA2

Location (in NAD83 Coordinates)

Lat/Long	35-16-05.6 N 080-54-10.4 W	Address	1100 TARHILL RD
City, State	CHARLOTTE , NC		
Zip	28208	County	MECKLENBURG
Center of AM Array	35-16-05.6 N 080-54-10.4 W	Position of Tower in Array	2 of 3

Heights (meters)

Elevation of Site Above Mean Sea Level	Overall Height Above Ground (AGL)
234.4	75.3
Overall Height Above Mean Sea Level	Overall Height Above Ground w/o Appurtenances
309.7	74.4

Painting and Lighting Specifications

FAA Chapters 3, 4, 5, 12

Paint and Light in Accordance with FAA Circular Number 70/7460-1K

FAA Notification

FAA Study	2014-ASO-3642-OE	FAA Issue Date	05/16/2014
-----------	------------------	----------------	------------

Owner & Contact Information

FRN	0002060788	Owner Entity Type	Corporation
-----	------------	-------------------	-------------

Owner

BIBLE BROADCASTING NETWORK, INC	P: (704)523-5555
Attention To: MICHAEL RALEY	F:
11530 CARMEL COMMONS BLVD	E: MRALEY@BBNMEDIA.ORG
CHARLOTTE , NC 28226	

Contact

RALEY , MICHAEL G	P: (704)523-5555
11530 CARMEL COMMONS BLVD	F:
CHARLOTTE , NC 28226	E: MRALEY@BBNMEDIA.ORG

Last Action Status

Status	Constructed	Received	05/21/2014
Purpose	Notification	Entered	05/21/2014