

**Page #1, Waiver Request of Section 74.1204**

W204AZ, Madison Heights, VA 10 Watts ERP

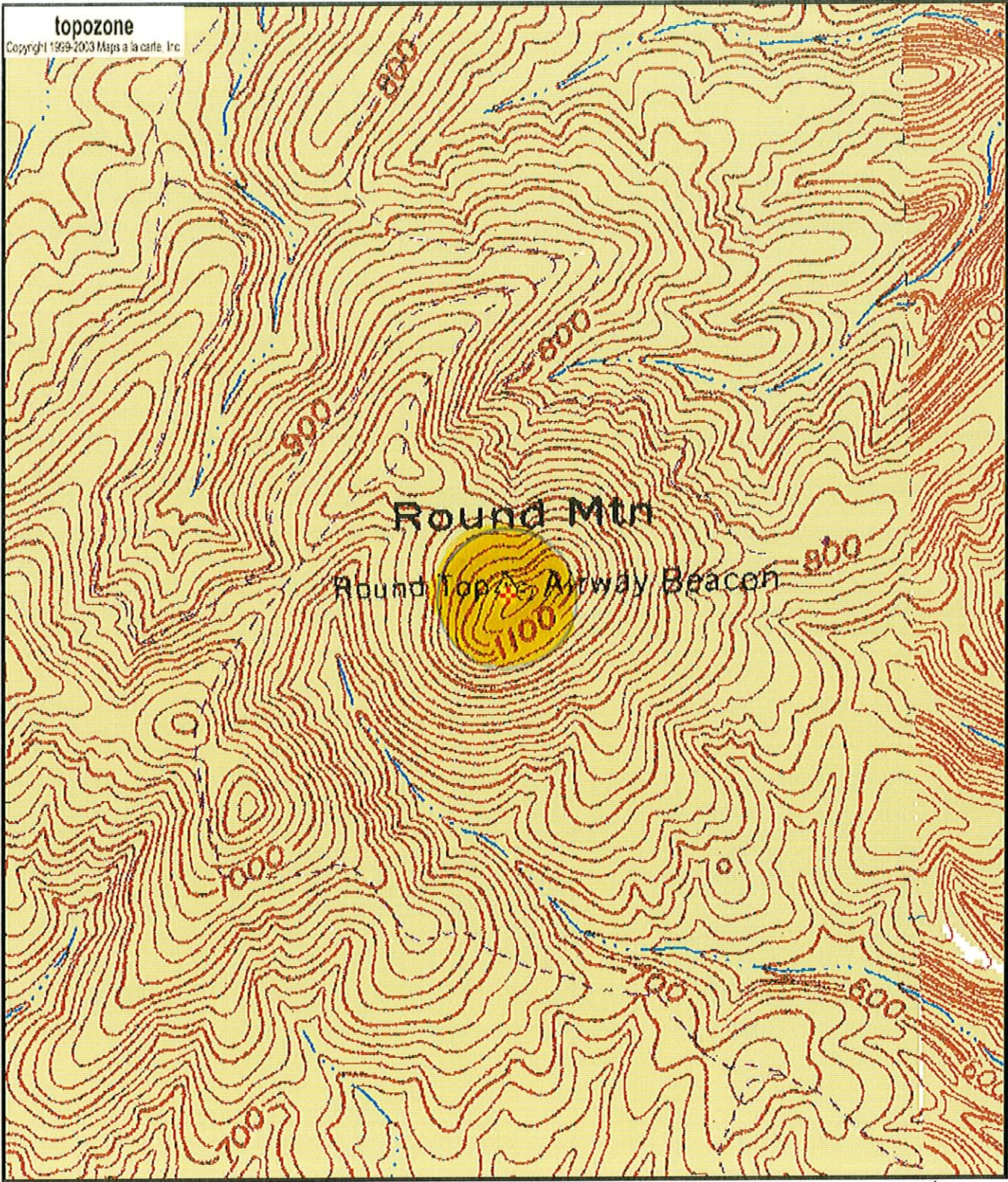
CSN International 8/2005

The proposed site is contained entirely inside the service contour of second-adjacent station WRLV, Lynchburg, VA

**WRLV.LIC**

The proposed site is contained entirely inside the service contour of second-adjacent Station WRLV, Channel 202, Class C1, 50 kW, Lynchburg, VA. The level of the second-adjacent station WRLV arriving protected F(50,50) signal at the proposed transmitter site 70-dBu. Using the Undesired-to-Desired method for calculating proposed interference (the basis of the FCC current contour overlap regulations and an acceptable method for the purposes of determining lack of interference for an FM Translator), the proposed interfering contour with respect to WRLV is 110-dBu (free-space contour method employed). This means that the 110-dBu interfering signal would, in the worst case at the maximum radial, extend 71 meters, or .071 km from the base of the proposed tower site, which is a previously authorized non-population area. Since no population inhabits the interference area (See Topo Map), CSN International respectfully requests a waiver of the FM translator contour overlap regulations with respect to second-adjacent channel station WRLV.





0 0.1 0.2 0.3 0.4 0.5 km  
0 0.09 0.18 0.27 0.36 0.45 mi  
Map center is 37° 28' 07"N, 79° 00' 27"W (NAD27)  
**Kelly** quadrangle  
Projection is UTM Zone 17 NAD83 Datum

M\*  
G  
M=-9.027  
G=1.213