



October 13, 2014

Mr. Michael S. Powell  
Tower Erection & Maintenance Inc.  
5585 County Road 68  
Spencerville, IN 46788

RE: Antenna orientation from True (geodetic) North  
FMECD/4-PLUS-DA, FREQ. 88.3  
WLAB, FORT WAYNE, IN

On September 20, 2014, a control line was established that was oriented to Geodetic (True) North from a control point set this survey to the Southwest leg of the existing above referenced tower utilizing Topcon Legacy (base) and Hiper (rover) GPS receivers in RTK mode.

Occupying said control point with a NIKON total station, the antennas at bays 1 through 4 were oriented to within +/- 1° of a geodetic azimuth of 180 degrees as stipulated on the attached drawing number 1918D01 dated 8/15/14 by Systems With Reliability, LP.

Sincerely,



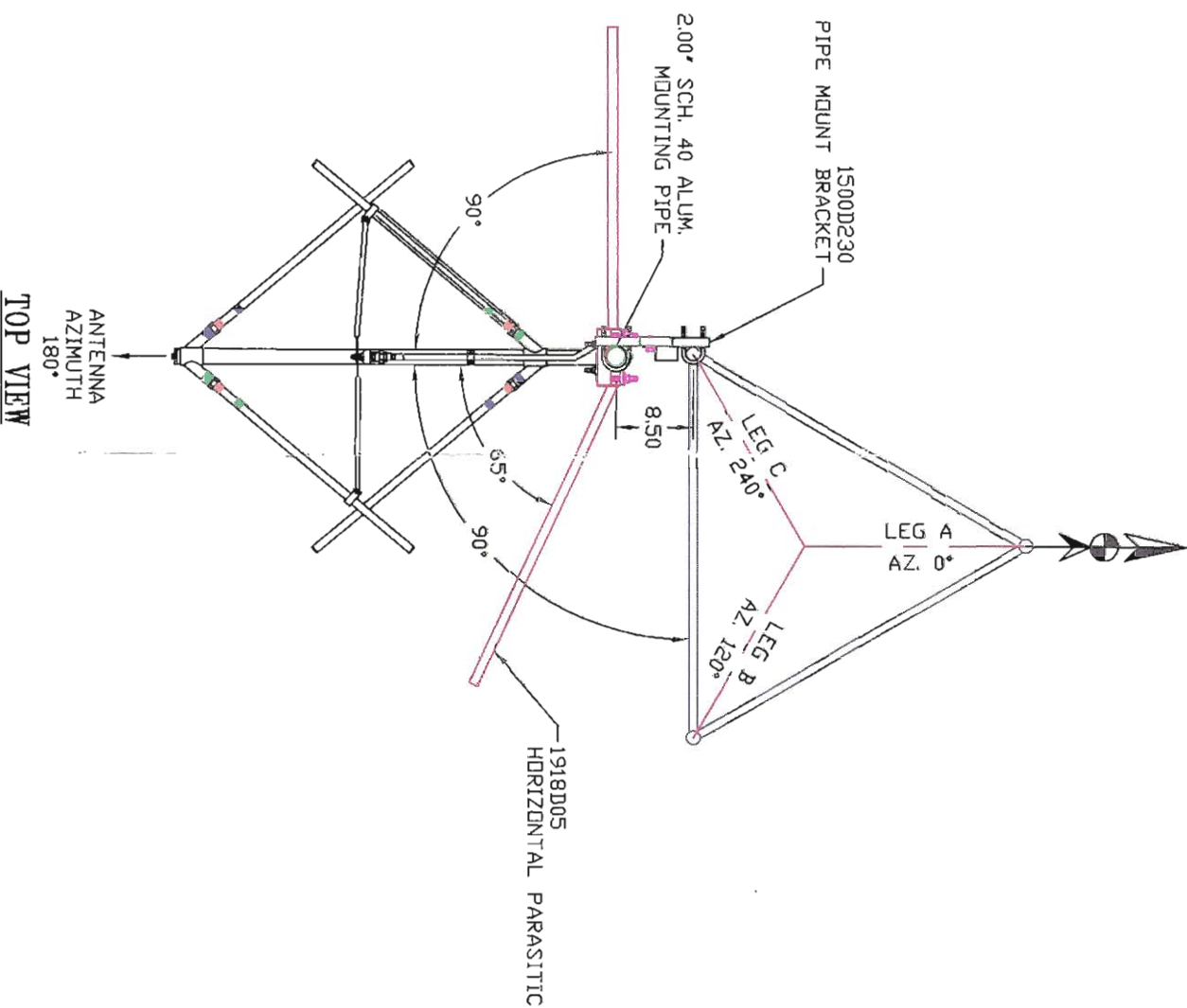
Timothy C. Gouloff, LS



NOTE:

TRUE  
NORTH

DRAWING  
NUMBER: 1918D01



TOP VIEW

TITLE:

FMECD/4--PLUS--DA, FREQ. 88.3

MATERIAL:

WLAB, FORT WAYNE, IN  
ANTENNA ORIENTATION  
FROM TRUE NORTH

SIZE

A

PARTS MADE BY THIS DRAWING

SCALE: NTS

NAME: RAC

DATE:

8/15/14

SHEET 1 OF 1

REVISION RECORD  
REV. APPROVAL DATE

DRAWING  
NUMBER: 1918D01



SYSTEMS WITH RELIABILITY, LP  
619 INDUSTRIAL PARK ROAD  
EBENSBURG, PENNSYLVANIA 15931