

Exhibit 13.1 - Copy of Existing Antenna Structure Registration



Registration Detail

Reg Number	1031315	Status	Constructed
File Number	A0754568	Constructed	12/01/1995
EMI	No	Dismantled	
NEPA	No		

Antenna Structure

Structure Type TOWER - Free standing or Guyed Structure used for Commu

Location (in NAD83 Coordinates)

Lat/Long	26-45-43.2 N 080-04-41.1 W	Address	1785 HILL AVE
City, State	MANGONIA PARK , FL		
Zip	33407	County	PALM BEACH
Center of AM Array		Position of Tower in Array	

Heights (meters)

Elevation of Site Above Mean Sea Level	Overall Height Above Ground (AGL)
5.2	158.2
Overall Height Above Mean Sea Level	Overall Height Above Ground w/o Appurtenances
163.4	152.4

Painting and Lighting Specifications

FAA Chapters 4, 7, 12
 Paint and Light in Accordance with FAA Circular Number 70/7460-1K

FAA Notification

FAA Study	2011-ASO-7993-OE	FAA Issue Date	01/31/2012
-----------	------------------	----------------	------------

Owner & Contact Information

FRN	0009728882	Owner Entity Type	
-----	------------	-------------------	--

Owner

Pinnacle Towers Acquisition LLC
 Attention To: Regulatory Department
 2000 Corporate Drive
 Canonsburg , PA 15317

P: (724)416-2000
 F:
 E: Regulatory.Department@Crownncastle.com

Contact

Verre , Christine A
 2000 Corporate Drive
 Canonsburg , PA 15317

P: (336)643-2524
 F:
 E: Christine.Verre@Crownncastle.com

Last Action Status

Status	Constructed	Received	02/09/2012
Purpose	Notification	Entered	02/09/2012
Mode	Interactive		

Related Applications

02/09/2012	A0754567 - Modification (MD)
02/09/2012	A0754568 - Notification (NT)
07/21/2008	A0599914 - Modification (MD)

Related applications (12)

Comments

Comments

None

History

Date

Event

02/10/2012	Registration Printed
02/09/2012	ASR Application receipt email sent: Tower email
02/09/2012	Construction Notification Received

All History (25)

Automated Letters

02/10/2012	Authorization, Reference
07/22/2008	Authorization, Reference
08/31/2007	Authorization, Reference 578336
All letters (8)	

Exhibit 13.2

Vertical Plan of Antenna System

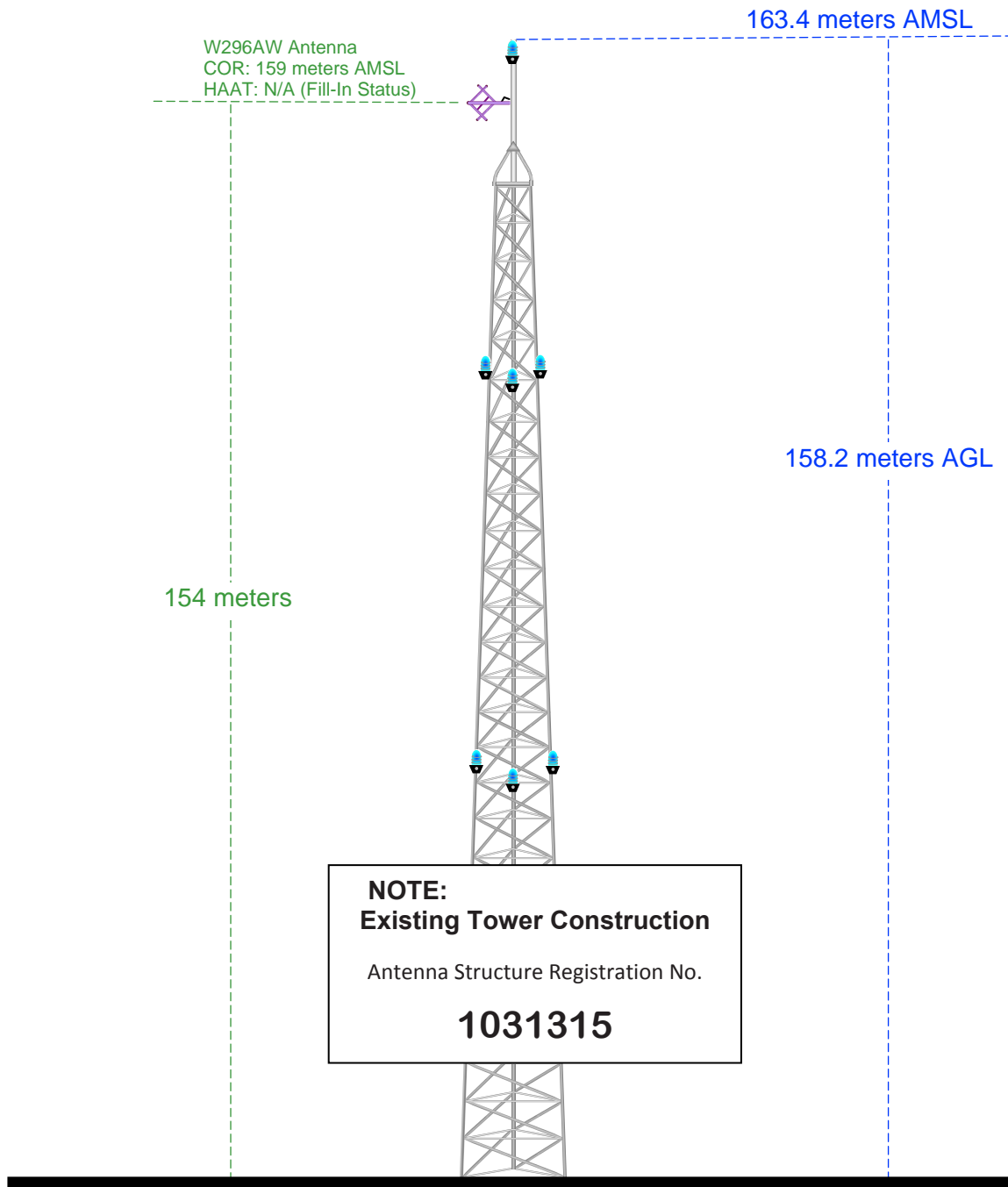
The site is located at 1785 Hill Avenue,
the city of Mangonia Park, Palm Beach County, Florida.

Site Location (NAD 27)

NL: 26° 45' 42"

WL: 80° 04' 42"

(26-45-43.2NL; 80-04-41.1WL NAD1983)



Ground Elevation = 5.2 m AMSL

Drawing is not to Scale

MUNN-REESE, INC.

Broadcast Engineering Consultants
Coldwater, MI 49036



NED 03 sec terrain database
US Census 2010 PL database

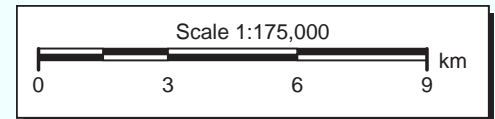
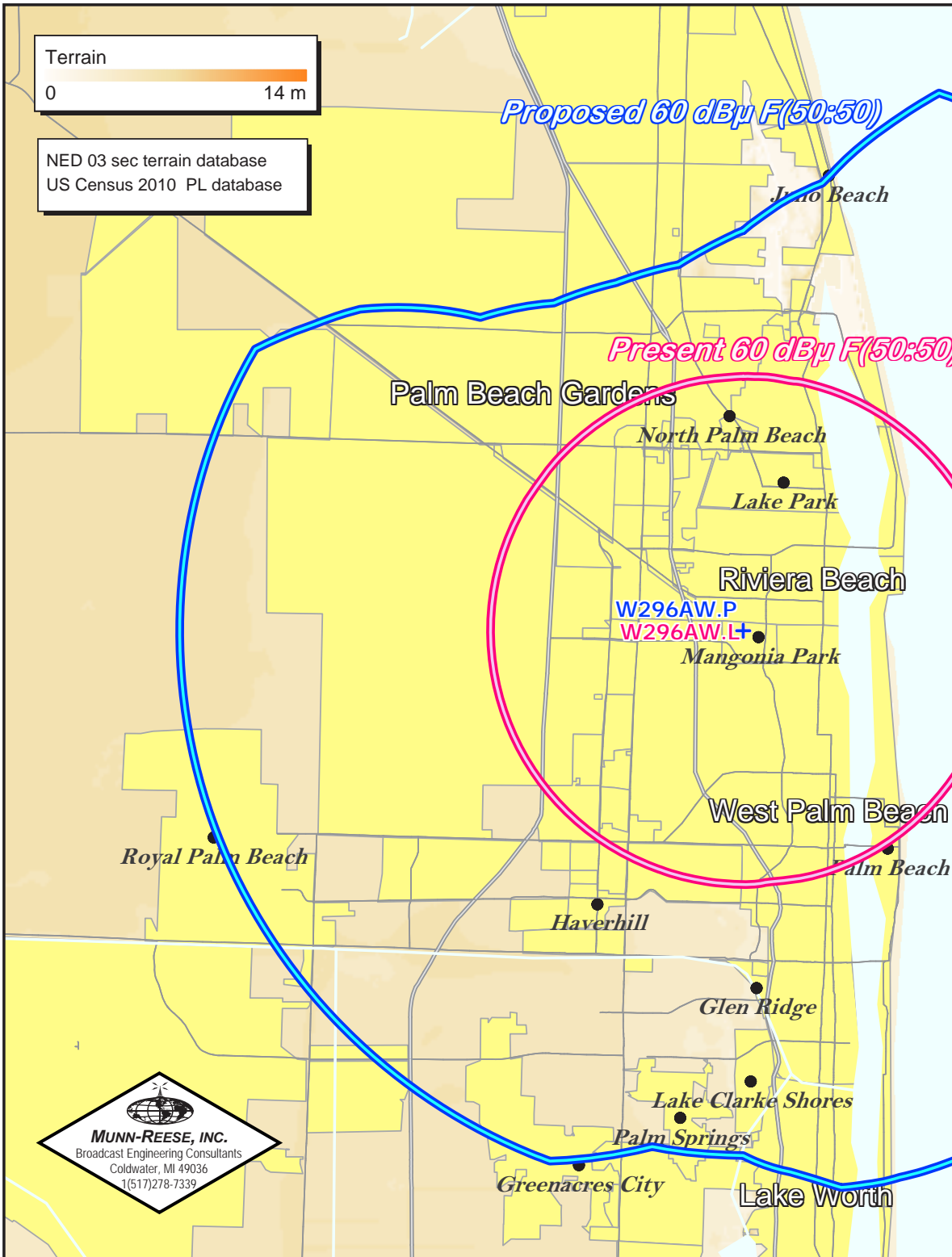
Exhibit 13.3 Present vs. Proposed Service Contour Study

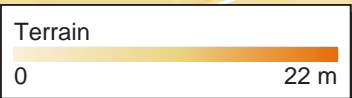
W296AW.P
Mangonia Park, FL
Proposed Operation
Facility ID: 82621
Latitude: 26-45-42 N
Longitude: 080-04-42 W
ERP: 0.25 kW
Channel: 296D
Frequency: 107.1 MHz
AMSL Height: 159.0 m
Horiz. Pattern: Directional

60 dBμ Contour
Total Population: 423,250
Total Area: 753 sq. km

W296AW.L
Mangonia Park, FL
BLFT19970507TJ
Facility ID: 82621
Latitude: 26-45-42 N
Longitude: 080-04-42 W
ERP: 0.01 kW
Channel: 296D
Frequency: 107.1 MHz
AMSL Height: 161.0 m
Horiz. Pattern: Omni

60 dBμ Contour
Total Population: 158,786
Total Area: 167 sq. km





NED 03 sec terrain database
US Census 2010 PL database

Exhibit 13.4 Proposed vs. Primary Service Contour Study

WLLY-FM
Palm Beach Gardens, FL
BLH20090403BRO
Facility ID: 24230
Latitude: 26-45-42 N
Longitude: 080-04-42 W
ERP: 6.00 kW
Channel: 258A
Frequency: 99.5 MHz
AMSL Height: 102.7 m
Horiz. Pattern: Omni

W296AW.P
Mangonia Park, FL
Proposed Operation
Facility ID: 82621
Latitude: 26-45-42 N
Longitude: 080-04-42 W
ERP: 0.25 kW
Channel: 296D
Frequency: 107.1 MHz
AMSL Height: 159.0 m
Horiz. Pattern: Directional

W296AW.P
WLLY-FM
Mangonia Park

Primary 60 dBμ F(50:50)

Proposed 60 dBμ F(50:50)

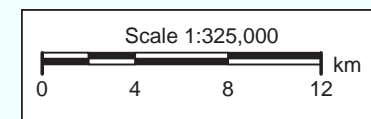


Exhibit 13.5

Tabulation of Proposed Commercial Allocation

Black Media Works, Inc. CH# 296D - 107.1 MHz, Pwr= 0.25 kw DA, HAAT= 155.6 M, COR= 159 M Average Protected F(50-50)= 16.26 km Standard Directional											
REFERENCE										DISPLAY DATES	
26 45 42.0 N.										DATA 03-03-14	
80 04 42.0 W.										SEARCH 03-04-14	
CH	CALL	TYPE	ANT	AZI	DIST	LAT	PWR(kw)	INT(km)	PRO(km)	*IN*	*OUT*
CITY	STATE			<--	FILE #	LNG	HAAT(M)	COR(M)	LICENSEE	(Overlap in km)	
296D	W296AW	CP	DC_	0.0	0.00	26 45 42.0	0.250	38.3	11.5	-49.8*	-49.8*
Mangonia Park	FL			0.0	BPFT20130301AGD	80 04 42.0	156	159	Black Media Works, Inc.		
296D	W296AW	LIC	_CN	0.0	0.00	26 45 42.0	0.010	24.6	7.3	-36.1*	-45.6*
Mangonia Park	FL			0.0	BLFT19970507TJ	80 04 42.0	157	161	Black Media Works, Inc.		
Translator for WJFP, Fort Pierce, FL											
295D	W295BJ	LIC	_C_	341.3	30.94	27 01 31.0	0.190	23.5	15.6	-3.2	0.3
Jupiter	FL			161.2	BLFT20101115FKT	80 10 43.0	166	169	North Palm Beach Broadcast		
296L1	1590712	APP	___	186.6	55.11	26 16 09.0	0.100			21.5	0.1
Pompano Beach	FL			6.6	BNPL20131113BIG	80 08 30.0		33	Calvary Chapel Pompano Bea		
296C1	WAOA-FM	LIC	_CX	338.2	164.81	28 08 11.0	100.000	153.7	57.6	0.4	71.6
Melbourne	FL			157.9	BMLH20070125ADK	80 42 12.0	148	151	Cumulus Licensing Llc		
296L1	1586262	APP	___	187.7	68.21	26 09 13.0	0.013			35.0	13.3
Hollywood	FL			7.7	BNPL20131112AIF	80 10 12.0	83	85	Caribbean Education Networ		
294C0	WXDJ	LIC	ZCX	186.4	86.01	25 59 34.0	100.000	9.6	70.3	61.4	14.7
Fort Lauderdale	FL			6.4	BLH20060612AAJ	80 10 27.0	300	302	Wrma Licensing, Inc.		
298C1	WAMR-FM	LIC	DC_	188.4	89.28	25 58 02.0	95.000	10.1	72.3	64.2	16.0
Miami	FL			8.4	BLH20050303ADC	80 12 34.0	307	308	Wqba-fm License Corp.		
297D	W297AG	LIC	_C_	336.7	42.01	27 06 31.0	0.010	4.4	3.2	26.9	23.7
Stuart	FL			156.6	BLFT20010509AAM	80 14 47.0	29	32	Central Educational Broadc		
296C2	WCKT	LIC	_CX	254.2	177.00	26 19 00.0	23.500	129.1	51.8	31.7	72.8
Lehigh Acres	FL			73.4	BLH20020806AAP	81 47 13.0	220	220	Clear Channel Broadcasting		
296L1	1565335	APP	___	187.5	92.33	25 56 17.7	0.100			58.7	37.3
Miami Beach	FL			7.5	BNPL20131107APS	80 11 57.8	28	30	Miami Multi-media Associat		
296C3	WURN-FM	APP	ZCX	192.3	170.04	25 16 00.0	12.500	106.0	39.4	48.8	80.6
Key Largo	FL			12.1	BMPH20131107ADY	80 26 16.0	145	145	Actualidad Key Largo Fm Li		
243C	WPOW	LIC	DC_	188.4	89.28	25 58 02.0	100.000	17.1	5.2	29.0R	60.3M
Miami	FL			8.4	BLH20050301ACH	80 12 34.0	307	308	Wpow License Limited Partn		
296C3	WURN-FM	CP	_CX	191.2	189.25	25 05 29.0	21.000	111.3	39.2	62.8	100.3
Key Largo	FL			11.0	BMPH20120117AJJ	80 26 37.0	110	110	Actualidad Key Largo Fm Li		
One Step Application											
294D	650200	APP	DC_	342.0	92.75	27 33 18.0	0.130	0.0	1.6	82.1	90.7
South Beach	FL			161.9	BNPFT20030317MEY	80 22 07.0	41	46	Ace Of Hearts Disc Jockey		

Terrain database is NED 03 SEC , R= 73.215 qualifying spacings or FCC minimum spacings in KM, M= Margin in KM
 Contour distances are on direct line to and from reference station. Reference zone= East Zone, Co to 3rd adjacent.
 Ant Column: (D= DA Standard, Z= DA 73.215, N= Not DA 73.215, _= Omni), Polarization (C,H,V,E), Beamtilt(Y,N,X)
 "*"affixed to 'IN' or 'OUT' values = site inside protected contour.

Blue Highlighted Text denotes the W296AW - Mangonia Park, FL facility to be modified by this Form 349 filing. This facility need not be protected.

Yellow Highlighted Text denotes supplemental contour protection studies toward W295BJ - Jupiter, FL and APP296L1- Pompano Beach, FL (BNPL-20131113BIG) as included in **Exhibit(s) 13.6** and **13.7**. A copy of the proposed Directional Antenna Pattern has been included in **Exhibit 13.8**.

Exhibit 13.6

Contour Protection Studies Toward W295BJ - Jupiter, FL

Black Media Works, Inc.

FMCommander Single Allocation Study - 03-04-2014 - NED 03 SEC
W296AW.P's Overlaps (In= -3.18 km, Out= 0.27 km)

W296AW.P CH 296 D DA
Lat= 26 45 42.0, Lng= 80 04 42.0
0.25 kW 155.6 M HAAT, 159 M COR
Prot.= 60 dBu, Intef.= 54 dBu

W295BJ CH 295 D BLFT20101115FKT
Lat= 27 01 31.0, Lng= 80 10 43.0
0.19 kW 166 M HAAT, 169 M COR
Prot.= 60 dBu, Intef.= 54 dBu

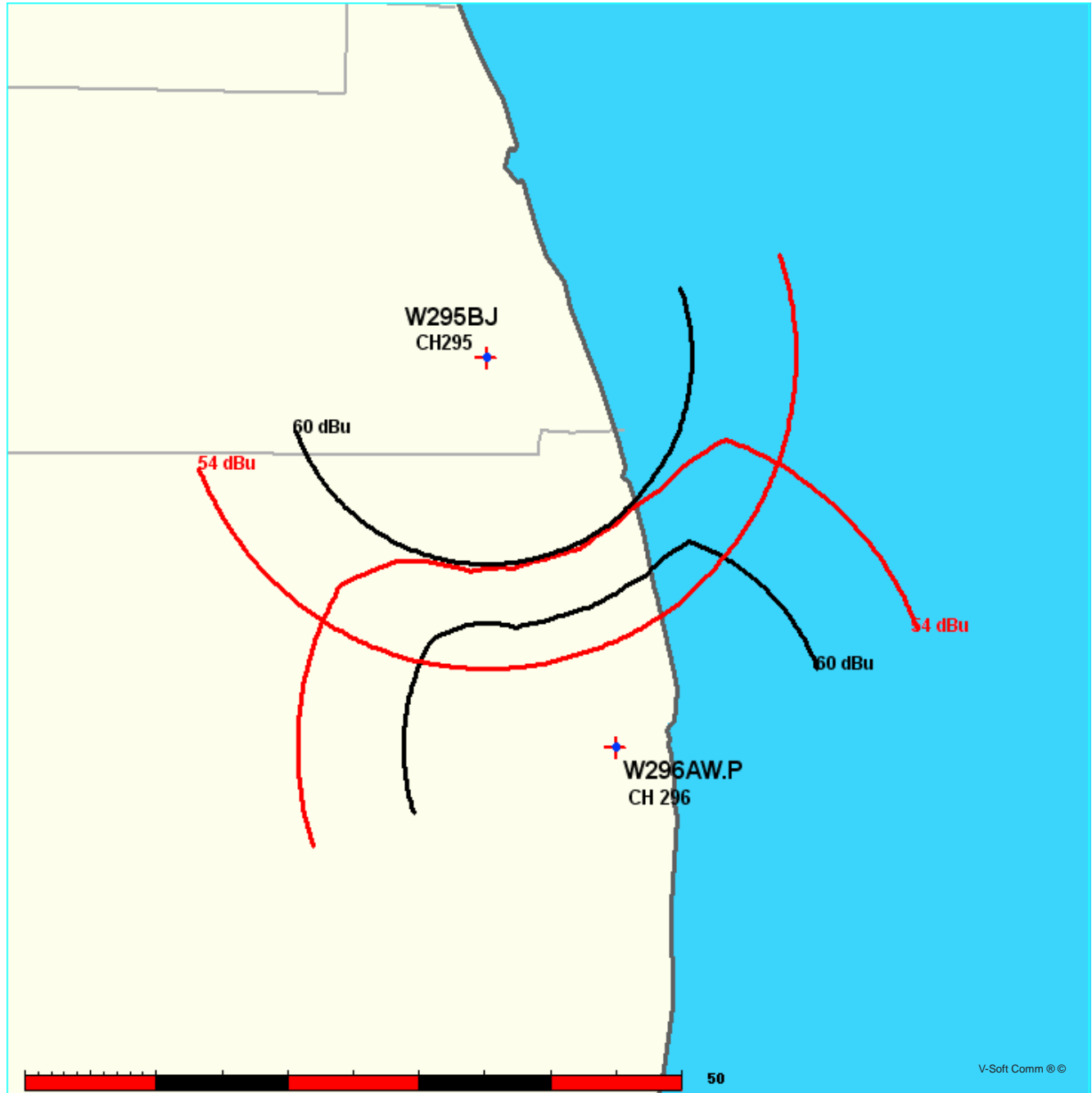


Exhibit 13.6

Contour Protection Studies Toward W295BJ - Jupiter, FL

03-04-2014

Terrain Data: NED 03 SEC

FMOver Analysis

W296AW.P

W295BJ BLFT20101115FKT

Channel = 296D
Max ERP = 0.25 kW
RCAMSL = 159 M
N. Lat. 26 45 42.0
W. Lng. 80 04 42.0
Protected
60 dBu

Channel = 295D
Max ERP = 0.19 kW
RCAMSL = 169 M
N. Lat. 27 01 31.0
W. Lng. 80 10 43.0
Interfering
54 dBu

Azimuth (degrees)	ERP (kW)	HAAT (m)	Dist (km)	Azimuth (degrees)	ERP (kW)	HAAT (m)	Dist (km)	Actual (dBu)	IX (km)
283.0	000.2500	0154.0	016.2	192.7	000.1900	0164.6	026.3	51.94	
284.0	000.2500	0154.0	016.2	192.7	000.1900	0164.6	026.0	52.14	
285.0	000.2500	0154.0	016.2	192.7	000.1900	0164.6	025.8	52.33	
286.0	000.2500	0154.0	016.2	192.6	000.1900	0164.6	025.5	52.53	
287.0	000.2500	0154.0	016.2	192.6	000.1900	0164.6	025.2	52.73	
288.0	000.2500	0154.1	016.2	192.6	000.1900	0164.6	024.9	52.92	
289.0	000.2500	0154.1	016.2	192.5	000.1900	0164.6	024.6	53.12	
290.0	000.2500	0154.1	016.2	192.4	000.1900	0164.6	024.4	53.33	
291.0	000.2500	0154.1	016.2	192.3	000.1900	0164.6	024.1	53.53	
292.0	000.2500	0154.1	016.2	192.2	000.1900	0164.6	023.8	53.73	
293.0	000.2500	0154.1	016.2	192.1	000.1900	0164.6	023.5	53.94	
294.0	000.2500	0154.1	016.2	191.9	000.1900	0164.5	023.2	54.14*	0.19
295.0	000.2500	0154.1	016.2	191.8	000.1900	0164.5	023.0	54.34*	0.46
296.0	000.2500	0154.1	016.2	191.6	000.1900	0164.5	022.7	54.55*	0.74
297.0	000.2500	0154.0	016.2	191.4	000.1900	0164.5	022.4	54.75*	1.01
298.0	000.2500	0154.0	016.2	191.2	000.1900	0164.5	022.2	54.96*	1.28
299.0	000.2500	0154.0	016.2	191.0	000.1900	0164.5	021.9	55.16*	1.55
300.0	000.2500	0154.0	016.2	190.8	000.1900	0164.5	021.6	55.37*	1.82
301.0	000.2401	0154.0	016.0	190.1	000.1900	0164.6	021.4	55.53*	2.02
302.0	000.2304	0153.9	015.8	189.3	000.1900	0164.6	021.2	55.67*	2.21
303.0	000.2209	0153.8	015.6	188.5	000.1900	0164.6	021.1	55.81*	2.38
304.0	000.2116	0153.7	015.4	187.8	000.1900	0164.6	020.9	55.94*	2.55
305.0	000.2025	0153.5	015.2	187.0	000.1900	0164.6	020.7	56.06*	2.70
306.0	000.1936	0153.6	015.0	186.2	000.1900	0164.6	020.6	56.17*	2.84
307.0	000.1849	0153.8	014.9	185.4	000.1900	0164.6	020.5	56.28*	2.98
308.0	000.1764	0154.0	014.7	184.6	000.1900	0164.6	020.3	56.38*	3.11
309.0	000.1681	0154.1	014.5	183.8	000.1900	0164.6	020.2	56.47*	3.22
310.0	000.1600	0154.2	014.3	183.0	000.1900	0164.7	020.1	56.55*	3.32
311.0	000.1494	0154.2	014.1	182.0	000.1900	0164.7	020.1	56.58*	3.36
312.0	000.1391	0154.3	013.8	181.0	000.1900	0164.7	020.1	56.61*	3.40
313.0	000.1292	0154.3	013.6	180.0	000.1900	0164.7	020.0	56.62*	3.41
314.0	000.1197	0154.3	013.3	179.0	000.1900	0164.9	020.0	56.62*	3.41
315.0	000.1106	0154.3	013.1	178.0	000.1900	0165.0	020.1	56.61*	3.40
316.0	000.1018	0154.3	012.8	177.0	000.1900	0165.1	020.1	56.58*	3.36

Exhibit 13.6

Contour Protection Studies Toward W295BJ - Jupiter, FL

Azimuth (degrees)	ERP (kW)	HAAT (m)	Dist (km)	Azimuth (degrees)	ERP (kW)	HAAT (m)	Dist (km)	Actual (dBu)	
317.0	000.0933	0154.3	012.6	176.1	000.1900	0165.1	020.2	56.53*	3.30
318.0	000.0853	0154.3	012.3	175.1	000.1900	0165.0	020.3	56.46*	3.22
319.0	000.0776	0154.3	012.0	174.2	000.1900	0165.1	020.4	56.39*	3.12
320.0	000.0702	0154.4	011.7	173.2	000.1900	0165.1	020.5	56.30*	3.01
321.0	000.0681	0154.4	011.6	172.6	000.1900	0165.2	020.4	56.33*	3.05
322.0	000.0660	0154.4	011.6	172.0	000.1900	0165.2	020.4	56.36*	3.08
323.0	000.0640	0154.5	011.5	171.4	000.1900	0165.3	020.4	56.38*	3.12
324.0	000.0620	0154.5	011.4	170.8	000.1900	0165.4	020.4	56.40*	3.14
325.0	000.0600	0154.6	011.3	170.2	000.1900	0165.4	020.4	56.41*	3.15
326.0	000.0581	0154.6	011.2	169.6	000.1900	0165.4	020.4	56.41*	3.15
327.0	000.0562	0154.6	011.1	169.0	000.1900	0165.4	020.4	56.40*	3.14
328.0	000.0543	0154.7	011.0	168.4	000.1900	0165.4	020.4	56.39*	3.13
329.0	000.0524	0154.7	010.9	167.8	000.1900	0165.4	020.4	56.38*	3.11
330.0	000.0506	0154.7	010.8	167.2	000.1900	0165.5	020.4	56.36*	3.08
331.0	000.0502	0154.8	010.8	166.7	000.1900	0165.5	020.4	56.39*	3.12
332.0	000.0497	0154.8	010.8	166.1	000.1900	0165.5	020.4	56.41*	3.15
333.0	000.0493	0154.8	010.8	165.6	000.1900	0165.5	020.3	56.42*	3.17
334.0	000.0488	0154.8	010.8	165.1	000.1900	0165.4	020.3	56.43*	3.18
335.0	000.0484	0154.8	010.7	164.6	000.1900	0165.3	020.3	56.44*	3.18
336.0	000.0480	0154.9	010.7	164.0	000.1900	0165.3	020.3	56.44*	3.19
337.0	000.0475	0154.9	010.7	163.5	000.1900	0165.3	020.3	56.44*	3.19
338.0	000.0471	0154.9	010.7	163.0	000.1900	0165.3	020.3	56.43*	3.18
339.0	000.0467	0154.9	010.6	162.4	000.1900	0165.3	020.3	56.43*	3.18
340.0	000.0462	0155.0	010.6	161.9	000.1900	0165.4	020.3	56.42*	3.17
341.0	000.0462	0155.1	010.6	161.4	000.1900	0165.4	020.3	56.43*	3.18
342.0	000.0462	0155.2	010.6	160.9	000.1900	0165.5	020.3	56.44*	3.19
343.0	000.0462	0155.3	010.6	160.3	000.1900	0165.6	020.3	56.44*	3.19
344.0	000.0462	0155.3	010.6	159.8	000.1900	0165.7	020.3	56.44*	3.19
345.0	000.0462	0155.3	010.6	159.3	000.1900	0165.8	020.3	56.43*	3.18
346.0	000.0462	0155.5	010.6	158.8	000.1900	0165.8	020.4	56.43*	3.17
347.0	000.0462	0155.7	010.6	158.3	000.1900	0165.9	020.4	56.41*	3.16
348.0	000.0462	0155.8	010.7	157.7	000.1900	0166.0	020.4	56.40*	3.14
349.0	000.0462	0155.9	010.7	157.2	000.1900	0166.1	020.4	56.38*	3.11
350.0	000.0462	0155.9	010.7	156.7	000.1900	0166.2	020.5	56.36*	3.08
351.0	000.0477	0155.8	010.7	156.2	000.1900	0166.3	020.4	56.38*	3.12
352.0	000.0493	0155.8	010.8	155.6	000.1900	0166.3	020.4	56.41*	3.15
353.0	000.0509	0155.5	010.9	155.0	000.1900	0166.3	020.4	56.42*	3.16
354.0	000.0524	0155.7	011.0	154.4	000.1900	0166.4	020.4	56.44*	3.19
355.0	000.0541	0155.7	011.1	153.8	000.1900	0166.4	020.4	56.45*	3.20
356.0	000.0557	0155.8	011.1	153.2	000.1900	0166.5	020.4	56.46*	3.22
357.0	000.0574	0155.6	011.2	152.7	000.1900	0166.6	020.4	56.45*	3.21
358.0	000.0590	0155.8	011.3	152.1	000.1900	0166.6	020.4	56.45*	3.21
359.0	000.0608	0156.2	011.4	151.4	000.1900	0166.7	020.4	56.45*	3.21
000.0	000.0625	0156.3	011.5	150.8	000.1900	0166.8	020.4	56.44*	3.19
001.0	000.0663	0156.4	011.6	150.1	000.1900	0167.0	020.4	56.49*	3.26
002.0	000.0702	0156.3	011.8	149.4	000.1900	0167.0	020.3	56.51*	3.29
003.0	000.0743	0156.3	012.0	148.7	000.1900	0167.3	020.3	56.54*	3.32

Exhibit 13.6

Contour Protection Studies Toward W295BJ - Jupiter, FL

Azimuth (degrees)	ERP (kW)	HAAT (m)	Dist (km)	Azimuth (degrees)	ERP (kW)	HAAT (m)	Dist (km)	Actual (dBu)	
004.0	000.0784	0156.7	012.1	147.9	000.1900	0167.3	020.3	56.56*	3.35
005.0	000.0827	0156.9	012.3	147.1	000.1900	0167.3	020.3	56.56*	3.35
006.0	000.0870	0156.8	012.5	146.4	000.1900	0167.3	020.3	56.54*	3.33
007.0	000.0915	0156.9	012.6	145.6	000.1900	0167.3	020.3	56.53*	3.31
008.0	000.0961	0156.4	012.7	144.9	000.1900	0167.4	020.4	56.49*	3.27
009.0	000.1008	0156.5	012.9	144.2	000.1900	0167.8	020.4	56.48*	3.25
010.0	000.1056	0156.3	013.0	143.5	000.1900	0167.9	020.5	56.43*	3.18
011.0	000.1173	0156.2	013.4	142.3	000.1900	0168.3	020.4	56.50*	3.28
012.0	000.1296	0157.0	013.7	141.1	000.1900	0168.3	020.4	56.55*	3.34
013.0	000.1425	0157.5	014.1	139.9	000.1900	0168.1	020.4	56.55*	3.35
014.0	000.1560	0157.6	014.4	138.7	000.1900	0167.7	020.4	56.53*	3.31
015.0	000.1702	0157.7	014.8	137.6	000.1900	0167.1	020.4	56.48*	3.24
016.0	000.1849	0157.7	015.1	136.4	000.1900	0167.3	020.4	56.44*	3.20
017.0	000.2003	0157.8	015.4	135.2	000.1900	0167.3	020.5	56.39*	3.13
018.0	000.2162	0157.9	015.7	134.0	000.1900	0167.3	020.6	56.32*	3.04
019.0	000.2328	0157.9	016.1	132.9	000.1900	0167.5	020.7	56.24*	2.94
020.0	000.2500	0158.1	016.4	131.7	000.1900	0167.3	020.8	56.13*	2.80
021.0	000.2500	0158.2	016.4	131.4	000.1900	0167.2	021.1	55.92*	2.53
022.0	000.2500	0158.3	016.4	131.2	000.1900	0167.0	021.4	55.70*	2.25
023.0	000.2500	0158.3	016.4	130.9	000.1900	0166.9	021.6	55.48*	1.96
024.0	000.2500	0158.4	016.4	130.7	000.1900	0166.8	021.9	55.27*	1.68
025.0	000.2500	0158.4	016.4	130.5	000.1900	0166.8	022.2	55.05*	1.41
026.0	000.2500	0158.5	016.4	130.3	000.1900	0166.7	022.5	54.84*	1.13
027.0	000.2500	0158.5	016.4	130.1	000.1900	0166.7	022.8	54.63*	0.85
028.0	000.2500	0158.5	016.4	129.9	000.1900	0166.7	023.0	54.42*	0.57
029.0	000.2500	0158.6	016.4	129.8	000.1900	0166.6	023.3	54.21*	0.29
030.0	000.2500	0158.7	016.4	129.6	000.1900	0166.7	023.6	54.00	0.00
031.0	000.2500	0158.7	016.5	129.5	000.1900	0166.7	023.9	53.80	
032.0	000.2500	0158.7	016.5	129.4	000.1900	0166.7	024.2	53.59	
033.0	000.2500	0158.7	016.5	129.3	000.1900	0166.7	024.4	53.38	
034.0	000.2500	0158.7	016.5	129.3	000.1900	0166.7	024.7	53.18	
035.0	000.2500	0158.7	016.5	129.2	000.1900	0166.7	025.0	52.97	
036.0	000.2500	0158.7	016.5	129.2	000.1900	0166.7	025.3	52.77	
037.0	000.2500	0158.8	016.5	129.1	000.1900	0166.7	025.6	52.57	
038.0	000.2500	0158.7	016.5	129.1	000.1900	0166.7	025.9	52.37	
039.0	000.2500	0158.8	016.5	129.1	000.1900	0166.7	026.2	52.17	
040.0	000.2500	0158.8	016.5	129.1	000.1900	0166.7	026.5	51.98	

Exhibit 13.6

Contour Protection Studies Toward W295BJ - Jupiter, FL

03-04-2014

Terrain Data: NED 03 SEC

FMOver Analysis

W295BJ BLFT20101115FKT

W296AW.P

Channel = 295D

Max ERP = 0.19 kW

RCAMSL = 169 M

N. Lat. 27 01 31.0

W. Lng. 80 10 43.0

Protected

60 dBu

Channel = 296D

Max ERP = 0.25 kW

RCAMSL = 159 M

N. Lat. 26 45 42.0

W. Lng. 80 04 42.0

Interfering

54 dBu

Azimuth (degrees)	ERP (kW)	HAAT (m)	Dist (km)	Azimuth (degrees)	ERP (kW)	HAAT (m)	Dist (km)	Actual (dBu)	IX (km)
101.0	000.1900	0167.4	015.7	011.8	000.1274	0156.8	026.9	49.39	
102.0	000.1900	0167.5	015.7	011.8	000.1275	0156.8	026.6	49.58	
103.0	000.1900	0167.5	015.7	011.8	000.1275	0156.8	026.3	49.76	
104.0	000.1900	0167.5	015.7	011.8	000.1272	0156.8	026.0	49.94	
105.0	000.1900	0167.5	015.7	011.8	000.1269	0156.7	025.8	50.11	
106.0	000.1900	0167.5	015.7	011.7	000.1264	0156.7	025.5	50.29	
107.0	000.1900	0167.6	015.7	011.7	000.1258	0156.7	025.2	50.45	
108.0	000.1900	0167.9	015.8	011.7	000.1255	0156.6	024.9	50.64	
109.0	000.1900	0167.8	015.7	011.6	000.1244	0156.6	024.7	50.79	
110.0	000.1900	0167.9	015.8	011.5	000.1235	0156.5	024.4	50.94	
111.0	000.1900	0167.8	015.7	011.4	000.1220	0156.4	024.1	51.09	
112.0	000.1900	0167.8	015.8	011.3	000.1207	0156.4	023.9	51.23	
113.0	000.1900	0167.7	015.7	011.1	000.1190	0156.3	023.6	51.36	
114.0	000.1900	0167.7	015.7	011.0	000.1172	0156.2	023.3	51.49	
115.0	000.1900	0167.8	015.7	010.8	000.1154	0156.1	023.1	51.62	
116.0	000.1900	0167.7	015.7	010.7	000.1132	0156.1	022.8	51.73	
117.0	000.1900	0167.5	015.7	010.4	000.1106	0156.2	022.5	51.83	
118.0	000.1900	0167.7	015.7	010.3	000.1085	0156.2	022.3	51.95	
119.0	000.1900	0167.6	015.7	010.0	000.1058	0156.3	022.0	52.04	
120.0	000.1900	0167.5	015.7	009.8	000.1045	0156.3	021.7	52.18	
121.0	000.1900	0167.5	015.7	009.5	000.1032	0156.4	021.5	52.34	
122.0	000.1900	0167.6	015.7	009.2	000.1019	0156.5	021.2	52.48	
123.0	000.1900	0167.5	015.7	008.9	000.1005	0156.5	021.0	52.62	
124.0	000.1900	0167.4	015.7	008.6	000.0989	0156.5	020.7	52.74	
125.0	000.1900	0166.8	015.7	008.2	000.0969	0156.4	020.5	52.83	
126.0	000.1900	0166.9	015.7	007.8	000.0954	0156.5	020.3	52.96	
127.0	000.1900	0167.1	015.7	007.5	000.0937	0156.7	020.0	53.09	
128.0	000.1900	0166.9	015.7	007.1	000.0918	0156.9	019.8	53.19	
129.0	000.1900	0166.7	015.7	006.6	000.0898	0156.8	019.6	53.28	
130.0	000.1900	0166.7	015.7	006.2	000.0878	0156.8	019.3	53.36	
131.0	000.1900	0166.9	015.7	005.7	000.0859	0156.7	019.1	53.45	
132.0	000.1900	0167.4	015.7	005.3	000.0840	0156.8	018.9	53.55	
133.0	000.1900	0167.4	015.7	004.8	000.0819	0156.9	018.6	53.62	

Exhibit 13.6

Contour Protection Studies Toward W295BJ - Jupiter, FL

Azimuth (degrees)	ERP (kW)	HAAT (m)	Dist (km)	Azimuth (degrees)	ERP (kW)	HAAT (m)	Dist (km)	Actual (dBu)
134.0	000.1900	0167.3	015.7	004.3	000.0795	0156.8	018.4	53.65
135.0	000.1900	0167.3	015.7	003.7	000.0772	0156.5	018.2	53.68
136.0	000.1900	0167.3	015.7	003.1	000.0747	0156.4	018.0	53.69
137.0	000.1900	0167.3	015.7	002.5	000.0723	0156.3	017.8	53.71
138.0	000.1900	0167.3	015.7	001.9	000.0698	0156.3	017.6	53.71
139.0	000.1900	0167.7	015.7	001.3	000.0674	0156.3	017.4	53.73
140.0	000.1900	0168.1	015.8	000.6	000.0649	0156.4	017.2	53.74
141.0	000.1900	0168.3	015.8	360.0	000.0624	0156.3	017.0	53.71
142.0	000.1900	0168.4	015.8	359.2	000.0612	0156.2	016.9	53.76
143.0	000.1900	0168.0	015.8	358.4	000.0598	0156.0	016.7	53.77
144.0	000.1900	0167.9	015.8	357.6	000.0584	0155.6	016.6	53.77
145.0	000.1900	0167.4	015.7	356.8	000.0570	0155.6	016.4	53.77
146.0	000.1900	0167.3	015.7	356.0	000.0556	0155.8	016.3	53.79
147.0	000.1900	0167.3	015.7	355.1	000.0542	0155.7	016.2	53.78
148.0	000.1900	0167.3	015.7	354.2	000.0528	0155.7	016.1	53.78
149.0	000.1900	0167.2	015.7	353.3	000.0514	0155.5	015.9	53.74
150.0	000.1900	0167.0	015.7	352.4	000.0499	0155.7	015.8	53.71
151.0	000.1900	0166.8	015.7	351.5	000.0485	0155.8	015.8	53.66
152.0	000.1900	0166.6	015.7	350.5	000.0470	0155.9	015.7	53.60
153.0	000.1900	0166.5	015.7	349.6	000.0462	0155.9	015.6	53.60
154.0	000.1900	0166.4	015.7	348.6	000.0462	0155.8	015.5	53.65
155.0	000.1900	0166.3	015.7	347.6	000.0462	0155.7	015.5	53.69
156.0	000.1900	0166.3	015.7	346.6	000.0462	0155.6	015.4	53.73
157.0	000.1900	0166.1	015.7	345.6	000.0462	0155.4	015.4	53.75
158.0	000.1900	0166.0	015.7	344.6	000.0462	0155.3	015.3	53.77
159.0	000.1900	0165.8	015.6	343.6	000.0462	0155.3	015.3	53.78
160.0	000.1900	0165.7	015.6	342.5	000.0462	0155.2	015.3	53.78
161.0	000.1900	0165.5	015.6	341.5	000.0462	0155.2	015.3	53.78
162.0	000.1900	0165.4	015.6	340.5	000.0462	0155.0	015.3	53.76
163.0	000.1900	0165.3	015.6	339.5	000.0464	0154.9	015.4	53.76
164.0	000.1900	0165.3	015.6	338.5	000.0469	0154.9	015.4	53.78
165.0	000.1900	0165.4	015.6	337.5	000.0473	0154.9	015.4	53.80
166.0	000.1900	0165.5	015.6	336.5	000.0478	0154.9	015.4	53.81
167.0	000.1900	0165.5	015.6	335.5	000.0482	0154.8	015.5	53.80
168.0	000.1900	0165.4	015.6	334.5	000.0486	0154.8	015.5	53.79
169.0	000.1900	0165.4	015.6	333.5	000.0491	0154.8	015.6	53.76
170.0	000.1900	0165.4	015.6	332.6	000.0495	0154.8	015.7	53.74
171.0	000.1900	0165.4	015.6	331.6	000.0499	0154.8	015.8	53.70
172.0	000.1900	0165.2	015.6	330.7	000.0503	0154.7	015.9	53.64
173.0	000.1900	0165.1	015.6	329.8	000.0510	0154.7	016.0	53.61
174.0	000.1900	0165.1	015.6	328.9	000.0526	0154.7	016.1	53.65
175.0	000.1900	0165.0	015.6	328.1	000.0542	0154.7	016.2	53.67
176.0	000.1900	0165.1	015.6	327.2	000.0558	0154.6	016.4	53.69
177.0	000.1900	0165.1	015.6	326.4	000.0573	0154.6	016.5	53.70
178.0	000.1900	0165.0	015.6	325.6	000.0589	0154.6	016.6	53.69
179.0	000.1900	0164.9	015.6	324.8	000.0604	0154.6	016.8	53.67

Exhibit 13.6

Contour Protection Studies Toward W295BJ - Jupiter, FL

Azimuth (degrees)	ERP (kW)	HAAT (m)	Dist (km)	Azimuth (degrees)	ERP (kW)	HAAT (m)	Dist (km)	Actual (dBu)
180.0	000.1900	0164.7	015.6	324.1	000.0618	0154.5	017.0	53.64
181.0	000.1900	0164.7	015.6	323.4	000.0633	0154.5	017.1	53.60
182.0	000.1900	0164.7	015.6	322.7	000.0647	0154.5	017.3	53.55
183.0	000.1900	0164.7	015.6	322.0	000.0661	0154.4	017.5	53.50
184.0	000.1900	0164.6	015.6	321.3	000.0675	0154.4	017.6	53.44
185.0	000.1900	0164.6	015.6	320.7	000.0688	0154.4	017.8	53.37
186.0	000.1900	0164.6	015.6	320.1	000.0701	0154.4	018.0	53.29
187.0	000.1900	0164.6	015.6	319.5	000.0740	0154.4	018.2	53.36
188.0	000.1900	0164.6	015.6	318.9	000.0782	0154.3	018.4	53.43
189.0	000.1900	0164.6	015.6	318.4	000.0823	0154.3	018.6	53.49
190.0	000.1900	0164.6	015.6	317.9	000.0864	0154.3	018.9	53.52
191.0	000.1900	0164.5	015.6	317.4	000.0903	0154.3	019.1	53.54
192.0	000.1900	0164.5	015.6	316.9	000.0942	0154.3	019.3	53.55
193.0	000.1900	0164.6	015.6	316.4	000.0980	0154.3	019.5	53.54
194.0	000.1900	0164.5	015.6	316.0	000.1016	0154.3	019.7	53.51
195.0	000.1900	0164.4	015.6	315.6	000.1050	0154.3	020.0	53.46
196.0	000.1900	0164.4	015.6	315.3	000.1083	0154.3	020.2	53.41
197.0	000.1900	0164.4	015.6	314.9	000.1116	0154.3	020.5	53.35
198.0	000.1900	0164.4	015.6	314.5	000.1148	0154.3	020.7	53.29
199.0	000.1900	0164.4	015.6	314.2	000.1177	0154.3	020.9	53.20
200.0	000.1900	0164.4	015.6	313.9	000.1206	0154.3	021.2	53.12
201.0	000.1900	0164.3	015.6	313.6	000.1232	0154.3	021.4	53.01
202.0	000.1900	0164.2	015.6	313.4	000.1256	0154.3	021.7	52.90
203.0	000.1900	0164.1	015.5	313.1	000.1279	0154.3	021.9	52.79
204.0	000.1900	0164.0	015.5	312.9	000.1301	0154.3	022.2	52.66
205.0	000.1900	0164.0	015.5	312.7	000.1322	0154.3	022.5	52.54
206.0	000.1900	0163.9	015.5	312.5	000.1341	0154.3	022.7	52.40
207.0	000.1900	0163.9	015.5	312.3	000.1359	0154.3	023.0	52.26
208.0	000.1900	0163.8	015.5	312.2	000.1375	0154.3	023.2	52.12
209.0	000.1900	0163.8	015.5	312.0	000.1390	0154.3	023.5	51.97
210.0	000.1900	0163.7	015.5	311.9	000.1404	0154.3	023.8	51.82
211.0	000.1900	0163.7	015.5	311.8	000.1416	0154.2	024.0	51.66
212.0	000.1900	0163.7	015.5	311.6	000.1427	0154.2	024.3	51.50
213.0	000.1900	0163.6	015.5	311.6	000.1437	0154.2	024.6	51.34
214.0	000.1900	0163.6	015.5	311.5	000.1446	0154.2	024.8	51.17
215.0	000.1900	0163.6	015.5	311.4	000.1453	0154.2	025.1	51.01
216.0	000.1900	0163.6	015.5	311.3	000.1459	0154.2	025.4	50.83
217.0	000.1900	0163.5	015.5	311.3	000.1463	0154.2	025.7	50.66
218.0	000.1900	0163.4	015.5	311.3	000.1467	0154.2	025.9	50.48
219.0	000.1900	0163.4	015.5	311.2	000.1469	0154.2	026.2	50.30
220.0	000.1900	0163.4	015.5	311.2	000.1470	0154.2	026.5	50.12

Exhibit 13.7

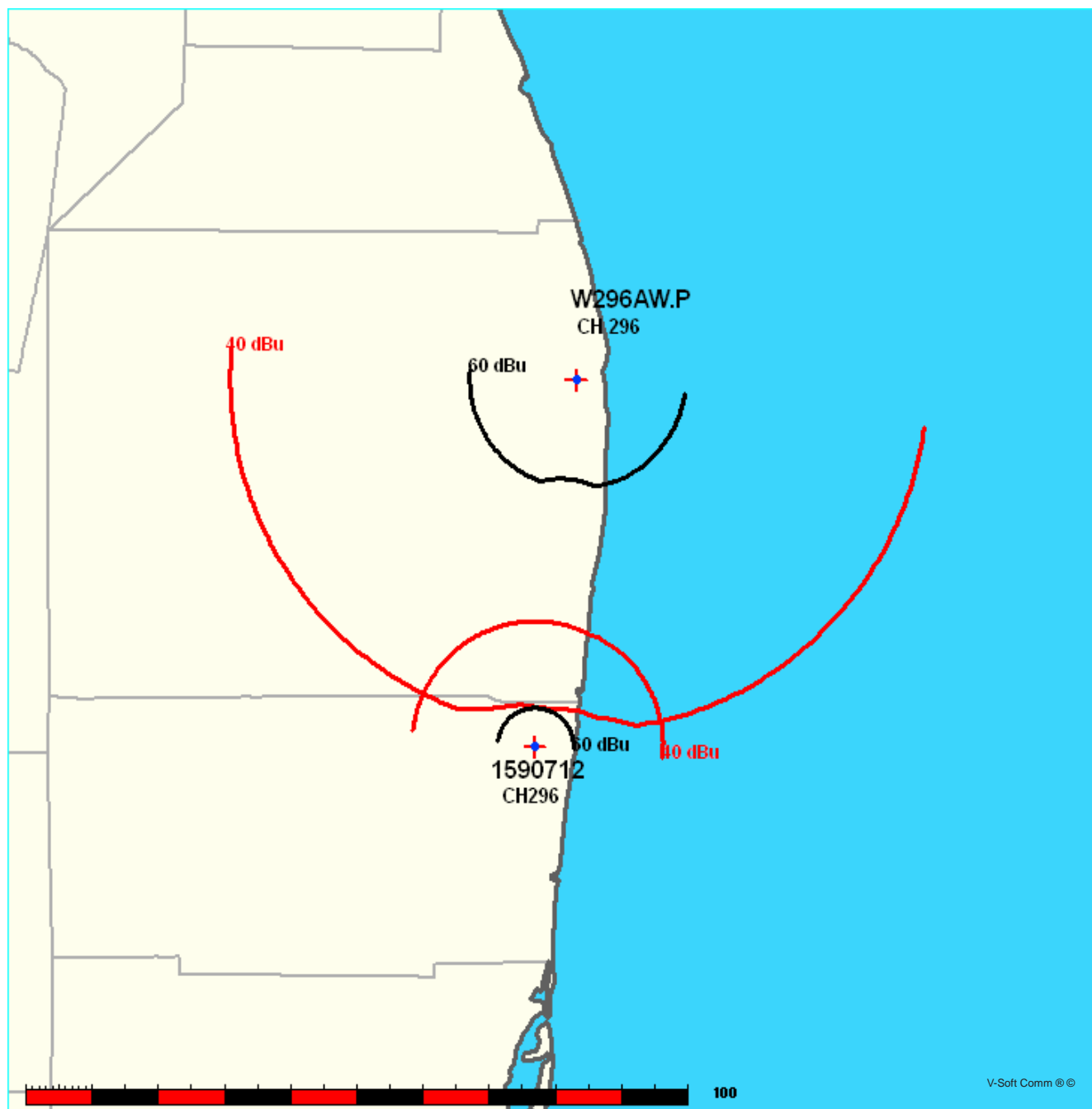
Contour Protection Studies Toward APP296L1 - Pompano Beach, FL

Black Media Works, Inc.

FMCommander Single Allocation Study - 03-04-2014 - NED 03 SEC
W296AW.P's Overlaps (In= 21.51 km, Out= 0.11 km)

W296AW.P CH 296 D DA
Lat= 26 45 42.0, Lng= 80 04 42.0
0.25 kW 155.6 M HAAT, 159 M COR
Prot.= 60 dBu, Intef.= 40 dBu

1590712 CH 296 L1 BNPL20131113BIG
Lat= 26 16 09.0, Lng= 80 08 30.0
0.1 kW 0 M HAAT, 33 M COR
Prot.= 60 dBu, Intef.= 40 dBu



MUNN-REESE, INC.

Broadcast Engineering Consultants
COLDWATER, MI 49036

Exhibit 13.7

Contour Protection Studies Toward APP296L1 - Pompano Beach, FL

03-04-2014

Terrain Data: NED 03 SEC

FMOver Analysis

W296AW.P

1590712 BNPL20131113BIG

Channel = 296D

Max ERP = 0.25 kW

RCAMSL = 159 M

N. Lat. 26 45 42.0

W. Lng. 80 04 42.0

Protected

60 dBu

Channel = 296L1

Max ERP = 0.1 kW

RCAMSL = 33 M

N. Lat. 26 16 09.0

W. Lng. 80 08 30.0

Interfering

40 dBu

Azimuth (degrees)	ERP (kW)	HAAT (m)	Dist (km)	Azimuth (degrees)	ERP (kW)	HAAT (m)	Dist (km)	Actual (dBu)	IX (km)
144.0	000.2500	0158.3	016.4	021.0	000.1000	0029.8	044.4	27.24	
145.0	000.2500	0158.2	016.4	020.8	000.1000	0029.8	044.2	27.30	
146.0	000.2500	0158.2	016.4	020.6	000.1000	0029.8	044.0	27.37	
147.0	000.2500	0158.1	016.4	020.4	000.1000	0029.8	043.7	27.43	
148.0	000.2500	0158.0	016.4	020.2	000.1000	0029.8	043.5	27.49	
149.0	000.2500	0158.0	016.4	019.9	000.1000	0029.9	043.3	27.55	
150.0	000.2500	0157.9	016.4	019.7	000.1000	0030.0	043.1	27.61	
151.0	000.2500	0157.8	016.4	019.4	000.1000	0030.0	042.9	27.67	
152.0	000.2500	0157.7	016.4	019.1	000.1000	0030.0	042.7	27.73	
153.0	000.2500	0157.6	016.4	018.9	000.1000	0030.0	042.4	27.79	
154.0	000.2500	0157.6	016.4	018.6	000.1000	0030.0	042.2	27.85	
155.0	000.2500	0157.5	016.4	018.3	000.1000	0029.8	042.1	27.91	
156.0	000.2500	0157.3	016.4	018.0	000.1000	0029.8	041.9	27.96	
157.0	000.2500	0157.2	016.4	017.7	000.1000	0029.8	041.7	28.02	
158.0	000.2500	0157.1	016.4	017.4	000.1000	0029.8	041.5	28.07	
159.0	000.2500	0157.0	016.3	017.1	000.1000	0029.8	041.3	28.12	
160.0	000.2500	0157.0	016.3	016.8	000.1000	0030.0	041.2	28.17	
161.0	000.2500	0156.9	016.3	016.5	000.1000	0030.0	041.0	28.23	
162.0	000.2500	0156.8	016.3	016.1	000.1000	0030.0	040.8	28.27	
163.0	000.2500	0156.6	016.3	015.8	000.1000	0030.0	040.7	28.32	
164.0	000.2500	0156.3	016.3	015.4	000.1000	0030.0	040.6	28.36	
165.0	000.2500	0156.3	016.3	015.1	000.1000	0030.1	040.4	28.42	
166.0	000.2500	0156.3	016.3	014.7	000.1000	0030.1	040.3	28.46	
167.0	000.2500	0155.9	016.3	014.4	000.1000	0030.1	040.2	28.50	
168.0	000.2500	0155.5	016.3	014.0	000.1000	0030.1	040.0	28.54	
169.0	000.2500	0155.2	016.2	013.6	000.1000	0030.1	039.9	28.56	
170.0	000.2500	0154.9	016.2	013.2	000.1000	0030.0	039.9	28.58	
171.0	000.2435	0154.5	016.1	012.8	000.1000	0029.9	039.9	28.57	
172.0	000.2372	0154.1	015.9	012.3	000.1000	0029.8	039.9	28.56	
173.0	000.2309	0154.2	015.8	011.9	000.1000	0029.8	039.9	28.55	
174.0	000.2247	0154.1	015.7	011.5	000.1000	0029.7	040.0	28.54	
175.0	000.2186	0154.3	015.6	011.0	000.1000	0029.7	040.0	28.54	
176.0	000.2125	0155.0	015.5	010.6	000.1000	0029.6	040.0	28.53	
177.0	000.2066	0155.2	015.4	010.2	000.1000	0029.6	040.0	28.52	

MUNN-REESE, INC.

Broadcast Engineering Consultants

COLDWATER, MI 49036

Exhibit 13.7

Contour Protection Studies Toward APP296L1 - Pompano Beach, FL

Azimuth (degrees)	ERP (kW)	HAAT (m)	Dist (km)	Azimuth (degrees)	ERP (kW)	HAAT (m)	Dist (km)	Actual (dBu)
178.0	000.2007	0155.6	015.3	009.8	000.1000	0029.4	040.1	28.51
179.0	000.1949	0155.5	015.2	009.4	000.1000	0029.4	040.1	28.49
180.0	000.1892	0155.4	015.0	009.0	000.1000	0029.4	040.2	28.46
181.0	000.1892	0155.4	015.0	008.6	000.1000	0029.4	040.2	28.48
182.0	000.1892	0155.3	015.0	008.3	000.1000	0029.3	040.1	28.49
183.0	000.1892	0155.2	015.0	007.9	000.1000	0029.3	040.1	28.49
184.0	000.1892	0155.2	015.0	007.5	000.1000	0029.3	040.1	28.50
185.0	000.1892	0155.3	015.0	007.1	000.1000	0029.4	040.1	28.50
186.0	000.1892	0155.2	015.0	006.8	000.1000	0029.3	040.1	28.50
187.0	000.1892	0155.2	015.0	006.4	000.1000	0029.3	040.1	28.50
188.0	000.1892	0155.1	015.0	006.0	000.1000	0029.3	040.1	28.50
189.0	000.1892	0155.0	015.0	005.6	000.1000	0029.3	040.1	28.49
190.0	000.1892	0154.9	015.0	005.3	000.1000	0029.3	040.1	28.49
191.0	000.1949	0154.9	015.1	004.9	000.1000	0029.3	040.0	28.52
192.0	000.2007	0154.9	015.3	004.5	000.1000	0029.3	040.0	28.54
193.0	000.2066	0154.9	015.4	004.1	000.1000	0029.3	039.9	28.57
194.0	000.2125	0154.8	015.5	003.7	000.1000	0029.2	039.8	28.59
195.0	000.2186	0154.8	015.6	003.3	000.1000	0029.1	039.7	28.61
196.0	000.2247	0154.7	015.7	002.8	000.1000	0029.0	039.7	28.63
197.0	000.2309	0154.7	015.8	002.4	000.1000	0028.9	039.6	28.64
198.0	000.2372	0154.6	016.0	002.0	000.1000	0028.9	039.6	28.66
199.0	000.2435	0154.5	016.1	001.5	000.1000	0029.0	039.6	28.66
200.0	000.2500	0154.5	016.2	001.1	000.1000	0029.0	039.6	28.67
201.0	000.2500	0154.5	016.2	000.7	000.1000	0028.9	039.6	28.64
202.0	000.2500	0154.5	016.2	000.3	000.1000	0028.9	039.8	28.61
203.0	000.2500	0154.4	016.2	360.0	000.1000	0028.9	039.9	28.58
204.0	000.2500	0154.4	016.2	359.6	000.1000	0028.9	040.0	28.54
205.0	000.2500	0154.4	016.2	359.2	000.1000	0028.8	040.1	28.50
206.0	000.2500	0154.4	016.2	358.9	000.1000	0028.8	040.2	28.46
207.0	000.2500	0154.4	016.2	358.5	000.1000	0028.8	040.4	28.42
208.0	000.2500	0154.3	016.2	358.2	000.1000	0028.8	040.5	28.38
209.0	000.2500	0154.3	016.2	357.8	000.1000	0028.8	040.6	28.33
210.0	000.2500	0154.3	016.2	357.5	000.1000	0028.8	040.8	28.28
211.0	000.2500	0154.2	016.2	357.2	000.1000	0028.8	040.9	28.24
212.0	000.2500	0154.2	016.2	356.8	000.1000	0028.7	041.1	28.19
213.0	000.2500	0154.2	016.2	356.5	000.1000	0028.7	041.3	28.14
214.0	000.2500	0154.2	016.2	356.2	000.1000	0028.7	041.4	28.09
215.0	000.2500	0154.2	016.2	355.9	000.1000	0028.7	041.6	28.03
216.0	000.2500	0154.2	016.2	355.6	000.1000	0028.7	041.8	27.98
217.0	000.2500	0154.2	016.2	355.3	000.1000	0028.6	042.0	27.93
218.0	000.2500	0154.2	016.2	355.0	000.1000	0028.6	042.2	27.87
219.0	000.2500	0154.1	016.2	354.7	000.1000	0028.6	042.4	27.81
220.0	000.2500	0154.1	016.2	354.5	000.1000	0028.6	042.6	27.76
221.0	000.2500	0154.1	016.2	354.2	000.1000	0028.6	042.8	27.70
222.0	000.2500	0154.1	016.2	354.0	000.1000	0028.6	043.0	27.64
223.0	000.2500	0154.1	016.2	353.7	000.1000	0028.6	043.2	27.58
224.0	000.2500	0154.1	016.2	353.5	000.1000	0028.6	043.4	27.52

Exhibit 13.7

Contour Protection Studies Toward APP296L1 - Pompano Beach, FL

03-04-2014

Terrain Data: NED 03 SEC

FMOver Analysis

1590712 BNPL20131113BIG

W296AW.P

Channel = 296L1

Max ERP = 0.1 kW

RCAMSL = 33 M

N. Lat. 26 16 09.0

W. Lng. 80 08 30.0

Protected

60 dBu

Channel = 296D

Max ERP = 0.25 kW

RCAMSL = 159 M

N. Lat. 26 45 42.0

W. Lng. 80 04 42.0

Interfering

40 dBu

Azimuth (degrees)	ERP (kW)	HAAT (m)	Dist (km)	Azimuth (degrees)	ERP (kW)	HAAT (m)	Dist (km)	Actual (dBu)	IX (km)
322.0	000.1000	0029.0	005.6	191.0	000.1949	0154.9	051.3	39.39	
323.0	000.1000	0029.0	005.6	190.9	000.1945	0154.9	051.2	39.40	
324.0	000.1000	0029.0	005.6	190.9	000.1941	0154.9	051.1	39.42	
325.0	000.1000	0029.0	005.6	190.8	000.1937	0154.9	051.0	39.44	
326.0	000.1000	0028.9	005.6	190.7	000.1932	0154.9	051.0	39.46	
327.0	000.1000	0028.9	005.6	190.6	000.1928	0154.9	050.9	39.47	
328.0	000.1000	0028.8	005.6	190.5	000.1923	0154.9	050.8	39.49	
329.0	000.1000	0028.8	005.6	190.5	000.1918	0154.9	050.8	39.51	
330.0	000.1000	0028.7	005.6	190.4	000.1914	0154.9	050.7	39.52	
331.0	000.1000	0028.7	005.6	190.3	000.1909	0154.9	050.6	39.53	
332.0	000.1000	0028.7	005.6	190.2	000.1904	0154.9	050.6	39.55	
333.0	000.1000	0028.7	005.6	190.1	000.1899	0154.9	050.5	39.56	
334.0	000.1000	0028.7	005.6	190.0	000.1894	0154.9	050.5	39.57	
335.0	000.1000	0028.6	005.6	189.9	000.1892	0154.9	050.4	39.59	
336.0	000.1000	0028.6	005.6	189.8	000.1892	0154.9	050.3	39.61	
337.0	000.1000	0028.5	005.6	189.7	000.1892	0154.9	050.3	39.63	
338.0	000.1000	0028.5	005.6	189.7	000.1892	0155.0	050.2	39.65	
339.0	000.1000	0028.6	005.6	189.6	000.1892	0155.0	050.2	39.67	
340.0	000.1000	0028.6	005.6	189.5	000.1892	0155.0	050.1	39.69	
341.0	000.1000	0028.5	005.6	189.4	000.1892	0155.0	050.1	39.71	
342.0	000.1000	0028.4	005.6	189.3	000.1892	0155.0	050.0	39.73	
343.0	000.1000	0028.4	005.6	189.2	000.1892	0155.0	050.0	39.75	
344.0	000.1000	0028.4	005.6	189.1	000.1892	0155.0	050.0	39.76	
345.0	000.1000	0028.4	005.6	189.0	000.1892	0155.0	049.9	39.78	
346.0	000.1000	0028.4	005.6	188.9	000.1892	0155.0	049.9	39.79	
347.0	000.1000	0028.5	005.6	188.7	000.1892	0155.0	049.8	39.81	
348.0	000.1000	0028.5	005.6	188.6	000.1892	0155.0	049.8	39.82	
349.0	000.1000	0028.5	005.6	188.5	000.1892	0155.0	049.8	39.83	
350.0	000.1000	0028.5	005.6	188.4	000.1892	0155.0	049.7	39.85	
351.0	000.1000	0028.5	005.6	188.3	000.1892	0155.0	049.7	39.86	
352.0	000.1000	0028.6	005.6	188.2	000.1892	0155.0	049.7	39.87	
353.0	000.1000	0028.6	005.6	188.1	000.1892	0155.1	049.7	39.88	
354.0	000.1000	0028.6	005.6	188.0	000.1892	0155.1	049.6	39.89	

MUNN-REESE, INC.

Broadcast Engineering Consultants
COLDWATER, MI 49036

Exhibit 13.7

Contour Protection Studies Toward APP296L1 - Pompano Beach, FL

Azimuth (degrees)	ERP (kW)	HAAT (m)	Dist (km)	Azimuth (degrees)	ERP (kW)	HAAT (m)	Dist (km)	Actual (dBu)
355.0	000.1000	0028.6	005.6	187.9	000.1892	0155.1	049.6	39.90
356.0	000.1000	0028.7	005.6	187.8	000.1892	0155.1	049.6	39.91
357.0	000.1000	0028.8	005.6	187.7	000.1892	0155.1	049.6	39.92
358.0	000.1000	0028.8	005.6	187.5	000.1892	0155.1	049.6	39.93
359.0	000.1000	0028.8	005.6	187.4	000.1892	0155.1	049.5	39.93
000.0	000.1000	0028.9	005.6	187.3	000.1892	0155.1	049.5	39.94
001.0	000.1000	0028.9	005.6	187.2	000.1892	0155.2	049.5	39.94
002.0	000.1000	0028.9	005.6	187.1	000.1892	0155.2	049.5	39.95
003.0	000.1000	0029.0	005.6	187.0	000.1892	0155.2	049.5	39.95
004.0	000.1000	0029.3	005.6	186.9	000.1892	0155.2	049.5	39.95
005.0	000.1000	0029.3	005.6	186.8	000.1892	0155.2	049.5	39.96
006.0	000.1000	0029.3	005.6	186.6	000.1892	0155.2	049.5	39.96
007.0	000.1000	0029.4	005.6	186.5	000.1892	0155.2	049.5	39.96
008.0	000.1000	0029.3	005.6	186.4	000.1892	0155.2	049.5	39.96
009.0	000.1000	0029.4	005.6	186.3	000.1892	0155.2	049.5	39.96
010.0	000.1000	0029.5	005.6	186.2	000.1892	0155.2	049.5	39.95
011.0	000.1000	0029.7	005.6	186.1	000.1892	0155.2	049.5	39.95
012.0	000.1000	0029.8	005.6	186.0	000.1892	0155.2	049.5	39.95
013.0	000.1000	0030.0	005.6	185.8	000.1892	0155.2	049.5	39.94
014.0	000.1000	0030.1	005.6	185.7	000.1892	0155.2	049.5	39.94
015.0	000.1000	0030.1	005.6	185.6	000.1892	0155.2	049.5	39.93
016.0	000.1000	0030.0	005.6	185.5	000.1892	0155.2	049.6	39.93
017.0	000.1000	0029.9	005.6	185.4	000.1892	0155.2	049.6	39.92
018.0	000.1000	0029.8	005.6	185.3	000.1892	0155.2	049.6	39.91
019.0	000.1000	0030.0	005.6	185.2	000.1892	0155.2	049.6	39.90
020.0	000.1000	0029.8	005.6	185.1	000.1892	0155.3	049.7	39.89
021.0	000.1000	0029.8	005.6	185.0	000.1892	0155.3	049.7	39.88
022.0	000.1000	0029.9	005.6	184.8	000.1892	0155.3	049.7	39.87
023.0	000.1000	0030.0	005.6	184.7	000.1892	0155.3	049.7	39.86
024.0	000.1000	0030.0	005.6	184.6	000.1892	0155.3	049.8	39.85
025.0	000.1000	0029.7	005.6	184.5	000.1892	0155.3	049.8	39.84
026.0	000.1000	0029.9	005.6	184.4	000.1892	0155.3	049.8	39.82
027.0	000.1000	0029.9	005.6	184.3	000.1892	0155.3	049.9	39.81
028.0	000.1000	0030.2	005.7	184.2	000.1892	0155.2	049.9	39.80
029.0	000.1000	0030.3	005.7	184.1	000.1892	0155.2	049.9	39.78
030.0	000.1000	0030.5	005.7	184.0	000.1892	0155.2	050.0	39.77
031.0	000.1000	0030.8	005.7	183.9	000.1892	0155.2	050.0	39.76
032.0	000.1000	0030.7	005.7	183.8	000.1892	0155.2	050.0	39.74
033.0	000.1000	0030.8	005.7	183.7	000.1892	0155.2	050.1	39.73
034.0	000.1000	0030.7	005.7	183.6	000.1892	0155.2	050.1	39.70
035.0	000.1000	0030.6	005.7	183.5	000.1892	0155.2	050.2	39.68
036.0	000.1000	0030.6	005.7	183.4	000.1892	0155.2	050.2	39.66
037.0	000.1000	0030.8	005.7	183.3	000.1892	0155.2	050.3	39.64
038.0	000.1000	0030.8	005.7	183.2	000.1892	0155.2	050.3	39.63
039.0	000.1000	0031.0	005.7	183.1	000.1892	0155.2	050.4	39.61
040.0	000.1000	0031.1	005.7	183.0	000.1892	0155.2	050.4	39.59

Exhibit 13.8

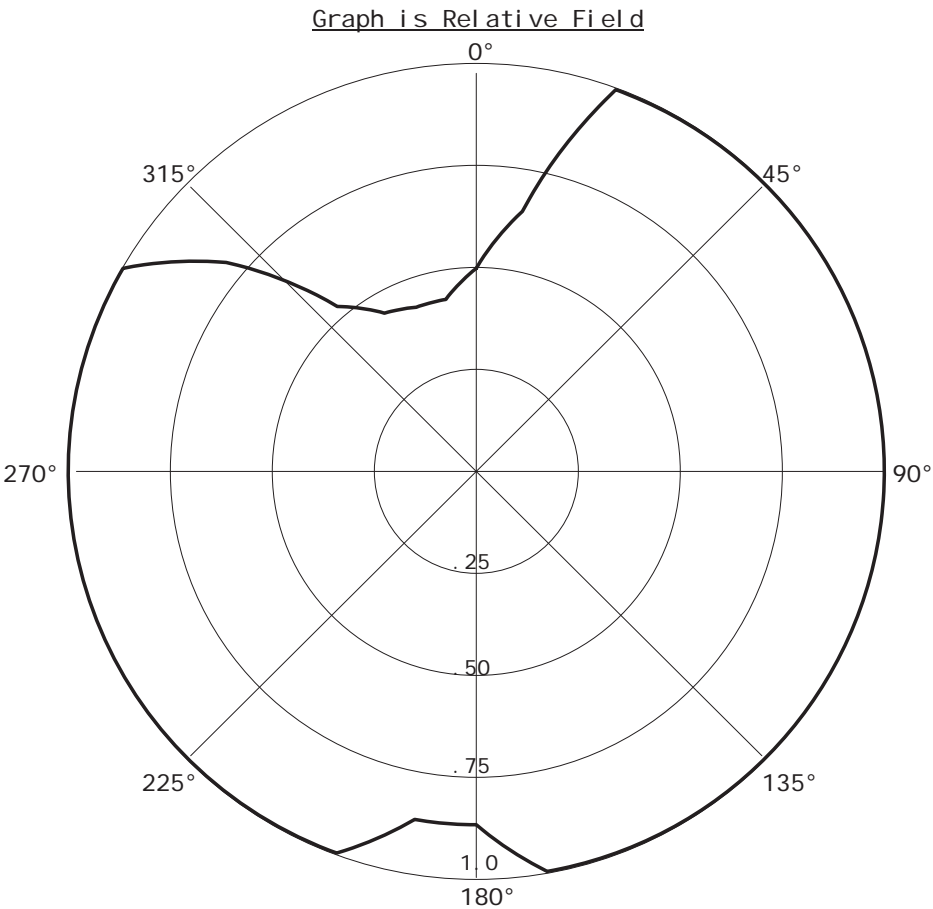
Proposed Directional Antenna Information

W296AW. P

03-04-2014

RMS(V)= .922

Azi	Field	dBk	kW
000	0.500	-12.041	0.063
010	0.650	-09.762	0.106
020	1.000	-06.021	0.250
030	1.000	-06.021	0.250
040	1.000	-06.021	0.250
050	1.000	-06.021	0.250
060	1.000	-06.021	0.250
070	1.000	-06.021	0.250
080	1.000	-06.021	0.250
090	1.000	-06.021	0.250
100	1.000	-06.021	0.250
110	1.000	-06.021	0.250
120	1.000	-06.021	0.250
130	1.000	-06.021	0.250
140	1.000	-06.021	0.250
150	1.000	-06.021	0.250
160	1.000	-06.021	0.250
170	1.000	-06.021	0.250
180	0.870	-07.230	0.189
190	0.870	-07.230	0.189
200	1.000	-06.021	0.250
210	1.000	-06.021	0.250
220	1.000	-06.021	0.250
230	1.000	-06.021	0.250
240	1.000	-06.021	0.250
250	1.000	-06.021	0.250
260	1.000	-06.021	0.250
270	1.000	-06.021	0.250
280	1.000	-06.021	0.250
290	1.000	-06.021	0.250
300	1.000	-06.021	0.250
310	0.800	-07.959	0.160
320	0.530	-11.535	0.070
330	0.450	-12.956	0.051
340	0.430	-13.351	0.046
350	0.430	-13.351	0.046



The antenna proposed in this application will be mounted in accordance with specific instructions provided by the antenna manufacturer. The antenna will be tested by the manufacturer using the type of mounting which will be employed in the field.

The directional antenna will be mounted on the tower which is of uniform cross section. No other antennas of any type are or will be mounted on the same tower level as the directional antenna.

No antenna is or will be mounted within any vertical or horizontal distance specified by the antenna manufacturer as being necessary for proper operation of the directional antenna. The antenna will be assembled under the supervision of a qualified engineer, who will provide the required certification. This statement will certify that the antenna has been installed pursuant to the manufacturer's instructions. Also upon completion of antenna construction, a statement from a licensed surveyor will be submitted with the application for license certifying the antenna has been installed in the proper orientation.

The directional antenna pattern will be produced by means of parasitic elements and/or reflective panels adjusted to produce the required pattern.

The antenna pattern will be measured by the manufacturer on the test range, and the measurement results will be supplied to the Commission at the time Form 350-FM is filed covering the construction.