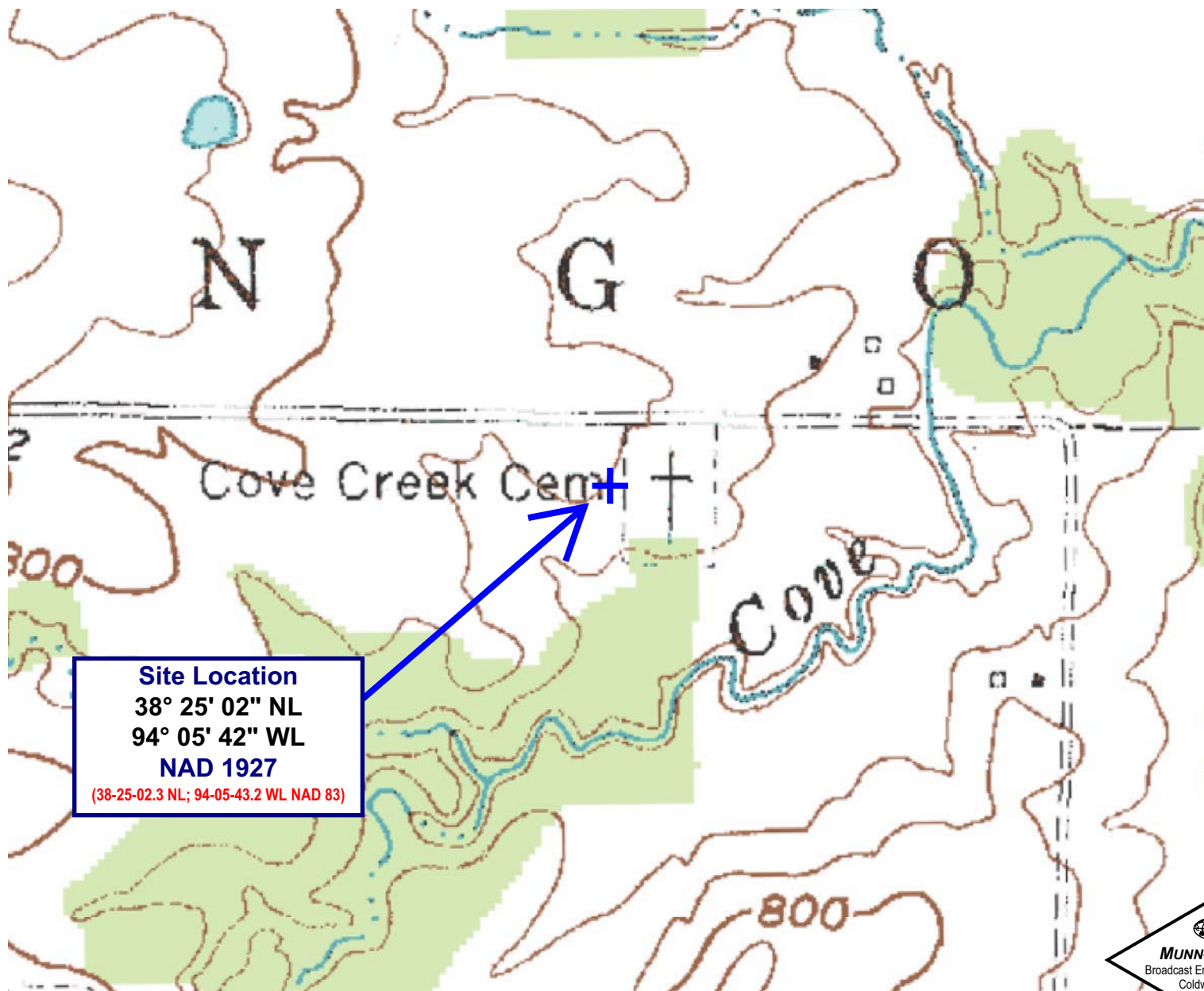


**Exhibit 13.1**  
**USGS Topographic Map of Site**

USGS - The National Map



**Exhibit 13.2**  
**USGS Photograph of Site**

USGS - The National Map



## Vertical Plan of Antenna System

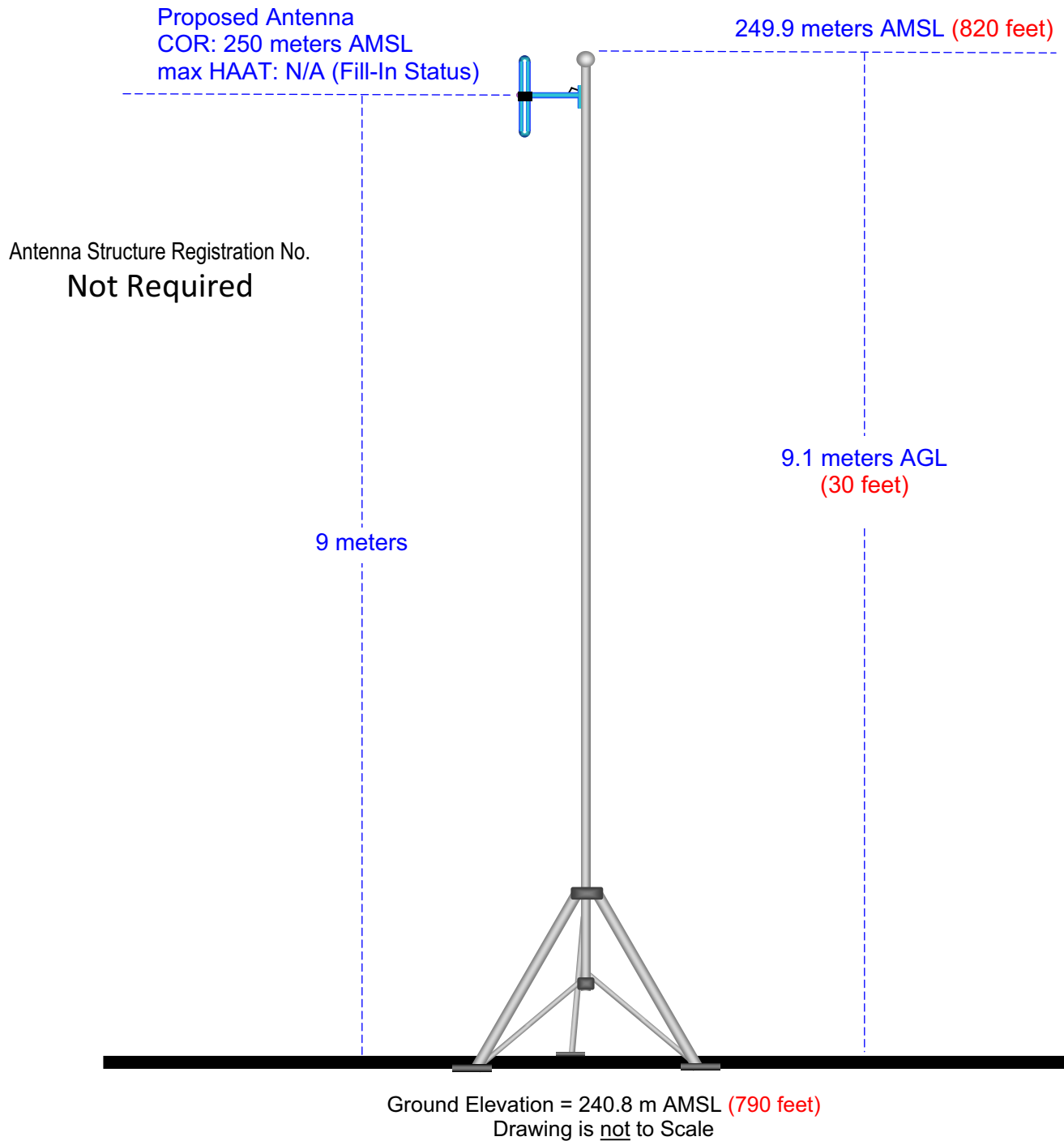
The site is located 0.7 km east of the “+” intersection of State Highway Bb and Cove Creek Road, Mayesburg Township, Bates County, Missouri.

Site Location (NAD 27)

NL: 38° 25' 02"

WL: 94° 05' 42"

(38-25-02.3 NL; 94-05-43.2 WL NAD 83)



**MUNN-REESE, INC.**  
Broadcast Engineering Consultants  
Coldwater, MI 49036



CH290D.P  
Proposed Operation  
Latitude: 38-25-02 N  
Longitude: 094-05-42 W  
ERP: 0.25 kW  
Channel: 290  
Frequency: 105.9 MHz  
AMSL Height: 250.0 m  
Horiz. Pattern: Omni  
Vert. Pattern: No  
Prop Model: None

60 dBu Contour  
Total Population: 574  
Total Area: 158 sq. km

K288GF.L  
BLFT-20110607AAS  
Latitude: 38-26-08 N  
Longitude: 093-56-09 W  
ERP: 0.25 kW  
Channel: 288  
Frequency: 105.5 MHz  
AMSL Height: 241.0 m  
Horiz. Pattern: Omni  
Vert. Pattern: No  
Prop Model: None

60 dBu Contour  
Total Population: 922  
Total Area: 158 sq. km

## Exhibit 13.4 Present vs. Proposed Service Contour Study

Terrain

215

306 m

USGS 03 SEC terrain database  
U.S. Census 2010 PL database

*Present 60 dBu F(50:50)*

*Proposed 60 dBu F(50:50)*

CH290D.P  
+

K288GF.L  
Hartwell

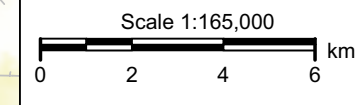
Urich

Creighton

Blairstown

Chillicothe

Clinton





Terrain  
154 412 m

USGS 03 SEC terrain database  
U.S. Census 2010 PL database

## Exhibit 13.5 Proposed vs. Primary Service Contour Study

**KLRQ.L**  
BMLED20030926AQB  
Latitude: 38-28-27 N  
Longitude: 093-30-28 W  
ERP: 100.00 kW  
Channel: 241  
Frequency: 96.1 MHz  
AMSL Height: 560.0 m  
Horiz. Pattern: Omni  
Vert. Pattern: No  
Prop Model: None

**CH290D.P**  
Proposed Operation  
Latitude: 38-25-02 N  
Longitude: 094-05-42 W  
ERP: 0.25 kW  
Channel: 290  
Frequency: 105.9 MHz  
AMSL Height: 250.0 m  
Horiz. Pattern: Omni  
Vert. Pattern: No  
Prop Model: None

Scale 1:750,000  
0 10 20 30 km

# Exhibit 13.6

## Tabulation of Proposed Translator Allocation

Alpine Broadcasting Corporation											
Average Protected F(50-50)= 7.09 km											
Omni-directional											
REFERENCE	CH#	290D	-	105.9	MHz,	Pwr= 0.25 kW,	HAAT= -2.8 M,	COR= 250 M	DISPLAY DATES		
38 25 02.0 N.									DATA	06-05-11	
94 05 42.0 W.									SEARCH	06-07-11	
CH	CALL	TYPE	ANT	AZI	DIST	LAT	PWR(kw)	INT(km)	PRO(km)	*IN*	*OUT*
CITY	STATE			<--	FILE #	LNG	HAAT(M)	COR(M)	LICENSEE	(Overlap in km)	
290C1 KLZR	LIC _CN			300.9	136.5	39 02 21.0	100.000	164.7	66.2	-35.5*<	46.4
Lawrence	KS			120.1	BLH19871119KC	95 26 59.0	236	527	Great Plains Media, Inc.		
289C2 KKKX	LIC NCX			56.6	69.6	38 45 34.0	38.000	69.7	45.8	-7.3*<	13.6
Knob Noster	MO			237.0	BMLH20060829BHP	93 25 32.0	136	381	Double O Missouri Corporat		
291D 648008	APP _C_			262.8	22.4	38 23 30.0	0.250	13.5	9.7	1.9	2.6
Adrian	MO			82.6	BNPFT20030317BSU	94 21 00.0	54	313	Covenant Network		
237C3 KDKD-FM	LIC _CX			108.2	16.2	38 22 18.0	14.500	39.9	35.9	11.5R	4.7M
Clinton	MO			288.3	BLH20040701ADS	93 55 06.0	132	367	Clinton License Co, LLC		
288D K288GF	LIC _V_			81.6	14.0	38 26 08.0	0.250	1.1	7.1	5.8	5.8
Clinton	MO			261.7	BLFT20110607AAS	93 56 09.0	241	Alpine Broadcasting Corpor			
290C2 KGBX-FM	LIC _CN			146.2	149.7	37 17 41.0	38.000	135.0	52.7	7.7	73.2
Nixa	MO			326.8	BLH19940408KA	93 09 10.0	170	571	Clear Channel Broadcasting		
293C1 WDAF-FM	LIC _CX			335.2	80.3	39 04 24.0	100.000	9.8	70.8	63.5	8.4
Liberty	MO			155.0	BMLH20040802BEU	94 29 06.0	299	565	Entercom Kansas City Licen		
291C1 KOQL	LIC NCN			74.0	138.9	38 45 01.0	69.000	98.5	67.5	33.0	60.9
Ashland	MO			255.0	BLH19981125KG	92 33 31.0	292	519	Cumulus Licensing LLC		
From Channel 291C2 per D91-181											
288A KESM-FM	LIC _CN			173.5	61.8	37 51 51.0	6.000	2.5	25.1	52.3	35.7
El Dorado Springs	MO			353.5	BMLH19921014KA	94 00 54.0	57	319	wildwood Communications, I		
293D 632176	APP DV_			199.6	63.5	37 52 45.0	0.100	0.7	5.6	55.7	56.7
Nevada	MO			19.4	BNPFT20030310BGD	94 20 15.0	13	258	Full Smile, Inc.		
292D 648020	APP _C_			188.7	74.0	37 45 33.9	0.250	1.1	12.1	65.8	60.8
Nevada	MO			8.6	BNPFT20030317IMZ	94 13 21.2	73	335	Radio Assist Ministry, Inc		
290A KULH	LIC _CN			21.2	177.8	39 54 25.0	6.000	87.2	28.7	83.6	125.4
Wheeling	MO			201.7	BLH19990510KD	93 20 28.0	100	334	Resources Management Unlim		
288D 643324	APP _C_			318.4	101.7	39 05 55.0	0.140	0.8	12.9	93.8	87.7
Bonner Springs	KS			137.9	BNPFT20030317FPT	94 52 42.1	125	395	Radio Assist Ministry, Inc		
288C1 KKJO-FM	LIC _CN			330.6	165.3	39 42 35.0	100.000	10.4	73.9	147.8	90.3
St. Joseph	MO			150.1	BLH20000509AAQ	95 02 33.0	299	588	Eagle Communications, Inc.		
288D 643341	APP _C_			279.2	106.1	38 33 51.0	0.115	0.8	12.6	98.3	92.5
Ottawa	KS			98.5	BNPFT20030317FYR	95 18 00.1	138	430	Radio Assist Ministry, Inc		

Terrain database is USGS 03 SEC , R= 73.215 qualifying spacings or FCC minimum spacings in KM, M= Margin in KM  
 Contour distances are on direct line to and from reference station. Reference zone= West Zone, Co to 3rd adjacent.  
 Ant Column: (D= DA Standard, Z= DA 73.215, N= Not DA 73.215, \_= Omni), Polarization (C,H,V,E), Beamtilt(Y,N,X)  
 "\*"affixed to 'IN' or 'OUT' values = site inside protected contour.  
 < = Contour Overlap

Yellow Highlighted Text denotes supplemental contour protection studies toward APP291D - Adrian, MO, Application File No. BNPFT-20030317BSU. Protection toward APP291D has been included in **Exhibit 13.7**.

Blue Highlighted text denotes the K288GF facility to be modified by this minor change to CH290D proposal. This facility need not be protected.

## Exhibit 13.7

### Contour Protection Studies Toward CH291D - Adrian, MO

Alpine Broadcasting Corporation

FMCommander Single Allocation Study - 06-07-2011 - USGS 03 SEC  
CH290D.P's Overlaps (In= 1.85 km, Out= 2.59 km)

CH290D.P CH 290 D

Lat= 38 25 02.0, Lng= 94 05 42.0

0.25 kW -2.8 M HAAT, 250 M COR

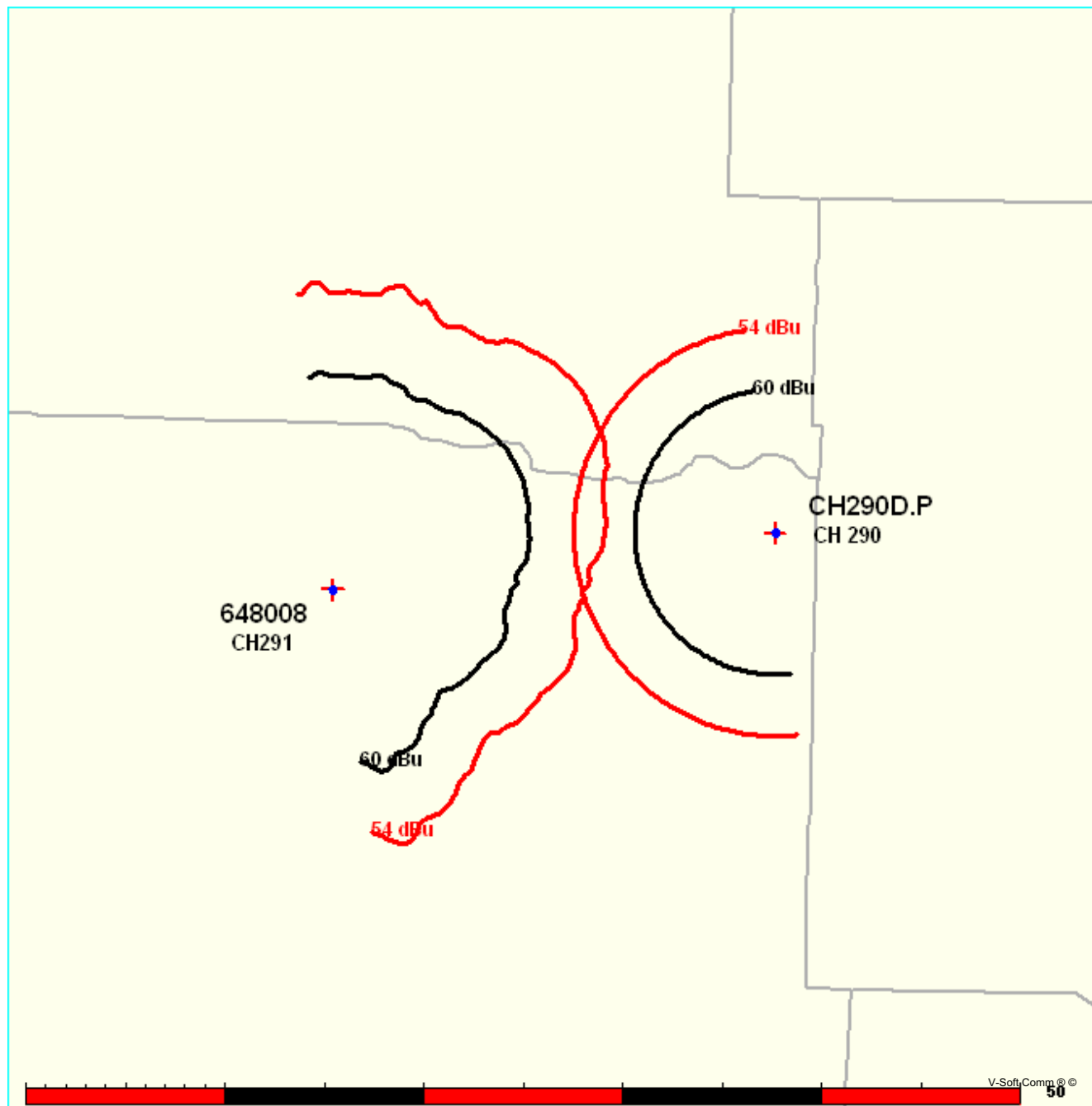
Prot.= 60 dBu, Intef.= 54 dBu

648008 CH 291 D BNPFT20030317BSU

Lat= 38 23 30.0, Lng= 94 21 00.0

0.25 kW 53.6 M HAAT, 313 M COR

Prot.= 60 dBu, Intef.= 54 dBu



**Munn-Reese, Inc.**

Broadcast Engineering Consultants

Coldwater, MI 49036

## Exhibit 13.7

### Contour Protection Studies Toward CH291D - Adrian, MO

---

06-07-2011

Terrain Data: USGS 03 SEC

FMOver Analysis

CH290D.P

648008 BNPFT20030317BSU

Channel = 290D  
Max ERP = 0.25 kW  
RCAMSL = 250 M  
N. Lat. 38 25 02.0  
W. Lng. 94 05 42.0  
Protected  
60 dBu

Channel = 291D  
Max ERP = 0.25 kW  
RCAMSL = 313 M  
N. Lat. 38 23 30.0  
W. Lng. 94 21 00.0  
Interfering  
54 dBu

Azimuth (degrees)	ERP (kW)	HAAT (m)	Dist (km)	Azimuth (degrees)	ERP (kW)	HAAT (m)	Dist (km)	Actual (dBu)	IX (km)
220.0	000.2500	-0026.3	007.1	098.3	000.2500	0044.4	017.9	47.98	
221.0	000.2500	-0026.2	007.1	098.1	000.2500	0044.4	017.8	48.07	
222.0	000.2500	-0025.7	007.1	097.9	000.2500	0044.4	017.7	48.15	
223.0	000.2500	-0025.6	007.1	097.6	000.2500	0044.4	017.6	48.24	
224.0	000.2500	-0025.9	007.1	097.4	000.2500	0044.4	017.5	48.33	
225.0	000.2500	-0026.2	007.1	097.2	000.2500	0044.4	017.4	48.42	
226.0	000.2500	-0026.3	007.1	096.9	000.2500	0044.5	017.3	48.52	
227.0	000.2500	-0026.1	007.1	096.6	000.2500	0044.5	017.2	48.61	
228.0	000.2500	-0025.5	007.1	096.4	000.2500	0044.6	017.1	48.70	
229.0	000.2500	-0024.8	007.1	096.1	000.2500	0044.7	017.0	48.80	
230.0	000.2500	-0023.8	007.1	095.8	000.2500	0044.9	016.9	48.91	
231.0	000.2500	-0022.8	007.1	095.5	000.2500	0045.1	016.8	49.04	
232.0	000.2500	-0022.0	007.1	095.2	000.2500	0045.3	016.7	49.15	
233.0	000.2500	-0021.0	007.1	094.9	000.2500	0045.5	016.6	49.27	
234.0	000.2500	-0019.5	007.1	094.6	000.2500	0045.6	016.6	49.36	
235.0	000.2500	-0017.8	007.1	094.2	000.2500	0045.7	016.5	49.45	
236.0	000.2500	-0015.4	007.1	093.9	000.2500	0045.9	016.4	49.55	
237.0	000.2500	-0015.6	007.1	093.5	000.2500	0046.1	016.3	49.66	
238.0	000.2500	-0016.6	007.1	093.2	000.2500	0046.2	016.3	49.76	
239.0	000.2500	-0017.3	007.1	092.8	000.2500	0046.4	016.2	49.85	
240.0	000.2500	-0017.7	007.1	092.5	000.2500	0046.7	016.1	49.98	
241.0	000.2500	-0018.0	007.1	092.1	000.2500	0046.9	016.0	50.07	
242.0	000.2500	-0017.6	007.1	091.7	000.2500	0046.9	016.0	50.13	
243.0	000.2500	-0016.8	007.1	091.3	000.2500	0046.8	015.9	50.16	
244.0	000.2500	-0016.3	007.1	090.9	000.2500	0046.7	015.9	50.19	
245.0	000.2500	-0016.0	007.1	090.5	000.2500	0046.9	015.8	50.27	
246.0	000.2500	-0015.5	007.1	090.1	000.2500	0047.3	015.8	50.40	
247.0	000.2500	-0015.4	007.1	089.7	000.2500	0047.9	015.7	50.57	
248.0	000.2500	-0015.5	007.1	089.3	000.2500	0048.6	015.7	50.75	
249.0	000.2500	-0015.7	007.1	088.9	000.2500	0049.2	015.6	50.90	
250.0	000.2500	-0015.4	007.1	088.4	000.2500	0049.4	015.6	50.97	
251.0	000.2500	-0015.1	007.1	088.0	000.2500	0049.4	015.5	51.02	
252.0	000.2500	-0014.6	007.1	087.6	000.2500	0049.2	015.5	51.01	
253.0	000.2500	-0014.4	007.1	087.1	000.2500	0048.9	015.5	50.97	

**Munn-Reese, Inc.**

Broadcast Engineering Consultants  
Coldwater, MI 49036



## Exhibit 13.7

### Contour Protection Studies Toward CH291D - Adrian, MO

Azimuth (degrees)	ERP (kW)	HAAT (m)	Dist (km)	Azimuth (degrees)	ERP (kW)	HAAT (m)	Dist (km)	Actual (dBu)
254.0	000.2500	-0014.1	007.1	086.7	000.2500	0048.9	015.4	50.99
255.0	000.2500	-0014.3	007.1	086.2	000.2500	0048.9	015.4	51.02
256.0	000.2500	-0014.5	007.1	085.8	000.2500	0049.0	015.4	51.06
257.0	000.2500	-0014.4	007.1	085.3	000.2500	0049.5	015.4	51.18
258.0	000.2500	-0013.9	007.1	084.8	000.2500	0050.6	015.4	51.39
259.0	000.2500	-0013.2	007.1	084.4	000.2500	0051.3	015.3	51.54
260.0	000.2500	-0011.5	007.1	083.9	000.2500	0051.8	015.3	51.64
261.0	000.2500	-0010.0	007.1	083.5	000.2500	0052.6	015.3	51.79
262.0	000.2500	-0008.7	007.1	083.0	000.2500	0053.4	015.3	51.94
263.0	000.2500	-0007.7	007.1	082.5	000.2500	0054.1	015.3	52.06
264.0	000.2500	-0006.7	007.1	082.1	000.2500	0054.8	015.3	52.16
265.0	000.2500	-0005.9	007.1	081.6	000.2500	0055.3	015.3	52.24
266.0	000.2500	-0005.2	007.1	081.2	000.2500	0055.7	015.3	52.29
267.0	000.2500	-0004.1	007.1	080.7	000.2500	0056.1	015.4	52.34
268.0	000.2500	-0003.4	007.1	080.2	000.2500	0056.4	015.4	52.39
269.0	000.2500	-0003.2	007.1	079.8	000.2500	0056.9	015.4	52.44
270.0	000.2500	-0003.1	007.1	079.3	000.2500	0057.3	015.4	52.48
271.0	000.2500	-0002.6	007.1	078.9	000.2500	0057.7	015.4	52.52
272.0	000.2500	-0002.1	007.1	078.4	000.2500	0058.0	015.5	52.54
273.0	000.2500	-0002.0	007.1	078.0	000.2500	0058.4	015.5	52.56
274.0	000.2500	-0001.7	007.1	077.5	000.2500	0058.7	015.5	52.58
275.0	000.2500	-0001.0	007.1	077.1	000.2500	0059.0	015.6	52.59
276.0	000.2500	-0000.3	007.1	076.7	000.2500	0059.3	015.6	52.60
277.0	000.2500	0000.6	007.1	076.2	000.2500	0059.5	015.6	52.59
278.0	000.2500	0001.3	007.1	075.8	000.2500	0059.7	015.7	52.57
279.0	000.2500	0002.0	007.1	075.4	000.2500	0059.7	015.7	52.54
280.0	000.2500	0002.6	007.1	075.0	000.2500	0059.8	015.8	52.50
281.0	000.2500	0003.4	007.1	074.6	000.2500	0060.0	015.8	52.48
282.0	000.2500	0004.1	007.1	074.2	000.2500	0060.2	015.9	52.46
283.0	000.2500	0005.1	007.1	073.8	000.2500	0060.4	016.0	52.43
284.0	000.2500	0006.7	007.1	073.4	000.2500	0060.7	016.0	52.41
285.0	000.2500	0008.3	007.1	073.0	000.2500	0060.9	016.1	52.38
286.0	000.2500	0010.0	007.1	072.7	000.2500	0061.0	016.1	52.33
287.0	000.2500	0011.4	007.1	072.3	000.2500	0061.1	016.2	52.29
288.0	000.2500	0012.4	007.1	071.9	000.2500	0061.2	016.3	52.25
289.0	000.2500	0013.1	007.1	071.6	000.2500	0061.5	016.4	52.21
290.0	000.2500	0013.5	007.1	071.2	000.2500	0061.8	016.4	52.18
291.0	000.2500	0013.7	007.1	070.9	000.2500	0062.0	016.5	52.14
292.0	000.2500	0013.3	007.1	070.6	000.2500	0062.2	016.6	52.10
293.0	000.2500	0012.4	007.1	070.3	000.2500	0062.5	016.7	52.06
294.0	000.2500	0011.5	007.1	070.0	000.2500	0062.9	016.8	52.03
295.0	000.2500	0010.4	007.1	069.7	000.2500	0063.2	016.8	52.00
296.0	000.2500	0009.2	007.1	069.4	000.2500	0063.5	016.9	51.96
297.0	000.2500	0008.1	007.1	069.1	000.2500	0063.9	017.0	51.92
298.0	000.2500	0007.7	007.1	068.8	000.2500	0064.1	017.1	51.88
299.0	000.2500	0007.9	007.1	068.5	000.2500	0064.4	017.2	51.83
300.0	000.2500	0008.7	007.1	068.3	000.2500	0064.7	017.3	51.78

**Munn-Reese, Inc.**

Broadcast Engineering Consultants

Coldwater, MI 49036

# Exhibit 13.7

## Contour Protection Studies Toward CH291D - Adrian, MO

06-07-2011

Terrain Data: USGS 03 SEC

FMOver Analysis

648008 BNPFT20030317BSU

CH290D.P

Channel = 291D

Max ERP = 0.25 kW

RCAMSL = 313 M

N. Lat. 38 23 30.0

W. Lng. 94 21 00.0

Protected

60 dBu

Channel = 290D

Max ERP = 0.25 kW

RCAMSL = 250 M

N. Lat. 38 25 02.0

W. Lng. 94 05 42.0

Interfering

54 dBu

Azimuth (degrees)	ERP (kW)	HAAT (m)	Dist (km)	Azimuth (degrees)	ERP (kW)	HAAT (m)	Dist (km)	Actual (dBu)	IX (km)
038.0	000.2500	0068.9	010.8	290.1	000.2500	0013.6	016.6	45.65	
039.0	000.2500	0069.1	010.8	290.0	000.2500	0013.5	016.4	45.80	
040.0	000.2500	0069.7	010.9	289.9	000.2500	0013.5	016.2	45.97	
041.0	000.2500	0070.2	010.9	289.8	000.2500	0013.5	016.0	46.13	
042.0	000.2500	0070.8	010.9	289.7	000.2500	0013.4	015.8	46.29	
043.0	000.2500	0071.2	011.0	289.5	000.2500	0013.3	015.6	46.45	
044.0	000.2500	0071.5	011.0	289.2	000.2500	0013.2	015.4	46.61	
045.0	000.2500	0072.2	011.0	289.1	000.2500	0013.2	015.3	46.78	
046.0	000.2500	0072.3	011.1	288.8	000.2500	0013.0	015.1	46.93	
047.0	000.2500	0072.4	011.1	288.5	000.2500	0012.8	014.9	47.10	
048.0	000.2500	0072.6	011.1	288.2	000.2500	0012.6	014.7	47.30	
049.0	000.2500	0072.9	011.1	287.8	000.2500	0012.3	014.6	47.50	
050.0	000.2500	0073.0	011.1	287.5	000.2500	0011.9	014.4	47.71	
051.0	000.2500	0073.1	011.1	287.0	000.2500	0011.5	014.2	47.90	
052.0	000.2500	0072.9	011.1	286.6	000.2500	0010.8	014.1	48.09	
053.0	000.2500	0072.4	011.1	286.0	000.2500	0010.0	013.9	48.27	
054.0	000.2500	0072.2	011.0	285.4	000.2500	0009.1	013.8	48.45	
055.0	000.2500	0072.0	011.0	284.9	000.2500	0008.1	013.7	48.63	
056.0	000.2500	0071.6	011.0	284.3	000.2500	0007.1	013.5	48.80	
057.0	000.2500	0071.1	011.0	283.6	000.2500	0006.1	013.4	48.95	
058.0	000.2500	0070.7	010.9	282.9	000.2500	0005.0	013.3	49.11	
059.0	000.2500	0070.4	010.9	282.3	000.2500	0004.3	013.2	49.27	
060.0	000.2500	0070.4	010.9	281.7	000.2500	0003.9	013.0	49.45	
061.0	000.2500	0070.3	010.9	281.0	000.2500	0003.4	012.9	49.61	
062.0	000.2500	0069.7	010.9	280.2	000.2500	0002.7	012.8	49.74	
063.0	000.2500	0068.6	010.8	279.3	000.2500	0002.2	012.8	49.81	
064.0	000.2500	0067.8	010.7	278.5	000.2500	0001.6	012.7	49.91	
065.0	000.2500	0067.4	010.7	277.7	000.2500	0001.2	012.6	50.02	
066.0	000.2500	0066.9	010.7	276.9	000.2500	0000.5	012.6	50.12	
067.0	000.2500	0066.0	010.6	276.1	000.2500	-0000.3	012.5	50.18	
068.0	000.2500	0065.1	010.5	275.2	000.2500	-0000.9	012.5	50.21	
069.0	000.2500	0063.9	010.5	274.2	000.2500	-0001.6	012.5	50.22	
070.0	000.2500	0062.8	010.4	273.3	000.2500	-0001.9	012.5	50.23	

**Munn-Reese, Inc.**

Broadcast Engineering Consultants

Coldwater, MI 49036

## Exhibit 13.7

### Contour Protection Studies Toward CH291D - Adrian, MO

---

Azimuth (degrees)	ERP (kW)	HAAT (m)	Dist (km)	Azimuth (degrees)	ERP (kW)	HAAT (m)	Dist (km)	Actual (dBu)
071.0	000.2500	0061.9	010.3	272.4	000.2500	-0002.1	012.5	50.24
072.0	000.2500	0061.2	010.3	271.6	000.2500	-0002.3	012.5	50.26
073.0	000.2500	0060.9	010.2	270.8	000.2500	-0002.8	012.4	50.31
074.0	000.2500	0060.3	010.2	269.9	000.2500	-0003.2	012.4	50.32
075.0	000.2500	0059.8	010.2	269.1	000.2500	-0003.2	012.4	50.34
076.0	000.2500	0059.6	010.1	268.3	000.2500	-0003.3	012.4	50.38
077.0	000.2500	0059.0	010.1	267.4	000.2500	-0003.7	012.4	50.36
078.0	000.2500	0058.4	010.0	266.6	000.2500	-0004.5	012.4	50.32
079.0	000.2500	0057.6	010.0	265.8	000.2500	-0005.4	012.5	50.26
080.0	000.2500	0056.7	009.9	264.9	000.2500	-0006.0	012.5	50.18
081.0	000.2500	0055.8	009.8	264.1	000.2500	-0006.6	012.6	50.08
082.0	000.2500	0054.9	009.7	263.3	000.2500	-0007.3	012.7	49.97
083.0	000.2500	0053.4	009.6	262.6	000.2500	-0008.1	012.8	49.78
084.0	000.2500	0051.7	009.4	261.8	000.2500	-0008.9	013.0	49.54
085.0	000.2500	0050.2	009.3	261.2	000.2500	-0009.8	013.1	49.32
086.0	000.2500	0048.9	009.2	260.5	000.2500	-0010.7	013.3	49.12
087.0	000.2500	0048.9	009.2	259.8	000.2500	-0011.8	013.3	49.08
088.0	000.2500	0049.4	009.2	259.1	000.2500	-0013.1	013.3	49.13
089.0	000.2500	0049.0	009.2	258.5	000.2500	-0013.6	013.3	49.03
090.0	000.2500	0047.5	009.0	257.9	000.2500	-0013.9	013.5	48.78
091.0	000.2500	0046.7	008.9	257.4	000.2500	-0014.2	013.7	48.63
092.0	000.2500	0046.9	008.9	256.7	000.2500	-0014.5	013.7	48.60
093.0	000.2500	0046.3	008.9	256.2	000.2500	-0014.5	013.8	48.46
094.0	000.2500	0045.8	008.8	255.6	000.2500	-0014.4	013.9	48.34
095.0	000.2500	0045.4	008.8	255.1	000.2500	-0014.3	014.0	48.22
096.0	000.2500	0044.7	008.7	254.6	000.2500	-0014.2	014.1	48.06
097.0	000.2500	0044.5	008.7	254.1	000.2500	-0014.1	014.2	47.96
098.0	000.2500	0044.4	008.7	253.5	000.2500	-0014.1	014.2	47.87
099.0	000.2500	0044.5	008.7	253.0	000.2500	-0014.4	014.3	47.81
100.0	000.2500	0044.9	008.7	252.3	000.2500	-0014.5	014.3	47.77
101.0	000.2500	0045.4	008.8	251.7	000.2500	-0014.8	014.4	47.74
102.0	000.2500	0045.9	008.8	251.1	000.2500	-0015.0	014.4	47.70
103.0	000.2500	0046.3	008.9	250.4	000.2500	-0015.2	014.4	47.65
104.0	000.2500	0046.6	008.9	249.9	000.2500	-0015.5	014.5	47.58
105.0	000.2500	0046.6	008.9	249.4	000.2500	-0015.7	014.6	47.47
106.0	000.2500	0046.5	008.9	248.9	000.2500	-0015.6	014.7	47.36
107.0	000.2500	0046.4	008.9	248.4	000.2500	-0015.5	014.8	47.24
108.0	000.2500	0046.1	008.9	248.1	000.2500	-0015.5	014.9	47.09
109.0	000.2500	0046.0	008.8	247.6	000.2500	-0015.4	015.0	46.98
110.0	000.2500	0045.6	008.8	247.3	000.2500	-0015.4	015.1	46.87
111.0	000.2500	0044.6	008.7	247.2	000.2500	-0015.4	015.3	46.70
112.0	000.2500	0044.0	008.6	247.0	000.2500	-0015.5	015.5	46.57
113.0	000.2500	0043.5	008.6	246.7	000.2500	-0015.5	015.6	46.44
114.0	000.2500	0042.6	008.5	246.6	000.2500	-0015.5	015.8	46.30
115.0	000.2500	0042.0	008.4	246.5	000.2500	-0015.5	016.0	46.16

**Munn-Reese, Inc.**

Broadcast Engineering Consultants

Coldwater, MI 49036