

TECHNICAL REPORT

This technical report has been developed in support of an application for a minor modification to KERL(FM) 297A at Cotton Plant, AR, FCC file no. BLH-20141103AFA. A one-step upgrade to channel 297C3 is submitted. The following exhibits are provided for the form 301 minor modification:

- E-1 KERL(FM) Spacing Study
- E-2 Fully-Spaced Reference Site Study
- E-3 Reference Site Aerial Photo
- E-4 Reference Site 23.24 km (70 dBu) Circle Plot
- E-5 Interference Contour Plots
- E-6 70 dBu Longley-Rice coverage of Cotton Plant, AR
- E-7 Tower ASR 1248817

KERL(FM) Spacing Study:

KERL(FM) will be fully spaced at channel 297C3, with the exception to KQXF(FM) 297A at Osceola, AR and KXHT(FM) 296A at Marion, AR (Exhibit E-1). Both KQXF(FM) and KXHT(FM) are 73.215 short-spaced facilities. A fully-spaced reference site, aerial photo, and a 70 dBu (23.24 km) circle plot which encompasses the Cotton Plant, AR community of license is shown in exhibits E-2 to E-4. An interference plot to KQXF(FM) and KXHT(FM) shows the KERL(FM) modification will not produce any interference overlap to either facility (exhibit E-5).

KERL(FM) Antenna System:

The facility will remain at its existing tower, ASR 1248817, at coordinates:

34-58-07N 90-59-48W NAD27.

A PSI FMR-6C six bay full-wavelength nondirectional antenna is mounted at a COR AGL of 97 meters, 160 meters AMSL, and will operate at an ERP of 14.0 kW.

Anderson Associates

Broadcast Consultants
1519 Euclid Avenue
Bowling Green, KY 42103

Community 70 dBu Coverage Based on Longley-Rice:

The KERL(FM) modification will place a 70 dBu contour over the entire Cotton Plant community of license, shown in exhibit E-6, based on the use of Longley-Rice propagation prediction. The Longley-Rice predicted 70 dBu contour exceeds the FCC calculated 70 dBu contour by greater than the required 10%, and is contained within or limited to the extent of the FCC standard method prediction of the 60 dBu contour. The results of this analysis are tabulated below. The Longley-Rice “first occurrence” 70 dBu contour was calculated with the V-Soft Communications’ Probe 3 software and the FCC thirty (30) second terrain database.

AZ°	60 dBu km	70 dBu km	70 dBu L-R km	% Diff.
278	34.80	20.45	31.90	56.0
279	34.80	20.45	31.90	56.0
280	34.79	20.44	31.90	56.1
281	34.79	20.44	31.90	56.1
282	34.78	20.43	31.80	55.7
283	34.77	20.43	31.80	55.7

It is submitted that the Longley-Rice methodology may be used to show the 70 dBu coverage of Cotton Plant, AR, in accordance with the Commission’s rules.

RF Exposure Calculation:

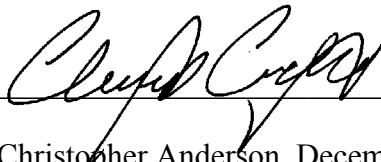
The RF production of the 14.0 kW six bay facility was calculated using the Commission’s FMMODEL program. The maximum RF at a height of 2 meters above ground was calculated to be 7.10 $\mu\text{Watts}/\text{cm}^2$ at a distance of 30 meters from the tower, which is below 5% of the 200 $\mu\text{Watts}/\text{cm}^2$ permissible for general public exposure, allowing exclusion from consideration.

Anderson Associates

Broadcast Consultants
1519 Euclid Avenue
Bowling Green, KY 42103

Conclusion:

It is concluded that the minor modification of KERL(FM) is in full compliance with the Commission rules and policies.



Christopher Anderson December 20, 2014
andersce@bham.rr.com

© 2014 Anderson Associates

E-1 KERL(FM) 297C3 Spacing Study

REFERENCE		CLASS = C3	DISPLAY DATES
34 58 07.0 N.			DATA 12-20-14
90 59 48.0 W.	Current Spacings to 3rd Adj.		SEARCH 12-20-14
----- Channel 297 - 107.3 MHz -----			

Call	Channel	Location		Azi	Dist	FCC	Margin
KERL	LIC 297A	Cotton Plant	AR	0.0	0.00	141.5	-141.5
KQXF	LIC-N 297A	Osceola	AR	47.2	131.35	141.5	-10.2
KXHT	LIC-Z 296A	Marion	AR	75.5	84.74	88.5	-3.8 (1)
WMJW	LIC 298C3	Rosedale	MS	173.2	114.16	98.5	15.7
KFIN	LIC 300C1	Jonesboro	AR	14.0	94.97	75.5	19.5
KCNY	LIC 296C3	Greenbrier	AR	287.2	125.95	98.5	27.5
WHBQ-FM	LIC-N 298A	Germantown	TN	78.3	116.83	88.5	28.3
KDRS-FM	LIC-N 296A	Paragould	AR	16.9	123.14	88.5	34.6
KLAL	LIC-N 299C1	Wrightsville	AR	250.9	120.32	75.5	44.8

(1) The KERL(FM) one-step upgrade to 297C3 is to be designated as a 73.215 short-spaced facility with respect to the KQXF(FM) 297A and KXHT(FM) 296A 73.215 facilities.

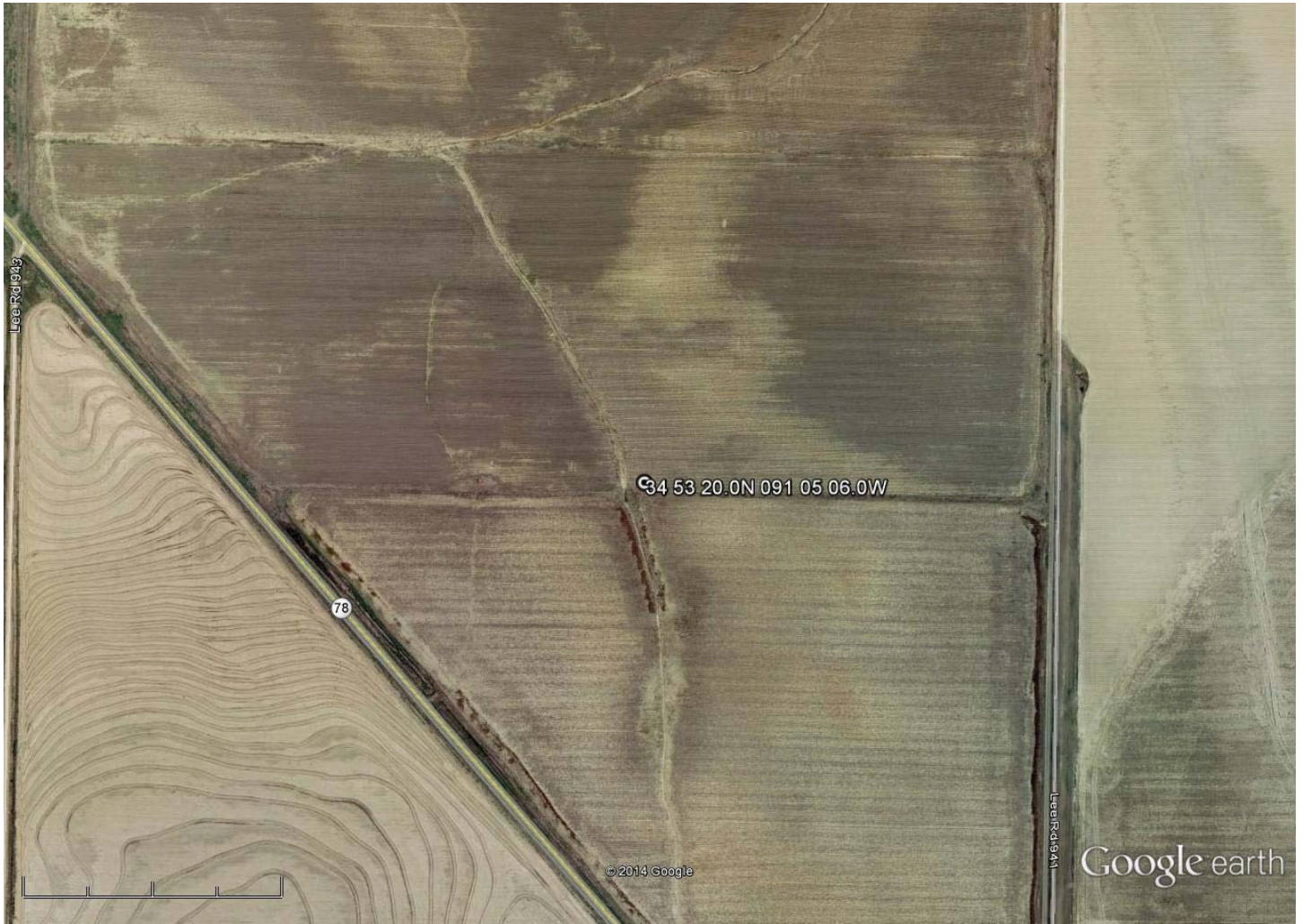
E-2 KERL(FM) 297C3 Fully-Spaced Reference Site

REFERENCE						DISPLAY DATES
34 53 20.0 N.		CLASS = C3				DATA 12-20-14
91 05 06.0 W.		Current Spacings to 3rd Adj.				SEARCH 12-20-14
----- Channel 297 - 107.3 MHz -----						

Call	Channel	Location		Azi	Dist	FCC	Margin
KERL	LIC 297A	Cotton Plant	AR	42.2	11.97	141.5	-129.5
KQXF	LIC-N 297A	Osceola	AR	46.7	143.29	141.5	1.8
KXHT	LIC-Z 296A	Marion	AR	71.4	95.00	88.5	6.5
WMJW	LIC 298C3	Rosedale	MS	168.3	106.73	98.5	8.2
KCNY	LIC 296C3	Greenbrier	AR	292.3	121.32	98.5	22.8
KFIN	LIC 300C1	Jonesboro	AR	17.0	105.66	75.5	30.2
KLAL	LIC-N 299C1	Wrightsville	AR	253.9	109.96	75.5	34.5
WHBQ-FM	LIC-N 298A	Germantown	TN	75.0	126.72	88.5	38.2
KDRS-FM	LIC-N 296A	Paragould	AR	19.1	134.06	88.5	45.6

All separation margins include rounding

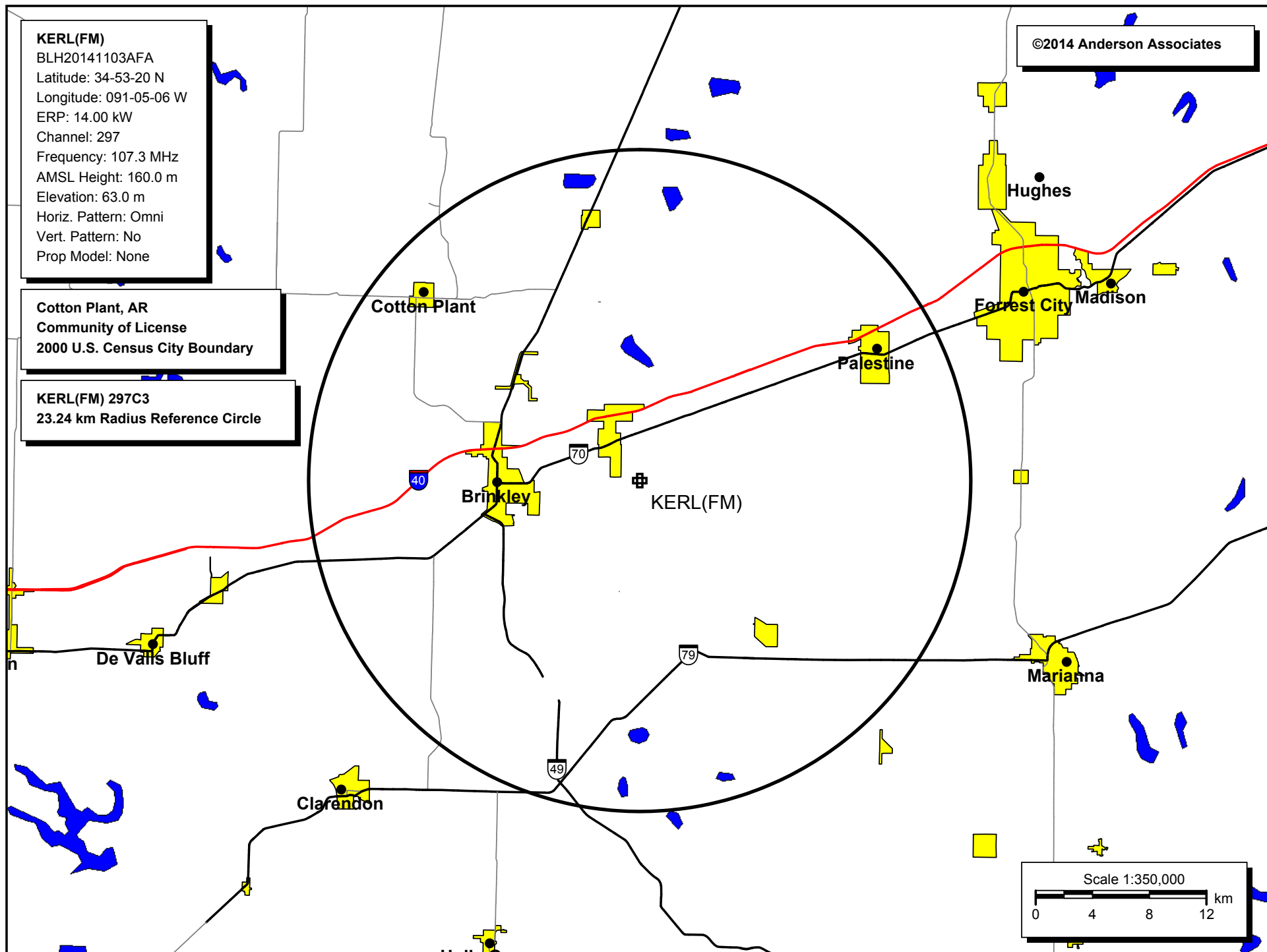
E-3 KERL(FM) 297C3 Fully-Spaced Reference Point



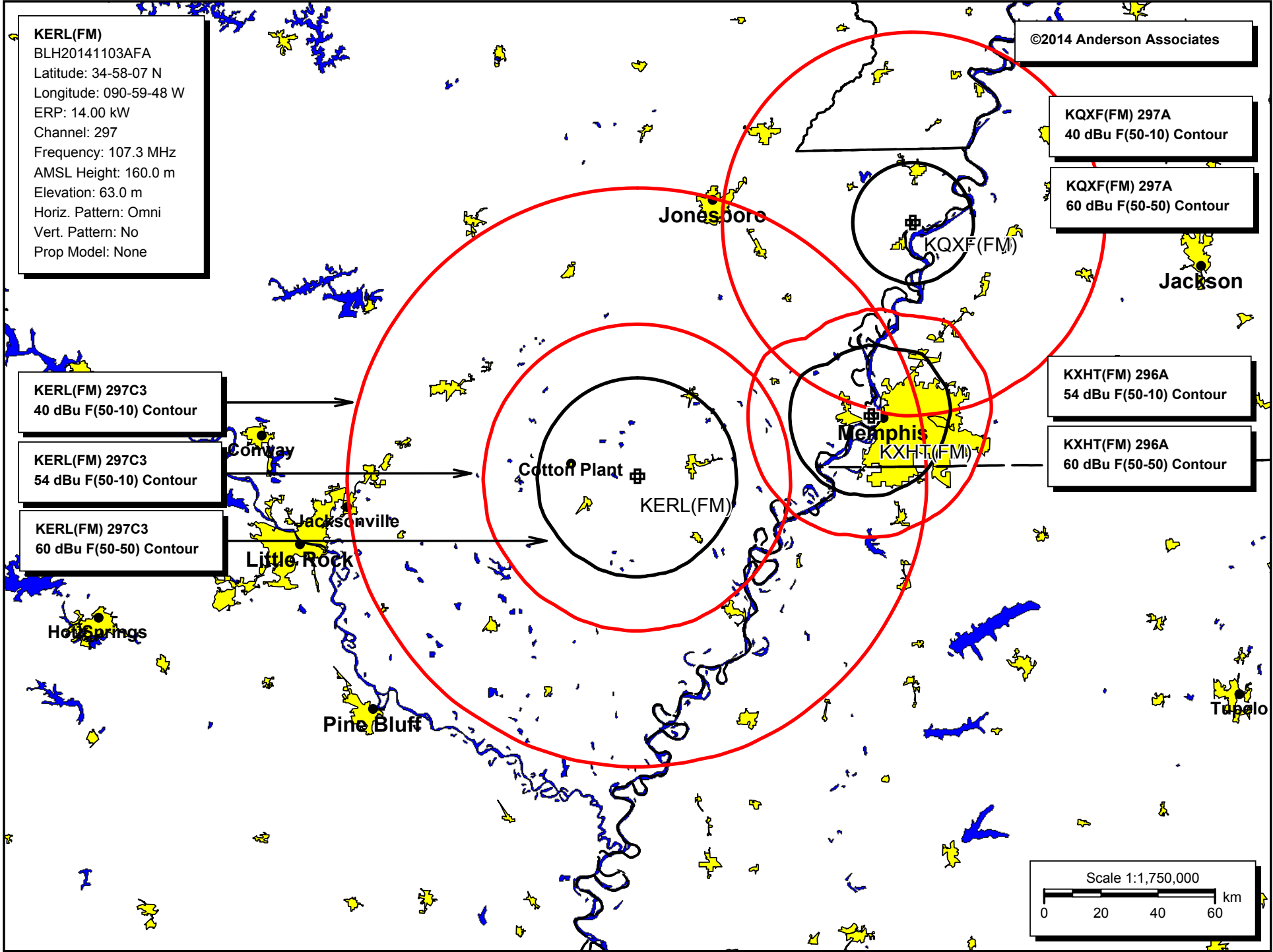
Google earth



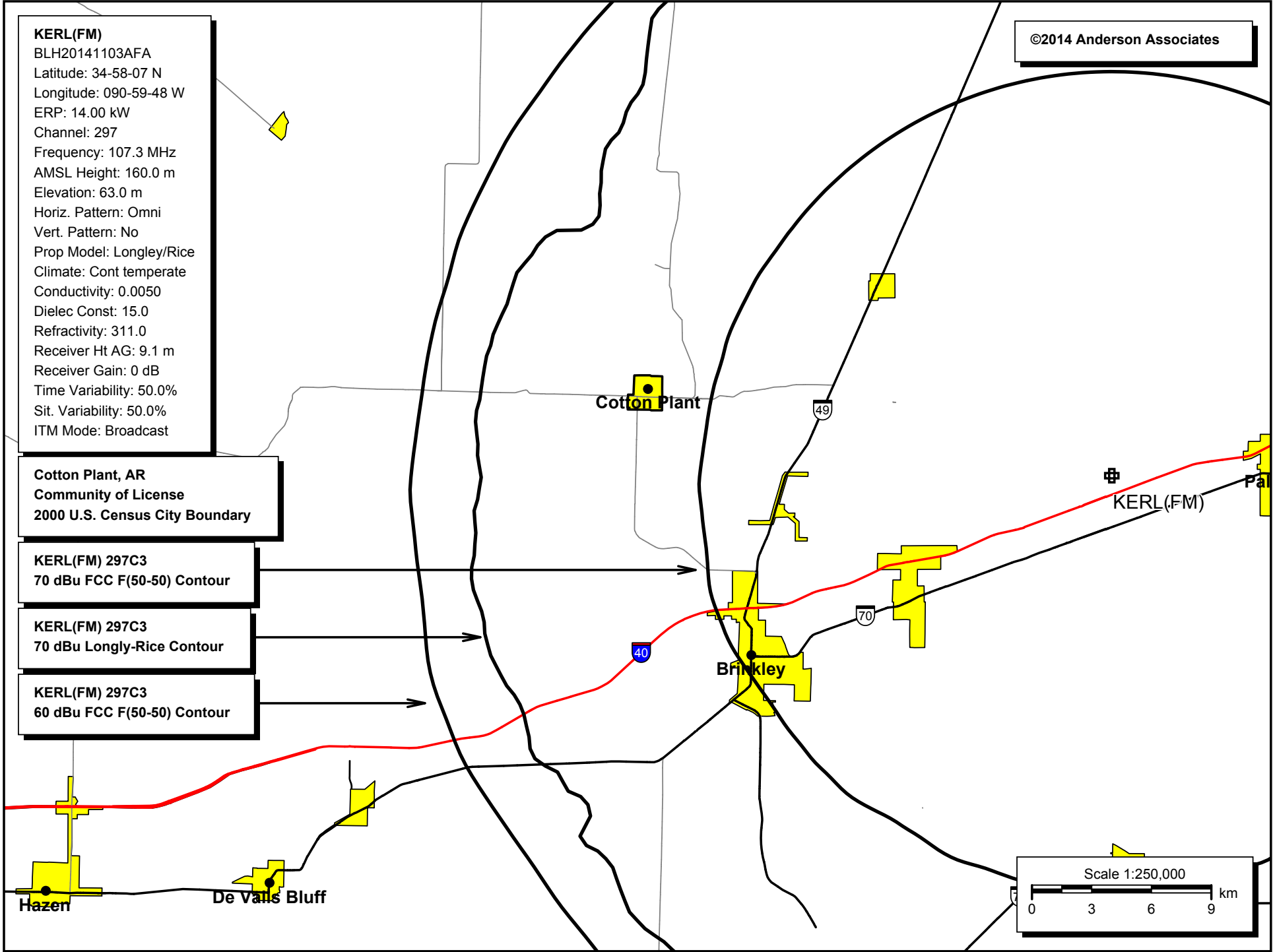
E-4 KERL(FM) 297C3 Reference Circle Plot



E-5 KERL(FM) 297C3 Contour Plots



E-6 KERL(FM) 297C3 Contour Plots



E-7 KERL(FM) 297C3 Tower ASR

ASR Registration Search

Registration 1248817

 [Map Registration](#)

Registration Detail

Reg Number	1248817	Status	Constructed
File Number	A0604228	Constructed	07/22/2008
EMI	No	Dismantled	
NEPA	No		

Antenna Structure

Structure Type TOWER - Free standing or Guyed Structure used for Commu

Location (in NAD83 Coordinates)

Lat/Long	34-58-07.0 N 090-59-48.0 W	Address	Forrest City, Arkansas
City, State	Forrest City , AR		
Zip	72372	County	ST. FRANCIS
Center of AM Array		Position of Tower in Array	

Heights (meters)

Elevation of Site Above Mean Sea Level	Overall Height Above Ground (AGL)
62.8	106.4
Overall Height Above Mean Sea Level	Overall Height Above Ground w/o Appurtenances
169.2	106.4

Painting and Lighting Specifications

FAA Chapters 4, 6, 12

Paint and Light in Accordance with FAA Circular Number 70/7460-1K

FAA Notification

FAA Study	2005-ASW-41-OE	FAA Issue Date	01/25/2005
-----------	----------------	----------------	------------

Owner & Contact Information

FRN	0017921164	Owner Entity Type	
Assignor FRN	0011328721	Assignor ID	L01028001

Owner

Caldwell Media, LLC
Attention To: Bradford Caldwell
P.O. Box P.O. Box 711
Wynne , AR 72396

P: (870)318-7354
F:
E: bradfordcaldwell@yahoo.com

Contact

Caldwell , Bradford
P.O. Box P.O. Box 711
Wynne , AR 72396

P: (870)318-7354
F:
E: bradfordcaldwell@yahoo.com

Last Action Status

Status	Constructed	Received	08/05/2008
--------	-------------	----------	------------