

JHT Ventures, Inc.
1090 kHz, Bellville, Texas
Seeks: Make Changes in Transmitter Site/Power

Exhibit: 1090 kHz Conductivity Radials, Page: 1

Measurements for 0.0 (360.0) degrees
KY5XND, 1680 kHz, 1.0 kW ND-D, Monaville, Texas

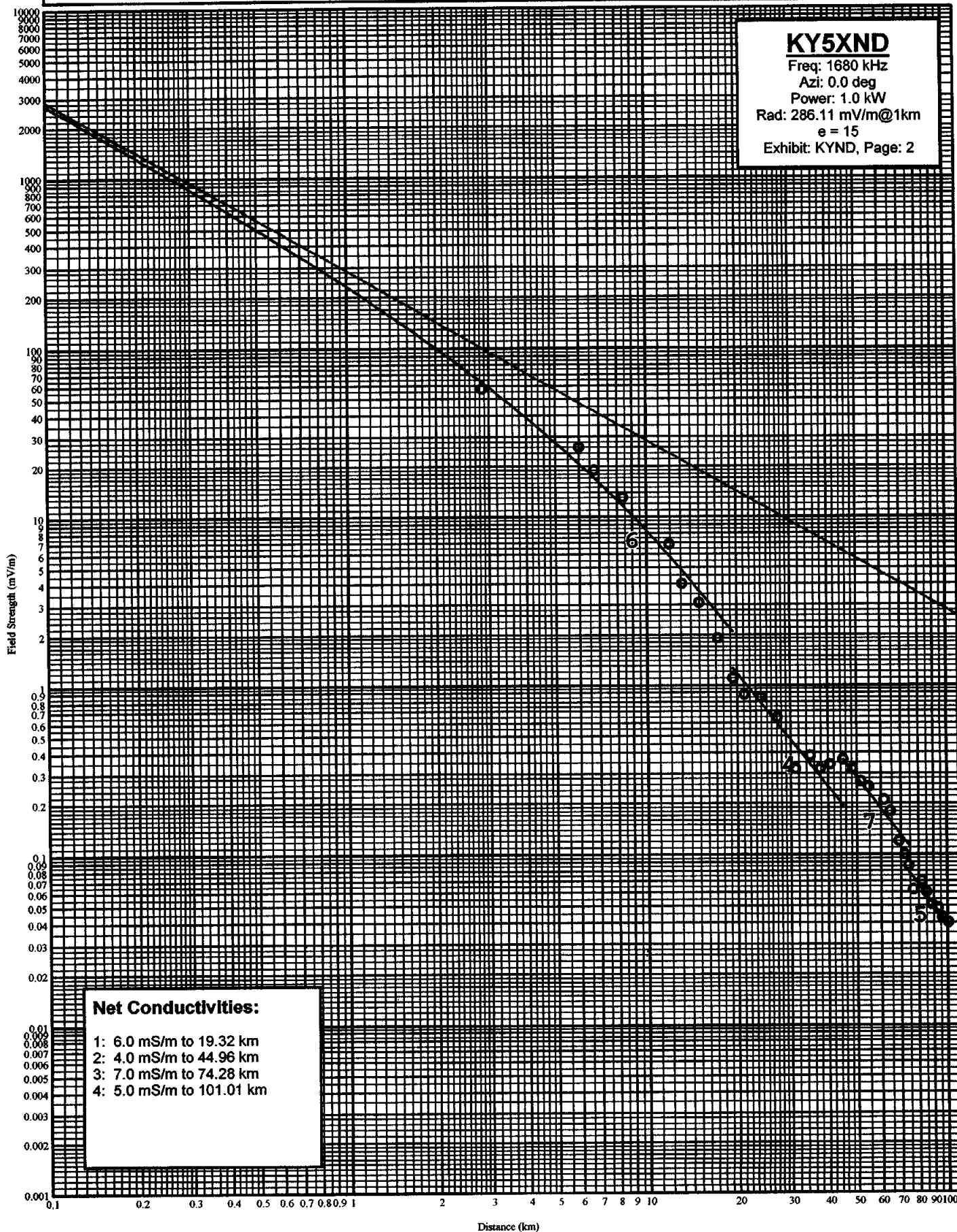
Point Number	Distance		Field	Notes	Date	Time
-----	(km)	(mi)	(mV/m)	-----	-----	-----
1	2.84	1.76	57.000		4/6/2009	0857
2	6.00	3.73	26.000		3/12/2009	0924
3	6.74	4.19	19.000		3/12/2009	0929
4	8.36	5.19	13.000		3/12/2009	0935
5	11.94	7.42	6.900		3/12/2009	0952
6	13.11	8.15	4.000		3/12/2009	1001
7	14.96	9.30	3.100		3/12/2009	1012
8	17.24	10.71	1.900		3/12/2009	1020
9	19.32	12.00	1.100		3/12/2009	1028
10	21.06	13.09	0.880		3/12/2009	1035
11	23.97	14.89	0.850		3/12/2009	1041
12	27.23	16.92	0.640		3/12/2009	1047
13	31.09	19.32	0.320		3/12/2009	1054
14	34.98	21.74	0.380		3/12/2009	1128
15	37.67	23.41	0.320		3/12/2009	1120
16	40.71	25.30	0.340		3/12/2009	1136
17	44.96	27.94	0.360		3/12/2009	1209
18	48.38	30.06	0.320		3/12/2009	1215
19	51.50	32.00	0.270		3/12/2009	1223
20	54.74	34.01	0.250		3/12/2009	1312
21	61.64	38.30	0.210		3/12/2009	1335
22	64.52	40.09	0.180		3/12/2009	1346
23	68.84	42.78	0.120		3/12/2009	1352
24	71.86	44.65	0.100		3/12/2009	1400
25	74.28	46.16	0.086		3/12/2009	1414
26	77.04	47.87	0.062		3/12/2009	1421
27	81.89	50.88	0.070		3/12/2009	1429
28	84.91	52.76	0.060		3/12/2009	1435
29	88.51	55.00	0.051		3/12/2009	1443
30	93.26	57.95	0.049		3/12/2009	1456
31	96.10	59.71	0.043		3/12/2009	1504
32	101.01	62.76	0.040		3/12/2009	1516

KY5XND AM Measured Field Strength

Shown With Matching Conductivity Curves
KY5XND (AM), 1680 kHz, 1.0 kW, ND-D, Monaville, Texas

KY5XND

Freq: 1680 kHz
Azi: 0.0 deg
Power: 1.0 kW
Rad: 286.11 mV/m@1km
e = 15
Exhibit: KYND, Page: 2



Measurements for JHT Ventures, Inc.
1090 kHz, Bellville, Texas
Seeks: Make Changes in Transmitter Site/Power

Exhibit: 1090 kHz Conductivity Radials, Page: 3

Measurements for 20.0 degrees
KY5XND, 1680 kHz, 1.0 kW ND-D, Monaville, Texas

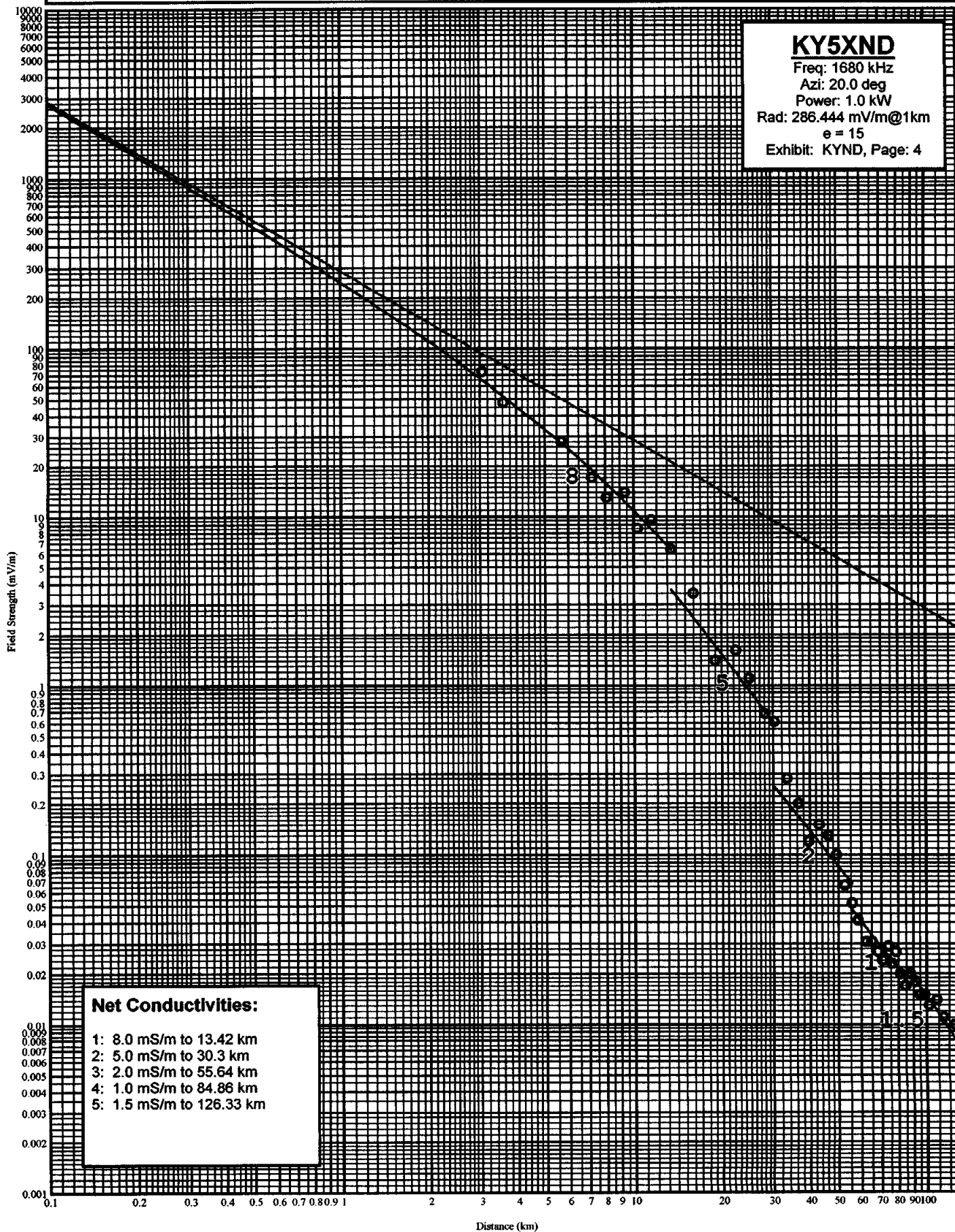
Point Number	Distance		Field	Notes	Date	Time
-----	(km)	(mi)	(mV/m)	-----	-----	-----
1	3.07	1.91	73.000		2/23/2009	0914
2	3.61	2.24	48.000		2/23/2009	0919
3	5.71	3.55	28.000		2/23/2009	0925
4	7.22	4.49	17.000		2/23/2009	0931
5	8.10	5.03	13.000		2/23/2009	0937
6	9.36	5.82	14.000		2/23/2009	0946
7	10.32	6.41	8.500		2/23/2009	0952
8	11.48	7.13	9.600		2/23/2009	1002
9	13.42	8.34	6.400		2/23/2009	1010
10	16.02	9.95	3.500		2/23/2009	1017
11	19.03	11.82	1.400		2/23/2009	1026
12	22.46	13.96	1.600		2/23/2009	1035
13	24.85	15.44	1.100		2/23/2009	1047
14	28.15	17.49	0.680		2/23/2009	1054
15	30.30	18.83	0.610		2/23/2009	1103
16	33.43	20.77	0.280		2/23/2009	1113
17	36.56	22.72	0.200		2/23/2009	1126
18	39.54	24.57	0.120		2/23/2009	1134
19	43.09	26.77	0.150		2/23/2009	1140
20	46.31	28.78	0.130		2/23/2009	1144
21	49.24	30.60	0.100		2/23/2009	1154
22	52.51	32.63	0.066		2/23/2009	1206
23	55.64	34.57	0.052		2/23/2009	1318
24	58.42	36.30	0.041		2/23/2009	1326
25	62.28	38.70	0.031		2/23/2009	1338
26	65.12	40.46	0.031		2/23/2009	1347
27	68.08	42.30	0.027		2/23/2009	1355
28	70.71	43.94	0.024		2/23/2009	1404
29	73.90	45.92	0.029		2/23/2009	1415
30	75.83	47.12	0.023		2/23/2009	1421
31	78.33	48.67	0.027		2/23/2009	1430
32	81.41	50.59	0.020		2/23/2009	1438
33	84.86	52.73	0.017		2/23/2009	1438
34	87.93	54.64	0.020		2/23/2009	1447
35	91.74	57.00	0.018		2/23/2009	1447
36	95.00	59.03	0.015		2/23/2009	1455
37	98.51	61.21	0.015		2/23/2009	1455
38	101.78	63.24	0.013		2/23/2009	1505
39	108.22	67.24	0.014		2/23/2009	1522
40	115.00	71.46	0.011		2/23/2009	1532
41	126.23	78.44	0.010		2/23/2009	1544

KY5XND AM Measured Field Strength

Shown With Matching Conductivity Curves
KY5XND (AM) 1680 kHz, 1.0 kW, ND-D, Monaville, Texas

KY5XND

Freq: 1680 kHz
Azi: 20.0 deg
Power: 1.0 kW
Rad: 286.444 mV/m@1km
 $e = 15$
Exhibit: KYND, Page: 4



Measurements for JHT Ventures, Inc.
1090 kHz, Bellville, Texas
Seeks: Make Changes in Transmitter Site/Power

Exhibit: 1090 kHz Conductivity Radials, Page: 5

Measurements for 40.0 degrees
KY5XND, 1680 kHz, 1.0 kW ND-D, Monaville, Texas

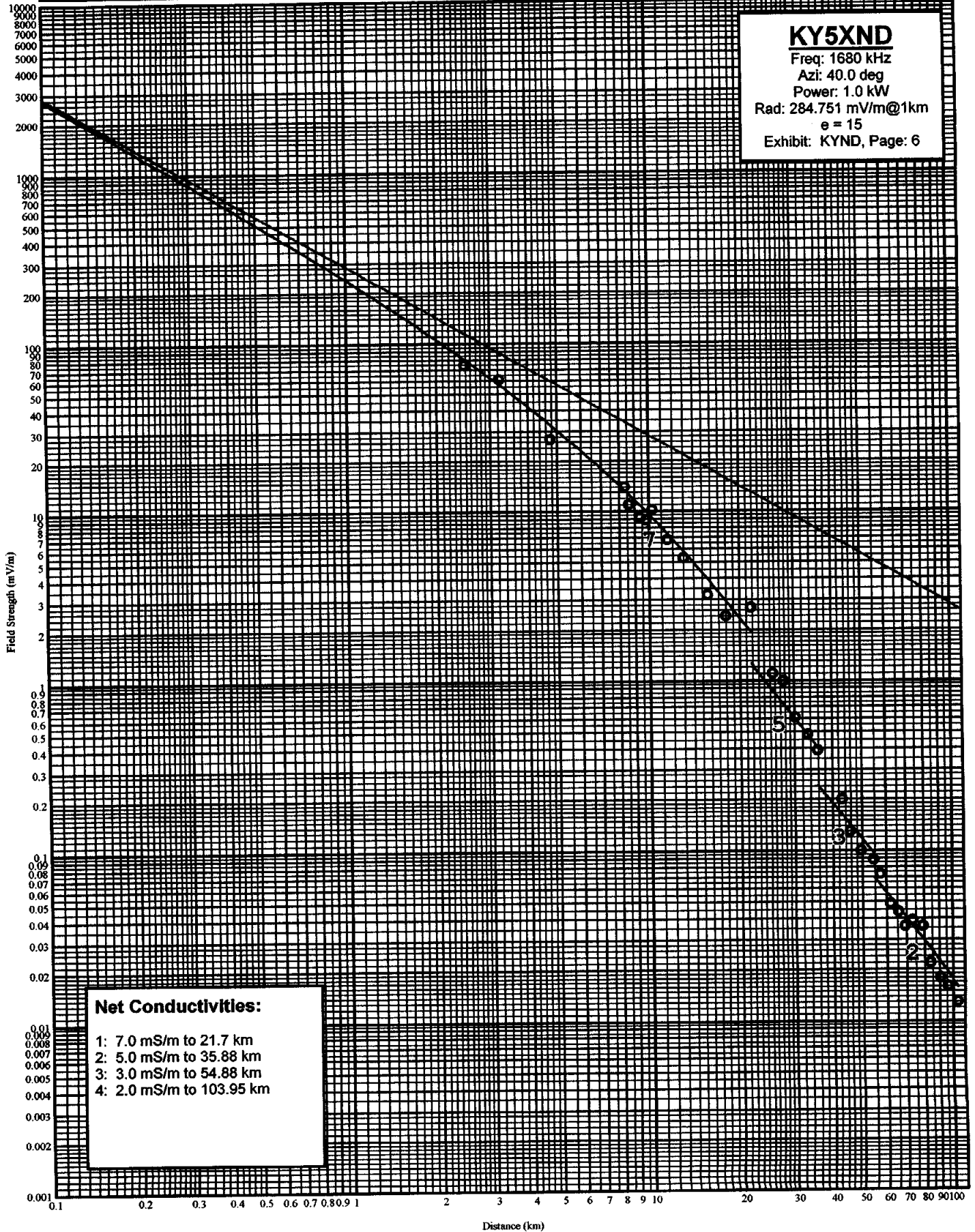
Point Number	Distance		Field	Notes	Date	Time
-----	(km)	(mi)	(mV/m)	-----	-----	-----
1	2.48	1.54	74.000		3/7/2009	0940
2	3.22	2.00	61.000		3/7/2009	0946
3	4.76	2.96	27.000		3/7/2009	0952
4	8.35	5.19	14.000		3/7/2009	1003
5	8.58	5.33	11.000		3/7/2009	1009
6	9.36	5.82	9.200		3/7/2009	1013
7	9.80	6.09	8.900		3/7/2009	1016
8	10.25	6.37	10.200		3/7/2009	1022
9	11.52	7.16	6.800		3/7/2009	1028
10	13.00	8.08	5.300		3/7/2009	1035
11	15.56	9.67	3.200		3/7/2009	1053
12	17.95	11.15	2.400		3/7/2009	1100
13	21.70	13.48	2.700		3/7/2009	1111
14	25.53	15.86	1.100		3/7/2009	1118
15	27.74	17.24	1.000		3/7/2009	1125
16	30.27	18.81	0.610		3/7/2009	1132
17	33.16	20.60	0.480		3/7/2009	1140
18	35.88	22.29	0.390		3/7/2009	1147
19	42.94	26.68	0.200		3/7/2009	1205
20	45.70	28.40	0.130		3/7/2009	1212
21	49.51	30.76	0.100		3/7/2009	1224
22	54.63	33.95	0.088		3/7/2009	1234
23	57.35	35.64	0.073		3/7/2009	1250
24	61.98	38.51	0.049		3/7/2009	1302
25	65.79	40.88	0.044		3/7/2009	1349
26	69.20	43.00	0.036		3/7/2009	1356
27	73.17	45.47	0.039		3/7/2009	1404
28	79.35	49.31	0.036		3/7/2009	1426
29	83.90	52.13	0.022		3/7/2009	1434
30	90.35	56.14	0.018		3/7/2009	1450
31	96.21	59.78	0.016		3/7/2009	1504
32	103.95	64.59	0.013		3/7/2009	1516

KY5XND AM Measured Field Strength

Shown With Matching Conductivity Curves
KY5XND (AM) 1680 kHz, 1.0 kW, ND-D, Monaville, Texas

KY5XND

Freq: 1680 kHz
Azi: 40.0 deg
Power: 1.0 kW
Rad: 284.751 mV/m@1km
 $\epsilon = 15$
Exhibit: KYND, Page: 6



Measurements for JHT Ventures, Inc.
 1090 kHz, Bellville, Texas
 Seeks: Make Changes in Transmitter Site/Power

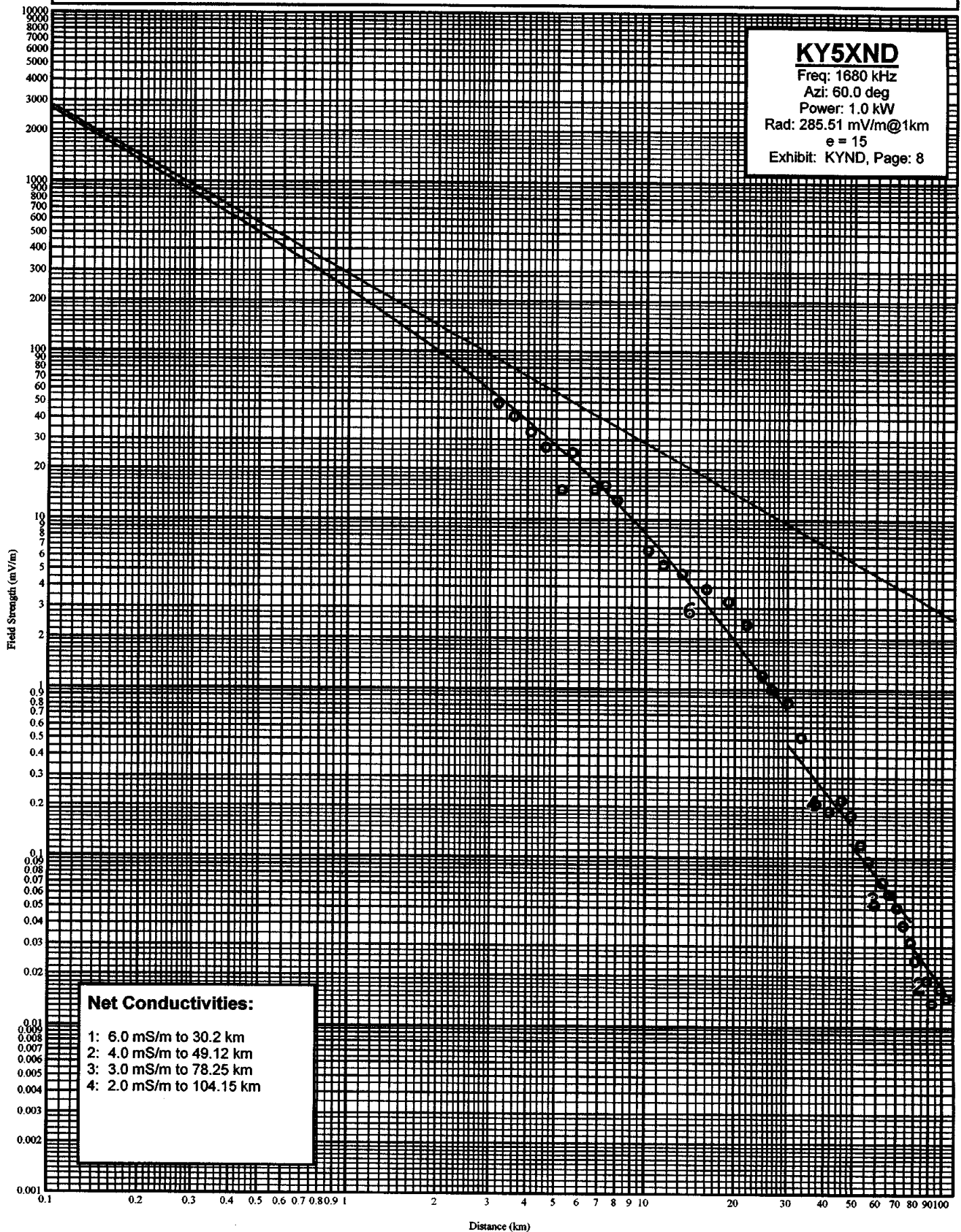
Exhibit: 1090 kHz Conductivity Radials, Page: 7

Measurements for 60.0 degrees
 KY5XND, 1680 kHz, 1.0 kW ND-D, Monaville, Texas

Point Number	Distance		Field	Notes	Date	Time
-----	(km)	(mi)	(mV/m)	-----	-----	-----
1	3.20	1.99	49.000		3/8/2009	0850
2	3.60	2.24	41.000		3/8/2009	0854
3	4.11	2.55	33.000		3/8/2009	0858
4	4.62	2.87	27.000		3/8/2009	0903
5	5.23	3.25	15.000		3/8/2009	0910
6	5.69	3.54	25.000		3/8/2009	0915
7	6.75	4.19	15.000		3/8/2009	0928
8	7.32	4.55	16.000		3/8/2009	0940
9	8.02	4.98	13.000		3/8/2009	0944
10	10.21	6.34	6.600		3/8/2009	0950
11	11.46	7.12	5.400		3/8/2009	0958
12	13.27	8.25	4.800		3/8/2009	1005
13	16.02	9.95	3.900		3/8/2009	1012
14	18.98	11.79	3.300		3/8/2009	1017
15	21.91	13.61	2.400		3/8/2009	1025
16	24.73	15.37	1.200		3/8/2009	1032
17	26.56	16.50	1.000		3/8/2009	1038
18	30.20	18.77	0.830		3/8/2009	1043
19	33.36	20.73	0.520		3/8/2009	1051
20	37.61	23.37	0.210		3/8/2009	1103
21	41.44	25.75	0.190		3/8/2009	1115
22	45.58	28.32	0.220		3/8/2009	1123
23	49.18	30.56	0.180		3/8/2009	1132
24	53.22	33.07	0.120		3/8/2009	1144
25	56.48	35.10	0.096		3/8/2009	1155
26	59.41	36.92	0.053		3/8/2009	1204
27	63.03	39.17	0.072		3/8/2009	1211
28	66.54	41.35	0.061		3/8/2009	1217
29	70.66	43.91	0.051		3/8/2009	1225
30	74.02	45.99	0.040		3/8/2009	1318
31	78.25	48.62	0.032		3/8/2009	1326
32	81.36	50.55	0.025		3/8/2009	1333
33	89.11	55.37	0.019		3/8/2009	1354
34	92.72	57.61	0.014		3/8/2009	1400
35	98.34	61.11	0.017		3/8/2009	1417
36	104.15	64.72	0.015		3/8/2009	1426

KY5XND AM Measured Field Strength

Shown With Matching Conductivity Curves
KY5XYND (AM), 1680 kHz, 1.0 kW, ND-D, Monaville, Texas



Measurements for JHT Ventures, Inc.
 1090 kHz, Bellville, Texas
 Seeks: Make Changes in Transmitter Site/Power

Exhibit: 1090 kHz Conductivity Radials, Page: 9

Measurements for 80.0 degrees
 KY5XND, 1680 kHz, 1.0 kW ND-D, Monaville, Texas

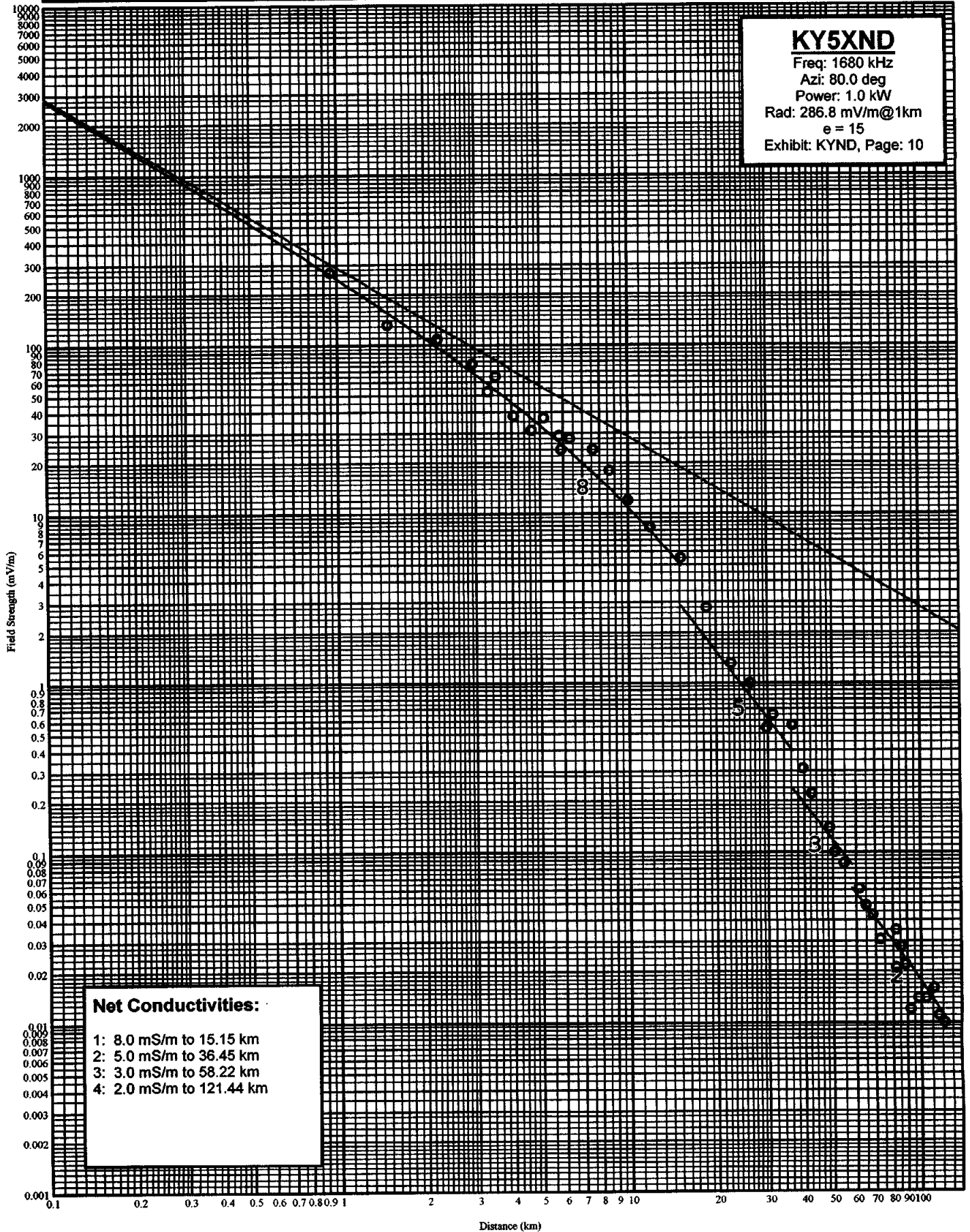
Point Number	Distance		Field	Notes	Date	Time
-----	(km)	(mi)	(mV/m)	-----	-----	----
1	0.95	0.59	268.000		3/9/2009	0816
2	1.50	0.93	132.000		3/9/2009	0820
3	2.22	1.38	108.000		3/9/2009	0824
4	2.93	1.82	77.000		3/9/2009	0828
5	3.31	2.06	53.000		3/9/2009	0834
6	3.52	2.19	65.000		3/9/2009	0839
7	4.06	2.52	38.000		3/9/2009	0845
8	4.67	2.90	31.000		3/9/2009	0850
9	5.15	3.20	37.000		3/9/2009	0856
10	5.81	3.61	29.000		3/9/2009	0903
11	5.91	3.67	24.000		3/9/2009	0906
12	6.33	3.93	28.000		3/9/2009	0911
13	7.60	4.72	24.000		3/9/2009	0916
14	8.65	5.37	18.000		3/9/2009	0923
15	10.01	6.22	12.000		3/9/2009	0930
16	11.88	7.38	8.400		3/9/2009	0836
17	15.15	9.41	5.500		3/9/2009	0843
18	18.52	11.51	2.800		3/9/2009	0850
19	22.49	13.97	1.300		3/9/2009	0902
20	26.20	16.28	1.000		3/9/2009	0917
21	29.75	18.49	0.540		3/9/2009	0926
22	31.20	19.39	0.650		3/9/2009	0934
23	36.45	22.65	0.560		3/9/2009	0949
24	39.61	24.61	0.310		3/9/2009	1001
25	42.30	26.28	0.220		3/9/2009	1011
26	48.81	30.33	0.140		3/9/2009	1026
27	50.90	31.63	0.100		3/8/2009	1750
28	54.57	33.91	0.086		3/8/2009	1741
29	61.56	38.25	0.061		3/8/2009	1734
30	64.93	40.35	0.049		3/8/2009	1726
31	68.37	42.48	0.043		3/8/2009	1718
32	72.62	45.12	0.031		3/8/2009	1711
33	82.07	51.00	0.035		3/8/2009	1646
34	82.07	51.00	0.021		3/8/2009	1700
35	85.10	52.88	0.028		3/8/2009	1637
36	88.26	54.84	0.022		3/8/2009	1630
37	92.01	57.17	0.012		3/8/2009	1624
38	97.92	60.84	0.014		3/8/2009	1600
39	104.39	64.86	0.014		3/8/2009	1551
40	111.10	69.03	0.016		3/8/2009	1542
41	116.21	72.21	0.011		3/8/2009	1535
42	121.44	75.46	0.010		3/8/2009	1526

KY5XND AM Measured Field Strength

Shown With Matching Conductivity Curves
KY5XND (AM), 1680 kHz, 1.0 kW, ND-D, Monaville, Texas

KY5XND

Freq: 1680 kHz
Azi: 80.0 deg
Power: 1.0 kW
Rad: 286.8 mV/m@1km
 $e = 15$
Exhibit: KYND, Page: 10



Measurements for JHT Ventures, Inc.
 1090 kHz, Bellville, Texas
 Seeks: Make Changes in Transmitter Site/Power

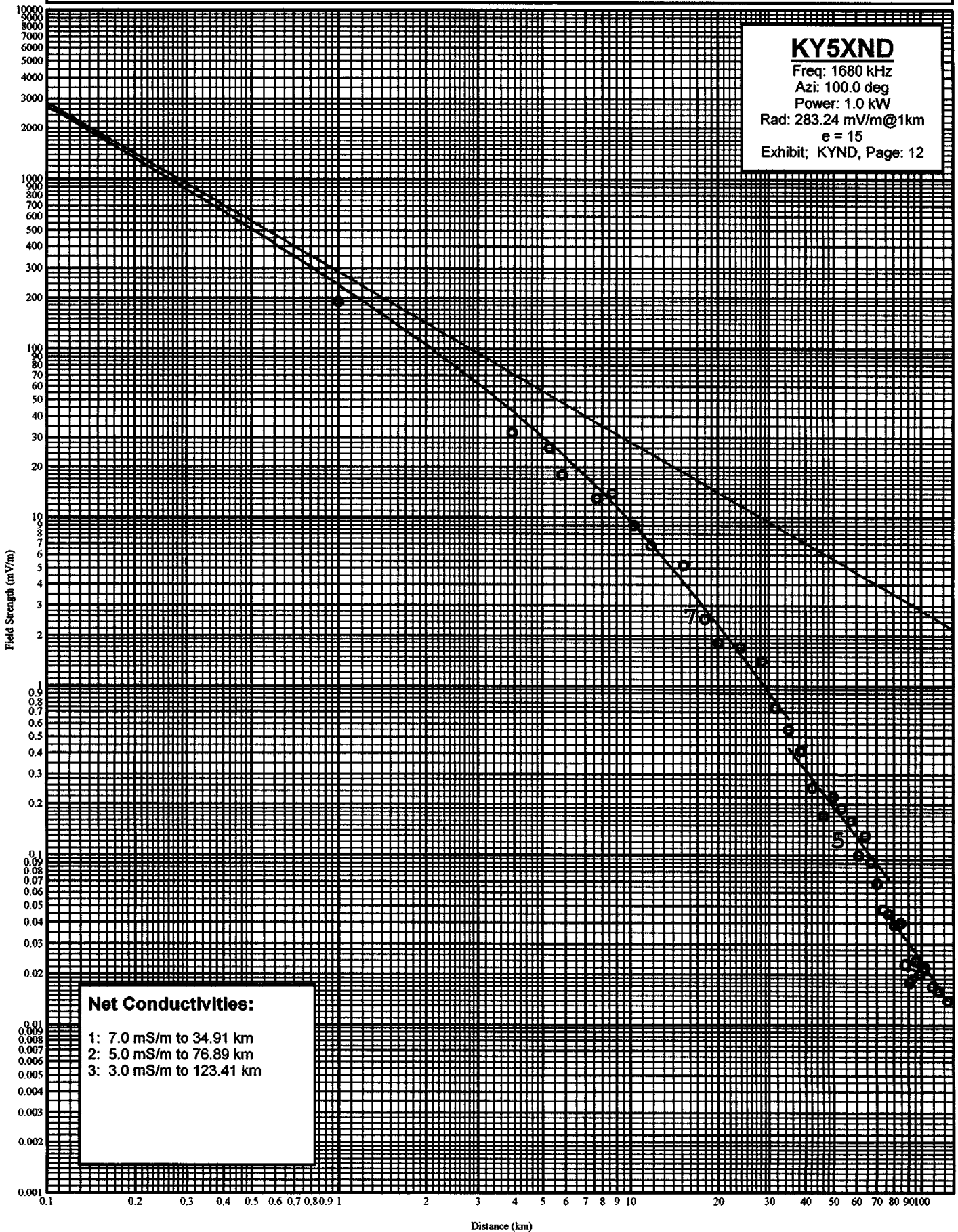
Exhibit: 1090 kHz Conductivity Radials, Page: 11

Measurements for 100.0 degrees
 KY5XND, 1680 kHz, 1.0 kW ND-D, Monaville, Texas

Point Number	Distance		Field	Notes	Date	Time
-----	(km)	(mi)	(mV/m)	-----	-----	-----
1	1.00	0.62	189.000		3/9/2009	1218
2	3.95	2.45	32.000		3/9/2009	1224
3	5.31	3.30	26.000		3/9/2009	1231
4	5.85	3.64	18.000		3/9/2009	1239
5	7.69	4.78	13.000		3/9/2009	1248
6	8.70	5.41	14.000		3/9/2009	1253
7	10.34	6.42	9.000		3/9/2009	1259
8	11.79	7.33	6.800		3/9/2009	1305
9	15.26	9.48	5.200		3/9/2009	1317
10	18.00	11.18	2.500		3/9/2009	1327
11	20.16	12.53	1.800		3/9/2009	1335
12	24.00	14.91	1.700		3/9/2009	1345
13	28.32	17.60	1.400		3/9/2009	1357
14	31.61	19.64	0.740		3/9/2009	1405
15	34.91	21.69	0.550		3/9/2009	1412
16	38.41	23.87	0.410		3/9/2009	1418
17	42.18	26.21	0.250		3/9/2009	1425
18	45.89	28.51	0.170		3/9/2009	1434
19	49.60	30.82	0.220		3/9/2009	1442
20	53.19	33.05	0.190		3/9/2009	1450
21	57.15	35.51	0.160		3/9/2009	1502
22	60.78	37.77	0.100		3/9/2009	1513
23	64.14	39.85	0.130		3/9/2009	1519
24	67.00	41.63	0.091		3/9/2009	1524
25	70.42	43.76	0.068		3/9/2009	1532
26	73.71	45.80	0.048		3/9/2009	1541
27	76.89	47.78	0.045		3/9/2009	1547
28	80.55	50.05	0.039		3/9/2009	1600
29	84.59	52.56	0.040		3/9/2009	1608
30	87.70	54.49	0.023		3/9/2009	1615
31	90.82	56.43	0.018		3/9/2009	1623
32	95.39	59.27	0.024		3/9/2009	1632
33	99.05	61.55	0.020		3/9/2009	1643
34	102.41	63.63	0.022		3/9/2009	1656
35	108.90	67.67	0.017		3/9/2009	1704
36	115.51	71.77	0.016		3/9/2009	1716
37	123.94	77.01	0.014		3/9/2009	1726

KY5XND AM Measured Field Strength

Shown With Matching Conductivity Curves
KY5XND (AM), 1680 kHz, 1.0 kW, ND-D



Measurements for JHT Ventures, Inc.
 1090 kHz, Bellville, Texas
 Seeks: Make Changes in Transmitter Site/Power

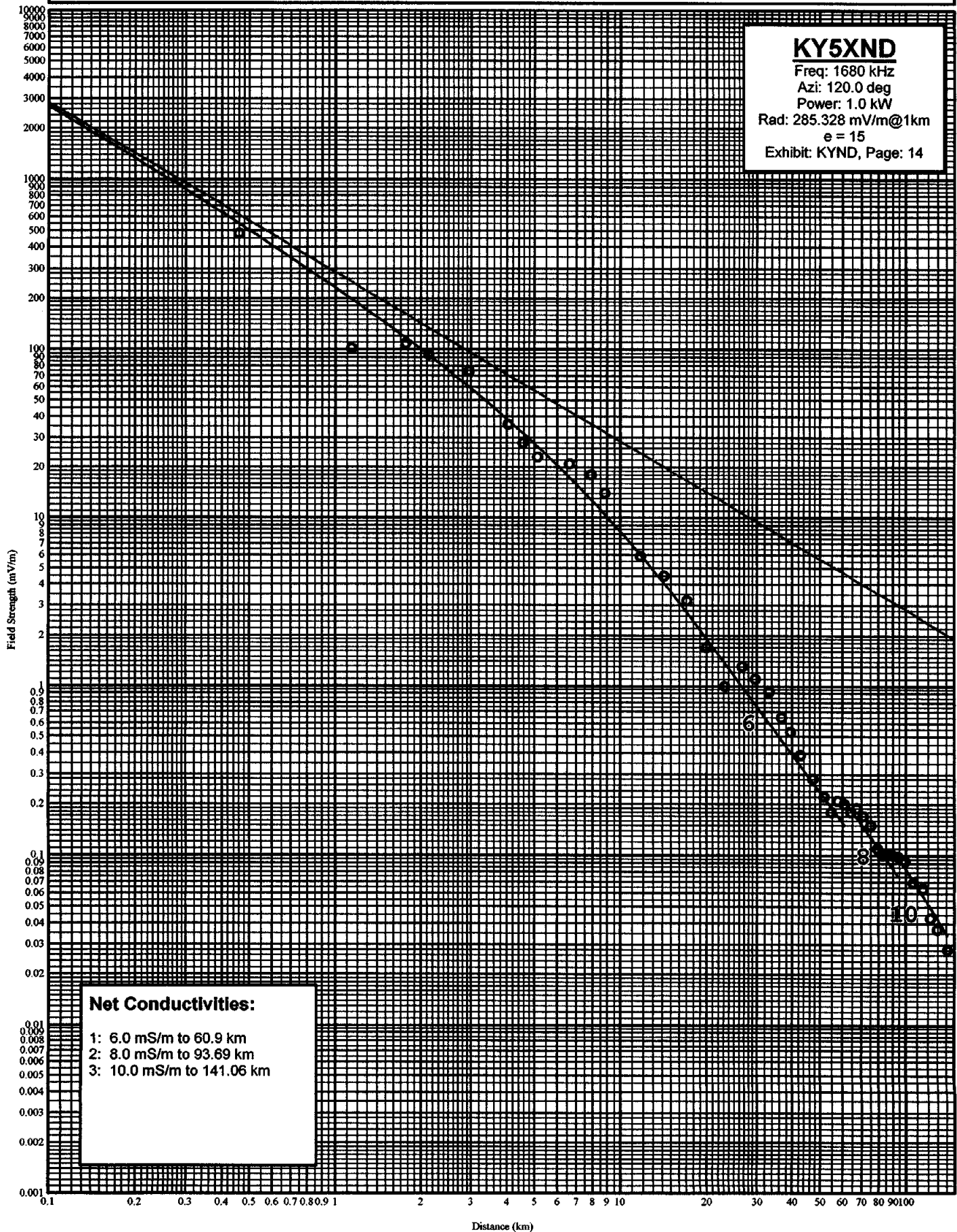
Exhibit: 1090 kHz Conductivity Radials, Page: 13

Measurements for 120.0 degrees
 KY5XND, 1680 kHz, 1.0 kW ND-D, Monaville, Texas

Point Number	Distance		Field	Notes	Date	Time
-----	(km)	(mi)	(mV/m)	-----	-----	-----
1	0.46	0.29	479.000		3/11/2009	0810
2	1.14	0.71	101.000		3/11/2009	0814
3	1.77	1.10	108.000		3/11/2009	0820
4	2.13	1.32	93.000		3/11/2009	0825
5	2.95	1.83	74.000		3/11/2009	0832
6	4.05	2.52	36.000		3/11/2009	0840
7	4.57	2.84	28.000		3/11/2009	0845
8	5.14	3.19	23.000		3/11/2009	0852
9	6.64	4.13	21.000		3/11/2009	0858
10	7.91	4.92	18.000		3/11/2009	0904
11	8.82	5.48	14.000		3/11/2009	0909
12	11.75	7.30	5.900		3/11/2009	0918
13	14.24	8.85	4.500		3/11/2009	0925
14	17.06	10.60	3.200		3/11/2009	1932
15	20.05	12.46	1.700		3/11/2009	0939
16	23.18	14.40	1.000		3/11/2009	0946
17	26.68	16.58	1.300		3/11/2009	0953
18	29.67	18.44	1.100		3/11/2009	1004
19	33.25	20.66	0.920		3/11/2009	1016
20	36.69	22.80	0.650		3/11/2009	1023
21	39.55	24.58	0.530		3/11/2009	1032
22	42.74	26.56	0.390		3/11/2009	1040
23	47.36	29.43	0.280		3/11/2009	1048
24	51.59	32.06	0.220		3/11/2009	1055
25	54.71	34.00	0.180		3/11/2009	1101
26	57.75	35.88	0.210		3/11/2009	1112
27	60.90	37.84	0.200		3/11/2009	1121
28	64.29	39.95	0.180		3/11/2009	1133
29	67.38	41.87	0.190		3/11/2009	1140
30	70.97	44.10	0.170		3/11/2009	1149
31	75.00	46.60	0.150		3/11/2009	1157
32	79.24	49.24	0.110		3/11/2009	1205
33	82.59	51.32	0.100		3/11/2009	1216
34	86.00	53.44	0.100		3/11/2009	1223
35	89.50	55.61	0.100		3/11/2009	1230
36	93.69	58.22	0.098		3/11/2009	1238
37	99.23	61.66	0.092		3/11/2009	1246
38	106.61	66.24	0.069		3/11/2009	1257
39	115.54	71.79	0.064		3/11/2009	1306
40	122.90	76.37	0.043		3/11/2009	1320
41	130.03	80.80	0.037		3/11/2009	1333
42	141.90	88.17	0.028		3/11/2009	1347

KY5XND AM Measured Field Strength

Shown With Matching Conductivity Curves
KY5XND (AM) 1680 kHz, 1.0 kW, ND-D, Monaville, Texas



Measurements for JHT Ventures, Inc.
1090 kHz, Bellville, Texas
Seeks: Make Changes in Transmitter Site/Power

Exhibit: 1090 kHz Conductivity Radials, Page: 15

Measurements for 140.0 degrees
KY5XND, 1680 kHz, 1.0 kW ND-D, Monaville, Texas

Point Number	Distance		Field	Notes	Date	Time
-----	(km)	(mi)	(mV/m)	-----	-----	-----
1	0.58	0.36	321.000		3/12/2009	0814
2	0.78	0.48	258.000		3/12/2009	0819
3	1.07	0.66	222.000		3/12/2009	0824
4	1.34	0.83	141.000		3/12/2009	0829
5	1.51	0.94	120.000		3/12/2009	0835
6	1.72	1.07	97.000		3/12/2009	0839
7	1.92	1.19	90.000		3/12/2009	0846
8	2.26	1.40	85.000		3/12/2009	0851
9	2.58	1.60	57.000		3/12/2009	0851
10	3.03	1.88	42.000		3/12/2009	0905
11	3.82	2.37	47.000		3/12/2009	0912
12	4.45	2.77	34.000		3/12/2009	0924
13	5.60	3.48	27.000		3/12/2009	0930
14	6.74	4.19	18.000		3/12/2009	0940
15	8.94	5.56	12.000		3/12/2009	0940
16	11.13	6.92	9.800		3/12/2009	0946
17	14.45	8.98	5.200		3/12/2009	0952
18	18.00	11.18	2.900		3/12/2009	1002
19	21.17	13.15	1.300		3/12/2009	1013
20	24.83	15.43	1.000		3/12/2009	1021
21	28.89	17.95	0.820		3/12/2009	1033
22	32.13	19.96	0.750		3/12/2009	1041
23	35.28	21.92	0.560		3/12/2009	1050
24	40.78	25.34	0.390		3/12/2009	1103
25	43.50	27.03	0.320		3/12/2009	1109
26	47.27	29.37	0.270		3/12/2009	1120
27	50.37	31.30	0.260		3/12/2009	1128
28	53.77	33.41	0.250		3/12/2009	1135
29	57.00	35.42	0.230		3/12/2009	1222
30	61.02	37.92	0.180		3/12/2009	1249
31	64.79	40.26	0.170		3/12/2009	1256
32	72.91	45.30	0.120		3/12/2009	1302
33	77.89	48.40	0.110		3/12/2009	1314
34	81.59	50.70	0.100		3/12/2009	1325
35	85.31	53.01	0.097		3/12/2009	1242
36	91.81	57.05	0.069		3/12/2009	1357
37	95.61	59.41	0.063		3/12/2009	1308
38	99.58	61.88	0.071		3/12/2009	1308
39	109.95	68.32	0.058		3/12/2009	1323
40	123.30	76.62	0.046		3/12/2009	1345

KY5XND AM Measured Field Strength

Shown With Matching Conductivity Curves
KY5XND (AM), 1680 kHz, 1.0 kW, ND-D, Monaville, Texas

KY5XND

Freq: 1680 kHz

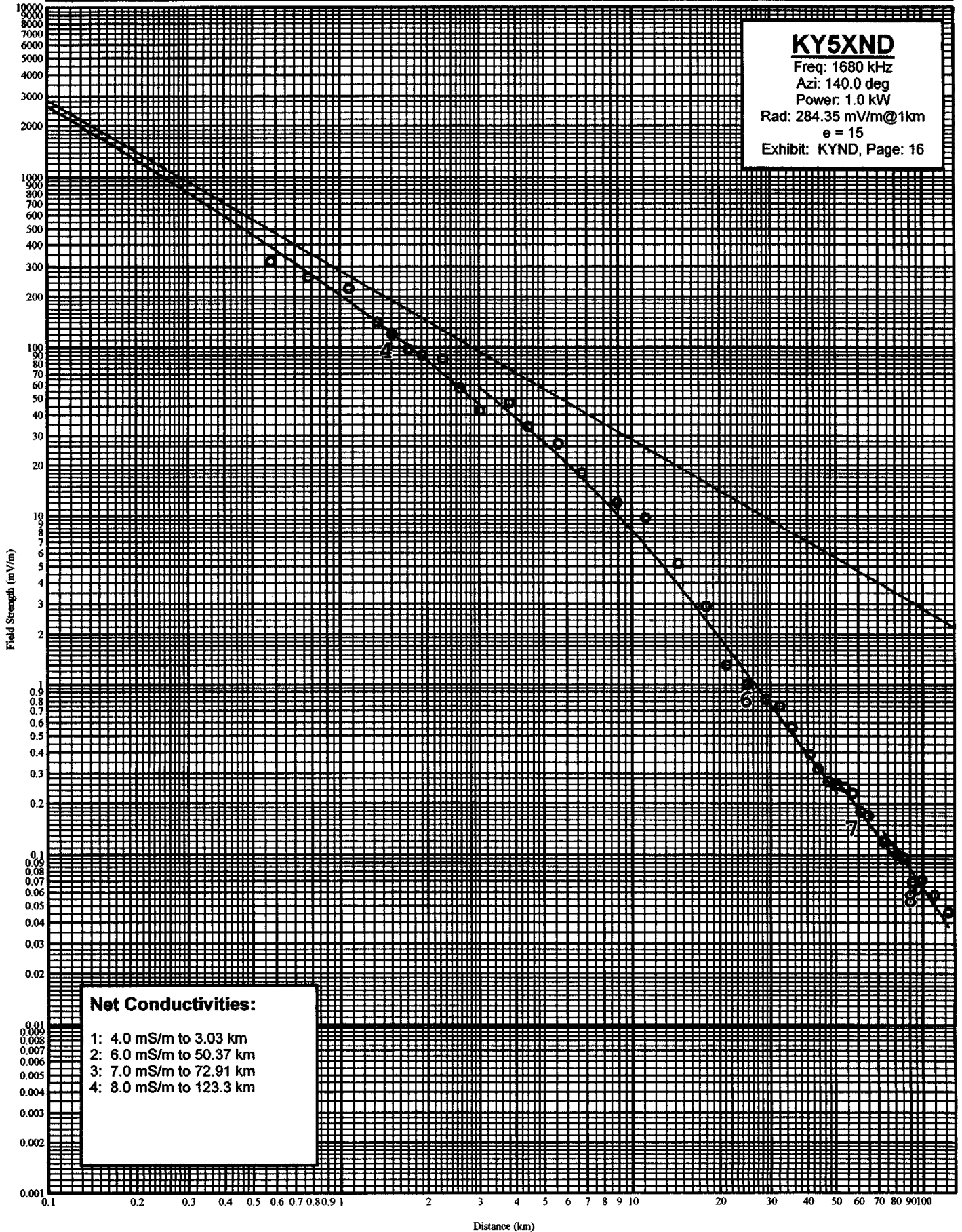
Azi: 140.0 deg

Power: 1.0 kW

Rad: 284.35 mV/m@1km

$\epsilon = 15$

Exhibit: KYND, Page: 16



Measurements for JHT Ventures, Inc.
 1090 kHz, Bellville, Texas
 Seeks: Make Changes in Transmitter Site/Power

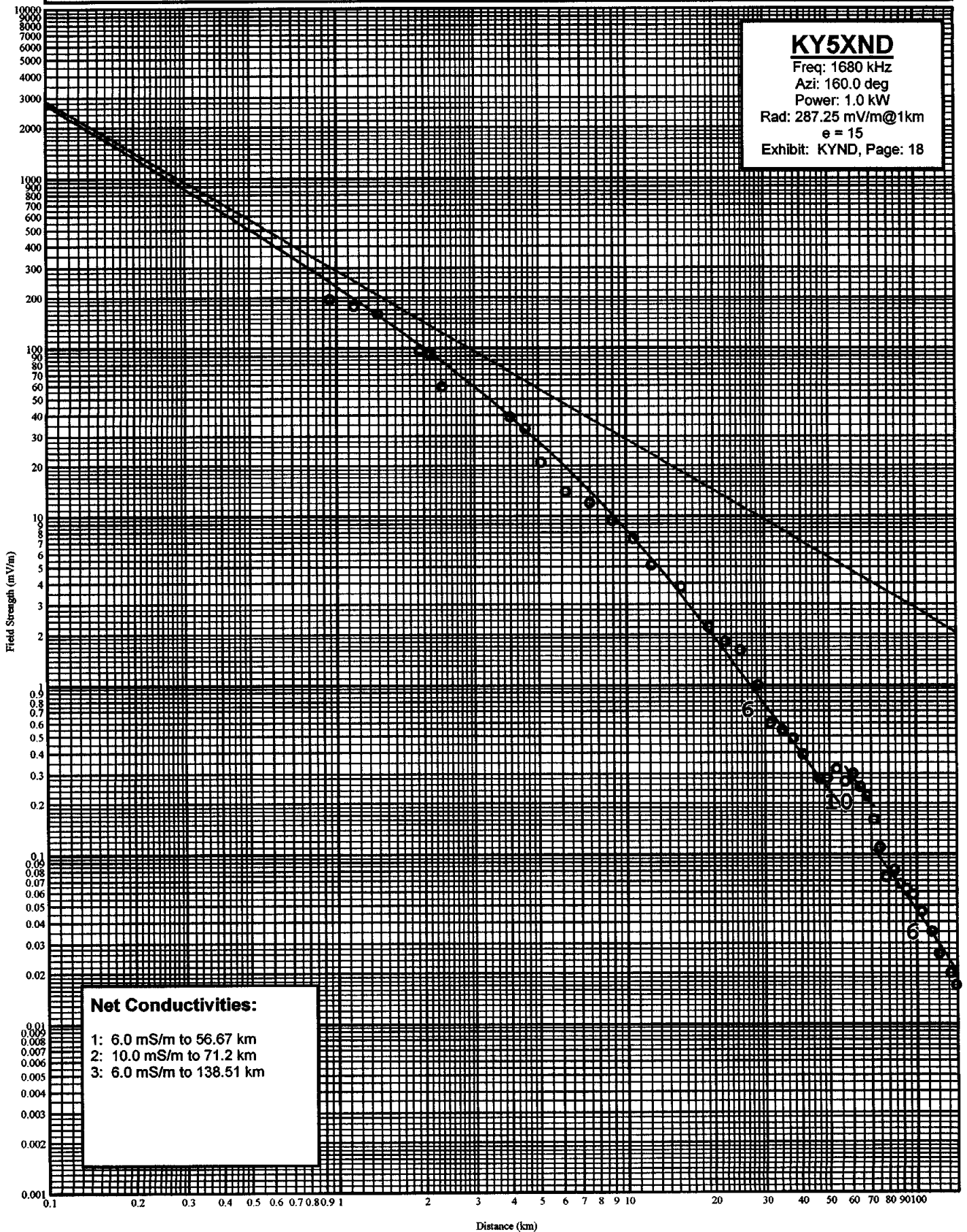
Exhibit: 1090 kHz Conductivity Radials, Page: 17

Measurements for 160.0 degrees
 KY5XND, 1680 kHz, 1.0 kW ND-D, Monaville, Texas

Point Number	Distance		Field	Notes	Date	Time
-----	(km)	(mi)	(mV/m)	-----	-----	-----
1	0.95	0.59	194.000		3/13/2009	0806
2	1.15	0.71	178.000		3/13/2009	0810
3	1.40	0.87	160.000		3/13/2009	0821
4	1.94	1.21	96.000		3/13/2009	0826
5	2.11	1.31	91.000		3/13/2009	0832
6	2.32	1.44	59.000		3/13/2009	0838
7	4.00	2.49	39.000		3/13/2009	0851
8	4.50	2.80	33.000		3/13/2009	0857
9	5.10	3.17	21.000		3/13/2009	0903
10	6.20	3.85	14.000		3/13/2009	0912
11	7.52	4.67	12.000		3/13/2009	0920
12	8.97	5.57	9.400		3/13/2009	0927
13	10.58	6.57	7.300		3/13/2009	0935
14	12.23	7.60	5.100		3/13/2009	0944
15	15.44	9.59	3.800		3/13/2009	0956
16	19.22	11.94	2.200		3/13/2009	1012
17	21.90	13.61	1.800		3/13/2009	1021
18	24.72	15.36	1.600		3/13/2009	1046
19	28.25	17.55	1.000		3/13/2009	1100
20	31.20	19.39	0.590		3/13/2009	1108
21	34.28	21.30	0.540		3/13/2009	1120
22	37.57	23.34	0.480		3/13/2009	1228
23	40.65	25.26	0.390		3/13/2009	1239
24	46.23	28.73	0.280		3/13/2009	1255
25	49.26	30.61	0.280		3/13/2009	1303
26	52.89	32.86	0.320		3/13/2009	1349
27	56.67	35.21	0.270		3/13/2009	1401
28	60.23	37.43	0.300		3/13/2009	1410
29	63.89	39.70	0.250		3/13/2009	1417
30	67.52	41.95	0.220		3/13/2009	1425
31	71.21	44.25	0.160		3/13/2009	1432
32	74.86	46.52	0.110		3/13/2009	1442
33	78.42	48.73	0.074		3/13/2009	1456
34	84.09	52.25	0.081		3/13/2009	1508
35	88.16	54.78	0.067		3/13/2009	1522
36	92.58	57.53	0.062		3/13/2009	1534
37	97.61	60.65	0.058		3/13/2009	1542
38	104.51	64.94	0.046		3/13/2009	1553
39	113.57	70.57	0.035		3/13/2009	1605
40	120.31	74.76	0.026		3/13/2009	1620
41	131.88	81.95	0.020		3/13/2009	1635
42	138.51	86.07	0.017		3/13/2009	1650

KY5XND AM Measured Field Strength

Shown With Matching Conductivity Curves
KY5XND (AM 1680 kHz, 1.0 kW, ND-D, Monaville, Texas)



Measurements for JHT Ventures, Inc.
 1090 kHz, Bellville, Texas
 Seeks: Make Changes in Transmitter Site/Power

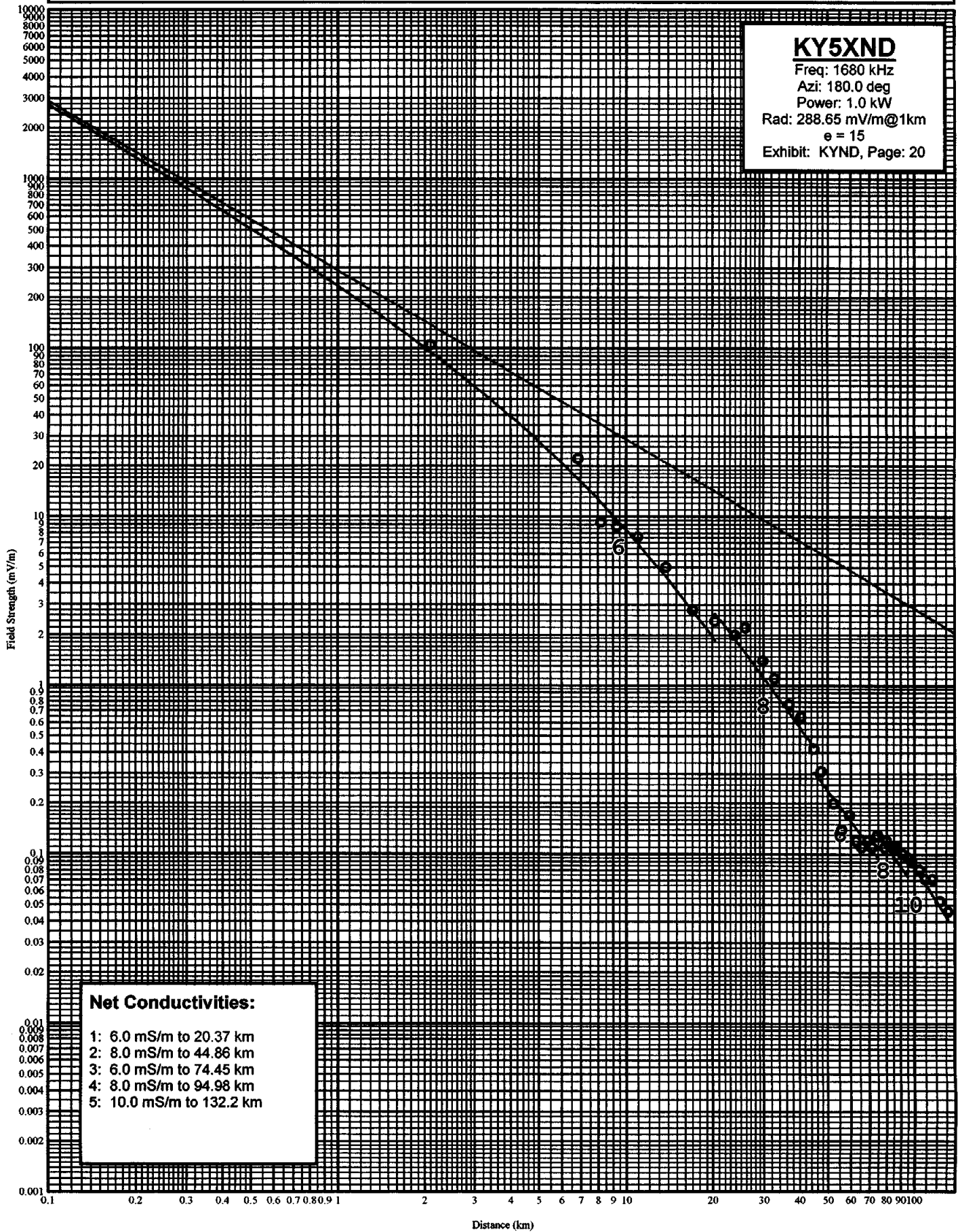
Exhibit: 1090 kHz Conductivity Radials, Page: 19

Measurements for 180.0 degrees
 KY5XND, 1680 kHz, 1.0 kW ND-D, Monaville, Texas

Point Number	Distance		Field	Notes	Date	Time
-----	(km)	(mi)	(mV/m)	-----	-----	-----
1	2.10	1.30	104.000		3/26/2009	0914
2	6.83	4.24	22.000		3/26/2009	0936
3	8.21	5.10	9.300		3/26/2009	0942
4	9.31	5.78	8.800		3/26/2009	0947
5	10.99	6.83	7.600		3/26/2009	1022
6	13.80	8.57	5.000		3/26/2009	1036
7	17.04	10.59	2.800		3/26/2009	1045
8	20.37	12.66	2.400		3/26/2009	1053
9	23.83	14.81	2.000		3/26/2009	1100
10	25.97	16.14	2.200		3/26/2009	1108
11	29.79	18.51	1.400		3/26/2009	1122
12	32.69	20.31	1.100		3/26/2009	1130
13	36.85	22.90	0.770		3/26/2009	1147
14	40.33	25.06	0.650		3/26/2009	1153
15	44.86	27.87	0.420		3/26/2009	1204
16	47.61	29.58	0.310		3/26/2009	1211
17	52.54	32.65	0.200		3/26/2009	1219
18	55.80	34.67	0.140		3/26/2009	1227
19	59.43	36.93	0.170		3/26/2009	1235
20	62.50	38.84	0.120		3/26/2009	1242
21	65.49	40.69	0.110		3/26/2009	1257
22	68.91	42.82	0.120		3/26/2009	1305
23	71.45	44.40	0.110		3/26/2009	1352
24	74.41	46.24	0.130		3/26/2009	1400
25	78.76	48.94	0.110		3/26/2009	1422
26	80.09	49.77	0.120		3/26/2009	1430
27	84.14	52.28	0.110		3/26/2009	1443
28	91.13	56.63	0.100		3/26/2009	1502
29	87.17	54.16	0.110		3/26/2009	1451
30	94.98	59.02	0.096		3/26/2009	1510
31	97.92	60.84	0.090		3/26/2009	1516
32	104.33	64.83	0.081		3/26/2009	1525
33	109.41	67.98	0.071		3/26/2009	1534
34	116.16	72.18	0.071		3/26/2009	1545
35	123.29	76.61	0.053		3/26/2009	1558
36	132.20	82.15	0.046		3/26/2009	1607

KY5XND AM Measured Field Strength

Shown With Matching Conductivity Curves
KY5XND (AM), 1680 kHz, 1.0 kW, ND-D, Monaville, Texas



Measurements for JHT Ventures, Inc.
1090 kHz, Bellville, Texas
Seeks: Make Changes in Transmitter Site/Power

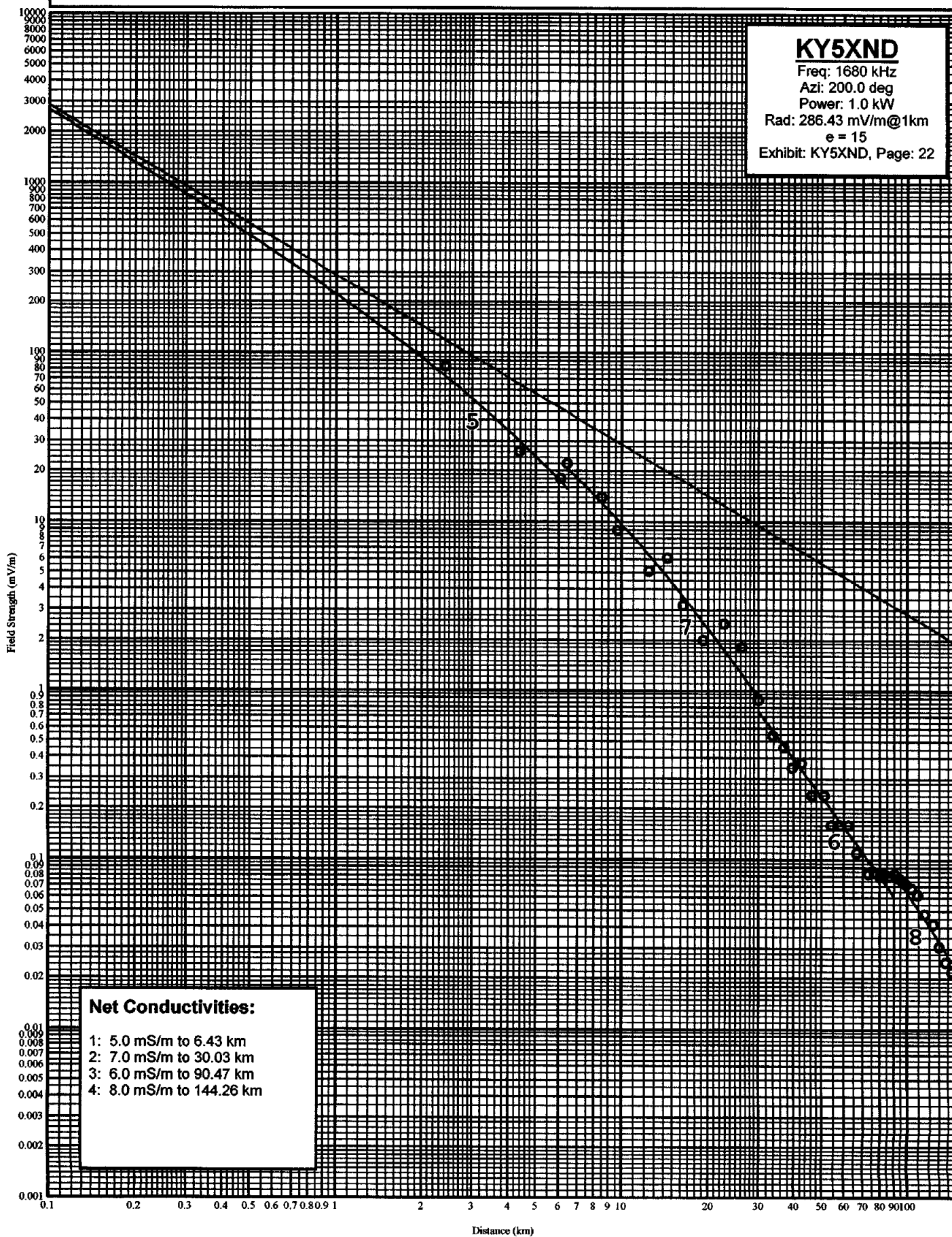
Exhibit: 1090 kHz Conductivity Radials, Page: 21

Measurements for 200.0 degrees
KY5XND, 1680 kHz, 1.0 kW ND-D, Monaville, Texas

Point Number	Distance (km)	(mi)	Field (mV/m)	Notes	Date	Time
-----	-----	-----	-----	-----	-----	-----
1	2.41	1.50	83.000		4/12/2009	0902
2	4.39	2.73	26.000		4/12/2009	0923
3	6.10	3.79	18.000		4/12/2009	0930
4	6.43	4.00	22.000		4/12/2009	0934
5	8.54	5.31	14.000		4/12/2009	0942
6	9.69	6.02	8.900		4/12/2009	0946
7	12.44	7.73	5.100		4/12/2009	0953
8	14.47	8.99	6.100		4/12/2009	0959
9	16.36	10.17	3.200		4/12/2009	1006
10	19.34	12.02	2.000		4/12/2009	1015
11	22.86	14.20	2.500		4/12/2009	1022
12	26.39	16.40	1.800		4/12/2009	1027
13	30.03	18.66	0.880		4/12/2009	1034
14	33.65	20.91	0.540		4/12/2009	1041
15	36.85	22.90	0.460		4/12/2009	1048
16	39.50	24.54	0.350		4/12/2009	1056
17	42.49	26.40	0.370		4/12/2009	1105
18	46.34	28.79	0.240		4/12/2009	1114
19	51.04	31.71	0.240		4/12/2009	1123
20	54.11	33.62	0.160		4/12/2009	1131
21	58.42	36.30	0.160		4/12/2009	1136
22	62.08	38.57	0.160		4/12/2009	1143
23	62.08	38.57	0.160		4/12/2009	1202
24	66.62	41.40	0.110		4/12/2009	1211
25	73.05	45.39	0.083		4/12/2009	1218
26	77.11	47.91	0.084		4/12/2009	1225
27	80.44	49.98	0.080		4/12/2009	1234
28	83.32	51.77	0.082		4/12/2009	1242
29	86.61	53.82	0.080		4/12/2009	1249
30	90.47	56.22	0.082		4/12/2009	1300
31	93.87	58.33	0.078		4/12/2009	1310
32	96.20	59.78	0.075		4/12/2009	1317
33	99.61	61.89	0.072		4/12/2009	1225
34	103.90	64.56	0.068		4/12/2009	1332
35	109.12	67.80	0.062		4/12/2009	1342
36	115.63	71.85	0.048		4/12/2009	1350
37	123.84	76.95	0.042		4/12/2009	1403
38	129.86	80.69	0.031		4/12/2009	1414
39	137.07	85.17	0.025		4/12/2009	1424
40	144.26	89.64	0.022		4/12/2009	1440

KY5XND AM Measured Field Strength

Shown With Matching Conductivity Curves
KY5XND (AM), 1680 kHz, 1.0 kW, ND-D, Monaville, Texas



Measurements for JHT Ventures, Inc.
1090 kHz, Bellville, Texas
Seeks: Make Changes in Transmitter Site/Power

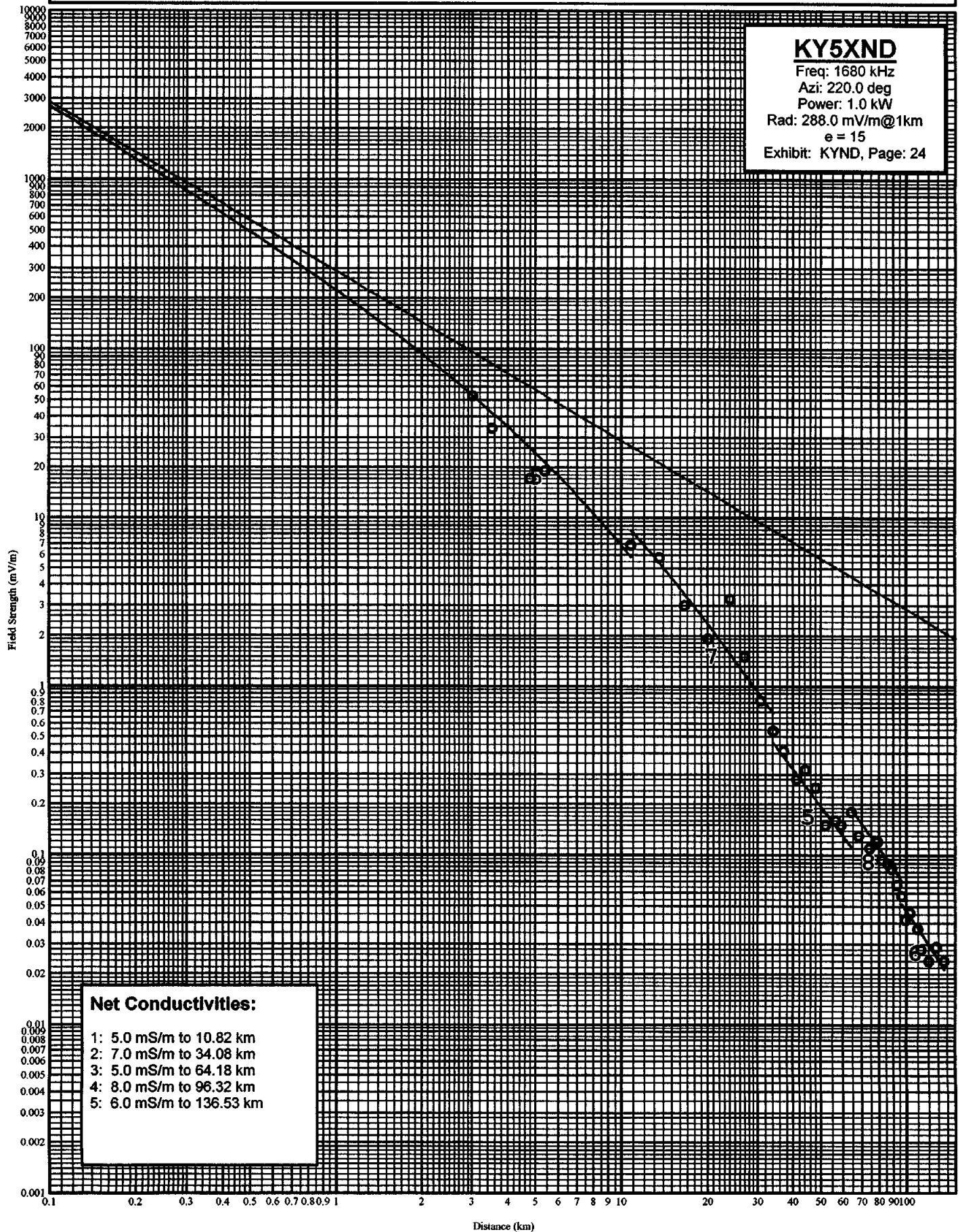
Exhibit: 1090 kHz Conductivity Radials, Page: 23

Measurements for 220.0 degrees
KY5XND, 1680 kHz, 1.0 kW ND-D, Monaville, Texas

Point Number	Distance		Field	Notes	Date	Time
-----	(km)	(mi)	(mV/m)			
1	3.01	1.87	53.000		4/12/2009	0906
2	3.54	2.20	34.000		4/12/2009	0909
3	4.79	2.98	17.000		4/12/2009	0914
4	5.40	3.36	19.000		4/12/2009	0919
5	10.82	6.72	6.900		4/13/2009	0901
6	13.55	8.42	5.800		4/13/2009	0910
7	16.67	10.36	3.000		4/13/2009	0921
8	20.12	12.50	1.900		4/13/2009	0932
9	24.09	14.97	3.300		4/13/2009	0940
10	27.00	16.78	1.500		4/13/2009	0947
11	30.84	19.16	0.820		4/13/2009	0955
12	34.08	21.18	0.540		4/13/2009	1004
13	37.16	23.09	0.410		4/13/2009	1012
14	41.18	25.59	0.280		4/13/2009	1021
15	44.10	27.40	0.320		4/13/2009	1030
16	47.93	29.78	0.250		4/13/2009	1038
17	51.97	32.29	0.150		4/13/2009	1050
18	56.69	35.23	0.160		4/13/2009	1102
19	58.96	36.64	0.150		4/13/2009	1110
20	64.18	39.88	0.180		4/13/2009	1121
21	68.00	42.25	0.130		4/13/2009	1133
22	74.54	46.32	0.110		4/13/2009	1142
23	79.23	49.23	0.120		4/13/2009	1200
24	82.19	51.07	0.094		4/13/2009	1211
25	86.20	53.56	0.089		4/13/2009	1222
26	88.90	55.24	0.083		4/13/2009	1228
27	93.00	57.79	0.067		4/13/2009	1235
28	96.32	59.85	0.058		4/13/2009	1241
29	99.46	61.80	0.042		4/13/2009	1248
30	103.19	64.12	0.046		4/13/2009	1256
31	109.74	68.19	0.037		4/13/2009	1312
32	113.04	70.24	0.028		4/13/2009	1322
33	120.48	74.86	0.024		4/12/2009	1535
34	128.30	79.72	0.029		4/12/2009	1526
35	136.53	84.84	0.024		4/12/2009	1520

KY5XND AM Measured Field Strength

Shown With Matching Conductivity Curves
KY5XND (AM) 1680 kHz, 1.0 kW, ND-D, Monaville, Texas



Measurements for JHT Ventures, Inc.
 1090 kHz, Bellville, Texas
 Seeks: Make Changes in Transmitter Site/Power

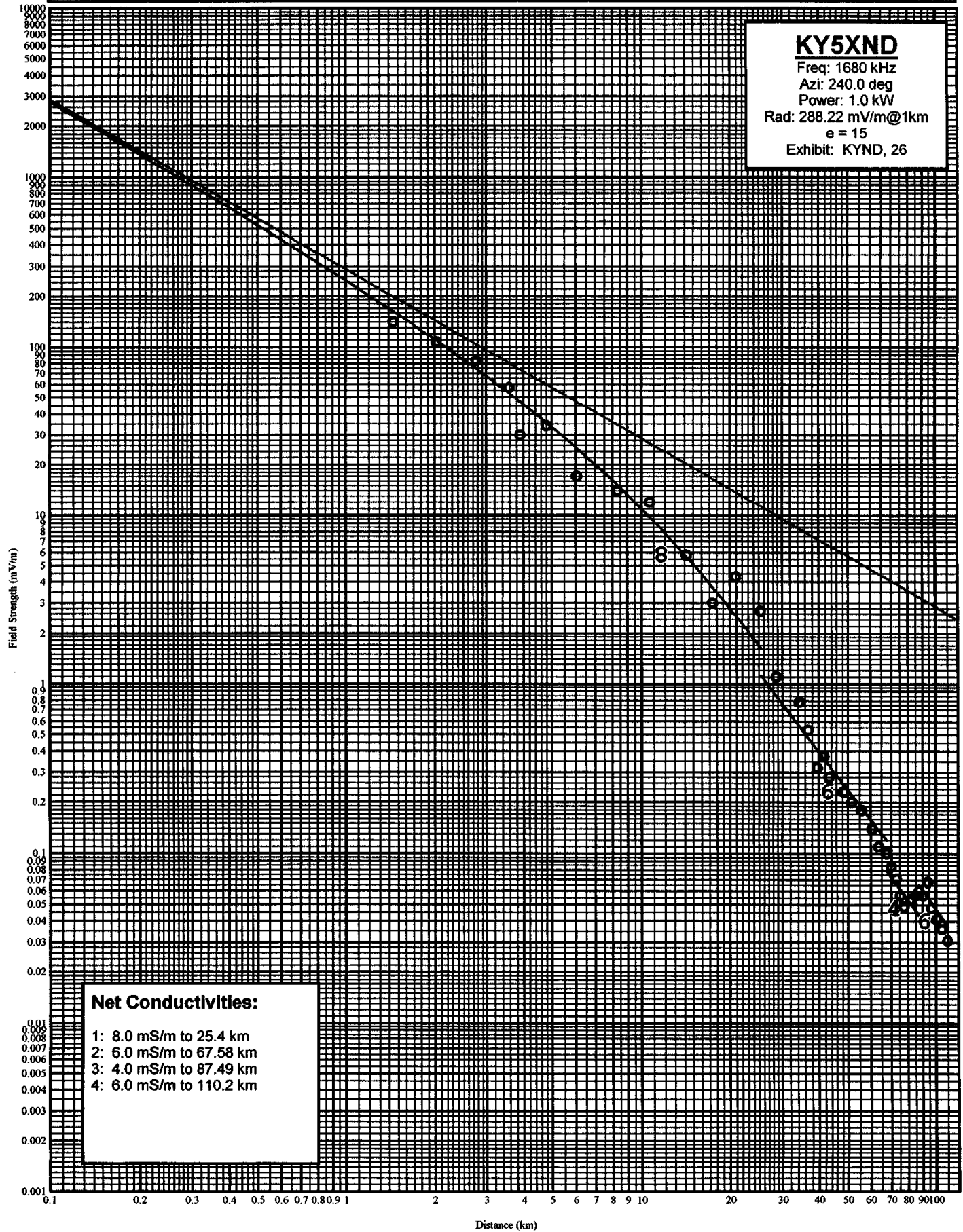
Exhibit: 1090 kHz Conductivity Radials, Page: 25

Measurements for 240.0 degrees
 KY5XND, 1680 kHz, 1.0 kW ND-D, Monaville, Texas

Point Number	Distance		Field	Notes	Date	Time
-----	(km)	(mi)	(mV/m)	-----	-----	-----
1	1.45	0.90	140.000		3/30/2009	0912
2	2.03	1.26	107.000		3/30/2009	0917
3	2.78	1.73	83.000		3/30/2009	0923
4	3.59	2.23	57.000		3/30/2009	0927
5	3.91	2.43	30.000		3/30/2009	0931
6	4.79	2.98	34.000		3/30/2009	0936
7	6.06	3.77	17.000		3/30/2009	0942
8	8.33	5.18	14.000		3/30/2009	0950
9	10.72	6.66	12.000		3/30/2009	1002
10	14.24	8.85	5.800		3/30/2009	1015
11	17.45	10.84	3.000		3/30/2009	1023
12	20.91	12.99	4.300		3/30/2009	1034
13	25.40	15.78	2.700		3/30/2009	0102
14	28.72	17.85	1.100		3/30/2009	1053
15	34.36	21.35	0.780		3/30/2009	1102
16	36.91	22.93	0.530		3/30/2009	1114
17	39.60	24.61	0.320		3/30/2009	1120
18	41.58	25.84	0.370		3/30/2009	1127
19	43.49	27.02	0.280		3/30/2009	1135
20	48.47	30.12	0.230		3/30/2009	1149
21	51.55	32.03	0.200		3/30/2009	1154
22	55.76	34.65	0.180		3/30/2009	1258
23	60.47	37.57	0.140		3/30/2009	1305
24	63.77	39.62	0.110		3/30/2009	1309
25	67.58	41.99	0.100		3/30/2009	1315
26	70.31	43.69	0.084		3/30/2009	1322
27	73.16	45.46	0.071		3/30/2009	1330
28	75.32	46.80	0.057		3/30/2009	1334
29	77.80	48.34	0.049		3/30/2009	1340
30	81.76	50.80	0.054		3/30/2009	1356
31	85.21	52.95	0.057		3/30/2009	1403
32	87.49	54.36	0.060		3/30/2009	1410
33	90.76	56.40	0.057		3/30/2009	1417
34	94.03	58.43	0.068		3/30/2009	1425
35	96.98	60.26	0.048		3/30/2009	1435
36	100.91	62.70	0.041		3/30/2009	1443
37	105.26	65.41	0.036		3/30/2009	1452
38	110.20	68.48	0.031		3/30/2009	1500

KY5XND AM Measured Field Strength

Shown With Matching Conductivity Curves
KY5XnND (AM), 1680 kHz, 1.0 kW, ND-D, Monaville, Texas



Measurements for JHT Ventures, Inc.
 1090 kHz, Bellville, Texas
 Seeks: Make Changes in Transmitter Site/Power

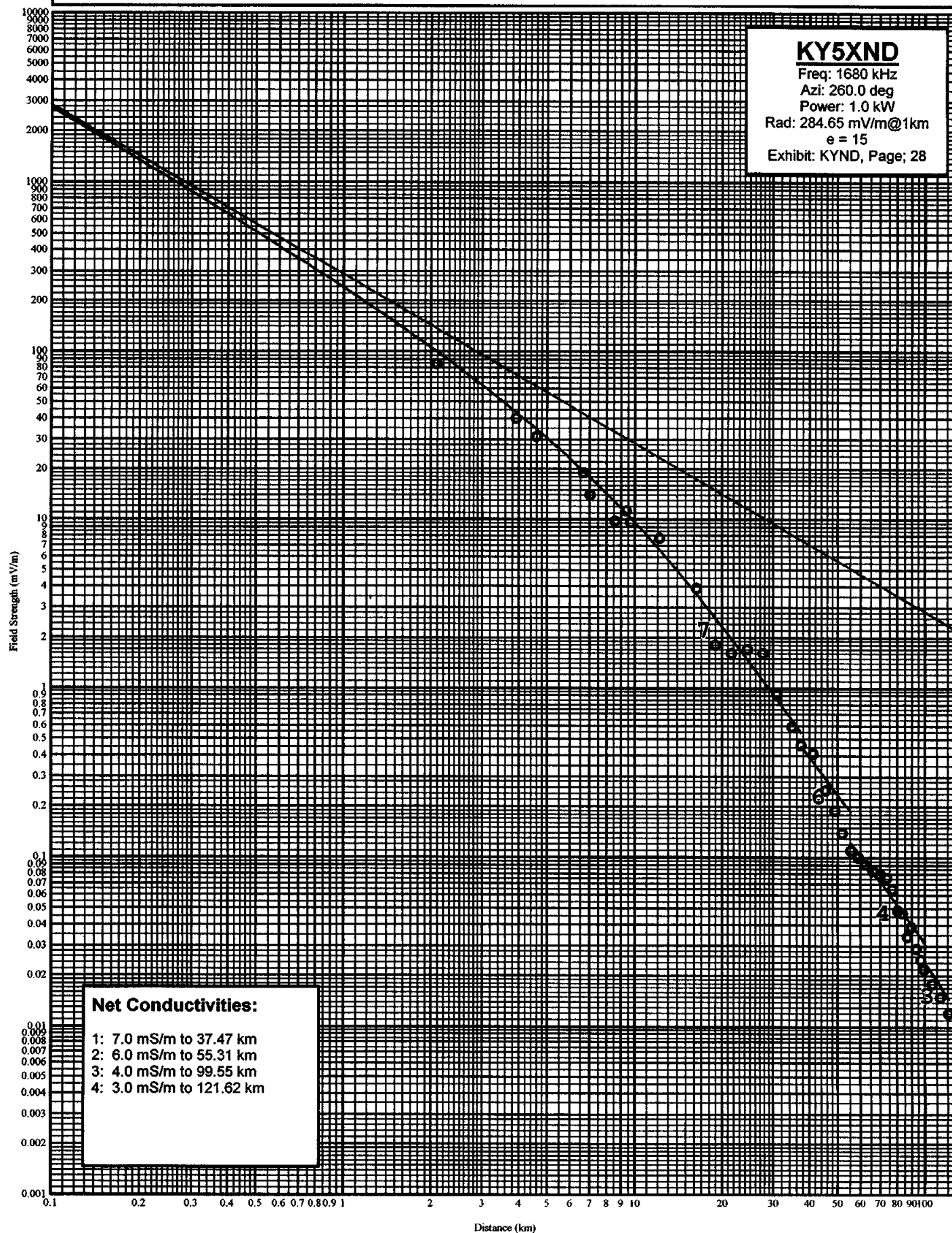
Exhibit: 1090 kHz Conductivity Radials, Page: 27

Measurements for 260.0 degrees
 KY5XND, 1680 kHz, 1.0 kW ND-D, Monaville, Texas

Point Number	Distance (km)	(mi)	Field (mV/m)	Notes	Date	Time
-----	-----	-----	-----	-----	-----	-----
1	2.09	1.30	84.000		4/7/2009	1516
2	3.92	2.44	40.000		4/7/2009	1521
3	4.60	2.86	31.000		4/7/2009	1525
4	6.69	4.16	19.000		4/7/2009	1530
5	7.03	4.37	14.000		4/7/2009	1534
6	8.59	5.34	9.800		4/7/2009	1540
7	9.36	5.82	11.300		4/7/2009	1312
8	9.70	6.03	9.600		4/7/2009	1308
9	12.21	7.59	7.700		4/7/2009	1522
10	16.32	10.14	3.900		4/7/2009	1551
11	18.99	11.80	1.800		4/7/2009	1604
12	21.66	13.46	1.600		4/7/2009	1612
13	24.51	15.23	1.700		4/7/2009	1620
14	27.65	17.18	1.600		4/7/2009	1627
15	30.91	19.21	0.910		4/7/2009	1635
16	34.82	21.64	0.590		4/7/2009	1642
17	37.47	23.28	0.460		4/7/2009	1650
18	41.29	25.66	0.410		4/7/2009	1656
19	45.62	28.35	0.250		4/7/2009	1703
20	48.83	30.34	0.190		4/8/2009	0926
21	51.75	32.16	0.140		4/8/2009	0938
22	55.31	34.37	0.110		4/8/2009	0946
23	58.98	36.65	0.100		4/8/2009	0957
24	62.37	38.75	0.091		4/8/2009	1005
25	66.35	41.23	0.083		4/8/2009	1032
26	69.92	43.45	0.079		4/8/2009	1045
27	73.44	45.63	0.076		4/8/2009	1101
28	77.04	47.87	0.065		4/8/2009	1110
29	80.35	49.93	0.049		4/8/2009	1116
30	83.41	51.83	0.047		4/8/2009	1128
31	86.76	53.91	0.034		4/8/2009	1135
32	89.61	55.68	0.039		4/8/2009	1143
33	93.61	58.17	0.029		4/8/2009	1152
34	96.65	60.06	0.025		4/8/2009	1201
35	99.55	61.86	0.022		4/8/2009	1208
36	106.08	65.92	0.018		4/8/2009	1218
37	113.58	70.58	0.015		4/8/2009	1226
38	121.62	75.57	0.012		4/8/2009	1237

KY5XND AM Measured Field Strength

Shown With Matching Conductivity Curves
KY5XND (AM), 1680 kHz, 1.0 kW, ND-D, Monaville, Texas



Measurements for JHT Ventures, Inc.
 1090 kHz, Bellville, Texas
 Seeks: Make Changes in Transmitter Site/Power

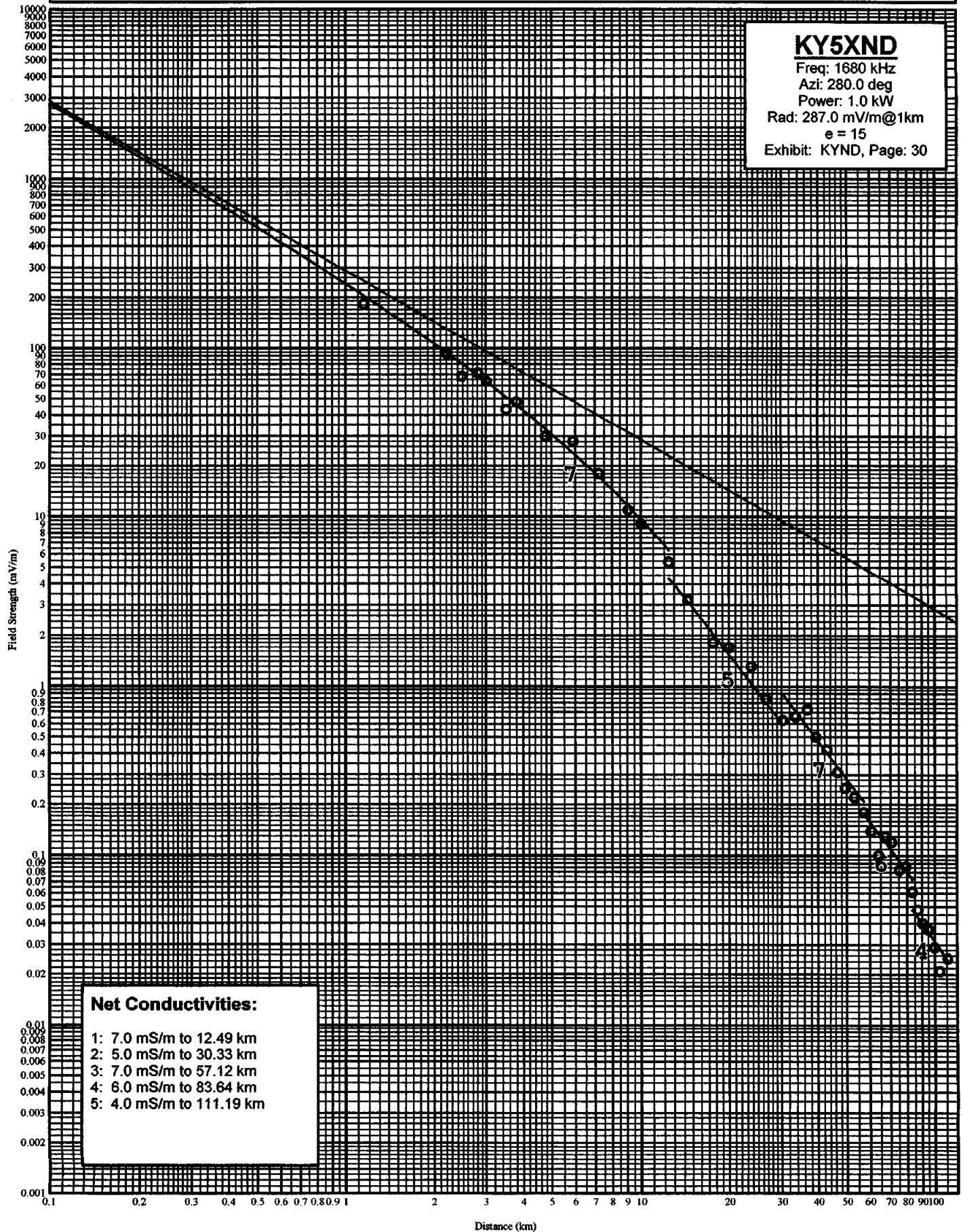
Exhibit: 1090 kHz Conductivity Radials, Page: 29

Measurements for 280.0 degrees
 KY5XND, 1680 kHz, 1.0 kW ND-D, Monaville, Texas

Point Number	Distance		Field	Notes	Date	Time
-----	(km)	(mi)	(mV/m)	-----	-----	-----
1	1.15	0.71	183.000		3/28/2009	0804
2	2.22	1.38	92.000		3/28/2009	0817
3	2.49	1.55	68.000		3/28/2009	0822
4	2.82	1.75	71.000		3/28/2009	0827
5	3.01	1.87	63.000		3/28/2009	0832
6	3.50	2.17	43.000		3/28/2009	0836
7	3.80	2.36	48.000		3/28/2009	0841
8	4.78	2.97	30.000		3/28/2009	0846
9	5.91	3.67	28.000		3/28/2009	0853
10	7.20	4.47	18.000		3/28/2009	0900
11	9.09	5.65	11.000		3/28/2009	0907
12	10.04	6.24	9.100		3/28/2009	0912
13	12.49	7.76	5.400		3/28/2009	0920
14	14.48	9.00	3.200		3/28/2009	0929
15	17.69	10.99	1.800		3/28/2009	0938
16	19.93	12.38	1.700		3/28/2009	0946
17	23.79	14.78	1.300		3/28/2009	0955
18	26.74	16.62	0.840		3/28/2009	1002
19	30.33	18.85	0.630		3/28/2009	1010
20	33.64	20.90	0.660		3/28/2009	1017
21	36.85	22.90	0.730		3/28/2009	1026
22	39.41	24.49	0.500		3/28/2009	1045
23	42.95	26.69	0.420		3/28/2009	1054
24	46.71	29.02	0.310		3/28/2009	1102
25	49.65	30.85	0.250		3/28/2009	1102
26	53.16	33.03	0.220		3/28/2009	1121
27	57.12	35.49	0.180		3/28/2009	1130
28	60.51	37.60	0.140		3/28/2009	1130
29	64.00	39.77	0.100		3/28/2009	1138
30	67.38	41.87	0.130		3/28/2009	1146
31	70.89	44.05	0.120		3/28/2009	1155
32	75.45	46.88	0.082		3/28/2009	1203
33	79.13	49.17	0.086		3/28/2009	1212
34	83.64	51.97	0.061		3/28/2009	1224
35	87.22	54.20	0.048		3/28/2009	1237
36	90.62	56.31	0.040		3/28/2009	1245
37	94.87	58.95	0.037		3/28/2009	1256
38	99.86	62.05	0.029		3/28/2009	1310
39	104.10	64.68	0.021		3/28/2009	1323
40	111.19	69.09	0.025		3/28/2009	1335

KY5XND AM Measured Field Strength

Shown With Matching Conductivity Curves
KY5XND (AM), 1680 kHz, 1.0 kW, ND-D, Monaville, Texas



Measurements for JHT Ventures, Inc.
1090 kHz, Bellville, Texas
Seeks: Make Changes in Transmitter Site/Power

Exhibit: 1090 kHz Conductivity Radials, Page: 31

Measurements for 300.0 degrees
KY5XND, 1680 kHz, 1.0 kW ND-D, Monaville, Texas

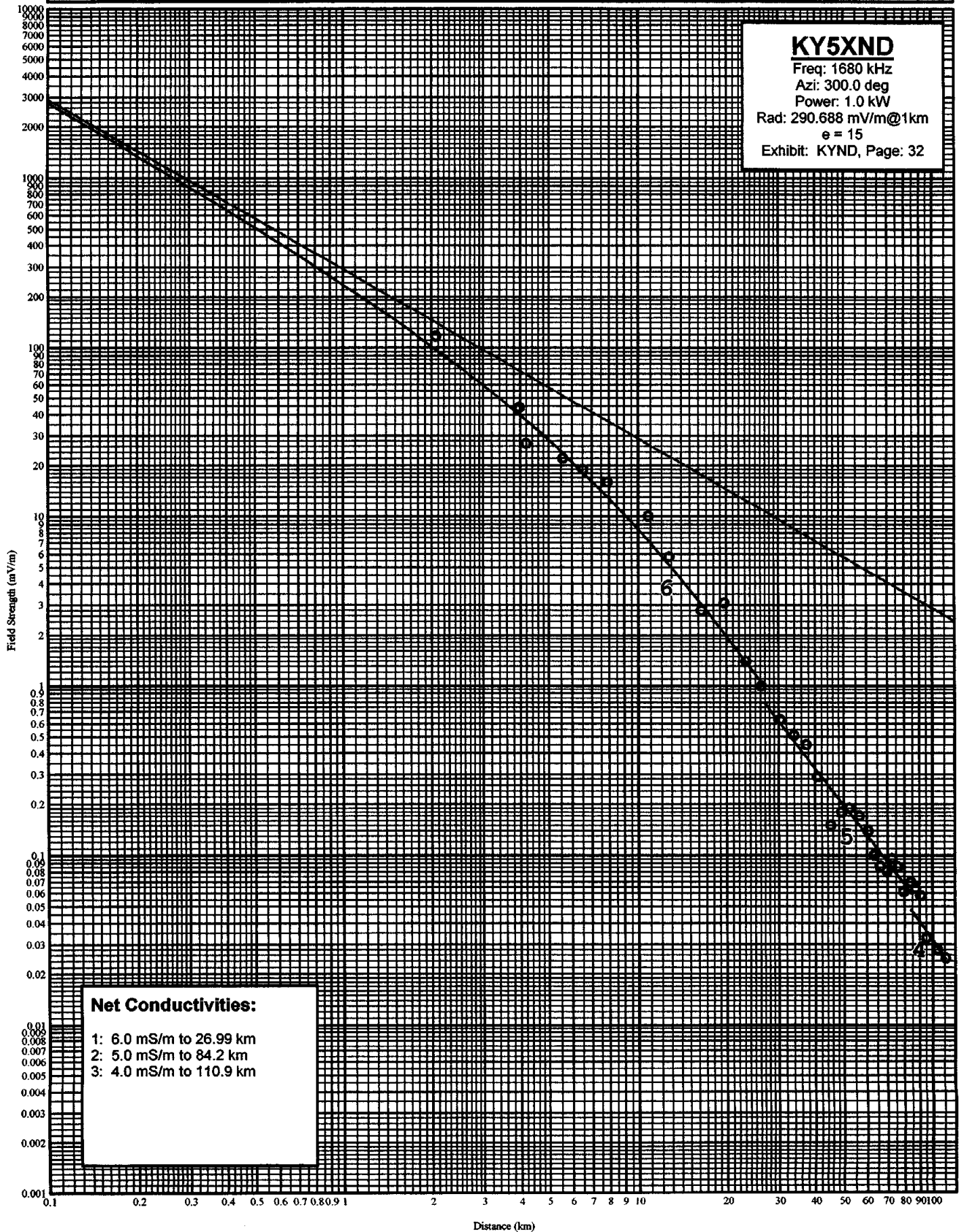
Point Number	Distance (km)	(mi)	Field (mV/m)	Notes	Date	Time
-----	-----	-----	-----	-----	-----	-----
1	2.07	1.29	116.000		4/6/2009	0832
2	3.99	2.48	44.000		4/7/2009	1104
3	4.19	2.60	27.000		4/7/2009	1115
4	5.60	3.48	22.000		4/7/2009	1111
5	6.55	4.07	19.000		4/7/2009	1121
6	7.92	4.92	16.000		4/7/2009	1127
7	10.87	6.75	10.000		4/7/2009	1135
8	12.81	7.96	5.800		4/7/2009	1142
9	16.46	10.23	2.800		4/7/2009	1147
10	19.69	12.23	3.100		4/7/2009	1456
11	23.23	14.43	1.400		4/7/2009	1504
12	26.32	16.35	1.000		4/7/2009	1512
13	30.53	18.97	0.630		4/7/2009	1520
14	33.96	21.10	0.510		4/7/2009	1526
15	37.36	23.21	0.450		4/7/2009	1534
16	40.71	25.30	0.290		4/7/2009	1542
17	45.30	28.15	0.150		4/7/2009	1550
18	49.24	30.60	0.180		4/7/2009	1602
19	52.55	32.65	0.190		4/7/2009	1612
20	56.48	35.10	0.170		4/7/2009	1618
21	60.46	37.57	0.140		4/7/2009	1625
22	63.35	39.36	0.100		4/7/2009	1632
23	66.40	41.26	0.086		4/7/2009	1640
24	69.63	43.27	0.081		4/7/2009	1647
25	72.81	45.24	0.096		4/7/2009	1655
26	76.09	47.28	0.085		4/7/2009	1703
27	79.88	49.64	0.061		4/7/2009	1711
28	84.20	52.32	0.069		4/7/2009	1717
29	87.54	54.39	0.064		4/7/2009	1726
30	90.83	56.44	0.058		4/7/2009	1733
31	95.14	59.12	0.033		4/7/2009	1739
32	103.75	64.47	0.028		4/7/2009	1741
33	110.90	68.91	0.025		4/7/2009	1759

KY5XND AM Measured Field Strength

Shown With Matching Conductivity Curves
KY5XND (AM) 1680 kHz, 1.0 kW, ND-D, Monaville, Texas

KY5XND

Freq: 1680 kHz
Azi: 300.0 deg
Power: 1.0 kW
Rad: 290.688 mV/m@1km
 $\epsilon = 15$
Exhibit: KYND, Page: 32



Measurements for JHT Ventures, Inc.
1090 kHz, Bellville, Texas
Seeks: Make Changes in Transmitter Site/Power

Exhibit: 1090 kHz Conductivity Radials, Page: 33

Measurements for 320.0 degrees
KY5XND, 1680 kHz, 1.0 kW ND-D, Monaville, Texas

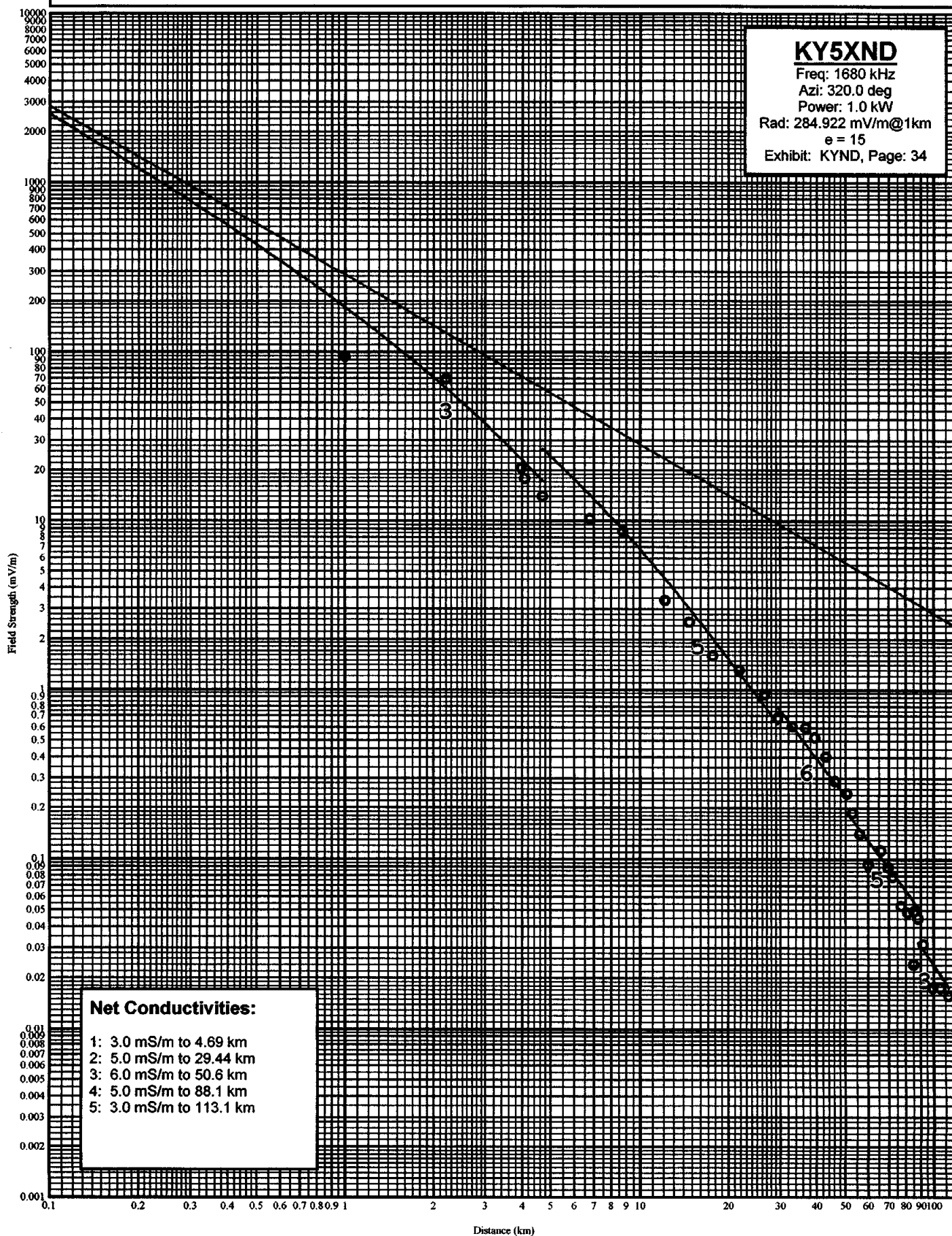
Point Number	Distance		Field	Notes	Date	Time
-----	(km)	(mi)	(mV/m)			-----
1	2.20	1.37	74.000		4/6/2009	0836
2	3.98	2.47	22.000		4/6/2009	0903
3	4.10	2.55	19.000		4/6/2009	0907
4	4.69	2.91	15.000		4/6/2009	0914
5	6.78	4.21	11.000		4/7/2009	1056
6	8.76	5.44	9.300		4/7/2009	1050
7	12.14	7.54	3.600		4/7/2009	1041
8	14.69	9.13	2.700		4/7/2009	1032
9	17.64	10.96	1.700		4/7/2009	1025
10	21.77	13.53	1.400		4/7/2009	1019
11	26.50	16.47	1.000		4/7/2009	1014
12	29.44	18.29	0.730		4/7/2009	1001
13	32.90	20.44	0.650		4/7/2009	0951
14	36.62	22.75	0.640		4/7/2009	0942
15	39.31	24.43	0.560		4/7/2009	0927
16	42.89	26.65	0.430		4/7/2009	0920
17	46.12	28.66	0.310		4/7/2009	0911
18	50.60	31.44	0.260		4/7/2009	0904
19	53.00	32.93	0.200		4/7/2009	0853
20	56.02	34.81	0.150		4/7/2009	0844
21	59.83	37.18	0.100		4/7/2009	0837
22	66.01	41.02	0.120		4/6/2009	1717
23	69.68	43.30	0.096		4/6/2009	1711
24	72.43	45.01	0.085		4/6/2009	1703
25	77.29	48.03	0.057		4/6/2009	1647
26	81.41	50.59	0.052		4/6/2009	1636
27	85.47	53.11	0.053		4/6/2009	1620
28	88.10	54.74	0.048		4/6/2009	1628
29	91.86	57.08	0.034		4/6/2009	1620
30	85.03	52.84	0.026		4/6/2009	1613
31	99.09	61.57	0.019		4/6/2009	1605
32	105.38	65.48	0.019		4/6/2009	1556
33	113.10	70.28	0.017		4/6/2009	1545

KY5XND AM Measured Field Strength

Shown With Matching Conductivity Curves
KY5XND (AM), 1680 kHz, 1.0 kW ND-D, Monaville, Texas

KY5XND

Freq: 1680 kHz
Azi: 320.0 deg
Power: 1.0 kW
Rad: 284.922 mV/m@1km
 $e = 15$
Exhibit: KYND, Page: 34



Measurements for JHT Ventures, Inc.
1090 kHz, Bellville, Texas
Seeks: Make Changes in Transmitter Site/Power

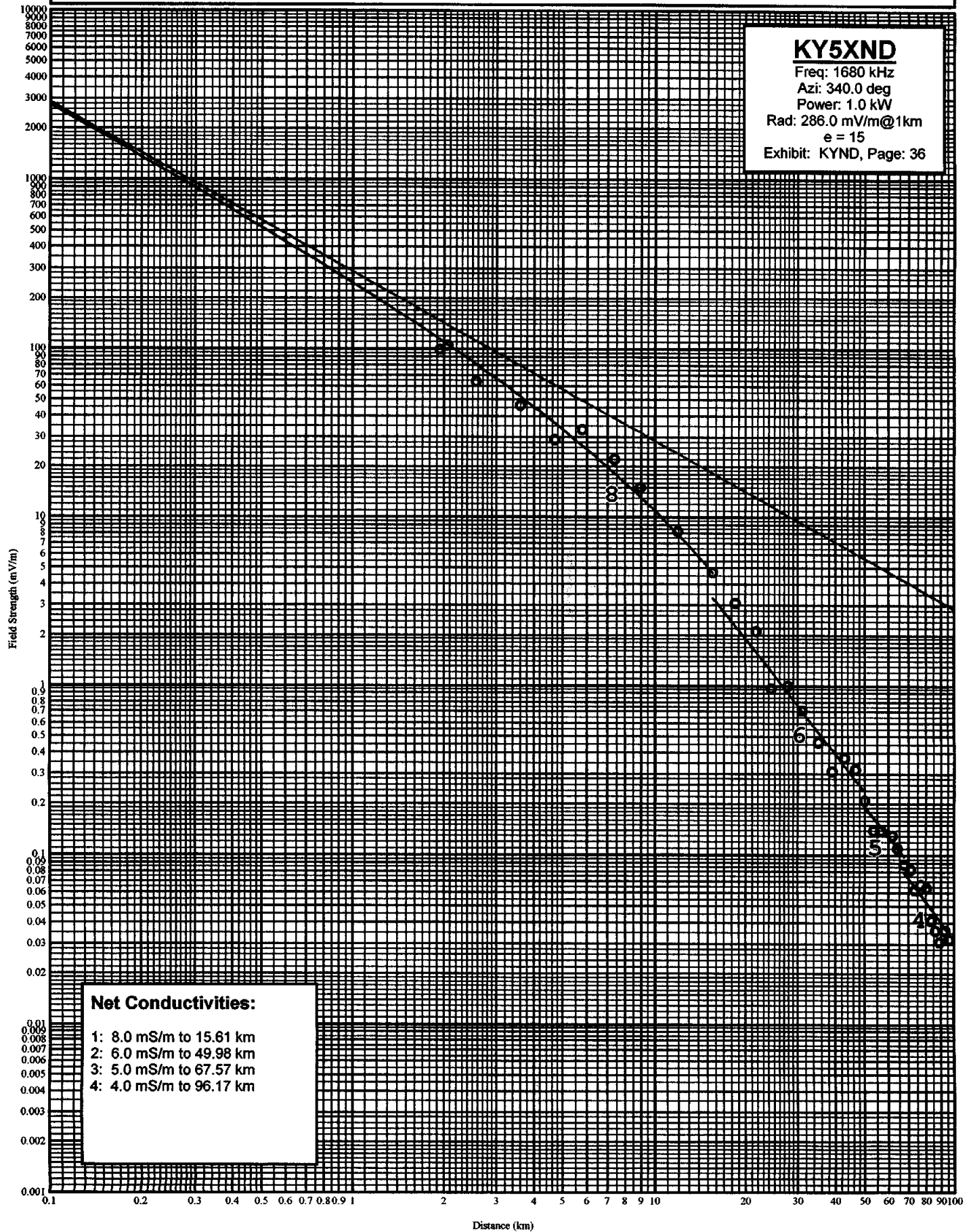
Exhibit: 1090 kHz Conductivity Radials, Page: 35

Measurements for 340.0 degrees
KY5XND, 1680 kHz, 1.0 kW ND-D, Monaville, Texas

Point Number	Distance		Field	Notes	Date	Time
-----	(km)	(mi)	(mV/m)			-----
1	1.95	1.21	99.000		4/6/2009	0842
2	2.07	1.29	104.000		4/6/2009	0846
3	2.57	1.60	64.000		4/6/2009	0853
4	3.61	2.24	46.000		4/6/2009	0919
5	4.70	2.92	29.000		4/6/2009	0924
6	5.80	3.60	33.000		4/6/2009	0930
7	7.38	4.59	22.000		4/6/2009	0936
8	8.97	5.57	15.000		4/6/2009	0942
9	11.90	7.39	8.200		4/6/2009	0950
10	15.61	9.70	4.700		4/6/2009	1002
11	18.60	11.56	3.100		4/6/2009	1013
12	21.75	13.51	2.100		4/6/2009	1020
13	24.38	15.15	0.960		4/6/2009	1028
14	27.83	17.29	1.000		4/6/2009	1035
15	31.00	19.26	0.710		4/6/2009	1042
16	35.12	21.82	0.460		4/6/2009	1049
17	39.06	24.27	0.310		4/6/2009	1104
18	42.92	26.67	0.370		4/6/2009	1112
19	46.61	28.96	0.320		4/6/2009	1120
20	49.98	31.06	0.210		4/6/2009	1129
21	53.76	33.40	0.140		4/6/2009	1206
22	56.78	35.28	0.140		4/6/2009	1217
23	61.81	38.41	0.130		4/6/2009	1232
24	64.32	39.97	0.110		4/6/2009	1243
25	67.57	41.99	0.088		4/6/2009	1252
26	71.09	44.17	0.082		4/6/2009	1301
27	73.57	45.71	0.062		4/6/2009	1419
28	76.75	47.69	0.067		4/6/2009	1409
29	80.46	50.00	0.064		4/6/2009	1428
30	83.44	51.85	0.041		4/6/2009	1435
31	86.25	53.59	0.036		4/6/2009	1446
32	89.37	55.53	0.031		4/6/2009	1452
33	93.10	57.85	0.036		4/6/2009	1500
34	96.17	59.76	0.032		4/6/2009	1511

KY5XND AM Measured Field Strength

Shown With Matching Conductivity Curves
KY5XND (AM), 1680 kHz, 1.0 kW, ND-D, Monaville, Texas



Measurements for JHT Ventures, Inc.
 1090 kHz, Bellville, Texas
 Seeks: Make Changes in Transmitter Site/Power

Exhibit: 1090 kHz Conductivity Radials, Page: 37

GROUND CONDUCTIVITY REPORT

Note: Measured Radials Conducted On
 KY5XND, 1680 kHz, 1.0 kW ND-D, Monaville, Texas

Lat : 29-56-05.0 N
 Lon : 96-06-47.0 W
 Radius : 300.0

* Includes measured conductivity data

0 deg:	19.32,	6.0*	44.96,	4.0*	74.28,	7.0*	101.01,	5.0*
	229.62,	4.0	253.71,	8.0	300.03,	30.0		
5 deg:	19.32,	6.0*	44.96,	4.0*	74.28,	7.0*	101.01,	5.0*
	226.82,	4.0	300.28,	8.0				
10 deg:	13.42,	8.0*	19.32,	6.0*	30.30,	5.0*	44.96,	4.0*
	55.64,	2.0*	74.28,	7.0*	84.86,	1.0*	101.01,	5.0*
	126.33,	1.5*	224.76,	4.0	300.06,	8.0		
15 deg:	13.42,	8.0*	30.30,	5.0*	55.64,	2.0*	84.86,	1.0*
	126.33,	1.5*	226.39,	4.0	300.38,	8.0		
20 deg:	13.42,	8.0*	30.30,	5.0*	55.64,	2.0*	84.86,	1.0*
	126.33,	1.5*	229.78,	4.0	300.18,	8.0		
25 deg:	13.42,	8.0*	30.30,	5.0*	55.64,	2.0*	84.86,	1.0*
	126.33,	1.5*	235.52,	4.0	300.02,	8.0		
30 deg:	13.42,	8.0*	21.70,	7.0*	30.30,	5.0*	35.88,	5.0*
	54.88,	3.0*	55.64,	2.0*	84.86,	1.0*	103.95,	2.0*
	126.33,	1.5*						
	244.65,	4.0	299.72,	8.0				
35 deg:	21.70,	7.0*	35.88,	5.0*	54.88,	3.0*	103.95,	2.0*
	256.49,	4.0	300.21,	8.0				
40 deg:	21.70,	7.0*	35.88,	5.0*	54.88,	3.0*	103.95,	2.0*
	152.74,	4.0	212.49,	8.0	263.61,	4.0	299.89,	8.0
45 deg:	21.70,	7.0*	35.88,	5.0*	54.88,	3.0*	103.95,	2.0*
	139.17,	4.0	235.80,	8.0	255.04,	4.0	300.17,	8.0
50 deg:	21.70,	7.0*	30.20,	6.0*	35.88,	5.0*	49.12,	4.0*
	54.88,	3.0*	78.25,	3.0*	103.95,	2.0*	104.15,	2.0*
	129.24,	4.0	300.35,	8.0				
55 deg:	30.20,	6.0*	49.12,	4.0*	78.25,	3.0*	104.15,	2.0*
	122.09,	4.0	299.84,	8.0				
60 deg:	30.20,	6.0*	49.12,	4.0*	78.25,	3.0*	104.15,	2.0*
	115.73,	4.0	299.82,	8.0				
65 deg:	30.20,	6.0*	49.12,	4.0*	78.25,	3.0*	104.15,	2.0*
	111.81,	4.0	299.90,	8.0				
70 deg:	15.15,	8.0*	30.20,	6.0*	36.45,	5.0*	49.12,	4.0*
	58.22,	3.0*	78.25,	3.0*	104.15,	2.0*	121.44,	2.0*
	300.17,	8.0						
75 deg:	15.15,	8.0*	36.45,	5.0*	58.22,	3.0*	121.44,	2.0*
	300.17,	8.0						
80 deg:	15.15,	8.0*	36.45,	5.0*	58.22,	3.0*	121.44,	2.0*
	138.73,	30.0	299.94,	8.0				

85 deg:	15.15,	8.0*	36.45,	5.0*	58.22,	3.0*	121.44,	2.0*
	215.30,	30.0	273.13,	8.0	299.64,	30.0		
90 deg:	15.15,	8.0*	34.91,	7.0*	36.45,	5.0*	58.22,	3.0*
	76.89,	5.0*	121.44,	2.0*	123.41,	3.0*	267.87,	30.0
	276.72,	5000.0	300.00,	30.0				
95 deg:	34.91,	7.0*	76.89,	5.0*	123.41,	3.0*	229.80,	30.0
	300.21,	5000.0						
100 deg:	34.91,	7.0*	76.89,	5.0*	123.41,	3.0*	126.23,	30.0
	139.39,	5000.0	191.92,	30.0	300.26,	5000.0		
105 deg:	34.91,	7.0*	76.89,	5.0*	123.41,	3.0*	139.03,	5000.0
	156.58,	30.0	163.28,	5000.0	168.19,	30.0	300.26,	5000.0
110 deg:	34.91,	7.0*	60.90,	6.0*	76.89,	5.0*	93.69,	8.0*
	123.41,	3.0*	141.06,	10.0*	149.06,	5000.0	154.24,	30.0
	299.66,	5000.0						
115 deg:	60.90,	6.0*	93.69,	8.0*	141.06,	10.0*	143.07,	5000.0
	147.51,	30.0	299.76,	5000.0				
120 deg:	60.90,	6.0*	93.69,	8.0*	141.06,	10.0*	300.24,	5000.0
125 deg:	60.90,	6.0*	93.69,	8.0*	141.06,	10.0*	299.88,	5000.0
130 deg:	3.03,	4.0*	50.37,	6.0*	60.90,	6.0*	72.91,	7.0*
	93.69,	8.0*	123.30,	8.0*	141.06,	10.0*	299.84,	5000.0
135 deg:	3.03,	4.0*	50.37,	6.0*	72.91,	7.0*	123.30,	8.0*
	134.62,	30.0	300.21,	5000.0				
140 deg:	3.03,	4.0*	50.37,	6.0*	72.91,	7.0*	123.30,	8.0*
	134.15,	30.0	300.38,	5000.0				
145 deg:	3.03,	4.0*	50.37,	6.0*	72.91,	7.0*	123.30,	8.0*
	124.12,	15.0	136.65,	30.0	299.57,	5000.0		
150 deg:	3.03,	4.0*	50.37,	6.0*	56.67,	6.0*	71.20,	10.0*
	72.91,	7.0*	123.30,	8.0*	138.51,	6.0*	299.73,	5000.0
155 deg:	56.67,	6.0*	71.20,	10.0*	138.51,	6.0*	300.09,	5000.0
160 deg:	56.67,	6.0*	71.20,	10.0*	138.51,	6.0*	139.08,	30.0
	300.32,	5000.0						
165 deg:	56.67,	6.0*	71.20,	10.0*	138.51,	6.0*	300.16,	5000.0
170 deg:	20.37,	6.0*	44.86,	8.0*	56.67,	6.0*	71.20,	10.0*
	74.45,	6.0*	94.98,	8.0*	132.20,	10.0*	138.51,	6.0*
	300.19,	5000.0						
175 deg:	20.37,	6.0*	44.86,	8.0*	74.45,	6.0*	94.98,	8.0*
	132.20,	10.0*	146.16,	30.0	299.59,	5000.0		
180 deg:	20.37,	6.0*	44.86,	8.0*	74.45,	6.0*	94.98,	8.0*
	132.20,	10.0*	146.54,	30.0	300.34,	5000.0		
185 deg:	20.37,	6.0*	44.86,	8.0*	74.45,	6.0*	94.98,	8.0*
	132.20,	10.0*	140.61,	30.0	299.58,	5000.0		
190 deg:	6.43,	5.0*	20.37,	6.0*	30.03,	7.0*	44.86,	8.0*
	74.45,	6.0*	90.47,	6.0*	94.98,	8.0*	132.20,	10.0*
	144.26,	8.0*	145.99,	30.0	168.59,	5000.0	169.51,	30.0
	300.17,	5000.0						
195 deg:	6.43,	5.0*	30.03,	7.0*	90.47,	6.0*	144.26,	8.0*
	150.58,	30.0	158.36,	5000.0	183.32,	30.0	300.14,	5000.0
200 deg:	6.43,	5.0*	30.03,	7.0*	90.47,	6.0*	144.26,	8.0*
	144.83,	30.0	150.88,	5000.0	179.47,	30.0	196.22,	5000.0
	206.04,	30.0	229.46,	5000.0	230.61,	30.0	300.28,	5000.0
205 deg:	6.43,	5.0*	30.03,	7.0*	90.47,	6.0*	144.26,	8.0*
	215.46,	30.0	229.63,	5000.0	257.15,	30.0	272.51,	5000.0
	300.04,	30.0						

210 deg:	6.43,	5.0*	10.82,	5.0*	30.03,	7.0*	34.08,	7.0*
	64.18,	5.0*	90.47,	6.0*	96.32,	8.0*	136.53,	6.0
	144.26,	8.0*	263.38,	30.0	269.02,	5000.0	299.68,	30.0
215 deg:	10.82,	5.0*	34.08,	7.0*	64.18,	5.0*	96.32,	8.0*
	136.53,	6.0*	299.51,	30.0				
220 deg:	10.82,	5.0*	34.08,	7.0*	64.18,	5.0*	96.32,	8.0*
	136.53,	6.0*	294.65,	30.0	295.37,	15.0	295.88,	30.0
	296.60,	15.0	299.59,	30.0	300.31,	15.0		
225 deg:	10.82,	5.0*	34.08,	7.0*	64.18,	5.0*	96.32,	8.0*
	136.53,	6.0*	300.14,	15.0				
230 deg:	10.82,	5.0*	25.40,	8.0*	34.08,	7.0*	64.18,	5.0*
	67.58,	6.0*	87.49,	4.0*	96.32,	8.0*	110.20,	6.0*
	136.53,	6.0*	299.76,	15.0				
235 deg:	25.40,	8.0*	67.58,	6.0*	87.49,	4.0*	110.20,	6.0*
	299.79,	15.0						
240 deg:	25.40,	8.0*	67.58,	6.0*	87.49,	4.0*	110.20,	6.0*
	300.15,	15.0						
245 deg:	25.40,	8.0*	67.58,	6.0*	87.49,	4.0*	110.20,	6.0*
	299.66,	15.0						
250 deg:	25.40,	8.0*	37.47,	7.0*	55.31,	6.0*	67.58,	6.0*
	87.49,	4.0*	99.55,	4.0*	110.20,	6.0*	121.62,	3.0*
	299.56,	15.0						
255 deg:	37.47,	7.0*	55.31,	6.0*	99.55,	4.0*	121.62,	3.0*
	300.16,	15.0						
260 deg:	37.47,	7.0*	55.31,	6.0*	99.55,	4.0*	121.62,	3.0*
	300.16,	15.0						
265 deg:	37.47,	7.0*	55.31,	6.0*	99.55,	4.0*	121.62,	3.0*
	190.01,	15.0	300.10,	8.0				
270 deg:	12.49,	7.0*	30.33,	5.0*	37.47,	7.0*	55.31,	6.0*
	57.12,	7.0*	83.64,	6.0*	99.55,	4.0*	111.19,	4.0*
	121.62,	3.0*	177.00,	15.0	299.90,	8.0		
275 deg:	12.49,	7.0*	30.33,	5.0*	57.12,	7.0*	83.64,	6.0*
	111.19,	4.0*	170.21,	15.0	300.33,	8.0		
280 deg:	12.49,	7.0*	30.33,	5.0*	57.12,	7.0*	83.64,	6.0*
	111.19,	4.0*	166.25,	15.0	299.83,	8.0		
285 deg:	12.49,	7.0*	30.33,	5.0*	57.12,	7.0*	83.64,	6.0*
	111.19,	4.0*	161.80,	15.0	300.07,	8.0		
290 deg:	12.49,	7.0*	26.99,	6.0*	30.33,	5.0*	57.12,	7.0*
	83.64,	6.0*	84.20,	5.0*	110.90,	4.0*	111.19,	4.0*
	156.08,	15.0	161.97,	30.0	300.07,	8.0		
295 deg:	26.99,	6.0*	84.20,	5.0*	110.90,	4.0*	141.42,	15.0
	162.32,	30.0	299.81,	8.0				
300 deg:	26.99,	6.0*	84.20,	5.0*	110.90,	4.0*	134.10,	15.0
	166.84,	30.0	300.42,	8.0				
305 deg:	26.99,	6.0*	84.20,	5.0*	110.90,	4.0*	129.23,	15.0
	173.08,	30.0	299.75,	8.0				
310 deg:	4.69,	3.0*	26.99,	6.0*	29.44,	5.0*	50.60,	6.0*
	84.20,	5.0*	88.10,	5.0*	110.90,	4.0*	113.10,	3.0*
	127.33,	15.0	178.66,	30.0	241.33,	8.0	241.94,	15.0
	242.53,	8.0	300.26,	15.0				
315 deg:	4.69,	3.0*	29.44,	5.0*	50.60,	6.0*	88.10,	5.0*
	113.10,	3.0*	125.79,	15.0	184.41,	30.0	300.10,	15.0
320 deg:	4.69,	3.0*	29.44,	5.0*	50.60,	6.0*	88.10,	5.0*
	113.10,	3.0*	127.55,	15.0	191.70,	30.0	299.82,	15.0

325 deg:	4.69,	3.0*	29.44,	5.0*	50.60,	6.0*	88.10,	5.0*
	113.10,	3.0*	129.22,	15.0	195.07,	30.0	300.15,	15.0
330 deg:	4.69,	3.0*	15.61,	8.0*	29.44,	5.0*	49.98,	6.0*
	50.60,	6.0*	67.57,	5.0*	88.10,	5.0*	96.17,	4.0*
	113.10,	3.0*	133.88,	15.0	184.28,	30.0	299.66,	15.0
335 deg:	15.61,	8.0*	49.98,	6.0*	67.57,	5.0*	96.17,	4.0*
	105.08,	15.0	105.42,	4.0	111.46,	15.0	114.65,	4.0
	115.49,	15.0	143.20,	4.0	300.32,	15.0		
340 deg:	15.61,	8.0*	49.98,	6.0*	67.57,	5.0*	96.17,	4.0*
	152.93,	4.0	300.15,	15.0				
345 deg:	15.61,	8.0*	49.98,	6.0*	67.57,	5.0*	96.17,	4.0*
	165.90,	4.0	265.70,	15.0	299.46,	30.0	300.35,	15.0
350 deg:	15.61,	8.0*	19.32,	6.0*	44.96,	4.0*	49.98,	6.0*
	67.57,	5.0*	74.28,	7.0*	96.17,	4.0*	101.01,	5.0*
	185.19,	4.0	248.23,	15.0	300.05,	30.0		
355 deg:	19.32,	6.0*	44.96,	4.0*	74.28,	7.0*	101.01,	5.0*
	213.75,	4.0	236.11,	15.0	300.27,	30.0		

FEDERAL COMMUNICATIONS COMMISSION
445 TWELFTH STREET SW
WASHINGTON DC 20554

MEDIA BUREAU
AUDIO DIVISION
APPLICATION STATUS: (202) 418-2730
HOME PAGE: www.fcc.gov/mb/audio/

ENGINEER: CHARLES N. (NORM) MILLER
TELEPHONE: (202) 418-2767
FACSIMILE: (202) 418-1410
E-MAIL: charles.miller@fcc.gov

February 18, 2009

Matthew Provenzano
740 Voss Road
Houston, Texas 77024

In re: Matthew Provenzano
KYND(AM), Cypress, Texas
Facility Identification Number: 40696
Special Field Test Authority

Dear Mr. Provenzano:

This is in reference to the request filed December 30, 2008, on behalf of Matthew Provenzano ("MP"), licensee of Station KYND(AM), Cypress, Texas. MP requests special field test authority ("SFTA"), pursuant to 47 CFR §73.1515, for operation of a 1000 watt test transmitter on 1680 kHz, employing a temporary antenna at geographic coordinates 29° 56' 03" N, 96° 06' 48" W.

MP proposes to conduct field strength measurements pursuant to 47 CFR § 73.1515 and other applicable sections of the Commission's Rules, to substantiate a planned application for modification of the licensed facilities of Station KYND. The request provides details of the proposed SFTA operation. MP states that the proposed SFTA operation would not cause interference to any other station.

Our review confirms that no interference to any other station is likely, and that notification to the Federal Aviation Administration is not required for the proposed temporary antenna. SFTA will be granted as requested.

In light of the above, the requested special field test authority IS HEREBY GRANTED. Call Sign KY5XND is assigned to the test station. Station KY5XND may operate with the following facilities:

Frequency:	1680 kHz
Hours of operation:	Non-critical daytime hours only
Transmitter site:	South side of Harper's Church Rd., 3.35 km west of McKenzie Rd. in Waller County, Texas
Coordinates:	29° 56' 03" N, 96° 06' 48" W (NAD 1927)
Power:	Not to exceed 1.0 kilowatt
Antenna type:	Temporary tower with folded unipole feed, nondirectional
Radiator height:	67.5°
Overall height:	33.5 meters (110')
Antenna efficiency:	291.0 mV/m/km/kW ¹
Ground system	24 equally-spaced radials, each 45 meters in length

Transmissions shall consist of unmodulated carrier plus hourly station identification announcements. A report detailing the methodology employed and the results obtained must be submitted within sixty days following the conclusion of the experimental operation pursuant to 47 C.F.R. § 73.1515(c)(7). It will be necessary to reduce power or cease operation if complaints of interference are received. It will be necessary to reduce power or cease operation to protect persons having access to the site from radio frequency radiation in excess of FCC guidelines.

This special field test authority expires **April 18, 2009**.

Sincerely,



Charles N. Miller, Engineer
Audio Division
Media Bureau

cc: Robert Morrow
EIC, Houston, TX

¹ Millivolts per meter at one kilometer for one kilowatt input power.



Audio Division

(202)-418-2700

Distance, Bearing Between Two Sets of Coordinates

[FCC](#) > [MB](#) > [Audio Division](#) > [Distance Computations](#) and [Find Terminal Coordinates](#)

Find Distance and Azimuths Between 2 Sets of Coordinates -- Results

Distance between

N Latitude 29 56 3.00, W Longitude 96 6 48.00 (Point 1)

and N Latitude 29 56 5.00, W Longitude 96 6 47.00 (Point 2)

0.067 kilometers; 0.042 miles

Azimuth from point 1 to point 2 = 23.79°

Azimuth from point 2 to point 1 = 203.79°

[Another Distance Computation?](#)

Use [Sprong](#) to find the terminal or end coordinates, given a bearing and a distance.

This program is located at <http://www.fcc.gov/fcc-bin/audio/distance.html>

[FCC Home](#) | [Search](#) | [RSS](#) | [Updates](#) | [E-Filing](#) | [Initiatives](#) | [Consumers](#) | [Find People](#)

Please send comments via standard mail to the Federal Communications Commission, Consumer and Governmental Affairs Bureau, 445 12th Street, S.W., Washington, D.C., 20554. Questions can also be answered by calling the FCC's National Call Center, toll free, at 1-888-Call FCC (1-888-225-5322).

Federal Communications Commission
445 12th Street SW
Washington, DC 20554
[More FCC Contact Information...](#)

Phone: 1-888-CALL-FCC (1-888-225-5322)
TTY: 1-888-TELL-FCC (1-888-835-5322)
Fax: 1-866-418-0232
E-mail: fccinfo@fcc.gov

- [Privacy Policy](#)
- [Website Policies & Notices](#)
- [Required Browser Plug-ins](#)
- [Freedom of Information Act](#)